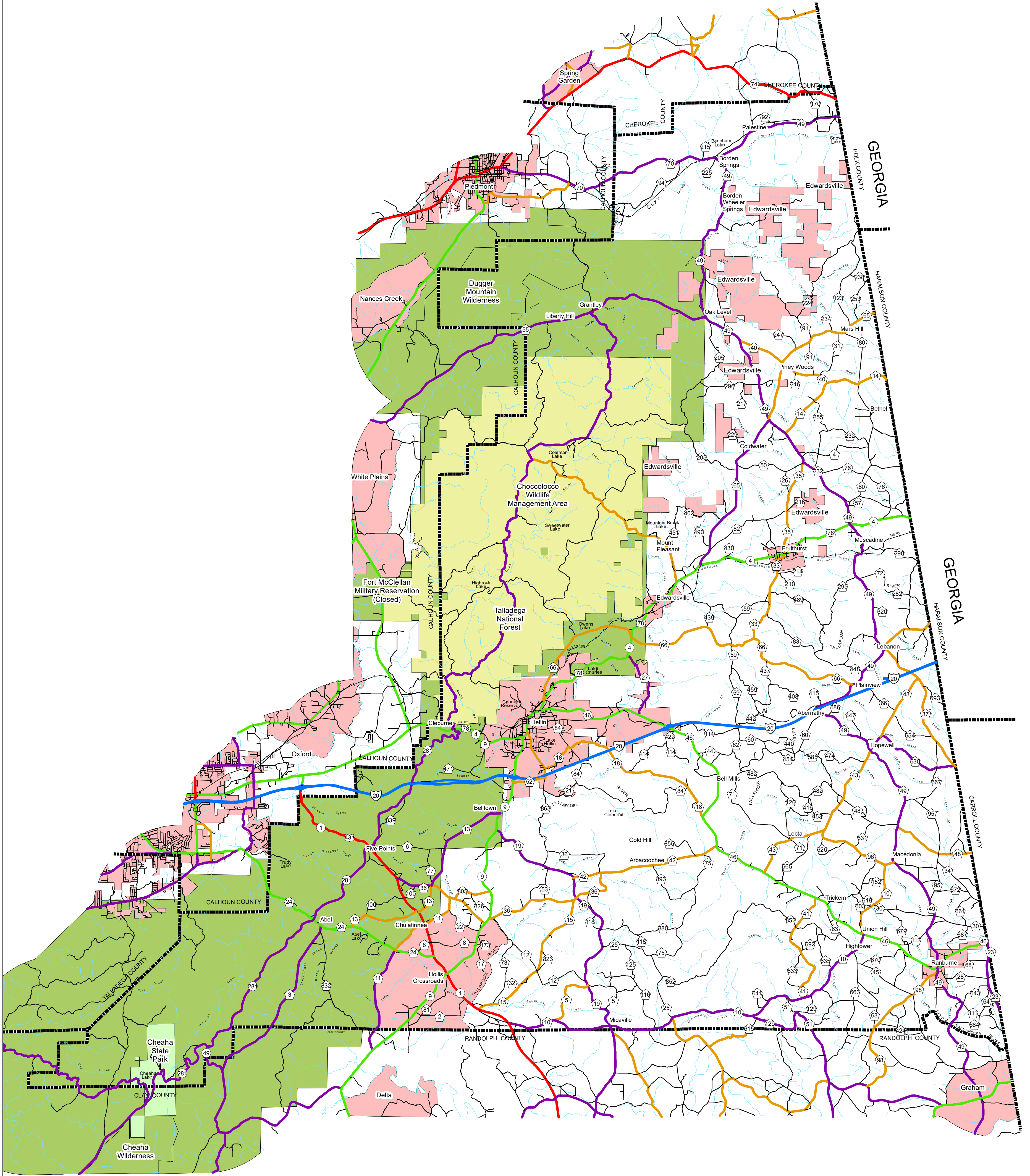
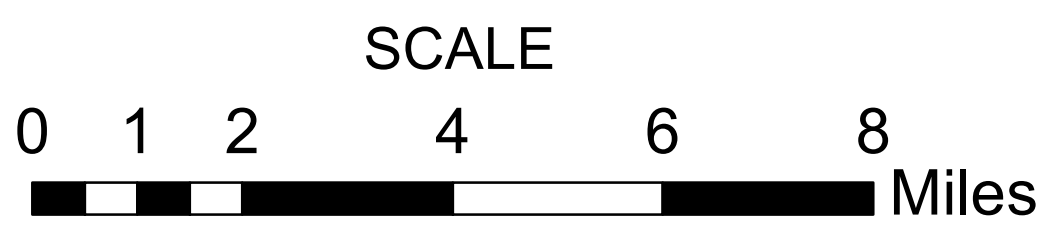


CLEBURNE COUNTY HIGHWAY FUNCTIONAL CLASSIFICATION SYSTEM



APPROVED SIGNATURES	
Federal Highway Administration	DATE
Bureau Chief Maintenance	DATE



CLEBURNE COUNTY ALABAMA DEPARTMENT OF TRANSPORTATION Highway Functional Classification



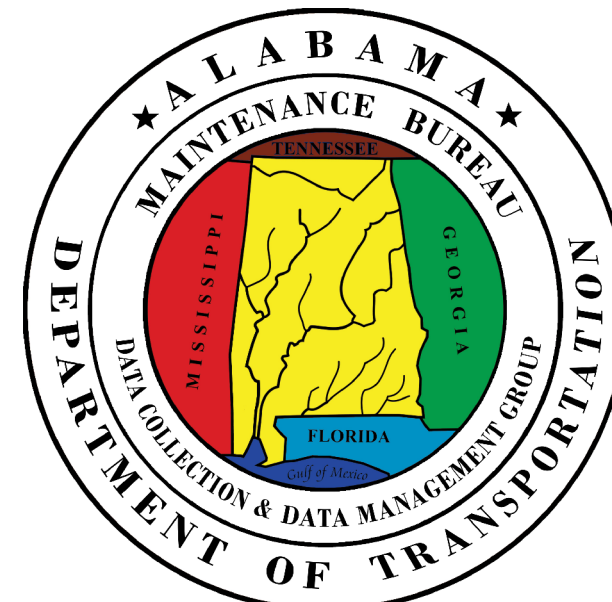
Federal Highway Administration
Alabama Division Office

REVISIONS

DATE	COMMENTS
July, 2021	Added New Legend and Border
October, 2021	Reclassified CR 41 from a Local Rd to a Minor Collector
October, 2021	Reclassified CR 24 from a Major Collector to a Minor Arterial

Disclaimer of Liability:
Due to the scale of this map neither the Alabama Department of Transportation (ALDOT) or the State of Alabama nor any employee and contractor thereof make any warranty, expressed or implied, or assume any legal liability or responsibility for the accuracy, completeness, or usefulness of any information contained on this map.

FHWA APPROVAL DATE
DATE: November 5, 2021



LEGEND

- Highway Functional Classification**
- 1 Interstate
 - 2 Principal Arterial-Other Freeways and Expressways
 - 3 Principal Arterial- Other
 - 4 Minor Arterial
 - 5 Major Collector
 - 6 Minor Collector
 - 7 Local Road
 - Proposed Road
 - OpenWater
 - Streams / Creeks
 - Large Urban Area
 - Large Urban Study Area
 - Small Urban Area
 - Wildlife Management Area
 - County Boundary
- Railroad
 - INTERSTATE
 - U.S.
 - STATE
 - COUNTY
 - City Limit
 - State Parks
 - Federal Lands