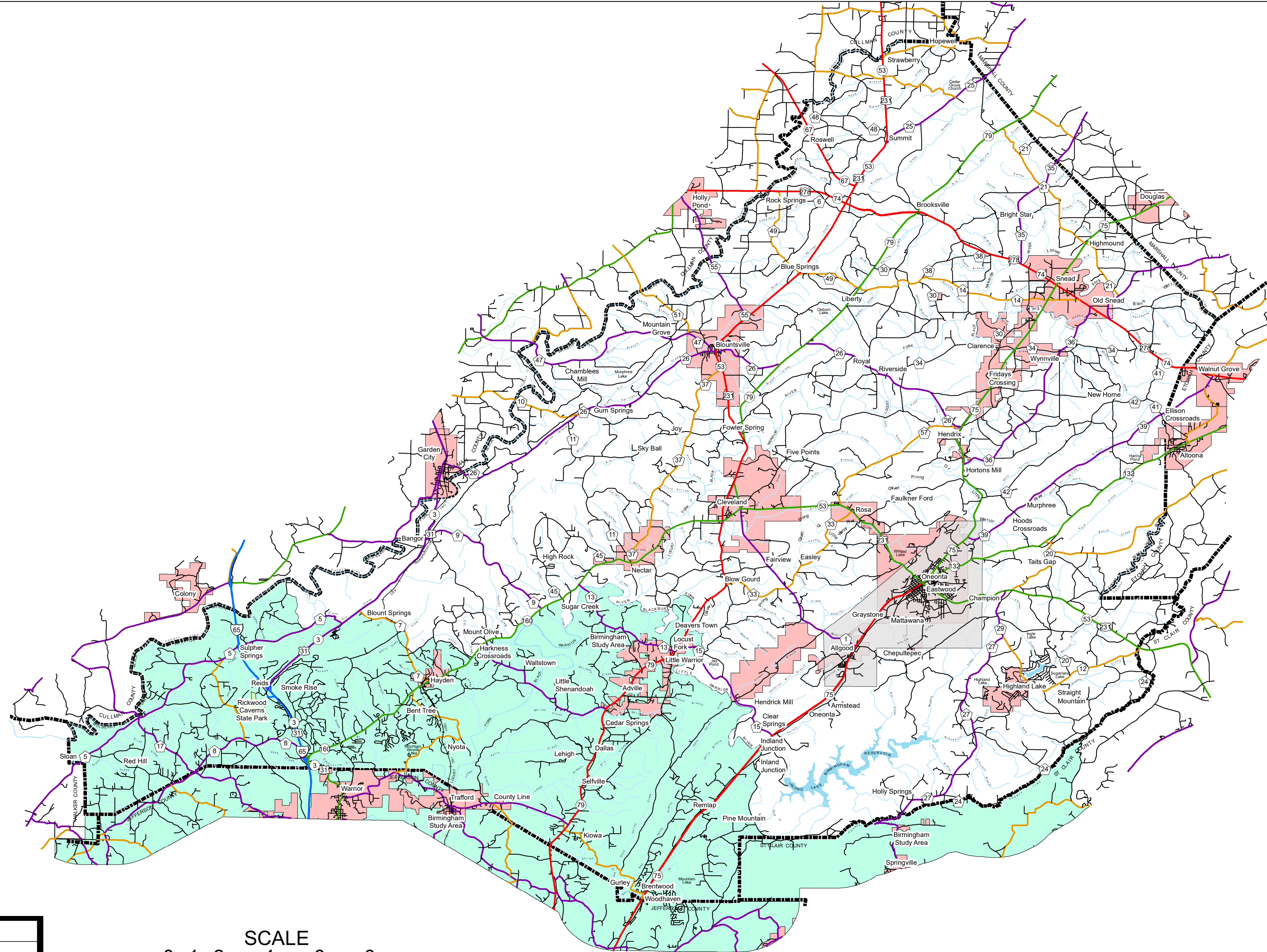
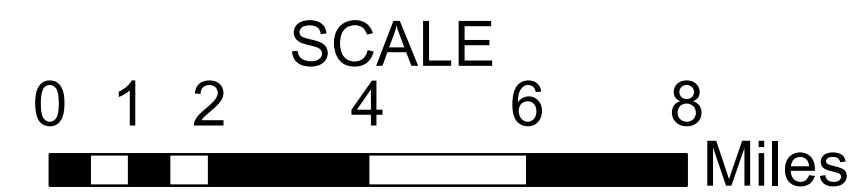


# BLOUNT COUNTY HIGHWAY FUNCTIONAL CLASSIFICATION SYSTEM



APPROVED SIGNATURES	
Federal Highway Administration	DATE
Bureau Chief Maintenance	DATE



Federal Highway Administration  
Alabama Division Office

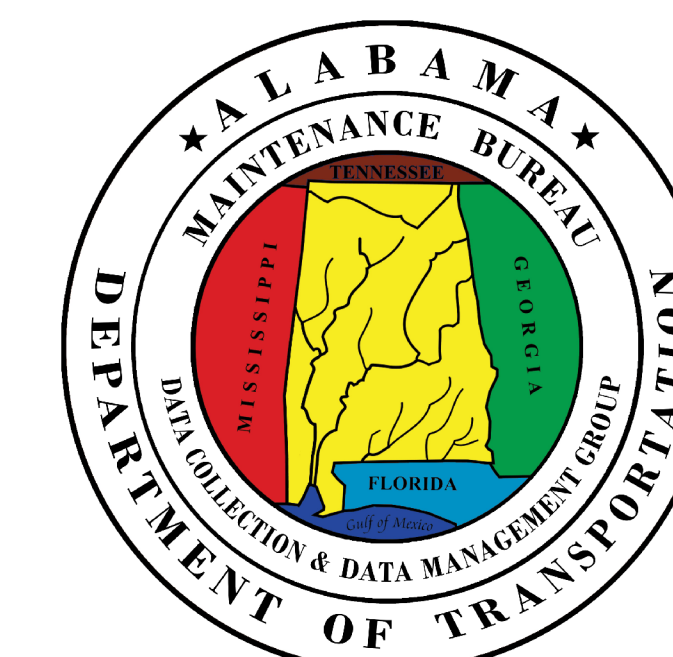
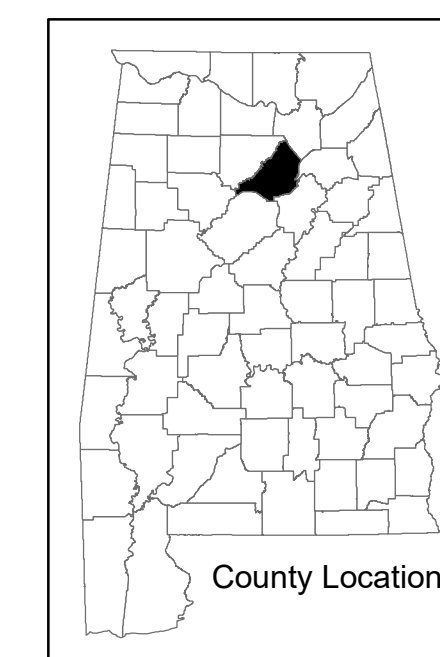
REVISIONS	
DATE	COMMENTS
October 22, 2018	Reclassified CR 36 from a Local Rd to a Major Collector
July, 2021	Added New Border and Legend

## BLOUNT COUNTY ALABAMA DEPARTMENT OF TRANSPORTATION HIGHWAY FUNCTIONAL CLASSIFICATION

Disclaimer of Liability

Due to the scale of this map neither the Alabama Department of Transportation (ALDOT) or the State of Alabama nor any employees and contractors thereof, make any warranty, expressed or implied, or assumes any legal liability, or responsibility, for the accuracy, completeness, or usefulness of any information contained on this map.

FHWA APPROVAL DATE  
DATE July, 2021



LEGEND	
Highway Functional Classification	
1 Interstate	—+— Railroad
2 Principal Arterial-Other Freeways and Expressways	—+— INTERSTATE
3 Principal Arterial-Other	—+— U.S.
4 Minor Arterial	—+— STATE
5 Major Collector	—+— COUNTY
6 Minor Collector	—+— City Limit
7 Local Road	—+— Federal Lands
8 Proposed Road	
Open Water	
Large Urban Area	
Large Urban Study Area	
Small Urban Area	
State Parks	
County Boundary	