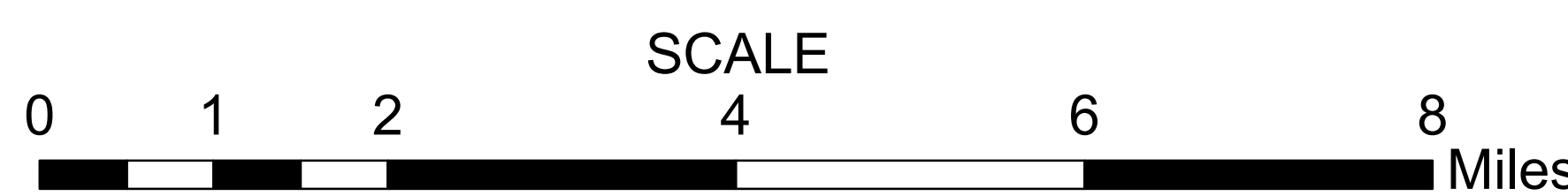
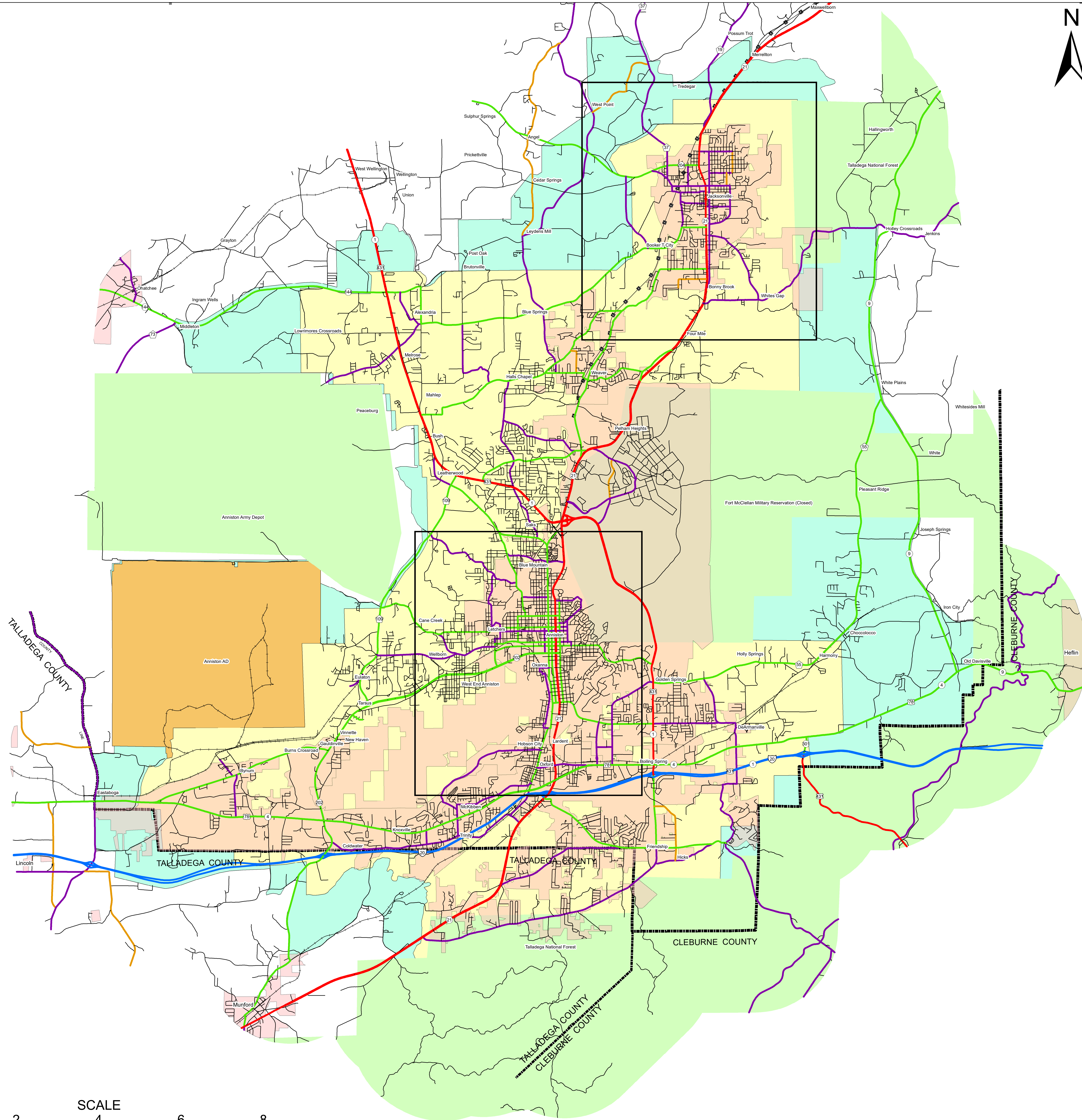
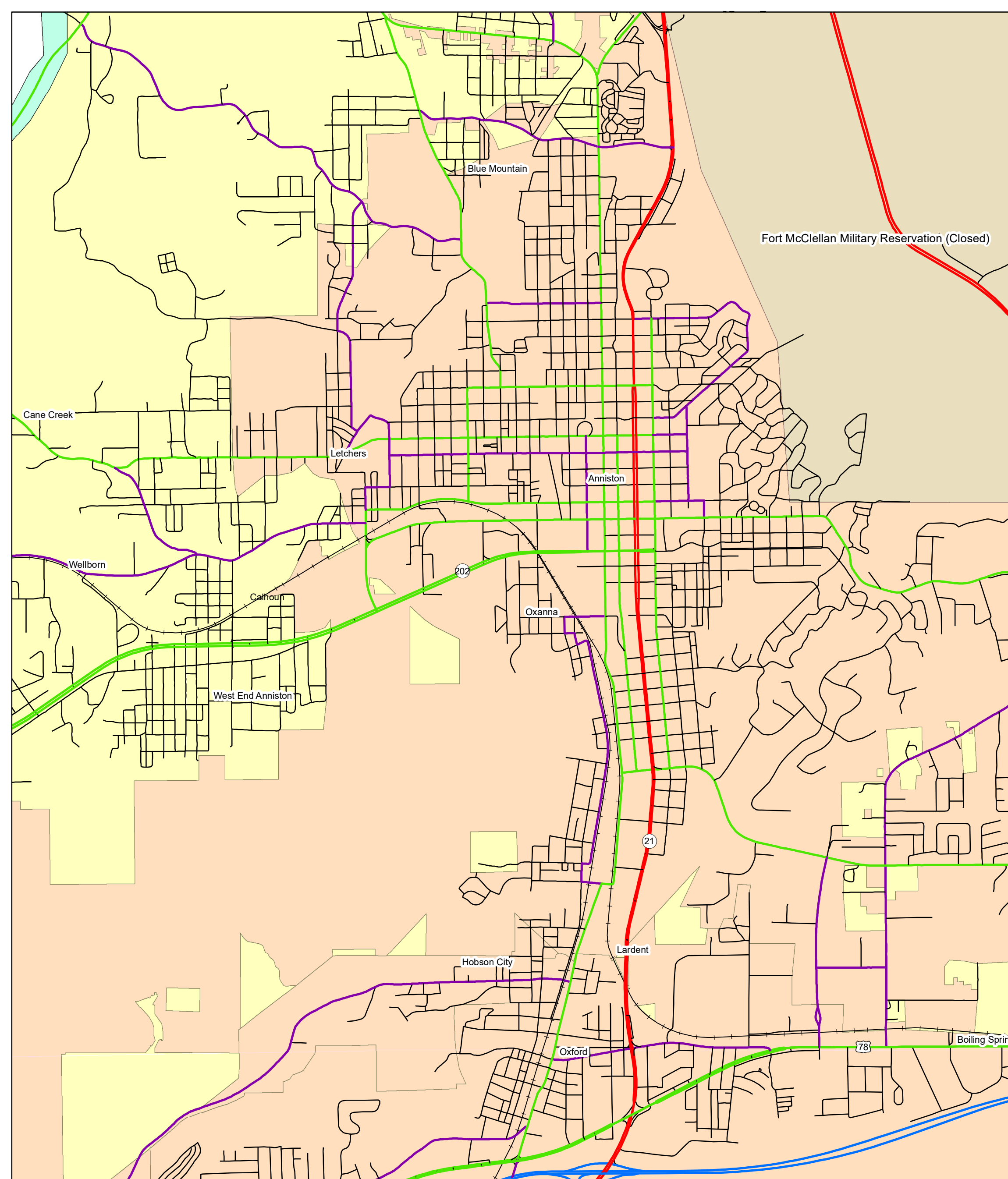
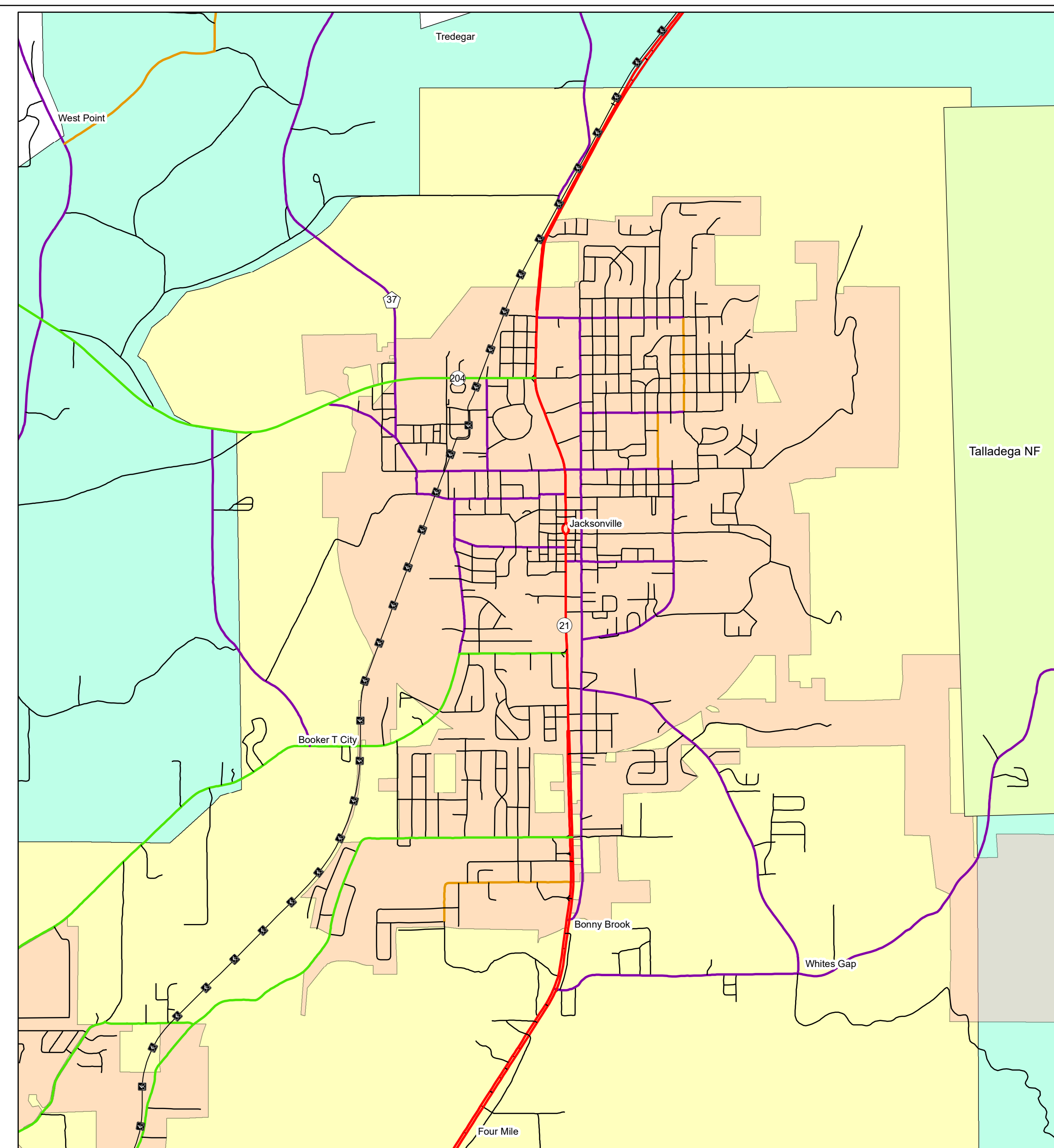
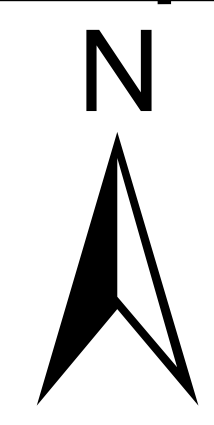


ANNISTON MPO HIGHWAY FUNCTIONAL CLASSIFICATION MAP



Federal Highway Administration
Alabama Division Office

REVISIONS

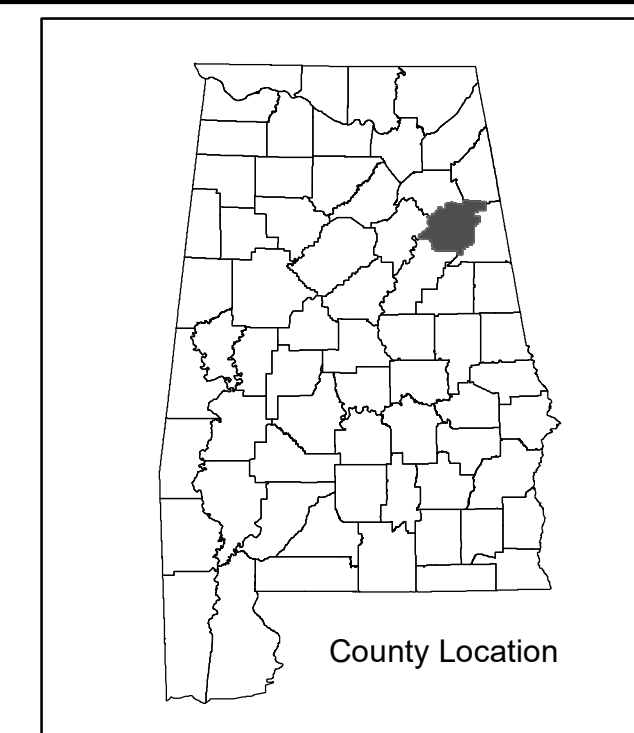
DATE	COMMENTS
August 7, 2019	Reclassified Eulaton Gate Rd from a Local Rd to a Major Collector
July 30, 2020	Reclassified Ossington/Coxwell Rd from a Local Rd to a Minor Collector

Disclaimer of Liability

Due to the scale of this map neither the Alabama Department of Transportation (ALDOT) or the State of Alabama nor any employees and contractors thereof, make any warranty, expressed or implied, or assumes any legal liability, or responsibility, for the accuracy, completeness, or usefulness of any information contained on this map.

Anniston MPO Highway Functional Classification Map

PHWA APPROVAL DATE
January 29, 2021



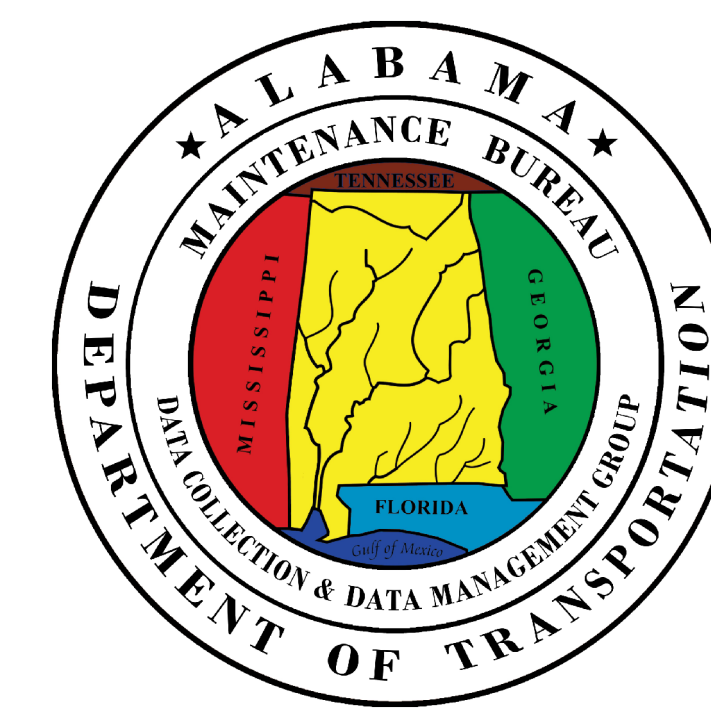
CERTIFICATION

The Highway Functional Classification and Federal Aid Urban Area Boundary depicted herein are based on data from the cooperative, comprehensive, and continuing transportation planning process and have been presented in appropriate local officials for their approval.

Chairman
Municipal Planning Organization
DATE

Director
Alabama Department of Transportation
DATE

Michigan Administrator
Federal Highway Administration
DATE



LEGEND

- Highway Functional Classification**
- 1 Interstate
 - 2 Principal Arterial-Other Freeways and Expressways
 - 3 Principal Arterial-Other
 - 4 Minor Arterial
 - 5 Major Collector
 - 6 Minor Collector
 - 7 Local Road
 - Proposed Road
 - Open Water
 - Streams / Creeks
 - Swamps / Marsh
 - Large Urban Area
 - Large Urban Study Area
 - Small Urban Area
 - Federal Lands
 - County Boundary
- Other Features**
- Railroad
 - INTERSTATE
 - U.S.
 - STATE
 - COUNTY
 - City Limit
 - Chief Ladsiga Trail
 - Military Facilities