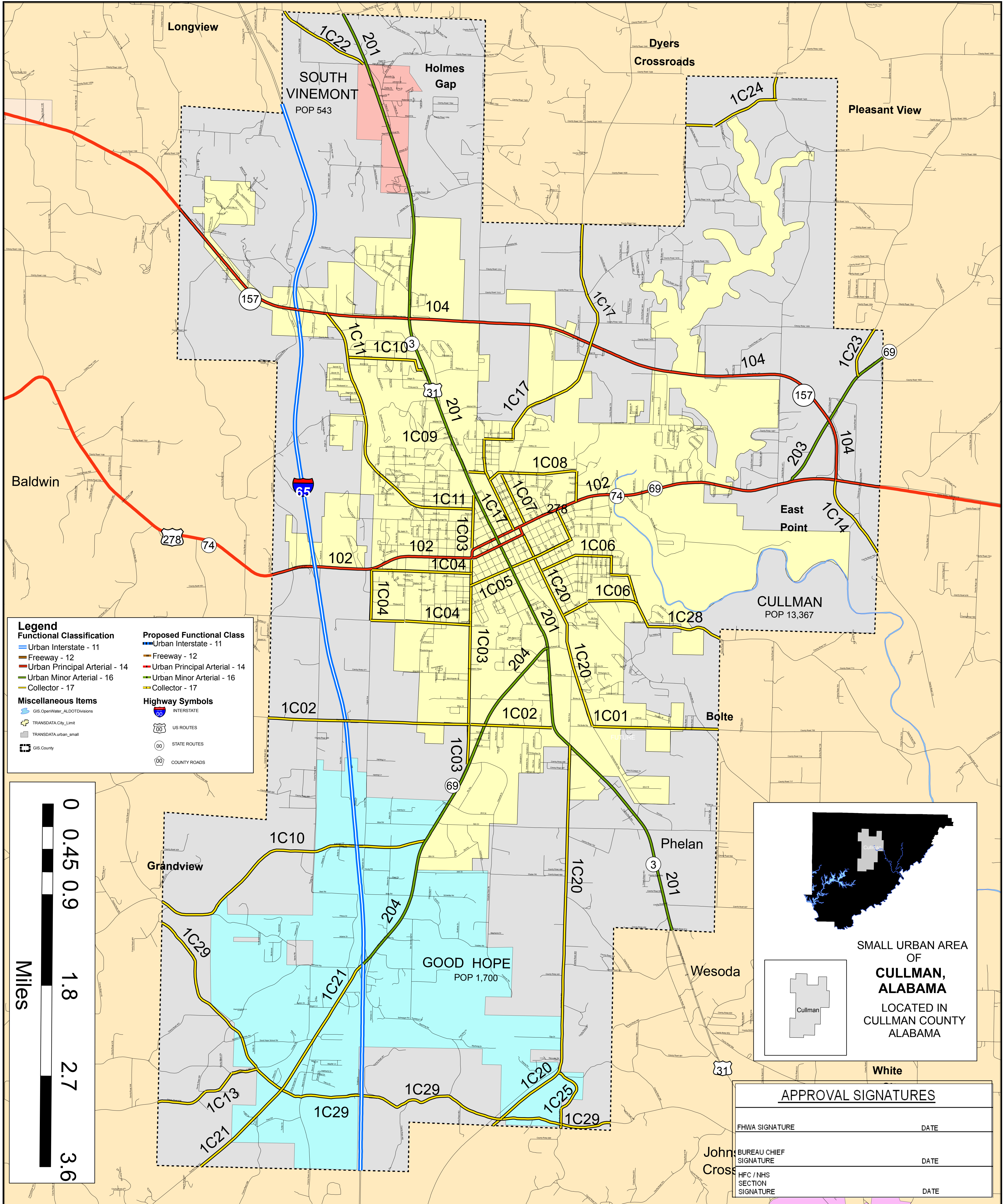


CULLMAN SMALL URBAN HIGHWAY FUNCTIONAL CLASSIFICATION SYSTEM



Legend

Functional Classification

- Urban Interstate - 11
- Freeway - 12
- Urban Principal Arterial - 14
- Urban Minor Arterial - 16
- Collector - 17

Miscellaneous Items

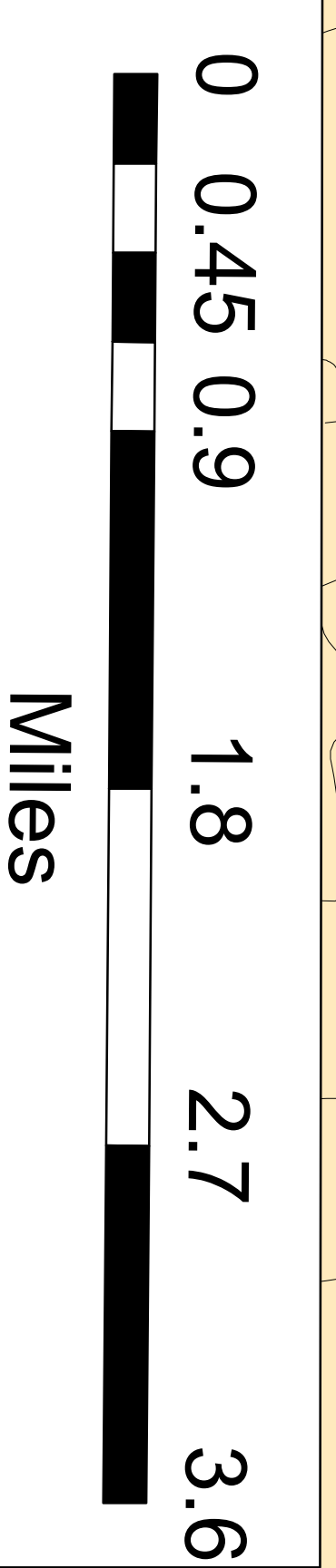
- GIS.OpenWater_ALDOTDivisions
- TRANSDATA.City_Limit
- TRANSDATA.urban_small
- GIS.County

Proposed Functional Class

- Urban Interstate - 11
- Freeway - 12
- Urban Principal Arterial - 14
- Urban Minor Arterial - 16
- Collector - 17

Highway Symbols

- INTERSTATE
- US ROUTES
- STATE ROUTES
- COUNTY ROADS



SMALL URBAN AREA OF
CULLMAN, ALABAMA
LOCATED IN
CULLMAN COUNTY
ALABAMA

APPROVAL SIGNATURES

FHWA SIGNATURE	DATE
BUREAU CHIEF SIGNATURE	DATE
HFC / NHS SECTION SIGNATURE	DATE

NORTH

Disclaimer of Liability
Due to the scale of this map neither the Alabama Department of Transportation (ALDOT) or the State of Alabama nor any employees and contractors thereof, make any warranty, expressed or implied, or assumes any legal liability, or responsibility, for the accuracy, completeness, or usefulness of any information contained on this map.

CULLMAN SMALL URBAN

ALABAMA DEPARTMENT OF TRANSPORTATION
Highway Functional Classification
Transportation Planning / Modal Programs Bureau

NAME	DATE	COMMENTS

FHWA APPROVAL DATE
Nov. 23, 2004

DRAWN BY: D.H. GRIFFIN
DATE DRAWN: JULY 7, 2009

CONTACT INFORMATION

DONALD H. GRIFFIN
State HFC / NHS Manager
Alabama Department of Transportation
Transportation Planning / Modal Programs
Special Studies Division
HFC / NHS Section
Phone: (334) 242-6426
Fax: (334) 353-6581
Email: griffin@dot.state.al.us
SouLine: 1*99*839

MAP SCALE
SEE SCALE ON MAP