

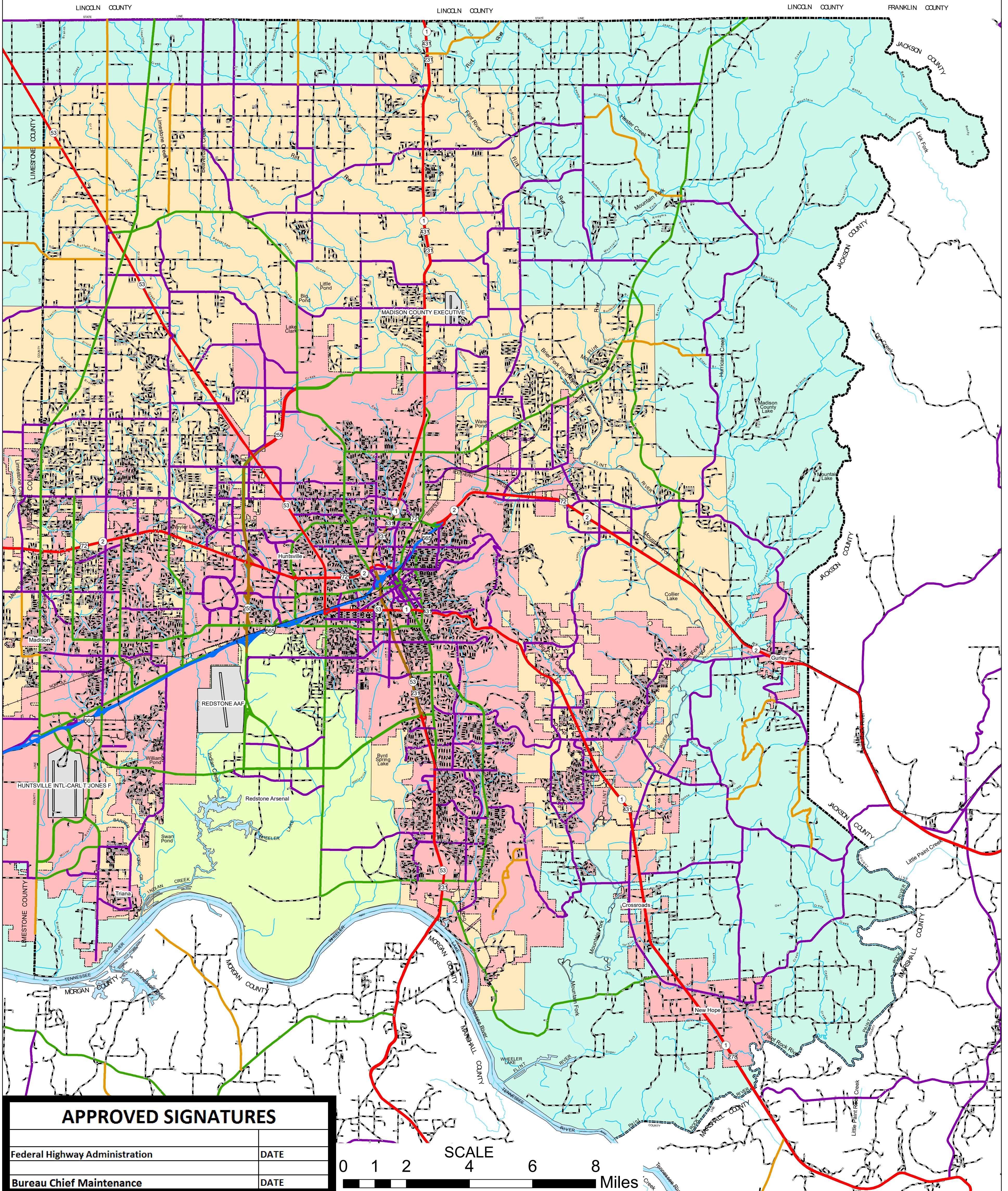
MADISON COUNTY HIGHWAY FUNCTIONAL CLASSIFICATION SYSTEM



TENNESSEE

TENNESSEE

TENNESSEE



APPROVED SIGNATURES	
Federal Highway Administration	DATE
Bureau Chief Maintenance	DATE



MADISON COUNTY ALABAMA DEPARTMENT OF TRANSPORTATION Highway Functional Classification

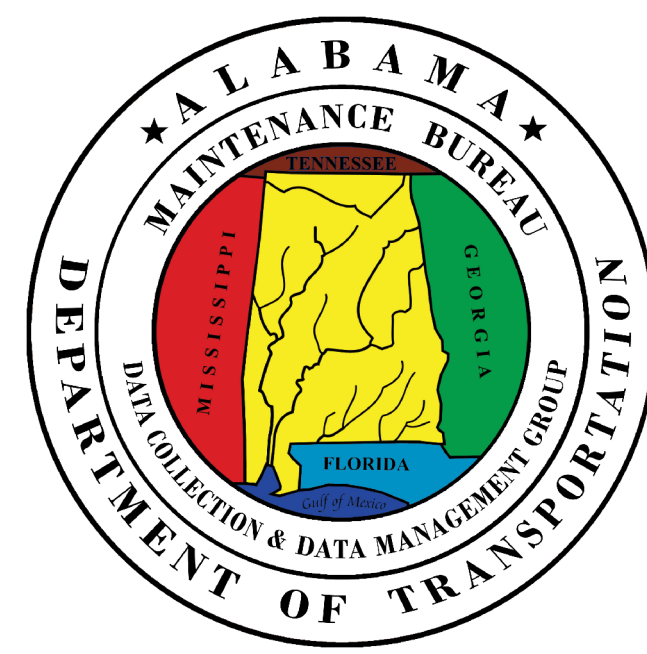
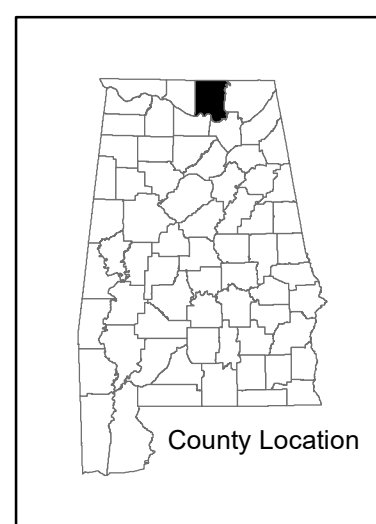


Federal Highway Administration
Alabama Division Office

REVISIONS	
DATE	COMMENTS
10/29/18	Reclassified a portion of Keel Hollow Rd to McKinney Rd from a Local Rd to a Major Collector
10/29/18	Reclassified a portion of Keel Hollow/Keel Mountain Rd from a Local Rd to a Minor Collector
10/29/18	Reclassified a portion of Range Rd/Blowing Cave Rd & Horse Cove Rd from a Local Rd to a Minor Collector

Disclaimer of Liability:
Due to the scale of this map neither the Alabama Department of Transportation (ALDOT) or the State of Alabama nor any employees and contractors thereof, make any warranty, expressed or implied, or assume any legal liability or responsibility for the accuracy, completeness, or usefulness of any information contained on this map.

FHWA APPROVAL DATE
DATE: March 18, 2019



LEGEND	
Highway Functional Classification	
1	Interstate
2	Principal Arterial-Other Freeways and Expressways
3	Principal Arterial-Other
4	Minor Arterial
5	Major Collector
6	Minor Collector
7	Local Road
Proposed Road	Proposed Road
OpenWater	OpenWater
Streams / Creeks	Streams / Creeks
Swamp / Marsh	Swamp / Marsh
Large Urban Area	Large Urban Area
Large Urban Study Area	Large Urban Study Area
Small Urban Area	Small Urban Area
Parks	Parks
County Boundary	County Boundary
—+—	Railroad
—+—	INTERSTATE
—+—	U.S.
—+—	STATE
—+—	COUNTY
—+—	City Limit