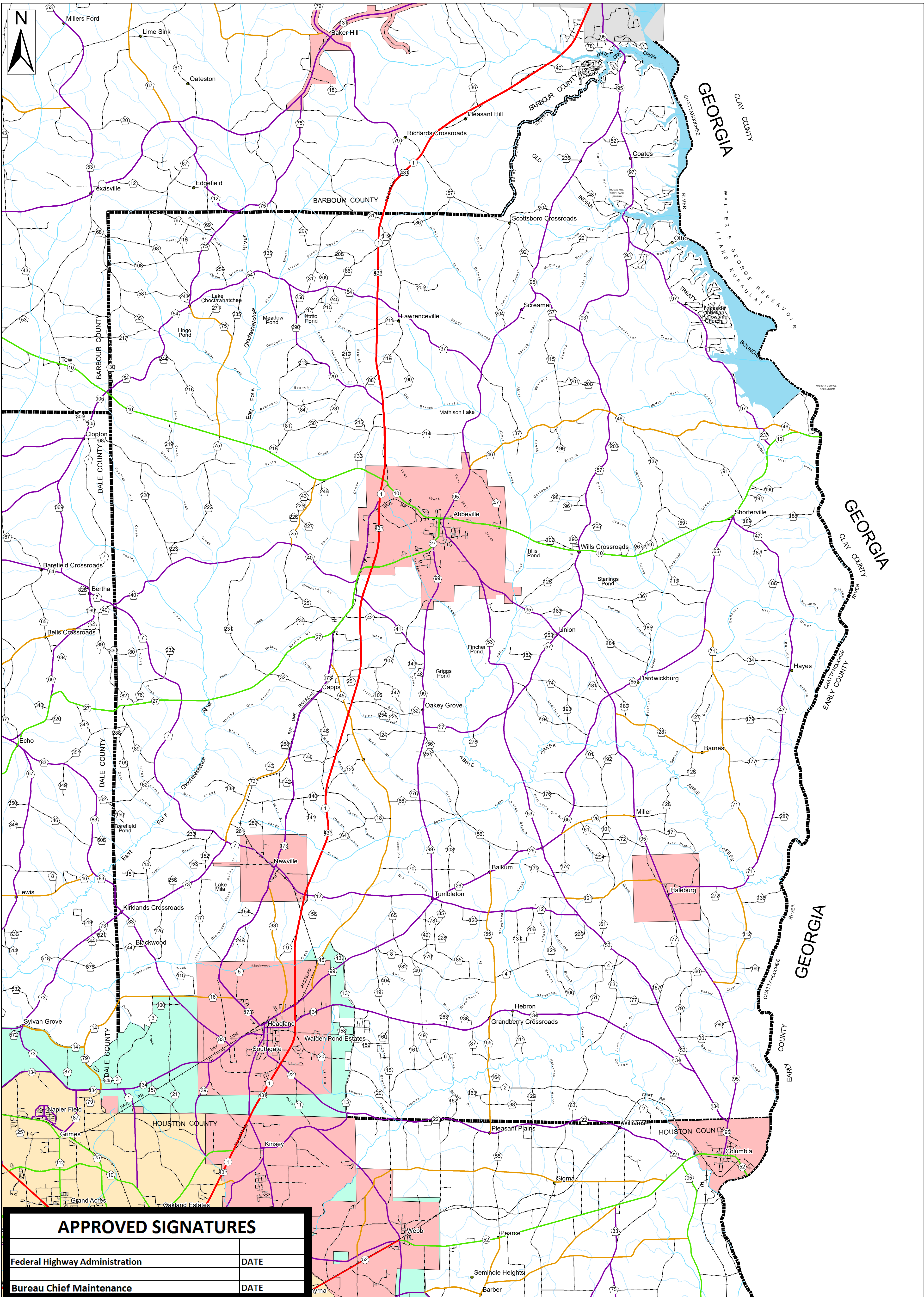


HENRY COUNTY HIGHWAY FUNCTIONAL CLASSIFICATION SYSTEM



APPROVED SIGNATURES	
Federal Highway Administration	DATE
Bureau Chief Maintenance	DATE

HENRY COUNTY ALABAMA DEPARTMENT OF TRANSPORTATION Highway Functional Classification

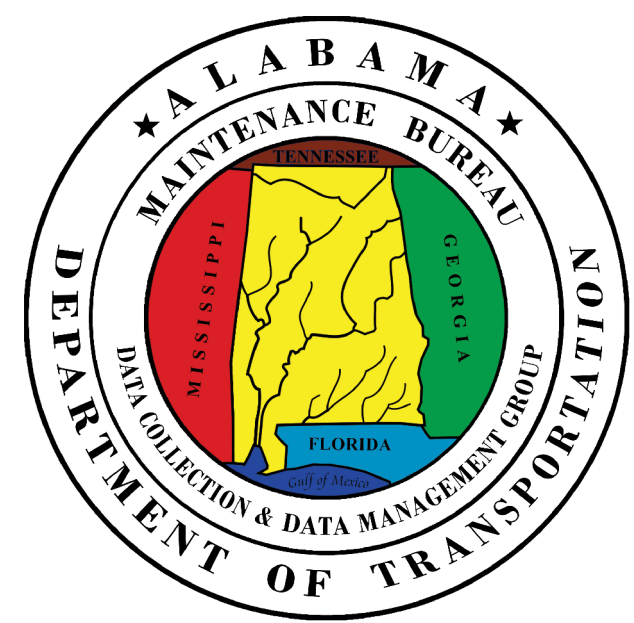
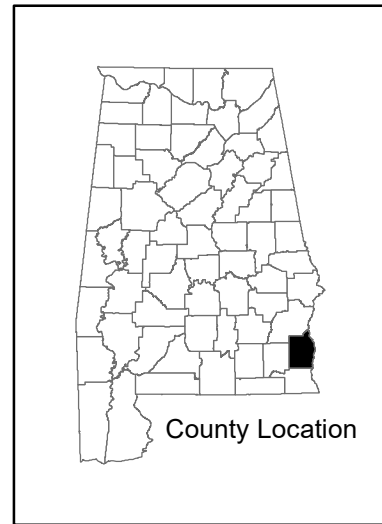


Federal Highway Administration
Alabama Division Office

REVISIONS	
DATE	COMMENTS
May 9, 2019	Reclassified a portion of CR 55 from a Local Rd to a Minor Collector

Disclaimer of Liability
Due to the scale of this map neither the Alabama Department of Transportation (ALDOT) or the State of Alabama nor any employees and contractors thereof make any warranty, expressed or implied, or assume any legal liability or responsibility for the accuracy, completeness, or usefulness of any information contained on this map.

FHWA APPROVAL DATE
DATE: June 20, 2019



LEGEND
Highway Functional Classification

- 1 Interstate
- 2 Principal Arterial-Other Freeways and Expressways
- 3 Principal Arterial-Other
- 4 Minor Arterial
- 5 Major Collector
- 6 Minor Collector
- 7 Local Road
- Proposed Road
- Open Water
- Streams / Creeks
- Swamp / Marsh
- Large Urban Area
- Large Urban Study Area
- Small Urban Area
- Parks
- County Boundary

Railroad
 INTERSTATE
 U.S.
 STATE
 COUNTY
 City Limit