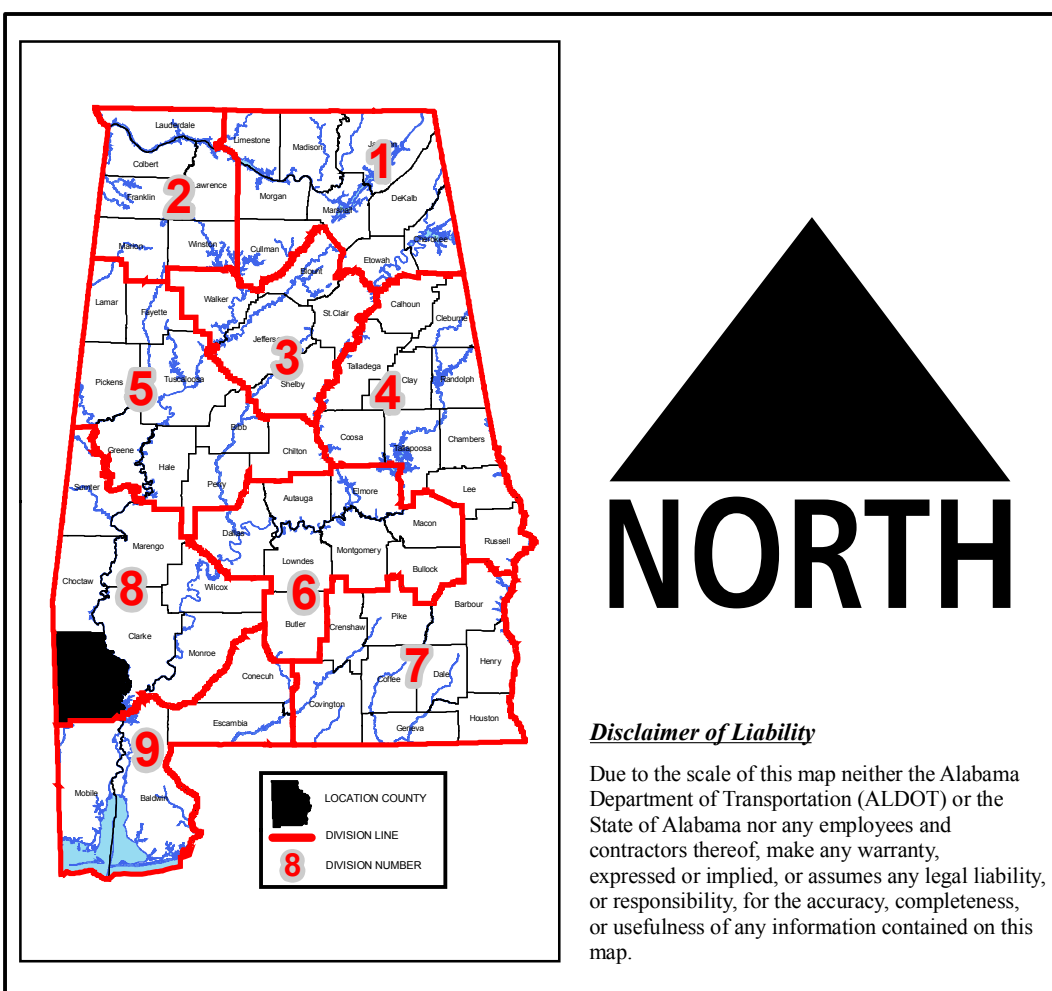
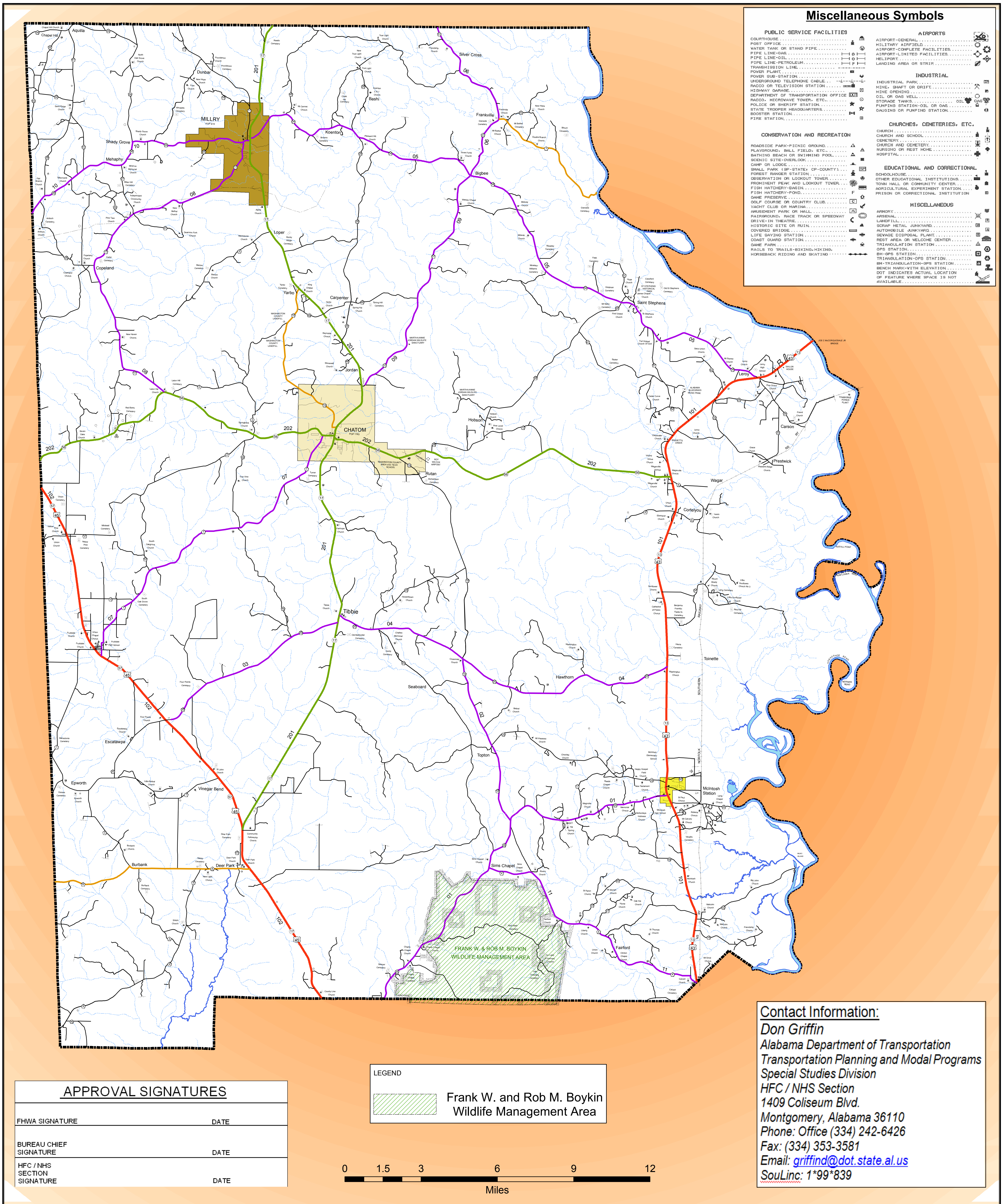


WASHINGTON COUNTY HIGHWAY FUNCTIONAL CLASSIFICATION SYSTEM



WASHINGTON COUNTY - 65

ALABAMA DEPARTMENT OF TRANSPORTATION
 Highway Functional Classification
 Transportation Planning / Modal Programs Bureau

NAME	DATE	COMMENTS

DATE: November 23, 2004
 DRAWN BY: D.H. GRIFFIN
 DATE DRAWN: FEBRUARY 17, 2009

ALABAMA DEPARTMENT OF TRANSPORTATION
 TRANSPORTATION PLANNING AND MODAL PROGRAMS BUREAU
 HFC SECTION

Legend

Functional Classification

- Urban Interstate - 11
- Freeway - 12
- Urban Principal Arterial - 14
- Urban Minor Arterial - 16
- Collector - 17
- Rural Interstate - 1
- Rural Principal Arterial - 2
- Rural Minor Arterial - 6
- Rural Major Collector - 7
- Rural Minor Collector - 8

Proposed Functional Class

- Urban Interstate - 11
- Freeway - 12
- Urban Principal Arterial - 14
- Urban Minor Arterial - 16
- Collector - 17
- Rural Interstate - 1
- Rural Principal Arterial - 2
- Rural Minor Arterial - 6
- Rural Major Collector - 7
- Rural Minor Collector - 8

Miscellaneous Items

- GIS OpenWater_ALDOTDivisions
- GIS NHD_by_County
- GIS_Swamp_Marsh_HR_NHDWB_County
- TRANSDATA.urban_large
- TRANSDATA.urban_large_study
- TRANSDATA.urban_small
- GIS County

Washington County Cities

- Chattom
- McIntosh
- Millry

MAP SCALE
 SEE SCALE ON MAP