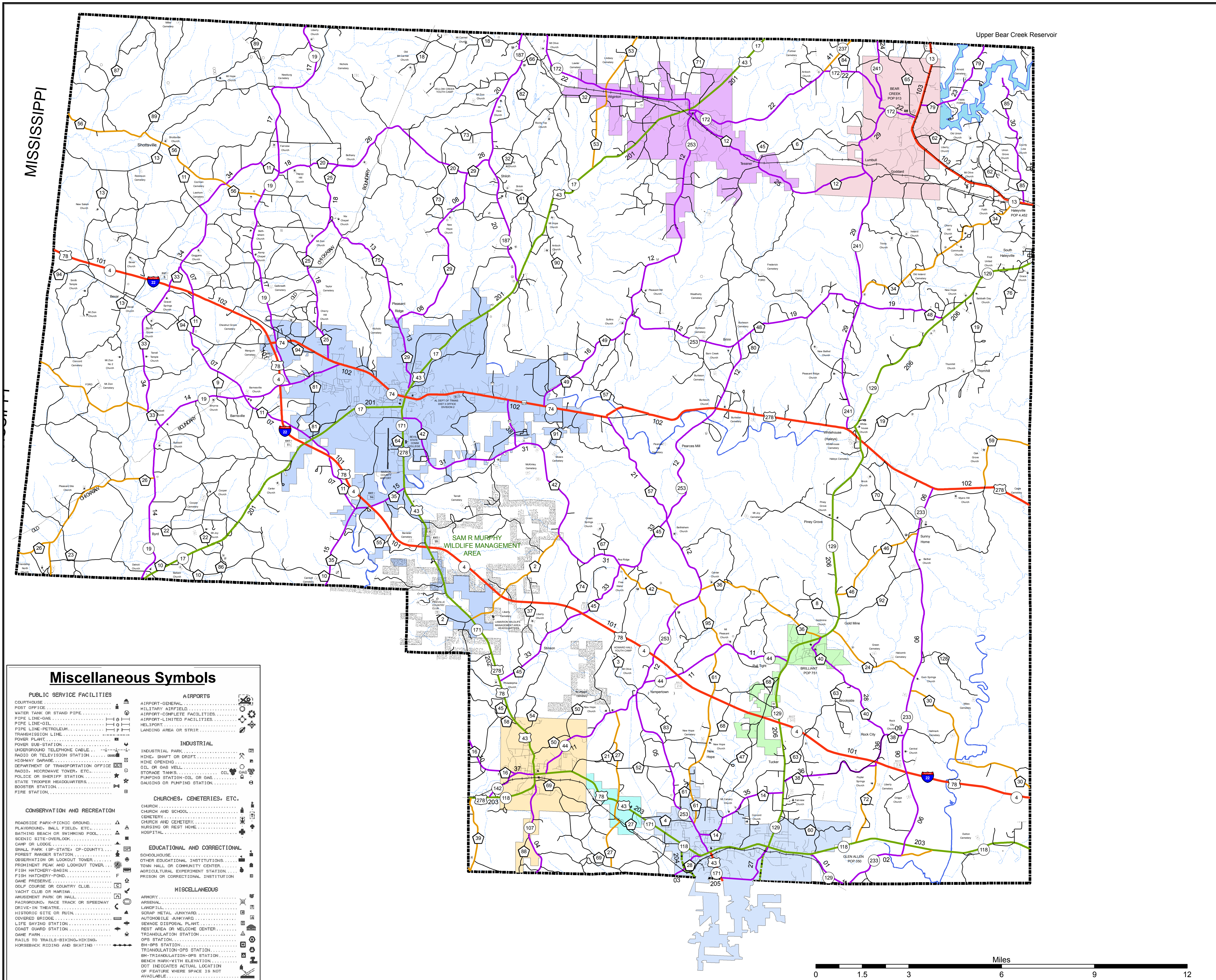


MARION COUNTY HIGHWAY FUNCTIONAL CLASSIFICATION SYSTEM



Legend

Functional Classification

- Urban Interstate - 11
- Freeway - 12
- Urban Principal Arterial - 14
- Urban Minor Arterial - 16
- Collector - 17
- Rural Interstate - 1
- Rural Principal Arterial - 2
- Rural Minor Arterial - 6
- Rural Major Collector - 7
- Rural Minor Collector - 8

Proposed Functional Class

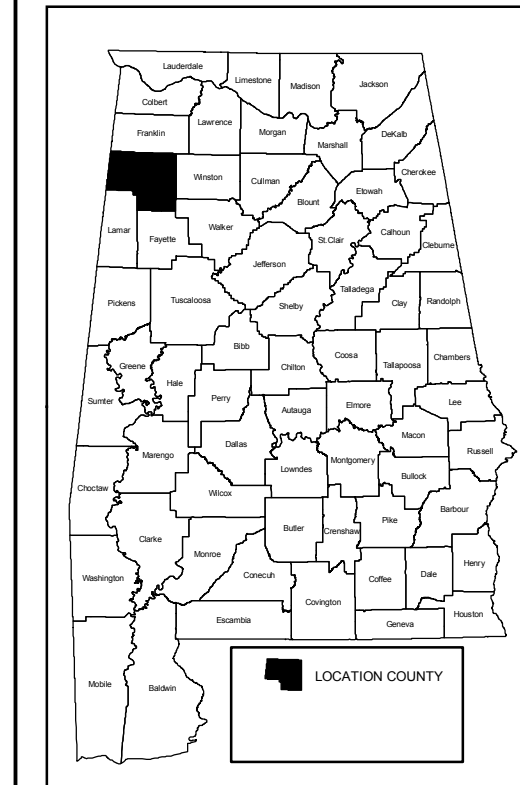
- Urban Interstate - 11
- Freeway - 12
- Urban Principal Arterial - 14
- Urban Minor Arterial - 16
- Collector - 17
- Rural Interstate - 1
- Rural Principal Arterial - 2
- Rural Minor Arterial - 6
- Rural Major Collector - 7
- Rural Minor Collector - 8

Miscellaneous Items

- GIS.OpenWater_ALDOTDivisions
- GIS.NHD_by_County
- GIS_Swamp_Marsh_HR_NHDWB_County
- TRANSDATA.urban_large
- TRANSDATA.urban_large_study
- TRANSDATA.urban_small
- GIS.County

- INTERSTATE
- US ROUTES
- STATE ROUTES
- COUNTY ROADS
- FOREST ROADS
- TRANSDATA.City_Limit
- CITY, CITY_FIPS
- Bear Creek, 04852
- Brilliant, 09424
- Gu-Win, 32536
- Guin, 32224
- Hackleburg, 32560
- Hamilton, 32848
- Winfield, 82992

MAP SCALE
SEE SCALE ON MAP



Disclaimer of Liability

Due to the scale of this map neither the Alabama Department of Transportation (ALDOT) or the State of Alabama nor any employees and contractors thereof, make any warranty, expressed or implied, or assumes any legal liability, or responsibility, for the accuracy, completeness, or usefulness of any information contained on this map.

Miscellaneous Symbols

- | | | | | | |
|---|--|---|---|--|---|
| PUBLIC SERVICE FACILITIES
COURTHOUSE
POST OFFICE
WATER TANK OR STAND PIPE
PIPE LINE-GAS
PIPE LINE-OIL
PIPE LINE-PETROLEUM
TRANSMISSION LINE
POWER SUB-STATION
UNDERGROUND TELEPHONE CABLE
RADIO OR TELEVISION STATION
HIGHWAY DAMAGE
DEPARTMENT OF TRANSPORTATION OFFICE
RADIO, MICROWAVE TOWER, ETC.
POLICE OR SHERIFF STATION
STATE PROOPER HEADQUARTERS
BOOSTER STATION
FIRE STATION | AIRPORTS
AIRPORT-GENERAL
MILITARY AIRFIELD
AIRPORT-COMLETE FACILITIES
AIRPORT-LIMITED FACILITIES
HELIPORT
LANDING AREA OR STRIP | INDUSTRIAL
INDUSTRIAL PARK
MINE, SHAFT OR DRIFT
MINE OPENING
STORAGE TANKS
GROUNDING OR PUMPING STATION | CHURCHES, CEMETERIES, ETC.
CHURCH
CHURCH AND SCHOOL
CEMETERY
CHURCH AND CEMETERY
NURSING OR REST HOME
HOSPITAL | EDUCATIONAL AND CORRECTIONAL
SCHOOLHOUSE
OTHER EDUCATIONAL INSTITUTIONS
TOWN HALL OR COMMUNITY CENTER
AGRICULTURAL EXPERIMENT STATION
PRISON OR CORRECTIONAL INSTITUTION | MISCELLANEOUS
ARMORY
ARSENAL
LANDFILL
SCRAP METAL YARD
AUTOMOBILE YARD
REVERSE DISPOSAL PLANT
REST AREA OR WELCOME CENTER
TRIANGULATION STATION
OPS STATION
BI-OPS STATION
BI-TRIANGULATION-OPS STATION
BEACH MARK-WITH ELEVATION
DOT INDICATES ACTUAL LOCATION OF FEATURE WHERE SPACE IS NOT AVAILABLE |
|---|--|---|---|--|---|

MARION COUNTY - 47

ALABAMA DEPARTMENT OF TRANSPORTATION
Highway Functional Classification
Transportation Planning / Modal Programs Bureau

