



Kay Ivey  
GOVERNOR

**ALABAMA**  
**DEPARTMENT OF TRANSPORTATION**

**AERONAUTICS BUREAU**  
**1409 COLISEUM BOULEVARD**  
**MONTGOMERY, ALABAMA 36110**  
PHONE (334) 242-6820  
FAX (334) 353-6540  
Internet: [www.dot.state.al.us](http://www.dot.state.al.us)



John R. Cooper  
TRANSPORTATION DIRECTOR

May 2, 2023

The Honorable Curtis "Woody" Baird, Mayor  
City of Alexander City  
281 James D. Nabors Drive  
Alexander City, Alabama 35010

**Subject: Annual Inspection Report**  
**Thomas C. Russell Field (ALX)**

Dear Mayor Baird:

An inspection of the Thomas C. Russell Field was conducted by personnel of the Alabama Department of Transportation Aeronautics Bureau on April 12, 2023. The purpose of the inspection was to update the information currently on file regarding the airport and to ascertain compliance with the rules and regulations of the Alabama Department of Transportation governing licensed public-use airports within the State of Alabama.

Attached you will find a copy of the Annual Inspection Report. As noted in the report, the airport meets the requirements for the issuance of an operating license. A signed license document will be mailed separately within a few weeks.

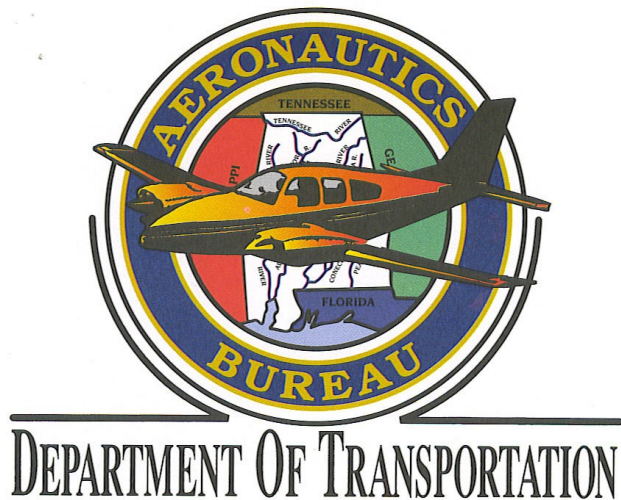
If you should have any questions concerning the inspection or corrective actions, please do not hesitate to contact Mr. Bennett Head with the Aeronautics Bureau at (334) 242-6831.

Sincerely,

Frank Farmer  
Chief, Aeronautics Bureau

Copy: Mr. Rans Black, FAA/ADO  
Mr. Lorn Whittaker, FAA/ADO  
Ms. Jennifer Harp, Garver  
Mr. Jackson Hatton, Airport Manager

**April 12, 2023**



# **ANNUAL INSPECTION REPORT**



**THOMAS C. RUSSELL FIELD  
ALEXANDER CITY, ALABAMA**

## Alabama Department of Transportation Aeronautics Bureau—Annual Airport Inspection Report

In accordance with the provisions of the Code of Alabama 23-1-357, an inspection of the **Thomas C. Russell Field** was conducted by **Mr. Jason Hare, Mr. Bennett Head, and Mr. Mark Bowron** with the Alabama Department of Transportation Aeronautics Bureau on **April 12, 2023**.

The inspection was conducted on the airport under the provisions of the Administrative Code Chapter 450-9-1 for the following areas:

Aeronautics Administrative Code	Inspection Results	Corrective Action	Notes
<b>Approach &amp; Departure Paths</b> Administrative Code 450-9-1-.12 (1)	<i>In Compliance</i>	N/A	No ALDOT violations, however there are several trees that penetrate the FAA Part 77 Surface.
<b>Primary Surface</b> Administrative Code 450-9-1-.12 (2)	<i>In Compliance</i>	N/A	N/A
<b>Runway Safety Area</b> Administrative Code 450-9-1-.12 (3)	<i>In Compliance</i>	N/A	N/A
<b>Airport Markings</b> Administrative Code 450-9-1-.12 (4)	<i>In Compliance</i>  <span style="color: orange; text-align: center;"><i>Maintenance</i></span>	Consult with engineer on next rehab project to remark in accordance with FAA AC 150/5340-1M.	Certain portions of the taxiway and apron markings are in POOR condition.
<b>Wind Direction Indicator</b> Administrative Code 450-9-1-.12 (5)	<i>In Compliance</i>  <span style="color: orange; text-align: center;"><i>Maintenance</i></span>	Windsock should be replaced soon.	Windsock is faded and in fair condition.
<b>Airport Lighting</b> Administrative Code 450-9-1-.12 (6)	<i>In Compliance</i>  <span style="color: orange; text-align: center;"><i>Maintenance</i></span>	Replace bulbs and fix inoperable lights.	During inspection 6 threshold lights, 9 runway lights, and REIL were out of service.
<b>Runway, Taxiway and Apron Conditions</b> Administrative Code 450-9-1-.12 (7)	<i>In Compliance</i>	Consult with engineer about next rehab project.	The Apron and certain portions of the taxiways to hangers are in POOR condition.
<b>Fueling Area Requirements</b> Administrative Code 450-9-1-.12 (8)	<i>In Compliance</i>	N/A	N/A
<b>Prohibited Activities</b> Administrative Code 450-9-1-.16	<i>In Compliance</i>	N/A	N/A
Additional Items	<i>In Compliance</i>	N/A	N/A

### License Status—**COMPLIANCE**

The corrective actions that may be prescribed in this inspection report do not relieve the airport sponsor from compliance with any other Federal, State or local laws, ordinances or regulations that may be applicable. It is the responsibility of the airport sponsor to be aware of and obey all Federal, State or local laws, ordinances or regulations that may have a bearing on the corrective actions that may be specified in this report.

**Code of Alabama 23-1-357(a)**... a person or municipality may not operate an airport, restricted landing area, or other navigation facility without a license issued by this Department.

## Thomas C. Russell Field

### Approach and Departure Paths—RUNWAY 18

Administrative Code 450-9-1-.12(1)



No obstructions located in the ALDOT Approach/Departure Path of Runway 18. However, there are several trees that violate the FAA Part 77 Surface. Please see Appendix #2 for more information.



## Thomas C. Russell Field

### Approach and Departure Paths—RUNWAY 36

Administrative Code 450-9-1-.12(1)



No obstructions located in the ALDOT Approach/Departure Path of Runway 36. However, there are several trees that violate the FAA Part 77 Surface. Please see Appendix #3 for more information.



# Thomas C. Russell Field

## Primary Surface

Administrative Code 450-9-1-.12(2)



Primary Surface **meets** state licensing standards.



## Thomas C. Russell Field

### Runway Safety Area

Administrative Code 450-9-1-.12(3)



Runway Safety Area **meets** state licensing standards.

As noted in the past inspection, the stakes for the runway lights are higher than three inches. Please make sure that the new light stakes do not exceed three inches when the new lights are installed.



## Thomas C. Russell Field

### Airport Markings—Runway

Administrative Code 450-9-1-.12(4)



Runway markings are in **GOOD** condition.



## Thomas C. Russell Field

### Airport Markings—Taxiway

Administrative Code 450-9-1-.12(4)



Taxiway markings to Runway 18 and 36 are in **GOOD** condition.

## Thomas C. Russell Field

### Airport Markings—Taxiway

Administrative Code 450-9-1-.12(4)



Taxiway markings on portions of apron and taxiways to hangars are in **POOR** condition.



## Thomas C. Russell Field

### Airport Markings—Apron

Administrative Code 450-9-1-.12(4)



Apron markings are in **POOR** condition.

## Thomas C. Russell Field

### Wind Direction Indicator

Administrative Code 450-9-1-.12(5)



Wind direction indicator is in **FAIR** condition. Windsock is starting to fade and should be replaced soon.



## Thomas C. Russell Field

### Airport Lighting

Administrative Code 450-9-1-.12(6)

An inspection of the lighting system had the following results:

<b>Runway Lights</b>	9 inoperable
<b>Taxiway Lights</b>	0 inoperable
<b>Threshold Lights</b>	6 inoperable
<b>PAPI</b>	0 inoperable
<b>REIL</b>	Out

**MEETS** State Licensing Standards for night-time operation.

## Thomas C. Russell Field

### Runway, Taxiway and Apron Conditions—RUNWAY

Administrative Code 450-9-1-.12(7)



Runway surface is in **GOOD** condition.



## Thomas C. Russell Field

### Runway, Taxiway and Apron Conditions—TAXIWAY

Administrative Code 450-9-1-.12(7)



Taxiway surface is generally in **GOOD** condition. Taxiway surface to hangars are generally in **POOR** condition.



## Thomas C. Russell Field

### Runway, Taxiway and Apron Conditions—APRON

Administrative Code 450-9-1-.12(7)



Apron surface is overall in **FAIR** to **POOR** conditions in certain areas. There is extensive longitudinal and transverse cracking. There is alligator cracking in certain areas.



## Thomas C. Russell Field

### Fueling Area Requirements

Administrative Code 450-9-1-.12(8)



The fueling area meets the requirements established by the Alabama Department of Transportation. However, the State of Alabama Department of Agriculture may have additional requirements for fueling systems that were not considered during this inspection.



# Thomas C. Russell Field

## Prohibited Activities

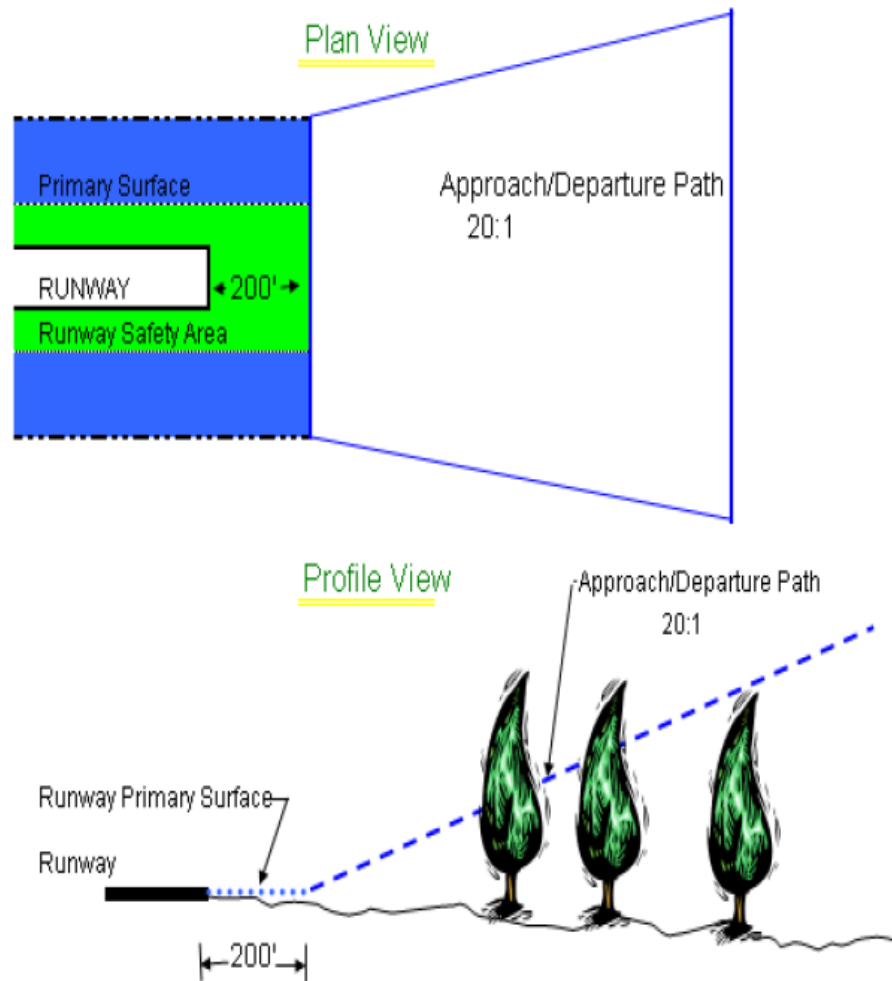
Administrative Code 450-9-1-.16



No prohibited activities were observed during this inspection.

# APPENDIX 1

Approach and Departure Path Dimensions			
Inner Width	Outer Width	Length	Acreage
250 Feet	450 Feet	1,000 Feet	8.04 Acres
Primary Surface Dimensions			
250 Feet Wide Centered Along Runway Centerline			
Extending 200 Feet Past the Runway End			
Runway Safety Area Dimensions			
120 Feet Wide Centered Along Runway Centerline			
Extending 200 Feet Past the Runway End			

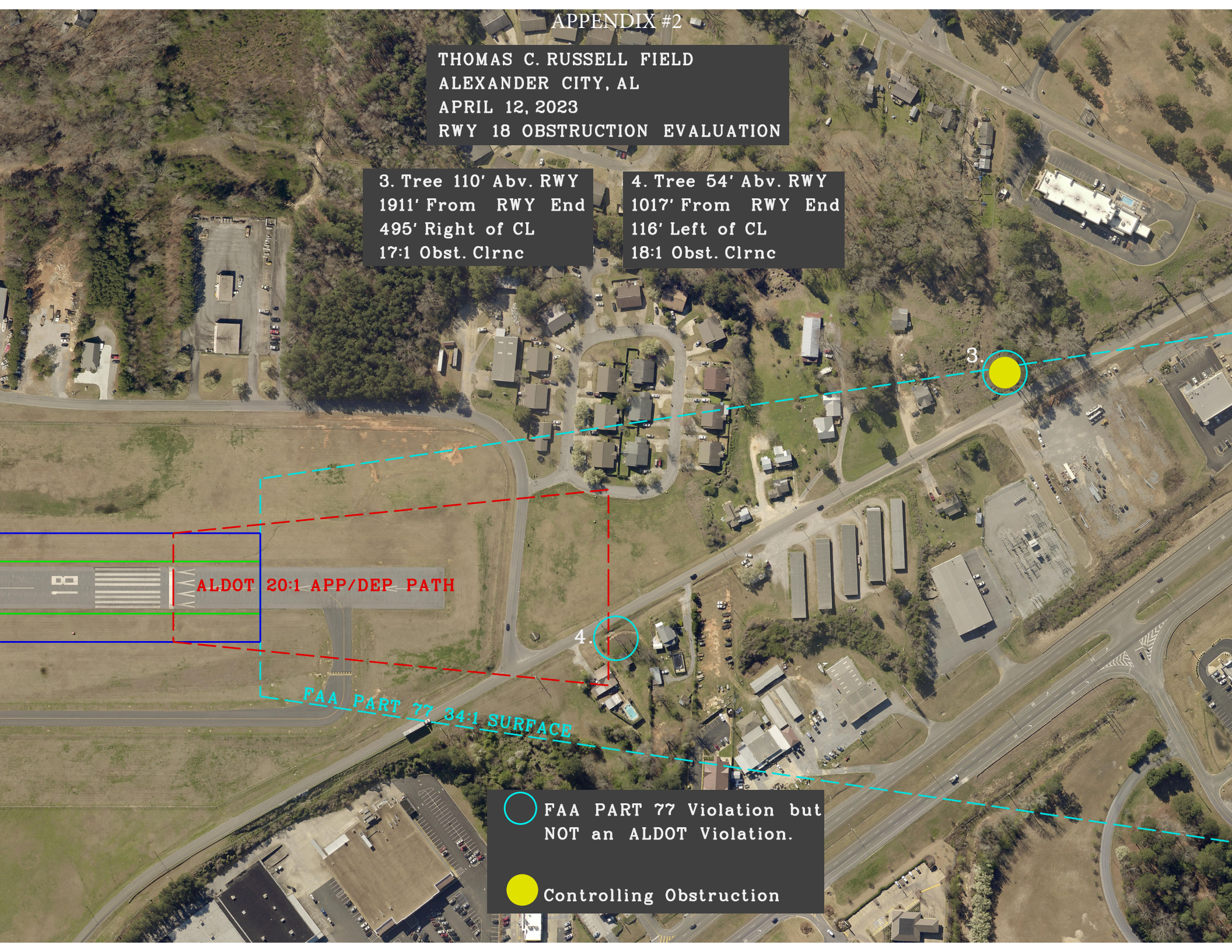




THOMAS C. RUSSELL FIELD  
ALEXANDER CITY, AL  
APRIL 12, 2023  
RWY 18 OBSTRUCTION EVALUATION

3. Tree 110' Abv. RWY  
1911' From RWY End  
495' Right of CL  
17:1 Obst. Clrnc

4. Tree 54' Abv. RWY  
1017' From RWY End  
116' Left of CL  
18:1 Obst. Clrnc



ALDOT 20:1 APP/DEP PATH

FAA PART 77 34:1 SURFACE

○ FAA PART 77 Violation but NOT an ALDOT Violation.

● Controlling Obstruction

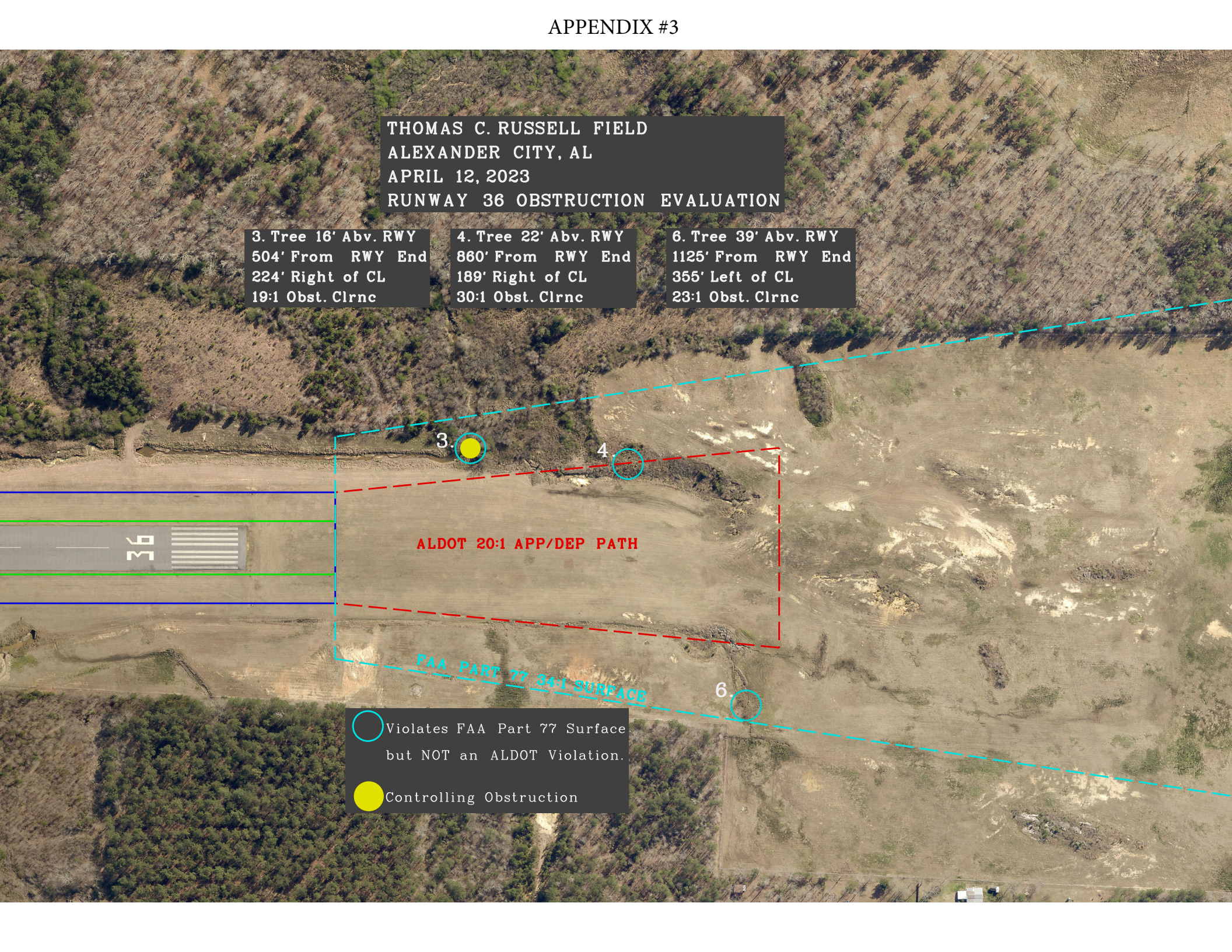



THOMAS C. RUSSELL FIELD  
ALEXANDER CITY, AL  
APRIL 12, 2023  
RUNWAY 36 OBSTRUCTION EVALUATION


3. Tree 16' Abv. RWY  
504' From RWY End  
224' Right of CL  
19:1 Obst. Clrnc

4. Tree 22' Abv. RWY  
860' From RWY End  
189' Right of CL  
30:1 Obst. Clrnc

6. Tree 39' Abv. RWY  
1125' From RWY End  
355' Left of CL  
23:1 Obst. Clrnc



 Violates FAA Part 77 Surface  
but NOT an ALDOT Violation.

 Controlling Obstruction