



Kay Ivey
GOVERNOR

ALABAMA
DEPARTMENT OF TRANSPORTATION

AERONAUTICS BUREAU
1409 COLISEUM BOULEVARD
MONTGOMERY, ALABAMA 36110

PHONE (334) 242-6820

FAX (334) 353-6540

Internet: www.dot.state.al.us



John R. Cooper
TRANSPORTATION DIRECTOR

August 11, 2023

Mr. James A. Johnson
Bessemer Airport Authority
900 Mitchell Field Road
Bessemer, Alabama 35022

Subject: Airport Re-Inspection Report
Bessemer Municipal Airport

Dear Mr. Johnson:

On August 3, 2023, personnel of the Alabama Department of Transportation, Aeronautics Bureau re-inspected Bessemer Municipal Airport. The purpose of the re-inspection was to ascertain actions taken to correct the safety deficiencies noted in the June 1, 2023, inspection report.

A review of the obstruction analysis has concluded that there are still obstructions in the Required ALDOT 20:1 Approach/Departure Paths to the approach end of Runway 23. As a result, the airport **does not** meet the requirements for an operating license. Once the trees have been removed, please contact this office to schedule a reinspection.

The Alabama Department of Transportation wishes to thank you for helping to provide a safe and efficient airport system. If you should have any questions concerning the re-inspection or corrective actions, please do not hesitate to contact Mr. Jason Hare with the Aeronautics Bureau at (334) 242-6820.

Sincerely,

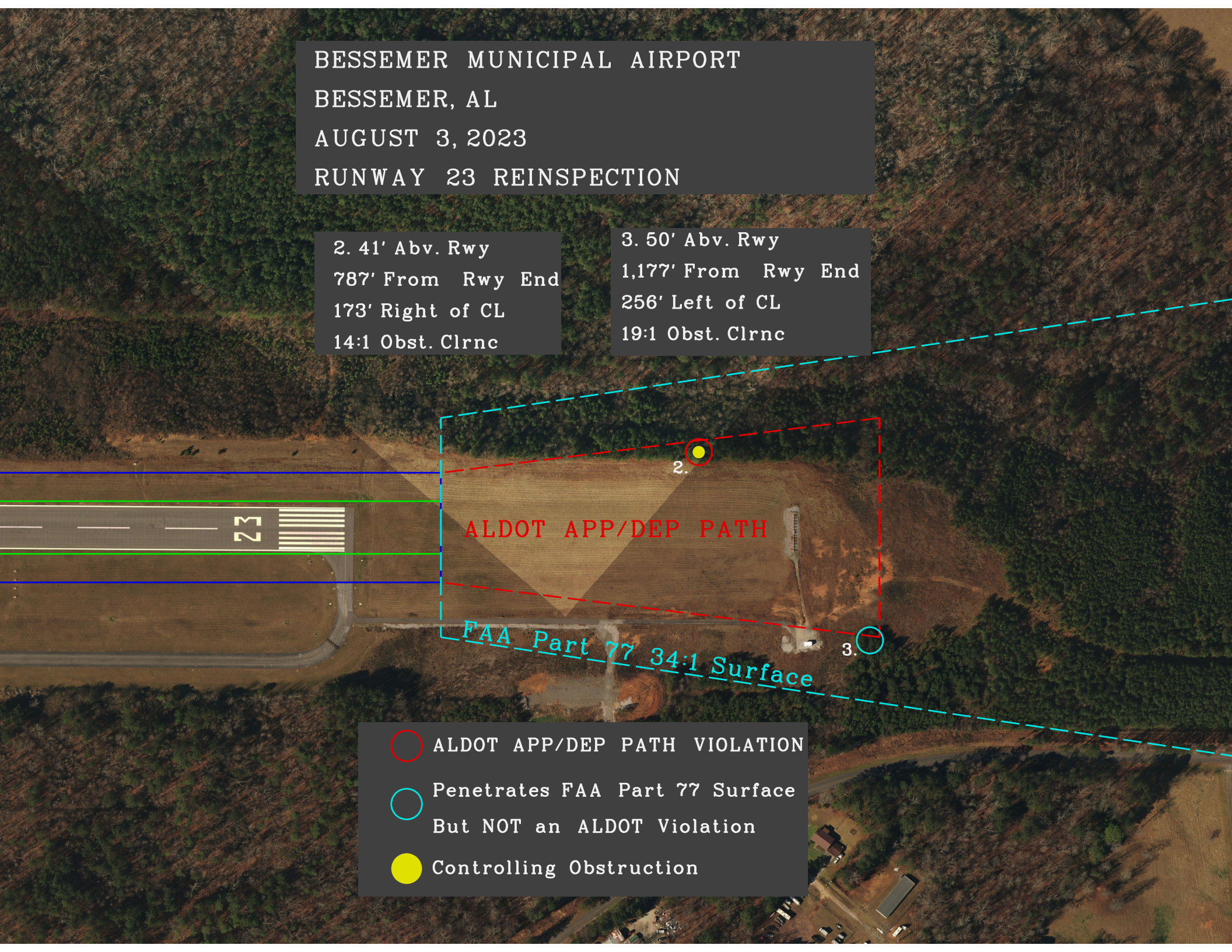
Frank Farmer
Chief, Aeronautics Bureau

Copy: Mr. Tim Wasyluka, Airport Manager
Mr. Rans Black, FAA/ADO
Mr. Jeff Orr, FAA/ADO
Ms. Natalie Hobbs, GMC

BESSEMER MUNICIPAL AIRPORT
BESSEMER, AL
AUGUST 3, 2023
RUNWAY 23 REINSPECTION

2. 41' Abv. Rwy
787' From Rwy End
173' Right of CL
14:1 Obst. Clrnc

3. 50' Abv. Rwy
1,177' From Rwy End
256' Left of CL
19:1 Obst. Clrnc



ALDOT APP/DEP PATH

FAA Part 77 34:1 Surface

- ALDOT APP/DEP PATH VIOLATION
- Penetrates FAA Part 77 Surface
But NOT an ALDOT Violation
- Controlling Obstruction



Kay Ivey
GOVERNOR

ALABAMA
DEPARTMENT OF TRANSPORTATION

AERONAUTICS BUREAU
1409 COLISEUM BOULEVARD
MONTGOMERY, ALABAMA 36110

PHONE (334) 242-6820
FAX (334) 353-6540
Internet: www.dot.state.al.us



John R. Cooper
TRANSPORTATION DIRECTOR

June 15, 2023

Mr. James A. Johnson, Chairman
Bessemer Airport Authority
900 Mitchell Field Road
Bessemer, Alabama 35022

Subject: Annual Inspection Report
Bessemer Municipal Airport

Dear Mr. Johnson:

An inspection of the Bessemer Municipal Airport was conducted by personnel of the Alabama Department of Transportation Aeronautics Bureau on June 1, 2023. The purpose of the inspection was to update the information currently on file regarding the airport and to ascertain compliance with the rules and regulations of the Alabama Department of Transportation governing licensed public-use airports within the State of Alabama.

Attached you will find a copy of the Annual Inspection Report. As noted in the report, the airport **does not meet** the requirements for the issuance of an operating license. Once the violations have been addressed, please contact this office to schedule a re-inspection.

If you should have any questions concerning the inspection or corrective actions, please do not hesitate to contact Mr. Bennett Head with the Aeronautics Bureau at (334) 242-6831.

Sincerely,

Frank Farmer
Chief, Aeronautics Bureau

Copy: Mr. Rans Black, FAA/ADO
Mr. Jeff Orr, FAA/ADO
Ms. Natalie Hobbs, GMC
Mr. Tim Wasyluka, Airport Manager

Alabama Department of Transportation Aeronautics Bureau—Annual Airport Inspection Report

In accordance with the provisions of the Code of Alabama 23-1-357, an inspection of the **Bessemer Municipal Airport** was conducted by **Mr. Bennett Head** with the Alabama Department of Transportation Aeronautics Bureau on **June 1, 2023**.

The inspection was conducted on the airport under the provisions of the Administrative Code Chapter 450-9-1 for the following areas:

Aeronautics Administrative Code	Inspection Results	Corrective Action	Notes
Approach & Departure Paths Administrative Code 450-9-1-.12 (1)	<i>VIOLATION</i>	Remove penetrations to the ALDOT Approach/Departure Path.	Penetrations to the ALDOT Approach/Departure path on RWY 23 end. FAA Part 77 penetrations are located on both RWY 23 and RWY 5 ends.
Primary Surface Administrative Code 450-9-1-.12 (2)	<i>In Compliance</i>	N/A	N/A
Runway Safety Area Administrative Code 450-9-1-.12 (3)	<i>In Compliance</i>	N/A	N/A
Airport Markings Administrative Code 450-9-1-.12 (4)	<i>In Compliance</i>	N/A	Apron Markings in Fair condition.
Wind Direction Indicator Administrative Code 450-9-1-.12 (5)	<i>In Compliance</i> <i>Maintenance</i>	Repaint Segmented Circle.	The paint on the segmented circle is beginning to fade/ crack.
Airport Lighting Administrative Code 450-9-1-.12 (6)	<i>In Compliance</i>	N/A	N/A
Runway, Taxiway and Apron Conditions Administrative Code 450-9-1-.12 (7)	<i>In Compliance</i> <i>Maintenance</i>	Remove FOD from Taxiway Surface.	One portion of the taxiway surface around the hangars is in POOR condition and has a substantial amount of FOD on the pavement.
Fueling Area Requirements Administrative Code 450-9-1-.12 (8)	<i>In Compliance</i> <i>Maintenance</i>	N/A	N/A
Prohibited Activities Administrative Code 450-9-1-.16	<i>In Compliance</i>	N/A	N/A
Additional Items	<i>In Compliance</i>	N/A	N/A

License Status—SUSPENDED

The corrective actions that may be prescribed in this inspection report do not relieve the airport sponsor from compliance with any other Federal, State or local laws, ordinances or regulations that may be applicable. It is the responsibility of the airport sponsor to be aware of and obey all Federal, State or local laws, ordinances or regulations that may have a bearing on the corrective actions that may be specified in this report.

Code of Alabama 23-1-357(a)... a person or municipality may not operate an airport, restricted landing area, or other navigation facility without a license issued by this Department.

Bessemer Municipal Airport

Approach and Departure Paths—RUNWAY 5

Administrative Code 450-9-1-.12(1)



No obstructions located in the ALDOT Approach/Departure Path of Runway 5. However, there were several penetrations to the FAA Part 77 Surface. Please see Appendix #2 for more information.

Bessemer Municipal Airport

Approach and Departure Paths—RUNWAY 23

Administrative Code 450-9-1-.12(1)



Violation: There are three obstructions located in the ALDOT Approach/Departure Path of Runway 23. Please remove the listed violations as soon as possible. Additionally, there were several FAA Part 77 penetrations. Please see Appendix #3 for more information.

Note: Obstructions found are representative and may not show all existing penetrations to the ALDOT Approach/Departure Path.

Bessemer Municipal Airport

Primary Surface

Administrative Code 450-9-1-.12(2)



Primary Surface **meets** state licensing standards.

Bessemer Municipal Airport

Runway Safety Area

Administrative Code 450-9-1-.12(3)



Runway Safety Area **meets** state licensing standards.

Bessemer Municipal Airport

Airport Markings—Runway

Administrative Code 450-9-1-.12(4)



Runway markings are in **GOOD** condition.

Bessemer Municipal Airport

Airport Markings—Taxiway

Administrative Code 450-9-1-.12(4)



Taxiway markings are in **GOOD** condition.

Bessemer Municipal Airport

Airport Markings—Apron

Administrative Code 450-9-1-.12(4)



Apron markings are in **FAIR** condition.

Bessemer Municipal Airport

Wind Direction Indicator

Administrative Code 450-9-1-.12(5)



Wind direction indicator is in **FAIR** condition. However, the paint on the segmented circle is beginning to fade and chip.

Maintenance: Repaint the segmented circle.

Bessemer Municipal Airport

Airport Lighting

Administrative Code 450-9-1-.12(6)

An inspection of the lighting system had the following results:

Runway Lights	0 inoperable
Taxiway Lights	0 inoperable
Threshold Lights	0 inoperable
PAPI	0 inoperable
REIL	0 inoperable

MEETS State Licensing Standards for night-time operation.

Bessemer Municipal Airport

Runway, Taxiway and Apron Conditions—RUNWAY

Administrative Code 450-9-1-.12(7)



Runway surface is in **GOOD** condition.

Bessemer Municipal Airport

Runway, Taxiway and Apron Conditions—TAXIWAY

Administrative Code 450-9-1-.12(7)



The taxiway surface is generally in **GOOD** condition. However, there is one portion of the taxiway surface that leads to hangars that is in **POOR** condition. Additionally, the surface around the hangars has a substantial amount of FOD on the pavement surface.

Maintenance: Remove FOD from taxiway that is on pavement surface leading to the hangars.

Bessemer Municipal Airport

Runway, Taxiway and Apron Conditions—APRON

Administrative Code 450-9-1-.12(7)



The main apron surface in front of the terminal building is in **FAIR** condition. However, the apron located Southwest of the terminal apron is in **POOR** condition. Additionally, the Apron surface is in poor condition and experiencing moderate cracking and vegetation growth.

Bessemer Municipal Airport

Fueling Area Requirements

Administrative Code 450-9-1-.12(8)



The fueling area meets the requirements established by the Alabama Department of Transportation. However, the State of Alabama Department of Agriculture may have additional requirements for fueling systems that were not considered during this inspection.

Bessemer Municipal Airport

Prohibited Activities

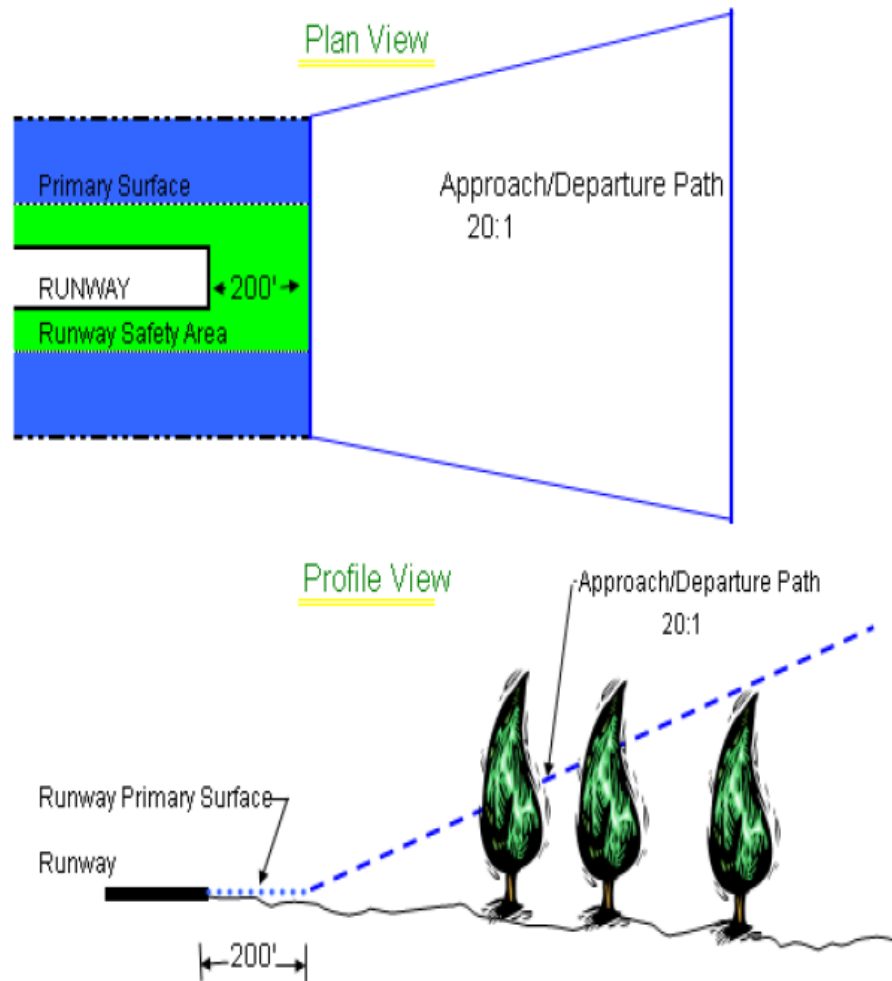
Administrative Code 450-9-1-.16



No prohibited activities were observed during this inspection.

APPENDIX 1

Approach and Departure Path Dimensions			
Inner Width	Outer Width	Length	Acreage
250 Feet	450 Feet	1,000 Feet	8.04 Acres
Primary Surface Dimensions			
250 Feet Wide Centered Along Runway Centerline			
Extending 200 Feet Past the Runway End			
Runway Safety Area Dimensions			
120 Feet Wide Centered Along Runway Centerline			
Extending 200 Feet Past the Runway End			



BESSEMER MUNICIPAL AIRPORT

BESSEMER, AL

6/1/23

RUNWAY 5 OBSTRUCTION EVALUATION

1. Tree 41' Abv. Rwy
472' From Rwy
433' Right of CL
6:1 Obst. Clrnc

2. Tree 43' Abv. Rwy
874' From Rwy
580' Right of CL
15:1 Obst. Clrnc

4. Tree 29' Abv. Rwy
1,102' From Rwy
282' Right of CL
31:1 Obst. Clrnc

5. Tree 12' Abv. Rwy
597' From Rwy
175' Left of CL
33:1 Obst. Clrnc

6. Tree 14' Abv. Rwy
445' From Rwy
171' Left of CL
17:1 Obst. Clrnc



 Penetrates FAA Part 77 Surface
But NOT an ALDOT Violation.

 Controlling Obstruction

BESSEMER MUNICIPAL AIRPORT

BESSEMER, AL

6/1/23

RUNWAY 23 OBSTRUCTION EVALUATION

1. 31' Abv. Rwy

339' From Rwy End

179' Right of CL

4:1 Obst. Clrnc

2. 31' Abv. Rwy

443' From Rwy End

176' Right of CL

7:1 Obst. Clrnc

3. 36' Abv. Rwy

678' From Rwy End

175' Right of CL

13:1 Obst. Clrnc

4. 45' Abv. Rwy

1,047' From Rwy End

206' Right of CL

18:1 Obst. Clrnc

5. 58' Abv. Rwy




1,151' From Rwy End

244' Left of CL

16:1 Obst. Clrnc

ALDOT APP/DEP PATH

FAA Part 77 34:1 Surface

-  ALDOT APP/DEP PATH VIOLATION
-  Penetrates FAA Part 77 Surface
But NOT an ALDOT Violation
-  Controlling Obstruction