



Kay Ivey
GOVERNOR

ALABAMA
DEPARTMENT OF TRANSPORTATION

AERONAUTICS BUREAU
1409 COLISEUM BOULEVARD
MONTGOMERY, ALABAMA 36110
PHONE (334) 242-6820
FAX (334) 353-6540
Internet: www.dot.state.al.us



John R. Cooper
TRANSPORTATION DIRECTOR

March 5, 2024

The Honorable Jack Tibbs, Jr.
Mayor, City of Eufaula
P.O. Box 219
Eufaula, Alabama 36072

Subject: Annual Inspection Report
Weeden Field Airport

Dear Mayor Tibbs:

An inspection of the Weeden Field Airport was conducted by personnel of the Alabama Department of Transportation Aeronautics Bureau on February 29, 2024. The purpose of the inspection was to update the information currently on file regarding the airport and to ascertain compliance with the rules and regulations of the Alabama Department of Transportation governing licensed public-use airports within the State of Alabama.

Attached you will find a copy of the Annual Inspection Report for the airport. As noted in the report, the airport ***does not meet*** all requirements for the issuance of an operating license. Once the trees have been cut, please contact this office to schedule a re-inspection. Failure to correct the violations noted in the attached report within 360 days could result in the revocation of the airport's operating license.

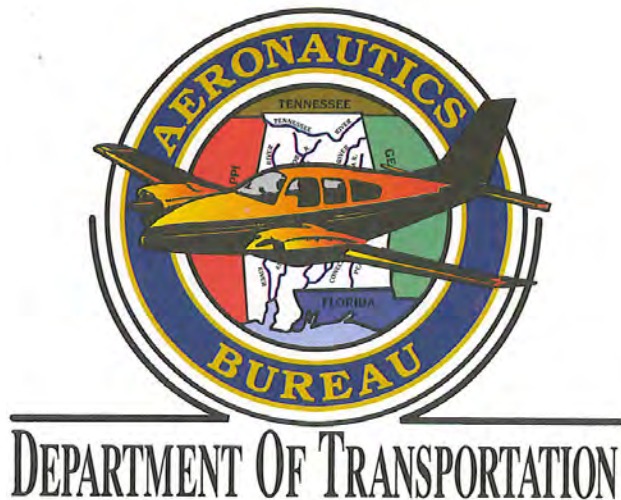
If you should have any questions concerning the inspection or corrective actions, please do not hesitate to contact Mr. Caleb Nall with the Aeronautics Bureau at (334) 312-6748.

Sincerely,

Frank Farmer
Chief, Aeronautics Bureau

Copy: Mr. Rans Black, FAA/ADO
Mr. Luke Flowers, FAA/ADO
Ms. Joy White, City of Eufaula
Mr. Keith Shippey, Barge Design Solutions

February 29, 2024



ANNUAL INSPECTION REPORT



**WEEDON FIELD AIRPORT
EUFAULA, ALABAMA**

Alabama Department of Transportation Aeronautics Bureau—Annual Airport Inspection Report

In accordance with the provisions of the Code of Alabama 23-1-357, an inspection of the **Eufaula Municipal Airport** was conducted by **Mr. Caleb Nall** with the Alabama Department of Transportation Aeronautics Bureau on **February 29, 2024**.

The inspection was conducted on the airport under the provisions of the Administrative Code Chapter 450-9-1 for the following areas:

Aeronautics Administrative Code	Inspection Results	Corrective Action	Notes
Approach & Departure Paths Administrative Code 450-9-1-.12 (1)	<i>Violation</i>	Remove all obstructions within the ALDOT Approach/Departure Path and the FAA Part 77 Surface.	Trees were observed in the ALDOT Approach/Departure Path and the FAA Part 77 Surface.
Primary Surface Administrative Code 450-9-1-.12 (2)	<i>In Compliance</i>	N/A	N/A
Runway Safety Area Administrative Code 450-9-1-.12 (3)	<i>In Compliance</i>	N/A	N/A
Airport Markings Administrative Code 450-9-1-.12 (4)	<i>In Compliance</i> <i>Maintenance</i>	Clean the Runway markings so they are more visible.	Some of the runway markings are dirty and obscured.
Wind Direction Indicator Administrative Code 450-9-1-.12 (5)	<i>In Compliance</i>	N/A	N/A
Airport Lighting Administrative Code 450-9-1-.12 (6)	<i>In Compliance</i> <i>Maintenance</i>	The non-operational lights need to be replaced.	There were 21 lights out at the time of inspection. See page 10.
Runway, Taxiway and Apron Conditions Administrative Code 450-9-1-.12 (7)	<i>In Compliance</i> <i>Maintenance</i>	Clear all vegetation from apron.	There are certain portions of the apron that have grass growing through the pavement.
Fueling Area Requirements Administrative Code 450-9-1-.12 (8)	<i>In Compliance</i>	N/A	N/A
Prohibited Activities Administrative Code 450-9-1-.16	<i>In Compliance</i>	N/A	No evidence of prohibited activities were found.
Additional Items	<i>In Compliance</i>	N/A	N/A

License Status—Probationary: *Violations should be corrected within 360 days.*

The corrective actions that may be prescribed in this inspection report do not relieve the airport sponsor from compliance with any other Federal, State or local laws, ordinances or regulations that may be applicable. It is the responsibility of the airport sponsor to be aware of and obey all Federal, State or local laws, ordinances or regulations that may have a bearing on the corrective actions that may be specified in this report.

Code of Alabama 23-1-357(a)... a person or municipality may not operate an airport, restricted landing area, or other navigation facility without a license issued by this Department.

Weedon Field Airport

Approach and Departure Paths—RUNWAY 18

Administrative Code 450-9-1-.12(1)



Obstructions were located in the ALDOT Approach/Departure Path of Runway 18. Additionally, there are obstructions that penetrate the FAA Part 77 Surface. Please see Appendix 2 for more information.

Note: Obstructions identified are representative and may not include all existing obstructions.

Weedon Field Airport

Approach and Departure Paths—RUNWAY 36

Administrative Code 450-9-1-.12(1)



Obstructions were located in the ALDOT Approach/Departure Path of Runway 36. Additionally, there are obstructions that penetrate the FAA Part 77 Surface. Please see Appendix 3 for more information.

Note: Obstructions identified are representative and may not include all existing obstructions.

Weedon Field Airport

Primary Surface

Administrative Code 450-9-1-.12(2)



Primary Surface **MEETS** state licensing standards.

Weedon Field Airport

Runway Safety Area

Administrative Code 450-9-1-.12(3)



Runway Safety Area **MEETS** state licensing standards.

Weedon Field Airport

Airport Markings—Runway

Administrative Code 450-9-1-.12(4)



Runway markings are in **FAIR** condition.

Maintenance: Some of the runway markings are becoming dirty and obscured and need to be cleaned.

Weedon Field Airport

Airport Markings—Taxiway

Administrative Code 450-9-1-.12(4)



Taxiway markings are in **FAIR** condition.

Weedon Field Airport

Airport Markings—Apron

Administrative Code 450-9-1-.12(4)



Apron markings are in **GOOD** condition.

Weedon Field Airport

Wind Direction Indicator

Administrative Code 450-9-1-.12(5)



Wind direction indicator is in **GOOD** condition.

Weedon Field Airport

Airport Lighting

Administrative Code 450-9-1-.12(6)

An inspection of the lighting system had the following results:

Runway Lights	8 inoperable
Taxiway Lights	10 inoperable
Threshold Lights	3 inoperable
PAPI	0 inoperable
REIL	N/A

MEETS State Licensing Standards for night-time operation.

Weedon Field Airport

Runway, Taxiway and Apron Conditions—RUNWAY

Administrative Code 450-9-1-.12(7)



Runway surface is in **GOOD** condition.

Weedon Field Airport

Runway, Taxiway and Apron Conditions—TAXIWAY

Administrative Code 450-9-1-.12(7)



Taxiway surface is in **FAIR** condition.

Weedon Field Airport

Runway, Taxiway and Apron Conditions—APRON

Administrative Code 450-9-1-.12(7)



Apron surface is in **FAIR** condition.

Maintenance: Apron should be cleaned of all vegetation.

Weedon Field Airport

Fueling Area Requirements

Administrative Code 450-9-1-.12(8)



Fueling area **MEETS** state licensing standards. However, the State of Alabama Department of Agriculture may have additional requirements for fueling systems that were not considered during this inspection.

Weedon Field Airport

Prohibited Activities

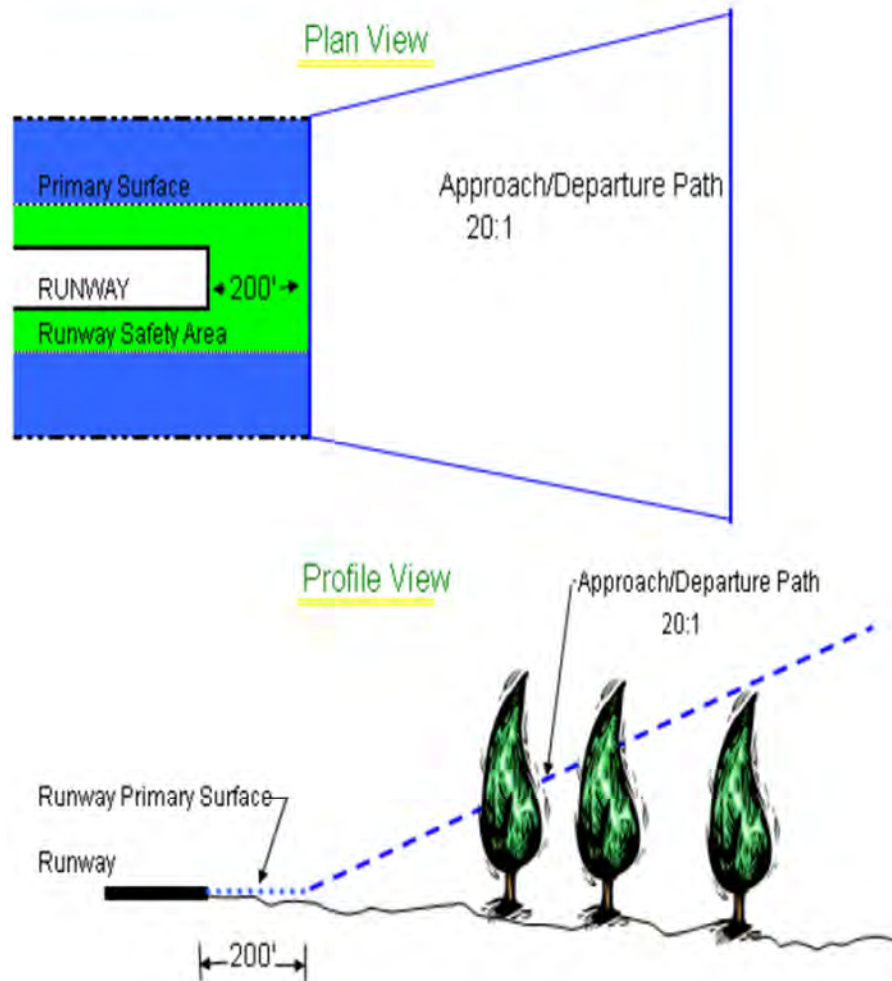
Administrative Code 450-9-1-.16



No prohibited activities were observed during this inspection. All gates were locked and airfield access was secure.

APPENDIX 1

Approach and Departure Path Dimensions			
Inner Width	Outer Width	Length	Acreage
250 Feet	450 Feet	1,000 Feet	8.04 Acres
Primary Surface Dimensions			
250 Feet Wide Centered Along Runway Centerline			
Extending 200 Feet Past the Runway End			
Runway Safety Area Dimensions			
120 Feet Wide Centered Along Runway Centerline			
Extending 200 Feet Past the Runway End			



Appendix 2

Weedon Field Airport
Eufaula, AL
Runway 18
Obstruction Evaluation
February 29, 2024

1. Tree 17' Abv RWY End
325' From RWY End
102' Right of CL
7:1 Obstruction Clearance

2. Tree 22' Abv RWY End
921' From RWY End
121' Right of CL
32:1 Obstruction Clearance

3. Tree 91' Abv RWY End
2,825' From RWY End
129' Right of CL
28:1 Obstruction Clearance

4. Tree 21' Abv RWY End
910' From RWY End
17' Left of CL
33:1 Obstruction Clearance

5. Tree 51' Abv RWY End
958' From RWY End
269' Left of CL
14:1 Obstruction Clearance

6. Tree 55' Abv RWY End
730' From RWY End
296' Left of CL
9:1 Obstruction Clearance



- ALDOT APP/DEP VIOLATION
- FAA PART 77 VIOLATION
- Controlling Obstruction

Appendix 3

Weedon Field Airport
Eufaula, AL
Runway 36
Obstruction Evaluation
Febraury 29, 2024

1. Tree 8' Abv RWY End
394' From RWY End
148' Right of CL
24:1 Obstruction Clearance

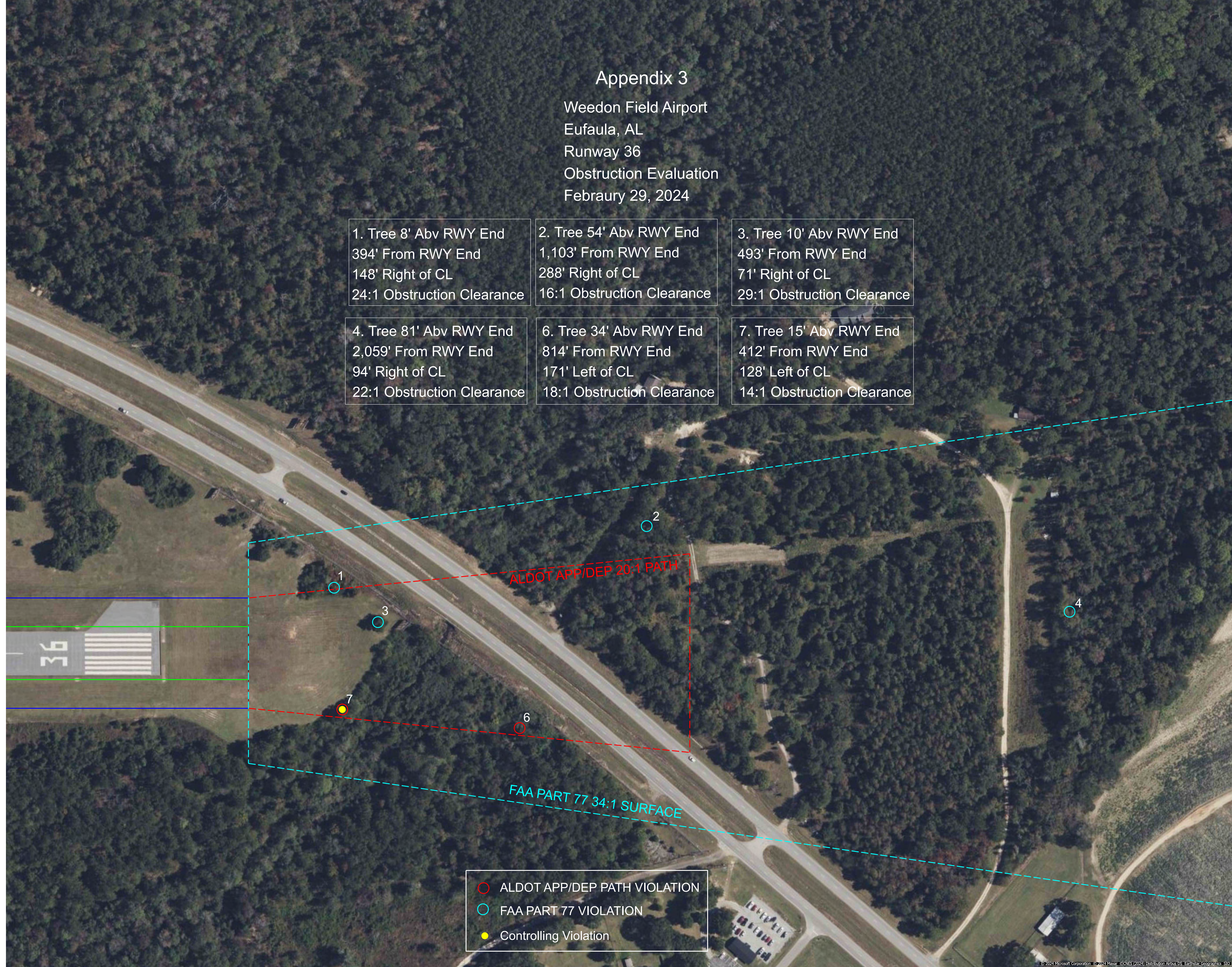
2. Tree 54' Abv RWY End
1,103' From RWY End
288' Right of CL
16:1 Obstruction Clearance

3. Tree 10' Abv RWY End
493' From RWY End
71' Right of CL
29:1 Obstruction Clearance

4. Tree 81' Abv RWY End
2,059' From RWY End
94' Right of CL
22:1 Obstruction Clearance

6. Tree 34' Abv RWY End
814' From RWY End
171' Left of CL
18:1 Obstruction Clearance

7. Tree 15' Abv RWY End
412' From RWY End
128' Left of CL
14:1 Obstruction Clearance



- ALDOT APP/DEP PATH VIOLATION
- FAA PART 77 VIOLATION
- Controlling Violation