



Kay Ivey
GOVERNOR

ALABAMA
DEPARTMENT OF TRANSPORTATION
AERONAUTICS BUREAU
1409 COLISEUM BOULEVARD
MONTGOMERY, ALABAMA 36130
PHONE (334) 242-6820
FAX (334) 353-6540



John R. Cooper
TRANSPORTATION DIRECTOR

March 5, 2024

Mr. Anthony Tarver
Airport Manager
185 Ira Gray Drive
Gadsden, Alabama 35904-8220

**Subject: Annual Inspection Report
Northeast Alabama Regional Airport (GAD)**

Dear Mr. Tarver:

An inspection of the Northeast Alabama Regional Airport was conducted by personnel of the Alabama Department of Transportation Aeronautics Bureau on February 7, 2024. The purpose of the inspection was to update the information currently on file regarding the airport and to ascertain compliance with the rules and regulations of the Alabama Department of Transportation governing licensed public-use airports within the State of Alabama.

Attached you will find a copy of the Annual Inspection Report for the airport. As noted in the report, the airport meets all the requirements for the issuance of an operating license. However, there are several maintenance items detailed in the report that need to be addressed.

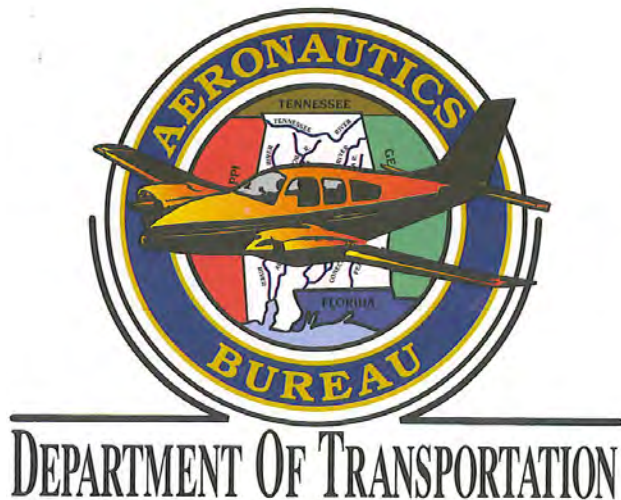
If you should have any questions concerning the inspection, please do not hesitate to contact Mr. Noah Sowell with the Aeronautics Bureau at (334) 242-6831.

Sincerely,

Frank Farmer
Chief, Aeronautics Bureau

Copy: Mr. Lorn Whittaker, FAA/ADO
Mr. Jordan Russell, GMC
Mr. Randall Gober, Line Supervisor

February 7, 2024



ANNUAL INSPECTION REPORT



**NORTHEAST ALABAMA REGIONAL AIRPORT
GADSDEN, ALABAMA**

Alabama Department of Transportation Aeronautics Bureau—Annual Airport Inspection Report

In accordance with the provisions of the Code of Alabama 23-1-357, an inspection of the ***Northeast Alabama Regional Airport*** was conducted by **Mr. Noah Sowell and Mr. Caleb Nall** with the Alabama Department of Transportation Aeronautics Bureau on ***February 7, 2024***.

The inspection was conducted on the airport under the provisions of the Administrative Code Chapter 450-9-1 for the following areas:

Aeronautics Administrative Code	Inspection Results	Corrective Action	Notes
Approach & Departure Paths Administrative Code 450-9-1-.12 (1)	<i>In Compliance</i> <i>Maintenance</i>	Remove trees that penetrate the FAA Part 77 surfaces of Runways 6, 18, 24 and 36 .	There are several trees that penetrate the FAA Part 77 surfaces of Runways 6, 18, 24 and 36 . See Appendices #2, #3, #4 and #5.
Primary Surface Administrative Code 450-9-1-.12 (2)	<i>In Compliance</i> <i>Maintenance</i>	Please talk to your Airport Consultant about a possible project to improve the drainage in this area.	There is ponding inside the Primary Surface of Runway 36.
Runway Safety Area Administrative Code 450-9-1-.12 (3)	<i>In Compliance</i> <i>Maintenance</i>	Please clear the Runway Safety Area of loose pavement fragments and gravel to mitigate FOD.	The edges of Runway 18/36 are severely cracked and have generated a large amount of gravel and loose pavement inside the Runway Safety Area.
Airport Markings Administrative Code 450-9-1-.12 (4)	<i>In Compliance</i> <i>Maintenance</i>	Please clean obscured or faded markings where possible and, if necessary, repaint markings in accordance with FAA AC 150/5340-1M.	There are several Runway, Taxiway and Apron markings that are obscured or entirely faded. See pages 8-11.
Wind Direction Indicator Administrative Code 450-9-1-.12 (5)	<i>In Compliance</i> <i>Maintenance</i>	Please replace the noted wind direction indicator as soon as possible.	There is one wind direction indicator that is slightly faded on the airfield.
Airport Lighting Administrative Code 450-9-1-.12 (6)	<i>In Compliance</i> <i>Maintenance</i>	Repair inoperable airfield lights.	There were four airfield lights inoperable at the time of inspection. See page 13.
Runway, Taxiway and Apron Conditions Administrative Code 450-9-1-.12 (7)	<i>In Compliance</i> <i>Maintenance</i>	Please repair cracks and clear vegetation from pavement cracks.	Runway 18/36 surface exhibits slight cracking on some areas of the pavement surface. Vegetation is growing inside some of these cracks. The apron surface is slightly cracked.
Fueling Area Requirements Administrative Code 450-9-1-.12 (8)	<i>In Compliance</i>	N/A	N/A
Prohibited Activities Administrative Code 450-9-1-.16	<i>In Compliance</i>	N/A	No evidence of prohibited activities were found.
Additional Items	<i>In Compliance</i>	N/A	N/A

License Status— Compliance

The corrective actions that may be prescribed in this inspection report do not relieve the airport sponsor from compliance with any other Federal, State or local laws, ordinances or regulations that may be applicable. It is the responsibility of the airport sponsor to be aware of and obey all Federal, State or local laws, ordinances or regulations that may have a bearing on the corrective actions that may be specified in this report.

Code of Alabama 23-1-357(a)... a person or municipality may not operate an airport, restricted landing area, or other navigation facility without a license issued by this Department.

Northeast Alabama Regional Airport

Approach and Departure Paths—Runway 6

Administrative Code 450-9-1-.12(1)



MAINTENANCE: There were no obstructions in the ALDOT Approach/Departure Path of Runway 6. However, there are **two** trees that penetrate the FAA Part 77 34:1 Surface. **Please see Appendix #2.**

Note: Obstructions identified are representative and may not include all existing obstructions.

Northeast Alabama Regional Airport

Approach and Departure Paths—Runway 18

Administrative Code 450-9-1-.12(1)



MAINTENANCE: There were no obstructions in the ALDOT Approach/Departure Path of Runway 18. However, there are **four** trees that penetrate the FAA Part 77 Surface. **Please see Appendix #3.**

Note: Obstructions identified are representative and may not include all existing obstructions.

Northeast Alabama Regional Airport

Approach and Departure Paths—Runway 24

Administrative Code 450-9-1-.12(1)



MAINTENANCE: There were no obstructions in the ALDOT Approach/Departure Path of Runway 24. However, there is **one** tree that penetrates the FAA Part 77 Surface. **Please see Appendix #4.**

Note: Obstructions identified are representative and may not include all existing obstructions.

Northeast Alabama Regional Airport

Approach and Departure Paths—Runway 36

Administrative Code 450-9-1-.12(1)



MAINTENANCE: There were no obstructions in the ALDOT Approach/Departure Path of Runway 36. However, there is **one** tree that penetrates the FAA Part 77 Surface. **Please see Appendix #5.**

Note: Obstructions identified are representative and may not include all existing obstructions.

Northeast Alabama Regional Airport

Primary Surface

Administrative Code 450-9-1-.12(2)



MAINTENANCE: Primary Surface **MEETS** state licensing standards. There is ponding inside the Primary Surface west of Runway 36. Water is being retained and settling in areas where the ground is lower in elevation than the surrounding land. Please talk to your Airport Consultant about a possible project to improve the drainage in this area.

Northeast Alabama Regional Airport

Runway Safety Area



MAINTENANCE: Runway Safety Area **MEETS** state licensing standards. However, the edges of Runway 18/36 are severely cracked, generating large amounts of gravel and loose pavement. Please clear the Runway Safety Area of loose pavement fragments and gravel to mitigate the FOD hazard it presents.

Northeast Alabama Regional Airport

Airport Markings—RUNWAY 6/24

Administrative Code 450-9-1-.12(4)

Runway 6



Runway 24



MAINTENANCE: Runway 6/24 identifier and centerline markings are in **GOOD** condition. However, Runway 6/24 threshold markings are in **POOR** condition. Please clean or repaint threshold markings.

Northeast Alabama Regional Airport

Airport Markings—RUNWAY 18/36

Administrative Code 450-9-1-.12(4)

Runway 18



Runway 36



Side Stripe Markings

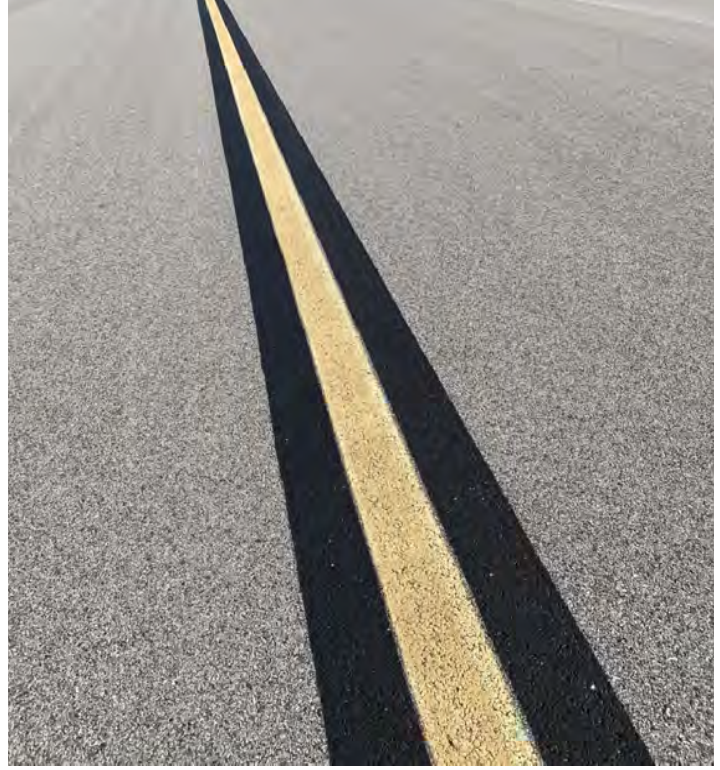


MAINTENANCE: Runway 18 identifier and threshold markings are in **POOR** condition. Runway 36 identifier and threshold markings are in **FAIR** condition. Runway 18/36 side stripe markings and centerline are in **FAIR** condition and slightly faded. Please clean faded markings or repaint markings if necessary.

Northeast Alabama Regional Airport

Airport Markings—Taxiway

Administrative Code 450-9-1-.12(4)



MAINTENANCE: Taxiway markings range from **POOR** condition to **GOOD** condition on the airfield. Please clean or repaint markings that are severely faded.

Northeast Alabama Regional Airport

Airport Markings—Apron

Administrative Code 450-9-1-.12(4)



MAINTENANCE: The apron markings are generally in **POOR** condition and are entirely faded in some areas. Please clean markings or repaint markings if necessary.

Northeast Alabama Regional Airport

Wind Direction Indicator

Administrative Code 450-9-1-.12(5)



MAINTENANCE: There are multiple wind direction indicators on the airfield. Most wind direction indicators are generally in **GOOD** condition, however one indicator (circled) is slightly faded and in **FAIR** condition and needs to be replaced soon.

Northeast Alabama Regional Airport

Airport Lighting

Administrative Code 450-9-1-.12(6)

An inspection of the lighting system had the following results:

Runway Lights	3 inoperable
Taxiway Lights	0 inoperable
Threshold Lights	1 inoperable
PAPI	0 inoperable
REIL	0 inoperable

MEETS State Licensing Standards for night-time operation.

Northeast Alabama Regional Airport

Runway, Taxiway and Apron Conditions—RUNWAY 6/24

Administrative Code 450-9-1-.12(7)



Runway 6/24 surface is in **GOOD** condition.

Northeast Alabama Regional Airport

Runway, Taxiway and Apron Conditions—RUNWAY 18/36

Administrative Code 450-9-1-.12(7)



MAINTENANCE: Runway 18/36 surface is in **FAIR** condition. Slight cracking exists on some areas of the pavement. Vegetation is growing inside some of these cracks. Please seal cracks and clear vegetation from pavement cracks.

Northeast Alabama Regional Airport

Runway, Taxiway and Apron Conditions—TAXIWAY

Administrative Code 450-9-1-.12(7)



Taxiway surfaces are in **GOOD** condition.

Northeast Alabama Regional Airport

Runway, Taxiway and Apron Conditions—APRON

Administrative Code 450-9-1-.12(7)



Apron surfaces are in **FAIR** condition. Apron surface is slightly cracked in some areas.

Northeast Alabama Regional Airport

Fueling Area Requirements

Administrative Code 450-9-1-.12(8)



The fueling area **MEETS** the requirements established by the Alabama Department of Transportation. However, the State of Alabama Department of Agriculture may have additional requirements for fueling systems that were not considered during this inspection.

Northeast Alabama Regional Airport

Prohibited Activities

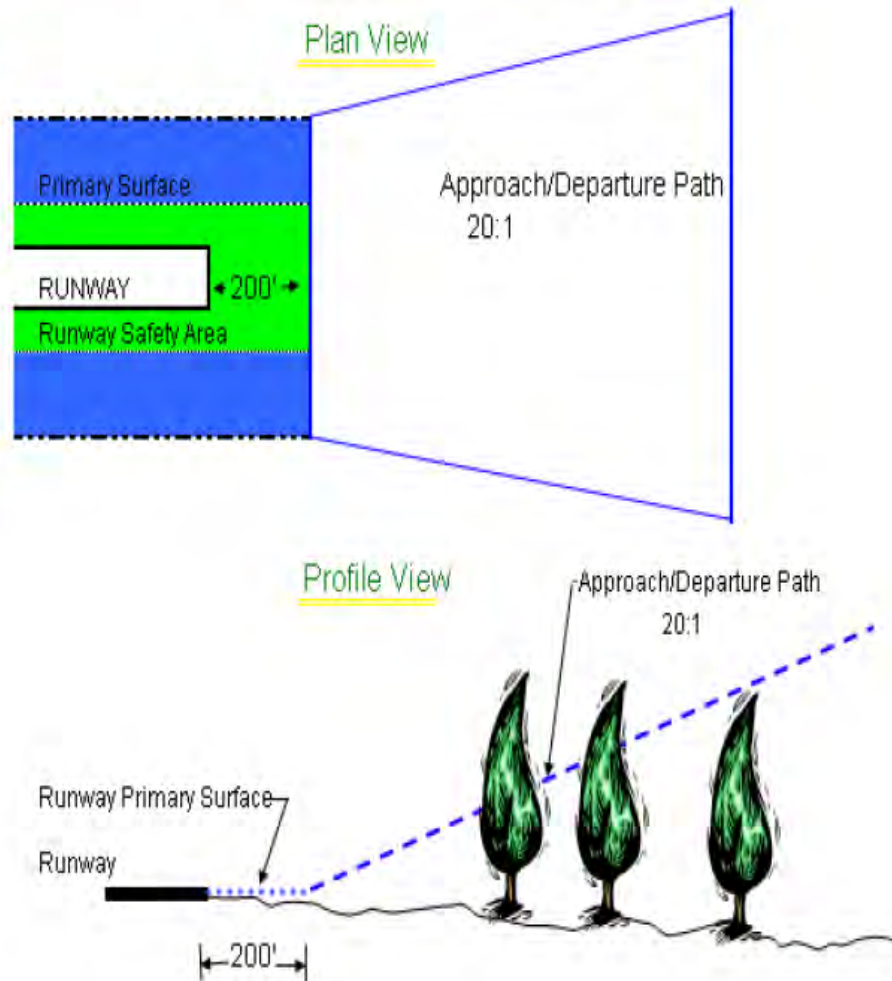
Administrative Code 450-9-1-.16



No prohibited activities were observed during this inspection. All gates were locked and airfield access was secure.

APPENDIX 1

Approach and Departure Path Dimensions			
Inner Width	Outer Width	Length	Acreage
250 Feet	450 Feet	1,000 Feet	8.04 Acres
Primary Surface Dimensions			
250 Feet Wide Centered Along Runway Centerline			
Extending 200 Feet Past the Runway End			
Runway Safety Area Dimensions			
120 Feet Wide Centered Along Runway Centerline			
Extending 200 Feet Past the Runway End			

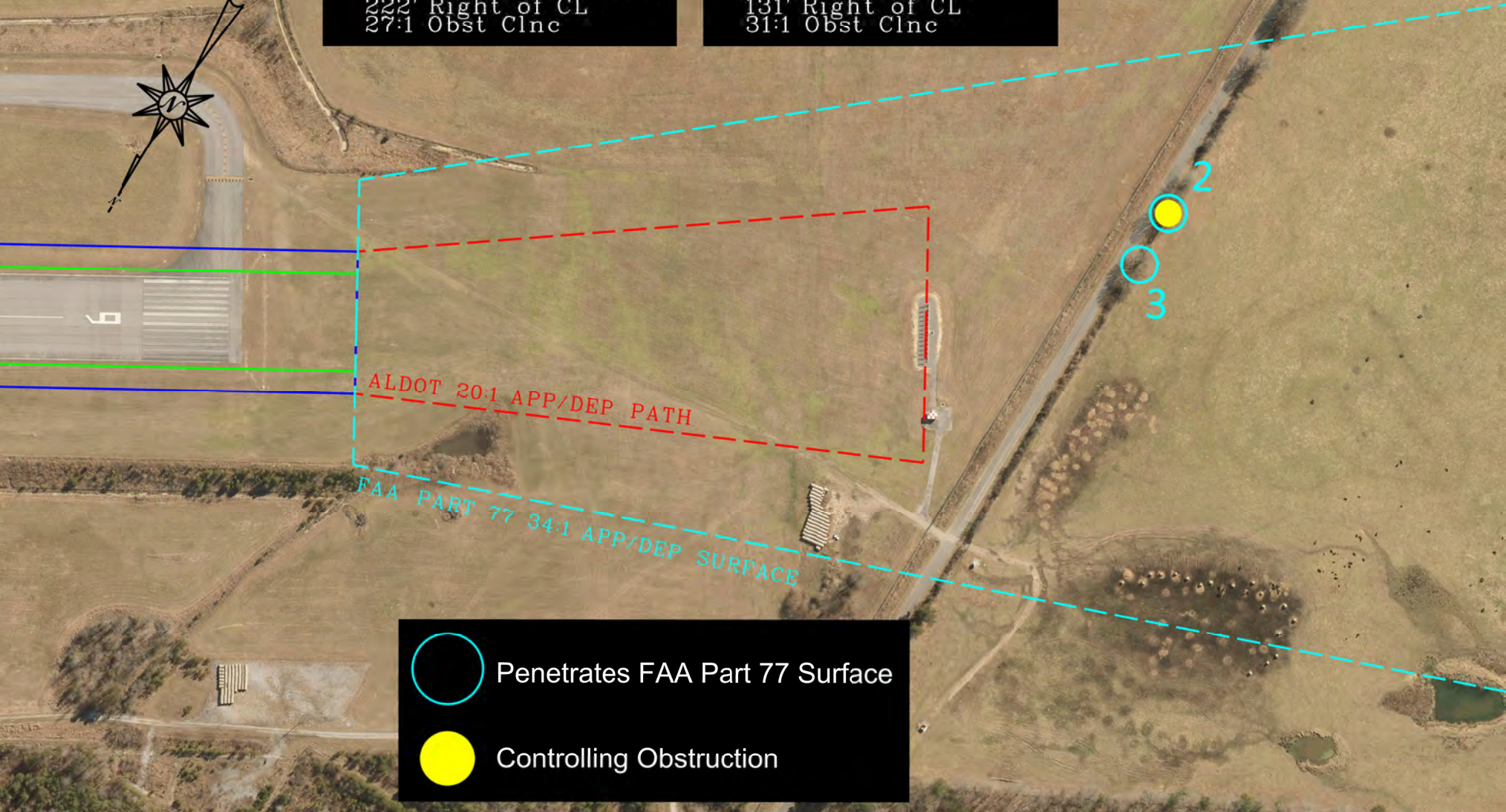




APPENDIX 2

Northeast Alabama Regional Airport
Gadsden, AL
February 7, 2024
Runway 6 Obstruction Evaluation

2. Tree 52' Abv RWY
1621' From RWY End
222' Right of CL
27:1 Obst Clnc

3. Tree 44' Abv RWY
1573' From RWY End
131' Right of CL
31:1 Obst Clnc



 Penetrates FAA Part 77 Surface
 Controlling Obstruction

APPENDIX 3

Northeast Alabama Regional Airport
Gadsden, AL

February 7, 2024

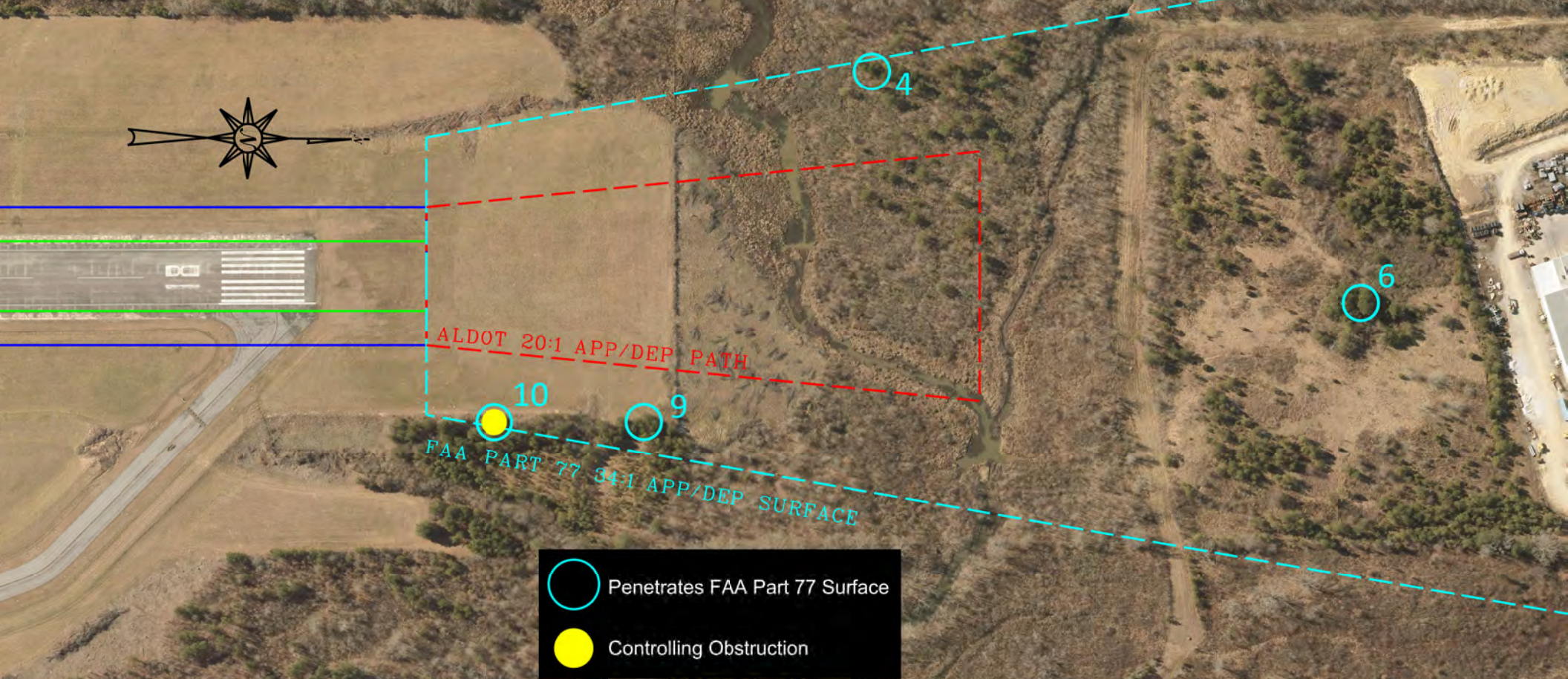
Runway 18 Obstruction Evaluation



4. Tree 32' Abv RWY
1005' From RWY End
369' Right of CL
25:1 Obst Clnc

6. Tree 52' Abv RWY
1887' From RWY End
48' Left of CL
32:1 Obst Clnc

9. Tree 27' Abv RWY
592' From RWY End
262' Left of CL
14:1 Obst Clnc

10. Tree 36' Abv RWY
322' From RWY End
262' Left of CL
3:1 Obst Clnc



-  Penetrates FAA Part 77 Surface
-  Controlling Obstruction

APPENDIX 4

Northeast Alabama Regional Airport
Gadsden, AL
February 7, 2024
Runway 24 Obstruction Evaluation

3. Tree 55' Abv RWY
2724' From RWY End
172' Right of CL
45:1 Obst Clnc





24

ALDOT 20:1 APP/DEP PATH

FAA PART 77 50:1 APP/DEP SURFACE



-  Penetrates FAA Part 77 Surface
-  Controlling Obstruction

APPENDIX 5



Northeast Alabama Regional Airport
Gadsden, AL
February 7, 2024
Runway 36 Obstruction Evaluation

2. Tree 68' Abv RWY
2097' From RWY End
323' Left of CL
27:1 Obst Clnc



ALDOT 20:1 APP/DEP PATH

FAA PART 77 34:1 APP/DEP SURFACE

-  Penetrates FAA Part 77 Surface
-  Controlling Obstruction

