



Kay Ivey
GOVERNOR

ALABAMA
DEPARTMENT OF TRANSPORTATION

AERONAUTICS BUREAU
1409 COLISEUM BOULEVARD
MONTGOMERY, ALABAMA 36110
PHONE (334) 242-6820
FAX (334) 353-6540
Internet: www.dot.state.al.us



John R. Cooper
TRANSPORTATION DIRECTOR

February 16, 2024

The Honorable Dexter McLendon
Mayor, City of Greenville
119 East Commerce Street
Greenville, Alabama 36037

Subject: Annual Inspection Report
Mac Crenshaw Memorial Airport

Dear Mayor McLendon:

An inspection of the Mac Crenshaw Memorial Airport was conducted by personnel of the Alabama Department of Transportation, Aeronautics Bureau on February 15, 2024. The purpose of the inspection was to update the information currently on file regarding the airport and to ascertain compliance with the rules and regulations of the Alabama Department of Transportation governing licensed public-use airports within the State of Alabama.

Attached you will find a copy of the Annual Inspection Report for the airport. As noted in the report, the airport **does not meet** all requirements for the issuance of an operating license. Once the trees have been cut, please contact this office to schedule a re-inspection. Failure to correct the violations noted in the attached report within 360 days could result in the revocation of the airport's operating license.

If you should have any questions concerning the inspection or corrective actions, please do not hesitate to contact Mr. Caleb Nall with the Aeronautics Bureau at (334) 312-6748.

Sincerely,

Frank Farmer
Chief, Aeronautics Bureau

Copy: Mr. Rans Black, FAA/ADO
Mr. Derrik Owens, FAA/ADO
Mr. Bruce Edwards, Airport Manager
Ms. Michelle Conway, GMC

February 15, 2024



ANNUAL INSPECTION REPORT



**MAC CRENSHAW MEMORIAL AIRPORT
GREENVILLE, ALABAMA**

Alabama Department of Transportation Aeronautics Bureau—Annual Airport Inspection Report

In accordance with the provisions of the Code of Alabama 23-1-357, an inspection of the **Mac Crenshaw Memorial Airport** was conducted by **Mr. Caleb Nall** with the Alabama Department of Transportation Aeronautics Bureau on **February 15, 2024**

The inspection was conducted on the airport under the provisions of the Administrative Code Chapter 450-9-1 for the following areas:

Aeronautics Administrative Code	Inspection Results	Corrective Action	Notes
Approach & Departure Paths Administrative Code 450-9-1-.12 (1)	<i>Violation</i>	Remove all obstructions within the ALDOT Approach/Departure Path.	Trees were observed in the ALDOT Approach/Departure Path.
Primary Surface Administrative Code 450-9-1-.12 (2)	<i>In Compliance</i> <i>Maintenance</i>	Ensure light base does not exceed more than 3 inches in height	REIL light base exceeded more than 3 inches.
Runway Safety Area Administrative Code 450-9-1-.12 (3)	<i>In Compliance</i>	N/A	N/A
Airport Markings Administrative Code 450-9-1-.12 (4)	<i>In Compliance</i>	N/A	N/A
Wind Direction Indicator Administrative Code 450-9-1-.12 (5)	<i>In Compliance</i>	N/A	N/A
Airport Lighting Administrative Code 450-9-1-.12 (6)	<i>In Compliance</i>	N/A	N/A
Runway, Taxiway and Apron Conditions Administrative Code 450-9-1-.12 (7)	<i>In Compliance</i>	N/A	N/A
Fueling Area Requirements Administrative Code 450-9-1-.12 (8)	<i>In Compliance</i>	N/A	N/A
Prohibited Activities Administrative Code 450-9-1-.16	<i>In Compliance</i>	N/A	No evidence of prohibited activities were found.
Additional Items	<i>In Compliance</i>	N/A	N/A

License Status—**PROBATIONARY**: Violations should be corrected within 360 days.

The corrective actions that may be prescribed in this inspection report do not relieve the airport sponsor from compliance with any other Federal, State or local laws, ordinances or regulations that may be applicable. It is the responsibility of the airport sponsor to be aware of and obey all Federal, State or local laws, ordinances or regulations that may have a bearing on the corrective actions that may be specified in this report.

Code of Alabama 23-1-357(a)... a person or municipality may not operate an airport, restricted landing area, or other navigation facility without a license issued by this Department.

Mac Crenshaw Memorial Airport

Approach and Departure Paths—RUNWAY 14

Administrative Code 450-9-1-.12(1)



An obstruction was located in the ALDOT Approach/Departure Path of Runway 14. Please see Appendix #2 for more information.

Note: Obstructions identified are representative and may not include all existing obstructions.

Mac Crenshaw Memorial Airport

Approach and Departure Paths—RUNWAY 32

Administrative Code 450-9-1-.12(1)



There were no obstructions in the ALDOT Approach/Departure Path of Runway 32. Please see Appendix #3 for more information.

Mac Crenshaw Memorial Airport

Primary Surface

Administrative Code 450-9-1-.12(2)



Primary Surface **MEETS** state licensing standards.

Maintenance: Ensure REIL light base does not exceed more than 3 inches in height.

Mac Crenshaw Memorial Airport

Runway Safety Area

Administrative Code 450-9-1-.12(3)



Runway Safety Area **MEETS** state licensing standards.

Mac Crenshaw Memorial Airport

Airport Markings—Runway

Administrative Code 450-9-1-.12(4)



Runway markings are in **FAIR** condition.

Mac Crenshaw Memorial Airport

Airport Markings—Taxiway

Administrative Code 450-9-1-.12(4)



Taxiway markings are in **GOOD** condition.

Mac Crenshaw Memorial Airport

Airport Markings—Apron

Administrative Code 450-9-1-.12(4)



Apron markings are in **GOOD** condition.

Mac Crenshaw Memorial Airport

Wind Direction Indicator

Administrative Code 450-9-1-.12(5)



Wind direction indicator is in **GOOD** condition.

Mac Crenshaw Memorial Airport

Airport Lighting

Administrative Code 450-9-1-.12(6)

An inspection of the lighting system had the following results:

Runway Lights	3 inoperable
Taxiway Lights	5 inoperable
Threshold Lights	3 inoperable
PAPI	N/A
REIL	0 inoperable

MEETS State Licensing Standards for night-time operation.

Mac Crenshaw Memorial Airport

Runway, Taxiway and Apron Conditions—RUNWAY

Administrative Code 450-9-1-.12(7)



Runway surface is in **GOOD** condition.

Mac Crenshaw Memorial Airport

Runway, Taxiway and Apron Conditions—TAXIWAY

Administrative Code 450-9-1-.12(7)



Taxiway surface is in **GOOD** condition.

Mac Crenshaw Memorial Airport

Runway, Taxiway and Apron Conditions—APRON

Administrative Code 450-9-1-.12(7)



Apron surface is in **FAIR** condition.

Mac Crenshaw Memorial Airport

Fueling Area Requirements

Administrative Code 450-9-1-.12(8)



Fueling area MEETS state licensing standards. However, the State of Alabama Department of Agriculture may have additional requirements for fueling systems that were not considered during this inspection.

Mac Crenshaw Memorial Airport

Prohibited Activities

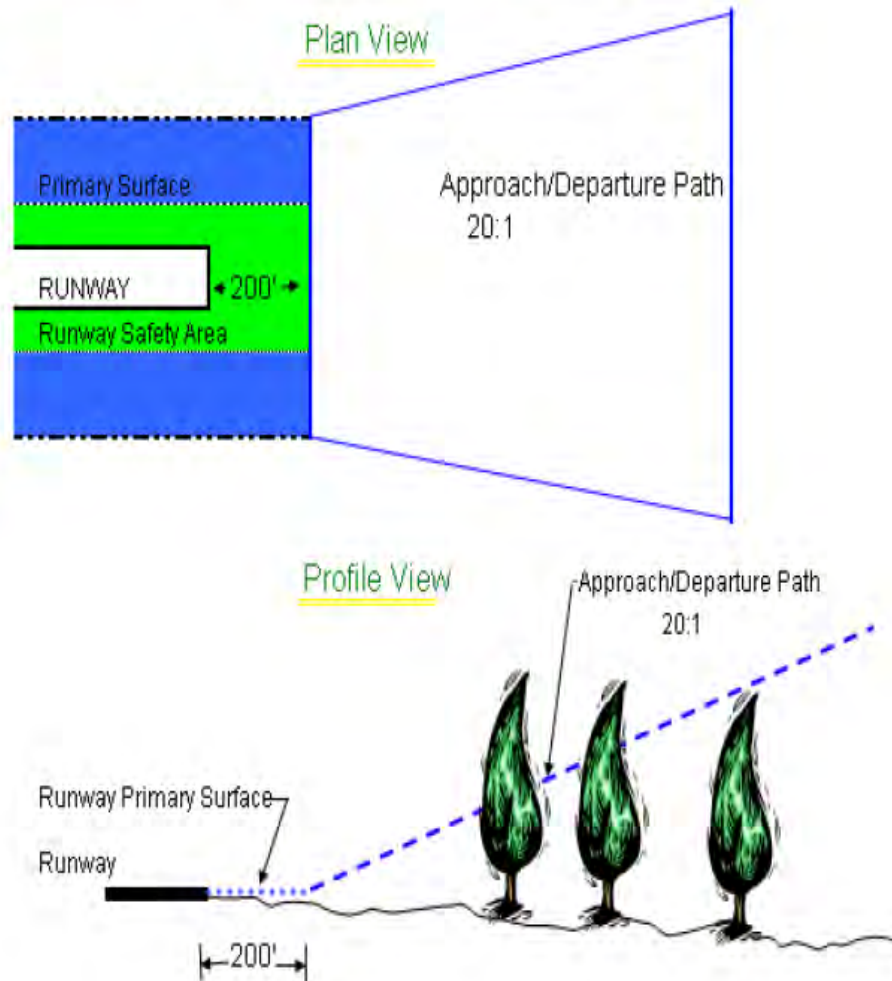
Administrative Code 450-9-1-.16



No prohibited activities were observed during this inspection.

APPENDIX 1

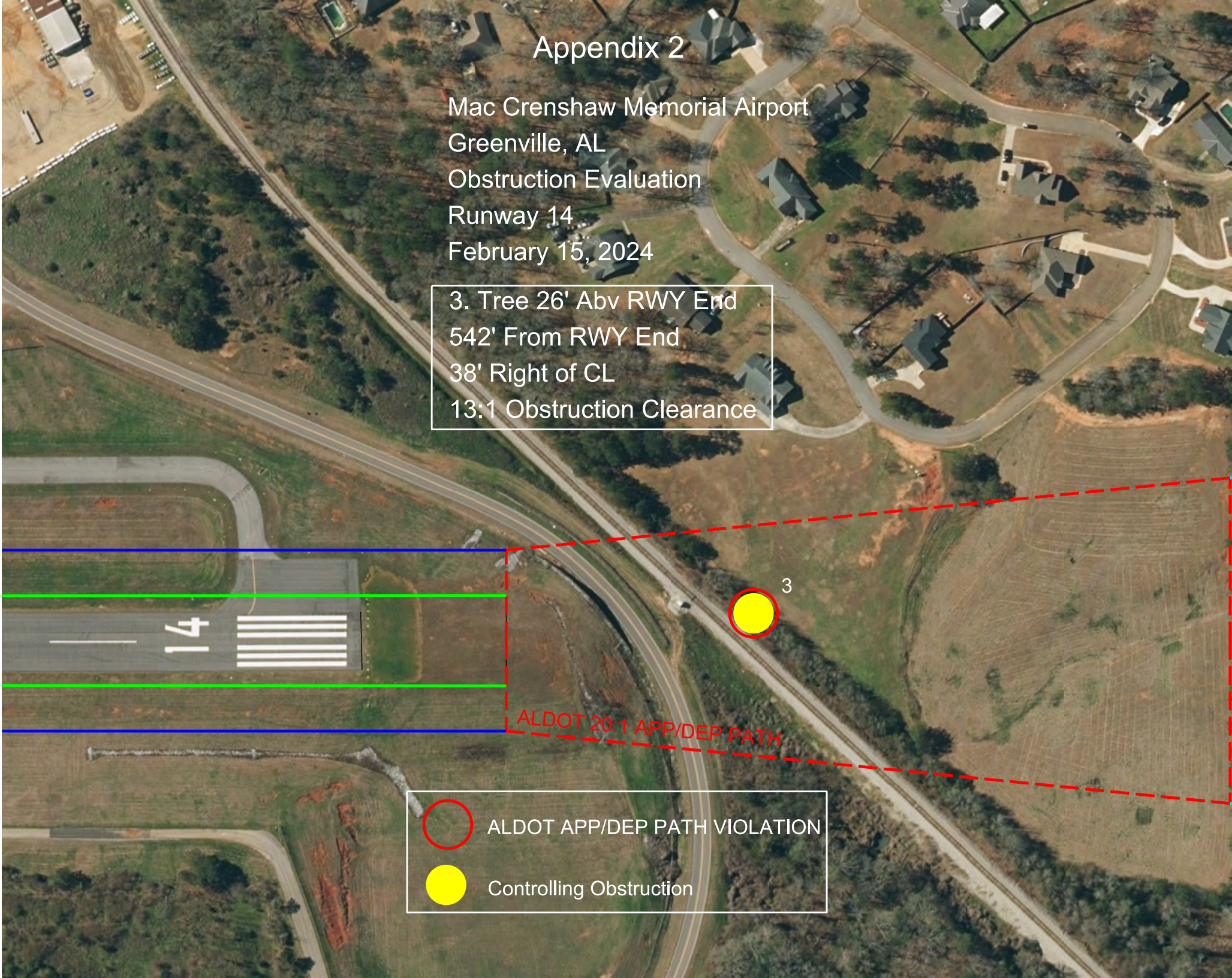
Approach and Departure Path Dimensions			
Inner Width	Outer Width	Length	Acreage
250 Feet	450 Feet	1,000 Feet	8.04 Acres
Primary Surface Dimensions			
250 Feet Wide Centered Along Runway Centerline			
Extending 200 Feet Past the Runway End			
Runway Safety Area Dimensions			
120 Feet Wide Centered Along Runway Centerline			
Extending 200 Feet Past the Runway End			



Appendix 2

Mac Crenshaw Memorial Airport
Greenville, AL
Obstruction Evaluation
Runway 14
February 15, 2024

3. Tree 26' Abv RWY End
542' From RWY End
38' Right of CL
13:1 Obstruction Clearance



-  ALDOT APP/DEP PATH VIOLATION
-  Controlling Obstruction

Appendix 3

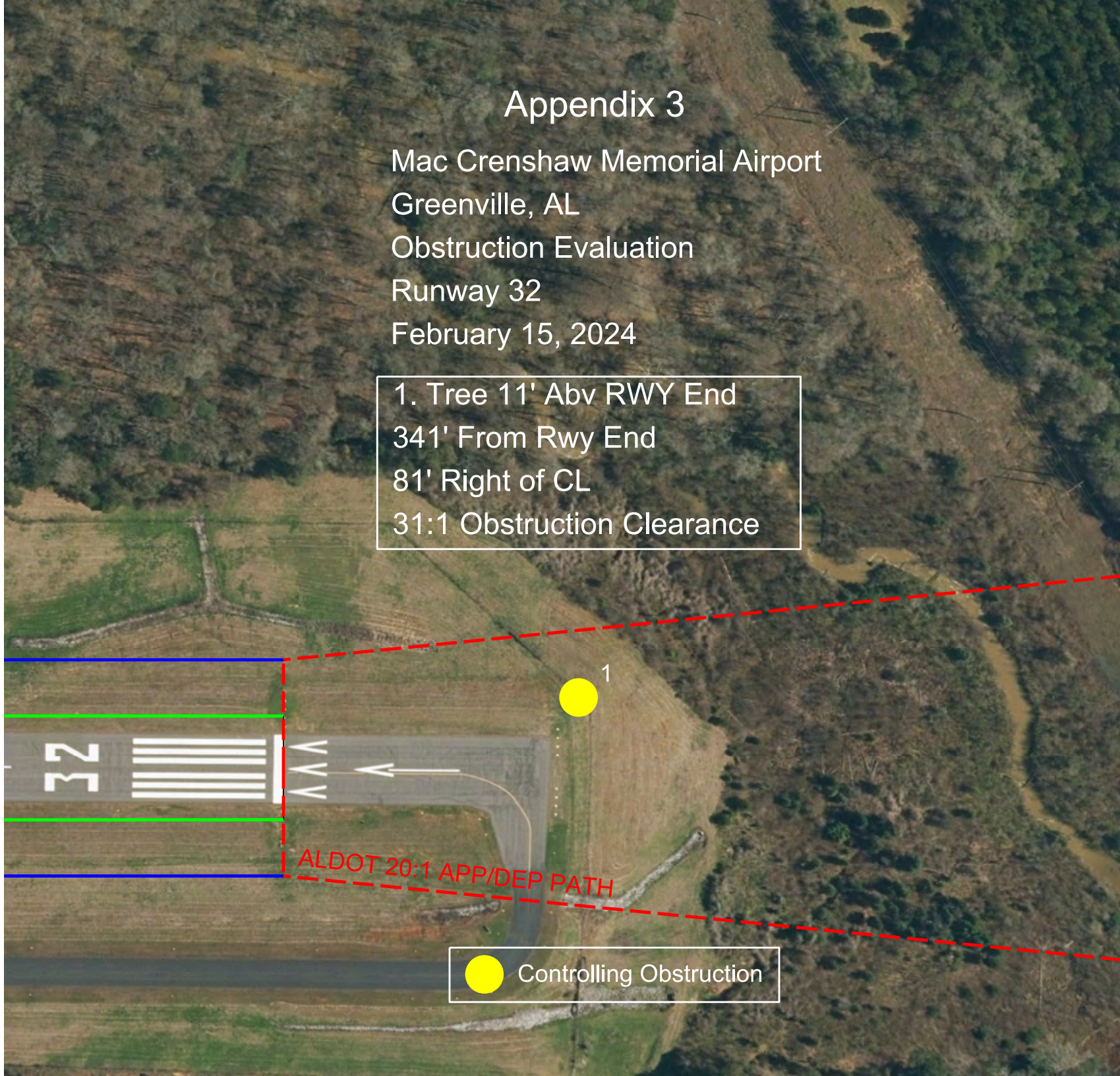
Mac Crenshaw Memorial Airport
Greenville, AL

Obstruction Evaluation

Runway 32

February 15, 2024

1. Tree 11' Abv RWY End
341' From Rwy End
81' Right of CL
31:1 Obstruction Clearance



Controlling Obstruction