



Kay Ivey
GOVERNOR

ALABAMA
DEPARTMENT OF TRANSPORTATION

AERONAUTICS BUREAU
1409 COLISEUM BOULEVARD
MONTGOMERY, ALABAMA 36110
PHONE (334) 242-6820
FAX (334) 353-6540
Internet: www.dot.state.al.us



John R. Cooper
TRANSPORTATION DIRECTOR

May 4, 2023

The Honorable Leigh Dollar, Mayor
City of Guntersville
405 Buck Island Road
Guntersville, Alabama 35976

Subject: Annual Inspection Report
Guntersville Municipal Airport

Dear Mayor Dollar:

An inspection of the Guntersville Municipal Airport was conducted by personnel of the Alabama Department of Transportation Aeronautics Bureau on April 21, 2023. The purpose of the inspection was to update the information currently on file regarding the airport and to ascertain compliance with the rules and regulations of the Alabama Department of Transportation governing licensed public-use airports within the State of Alabama.

Attached you will find a copy of the Annual Inspection Report. As noted in the report, the airport ***does not meet*** the requirements for the issuance of an operating license. Once the trees have been removed and the violations have been addressed, please contact this office to schedule a re-inspection.

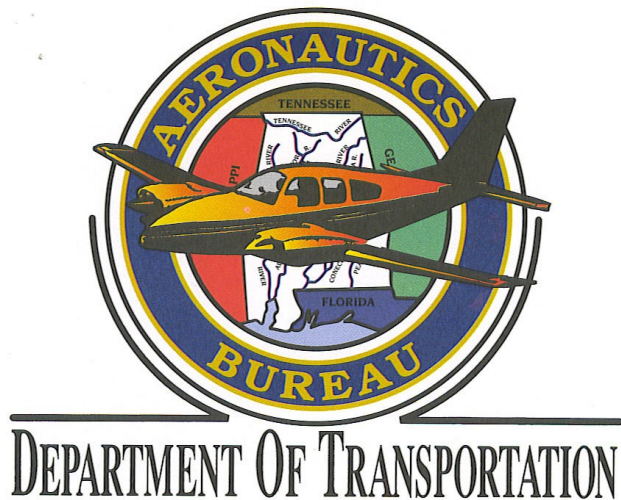
If you should have any questions concerning the inspection or corrective actions, please do not hesitate to contact Mr. Bennett Head with the Aeronautics Bureau at (334) 242-6831.

Sincerely,

Frank Farmer
Chief, Aeronautics Bureau

Copy: Mr. Rans Black, FAA/ADO
Mr. Lorn Whittaker, FAA/ADO
Mr. Jeffrey A. Redmill, Barge Design Solutions, Inc.
Mr. Gary McIlquham, Airport Manager

April 21, 2023



ANNUAL INSPECTION REPORT



**GUNTERSVILLE MUNICIPAL AIRPORT
GUNTERSVILLE, ALABAMA**

Alabama Department of Transportation Aeronautics Bureau—Annual Airport Inspection Report

In accordance with the provisions of the Code of Alabama 23-1-357, an inspection of the **Guntersville Municipal Airport** was conducted by **Mr. Jason Hare, and Mr. Bennett Head** with the Alabama Department of Transportation Aeronautics Bureau on **April 21, 2023**.

The inspection was conducted on the airport under the provisions of the Administrative Code Chapter 450-9-1 for the following areas:

Aeronautics Administrative Code	Inspection Results	Corrective Action	Notes
Approach & Departure Paths Administrative Code 450-9-1-.12 (1)	<i>VIOLATION</i>	Remove trees that have been noted in the ALDOT Approach/Departure Path.	Two trees off Runway 25 penetrate the ALDOT Approach/Departure Path. There are FAA Part 77 penetrations on both RWY ends as well.
Primary Surface Administrative Code 450-9-1-.12 (2)	<i>VIOLATION</i>	Remove trees and brush that are inside Primary Surface.	The primary surface extends from either side of the centerline for 125 feet. Brush and small trees were found 100 feet from the centerline in the primary surface.
Runway Safety Area Administrative Code 450-9-1-.12 (3)	<i>VIOLATION</i>	Fill in hole in Runway Safety area off of Runway 25 end. Fill in hole at the base of the threshold light on Runway 7.	A hole was found in the RSA off the end of RWY 25. The base of one threshold light off RWY 7 exceeds 3 inches. Fill in hole to ensure the base meets standards.
Airport Markings Administrative Code 450-9-1-.12 (4)	<i>In Compliance</i> <i>Maintenance</i>	Consult with engineer on next rehab project to remark in accordance with FAA AC 150/5340-1M	Taxiway and Apron markings are in poor condition.
Wind Direction Indicator Administrative Code 450-9-1-.12 (5)	<i>In Compliance</i>	N/A	N/A
Airport Lighting Administrative Code 450-9-1-.12 (6)	<i>In Compliance</i> <i>Maintenance</i>	Remove any ant beds around airport lighting, to prevent them from filling light with dirt.	Several taxiway lights had a base exposing more than 3 inches, and ant beds built around them.
Runway, Taxiway and Apron Conditions Administrative Code 450-9-1-.12 (7)	<i>In Compliance</i>	N/A	The Runway is in Good condition. The Taxiway and Apron are in Fair condition.
Fueling Area Requirements Administrative Code 450-9-1-.12 (8)	<i>In Compliance</i>	N/A	N/A
Prohibited Activities Administrative Code 450-9-1-.16	<i>In Compliance</i>	N/A	N/A
Additional Items	<i>In Compliance</i>	N/A	N/A

*License Status—**SUSPENDED***

The corrective actions that may be prescribed in this inspection report do not relieve the airport sponsor from compliance with any other Federal, State or local laws, ordinances or regulations that may be applicable. It is the responsibility of the airport sponsor to be aware of and obey all Federal, State or local laws, ordinances or regulations that may have a bearing on the corrective actions that may be specified in this report.

Code of Alabama 23-1-357(a)... a person or municipality may not operate an airport, restricted landing area, or other navigation facility without a license issued by this Department.

Guntersville Municipal Airport

Approach and Departure Paths—RUNWAY 7

Administrative Code 450-9-1-.12(1)



No obstructions located in the ALDOT Approach/Departure Path of Runway 7. However, there are several trees that violate the FAA Part 77 Surface. Please see Appendix #2 for more information.

Guntersville Municipal Airport

Approach and Departure Paths—RUNWAY 25

Administrative Code 450-9-1-.12(1)



VIOLATION: There are two obstructions that penetrate the ALDOT Approach/Departure Path of Runway 25. Additionally, there are two obstructions that penetrate the FAA Part 77 Surface. Please see Appendix #3 for more information.

Note: Obstructions identified are representative and may not include all existing obstructions.

Guntersville Municipal Airport

Primary Surface

Administrative Code 450-9-1-.12(2)



VIOLATION: Primary Surface **does not** meet state licensing standards. A tree and brush were measured 100 feet from centerline, Primary surface shall be clear of any brush or trees to a distance of 125 feet from the centerline.

Guntersville Municipal Airport

Primary Surface

Administrative Code 450-9-1-.12(2)



Maintenance: Fill in ruts that were found in the primary surface. This could cause damage, or loss of directional control if an aircraft were to exit the runway.

April 21, 2023

Guntersville Municipal Airport

Runway Safety Area

Administrative Code 450-9-1-.12(3)



VIOLATION: The Runway Safety Area **does not** meet state licensing standards. The hole should be filled to avoid causing damage to an aircraft or loss of directional control.

Guntersville Municipal Airport

Runway Safety Area

Administrative Code 450-9-1-.12(3)



VIOLATION: Runway Safety Area **does not** meet state licensing standards. The base of a threshold light on runway 7 exceeds 3 inches above the ground. Any items in the Runway Safety Area shall not exceed 3 inches above the ground unless it is frangible.

Guntersville Municipal Airport

Airport Markings—Runway

Administrative Code 450-9-1-.12(4)



Runway markings are in **GOOD** condition.

Guntersville Municipal Airport

Airport Markings—Taxiway

Administrative Code 450-9-1-.12(4)



Taxiway markings are in **POOR** condition.

Guntersville Municipal Airport

Airport Markings—Taxiway

Administrative Code 450-9-1-.12(4)



Runway Identification signs are in **FAIR** condition. These signs are noted as fair due to fading.

Guntersville Municipal Airport

Airport Markings—Apron

Administrative Code 450-9-1-.12(4)



Apron markings are in **POOR** condition.

Guntersville Municipal Airport

Wind Direction Indicator

Administrative Code 450-9-1-.12(5)



Wind direction indicator is in **GOOD** condition.

Guntersville Municipal Airport

Airport Lighting

Administrative Code 450-9-1-.12(6)

An inspection of the lighting system had the following results:

Runway Lights	4 inoperable
Taxiway Lights	0 inoperable
Threshold Lights	2 inoperable
PAPI	0 inoperable
REIL	Out

MEETS State Licensing Standards for night-time operation.

Guntersville Municipal Airport

Runway, Taxiway and Apron Conditions—RUNWAY

Administrative Code 450-9-1-.12(7)



Runway surface is in **GOOD** condition.

Guntersville Municipal Airport

Runway, Taxiway and Apron Conditions—TAXIWAY

Administrative Code 450-9-1-.12(7)



Taxiway surface is in **FAIR** condition.

Guntersville Municipal Airport

Runway, Taxiway and Apron Conditions—APRON

Administrative Code 450-9-1-.12(7)



Apron surface is in **FAIR** condition.

Guntersville Municipal Airport

Fueling Area Requirements

Administrative Code 450-9-1-.12(8)



The fueling area meets the requirements established by the Alabama Department of Transportation. However, the State of Alabama Department of Agriculture may have additional requirements for fueling systems that were not considered during this inspection.

Guntersville Municipal Airport

Prohibited Activities

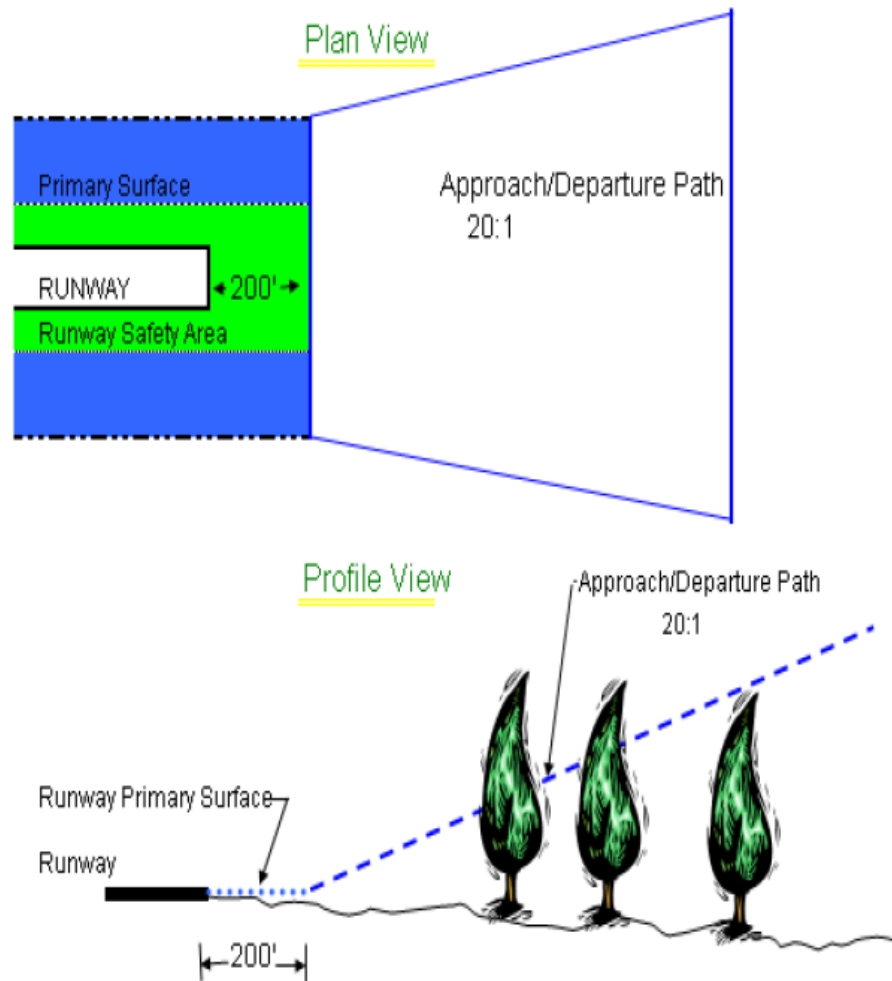
Administrative Code 450-9-1-.16



No prohibited activities were observed during this inspection.

APPENDIX 1

Approach and Departure Path Dimensions			
Inner Width	Outer Width	Length	Acreage
250 Feet	450 Feet	1,000 Feet	8.04 Acres
Primary Surface Dimensions			
250 Feet Wide Centered Along Runway Centerline			
Extending 200 Feet Past the Runway End			
Runway Safety Area Dimensions			
120 Feet Wide Centered Along Runway Centerline			
Extending 200 Feet Past the Runway End			



APPENDIX #2

GUNTERSVILLE MUNICIPAL AIRPORT GUNTERSVILLE, AL APRIL 21, 2023 RUNWAY 7 OBSTRUCTION EVALUATION

1. Tree 45' Abv. RWY
604' From RWY End
297' Right of CL
10:1 Obst. Clrnc

3. Tree 25' Abv. RWY
810' From RWY End
256' Right of CL
24:1 Obst. Clrnc

4. Pole 19' Abv. RWY
842' From RWY End
47' Right of CL
33:1 Obst. Clrnc



5. Tree 9' Abv. RWY
444' From RWY End
68' Left of CL
33:1 Obst. Clrnc

6. Tree 16' Abv. RWY
685' From RWY End
296' Left of CL
30:1 Obst. Clrnc

7. Pole 19' Abv. RWY
659' From RWY End
310' Left of CL
24:1 Obst. Clrnc

ALDOT APP/DEP PATH

FAA PART 77 34:1 SURFACE

-  Penetrates FAA Part 77 Surface but NOT an ALDOT violation.
-  Controlling Obstruction

APPENDIX #3

GUNTERSVILLE MUNICIPAL AIRPORT
GUNTERSVILLE, AL
April 21, 2023
RUNWAY 25 Obstruction Evaluation

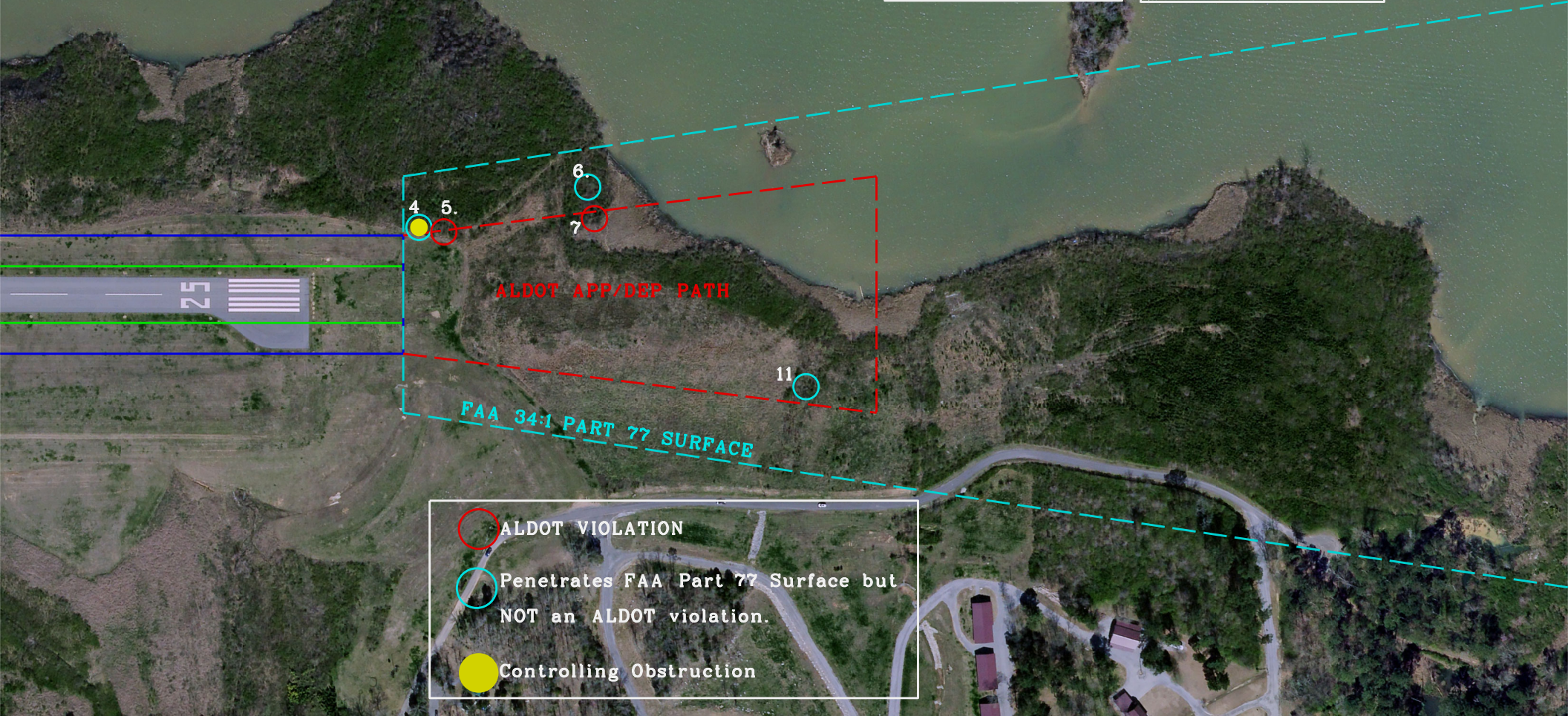
4. Tree 19' Abv. RWY
233' From RWY End
142' Right of CL
1:1 Obst. Clrnc




5. Tree 15' Abv. RWY
286' From RWY End
133' Right of CL
5:1 Obst. Clrnc

6. Tree 25' Abv. RWY
590' From RWY End
227' Right of CL
15:1 Obst. Clrnc

7. Tree 22' Abv. RWY
604' From RWY End
161' Right of CL
18:1 Obst. Clrnc

11. Tree 28' Abv. RWY
1051' From RWY End
195' Left of CL
30:1 Obst. Clrnc



-  ALDOT VIOLATION
-  Penetrates FAA Part 77 Surface but NOT an ALDOT violation.
-  Controlling Obstruction