



Kay Ivey  
GOVERNOR

**ALABAMA**  
**DEPARTMENT OF TRANSPORTATION**

**AERONAUTICS BUREAU**  
**1409 COLISEUM BOULEVARD**  
**MONTGOMERY, ALABAMA 36110**

PHONE (334) 242-6820

FAX (334) 353-6540

Internet: [www.dot.state.al.us](http://www.dot.state.al.us)



John R. Cooper  
TRANSPORTATION DIRECTOR

April 7, 2023

The Honorable Jamie Heard  
Mayor of Lanett  
P.O. Box 290  
Lanett, Alabama 36863

**Subject: Airport Re-Inspection Report**  
**Lanett Municipal Airport**

Dear Mayor Heard:

On April 6, 2023, personnel from the Alabama Department of Transportation, Aeronautics Bureau re-inspected the Lanett Municipal Airport. The purpose of the re-inspection was to ascertain actions taken to correct the safety deficiencies noted in the November 9, 2022 inspection report.

A review of the obstruction analysis has concluded that the noted obstructions to the required ALDOT 20:1 Approach/Departure Paths to the approach end of Runway 24 have been removed. As a result, the airport now **meets** the requirements for an operating license. The operating license for the airport is **re-issued** and is in full effect. A signed license certificate will be mailed separately within a few weeks.

The Alabama Department of Transportation wishes to thank you for helping to provide a safe and efficient airport system. If you should have any questions concerning the re-inspection or corrective actions, please do not hesitate to contact Mr. Bennett Head with the Aeronautics Bureau at (334) 242-6831.

Sincerely,

Frank Farmer  
Chief, Aeronautics Bureau

Copy: Mr. Richard Carter, Airport Manager  
Mr. Rans Black, FAA/ADO  
Mr. Luke Flowers, FAA/ADO  
Mr. Ryan Pearce, GMC



Kay Ivey  
GOVERNOR

**ALABAMA**  
**DEPARTMENT OF TRANSPORTATION**

**AERONAUTICS BUREAU**  
**1409 COLISEUM BOULEVARD**  
**MONTGOMERY, ALABAMA 36110**

PHONE (334) 242-6820  
FAX (334) 353-6540  
Internet: [www.dot.state.al.us](http://www.dot.state.al.us)



John R. Cooper  
TRANSPORTATION DIRECTOR

January 19, 2023

The Honorable Jamie Heard  
Mayor, City of Lanett  
P.O. Box 290  
Lanett, Alabama 36863

**Subject: Annual Inspection Report**  
**Lanett Municipal Airport**

Dear Mayor Heard:

An inspection of the Lanett Municipal Airport was conducted by personnel of the Alabama Department of Transportation Aeronautics Bureau on November 9, 2022. The purpose of the inspection was to update the information currently on file regarding the airport and to ascertain compliance with the rules and regulations of the Alabama Department of Transportation governing licensed public-use airports within the State of Alabama.

Attached you will find a copy of the Annual Inspection Report. As noted in the report, the airport ***Does Not Meet*** the requirements for the issuance of an operating license. Please address the violation listed and contact this office to schedule a re-inspection.

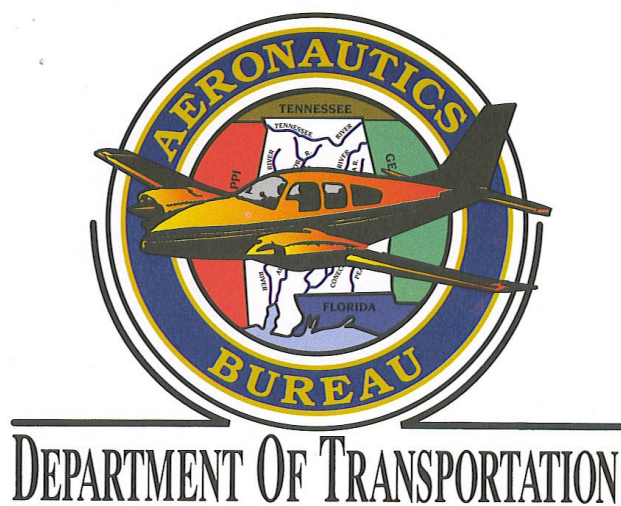
If you should have any questions concerning the inspection or corrective actions, please do not hesitate to contact Mr. Jason Hare with the Aeronautics Bureau at (334) 353-6223.

Sincerely,

Frank Farmer  
Chief, Aeronautics Bureau

Copy: Mr. Rans Black, FAA/ADO  
Mr. Luke Flowers, FAA/ADO  
Mr. Ryan Pearce, GMC  
Mr. Richard Carter, Airport Manager

**November 9, 2022**



**Lanett Municipal Airport**  
**Lanett, Alabama**

Alabama Department of Transportation Aeronautics Bureau—Annual Airport Inspection Report

In accordance with the provisions of the Code of Alabama 23-1-357, an inspection of the **Lanett Municipal Airport** was conducted by **Mr. Jason Hare** and **Mr. Bennett Head** with the Alabama Department of Transportation Aeronautics Bureau on **November 9, 2022**.

The inspection was conducted on the airport under the provisions of the Administrative Code Chapter 450-9-1 for the following areas:

Aeronautics Administrative Code	Inspection Results	Corrective Action	Notes
<b>Approach &amp; Departure Paths</b> Administrative Code 450-9-1-.12 (1)	<i>Violation</i>	Remove tree from approach/departure path on RWY 24	N/A
<b>Primary Surface</b> Administrative Code 450-9-1-.12 (2)	<i>In Compliance</i>	N/A	N/A
<b>Runway Safety Area</b> Administrative Code 450-9-1-.12 (3)	<i>In Compliance</i>	N/A	N/A
<b>Airport Markings</b> Administrative Code 450-9-1-.12 (4)	<i>In Compliance</i>	N/A	N/A
<b>Wind Direction Indicator</b> Administrative Code 450-9-1-.12 (5)	<i>In Compliance</i>	N/A	Wind Direction Indicator was in the process of being installed during inspection.
<b>Airport Lighting</b> Administrative Code 450-9-1-.12 (6)	<i>In Compliance</i>	N/A	N/A
<b>Runway, Taxiway and Apron Conditions</b> Administrative Code 450-9-1-.12 (7)	<i>In Compliance</i>	N/A	N/A
<b>Fueling Area Requirements</b> Administrative Code 450-9-1-.12 (8)	<i>In Compliance</i>	N/A	N/A
<b>Prohibited Activities</b> Administrative Code 450-9-1-.16	<i>In Compliance</i>	N/A	N/A

*License Status—***SUSPENDED**

The corrective actions that may be prescribed in this inspection report do not relieve the airport sponsor from compliance with any other Federal, State or local laws, ordinances or regulations that may be applicable. It is the responsibility of the airport sponsor to be aware of and obey all Federal, State or local laws, ordinances or regulations that may have a bearing on the corrective actions that may be specified in this report.

**Code of Alabama 23-1-357(a)**... a person or municipality may not operate an airport, restricted landing area, or other navigation facility without a license issued by this Department.

## Lanett Municipal Airport

### Approach and Departure Paths—RUNWAY 24

Administrative Code 450-9-1-.12(1)



Obstruction identified as Tree #1 violates the ALDOT 20:1 Approach/Departure Path. See runway obstruction evaluation for more information. (Appendix 2)

# Lanett Municipal Airport

## Approach and Departure Paths—RUNWAY 6

Administrative Code 450-9-1-.12(1)



There are no obstructions in the ALDOT 20:1 Approach/ Departure path. Please see runway obstruction evaluation for more information. (Appendix 3)

# Lanett Municipal Airport

## Primary Surface

Administrative Code 450-9-1-.12(2)



**Meets** State Licensing Standards.

# Lanett Municipal Airport

## Runway Safety Area

Administrative Code 450-9-1-.12(3)



**Meets** State Licensing Standards.



# Lanett Municipal Airport

## Airport Markings

Administrative Code 450-9-1-.12(4)



Runway markings are in **GOOD** condition.

# Lanett Municipal Airport

## Wind Direction Indicator

Administrative Code 450-9-1-.12(5)



Wind direction indicator is in **GOOD** condition. Wind Direction Indicator was in the process of being installed at the time of inspection.

## Lanett Municipal Airport

### Airport Lighting

Administrative Code 450-9-1-.12(6)

An inspection of the lighting system had the following results:

<b>Runway Lights</b>	0 inoperable
<b>Taxiway Lights</b>	0 fixture broken
<b>Threshold Lights</b>	0 inoperable
<b>PAPI</b>	0 inoperable
<b>REIL</b>	0 fixtures broken

**Meets** State Licensing Standards for night-time operation.

## Lanett Municipal Airport

### Runway, Taxiway and Apron Conditions—RUNWAY

Administrative Code 450-9-1-.12(7)



Runway surface is in **GOOD** condition.

## Lanett Municipal Airport

### Runway, Taxiway and Apron Conditions—TAXIWAY

Administrative Code 450-9-1-.12(7)



Taxiway surface is in **GOOD** condition.

## Lanett Municipal Airport

### Runway, Taxiway and Apron Conditions—APRON

Administrative Code 450-9-1-.12(7)



Apron surface is in **GOOD** condition.

# Lanett Municipal Airport

## Fueling Area Requirements

Administrative Code 450-9-1-.12(8)



**Meets** State Licensing Standards.

## Lanett Municipal Airport

### Prohibited Activities

Administrative Code 450-9-1-.16

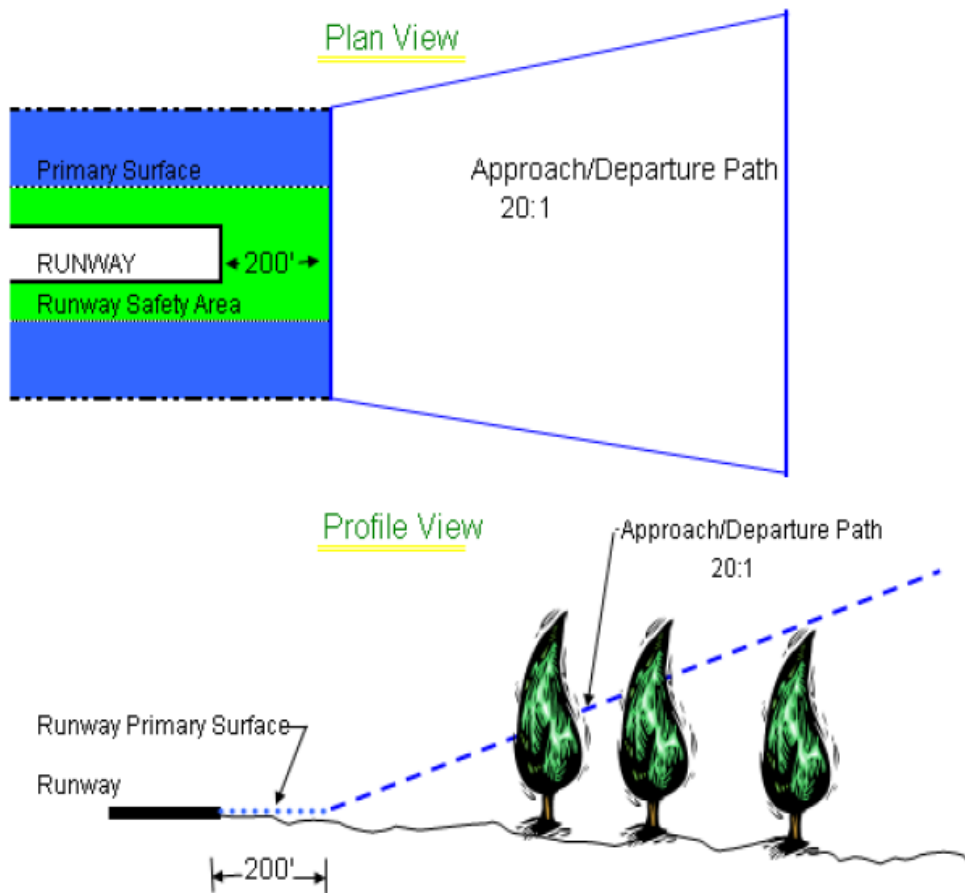


No prohibited activities were observed during this inspection.



# Appendix 1

Approach and Departure Path Dimensions			
Inner Width	Outer Width	Length	Acreage
250 Feet	450 Feet	1,000 Feet	8.04 Acres
Primary Surface Dimensions			
250 Feet Wide Centered Along Runway Centerline Extending 200 Feet Past the Runway End			
Runway Safety Area Dimensions			
120 Feet Wide Centered Along Runway Centerline Extending 200 Feet Past the Runway End			



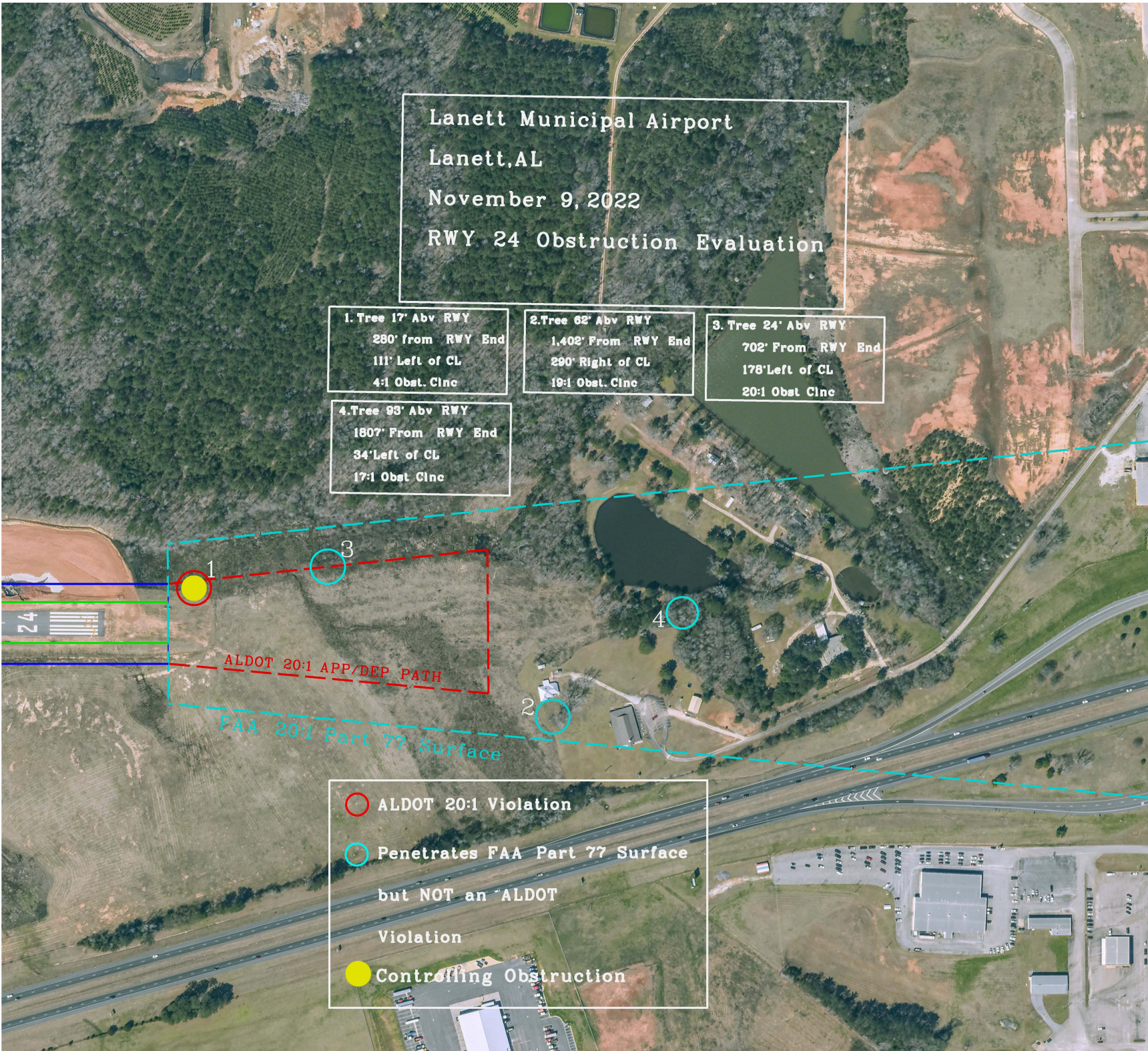
Lanett Municipal Airport  
Lanett, AL  
November 9, 2022  
RWY 24 Obstruction Evaluation

1. Tree 17' Abv RWY  
280' from RWY End  
111' Left of CL  
4:1 Obst. Cline

2. Tree 62' Abv RWY  
1,402' From RWY End  
290' Right of CL  
19:1 Obst. Cline

3. Tree 24' Abv RWY  
702' From RWY End  
178' Left of CL  
20:1 Obst Cline

4. Tree 93' Abv RWY  
1807' From RWY End  
34' Left of CL  
17:1 Obst Cline



LANETT MUNICIPAL AIRPORT  
Lanett, AL  
November 9, 2022  
RWY 6 Obstruction Evaluation

2. Gate 14' Abv. RWY  
658' from RWY End  
224' Left of CL  
32:1 Obst. Clrnc

FAA 34:1 Part 77 Surface

ALDOT 20:1 APP/DEP PATH

The Runway End is estimated for the purpose of this drawing. Actual measurements to calculate obstruction and object heights, were taken from the actual Runway End.

- Penetrates FAA Part 77 Surface but NOT an ALDOT Violation.
- Controlling Obstruction.

