



Kay Ivey
GOVERNOR

ALABAMA
DEPARTMENT OF TRANSPORTATION

AERONAUTICS BUREAU
1409 COLISEUM BOULEVARD
MONTGOMERY, ALABAMA 36110
PHONE (334) 242-6820
FAX (334) 353-6540
Internet: www.dot.state.al.us



John R. Cooper
TRANSPORTATION DIRECTOR

February 16, 2024

The Honorable Sonya Stinson
President, Monroe County Commission
65 N Alabama Avenue
Monroeville, AL 36461

**Subject: Annual Inspection Report
Monroe County Aeroplex**

Dear President Stinson:

An inspection of Monroe County Aeroplex was conducted by personnel of the Alabama Department of Transportation, Aeronautics Bureau on February 15, 2024. The purpose of the inspection was to update the information currently on file regarding the airport and to ascertain compliance with the rules and regulations of the Alabama Department of Transportation governing licensed public-use airports within the State of Alabama.

Attached you will find a copy of the Annual Inspection Report. As noted in the report, the airport meets all requirements for the issuance of an operating license.

If you should have any questions concerning the inspection or corrective actions, please do not hesitate to contact Mr. Caleb Nall with the Aeronautics Bureau at (334) 312-6748.

Sincerely,

Frank Farmer
Chief, Aeronautics Bureau

Copy: Mr. Rans Black, FAA/ADO
Mr. Derrick Owens, FAA/ADO
Mr. Jeff Griffin, County Engineer
Ms. Michelle Conway, GMC

February 15, 2024



ANNUAL INSPECTION REPORT



**MONROE COUNTY AEROPLEX
MONROEVILLE, ALABAMA**

Alabama Department of Transportation Aeronautics Bureau—Annual Airport Inspection Report

In accordance with the provisions of the Code of Alabama 23-1-357, an inspection of the **Monroe County Aeroplex** was conducted by **Mr. Caleb Nall** with the Alabama Department of Transportation Aeronautics Bureau on **February 15, 2024**.

The inspection was conducted on the airport under the provisions of the Administrative Code Chapter 450-9-1 for the following areas:

| Aeronautics Administrative Code | Inspection Results | Corrective Action | Notes |
|--|--|--|--|
| Approach & Departure Paths Administrative Code 450-9-1-.12 (1) | <i>In Compliance</i> <i>Maintenance</i> | Remove trees that penetrate the FAA Part 77 Approach Path. | Trees were observed in the FAA Part 77 34:1 Approach Path. |
| Primary Surface Administrative Code 450-9-1-.12 (2) | <i>In Compliance</i> | N/A | N/A |
| Runway Safety Area Administrative Code 450-9-1-.12 (3) | <i>In Compliance</i> | N/A | N/A |
| Airport Markings Administrative Code 450-9-1-.12 (4) | <i>In Compliance</i> <i>Maintenance</i> | Clean the runway markings so that they are visible. | Runway markings are dirty and becoming obscured. |
| Wind Direction Indicator Administrative Code 450-9-1-.12 (5) | <i>In Compliance</i> | N/A | N/A |
| Airport Lighting Administrative Code 450-9-1-.12 (6) | <i>In Compliance</i> <i>Maintenance</i> | The non-operational lights need to be replaced. | There were multiple lights out at the time of inspection. See page 10. |
| Runway, Taxiway and Apron Conditions Administrative Code 450-9-1-.12 (7) | <i>In Compliance</i> | N/A | N/A |
| Fueling Area Requirements Administrative Code 450-9-1-.12 (8) | <i>In Compliance</i> <i>Maintenance</i> | Replace cracking fuel hose. | The fueling hose is beginning to crack and needs to be replaced |
| Prohibited Activities Administrative Code 450-9-1-.16 | <i>In Compliance</i> | N/A | No evidence of prohibited activities were found. |
| Additional Items Administrative Code 450-9-1-.16 | N/A | N/A | N/A |

License Status—**COMPLIANCE**

The corrective actions that may be prescribed in this inspection report do not relieve the airport sponsor from compliance with any other Federal, State or local laws, ordinances or regulations that may be applicable. It is the responsibility of the airport sponsor to be aware of and obey all Federal, State or local laws, ordinances or regulations that may have a bearing on the corrective actions that may be specified in this report.

Code of Alabama 23-1-357(a)... a person or municipality may not operate an airport, restricted landing area, or other navigation facility without a license issued by this Department.

Monroe County Aeroplex

Approach and Departure Paths—RUNWAY 3

Administrative Code 450-9-1-.12(1)



There were no obstructions in the ALDOT Approach and Departure path. The trees circled in blue penetrate the FAA Part 77 34:1 Approach Path. See Appendix 2 for more information.

Note: Obstructions identified are representative and may not include all existing obstruction.

Monroe County Aeroplex

Approach and Departure Paths—RUNWAY 21

Administrative Code 450-9-1-.12(1)



There were no obstructions in the ALDOT Approach and Departure path. The obstructions circled in blue penetrate the FAA Part 77 34:1 Approach Path. See Appendix 3 for more information.

Note: Obstructions identified are representative and may not include all existing obstruction.

Monroe County Aeroplex

Primary Surface

Administrative Code 450-9-1-.12(2)



Primary Surface **MEETS** state licensing standards.

Monroe County Aeroplex

Runway Safety Area

Administrative Code 450-9-1-.12(3)



Runway Safety Area **MEETS** state licensing standards.

Monroe County Aeroplex

Airport Markings—Runway

Administrative Code 450-9-1-.12(4)



Runway markings are in **FAIR** condition.

Maintenance: The runway markings are beginning to become obscured and need to be cleaned.

Monroe County Aeroplex

Airport Markings—Taxiway

Administrative Code 450-9-1-.12(4)



Taxiway markings are in **FAIR** condition.

Monroe County Aeroplex

Airport Markings—Apron

Administrative Code 450-9-1-.12(4)



Apron markings are in **FAIR** condition.

Monroe County Aeroplex

Wind Direction Indicator

Administrative Code 450-9-1-.12(5)



Wind direction indicator is in **GOOD** condition.

Monroe County Aeroplex

Airport Lighting

Administrative Code 450-9-1-.12(6)

An inspection of the lighting system had the following results:

| | |
|-------------------------|--------------|
| Runway Lights | 3 inoperable |
| Taxiway Lights | 0 inoperable |
| Threshold Lights | 0 inoperable |
| PAPI | 0 inoperable |
| REIL | 2 inoperable |

MEETS State Licensing Standards for night-time operation.

Monroe County Aeroplex

Runway, Taxiway and Apron Conditions—RUNWAY

Administrative Code 450-9-1-.12(7)



Runway surface is in **FAIR** condition.

Monroe County Aeroplex

Runway, Taxiway and Apron Conditions—TAXIWAY

Administrative Code 450-9-1-.12(7)



Taxiway surface is in **FAIR** condition.

Monroe County Aeroplex

Runway, Taxiway and Apron Conditions—APRON

Administrative Code 450-9-1-.12(7)



Apron surface is in **FAIR** condition.

Monroe County Aeroplex

Fueling Area Requirements

Administrative Code 450-9-1-.12(8)



Fueling area **MEETS** state licensing standards. However, the State of Alabama Department of Agriculture may have additional requirements for fueling systems that were not considered during this inspection.

Maintenance: Fuel hose is beginning to crack and should be replaced soon.

Monroe County Aeroplex

Prohibited Activities

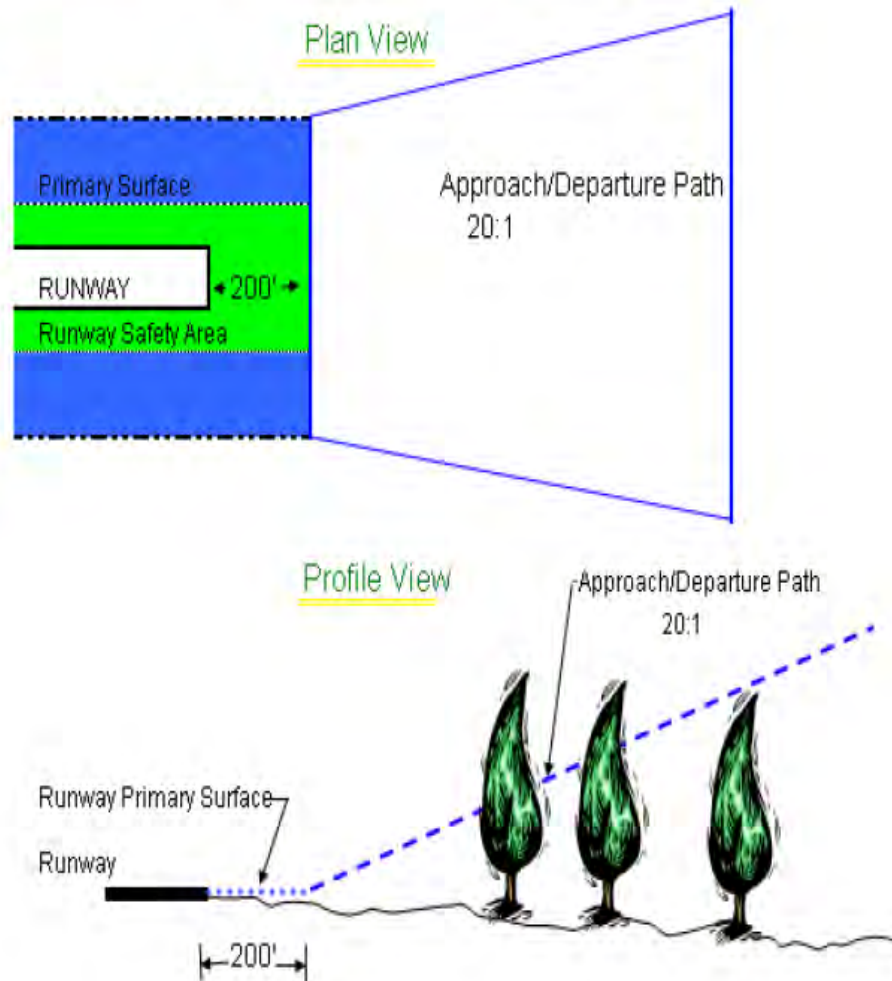
Administrative Code 450-9-1-.16



No prohibited activities were observed during this inspection.

APPENDIX 1

| Approach and Departure Path Dimensions | | | |
|--|-------------|------------|------------|
| Inner Width | Outer Width | Length | Acreage |
| 250 Feet | 450 Feet | 1,000 Feet | 8.04 Acres |
| Primary Surface Dimensions | | | |
| 250 Feet Wide Centered Along Runway Centerline | | | |
| Extending 200 Feet Past the Runway End | | | |
| Runway Safety Area Dimensions | | | |
| 120 Feet Wide Centered Along Runway Centerline | | | |
| Extending 200 Feet Past the Runway End | | | |

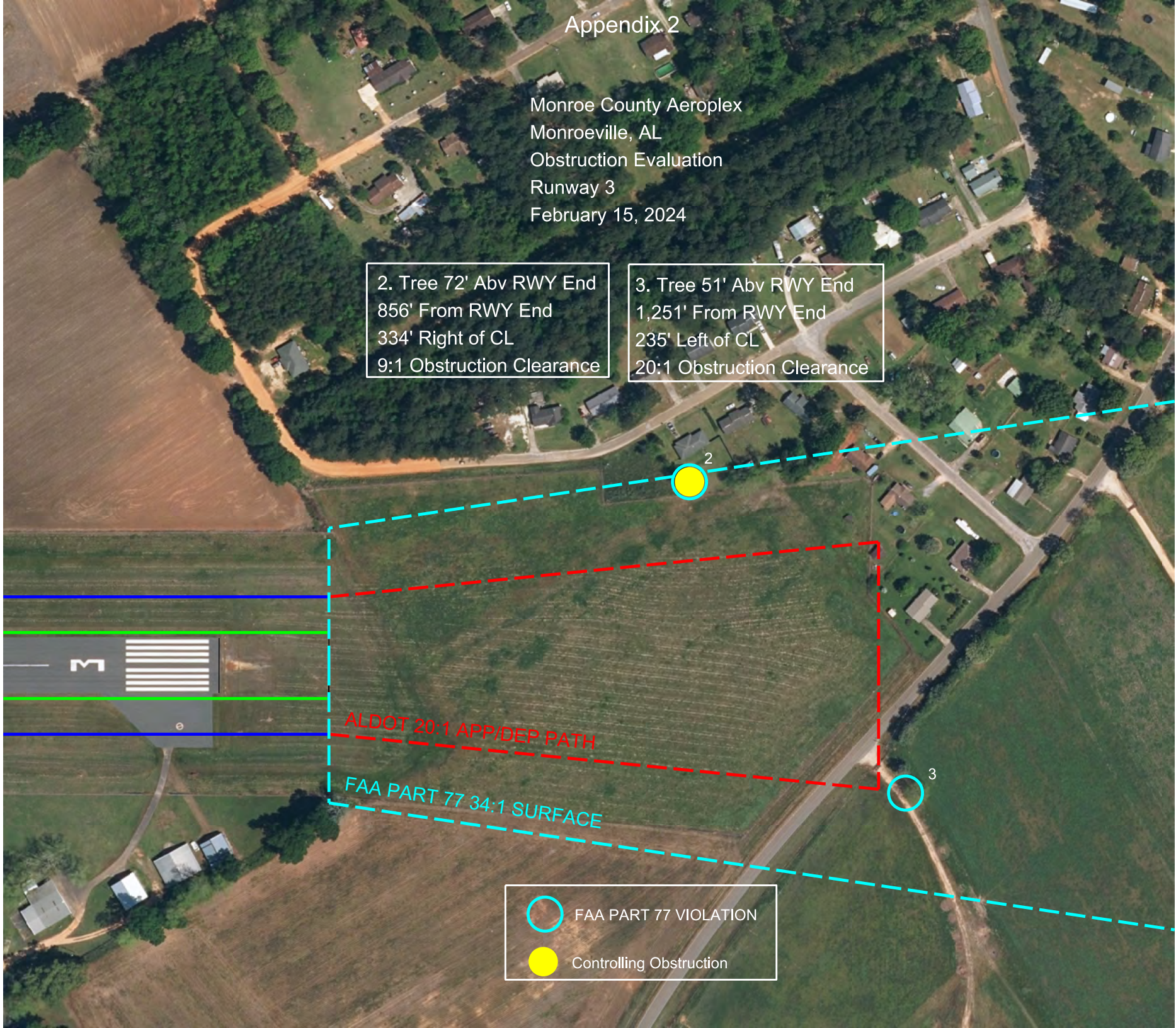


Appendix 2

Monroe County Aeroplex
Monroeville, AL
Obstruction Evaluation
Runway 3
February 15, 2024

2. Tree 72' Abv RWY End
856' From RWY End
334' Right of CL
9:1 Obstruction Clearance

3. Tree 51' Abv RWY End
1,251' From RWY End
235' Left of CL
20:1 Obstruction Clearance



○ FAA PART 77 VIOLATION
● Controlling Obstruction

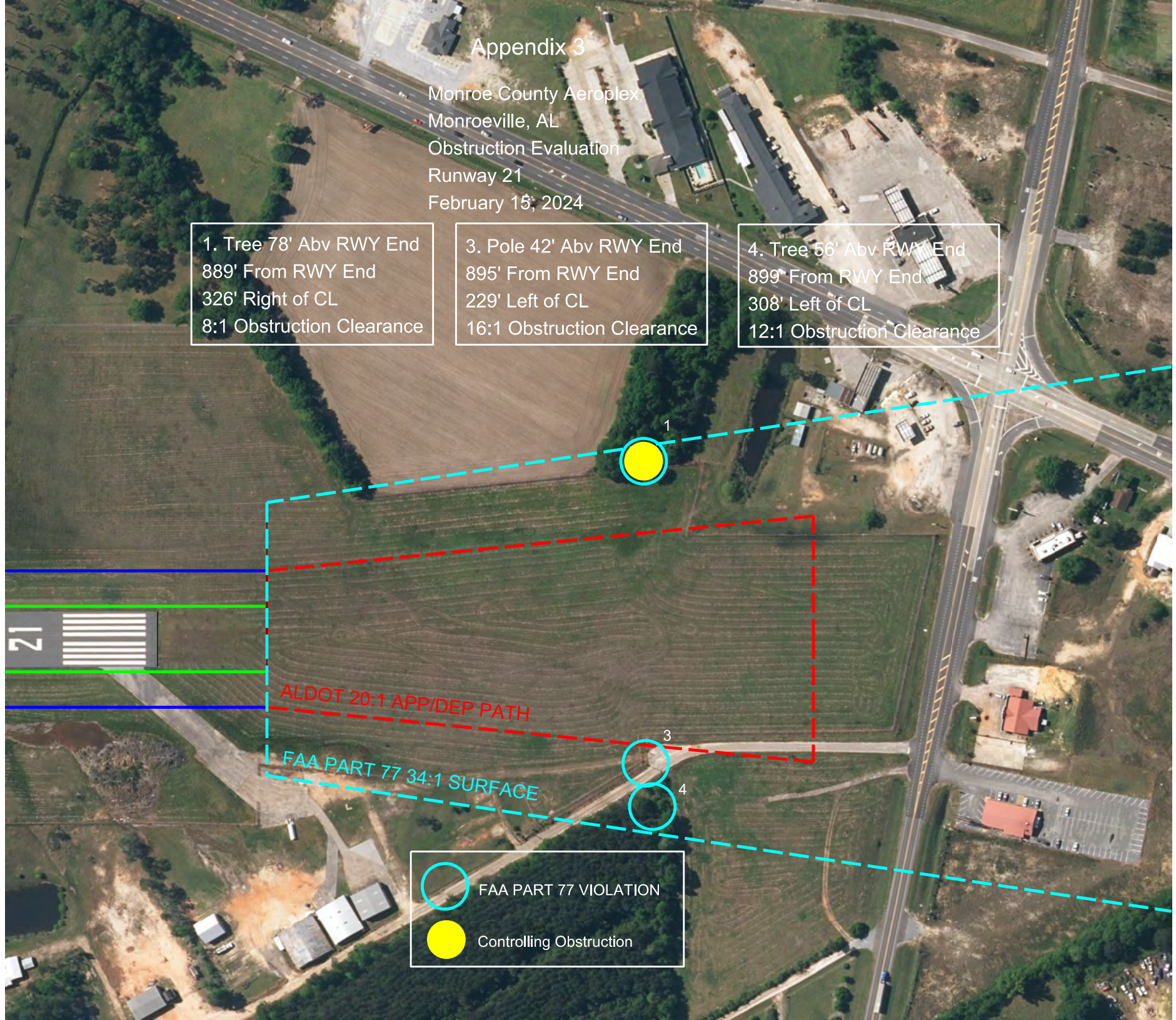
Appendix 3



Monroe County Aeroplex
Monroeville, AL
Obstruction Evaluation
Runway 21
February 15, 2024

1. Tree 78' Abv RWY End
889' From RWY End
326' Right of CL
8:1 Obstruction Clearance

3. Pole 42' Abv RWY End
895' From RWY End
229' Left of CL
16:1 Obstruction Clearance

4. Tree 56' Abv RWY End
899' From RWY End
308' Left of CL
12:1 Obstruction Clearance



 FAA PART 77 VIOLATION
 Controlling Obstruction