



Kay Ivey
GOVERNOR

ALABAMA
DEPARTMENT OF TRANSPORTATION

AERONAUTICS BUREAU
1409 COLISEUM BOULEVARD
MONTGOMERY, ALABAMA 36110
PHONE (334) 242-6820
FAX (334) 353-6540
Internet: www.dot.state.al.us



John R. Cooper
TRANSPORTATION DIRECTOR

March 21, 2024

The Honorable Mark Blakenship
Mayor, City of Ozark
P.O. Box 1987
Ozark, AL 36361

Subject: Annual Inspection Report
Ozark Municipal Airport

Dear Mayor Blakenship:

An inspection of Ozark Municipal Airport was conducted by personnel of the Alabama Department of Transportation Aeronautics Bureau on March 12, 2024. The purpose of the inspection was to update the information currently on file regarding the airport and to ascertain compliance with the rules and regulations of the Alabama Department of Transportation governing licensed public-use airports within the State of Alabama.

Attached you will find a copy of the Annual Inspection Report. As noted in the report, the airport meets all requirements for the issuance of an operating license.

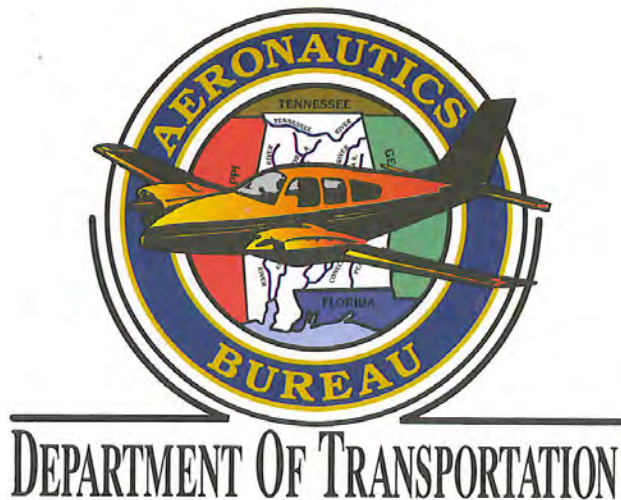
If you should have any questions concerning the inspection or corrective actions, please do not hesitate to contact Mr. Caleb Nall with the Aeronautics Bureau at (334) 242-6839.

Sincerely,

Frank Farmer
Chief, Aeronautics Bureau

Copy: Mr. Rans Black, FAA/ADO
Mr. Luke Flowers, FAA/ADO
Ms. Denise Ellis, City of Ozark
Mr. Keith Shippey, Barge Design Solutions

March 12, 2024



ANNUAL INSPECTION REPORT



OZARK MUNICIPAL AIRPORT —BLACKWELL FIELD
OZARK, ALABAMA

Alabama Department of Transportation Aeronautics Bureau—Annual Airport Inspection Report

In accordance with the provisions of the Code of Alabama 23-1-357, an inspection of the **Ozark Municipal Airport - Blackwell Field** was conducted by **Mr. Caleb Nall** with the Alabama Department of Transportation Aeronautics Bureau on **March 12, 2024**

The inspection was conducted on the airport under the provisions of the Administrative Code Chapter 450-9-1 for the following areas:

Aeronautics Administrative Code	Inspection Results	Corrective Action	Notes
Approach & Departure Paths Administrative Code 450-9-1-.12 (1)	<i>In Compliance</i> <i>Maintenance</i>	Remove trees that penetrate the FAA Part 77 Approach Surface.	Trees penetrate the Part 77 Approach Surface.
Primary Surface Administrative Code 450-9-1-.12 (2)	<i>In Compliance</i>	N/A	N/A
Runway Safety Area Administrative Code 450-9-1-.12 (3)	<i>In Compliance</i>	N/A	N/A
Airport Markings Administrative Code 450-9-1-.12 (4)	<i>In Compliance</i> <i>Maintenance</i>	Clean runway and taxiway markings so they are more visible.	Runway and taxiway markings are dirty and obscured.
Wind Direction Indicator Administrative Code 450-9-1-.12 (5)	<i>In Compliance</i> <i>Maintenance</i>	Wind indicator needs to be replaced.	Wind indicator is fading.
Airport Lighting Administrative Code 450-9-1-.12 (6)	<i>In Compliance</i>	N/A	Lighting is not pilot controlled during daytime and only operational at night.
Runway, Taxiway and Apron Conditions Administrative Code 450-9-1-.12 (7)	<i>In Compliance</i>	N/A	N/A
Fueling Area Requirements Administrative Code 450-9-1-.12 (8)	<i>In Compliance</i>	N/A	N/A
Prohibited Activities Administrative Code 450-9-1-.16	<i>In Compliance</i>	N/A	N/A

*License Status—**COMPLIANCE***

The corrective actions that may be prescribed in this inspection report do not relieve the airport sponsor from compliance with any other Federal, State or local laws, ordinances or regulations that may be applicable. It is the responsibility of the airport sponsor to be aware of and obey all Federal, State or local laws, ordinances or regulations that may have a bearing on the corrective actions that may be specified in this report.

Code of Alabama 23-1-357(a)... a person or municipality may not operate an airport, restricted landing area, or other navigation facility without a license issued by this Department.

Department.

Ozark Municipal Airport—Blackwell Field

Approach and Departure Paths—RUNWAY 13

Administrative Code 450-9-1-.12(1)



No ALDOT obstructions located in the Approach/Departure Path of Runway 13. However, there are several trees that violate the FAA Part 77 Surface. Please see Appendix 2 for more information.

Note: Obstructions identified are representative and may not include all existing obstructions.

Ozark Municipal Airport—Blackwell Field

Approach and Departure Paths—RUNWAY 31

Administrative Code 450-9-1-.12(1)



No ALDOT obstructions located in the Approach/Departure Path of Runway 31. However, there are several trees that violate the FAA Part 77 Surface. Please see Appendix 2 for more information.

Note: Obstructions identified are representative and may not include all existing obstructions.

Ozark Municipal Airport—Blackwell Field

Primary Surface

Administrative Code 450-9-1-.12(2)



Primary surface meets state licensing standards.

Ozark Municipal Airport—Blackwell Field

Runway Safety Area

Administrative Code 450-9-1-.12(3)



Runway Safety Area **meets** state licensing standards.

Ozark Municipal Airport—Blackwell Field

Airport Markings— RUNWAY

Administrative Code 450-9-1-.12(4)



Runway markings are in **FAIR** condition.

Maintenance: Some of the runway markings are becoming dirty and obscured and need to be cleaned.

Ozark Municipal Airport—Blackwell Field

Airport Markings— TAXIWAY

Administrative Code 450-9-1-.12(4)



Taxiway markings are generally in **FAIR** condition.

Maintenance: Some of the taxiway markings are becoming dirty and obscured and need to be cleaned.

Ozark Municipal Airport—Blackwell Field

Airport Markings— APRON—North Side

Administrative Code 450-9-1-.12(4)



North-side apron markings pictured above are in **GOOD** condition.

Ozark Municipal Airport—Blackwell Field

Airport Markings— APRON—South Side

Administrative Code 450-9-1-.12(4)



South-side apron markings by the terminal building are in **GOOD** condition.

Ozark Municipal Airport—Blackwell Field

Wind Direction Indicator

Administrative Code 450-9-1-.12(5)



Wind direction indicator is in **FAIR** condition.

Maintenance: Wind indicator is beginning to fade and needs to be replaced.

Ozark Municipal Airport—Blackwell Field

Airport Lighting

Administrative Code 450-9-1-.12(6)

An inspection of the lighting system had the following results:

Runway Lights	0 inoperable
Taxiway Lights	0 inoperable
Threshold Lights	0 inoperable
PAPI	0 inoperable
REIL	N/A

MEETS State Licensing Standards for night-time operation.

Ozark Municipal Airport—Blackwell Field

Runway, Taxiway and Apron Conditions—RUNWAY

Administrative Code 450-9-1-.12(7)



Runway surface is in **FAIR** condition.

Ozark Municipal Airport—Blackwell Field

Runway, Taxiway and Apron Conditions—TAXIWAY

Administrative Code 450-9-1-.12(7)



Taxiway surface is in **GOOD** condition.

Ozark Municipal Airport—Blackwell Field

Runway, Taxiway and Apron Conditions—APRON—North Side

Administrative Code 450-9-1-.12(7)



The new north-side apron surface is in **GOOD** condition.

Ozark Municipal Airport—Blackwell Field

Runway, Taxiway and Apron Conditions—APRON—South Side

Administrative Code 450-9-1-.12(7)



The south-side apron surface near terminal building in **FAIR** condition.

Ozark Municipal Airport—Blackwell Field

Fueling Area Requirements

Administrative Code 450-9-1-.12(8)



The fueling area meets the requirements established by the Alabama Department of Transportation. However, the State of Alabama Department of Agriculture may have additional requirements for fueling systems that were not considered during this inspection.

Ozark Municipal Airport—Blackwell Field

Prohibited Activities

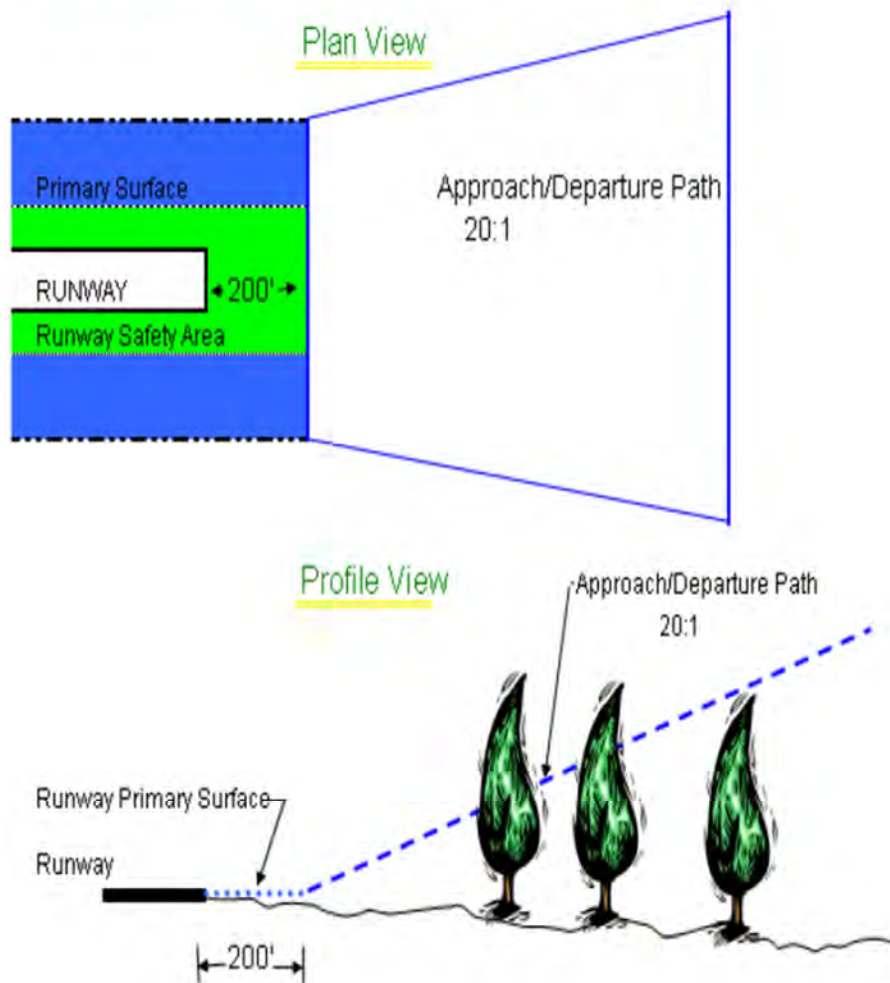
Administrative Code 450-9-1-.16



No prohibited activities were observed during this inspection.

APPENDIX 1

Approach and Departure Path Dimensions			
Inner Width	Outer Width	Length	Acreage
250 Feet	450 Feet	1,000 Feet	8.04 Acres
Primary Surface Dimensions			
250 Feet Wide Centered Along Runway Centerline			
Extending 200 Feet Past the Runway End			
Runway Safety Area Dimensions			
120 Feet Wide Centered Along Runway Centerline			
Extending 200 Feet Past the Runway End			



Appendix 2

Blackwell Field Airport,
Ozark, AL
Obstruction Evaluation
Runway 13
March 12, 2024

1. Tree 32' Abv RWY End
957' From RWY End
248' Right of CL
23:1 Obstruction Clearance

2. Tree 67' Abv RWY End
1,519' From RWY End
108' Right of CL
19:1 Obstruction Clearance

3. Tree 20' Abv RWY End
815' From RWY End
108' Right of CL
30:1 Obstruction Clearance

4. Tree 90' Abv RWY End
1,967' From RWY End
162' Left of CL
19:1 Obstruction Clearance

ALDOT APP/DEP 20:1 PATH
FAA PART 77 34:1 SURFACE

○ FAA PART 77 VIOLATION
● Controlling Obstruction



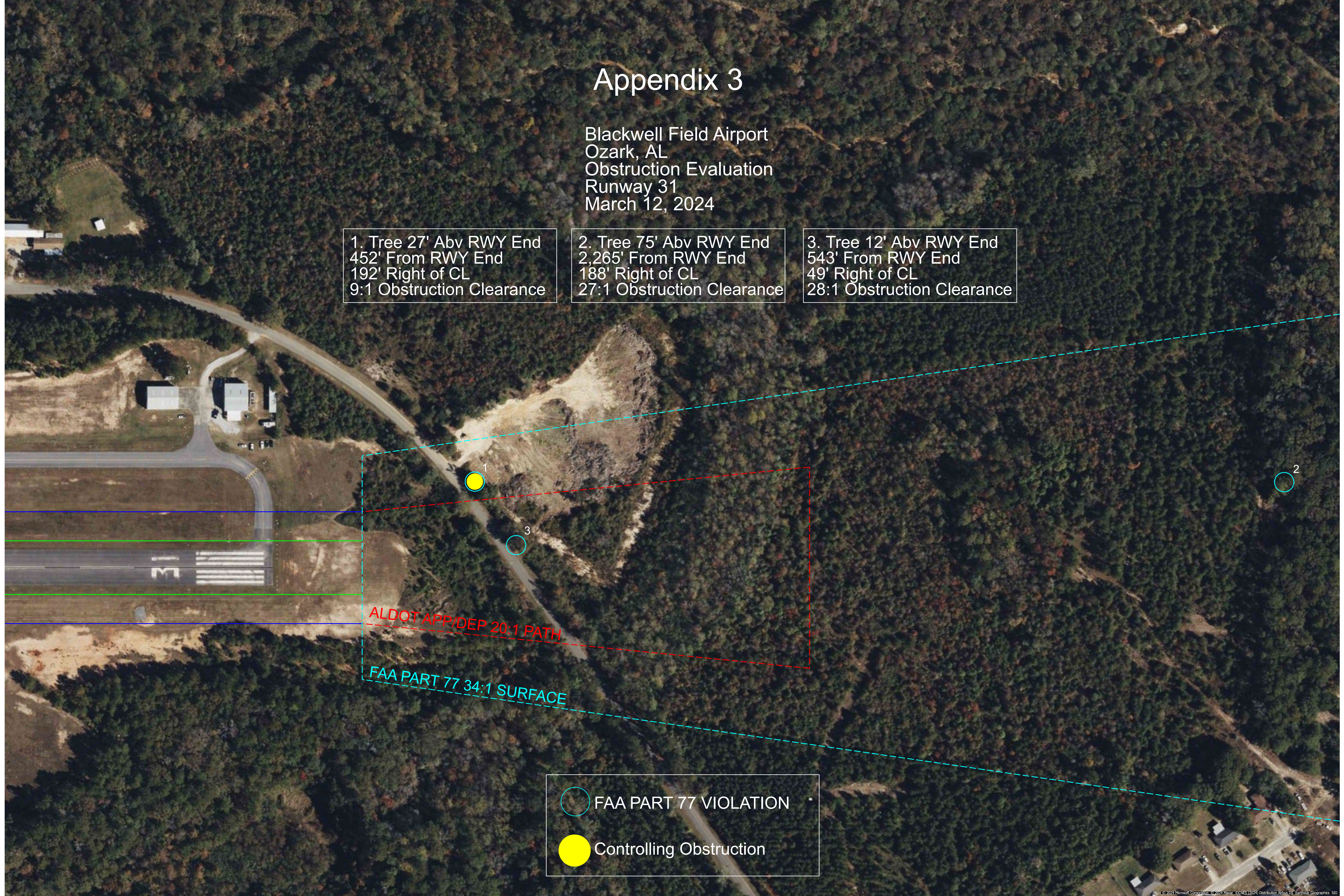
Appendix 3

Blackwell Field Airport
Ozark, AL
Obstruction Evaluation
Runway 31
March 12, 2024

1. Tree 27' Abv RWY End
452' From RWY End
192' Right of CL
9:1 Obstruction Clearance

2. Tree 75' Abv RWY End
2,265' From RWY End
188' Right of CL
27:1 Obstruction Clearance

3. Tree 12' Abv RWY End
543' From RWY End
49' Right of CL
28:1 Obstruction Clearance



ALDOT APP/DEP 20:1 PATH

FAA PART 77 34:1 SURFACE

○ FAA PART 77 VIOLATION
● Controlling Obstruction