



Kay Ivey
GOVERNOR

ALABAMA
DEPARTMENT OF TRANSPORTATION

AERONAUTICS BUREAU
1409 COLISEUM BOULEVARD
MONTGOMERY, ALABAMA 36110
PHONE (334) 242-6820
FAX (334) 353-6540
Internet: www.dot.state.al.us



John R. Cooper
TRANSPORTATION DIRECTOR

August 11, 2023

Ms. Cheryl Bowles
Pickens County Commission
20 Phoenix Avenue PO Box 460
Carrollton, AL 35447

**Subject: Annual Inspection Report
North Pickens Airport (3M8)**

Dear Ms. Bowles:

An inspection of the North Pickens Airport was conducted by personnel of the Alabama Department of Transportation Aeronautics Bureau on August 3, 2023. The purpose of the inspection was to update the information currently on file regarding the airport and to ascertain compliance with the rules and regulations of the Alabama Department of Transportation governing licensed public-use airports within the State of Alabama.

Attached you will find a copy of the Annual Inspection Report. As noted in the report, the airport **does not meet** the requirements for the issuance of an operating license. Once the trees have been removed and the violations have been addressed, please contact this office to schedule a re-inspection.

If you should have any questions concerning the inspection or corrective actions, please do not hesitate to contact the Aeronautics Bureau at (334) 242-6820.

Sincerely,

Frank Farmer
Chief, Aeronautics Bureau

Copy: Mr. Rans Black, FAA/ADO
Ms. Inez Williams, FAA/ADO
Mr. Randall Richards, Garver
Mr. Tommy Hope, Airport Manager

Alabama Department of Transportation Aeronautics Bureau—Annual Airport Inspection Report

In accordance with the provisions of the Code of Alabama 23-1-357, an inspection of the **North Pickens Airport** was conducted by **Mr. Bennett Head and Mr. Mark Bowron** with the Alabama Department of Transportation Aeronautics Bureau on **August 3, 2023**.

The inspection was conducted on the airport under the provisions of the Administrative Code Chapter 450-9-1 for the following areas:

Aeronautics Administrative Code	Inspection Results	Corrective Action	Notes
Approach & Departure Paths Administrative Code 450-9-1-.12 (1)	<i>Violation</i>	Remove trees that penetrate the ALDOT Approach/Departure Path.	There are two penetrations to the ALDOT AP-P/DEP Path on RWY 19. Additionally, there are two penetrations to the FAA Part 77 Surface on RWY 1.
Primary Surface Administrative Code 450-9-1-.12 (2)	<i>Violation</i>	Remove brush and trees within Primary Surface. Additionally, mitigate erosion of the primary surface.	There are several areas of the airport that have trees/brush within the Primary Surface. There are also two locations on the airfield that are eroding into the Primary Surface due to a water source.
Runway Safety Area Administrative Code 450-9-1-.12 (3)	<i>In Compliance</i>	N/A	N/A
Airport Markings Administrative Code 450-9-1-.12 (4)	<i>In Compliance</i>		N/A
Wind Direction Indicator Administrative Code 450-9-1-.12 (5)	<i>In Compliance</i>	N/A	N/A
Airport Lighting Administrative Code 450-9-1-.12 (6)	<i>In Compliance</i>	N/A	
Runway, Taxiway and Apron Conditions Administrative Code 450-9-1-.12 (7)	<i>In Compliance</i>	N/A	Apron markings are in poor condition.
Fueling Area Requirements Administrative Code 450-9-1-.12 (8)	<i>In Compliance</i>	N/A	N/A
Prohibited Activities Administrative Code 450-9-1.16	<i>In Compliance</i>	N/A	N/A
Additional Items	<i>In Compliance</i>	N/A	N/A

License Status—**SUSPENDED**

The corrective actions that may be prescribed in this inspection report do not relieve the airport sponsor from compliance with any other Federal, State or local laws, ordinances or regulations that may be applicable. It is the responsibility of the airport sponsor to be aware of and obey all Federal, State or local laws, ordinances or regulations that may have a bearing on the corrective actions that may be specified in this report.

Code of Alabama 23-1-357(a)... a person or municipality may not operate an airport, restricted landing area, or other navigation facility without a license issued by this Department.

North Pickens Airport

Approach and Departure Paths—RUNWAY 1

Administrative Code 450-9-1-.12(1)



There are no penetrations to the ALDOT Approach/ Departure Path. However, there are two penetrations to the FAA Part 77 Surface. Please see Appendix #2 for more information.

Note: Obstructions identified are representative and may not include all existing obstructions.

North Pickens Airport

Approach and Departure Paths—RUNWAY 19

Administrative Code 450-9-1-.12(1)



VIOLATION: There are two penetrations to the ALDOT Approach/ Departure Path. Please see Appendix #3 for more information.

Note: Obstructions found are representative and may not include all existing obstructions.

North Pickens Airport

Primary Surface

Administrative Code 450-9-1-.12(2)



VIOLATION: Multiple violations to the primary surface were found. Brush and trees are encroaching in several locations within the primary surface. Additionally, there are two locations that are eroding the Primary Surface from a water source. See Appendix #4 for more information.

North Pickens Airport

Runway Safety Area

Administrative Code 450-9-1-.12(3)



Runway Safety Area **meets** state licensing standards.

North Pickens Airport

Airport Markings—Runway

Administrative Code 450-9-1-.12(4)



Runway markings are in **GOOD** condition.

North Pickens Airport

Airport Markings—Taxiway

Administrative Code 450-9-1-.12(4)



Taxiway markings are in **GOOD** condition.

North Pickens Airport

Airport Markings—Apron

Administrative Code 450-9-1-.12(4)



There are currently no Apron markings at this location.

North Pickens Airport

Wind Direction Indicator

Administrative Code 450-9-1-.12(5)



Wind direction indicator is in **GOOD** condition.

North Pickens Airport

Airport Lighting

Administrative Code 450-9-1-.12(6)

An inspection of the lighting system had the following results:

Runway Lights	2 inoperable
Taxiway Lights	0 inoperable
Threshold Lights	3 inoperable, 1 Broken
PAPI	0 inoperable
REIL	2 Inoperable

MEETS State Licensing Standards for night-time operation.

North Pickens Airport

Runway, Taxiway and Apron Conditions—RUNWAY

Administrative Code 450-9-1-.12(7)



Runway surface is in **GOOD** condition.

North Pickens Airport

Runway, Taxiway and Apron Conditions—TAXIWAY

Administrative Code 450-9-1-.12(7)



Taxiway surface is in **FAIR** condition.

North Pickens Airport

Runway, Taxiway and Apron Conditions—APRON

Administrative Code 450-9-1-.12(7)



Apron surface is in **POOR** condition.

North Pickens Airport

Fueling Area Requirements

Administrative Code 450-9-1-.12(8)



The fueling area meets the requirements established by the Alabama Department of Transportation. However, the State of Alabama Department of Agriculture may have additional requirements for fueling systems that were not considered during this inspection.

North Pickens Airport

Prohibited Activities

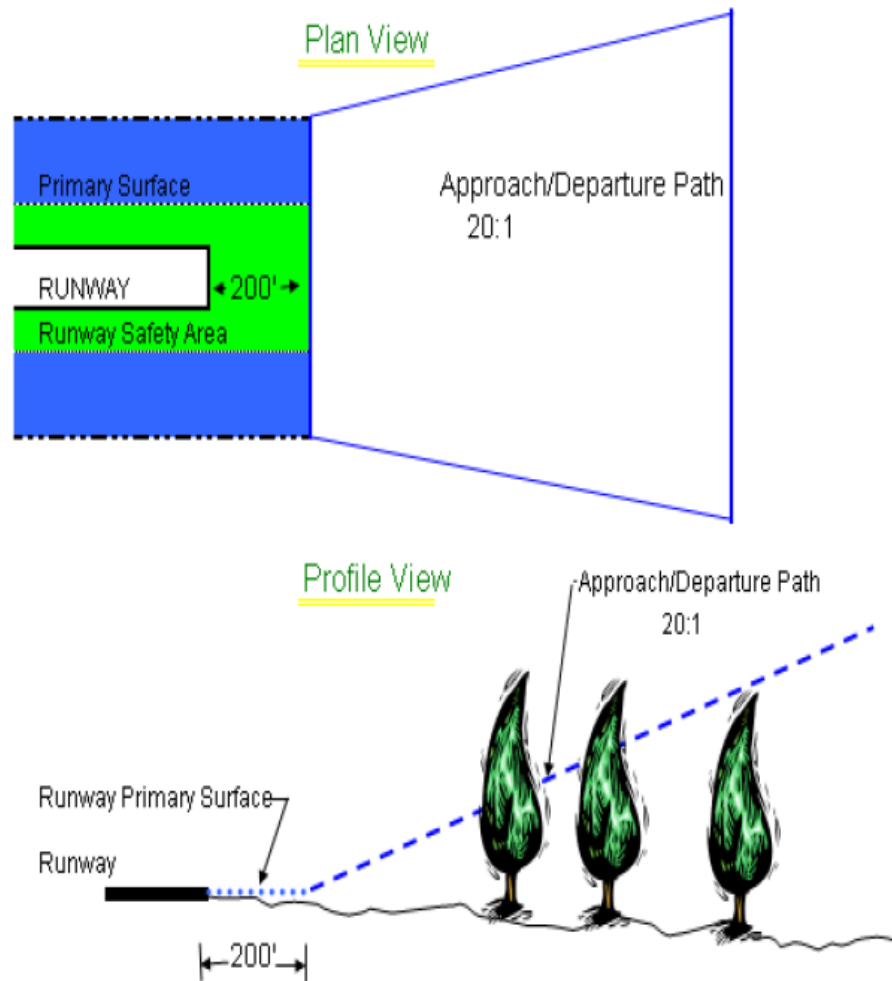
Administrative Code 450-9-1-.16



No prohibited activities were observed during this inspection.

APPENDIX 1

Approach and Departure Path Dimensions			
Inner Width	Outer Width	Length	Acreage
250 Feet	450 Feet	1,000 Feet	8.04 Acres
Primary Surface Dimensions			
250 Feet Wide Centered Along Runway Centerline			
Extending 200 Feet Past the Runway End			
Runway Safety Area Dimensions			
120 Feet Wide Centered Along Runway Centerline			
Extending 200 Feet Past the Runway End			

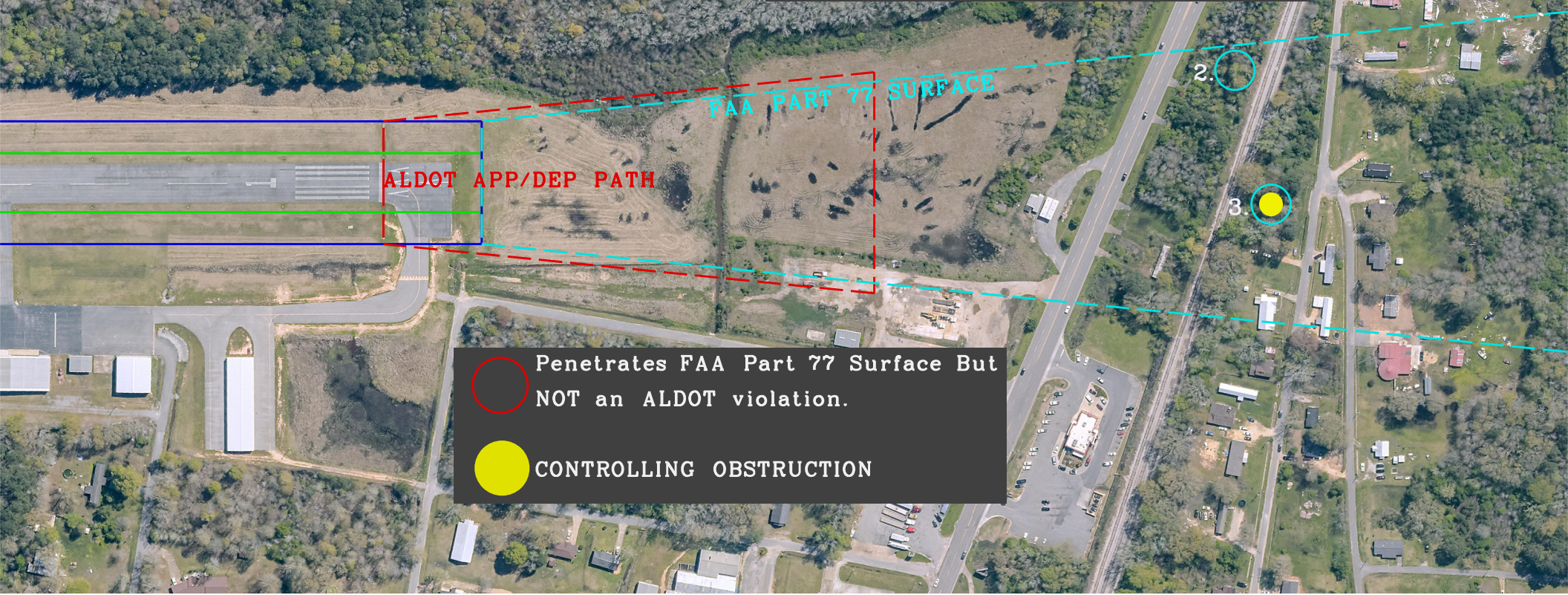




APPENDIX #2

NORTH PICKENS AIRPORT
REFORM, AL
AUGUST 3, 2023
RUNWAY 1 OBSTRUCTION EVALUATION

2. Tree 78' Abv. RWY
1,735' From DISPLD Threshold
229' Right of CL
17:1 Obst. Clrnc from RWY END
19:1 Obst. Clrnc from DISPLD Threshold

3. Tree 96' Abv. RWY
1,808' From DISPLD Threshold
44' Right of CL
15:1 Obst. Clrnc From RWY END
16:1 Obst. Clrnc from DISPLD THRESHOLD



-  Penetrates FAA Part 77 Surface But NOT an ALDOT violation.
-  CONTROLLING OBSTRUCTION

APPENDIX #3

NORTH PICKENS AIRPORT
REFORM, AL
AUGUST 3, 2023
RUNWAY 19 OBSTRUCTION EVALUATION

3. Tree 17' Abv. RWY
313' From RWY End
110' Left of CL
6:1 Obst. Clrnc

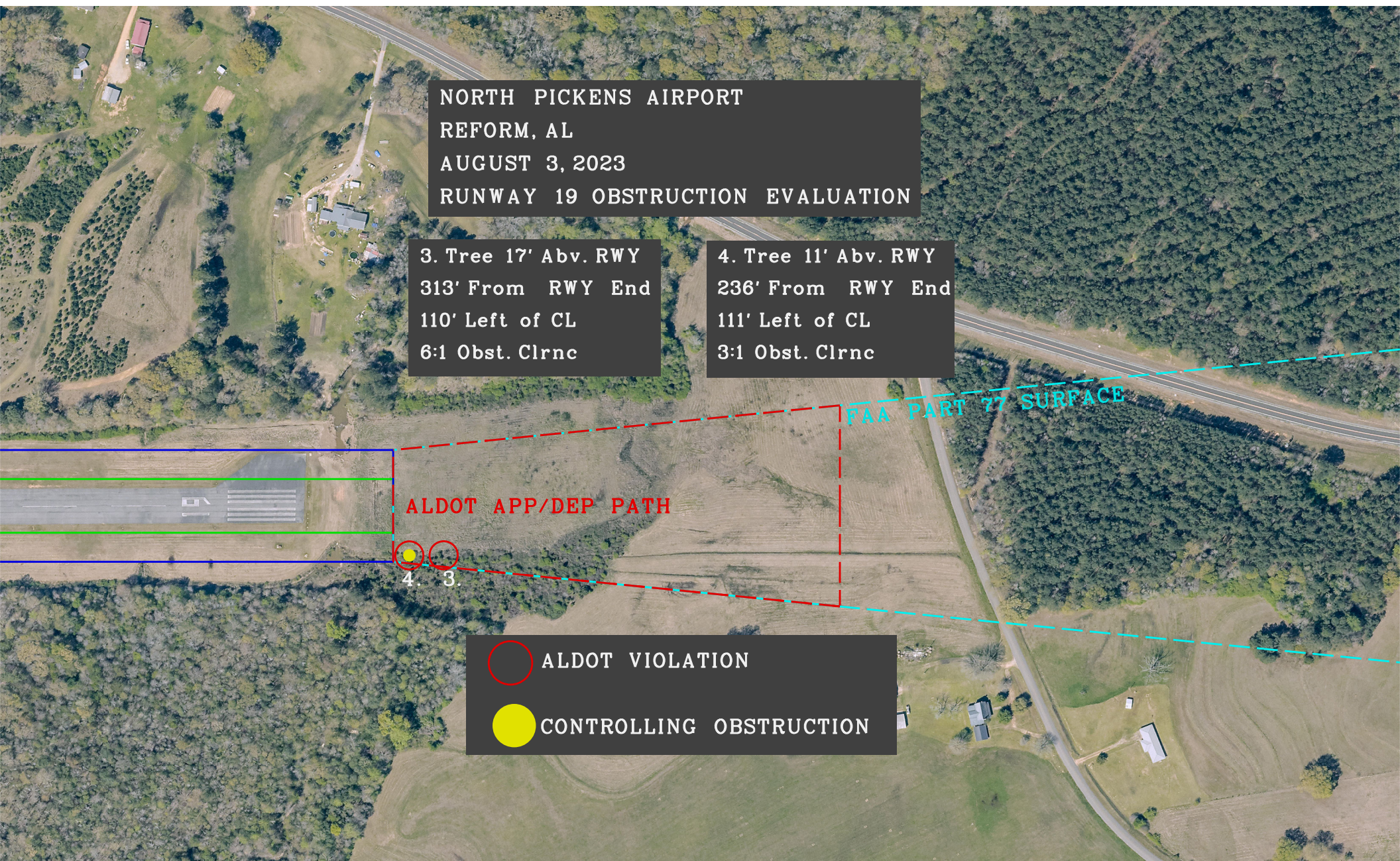
4. Tree 11' Abv. RWY
236' From RWY End
111' Left of CL
3:1 Obst. Clrnc

ALDOT APP/DEP PATH

FAA PART 77 SURFACE

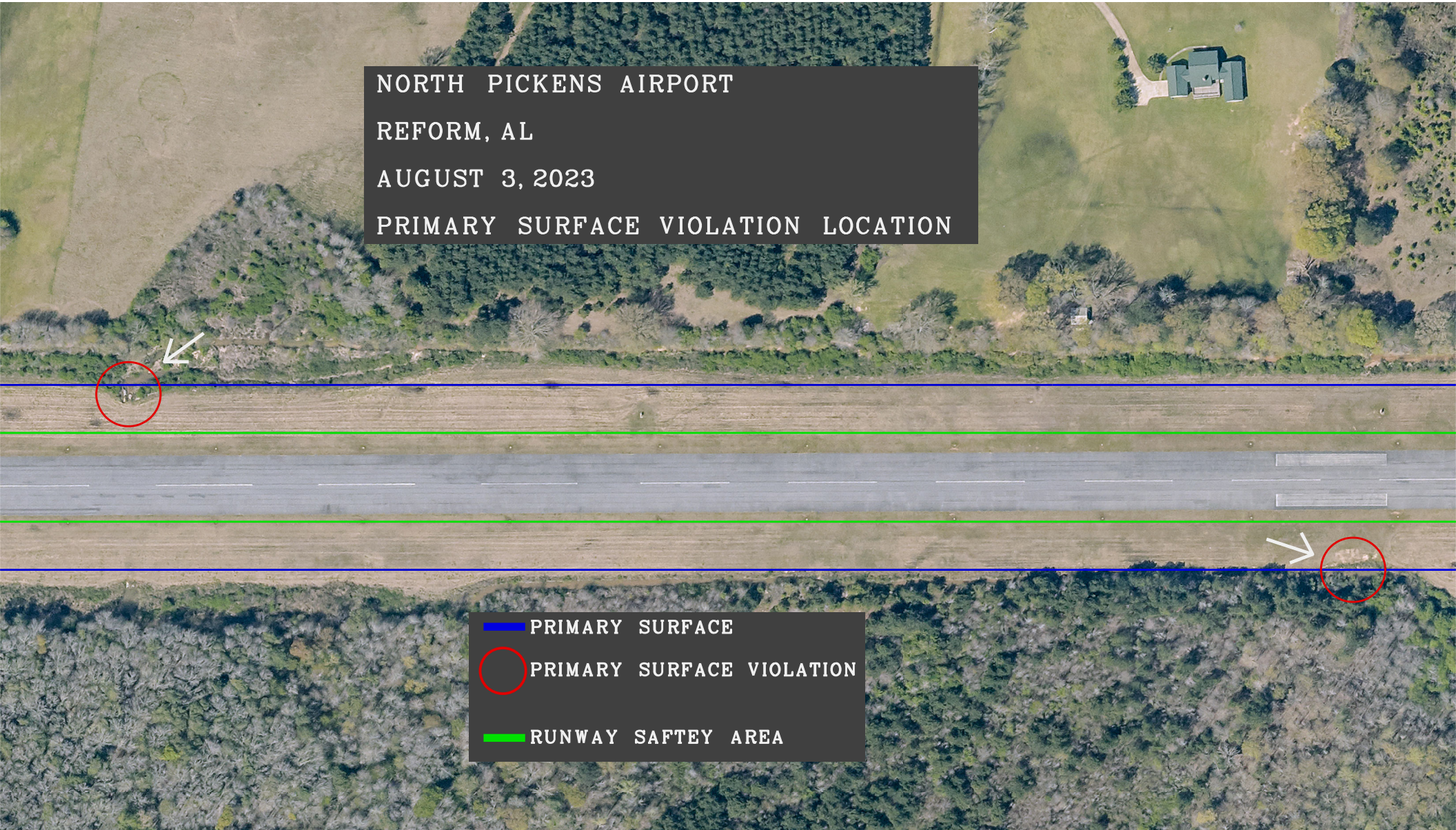
4. 3.

○ ALDOT VIOLATION
● CONTROLLING OBSTRUCTION



APPENDIX #4

NORTH PICKENS AIRPORT
REFORM, AL
AUGUST 3, 2023
PRIMARY SURFACE VIOLATION LOCATION



- PRIMARY SURFACE
- PRIMARY SURFACE VIOLATION
- RUNWAY SAFETY AREA