



Kay Ivey
GOVERNOR

ALABAMA
DEPARTMENT OF TRANSPORTATION

AERONAUTICS BUREAU
1409 COLISEUM BOULEVARD
MONTGOMERY, ALABAMA 36110

PHONE (334) 242-6820
FAX (334) 353-6540
Internet: www.dot.state.al.us



John R. Cooper
TRANSPORTATION DIRECTOR

July 31, 2023

Mr. Ray Miller
Chairman, Talladega Airport Board
566 Airport Drive
Lincoln, Alabama 35096

Subject: Annual Inspection Report
Talladega Municipal Airport (ASN)

Dear Mr. Miller:

An inspection of the Talladega Municipal Airport was conducted by personnel of the Alabama Department of Transportation Aeronautics Bureau on July 13, 2023. The purpose of the inspection was to update the information currently on file regarding the airport and to ascertain compliance with the rules and regulations of the Alabama Department of Transportation governing licensed public-use airports within the State of Alabama.

Attached you will find a copy of the Annual Inspection Report. As noted in the report, the airport meets the requirements for the issuance of an operating license. A signed license document will be mailed separately within a few weeks.

If you should have any questions concerning the inspection or corrective actions, please do not hesitate to contact Mr. Bennett Head with the Aeronautics Bureau at (334) 242-6831.

Sincerely,

Frank Farmer
Chief, Aeronautics Bureau

Copy: Mr. Rans Black, FAA/ADO
Mr. Lorn Whittaker, FAA/ADO
Mr. Joshua Stump, Neel-Schaffer, Inc.
Mr. Jim Brock, Airport Manager

Alabama Department of Transportation Aeronautics Bureau—Annual Airport Inspection Report

In accordance with the provisions of the Code of Alabama 23-1-357, an inspection of the **Talladega Municipal Airport** was conducted by **Mr. Bennett Head** with the Alabama Department of Transportation Aeronautics Bureau on **July 13, 2023**.

The inspection was conducted on the airport under the provisions of the Administrative Code Chapter 450-9-1 for the following areas:

Aeronautics Administrative Code	Inspection Results	Corrective Action	Notes
Approach & Departure Paths Administrative Code 450-9-1-.12 (1)	<i>In Compliance</i>	N/A	There were several trees penetrating the FAA Part 77 surface on both runway ends.
Primary Surface Administrative Code 450-9-1-.12 (2)	<i>In Compliance</i>	N/A	N/A
Runway Safety Area Administrative Code 450-9-1-.12 (3)	<i>In Compliance</i> <i>Maintenance</i>	Remove any FOD or gravel in the Runway Safety Area.	A substantial amount of FOD was found in the Runway Safety Area near the threshold of Runway 4.
Airport Markings Administrative Code 450-9-1-.12 (4)	<i>In Compliance</i> <i>Maintenance</i>	The airport should consult with engineer about a remarking project in the future.	Runway and Taxiway Markings are in Fair condition. Apron Markings are in Poor condition.
Wind Direction Indicator Administrative Code 450-9-1-.12 (5)	<i>In Compliance</i>	N/A	N/A
Airport Lighting Administrative Code 450-9-1-.12 (6)	<i>In Compliance</i> <i>Maintenance</i>	Replace inoperable lights	3 Runway lights out 1 REIL out.
Runway, Taxiway and Apron Conditions Administrative Code 450-9-1-.12 (7)	<i>In Compliance</i>	N/A	Runway, Taxiway, and Apron are in Fair condition.
Fueling Area Requirements Administrative Code 450-9-1-.12 (8)	<i>In Compliance</i>	N/A	N/A
Prohibited Activities Administrative Code 450-9-1.16	<i>In Compliance</i>	N/A	N/A
Additional Items	<i>In Compliance</i>	N/A	N/A

License Status—**IN COMPLIANCE**

The corrective actions that may be prescribed in this inspection report do not relieve the airport sponsor from compliance with any other Federal, State or local laws, ordinances or regulations that may be applicable. It is the responsibility of the airport sponsor to be aware of and obey all Federal, State or local laws, ordinances or regulations that may have a bearing on the corrective actions that may be specified in this report.

Code of Alabama 23-1-357(a)... a person or municipality may not operate an airport, restricted landing area, or other navigation facility without a license issued by this Department.

July 13, 2023



**TALLADEGA MUNICIPAL AIRPORT
TALLADEGA, ALABAMA**

Talladega Municipal Airport

Approach and Departure Paths—RUNWAY 4

Administrative Code 450-9-1-.12(1)



There are no Obstructions to the ALDOT Approach/ Departure path. However, there are several penetrations to the FAA Part 77 Surface. See Appendix #2 for more information.

Talladega Municipal Airport

Approach and Departure Paths—RUNWAY 22

Administrative Code 450-9-1-.12(1)



There are no Obstructions to the ALDOT Approach/ Departure path. However, there are several penetrations to the FAA Part 77 Surface. Please see Appendix #3 for more information.

Talladega Municipal Airport

Primary Surface

Administrative Code 450-9-1-.12(2)



Primary Surface **meets** state licensing standards.

Talladega Municipal Airport

Runway Safety Area

Administrative Code 450-9-1-.12(3)



Runway Safety Area **meets** state licensing standards.

Maintenance: Substantial amount of FOD found in the Runway Safety Area. Please remove the gravel and FOD from the Runway Safety Area.

Talladega Municipal Airport

Airport Markings—Runway

Administrative Code 450-9-1-.12(4)



Runway markings are in **POOR** condition. The paint of the threshold markings are beginning to chip off. The airport should remark threshold markings in the near future in accordance with FAA AC 150/5340-1M.

Talladega Municipal Airport

Airport Markings—Taxiway

Administrative Code 450-9-1-.12(4)



Taxiway markings are generally in **FAIR** condition. The taxiway locations that have recently been remarked are in **EXCELLENT** condition.

Talladega Municipal Airport

Airport Markings—Apron

Administrative Code 450-9-1-.12(4)



The markings on the Apron are in **POOR** condition and are barely visible on the pavement surface. The airport should remark in accordance with FAA AC 150/5340-1M in the near future.

Talladega Municipal Airport

Wind Direction Indicator

Administrative Code 450-9-1-.12(5)



Wind direction indicator is in **GOOD** condition.

Talladega Municipal Airport

Airport Lighting

Administrative Code 450-9-1-.12(6)

An inspection of the lighting system had the following results:

Runway Lights	3 inoperable, 0 broken
Taxiway Lights	0 inoperable
Threshold Lights	0 inoperable
PAPI	0 inoperable
REIL	1 inoperable

MEETS State Licensing Standards for night-time operation.

Talladega Municipal Airport

Runway, Taxiway and Apron Conditions—RUNWAY

Administrative Code 450-9-1-.12(7)



Runway surface is in **FAIR** condition.

Talladega Municipal Airport

Runway, Taxiway and Apron Conditions—TAXIWAY

Administrative Code 450-9-1-.12(7)



The Taxiway surface is in **FAIR** condition.

Talladega Municipal Airport

Runway, Taxiway and Apron Conditions—APRON

Administrative Code 450-9-1-.12(7)



The Apron is in **FAIR** condition.

Talladega Municipal Airport

Fueling Area Requirements

Administrative Code 450-9-1-.12(8)



The fueling area meets the requirements established by the Alabama Department of Transportation. However, the State of Alabama Department of Agriculture may have additional requirements for fueling systems that were not considered during this inspection.

Talladega Municipal Airport

Prohibited Activities

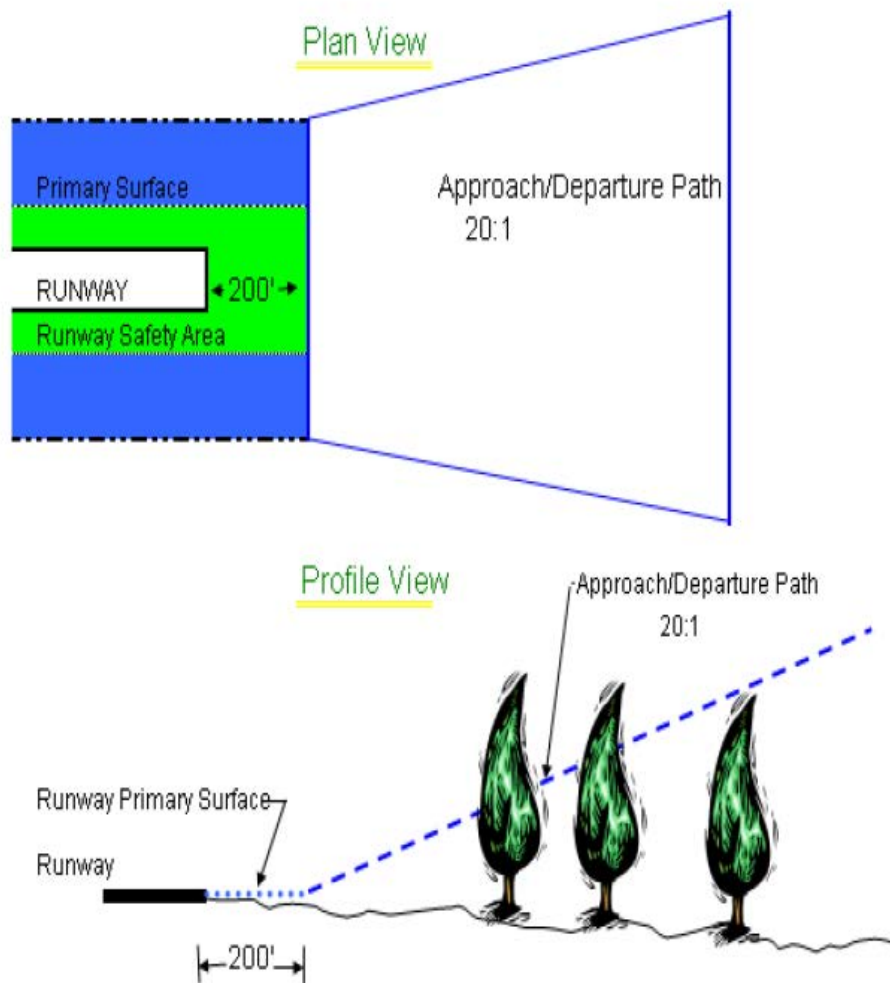
Administrative Code 450-9-1-.16



There were no prohibited activities noted during the time of inspection.

APPENDIX 1

Approach and Departure Path Dimensions			
Inner Width	Outer Width	Length	Acreage
250 Feet	450 Feet	1,000 Feet	8.04 Acres
Primary Surface Dimensions			
250 Feet Wide Centered Along Runway Centerline			
Extending 200 Feet Past the Runway End			
Runway Safety Area Dimensions			
120 Feet Wide Centered Along Runway Centerline			
Extending 200 Feet Past the Runway End			



APPENDIX #2

TALLADEGA MUNICIPAL AIRPORT TALLADEGA, AL 7/13/23 RUNWAY 04 OBSTRUCTION EVALUATION

1. Tree 74' Abv. RWY
1,075' From RWY End
547' Right of CL
11:1 Obst. Clrnc

2. Tree 72' Abv. RWY
787' From RWY End
566' Right of CL
8:1 Obst. Clrnc

3. Tree 88' Abv. RWY
1,447' From RWY End
576' Right of CL
14:1 Obst. Clrnc

4. Tree 88' Abv. RWY
2,126' From RWY End
506' Right of CL
21:1 Obst. Clrnc

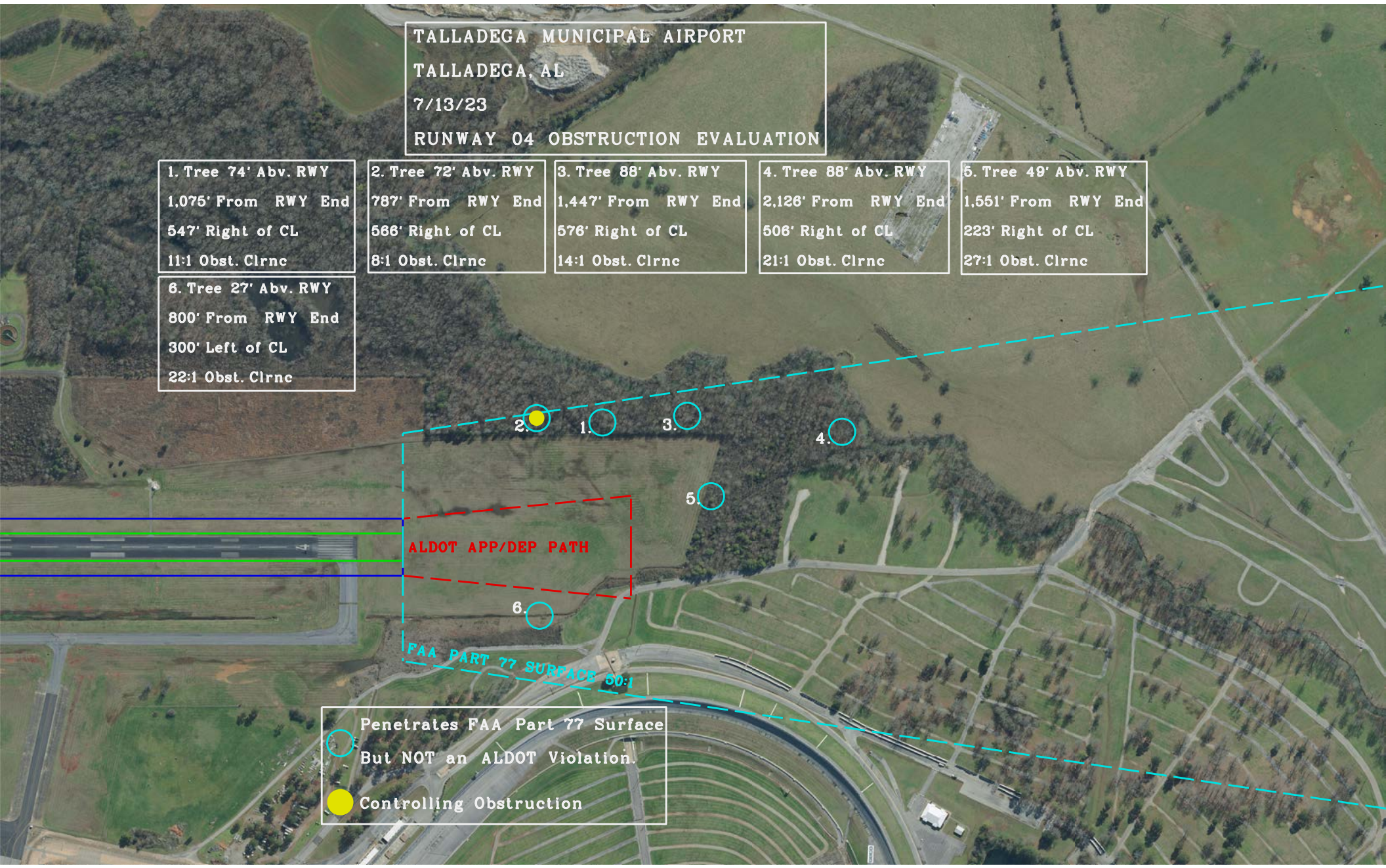
5. Tree 49' Abv. RWY
1,551' From RWY End
223' Right of CL
27:1 Obst. Clrnc

6. Tree 27' Abv. RWY
800' From RWY End
300' Left of CL
22:1 Obst. Clrnc

ALDOT APP/DEP PATH

FAA PART 77 SURFACE 50:1

Penetrates FAA Part 77 Surface
But NOT an ALDOT Violation.
Controlling Obstruction



APPENDIX #3

TALLADEGA MUNICIPAL AIRPORT
TALLADEGA, AL
7/13/23
RUNWAY 22 OBSTRUCTION EVALUATION

1. Tree 71' Abv. RWY 1,482' From RWY End 367' Right of CL 18:1 Obst. Clrnc	2. Tree 71' Abv. RWY 2,060' From RWY End 143' Left of CL 28:1 Obst. Clrnc	3. Tree 36' Abv. RWY 1,341' From RWY End 540' Left of CL 31:1 Obst. Clrnc
---	--	--

FAA PART 77 SURFACE 34:1

ALDOT APP/DEP PATH

○ Penetrates FAA Part 77 Surface
But NOT an ALDOT Violation.
● Controlling Obstruction

