



Kay Ivey
GOVERNOR

ALABAMA
DEPARTMENT OF TRANSPORTATION

AERONAUTICS BUREAU
1409 COLISEUM BOULEVARD
MONTGOMERY, ALABAMA 36110
PHONE (334) 242-6820
FAX (334) 353-6540
Internet: www.dot.state.al.us



John R. Cooper
TRANSPORTATION DIRECTOR

February 26, 2024

The Honorable Jason Reeves
Mayor, City of Troy
P.O. Box 549
Troy, AL 36081

Subject: Annual Inspection Report
Troy Municipal Airport

Dear Mayor Reeves:

An inspection of Troy Municipal Airport was conducted by personnel of the Alabama Department of Transportation, Aeronautics Bureau on January 29, 2024. The purpose of the inspection was to update the information currently on file regarding the airport and to ascertain compliance with the rules and regulations of the Alabama Department of Transportation governing licensed public-use airports within the State of Alabama.

Attached you will find a copy of the Annual Inspection Report. As noted in the report, the airport meets all requirements for the issuance of an operating license.

There was maintenance noted in the report that should be addressed as soon as possible. Specifically, Runway 14/32 and its corresponding taxiway are in poor condition and pavement failure will be imminent if not addressed.

If you should have any questions concerning the inspection or corrective actions, please do not hesitate to contact Mr. Caleb Nall with the Aeronautics Bureau at (334) 312-6748.

Sincerely,

Frank Farmer
Chief, Aeronautics Bureau

Copy: Mr. Rans Black, FAA/ADO
Mr. Luke Flowers, FAA/ADO
Mrs. Melissa Sanders, Troy Municipal Airport
Mrs. Michelle Conway, Goodwyn Mills and Cawood.

January 29, 2024



ANNUAL INSPECTION REPORT



TROY MUNICIPAL AIRPORT

TROY, ALABAMA

Alabama Department of Transportation Aeronautics Bureau—Annual Airport Inspection Report

In accordance with the provisions of the Code of Alabama 23-1-357, an inspection of the **Troy Municipal Airport** was conducted by **Mr. Caleb Nall and Mr. Noah Sowell** with the Alabama Department of Transportation Aeronautics Bureau on **January 29, 2024**.

The inspection was conducted on the airport under the provisions of the Administrative Code Chapter 450-9-1 for the following areas:

Aeronautics Administrative Code	Inspection Results	Corrective Action	Notes
Approach & Departure Paths Administrative Code 450-9-1-.12 (1)	<i>In Compliance</i> <i>Maintenance</i>	Remove trees in the FAA Part 77 Approach Path.	Trees were observed in the FAA Part 77 Approach Path. See Appendices 2, 3 and 4 for more information.
Primary Surface Administrative Code 450-9-1-.12 (2)	<i>In Compliance</i>	N/A	N/A
Runway Safety Area Administrative Code 450-9-1-.12 (3)	<i>In Compliance</i>	N/A	N/A
Airport Markings Administrative Code 450-9-1-.12 (4)	<i>In Compliance</i> <i>Maintenance</i>	Clear all vegetation from runway 14/32.	There are certain portions of the runway that have grass growing through the pavement.
Wind Direction Indicator Administrative Code 450-9-1-.12 (5)	<i>In Compliance</i>	N/A	N/A
Airport Lighting Administrative Code 450-9-1-.12 (6)	<i>In Compliance</i> <i>Maintenance</i>	The non-operational light needs to be replaced.	There was one threshold light knocked over off of Runway End 32. See page 10.
Runway, Taxiway and Apron Conditions Administrative Code 450-9-1-.12 (7)	<i>In Compliance</i> <i>Maintenance</i>	Clear all vegetation from taxiways.	There are certain portions of the taxiway that have grass growing through the pavement.
Fueling Area Requirements Administrative Code 450-9-1-.12 (8)	<i>In Compliance</i> <i>Maintenance</i>	Repair leaking Jet-A fuel truck.	Jet-A fuel truck is leaking.
Prohibited Activities Administrative Code 450-9-1-.16	<i>In Compliance</i> <i>Maintenance</i>	Ensure all points of access to the airfield are secured.	Access to airfield is not secure.
Additional Items Administrative Code 450-9-1-.16	N/A	N/A	N/A

License Status—**COMPLIANCE**

The corrective actions that may be prescribed in this inspection report do not relieve the airport sponsor from compliance with any other Federal, State or local laws, ordinances or regulations that may be applicable. It is the responsibility of the airport sponsor to be aware of and obey all Federal, State or local laws, ordinances or regulations that may have a bearing on the corrective actions that may be specified in this report.

Code of Alabama 23-1-357(a)... a person or municipality may not operate an airport, restricted landing area, or other navigation facility without a license issued by this Department.

Troy Municipal Airport

Approach and Departure Paths—RUNWAY 7

Administrative Code 450-9-1-.12(1)



No obstructions were located in the ALDOT Approach/
Departure Path of Runway 7.

Troy Municipal Airport

Approach and Departure Paths—RUNWAY 25

Administrative Code 450-9-1-.12(1)



There were no obstructions in the ALDOT Approach and Departure Path. The trees circled in blue penetrate the FAA Part 77 Approach Path. See Appendix 3 for more information.

Troy Municipal Airport

Approach and Departure Paths—RUNWAY 14

Administrative Code 450-9-1-.12(1)



There were no obstructions in the ALDOT Approach and Departure Path. The trees circled in blue penetrate the FAA Part 77 Approach Path. See Appendix 4 for more information.

Troy Municipal Airport

Approach and Departure Paths—RUNWAY 32

Administrative Code 450-9-1-.12(1)



There were no obstructions in the ALDOT Approach and Departure Path. The trees circled in blue penetrate the FAA Part 77 Approach Path. See Appendix 5 for more information.

Troy Municipal Airport

Primary Surface

Administrative Code 450-9-1-.12(2)



Primary Surface **MEETS** state licensing standards.

Troy Municipal Airport

Runway Safety Area

Administrative Code 450-9-1-.12(3)



Runway Safety Area **MEETS** state licensing standards.

Troy Municipal Airport

Airport Markings—Runway 7/25

Administrative Code 450-9-1-.12(4)



Runway markings are in **GOOD** condition.

Troy Municipal Airport

Airport Markings—Runway 14/32

Administrative Code 450-9-1-.12(4)



Runway markings are in **POOR** condition.

Maintenance: Runway should be cleaned of all vegetation.

Troy Municipal Airport

Airport Markings—Taxiway

Administrative Code 450-9-1-.12(4)



Taxiway markings are in **FAIR** condition.

Troy Municipal Airport

Airport Markings—Apron

Administrative Code 450-9-1-.12(4)



Apron markings are in **FAIR** condition.

Troy Municipal Airport

Wind Direction Indicator

Administrative Code 450-9-1-.12(5)



Wind direction indicator is in **FAIR** condition.

Troy Municipal Airport

Airport Lighting

Administrative Code 450-9-1-.12(6)

An inspection of the lighting system had the following results:

Runway Lights	0 inoperable
Taxiway Lights	0 inoperable
Threshold Lights	1 inoperable
PAPI	0 inoperable
REIL	0 inoperable

MEETS State Licensing Standards for night-time operation.

Troy Municipal Airport

Runway, Taxiway and Apron Conditions—RUNWAY 7/25

Administrative Code 450-9-1-.12(7)



Runway surface is in **GOOD** condition.

Troy Municipal Airport

Runway, Taxiway and Apron Conditions—RUNWAY 14/32

Administrative Code 450-9-1-.12(7)



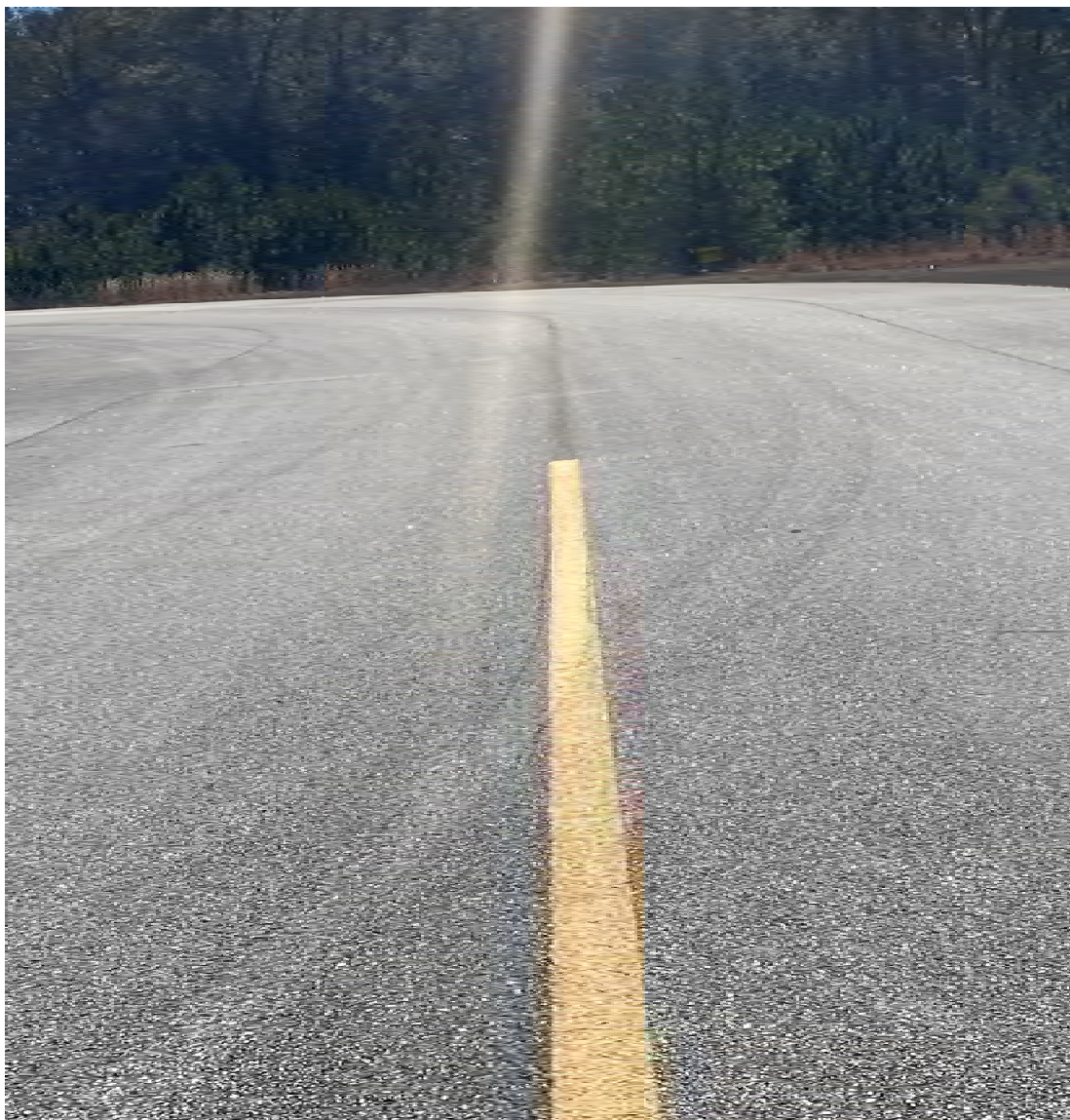
Runway surface is in **POOR** condition.

Maintenance: The runway is experiencing widespread cracking and vegetation growth and should be addressed as soon as possible.

Troy Municipal Airport

Runway, Taxiway and Apron Conditions—TAXIWAY 7/25

Administrative Code 450-9-1-.12(7)



Taxiway surface is in **GOOD** condition.

Troy Municipal Airport

Runway, Taxiway and Apron Conditions—TAXIWAY 14/32

Administrative Code 450-9-1-.12(7)



Taxiway surface is in **POOR** condition.

Maintenance: The taxiway is experiencing widespread cracking and vegetation and needs to be addressed as soon as possible.

Troy Municipal Airport

Runway, Taxiway and Apron Conditions—APRON

Administrative Code 450-9-1-.12(7)



Apron surface is in **FAIR** condition.

Troy Municipal Airport

Fueling Area Requirements

Administrative Code 450-9-1-.12(8)



Fueling area **MEETS** state licensing standards. However, the State of Alabama Department of Agriculture may have additional requirements for fueling systems that were not considered during this inspection.

Maintenance: There is Jet-A fuel leaking from one of the refueling trucks. Please ensure that there are no fuel leaks.

Troy Municipal Airport

Prohibited Activities

Administrative Code 450-9-1-.16

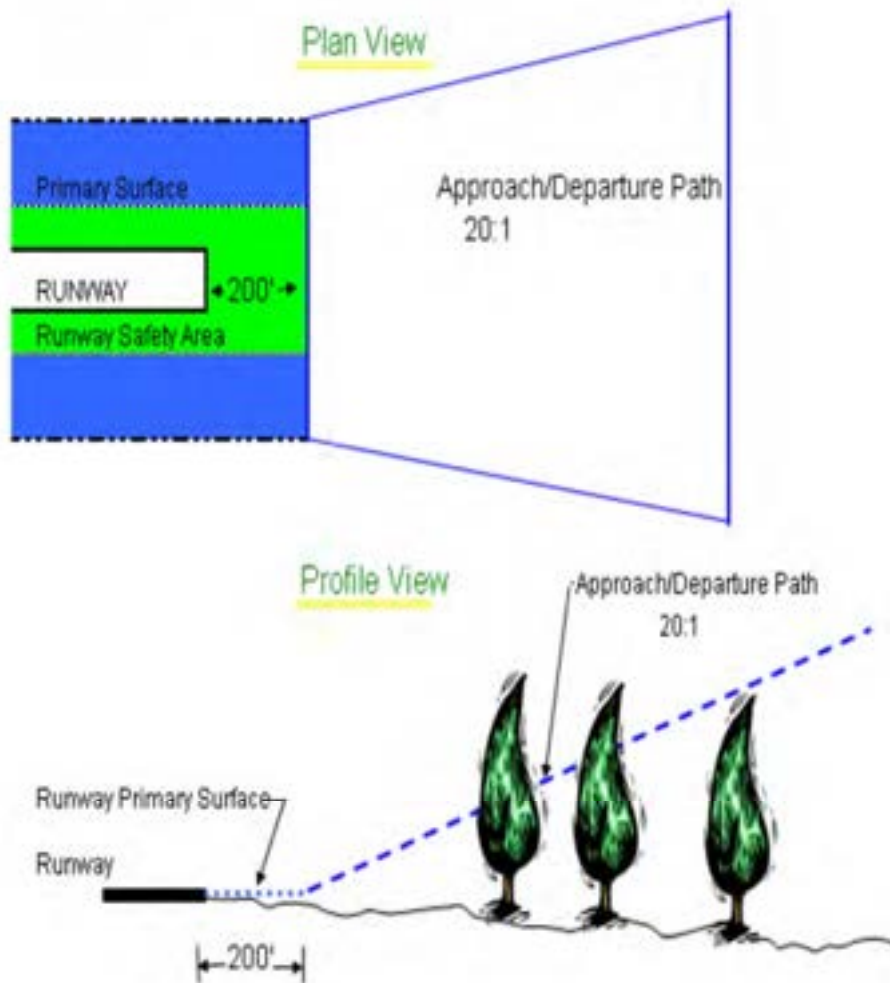


No prohibited activities were observed during this inspection.

Maintenance: Ensure all points of access to the airfield are controlled and secured.

APPENDIX 1

Approach and Departure Path Dimensions			
Inner Width	Outer Width	Length	Acreage
250 Feet	450 Feet	1,000 Feet	8.04 Acres
Primary Surface Dimensions			
250 Feet Wide Centered Along Runway Centerline			
Extending 200 Feet Past the Runway End			
Runway Safety Area Dimensions			
120 Feet Wide Centered Along Runway Centerline			
Extending 200 Feet Past the Runway End			



Appendix 2

Troy Municipal Airport
Troy, AL
Runway 7
Obstruction Evaluation
January 29, 2024

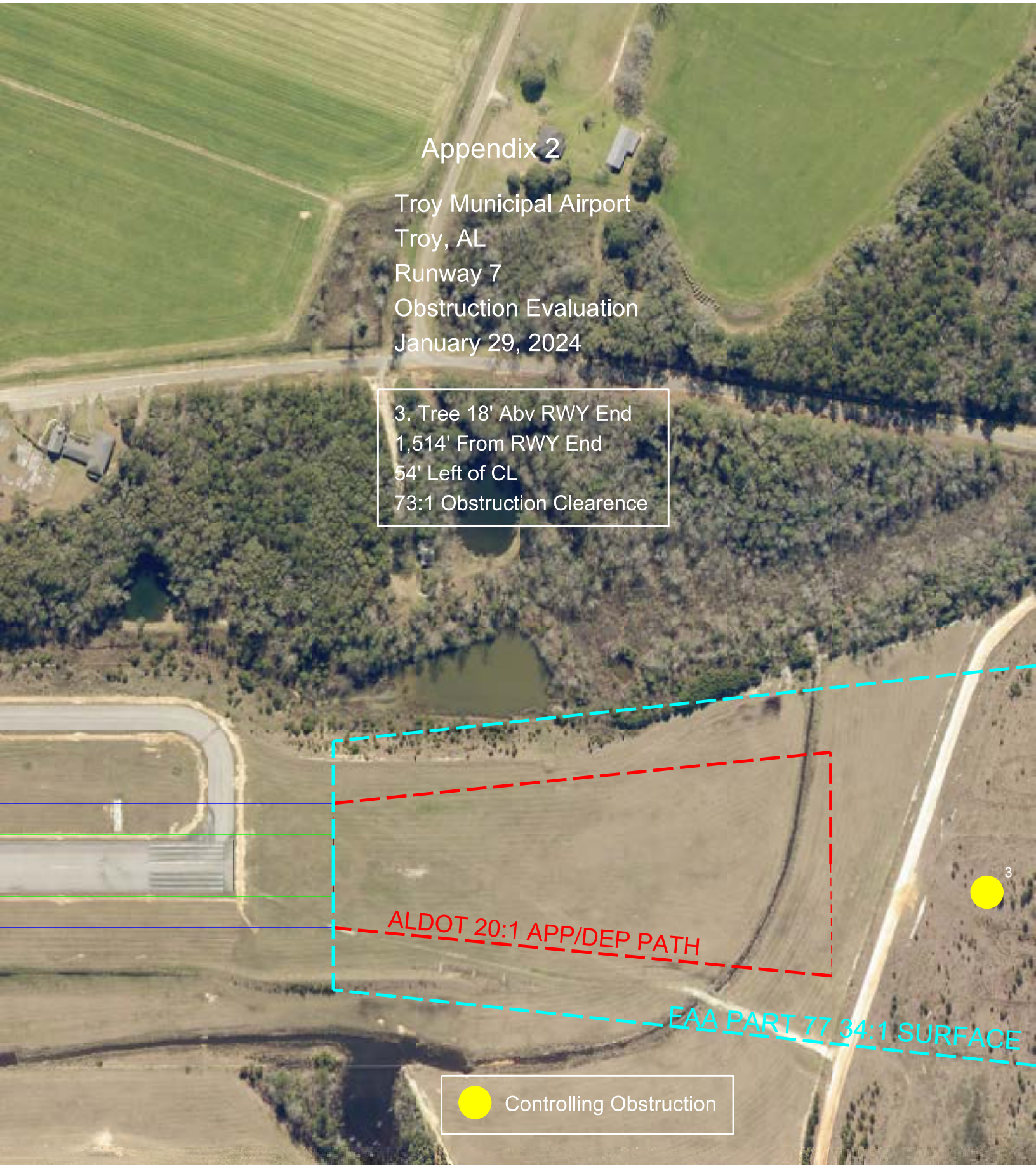
3. Tree 18' Abv RWY End
1,514' From RWY End
54' Left of CL
73:1 Obstruction Clearance

ALDOT 20:1 APP/DEP PATH

EAA PART 77 34:1 SURFACE

● Controlling Obstruction

3



Appendix 3

Troy Municipal Airport

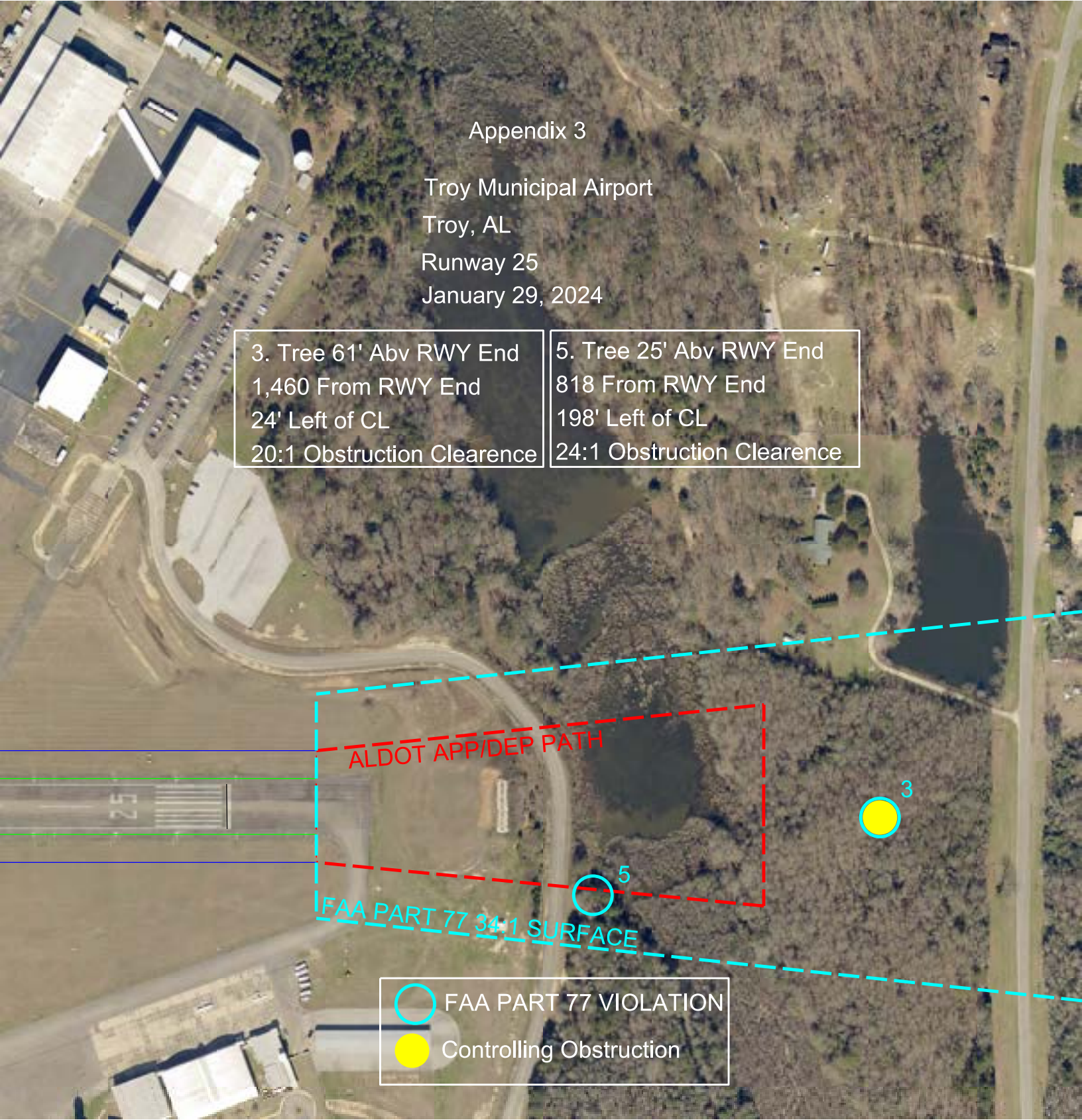
Troy, AL



Runway 25

January 29, 2024

3. Tree 61' Abv RWY End
1,460 From RWY End
24' Left of CL
20:1 Obstruction Clearance

5. Tree 25' Abv RWY End
818 From RWY End
198' Left of CL
24:1 Obstruction Clearance



-  FAA PART 77 VIOLATION
-  Controlling Obstruction

Troy Municipal Airport
Troy, AL
Runway 14
January 29, 2024

1. Tree 89' Abv RWY
947' From RWY End
357' Right of CL
8:1 Obst Clnc

2. Tree 112' Abv RWY
1713' From RWY End
155' Left of CL
13:1 Obst Clnc

3. Tree 129' Abv RWY
1973' From RWY End
501' Left of CL
13:1 Obst Clnc

ALDOT APP/DEP PATH

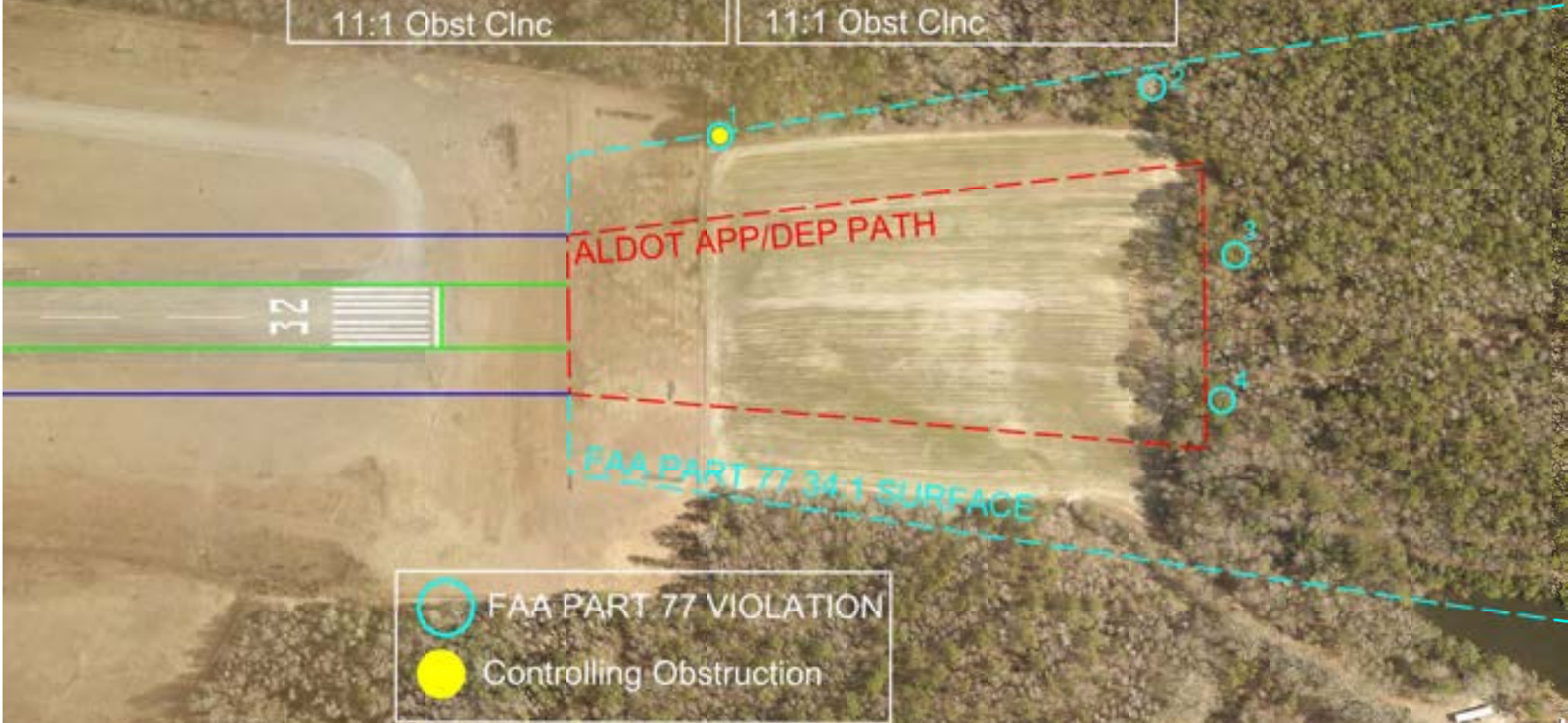
FAA PART 77 30:1 SURFACE

○ FAA PART 77 VIOLATION
○ Controlling Obstruction



Appendix 5
Troy Municipal Airport
Troy, AL
Runway 32
January 29, 2024

- | | |
|--|--|
| 1. Tree 71' Abv RWY
437' From RWY End
285' Right of CL
3:1 Obst Clnc | 2. Tree 99' Abv RWY
1118' From RWY End
361' Right of CL
9:1 Obst Clnc |
| 3. Tree 92' Abv RWY
1247' From RWY End
97' Right of CL
11:1 Obst Clnc | 4. Tree 87' Abv RWY
1227' From RWY End
132' Left of CL
11:1 Obst Clnc |



○ FAA PART 77 VIOLATION
● Controlling Obstruction