



Kay Ivey
GOVERNOR

ALABAMA
DEPARTMENT OF TRANSPORTATION

AERONAUTICS BUREAU
1409 COLISEUM BOULEVARD
MONTGOMERY, ALABAMA 36110

PHONE (334) 242-6820
FAX (334) 353-6540
Internet: www.dot.state.al.us



John R. Cooper
TRANSPORTATION DIRECTOR

June 13, 2023

The Honorable Jerry Willis, Mayor
City of Wetumpka
P.O. Box 1180
Wetumpka, Alabama 36092

Subject: Annual Inspection Report
Wetumpka Municipal Airport

Dear Mayor Willis:

An inspection of the Wetumpka Municipal Airport was conducted by personnel of the Alabama Department of Transportation Aeronautics Bureau on May 12, 2023. The purpose of the inspection was to update the information currently on file regarding the airport and to ascertain compliance with the rules and regulations of the Alabama Department of Transportation governing licensed public-use airports within the State of Alabama.

Attached you will find a copy of the Annual Inspection Report. As noted in the report, the airport ***does not meet*** the requirements for the issuance of an operating license. Once the violations have been addressed, please contact this office to schedule a re-inspection.

If you should have any questions concerning the inspection or corrective actions, please do not hesitate to contact Mr. Bennett Head with the Aeronautics Bureau at (334) 242-6831.

Sincerely,

Frank Farmer
Chief, Aeronautics Bureau

Copy: Mr. Rans Black, FAA/ADO
Ms. Inez Williams, FAA/ADO
Mr. Jordan Russell, GMC
Ms. Lynn Weldon, City of Wetumpka
Ms. Julie Creel, City of Wetumpka

Alabama Department of Transportation Aeronautics Bureau—Annual Airport Inspection Report

In accordance with the provisions of the Code of Alabama 23-1-357, an inspection of the **Wetumpka Municipal Airport** was conducted by **Mr. Bennett Head** with the Alabama Department of Transportation Aeronautics Bureau on **May 12, 2023**.

The inspection was conducted on the airport under the provisions of the Administrative Code Chapter 450-9-1 for the following areas:

Aeronautics Administrative Code	Inspection Results	Corrective Action	Notes
Approach & Departure Paths Administrative Code 450-9-1-.12 (1)	<i>In Compliance</i>	N/A	Please note that there were penetrations to the FAA Part 77 Surface.
Primary Surface Administrative Code 450-9-1-.12 (2)	<i>VIOLATION</i>	Remove tree growing in primary surface.	A tree is growing inside the runway marker on Runway 36.
Runway Safety Area Administrative Code 450-9-1-.12 (3)	<i>In Compliance</i>	N/A	N/A
Airport Markings Administrative Code 450-9-1-.12 (4)	<i>In Compliance</i> <i>Maintenance</i>	Clean Runway markings. If markings are unable to be cleaned remark in accordance with FAA AC 150/5340-1M.	Runway Markings are in Fair condition.
Wind Direction Indicator Administrative Code 450-9-1-.12 (5)	<i>In Compliance</i>	N/A	N/A
Airport Lighting Administrative Code 450-9-1-.12 (6)	<i>In Compliance</i> <i>Maintenance</i>	N/A	Two runway lights, three taxiway lights, and one REIL were found inoperable.
Runway, Taxiway and Apron Conditions Administrative Code 450-9-1-.12 (7)	<i>VIOLATION</i>	On the 36 runway end move back the displacement towards the runway end to meet the adequate length of 2,000 feet. Fill in ruts and holes and remove FOD from taxiway between hangars.	Runway 18/36 was found to only be 1,873 feet in length. Runway 36 also has deep ruts from vehicles and holes in the runway. Taxilane pavement between T-Hangers are generally in good condition with one portion in poor condition.
Fueling Area Requirements Administrative Code 450-9-1-.12 (8)	<i>In Compliance</i>	N/A	N/A
Prohibited Activities Administrative Code 450-9-1-.16	<i>In Compliance</i>	N/A	N/A
Additional Items	<i>In Compliance</i> <i>Maintenance</i>	Remove cones and stakes that were found if they serve no purpose to the airport.	Water was found near hangers and it should be noted as it could damage pavement over time if the water cannot drain properly.

License Status—**SUSPENDED**

The corrective actions that may be prescribed in this inspection report do not relieve the airport sponsor from compliance with any other Federal, State or local laws, ordinances or regulations that may be applicable. It is the responsibility of the airport sponsor to be aware of and obey all Federal, State or local laws, ordinances or regulations that may have a bearing on the corrective actions that may be specified in this report.

Code of Alabama 23-1-357(a)... a person or municipality may not operate an airport, restricted landing area, or other navigation facility without a license issued by this Department.

May 12, 2023



ANNUAL INSPECTION REPORT



**WETUMPKA MUNICIPAL AIRPORT
WETUMPKA, ALABAMA**

Wetumpka Municipal Airport

Approach and Departure Paths—RUNWAY 09

Administrative Code 450-9-1-.12(1)



No obstructions located in the ALDOT 20:1 Approach/Departure Path of Runway 27. However, there are two trees that penetrate the FAA Part 77 Surface. Please see Appendix #2 for more information.

Wetumpka Municipal Airport

Approach and Departure Paths—RUNWAY 18

Administrative Code 450-9-1-.12(1)



There are no obstructions to the ALDOT 20:1 Approach/Departure path. However, there were FAA part 77 penetrations found. Please see Appendix #3 for more information.

Wetumpka Municipal Airport

Approach and Departure Paths—RUNWAY 27

Administrative Code 450-9-1-.12(1)



There are no obstructions to the ALDOT 20:1 Approach/Departure path. However, there are trees that penetrate the FAA Part 77 Surface. Please see Appendix #4 for more information.

Wetumpka Municipal Airport

Approach and Departure Paths—RUNWAY 36

Administrative Code 450-9-1-.12(1)



There are no obstructions to the ALDOT 20:1 Approach/Departure path. However, there was an penetration found in the FAA Part 77 Surface. Please see Appendix #5 for more information.

Wetumpka Municipal Airport

Primary Surface

Administrative Code 450-9-1-.12(2)



VIOLATION: The Primary Surface of Runway 18/36 **does not** meet state licensing standards. A tree growing in the primary surface on Runway 36 needs to be removed. The primary surface of Runway 9/27 meets state licensing standards.

Wetumpka Municipal Airport

Runway Safety Area

Administrative Code 450-9-1-.12(3)



The Runway Safety Areas of Runway 9/27 and Runway 18/36 **meet** state licensing standards.

Wetumpka Municipal Airport

Airport Markings—Runway

Administrative Code 450-9-1-.12(4)



Runway markings are in **FAIR** condition.

Maintenance: Clean airport markings. If markings are unable to be cleaned, re-mark in accordance with FAA AC 150/5340-1M. The Runway markers for Runway 18/36 are in **GOOD** condition.

Wetumpka Municipal Airport

Airport Markings—Taxiway

Administrative Code 450-9-1-.12(4)



Taxiway markings are in **FAIR** condition.

Wetumpka Municipal Airport

Airport Markings—Apron

Administrative Code 450-9-1-.12(4)



Apron markings are in **FAIR** condition.

Wetumpka Municipal Airport

Wind Direction Indicator

Administrative Code 450-9-1-.12(5)



Wind direction indicator is in **GOOD** condition.

Wetumpka Municipal Airport

Airport Lighting

Administrative Code 450-9-1-.12(6)

An inspection of the lighting system had the following results:

Runway Lights	2 inoperable
Taxiway Lights	3 inoperable
Threshold Lights	0 inoperable
PAPI	0 inoperable
REIL	1 inoperable

Runway 9/27 **MEETS** State Licensing Standards for night-time operation. Runway 18/36 is not lit and is used for Day-time VFR operations only.

Wetumpka Municipal Airport

Runway, Taxiway and Apron Conditions—RUNWAY 9/27

Administrative Code 450-9-1-.12(7)



Runway surface is in **FAIR** condition.

Wetumpka Municipal Airport

Runway, Taxiway and Apron Conditions—RUNWAY 18/36

Administrative Code 450-9-1-.12(7)



VIOLATION: Runway surface is in **POOR** condition and does not meet state licensing standards.

It should be noted that there are several holes and deep ruts caused by vehicles on Runway 36.

Wetumpka Municipal Airport

Runway, Taxiway and Apron Conditions—RUNWAY 18/36

Administrative Code 450-9-1-.12(7)



VIOLATION: During the inspection, Runway 18/36 was found to be 1,873 feet in length. The minimum runway length for public use turf runways is 2,000 feet.

May 12, 2023

Wetumpka Municipal Airport

Runway, Taxiway and Apron Conditions—TAXIWAY

Administrative Code 450-9-1-.12(7)



Taxiway surface is in **FAIR** condition.

Wetumpka Municipal Airport

Runway, Taxiway and Apron Conditions—TAXILANES

Administrative Code 450-9-1-.12(7)



Taxiway pavement between T– Hangars is generally in **GOOD** condition, however there is still a portion of the pavement in **POOR** condition. Additionally, water was found near hangars that is not draining properly. This should be noted as it could damage pavement over time without proper drainage.

Required Maintenance: Remove FOD from taxiway between hangars.

Wetumpka Municipal Airport

Runway, Taxiway and Apron Conditions—APRON

Administrative Code 450-9-1-.12(7)



Apron surface is in **FAIR** condition. Apron is also experiencing moderate cracking.

Wetumpka Municipal Airport

Fueling Area Requirements

Administrative Code 450-9-1-.12(8)



The fueling area meets the requirements established by the Alabama Department of Transportation. However, the State of Alabama Department of Agriculture may have additional requirements for fueling systems that were not considered during this inspection.

Wetumpka Municipal Airport

Prohibited Activities

Administrative Code 450-9-1-.16



No prohibited activities were observed during this inspection.

Wetumpka Municipal Airport

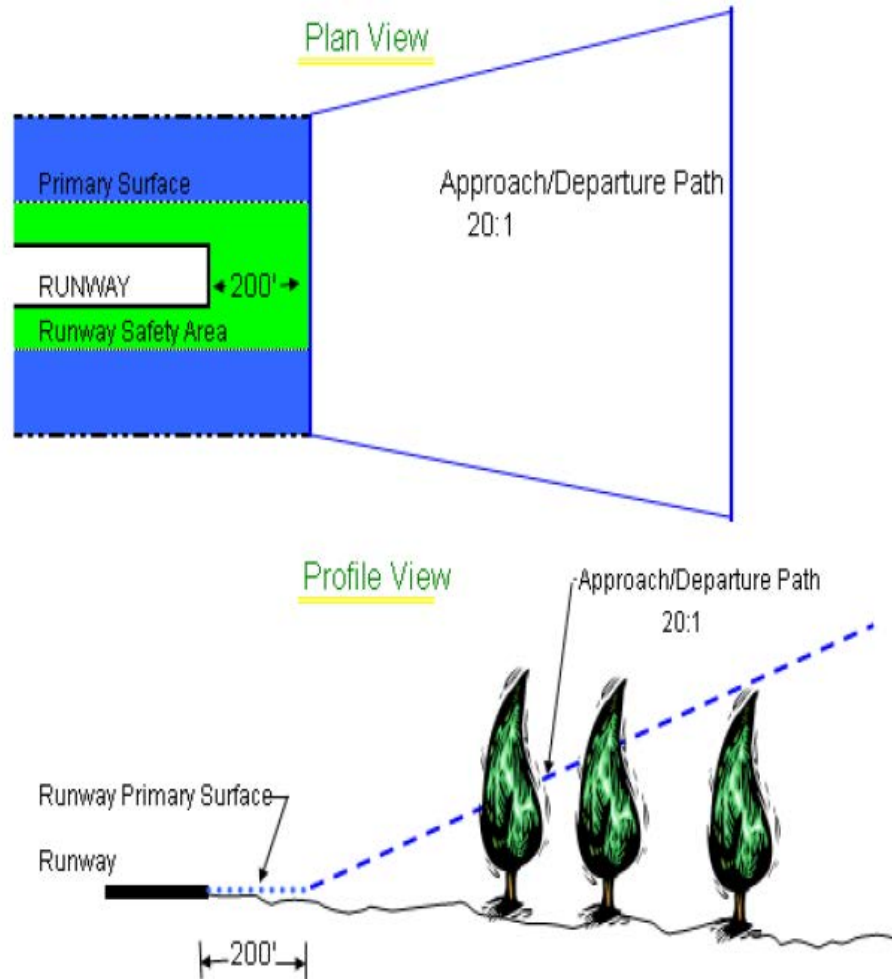
Additional Items



Maintenance: During the Inspection cones and stakes were found in the Runway Safety Area and taxi lanes. Please remove these objects if they do not serve a purpose.

APPENDIX 1

Approach and Departure Path Dimensions			
Inner Width	Outer Width	Length	Acreage
250 Feet	450 Feet	1,000 Feet	8.04 Acres
Primary Surface Dimensions			
250 Feet Wide Centered Along Runway Centerline			
Extending 200 Feet Past the Runway End			
Runway Safety Area Dimensions			
120 Feet Wide Centered Along Runway Centerline			
Extending 200 Feet Past the Runway End			

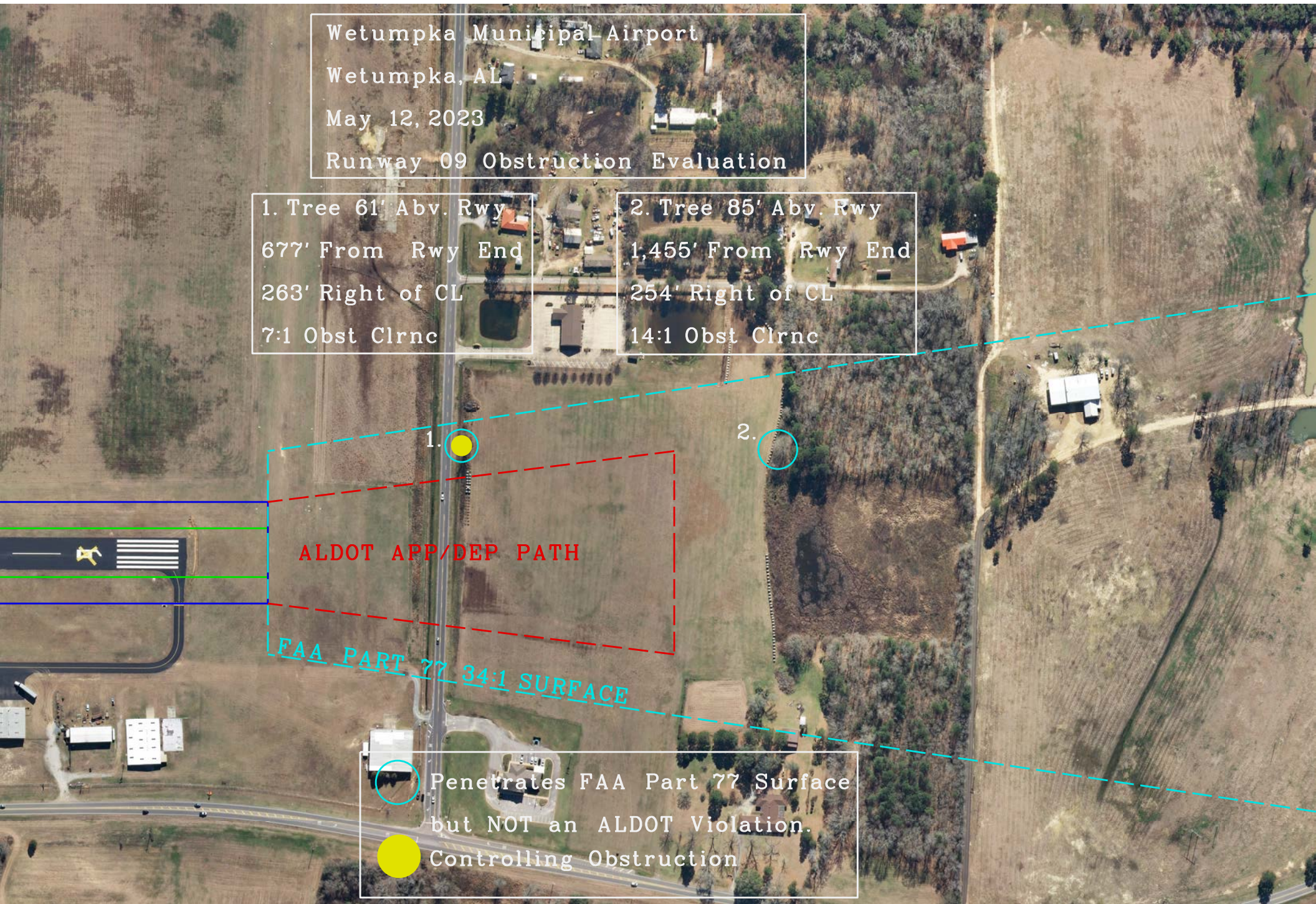


APPENDIX #2

Wetumpka Municipal Airport
Wetumpka, AL
May 12, 2023
Runway 09 Obstruction Evaluation

1. Tree 61' Abv. Rwy
677' From Rwy End
263' Right of CL
7:1 Obst Clrnc

2. Tree 85' Abv. Rwy
1,455' From Rwy End
254' Right of CL
14:1 Obst Clrnc



ALDOT APP/DEP PATH

FAA PART 77 34:1 SURFACE

Penetrates FAA Part 77 Surface
but NOT an ALDOT Violation.
Controlling Obstruction

APPENDIX #3

WETUMPKA MUNICIPAL AIRPORT
WETUMPKA, AL
May 12, 2023
Runway 18 Obstruction Evaluation

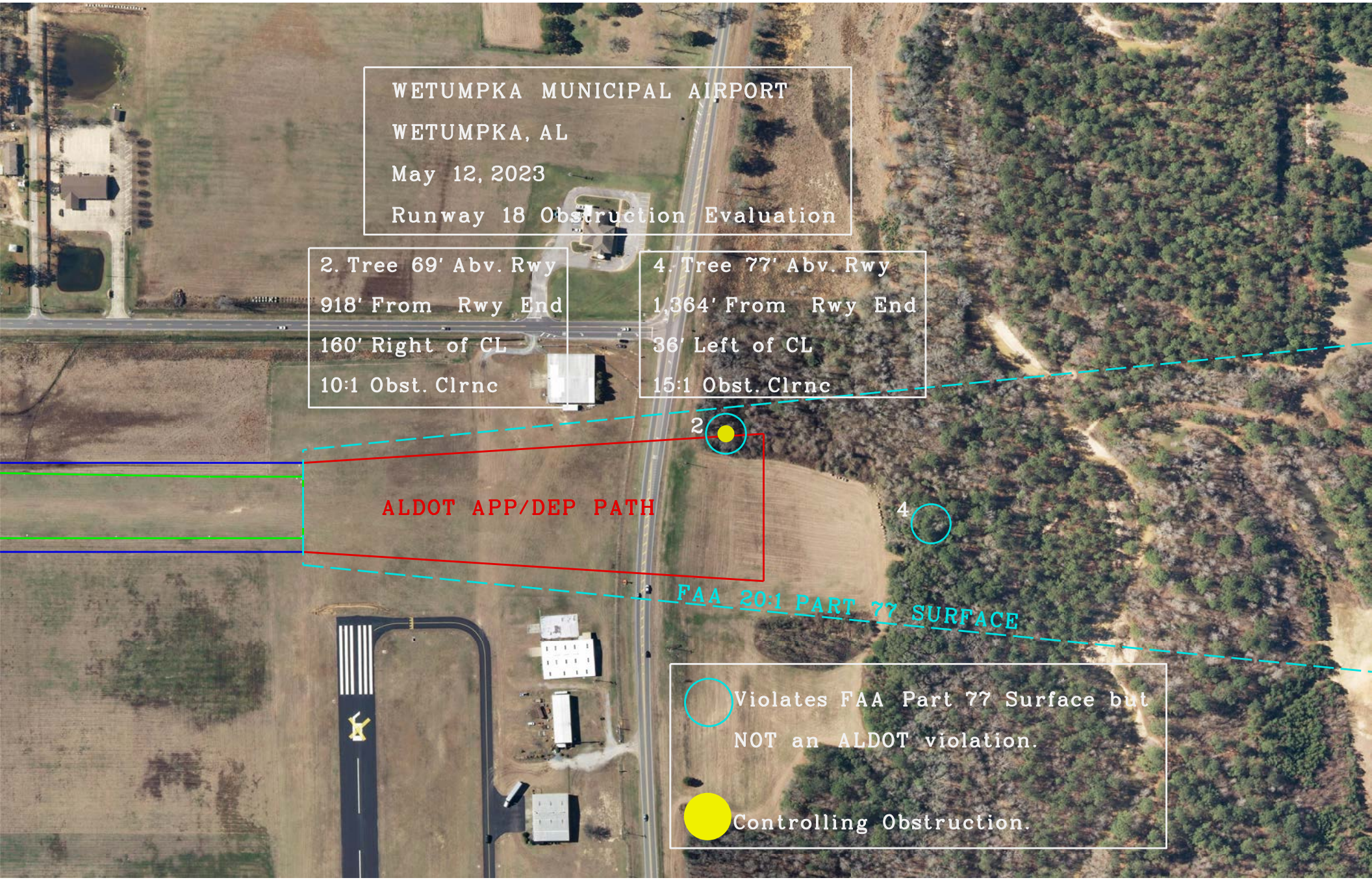
2. Tree 69' Abv. Rwy
918' From Rwy End
160' Right of CL
10:1 Obst. Clrnc

4. Tree 77' Abv. Rwy
1,364' From Rwy End
36' Left of CL
15:1 Obst. Clrnc

ALDOT APP/DEP PATH

FAA 20:1 PART 77 SURFACE

○ Violates FAA Part 77 Surface but NOT an ALDOT violation.
● Controlling Obstruction.



APPENDIX #4

Wetumpka Municipal Airport
Wetumpka, AL
May 12, 2023
Runway 27 Obstruction Evaluation

2. Tree 73' Abv. Rwy
816' From Rwy End
317' Right of CL
8:1 Obst Clrnc.

5. Tree 71' Abv. Rwy
1214' From Rwy End
385' Left of CL
14:1 Obst Clrnc.

ALDOT APP/DEP PATH

FAA PART 77 34-1 SURFACE



Violates FAA Part 77 Surface, but NOT an ALDOT Violation.



Controlling Obstruction



WETUMPKA MUNICIPAL AIRPORT
WETUMPKA, AL
May 12, 2023
Runway 36 Obstruction Evaluation

2. Tree 76' Abv. Rwy
1,353' From DCSP THR
107' Right of CL
15:1 Obst Clrnc.

FAA 20:1 Part 77 Surface

ALDOT APP/DEP PATH

2

Violates FAA Part 77 Surface but
NOT an ALDOT violation.

Controlling Obstruction.

