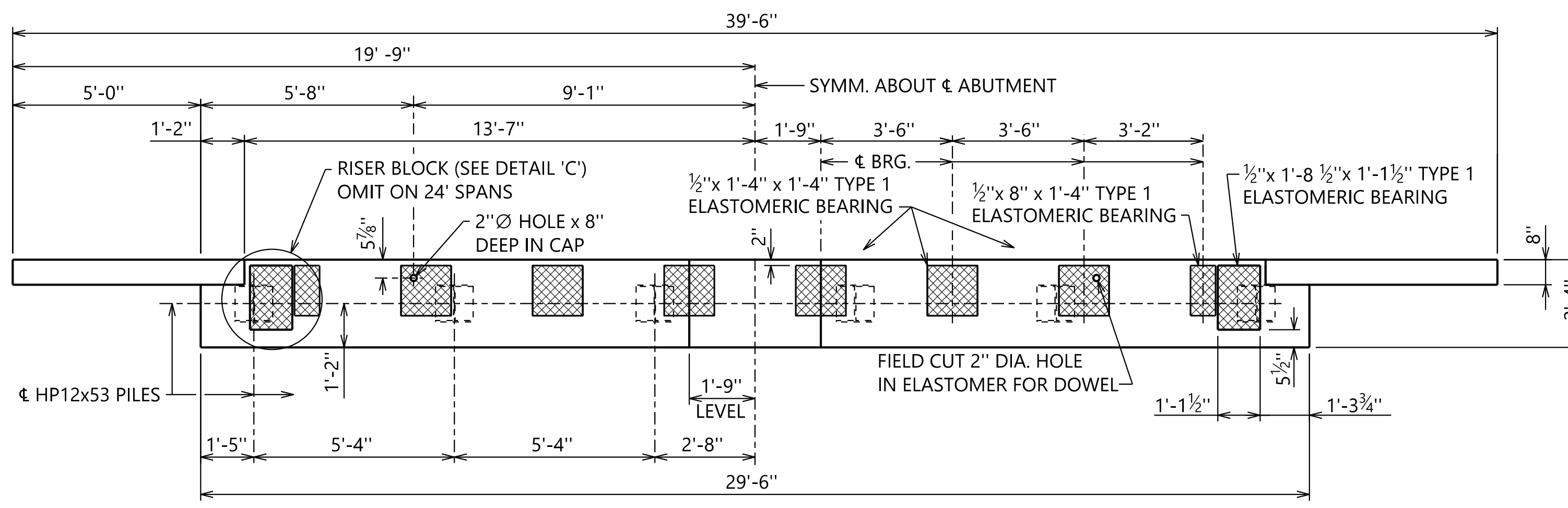
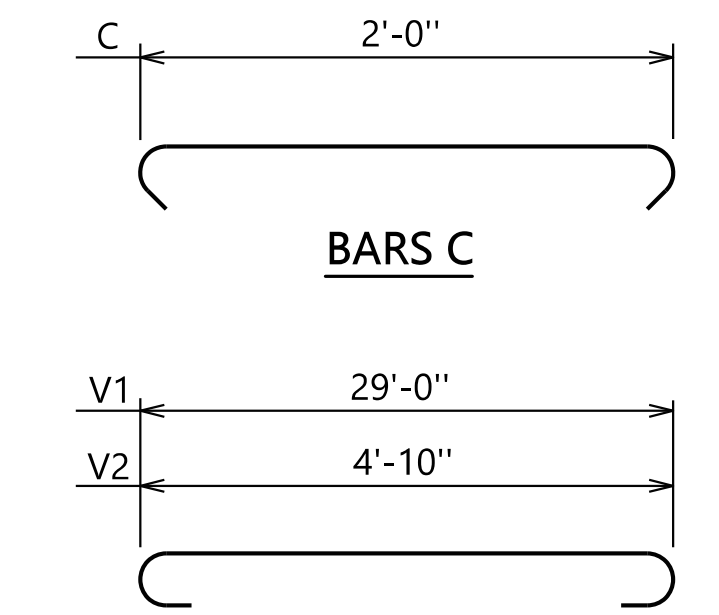


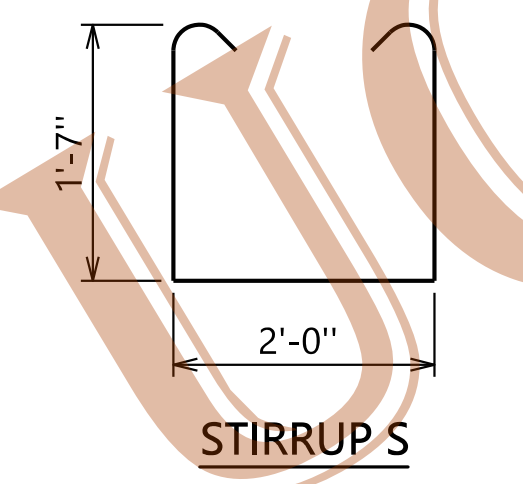
2'  
1"  
0



**PLAN**  
SCALE: 3/8" = 1'-0"

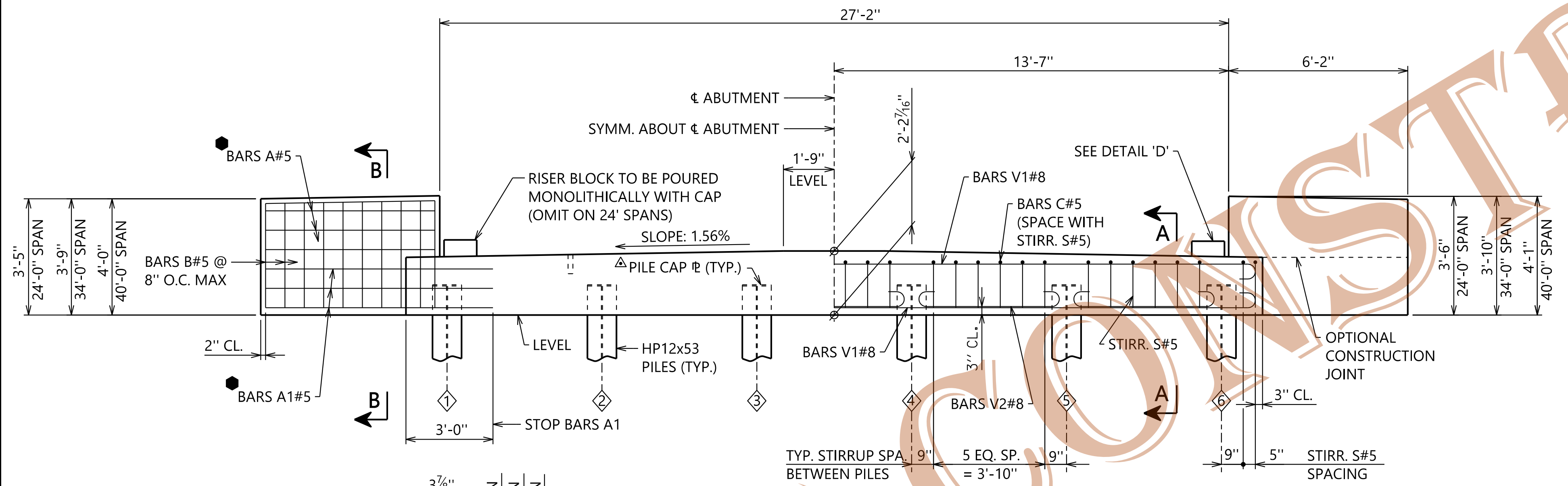


**BARS TYPE V**

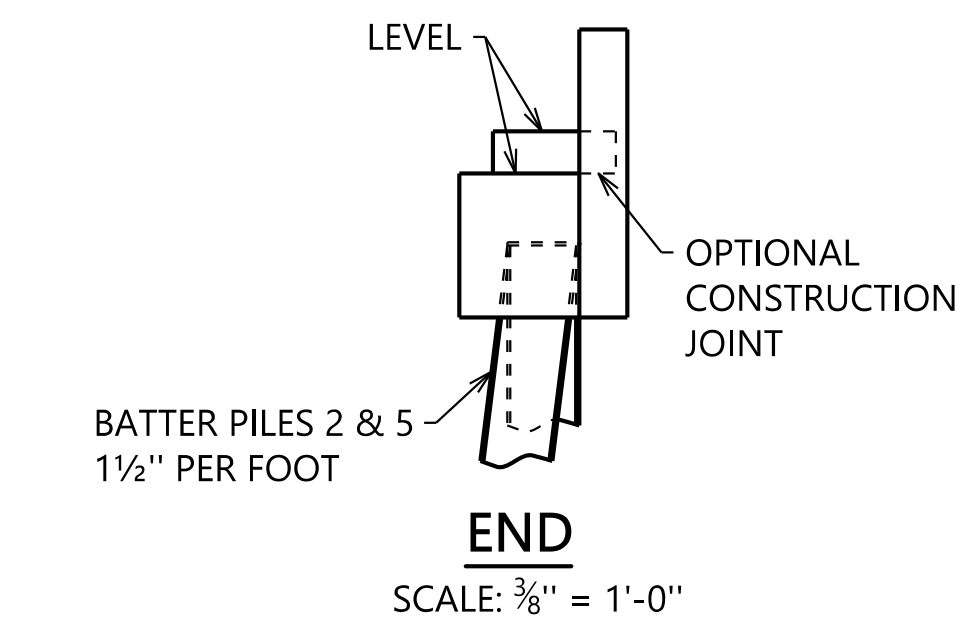


**STIRRUP S**

- NOTES**
- FOR PILE CAP PLATE DETAIL AND PILE SPLICE NOTE SEE BRIDGE SPECIAL PROJECT DRAWING SBD-1.
  - FABRICATE ALL BARS B#5 TO SAME LENGTH AND MAINTAIN 2" CONCRETE COVER AT TOP OF BARS.
  - CONCRETE: CONCRETE SHALL BE CLASS B IN ACCORDANCE WITH SECTION 501 OF THE STANDARD SPECIFICATIONS. ALL EXPOSED CORNERS TO BE CHAMFERED 3/4" BY 45° UNLESS OTHERWISE NOTED. ALL OTHER CORNERS TO BE ROUNDED 1/4" RADIUS.
  - REINFORCING STEEL: ALL REINFORCING STEEL SHALL BE GRADE 60.
  - BARS A#5 AND BARS A1#5 ARE TO BE EQUALLY SPACED NOT TO EXCEED 8" O.C. MAX.
  - DESIGN DATA: AASHTO STANDARD SPECIFICATIONS FOR HIGHWAY BRIDGES 17TH EDITION 2002



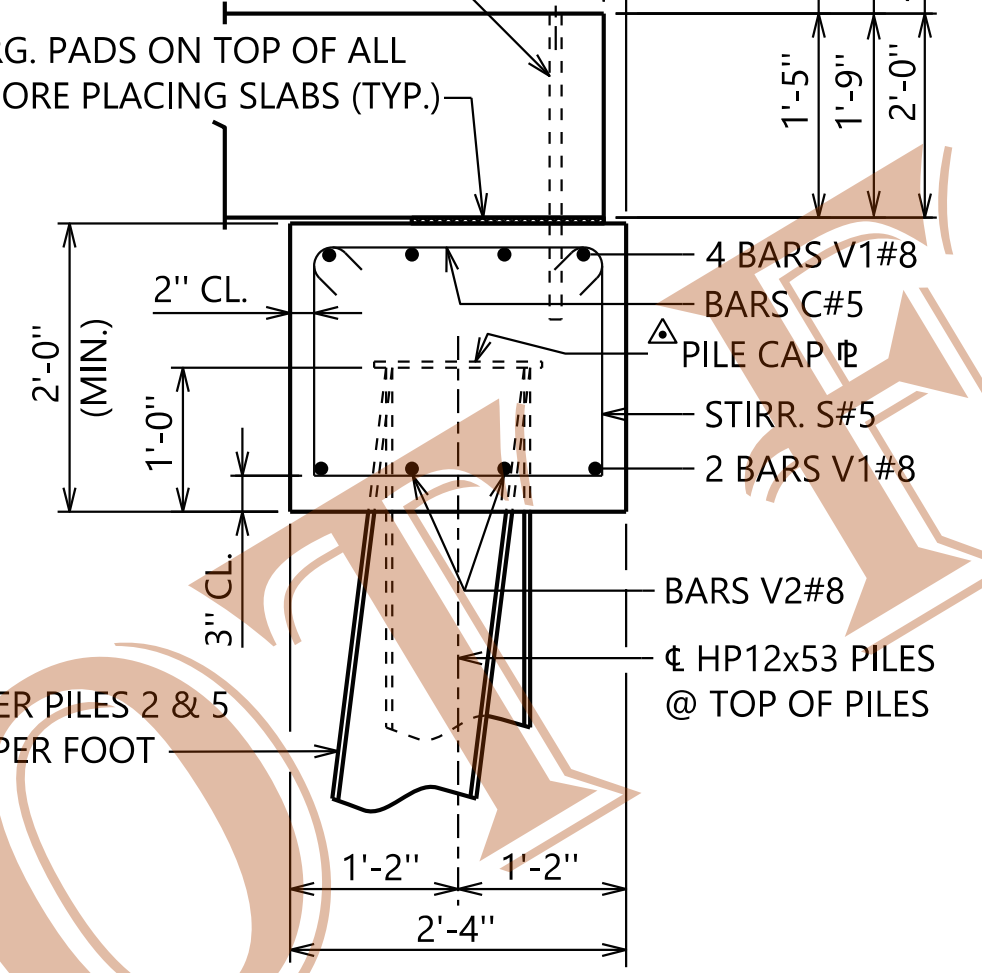
**ELEVATION**  
SCALE: 3/8" = 1'-0"



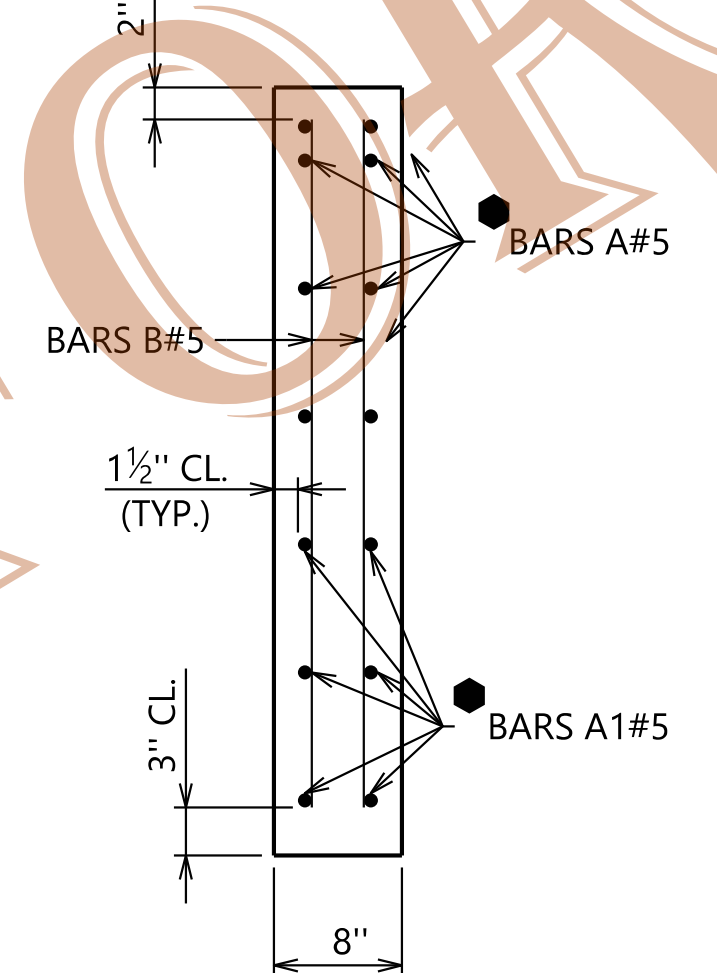
**END**  
SCALE: 3/8" = 1'-0"

GROUT ALL HOLES IN ALL CAPS AND ALL SLABS AFTER PROPER ALIGNMENT HAS BEEN OBTAINED AND #6 x 1'-11" DOWEL PINS HAVE BEEN PLACED (TYP.)

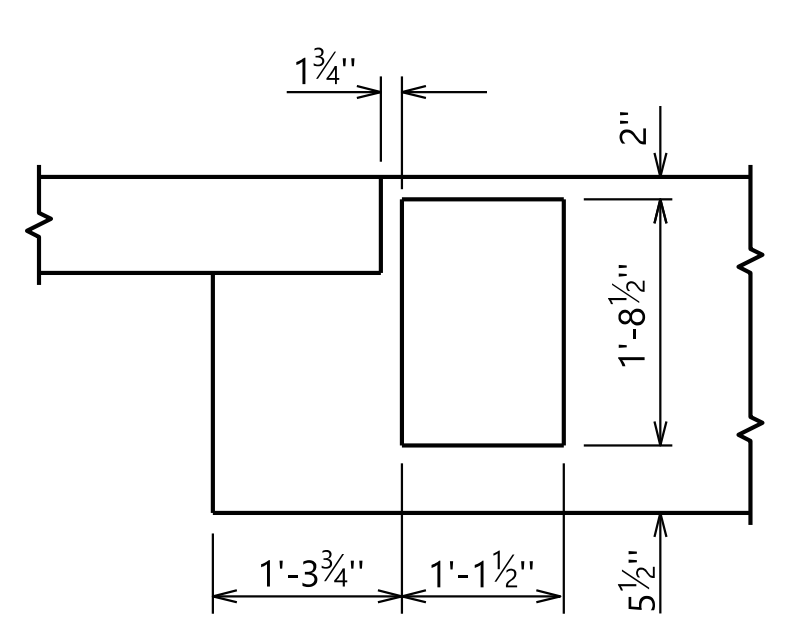
PLACE BRG. PADS ON TOP OF ALL CAPS BEFORE PLACING SLABS (TYP.)



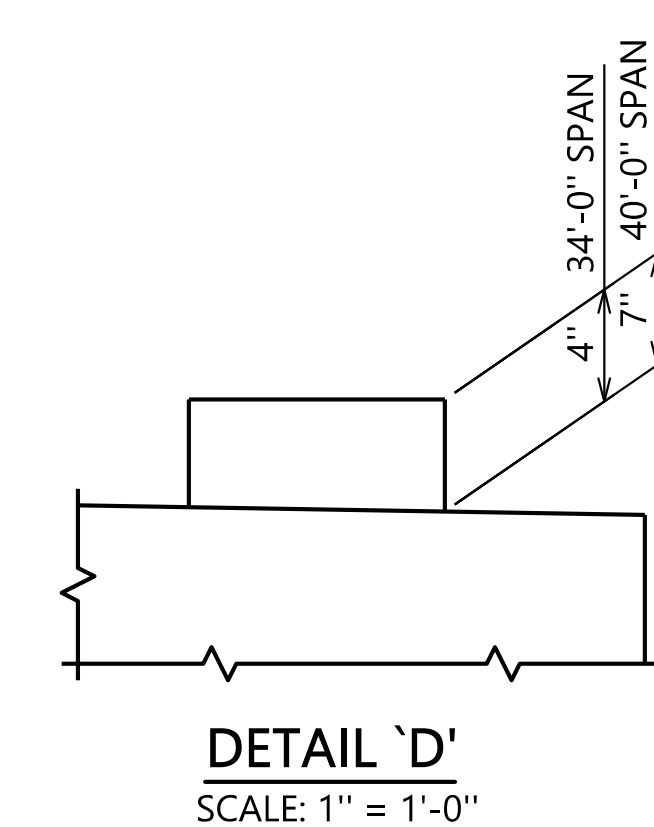
**SECTION A-A**  
SCALE: 3/4" = 1'-0"



**SECTION B-B**  
SCALE: 1" = 1'-0"



**DETAIL 'C'**  
SCALE: 3/4" = 1'-0"



**DETAIL 'D'**  
SCALE: 1" = 1'-0"

**ABUTMENT PILE AXIAL COMPRESSION LOADS - MIN.**

24'-0" SPAN	28 TONS PER PILE
34'-0" SPAN	36 TONS PER PILE
40'-0" SPAN	42 TONS PER PILE

NOTE: LOADS ARE FOR 0% GRADE BRIDGES.

**ESTIMATED QUANTITIES (PER ABUTMENT)**

24'-0" SPAN	34'-0" SPAN	40'-0" SPAN			
1,290	1,320	1,360	POUNDS	502A	STEEL REINFORCEMENT
136	136	136	POUNDS	508A	STRUCTURAL STEEL
6.4	6.6	6.7	CUBIC YARDS	510A	SUBSTRUCTURE CONCRETE

ASSISTANT BRIDGE ENGINEER <i>[Signature]</i> DATE: 1/16/22	BRIDGE ENGINEER <i>[Signature]</i> DATE: 1/17/22
--	--

PLOTTED: 27-Dec-21 at 09:55  
 \\bnvms002\Bridges\Standard\Special\Bridges\Special DGN Files\2022 DGIN\Precast\ab2400.dgn