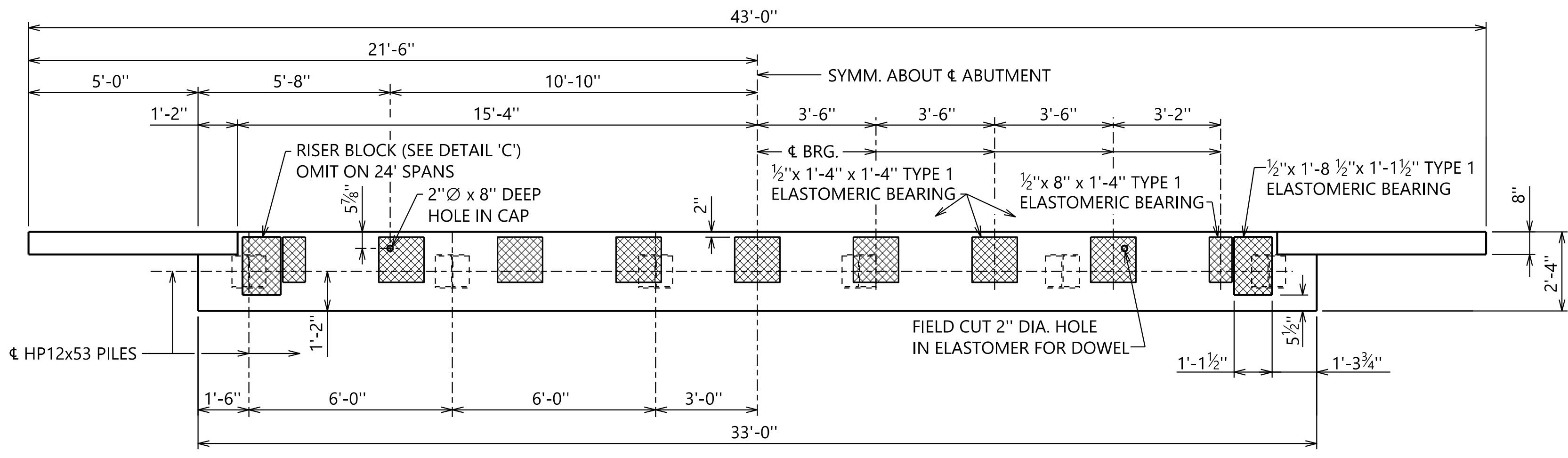


2'
1"
0

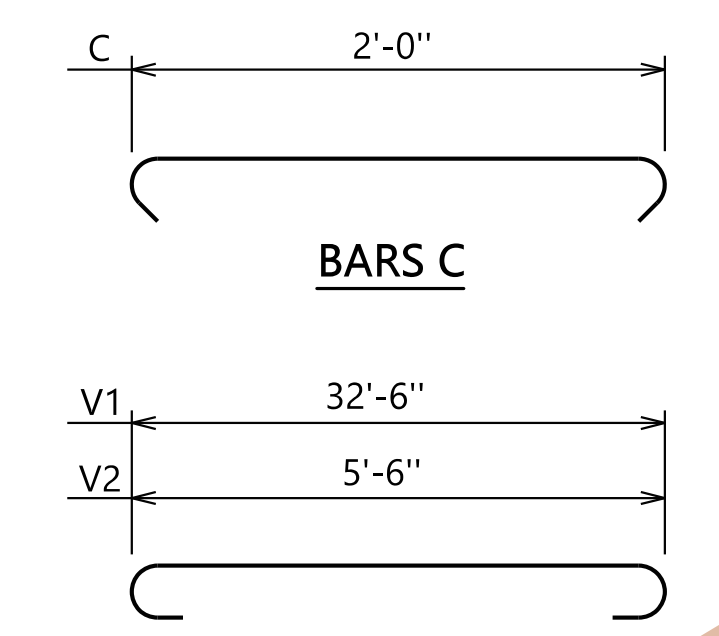
\\brms002\Bridges\Standard\Special\Bridges\Special DGN Files\2022 DGIN\Precast\ab2800.dgn

PLOTTED: 27-Dec-21 at 09:56

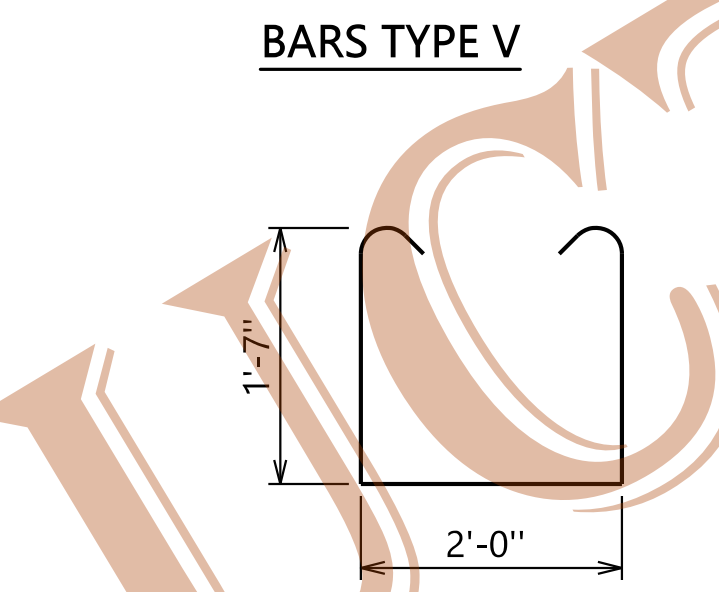
REFERENCE PROJECT NUMBER	FISCAL YEAR	SHEET NUMBER
--------------------------	-------------	--------------



PLAN
SCALE: 3/8" = 1'-0"



BARS C

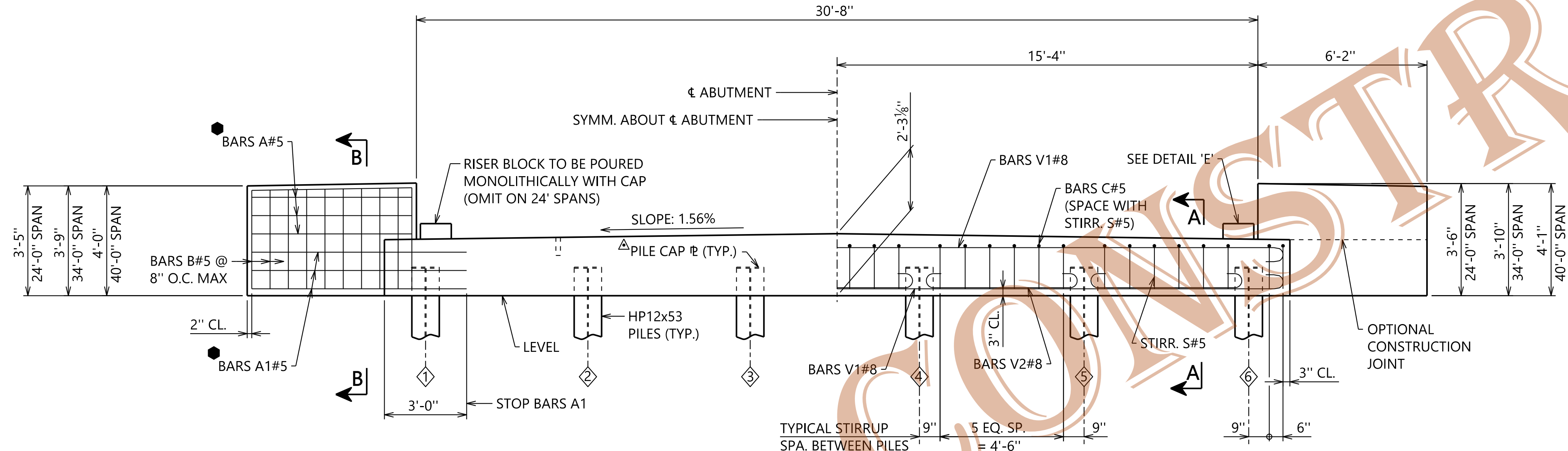


BARS TYPE V

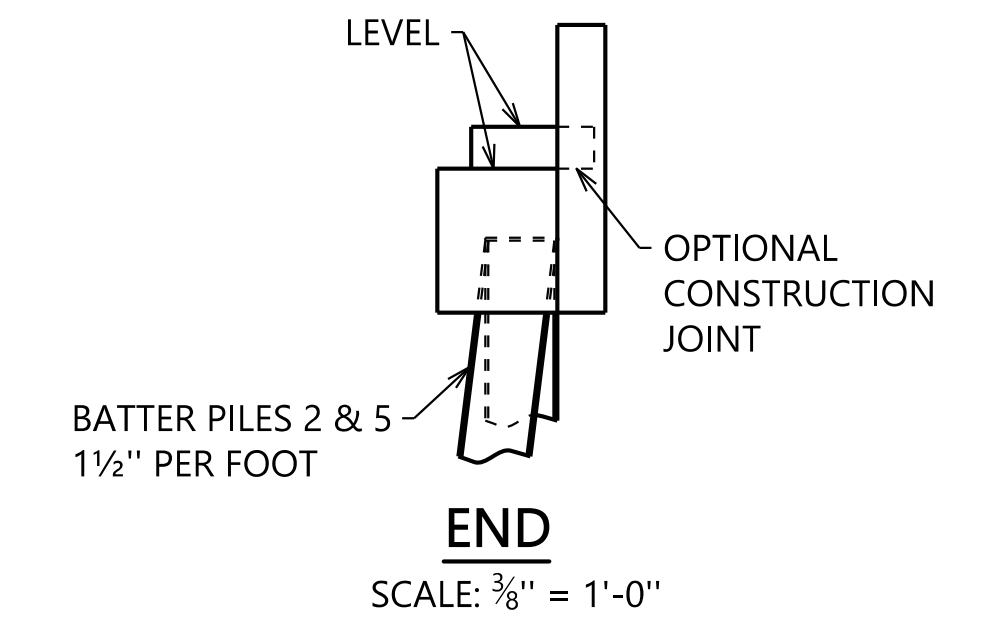
STIRRUP S

NOTES

- FOR PILE CAP PLATE DETAIL AND PILE SPLICE NOTE SEE BRIDGE SPECIAL PROJECT DRAWING SBD-1.
- FABRICATE ALL BARS B#5 TO SAME LENGTH AND MAINTAIN 2" CONCRETE COVER AT TOP OF BARS.
- CONCRETE: CONCRETE SHALL BE CLASS B IN ACCORDANCE WITH SECTION 501 OF THE STANDARD SPECIFICATIONS. ALL EXPOSED CORNERS TO BE CHAMFERED 3/4" BY 45° UNLESS OTHERWISE NOTED. ALL OTHER CORNERS TO BE ROUNDED 1/4" RADIUS.
- REINFORCING STEEL: ALL REINFORCING STEEL SHALL BE GRADE 60.
- BARS A#5 AND BARS A1#5 ARE TO BE EQUALLY SPACED NOT TO EXCEED 8" O.C. MAX.
- DESIGN DATA: AASHTO STANDARD SPECIFICATIONS FOR HIGHWAY BRIDGES 17TH EDITION 2002



ELEVATION
SCALE: 3/8" = 1'-0"

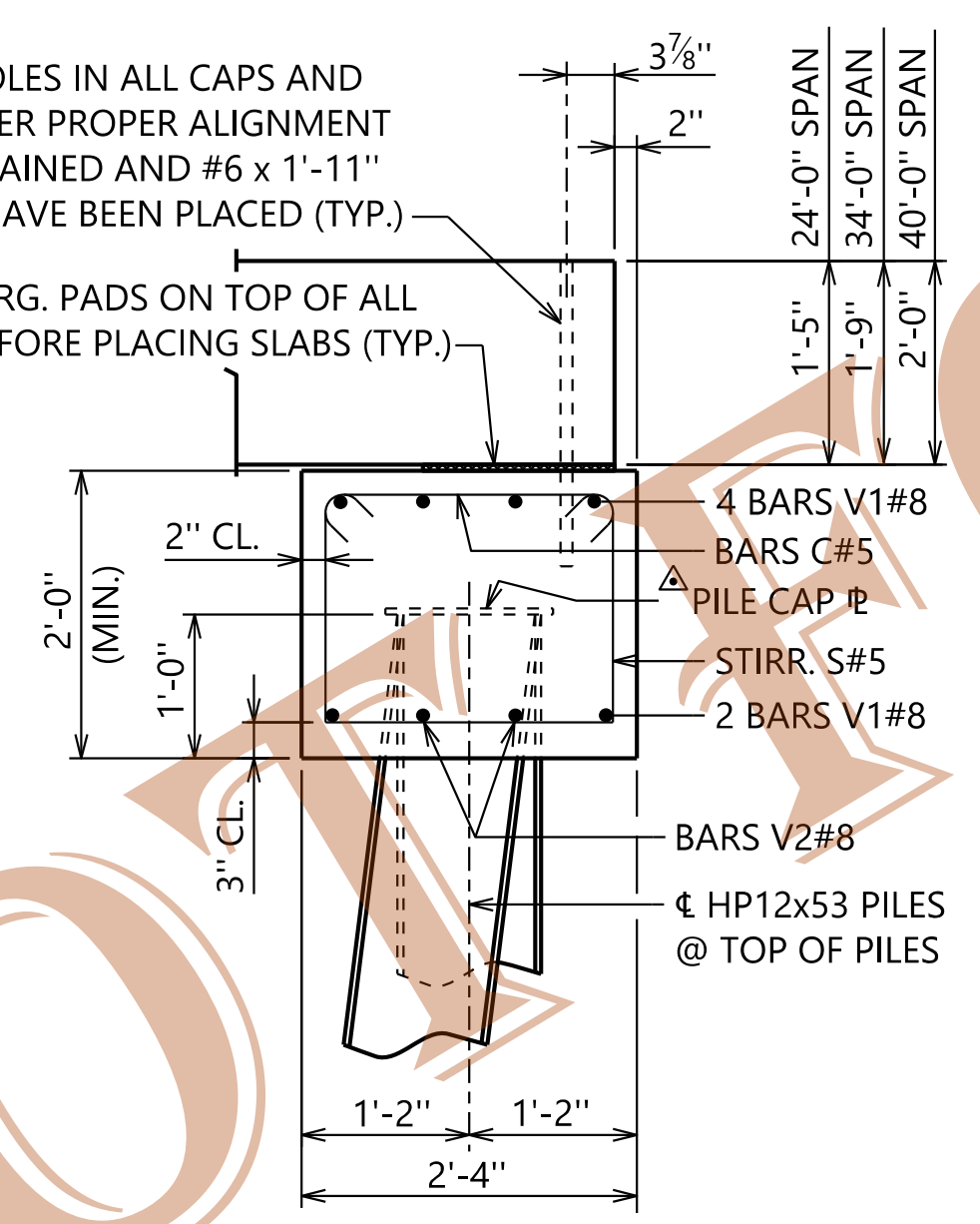


END

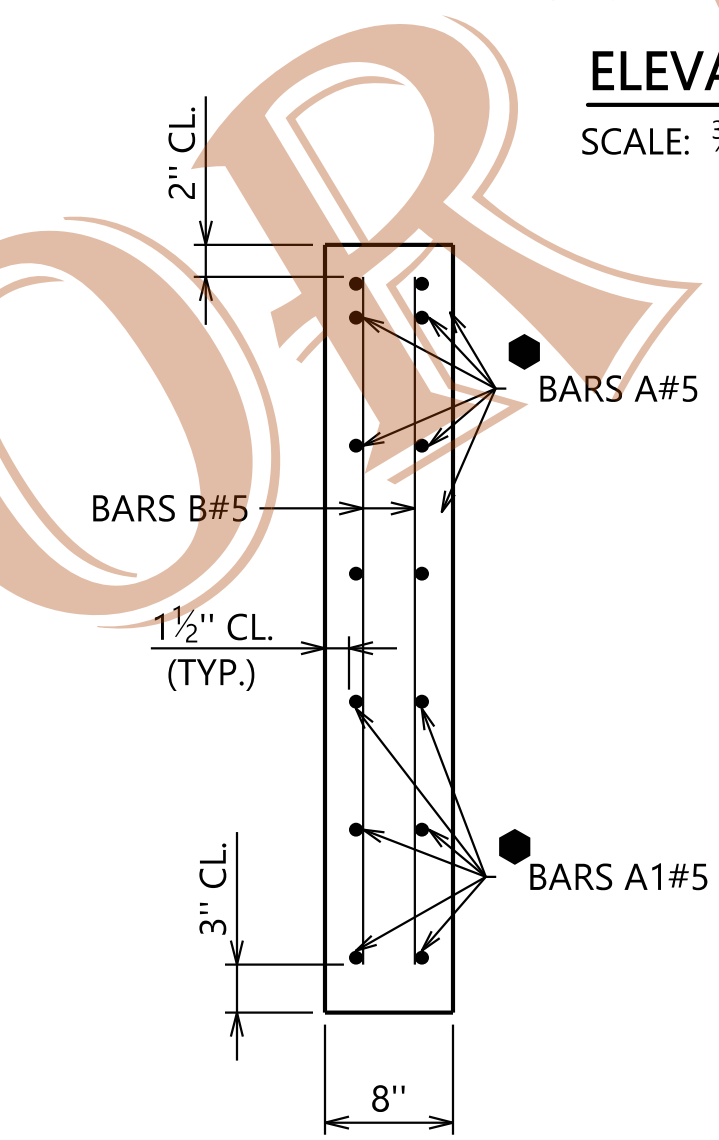
SCALE: 3/8" = 1'-0"

GROUT ALL HOLES IN ALL CAPS AND ALL SLABS AFTER PROPER ALIGNMENT HAS BEEN OBTAINED AND #6 x 1'-11" DOWEL PINS HAVE BEEN PLACED (TYP.)

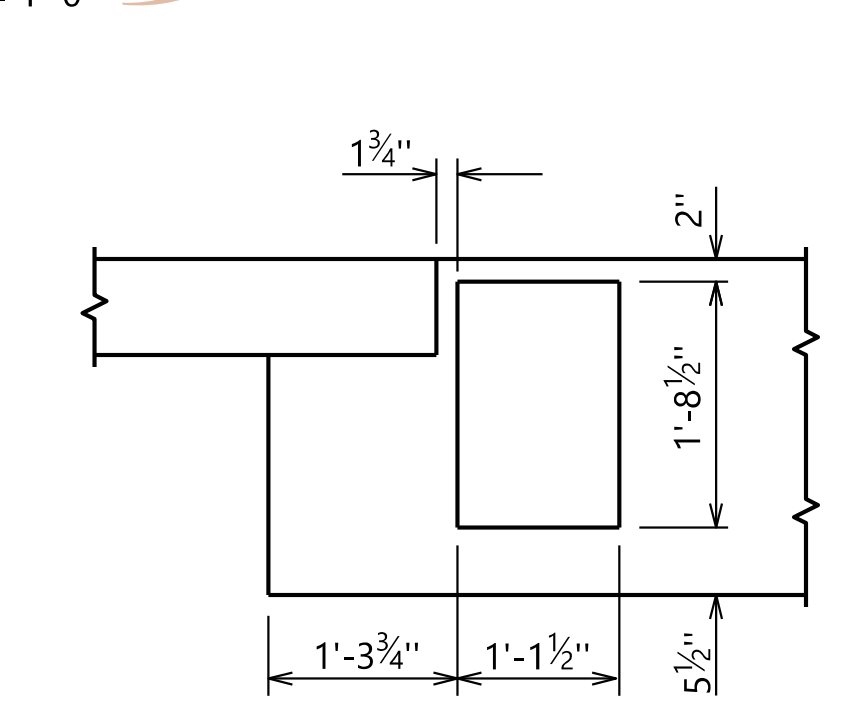
PLACE BRG. PADS ON TOP OF ALL CAPS BEFORE PLACING SLABS (TYP.)



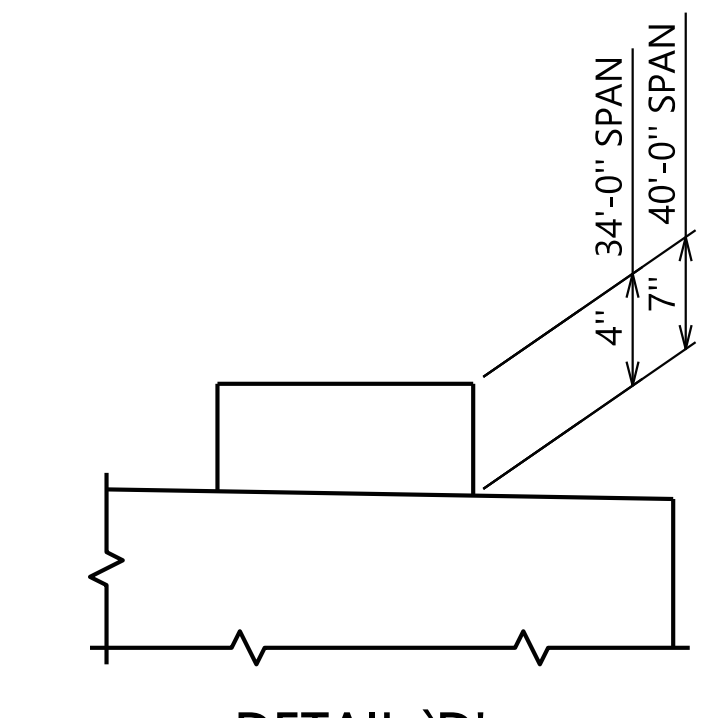
SECTION A-A
SCALE: 3/4" = 1'-0"



SECTION B-B
SCALE: 1" = 1'-0"



DETAIL 'C'
SCALE: 3/4" = 1'-0"



DETAIL 'D'
SCALE: 1" = 1'-0"

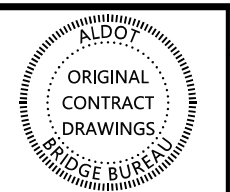
24'-0" SPAN	28 TONS PER PILE
34'-0" SPAN	36 TONS PER PILE
40'-0" SPAN	42 TONS PER PILE

NOTE: LOADS ARE FOR 0% GRADE BRIDGES.

24'-0" SPAN	34'-0" SPAN	40'-0" SPAN			
1,360	1,400	1,430	POUNDS	502A	STEEL REINFORCEMENT
136	136	136	POUNDS	508A	STRUCTURAL STEEL
7.1	7.2	7.4	CUBIC YARDS	510A	SUBSTRUCTURE CONCRETE

ASSISTANT BRIDGE ENGINEER <i>[Signature]</i> DATE: 1/6/22	BRIDGE ENGINEER <i>[Signature]</i> DATE: 1/7/2022
---	---

ALABAMA DEPARTMENT OF TRANSPORTATION



REVISIONS

THIS BRIDGE SPECIAL PROJECT DRAWING FOR USE ONLY ON:
PROJECT NO. _____
COUNTY(S) _____

THESE DRAWINGS REPRESENT DESIGNS PREPARED FOR USE BY THE ALABAMA DEPARTMENT OF TRANSPORTATION AND ARE NOT TO BE COPIED, REPRODUCED, ALTERED, OR USED BY ANYONE, OR ANY ORGANIZATION, WITHOUT THE EXPRESSED WRITTEN CONSENT OF THE ALABAMA DEPARTMENT OF TRANSPORTATION REPRESENTATIVE AUTHORIZED TO APPROVE SUCH USE. ANYONE MAKING UNAUTHORIZED USE OF THESE DRAWINGS MAY BE PROSECUTED TO THE FULLEST EXTENT OF THE LAW.

CAST IN PLACE ABUTMENT DETAIL FOR USE WITH 28'-0" ROADWAY AND 24'-0", 34'-0" OR 40'-0" SPANS

BRIDGE SPECIAL PROJECT DRAWING
AB2800
SHEET 1 OF 1