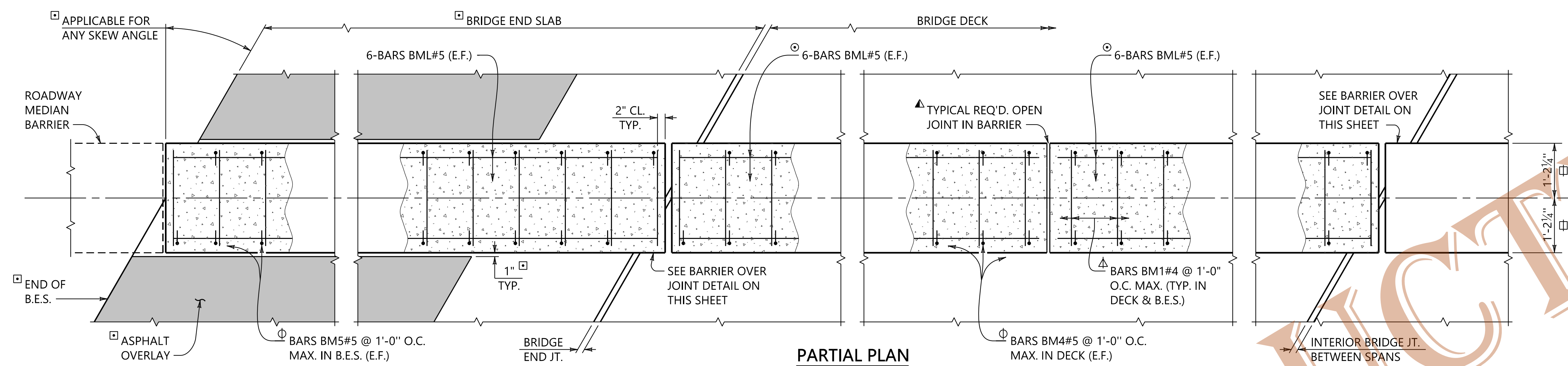
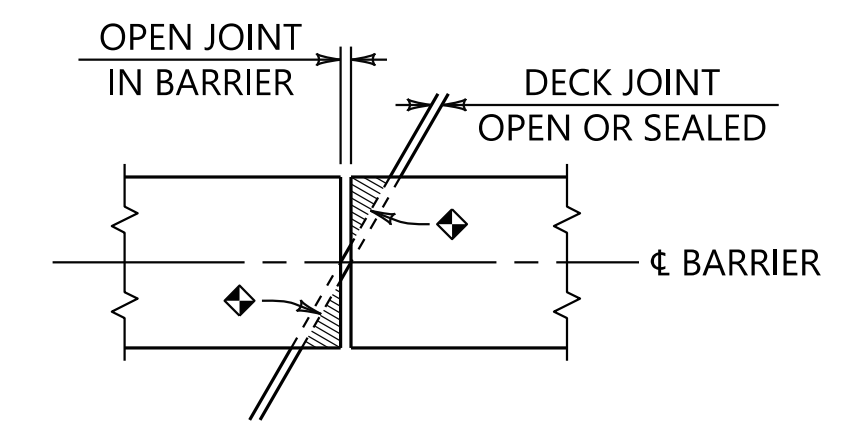


PLOTTED: 27-Jun-22 at 10:39
 \\brvms02\bridge\standard\Special Bridge\Details\BBR-M(54) Bridge Median Barrier Rail.dgn



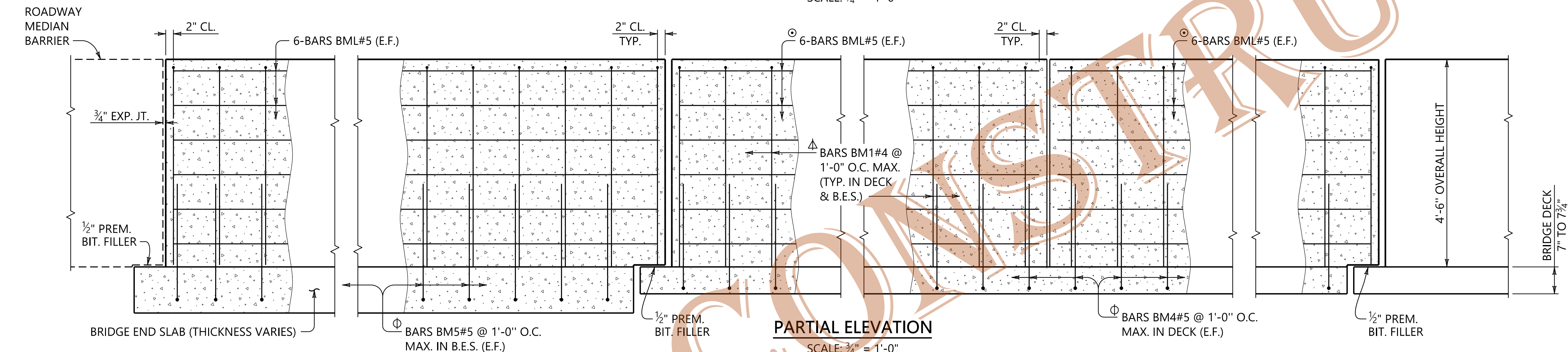
PARTIAL PLAN
SCALE: 3/4" = 1'-0"

- INCREASE DIMENSIONS TO 1'-3/4" WHEN OPTIONAL CROSS-SECTION IS USED.
- △ WHEN THE OPTIONAL CROSS-SECTION IS USED BARS BM2 & BM3#4 ARE SPACED SIMILARLY
- BARS BM6#5 SPACED SIMILARLY WHEN DRILL-IN ATTACHMENT IS REQUIRED



BARRIER OVER JOINT
NO SCALE

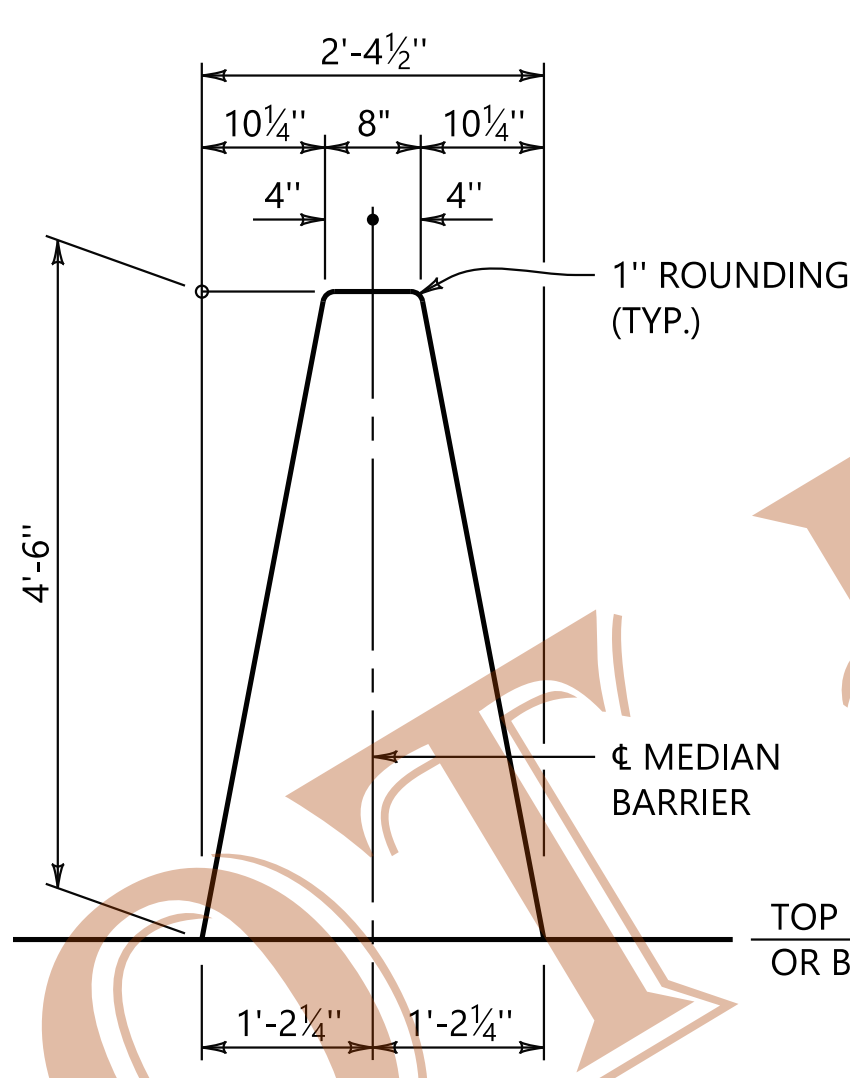
- ◆ 1/2" PREMOLDED BITUMINOUS FILLER TO BE PLACED UNDER CORNER OF BARRIER ON OPPOSING SIDE OF JOINT.
- FOR BRIDGES ON A 0° SKEW, THE JOINT IN BARRIER TO MATCH JOINT IN DECK. (NO FILLER REQUIRED)



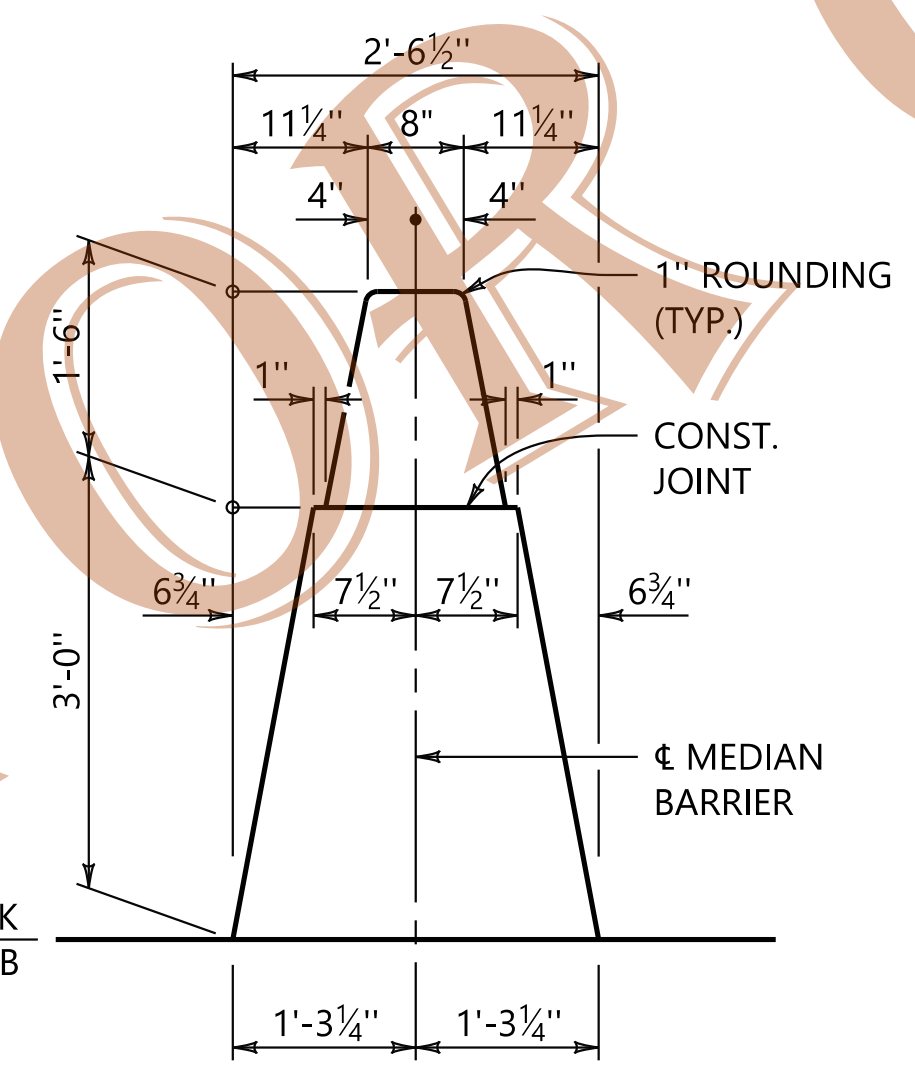
PARTIAL ELEVATION
SCALE: 3/4" = 1'-0"

NOTES

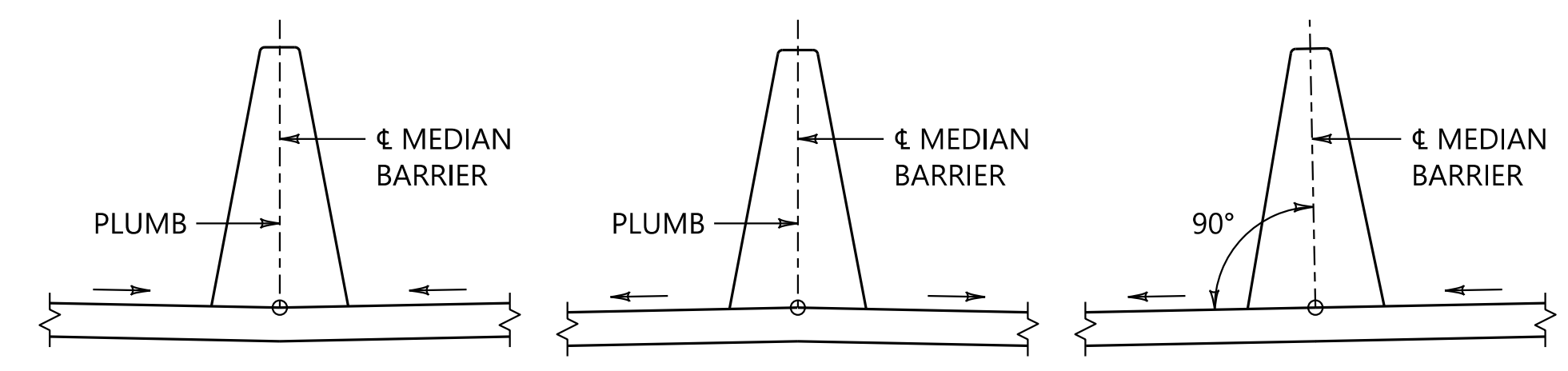
1. IN ADDITION TO THE OPEN JOINTS SHOWN ON THE BRIDGE DRAWINGS AT THE BEGINNING AND END OF SPANS, OPEN JOINTS IN THE MEDIAN BARRIER RAIL SHALL BE LOCATED AS FOLLOWS: FOR SPANS UP TO 60 FEET IN LENGTH, PROVIDE ONE JOINT AT THE MID-POINT OF THE SPAN. FOR SPANS OVER 60 FEET IN LENGTH, PROVIDE ONE JOINT AT THE MID-POINT OF THE SPAN AND ADDITIONAL JOINTS AT EQUAL SPACES NOT TO EXCEED 30 FEET BETWEEN JOINTS.
2. FOR CONTINUOUS SPAN UNITS, OPEN JOINTS IN THE MEDIAN BARRIER RAIL SHALL ALSO BE PROVIDED AT INTERIOR BENT LOCATIONS.
3. INTERIOR JOINT OPENINGS SHALL BE THREE-QUARTER INCH (3/4") IN WIDTH WHENEVER THE MEDIAN BARRIER RAIL IS CONSTRUCTED BY MEANS OTHER THAN A SLIP FORM EXTRUSION MACHINE.
4. BARS BLM TO BE PLACED CONTINUOUSLY AND CUT AT JOINT LOCATIONS TO PROVIDE FOR TWO INCH (2") END COVER. BARS BLM MAY BE SPICED 30 DIA. MIN.
5. THE MEDIAN BARRIER RAIL ON BRIDGE DECKS SHALL BE PAID FOR IN PAY ITEMS 502B, STEEL REINFORCEMENT FOR BRIDGE SUPERSTRUCTURE AND 510J, BRIDGE BARRIER RAIL, TYPE 54" CSF MEDIAN.
6. THE MEDIAN BARRIER RAIL ON BRIDGE END SLABS SHALL BE PAID FOR IN PAY ITEM 450B, REINFORCED CEMENT CONCRETE BRIDGE END SLAB.



TYPICAL CROSS-SECTION
(w/o CONST. JT.)
SCALE: 3/4" = 1'-0"

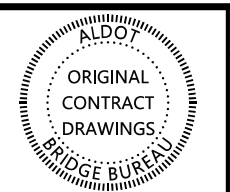


OPTIONAL CROSS-SECTION
(w/ CONST. JT.)
SCALE: 3/4" = 1'-0"



VERTICAL ORIENTATION OF MEDIAN BARRIER
(RELATIVE TO BRIDGE DECK/B.E.S. SLOPES)
NO SCALE

□ THE BRIDGE END SLAB SHOWN DEPICTS THE TYPICAL DETAILS USED FOR BITUMINOUS PAVEMENTS. CONCRETE PAVEMENT DETAILS ARE SIMILAR WITH THE OMISSION OF THE END SKEW AND ASPHALT OVERLAY. SEE SHEET 2 OF 2 FOR ADDITIONAL DETAILS.



REVISIONS

THIS BRIDGE SPECIAL PROJECT DRAWING FOR USE ONLY ON:
PROJECT NO. _____
COUNTY(S) _____

THESE DRAWINGS REPRESENT DESIGNS PREPARED FOR USE BY THE ALABAMA DEPARTMENT OF TRANSPORTATION AND ARE NOT TO BE COPIED, REPRODUCED, ALTERED, OR USED BY ANYONE, OR ANY ORGANIZATION, WITHOUT THE EXPRESSED WRITTEN CONSENT OF THE ALABAMA DEPARTMENT OF TRANSPORTATION REPRESENTATIVE AUTHORIZED TO APPROVE SUCH USE. ANYONE MAKING UNAUTHORIZED USE OF THESE DRAWINGS MAY BE PROSECUTED TO THE FULLEST EXTENT OF THE LAW.

BRIDGE BARRIER RAIL
(54" CSF MEDIAN)

BRIDGE SPECIAL PROJECT DRAWING	
BBR-M(54)	SHEET 1 OF 2

ASSISTANT BRIDGE ENGINEER <i>Ally T. L...</i> DATE: 6/29/22	BRIDGE ENGINEER <i>W...</i> DATE:
---	---

