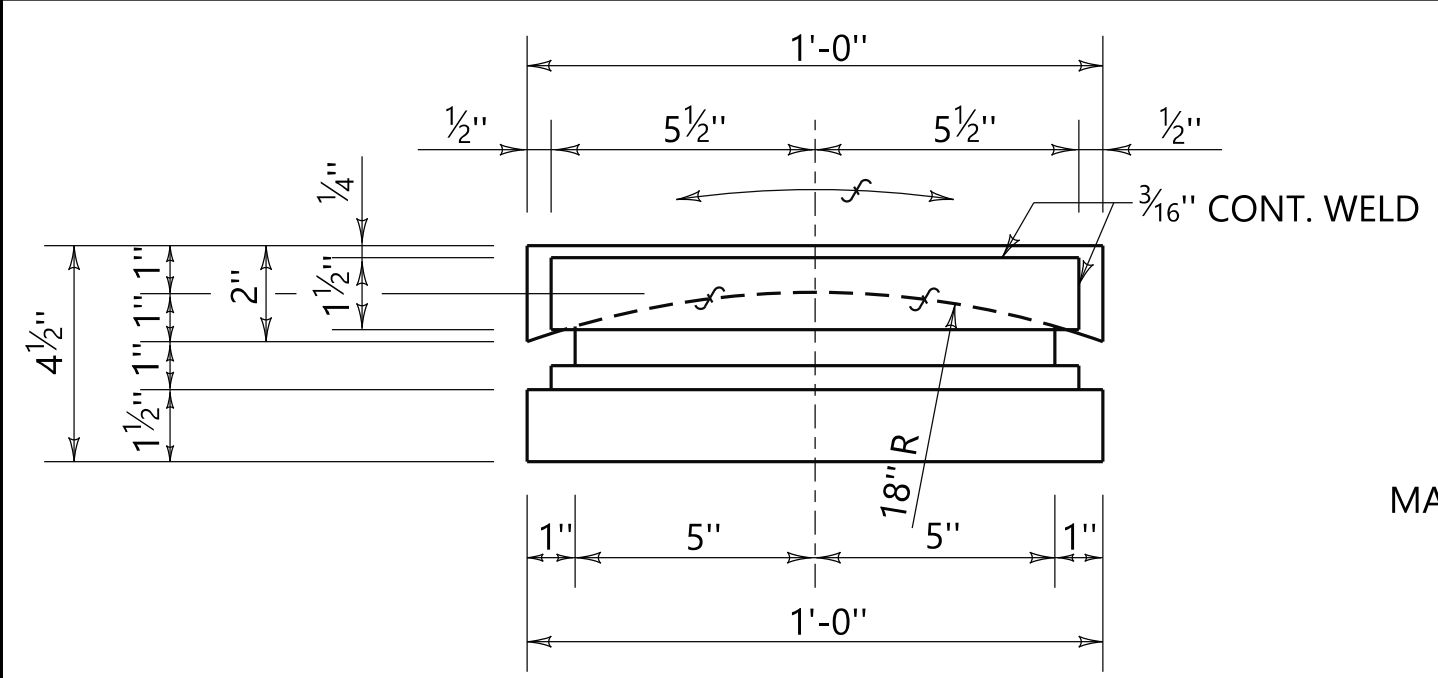


PLOTTED: 19-Nov-20 at 13:16
 \\brvms02a\Bridges\Standard\Special\Bridges\Special DGN Files\2021 DGN\5 Miscellaneous Details\1-100.dgn
 SHEET REFERENCE
 0 1" 2"

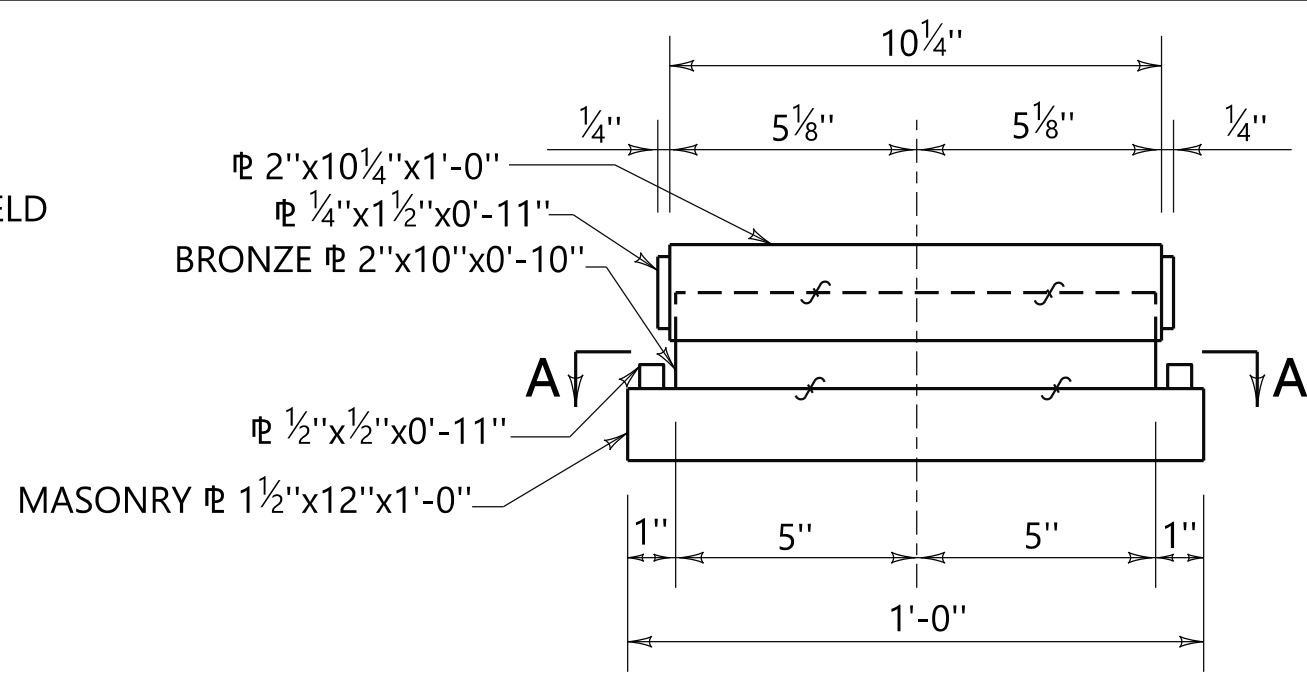
REFERENCE PROJECT NUMBER	FISCAL YEAR	SHEET NUMBER
--------------------------	-------------	--------------

NOTES

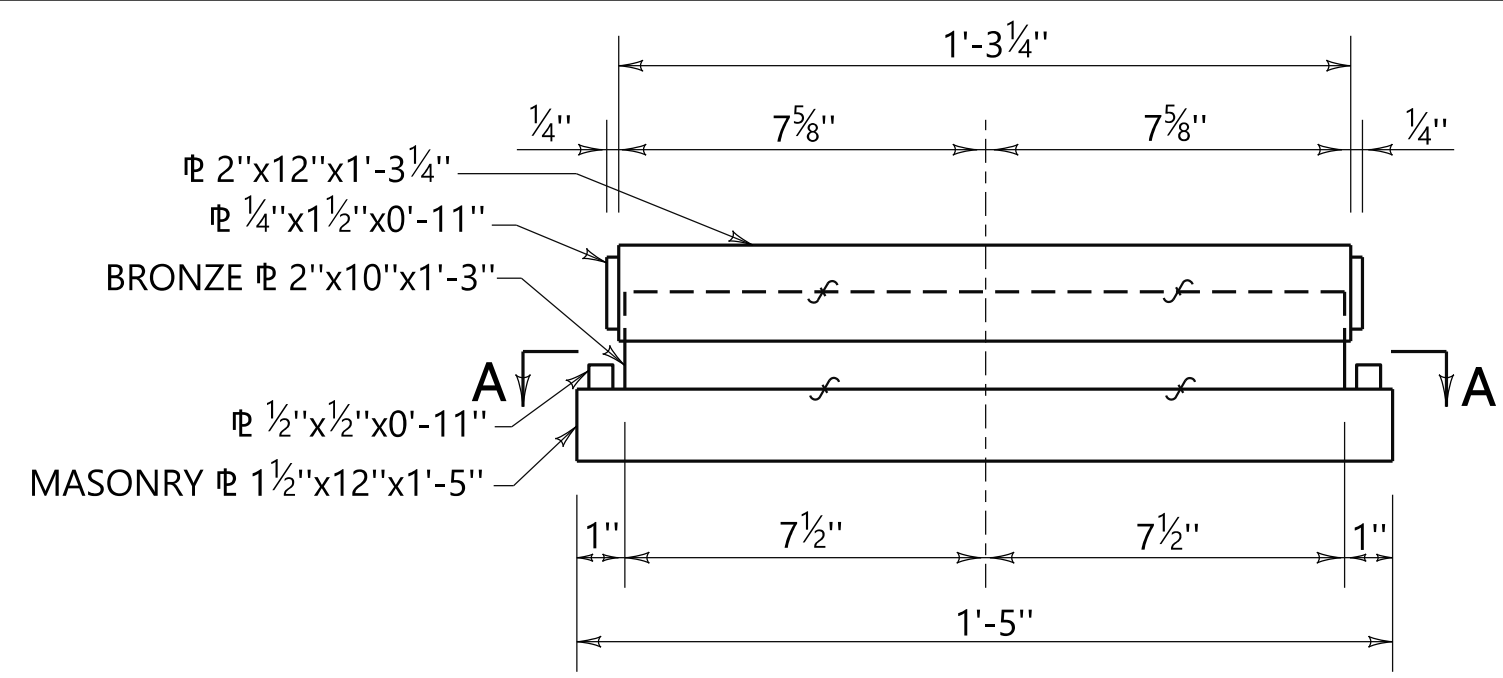
- SET ALL MASONRY PLATES 1/2" INTO CAP.
- IF TOP PLATE OF SHOE IS NOT 3/4" WIDER THAN BEAM FLANGE A 3/8" x 13" x (FLANGE + 1" LONG) SOLE PLATE SHALL BE USED. SOLE PLATE SHALL BE SHOP WELDED (3/16" FILLET) TO TOP PLATE OF SHOE (TO FLANGE) AND FIELD WELDED (3/16" FILLET) ALONG BEAM FLANGE. ADD 5/8" TO DIMENSION F, ON SHEET 2, FOR THIS CONDITION. WHERE THE GRADE EXCEEDS 3% A BEVELED SOLE PLATE SHALL BE PROVIDED. THIS PLATE SHALL REPLACE THE 3/8" x 13" PLATE CALLED FOR ABOVE IN THE CASE WHERE BOTH WOULD BE REQUIRED. ON SHOE SIZES UP THROUGH 2.5 THE THICKNESS AT 4 BRG. SHALL BE AS FOLLOWS: (GRADES 3% THRU 5% USE 3/8") (GRADES OVER 5% THRU 8% USE 7/8") AND THE LENGTH, WIDTH AND WELDING OF PLATE SHALL BE AS CALLED FOR ABOVE UNLESS OTHERWISE NOTED ON PLANS.
- ALL BEARINGS SHALL BE SHOP ASSEMBLED, LUBRICATED AND THEN BANDED AS SHOWN BEFORE SHIPPING. REMOVE BANDING AFTER CONCRETE SPAN IS POURED OR JUST PRIOR TO ERECTING STEEL BEAM SPANS.
- AFTER BANDING OF BEARING ASSEMBLIES, EXPOSED MACHINED SURFACES SHALL BE COVERED WITH A HEAVY SHOP COAT OF PETROLATUM (NLGI GRADE 2 OR 3). ALL OTHER EXPOSED SURFACES, EXCEPT BRONZE PLATES AND TOP SURFACE OF TOP PLATE, SHALL BE PAINTED IN THE SHOP WITH ONE COAT OF SHOP PRIMER. ADDITIONAL PAINTING SHALL BE AS PER SPECIFICATIONS.



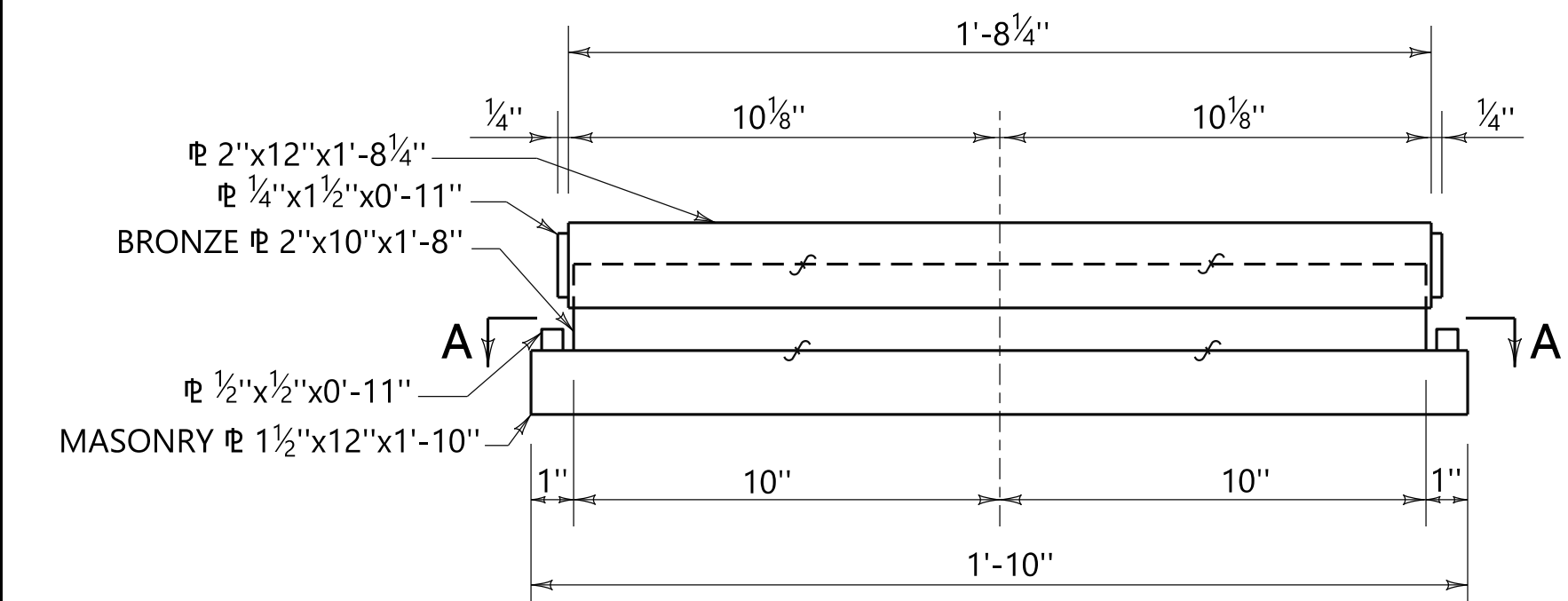
TYP. ELEVATION
TYPE 1.0, 1.5, 2.0, 2.5



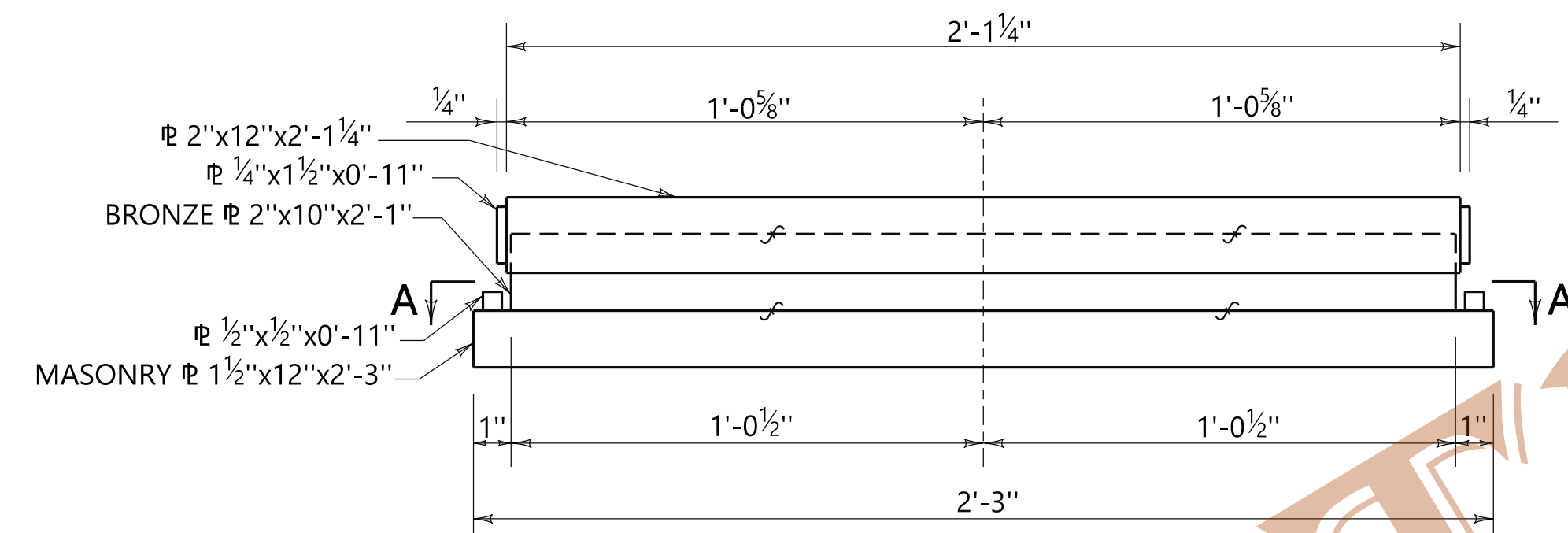
END VIEW
TYPE 1.0



END VIEW
TYPE 1.5



END VIEW
TYPE 2.0



END VIEW
TYPE 2.5

NOTE: TOP AND BOTTOM SURFACES OF BRONZE PLATES IN EXPANSION ASSEMBLIES TO BE SELF LUBRICATING.

EXPANSION ASSEMBLIES TYPE 1.0, 1.5, 2.0, 2.5

APPROXIMATE QUANTITIES *

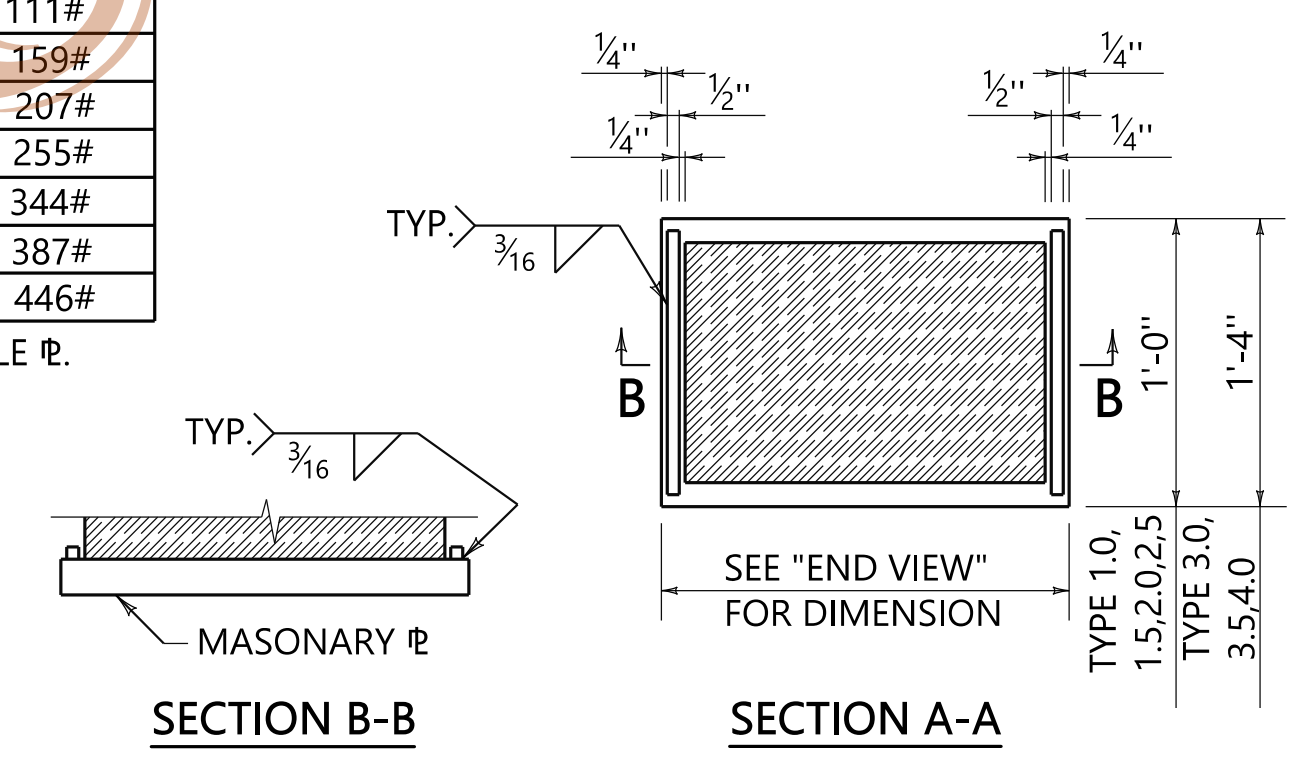
TYPE	DESIGN REACTION	EXP. SHOE STR. STEEL	BRONZE	FIX. SHOE STR. STEEL
1.0	100,000#	112#	56#	111#
1.5	150,000#	160#	84#	159#
2.0	200,000#	208#	112#	207#
2.5	250,000#	256#	140#	255#
3.0	300,000#	345#	234#	344#
3.5	350,000#	389#	266#	387#
4.0	400,000#	448#	308#	446#

* QUANTITIES SHOWN DO NOT INCLUDE SOLE PL. SEE SOLE PL. QUANTITIES BELOW.

SOLE PLATE QUANTITIES **

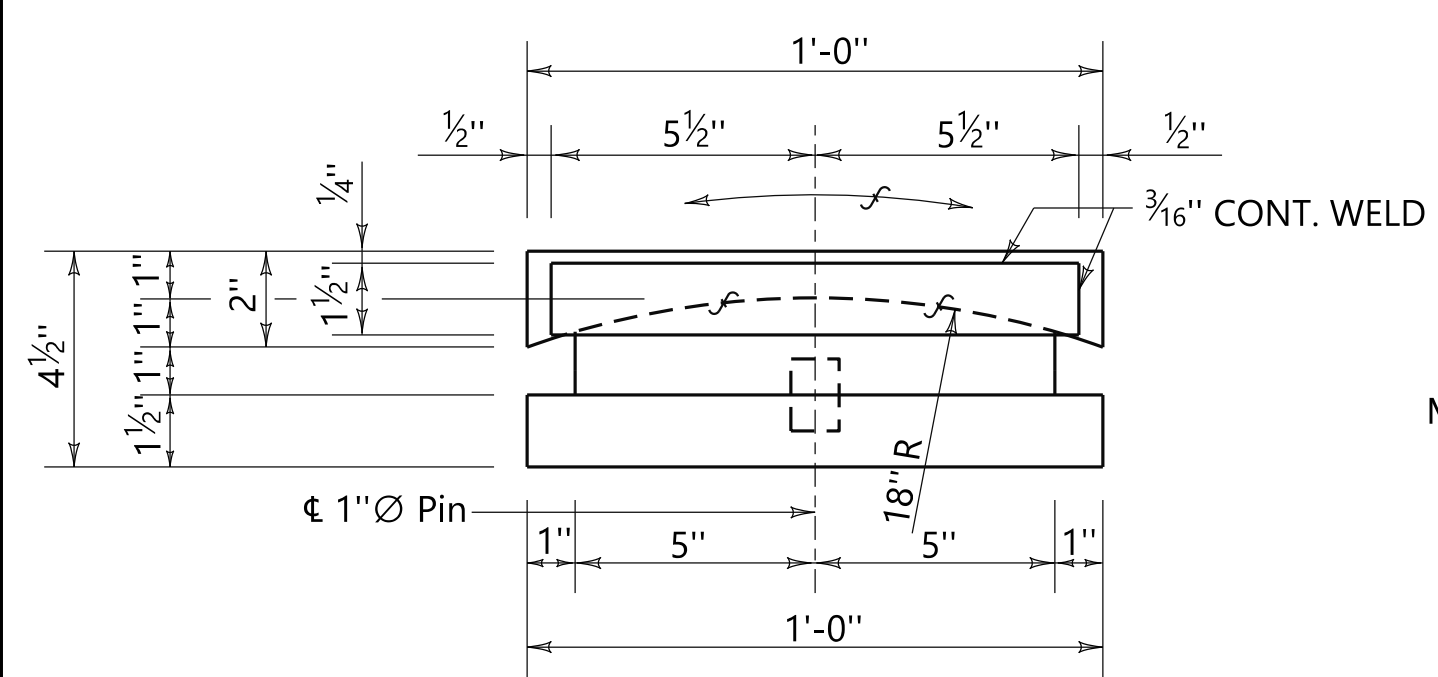
GIRDER WIDTH	TYPE 1.0, 1.5 & 2.0	TYPE 2.5, 3.0, 3.5 & 4.0
16 3/4"	99#	127#
20 1/2"	120#	155#
24"	139#	180#

** 0° SKEW (CONCRETE GIRDERS ONLY)

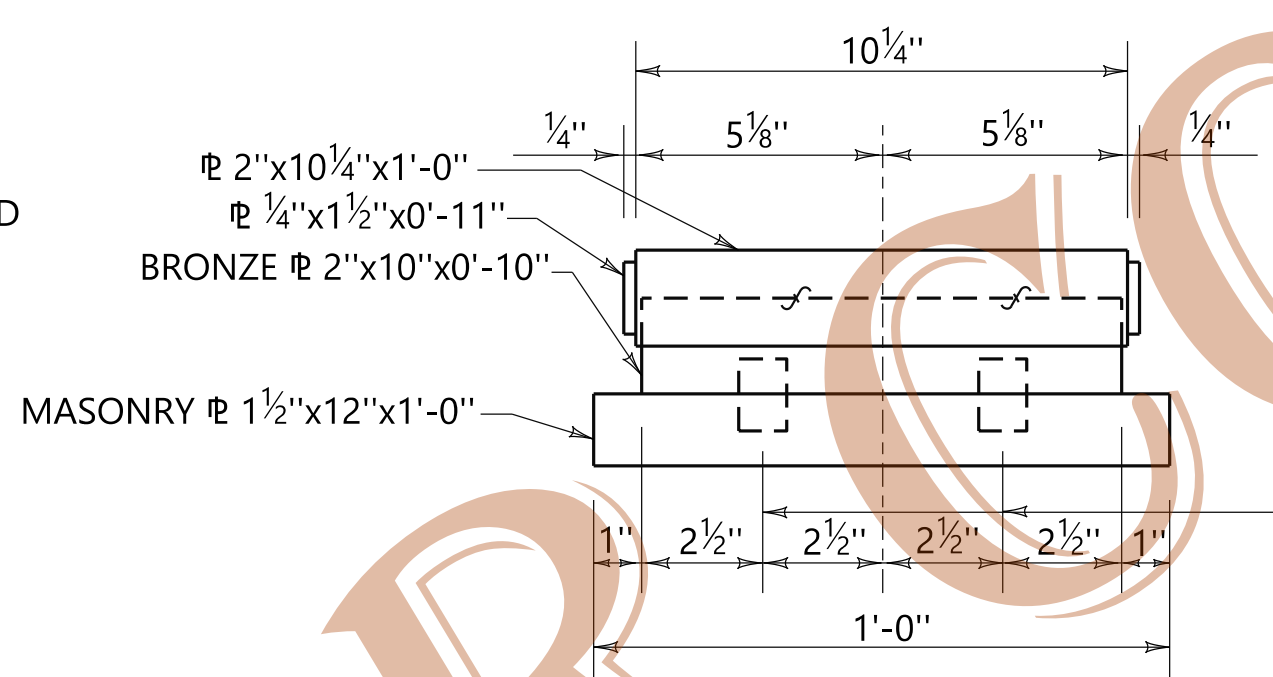


SECTION B-B

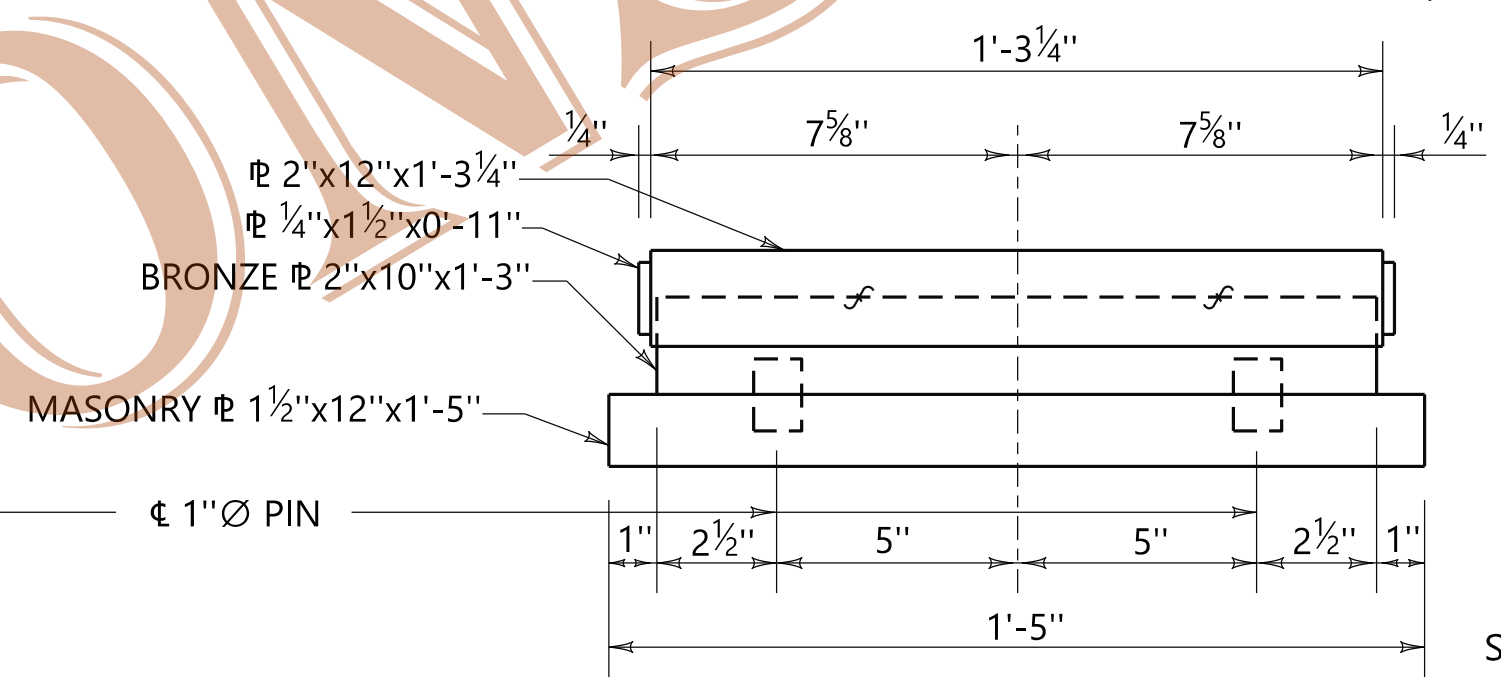
SECTION A-A



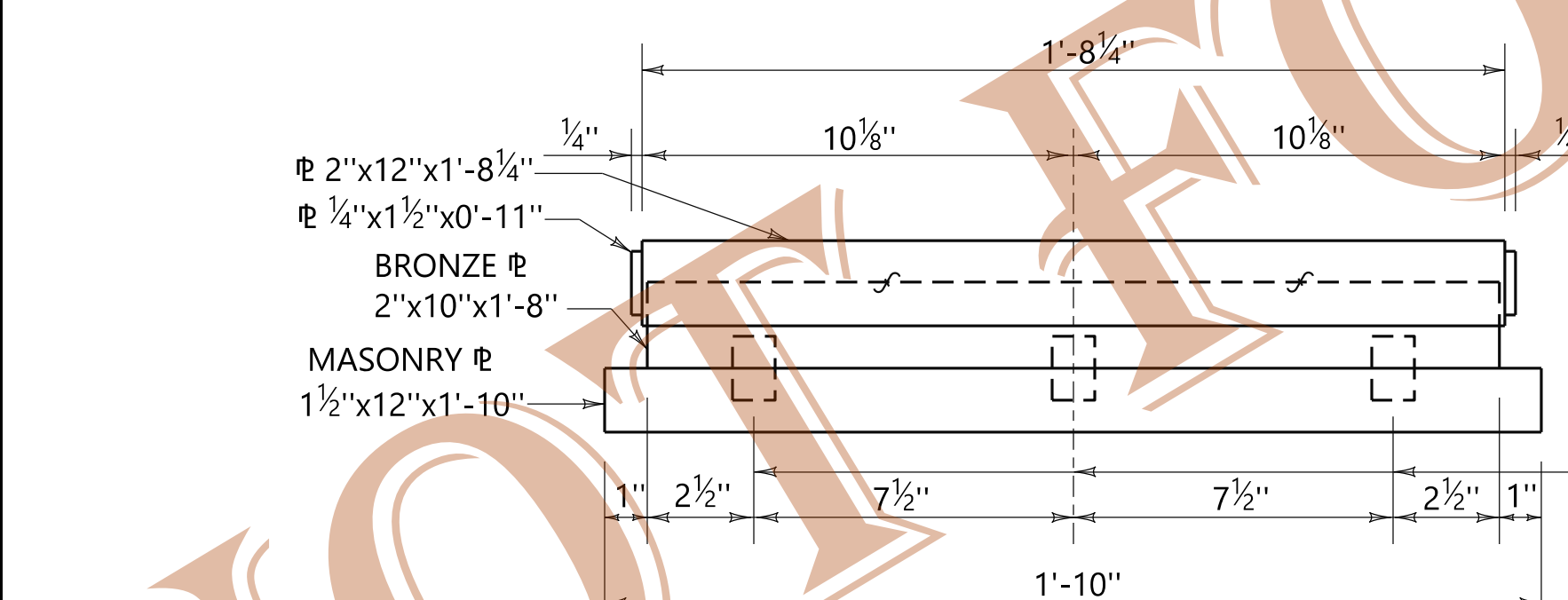
TYP. ELEVATION
TYPE 1.0, 1.5, 2.0, 2.5



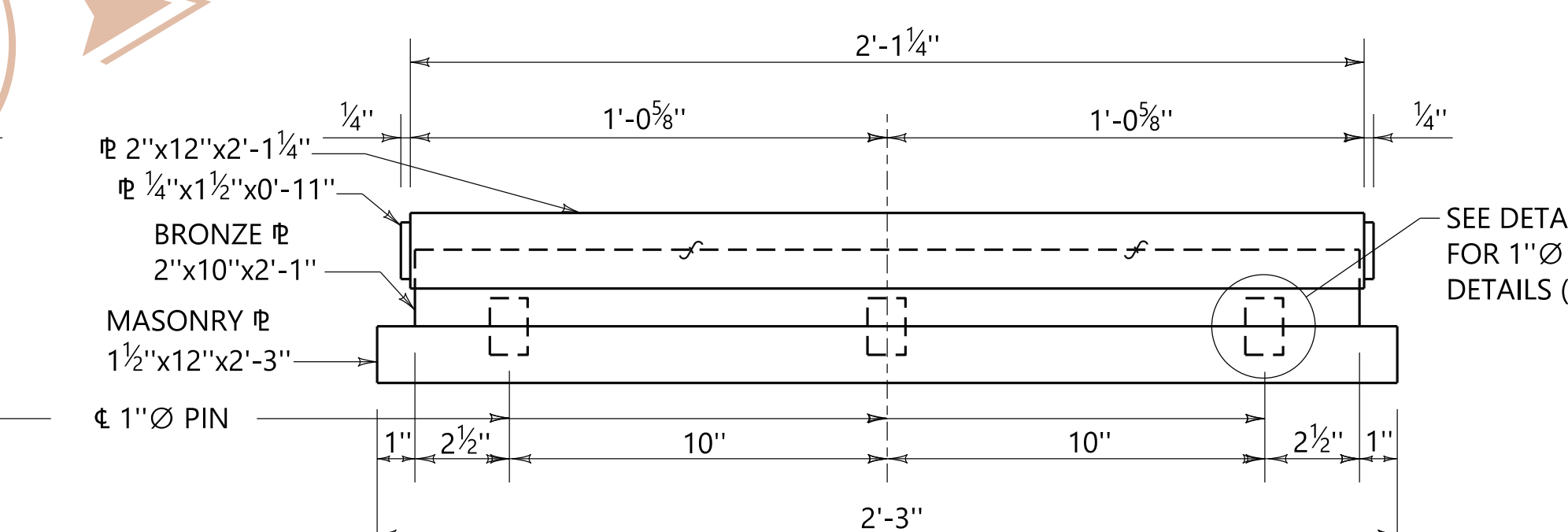
END VIEW
TYPE 1.0



END VIEW
TYPE 1.5



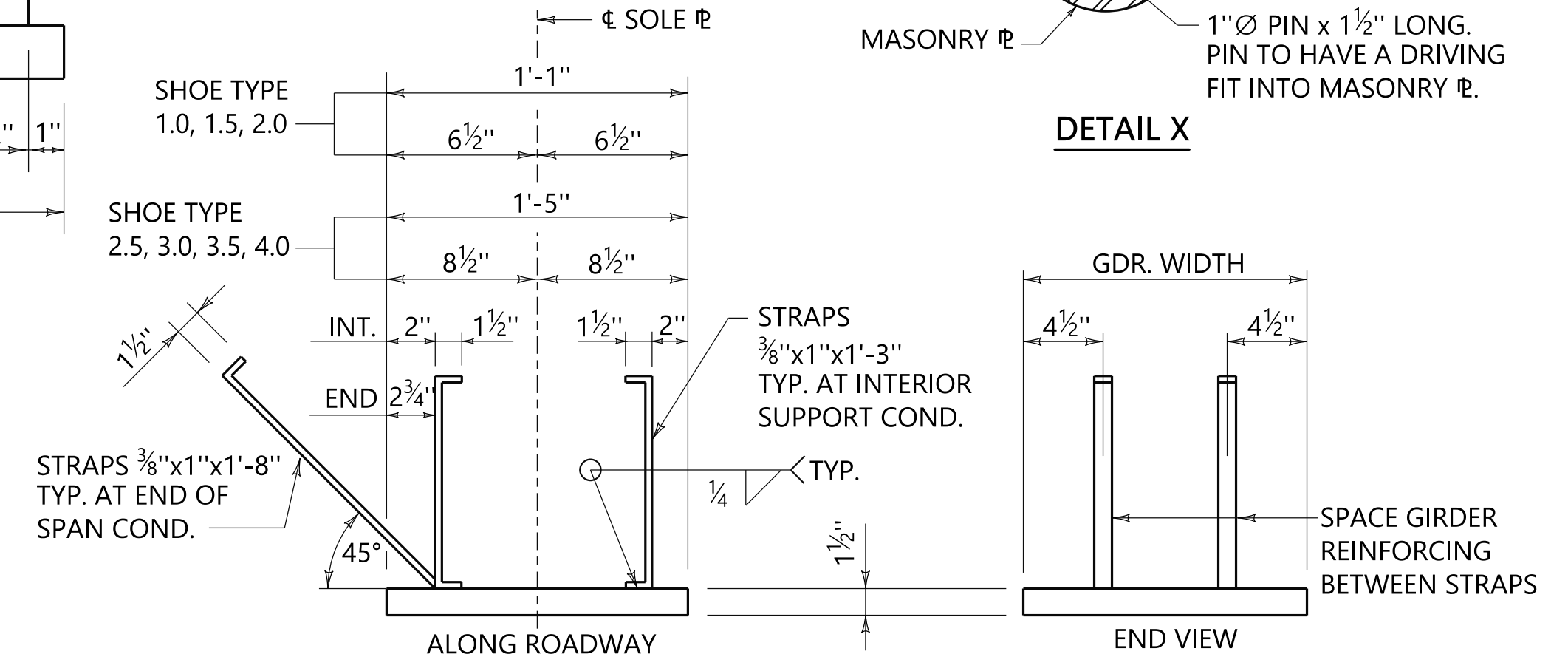
END VIEW
TYPE 2.0



END VIEW
TYPE 2.5

NOTE: TOP SURFACES OF BRONZE PLATES IN FIXED ASSEMBLIES TO BE SELF LUBRICATING.

FIXED ASSEMBLIES TYPE 1.0, 1.5, 2.0, 2.5



SOLE PLATE DETAIL - 0.00° SKEW FOR CONCRETE GIRDERS ONLY

ASSISTANT BRIDGE ENGINEER <i>[Signature]</i> DATE 11/20/2020	BRIDGE ENGINEER <i>[Signature]</i> DATE 11/20/2020
--------------------------------------------------------------------	----------------------------------------------------------

REVISIONS

--	--

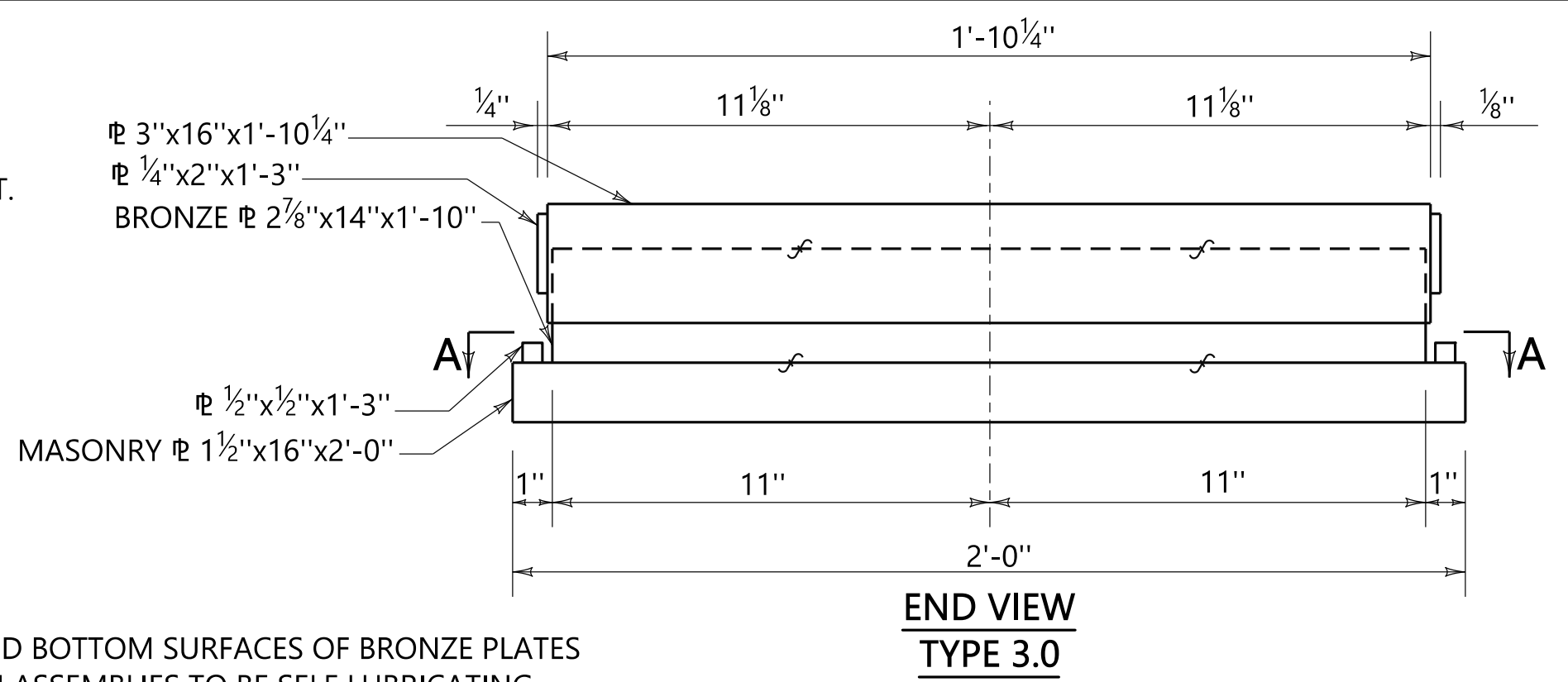
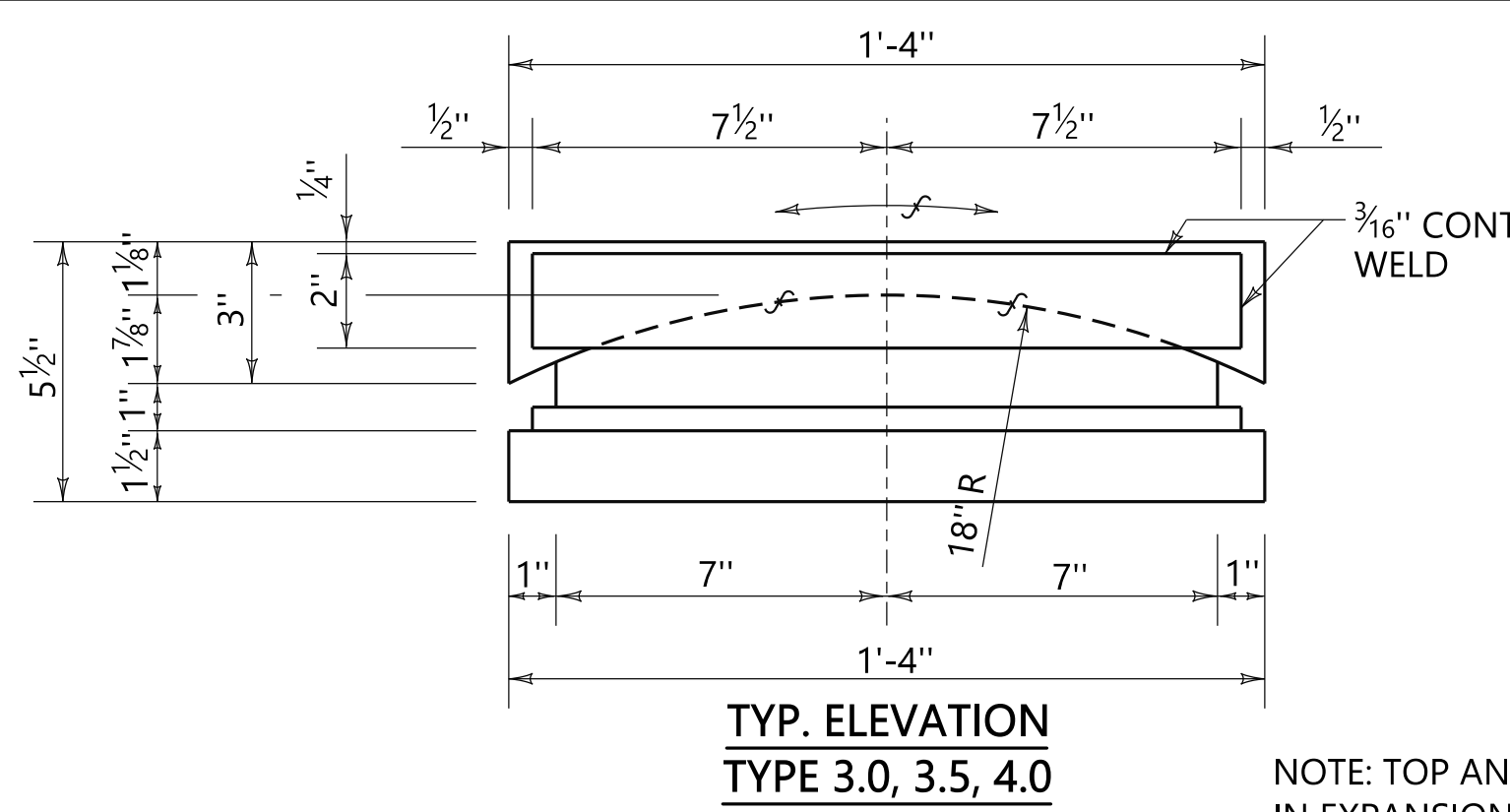
THIS BRIDGE SPECIAL PROJECT DRAWING FOR USE ONLY ON:
PROJECT NO. _____
COUNTY(S) _____

THESE DRAWINGS REPRESENT DESIGNS PREPARED FOR USE BY THE ALABAMA DEPARTMENT OF TRANSPORTATION AND ARE NOT TO BE COPIED, REPRODUCED, ALTERED, OR USED BY ANYONE, OR ANY ORGANIZATION, WITHOUT THE EXPRESSED WRITTEN CONSENT OF THE ALABAMA DEPARTMENT OF TRANSPORTATION REPRESENTATIVE AUTHORIZED TO APPROVE SUCH USE. ANYONE MAKING UNAUTHORIZED USE OF THESE DRAWINGS MAY BE PROSECUTED TO THE FULLEST EXTENT OF THE LAW.

SHOE ASSEMBLIES WITH BRONZE BEARING PLATE 400,000# MAXIMUM REACTION

PLOTTED: 19-Nov-20 at 13:17
 \\brvms002\Bridges\Standards\Special\Bridges\Special DGN Files\2021 DGN\5 Miscellaneous Details\I-100.dgn
 SHEET REFERENCE
 0 1" 2"

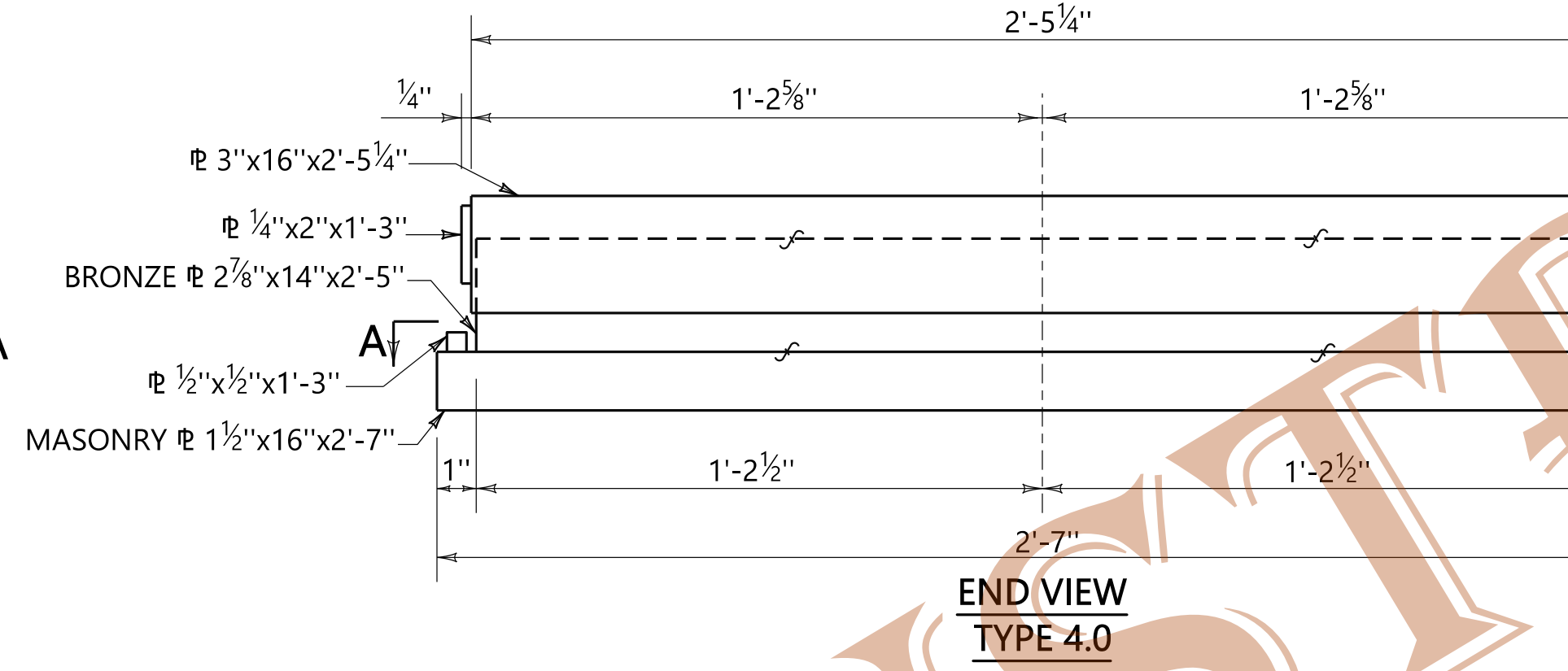
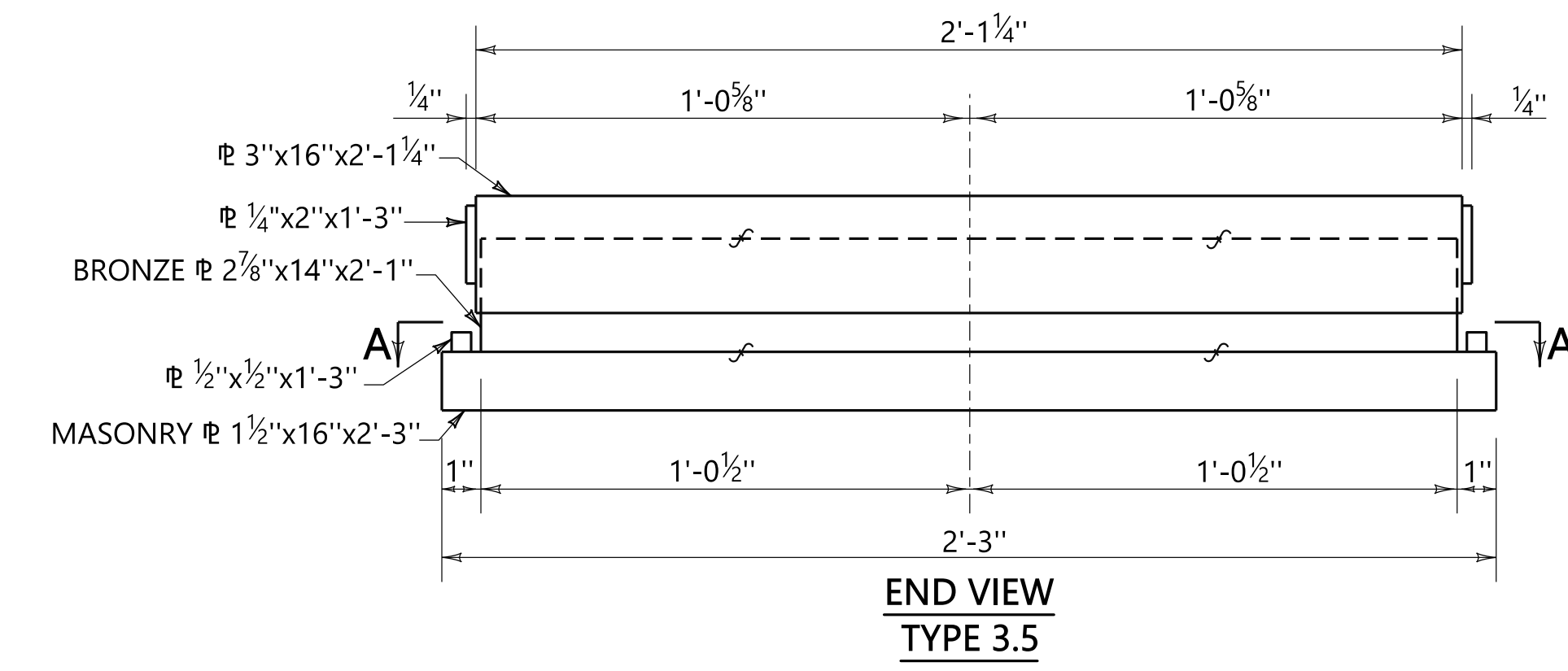
REFERENCE PROJECT NUMBER	FISCAL YEAR	SHEET NUMBER
--------------------------	-------------	--------------



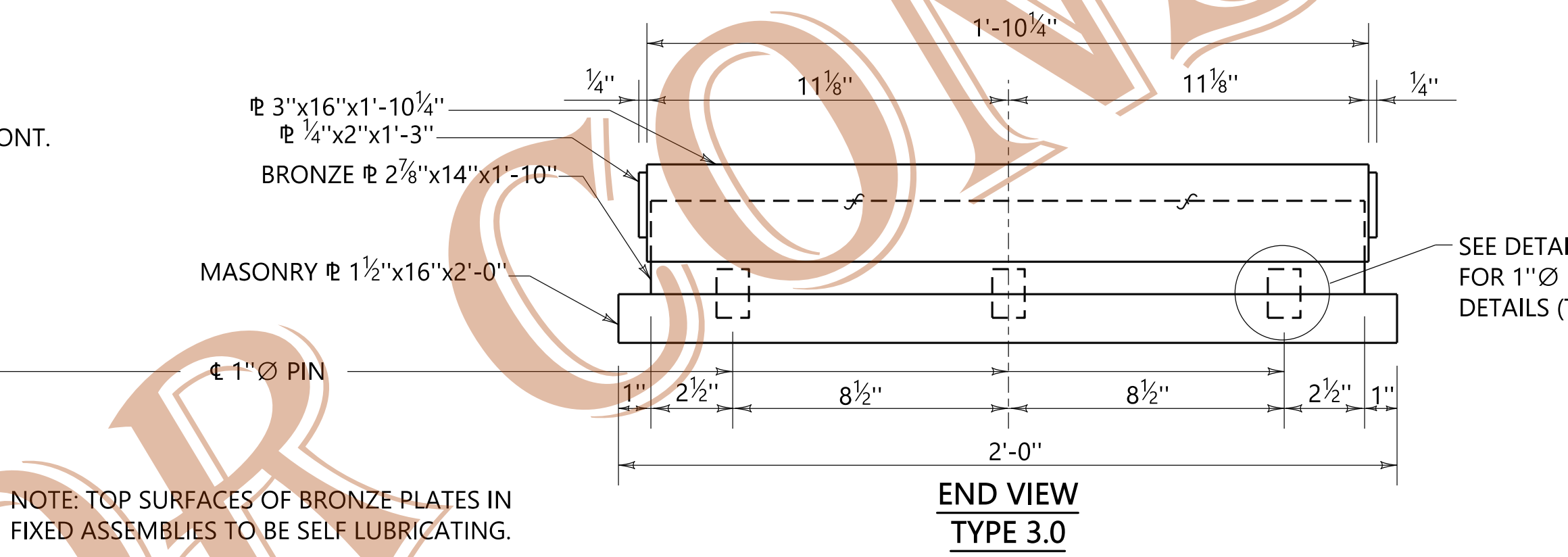
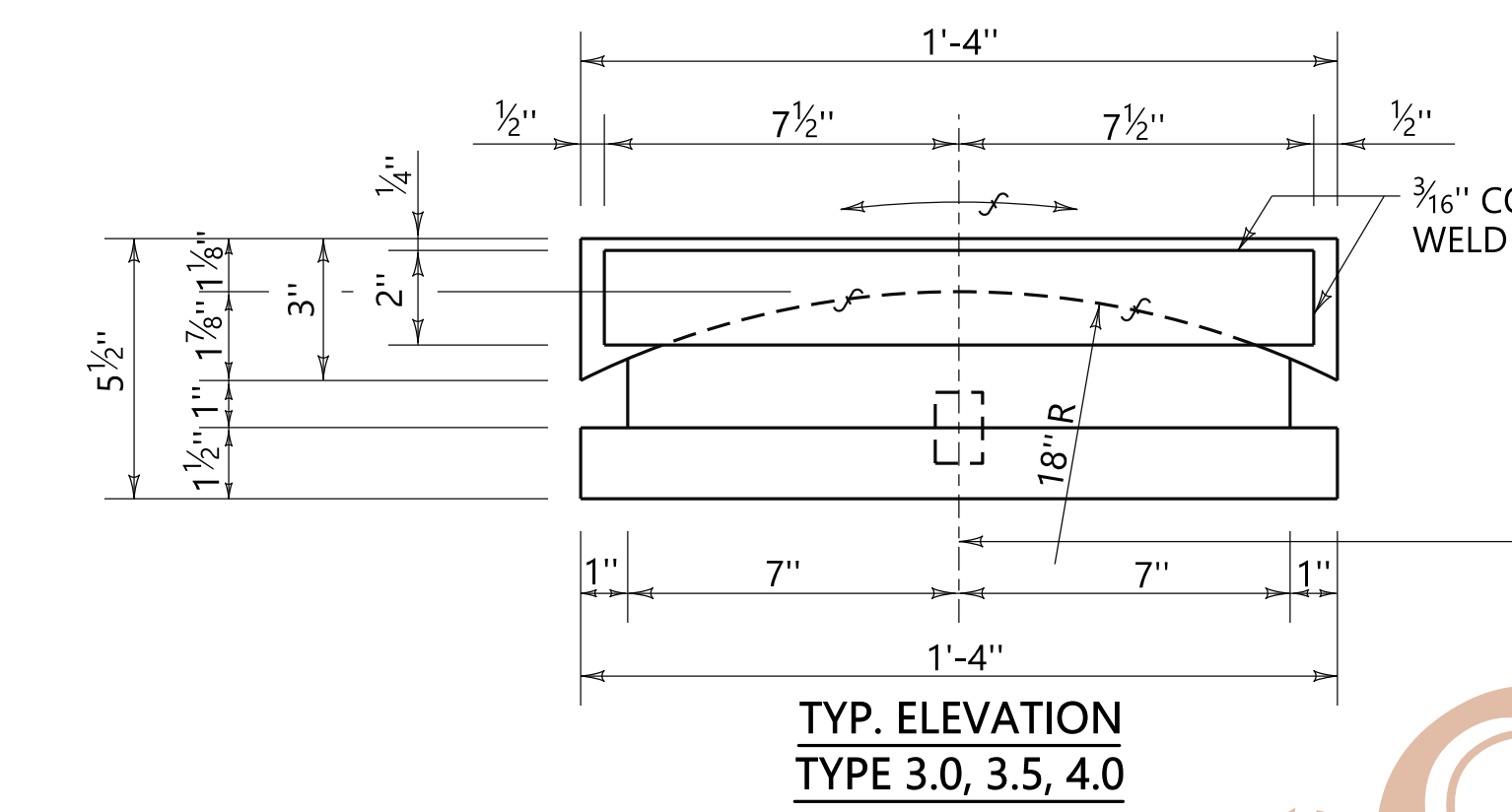
SKEW ANGLE	SHOE TYPE 1.0 DIMENSIONS			SHOE TYPE 1.5 DIMENSIONS		
	▲ A	▲ B	▲ C	▲ A	▲ B	▲ C
0°-00'	1'-5"	6 3/4"	10 1/2"			
0°-00'~22°-30'	1'-5"	6 3/4"	10 1/2"			
22°-30'~30°-00'	1'-7"	7 1/2"	11 1/2"			
30°-00'~37°-30'	1'-9"	8 3/8"	11'-0 3/8"	2'-0"	11 3/8"	1'-0 13/16"
37°-30'~45°-00'	2'-0"	9 3/8"	11'-2 1/8"	2'-3"	11'-0 3/16"	1'-2 13/16"

SHOE TYPE 1.0, 1.5, 2.0, 2.5 DIMENSIONS			SHOE TYPE 3.0, 3.5, 4.0 DIMENSIONS		
D	E	* F	D	E	* F
5 1/2"	7 1/2"	4"	6 1/2"	8 1/2"	5"

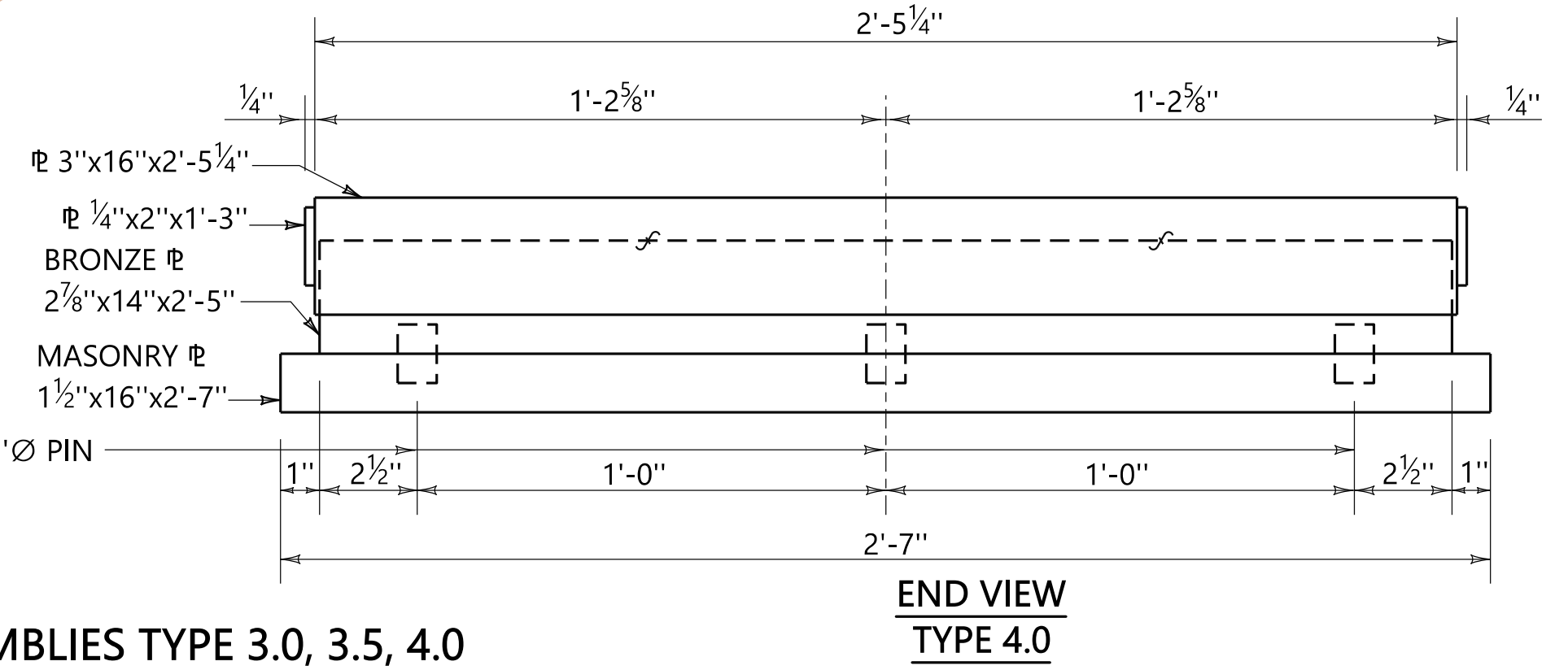
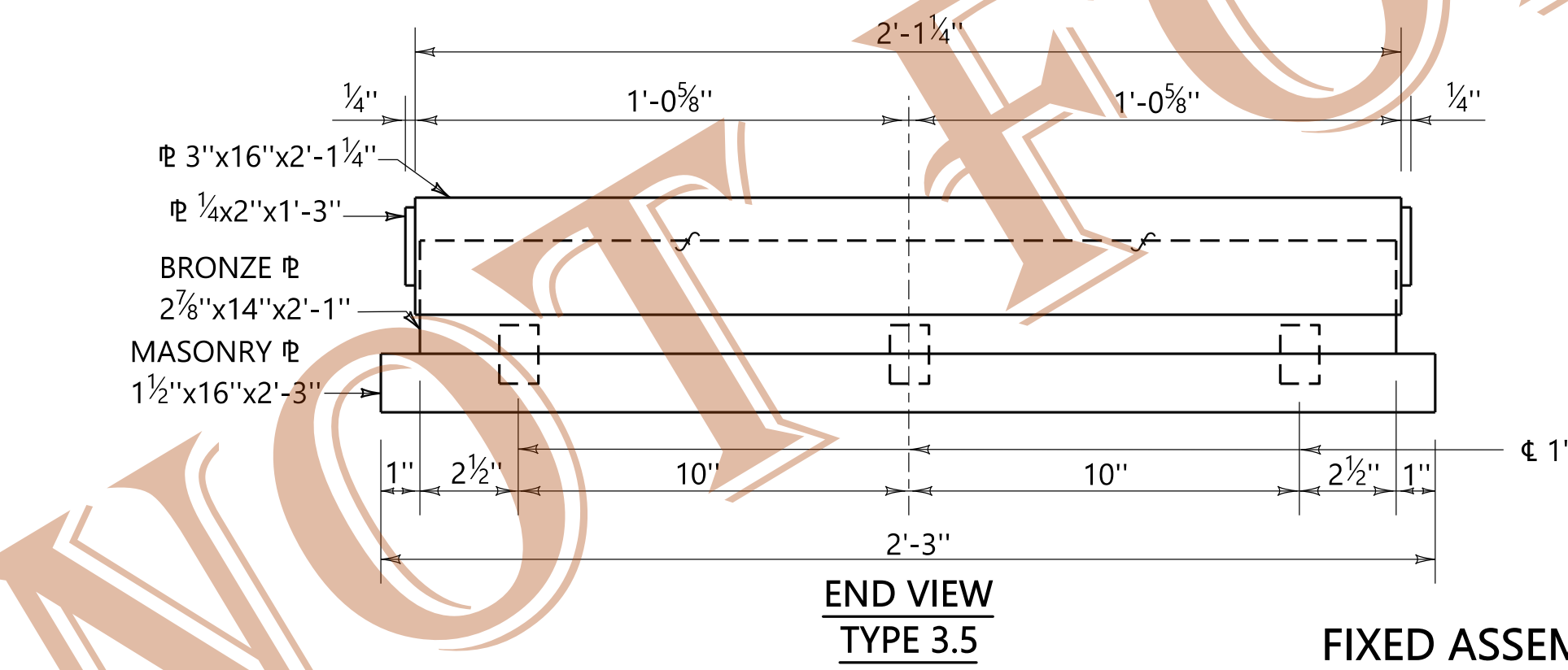
NOTE: TOP AND BOTTOM SURFACES OF BRONZE PLATES IN EXPANSION ASSEMBLIES TO BE SELF LUBRICATING.



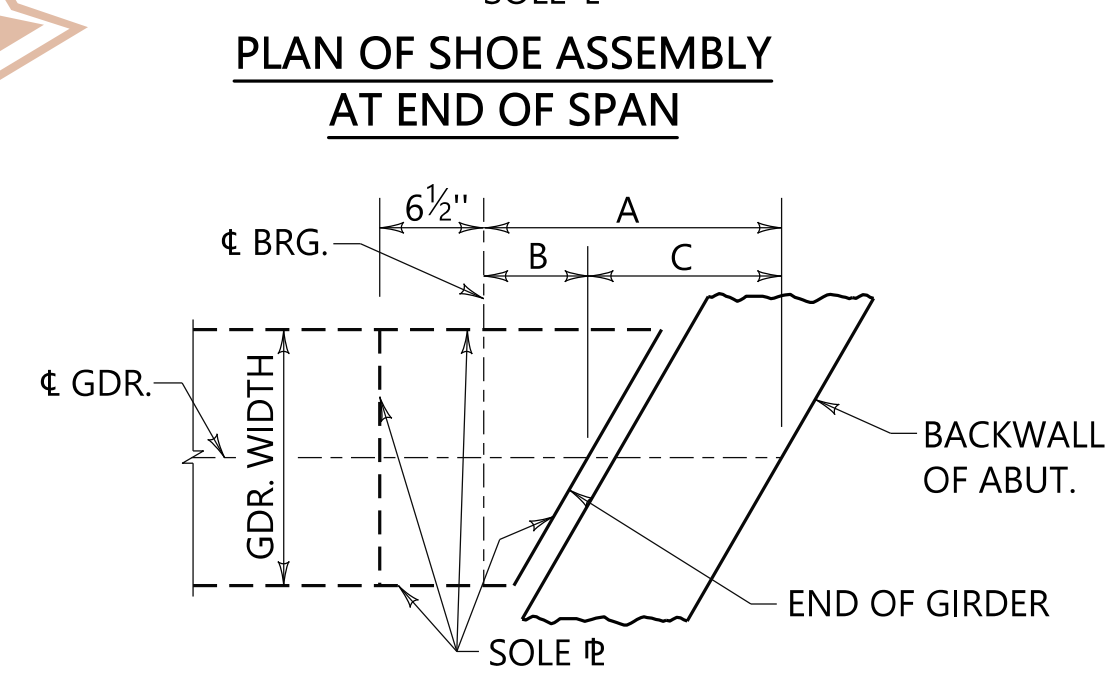
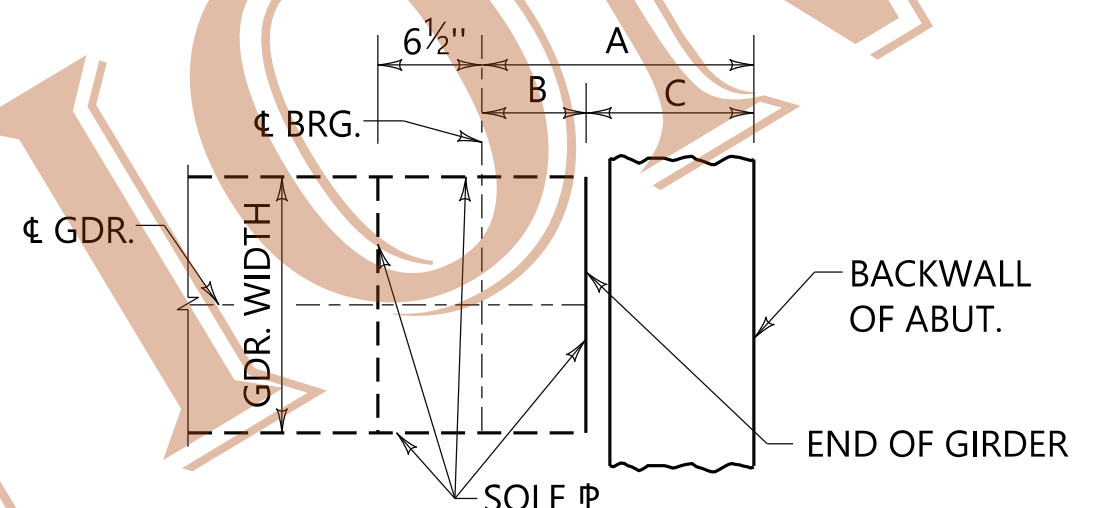
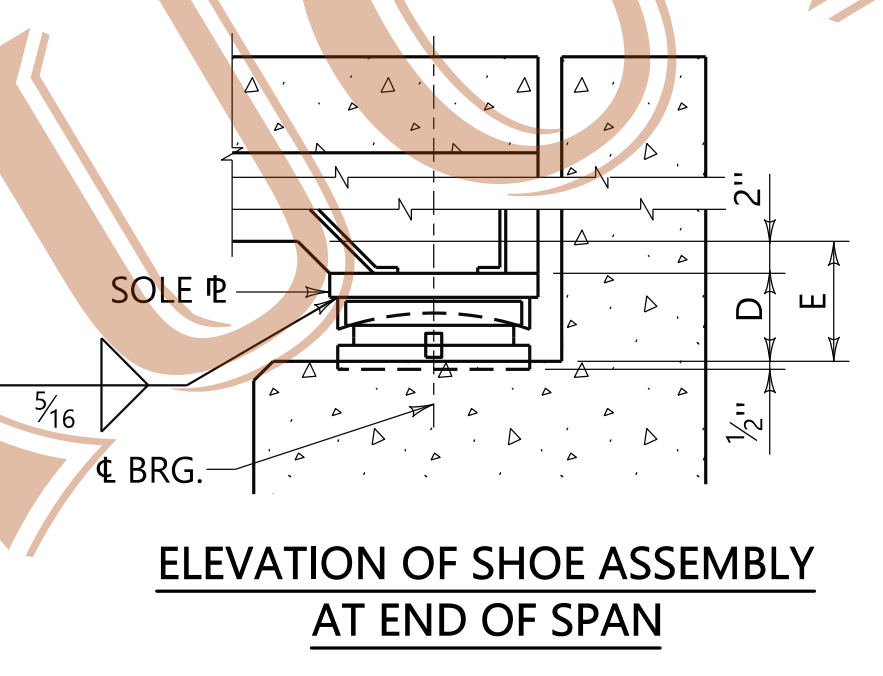
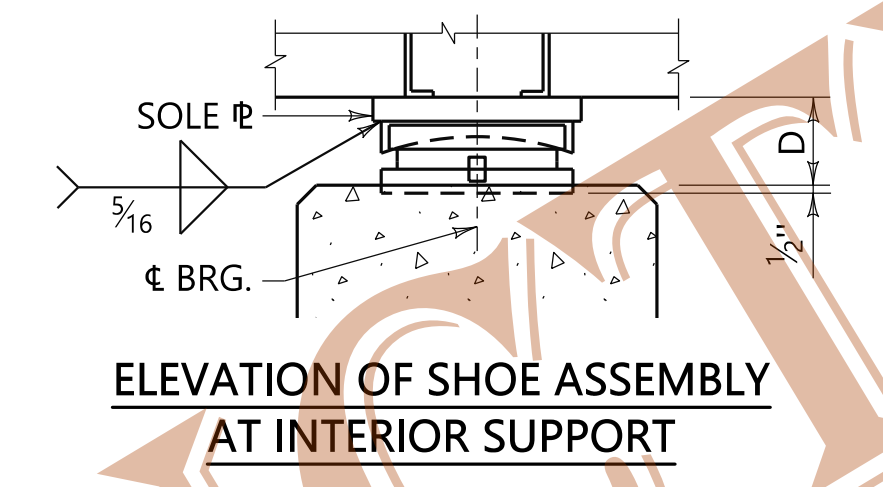
EXPANSION ASSEMBLIES TYPE 3.0, 3.5, 4.0



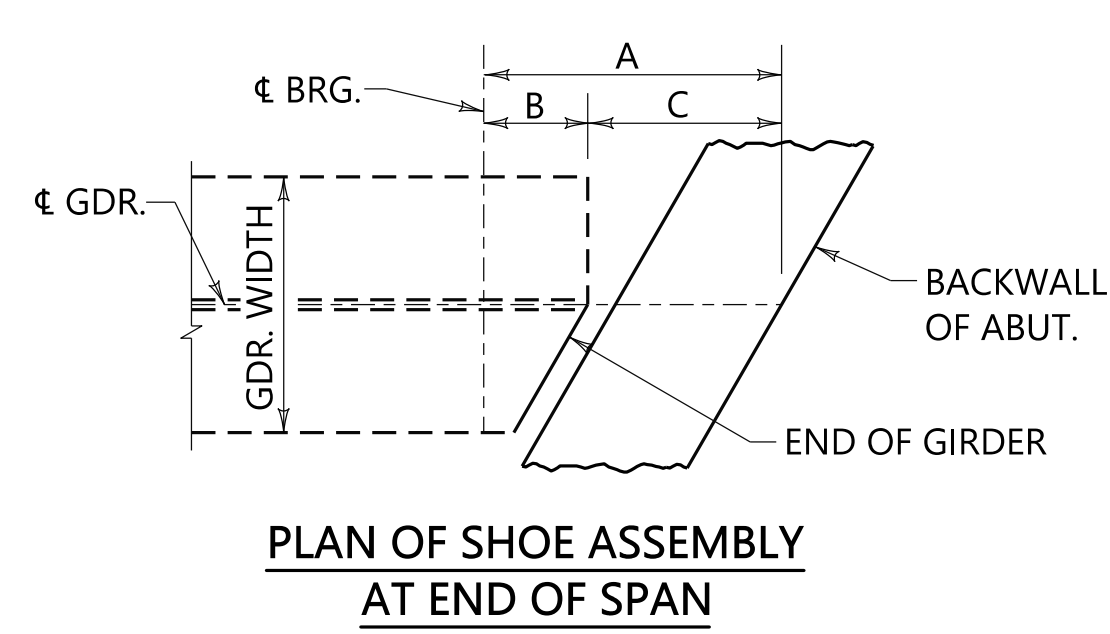
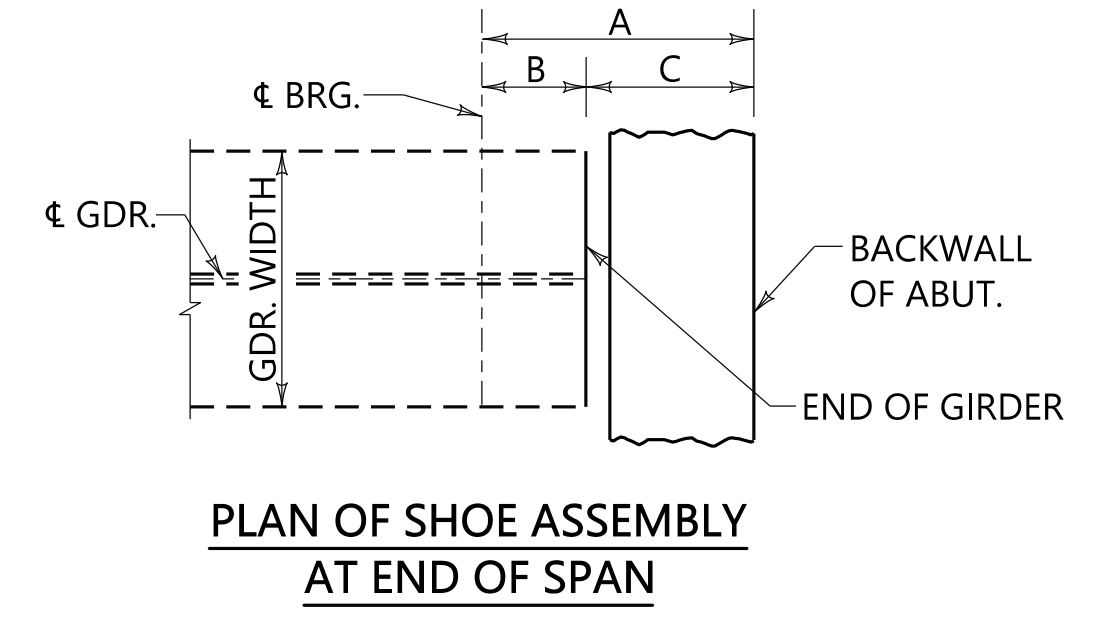
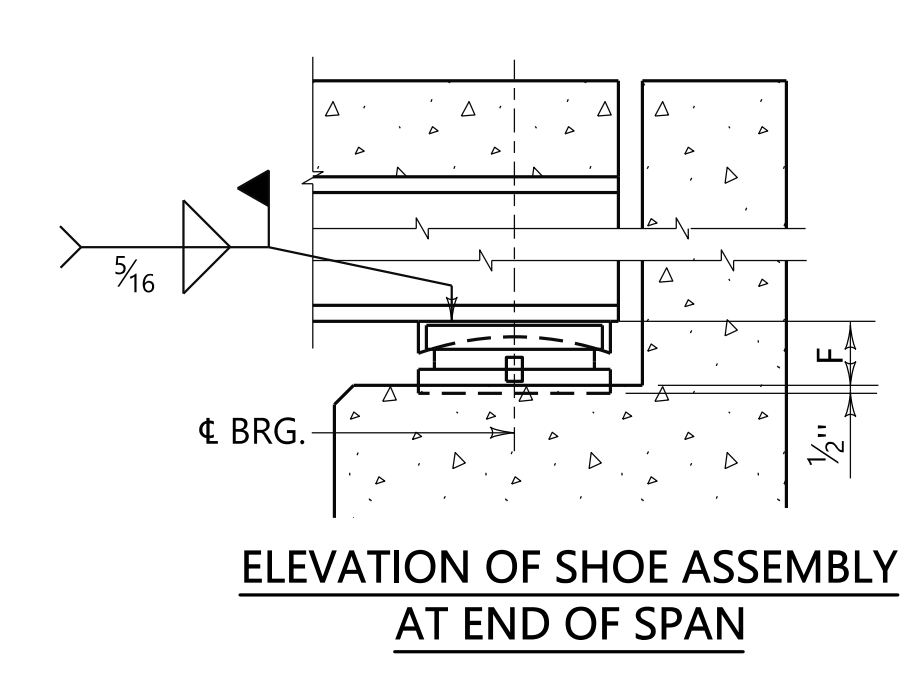
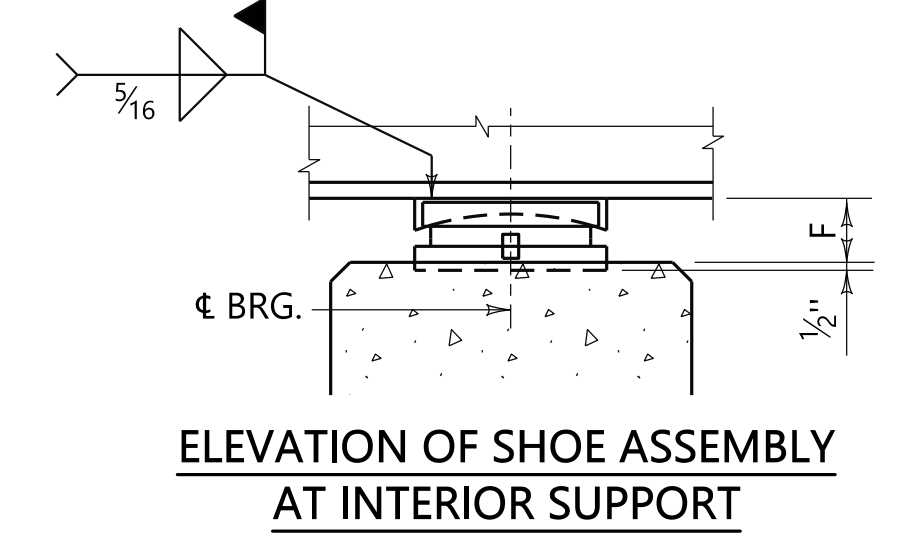
NOTE: TOP SURFACES OF BRONZE PLATES IN FIXED ASSEMBLIES TO BE SELF LUBRICATING.



FIXED ASSEMBLIES TYPE 3.0, 3.5, 4.0



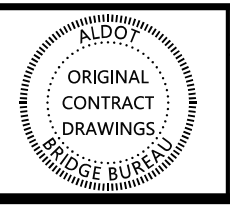
CONCRETE GIRDER



STEEL GIRDER

NOTES

1. SEE BRIDGE DRAWINGS FOR ANY VARIATIONS TO THESE DIMENSIONS.
- * 2. SEE NOTE 2 ON SHEET 1 OF 2 FOR APPLICATION OF DIMENSION F.
3. SEE SHEET 1 OF 2 FOR DETAIL "X" AND SECTION A-A.
4. SET ALL MASONRY PLATES 1/2" INTO CAP.
5. SEE SHEET 1 OF 2 FOR APPROXIMATE QUANTITIES.



REVISIONS

THIS BRIDGE SPECIAL PROJECT DRAWING FOR USE ONLY ON:
 PROJECT NO. _____
 COUNTY(S) _____

THESE DRAWINGS REPRESENT DESIGNS PREPARED FOR USE BY THE ALABAMA DEPARTMENT OF TRANSPORTATION AND ARE NOT TO BE COPIED, REPRODUCED, ALTERED, OR USED BY ANYONE, OR ANY ORGANIZATION, WITHOUT THE EXPRESSED WRITTEN CONSENT OF THE ALABAMA DEPARTMENT OF TRANSPORTATION REPRESENTATIVE AUTHORIZED TO APPROVE SUCH USE. ANYONE MAKING UNAUTHORIZED USE OF THESE DRAWINGS MAY BE PROSECUTED TO THE FULLEST EXTENT OF THE LAW.

SHOE ASSEMBLIES WITH BRONZE BEARING PLATE 400,000# MAXIMUM REACTION