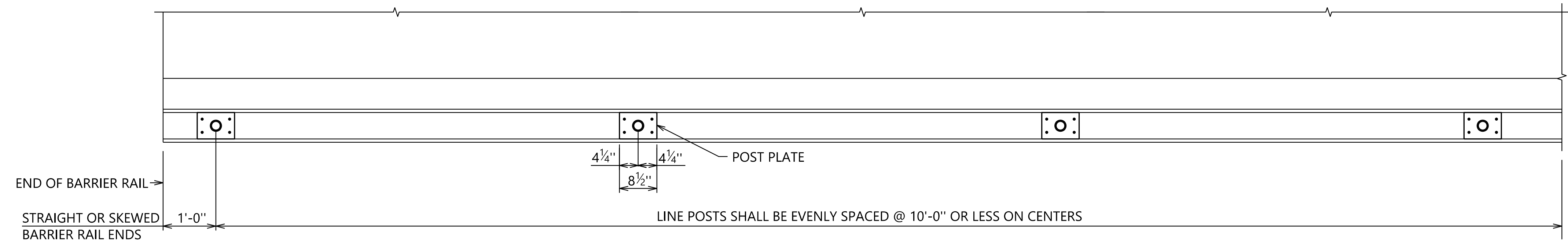
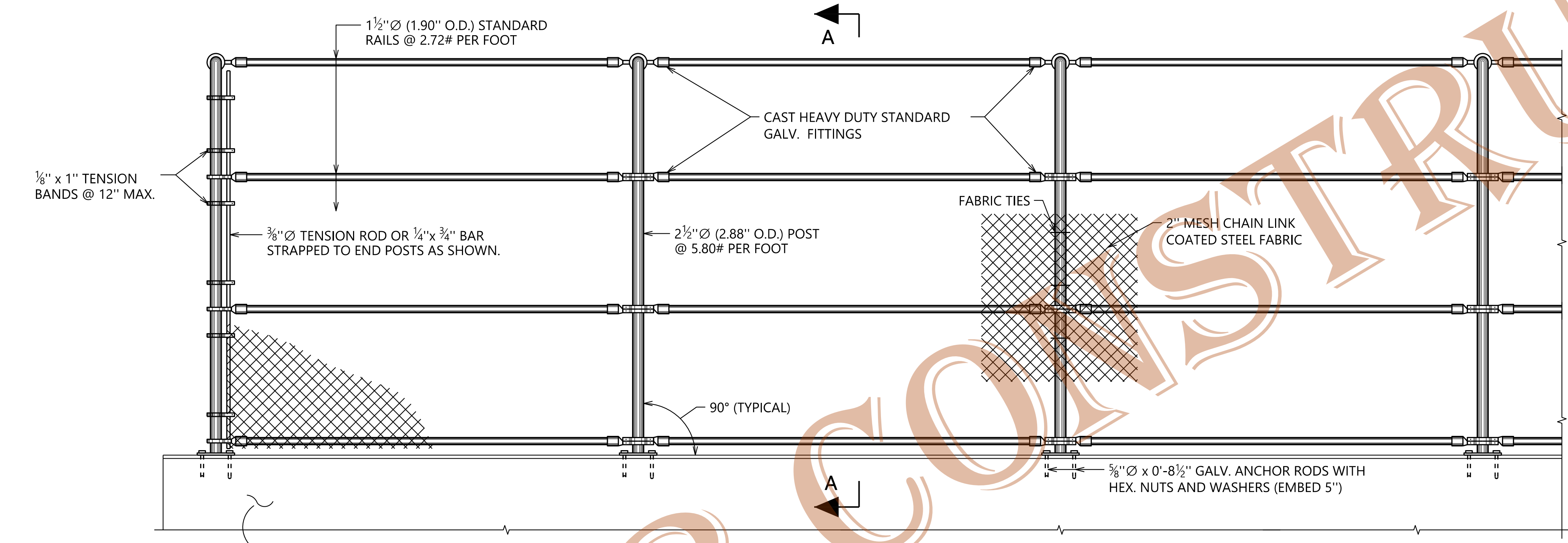


2"
1"
0
SHEET REFERENCE

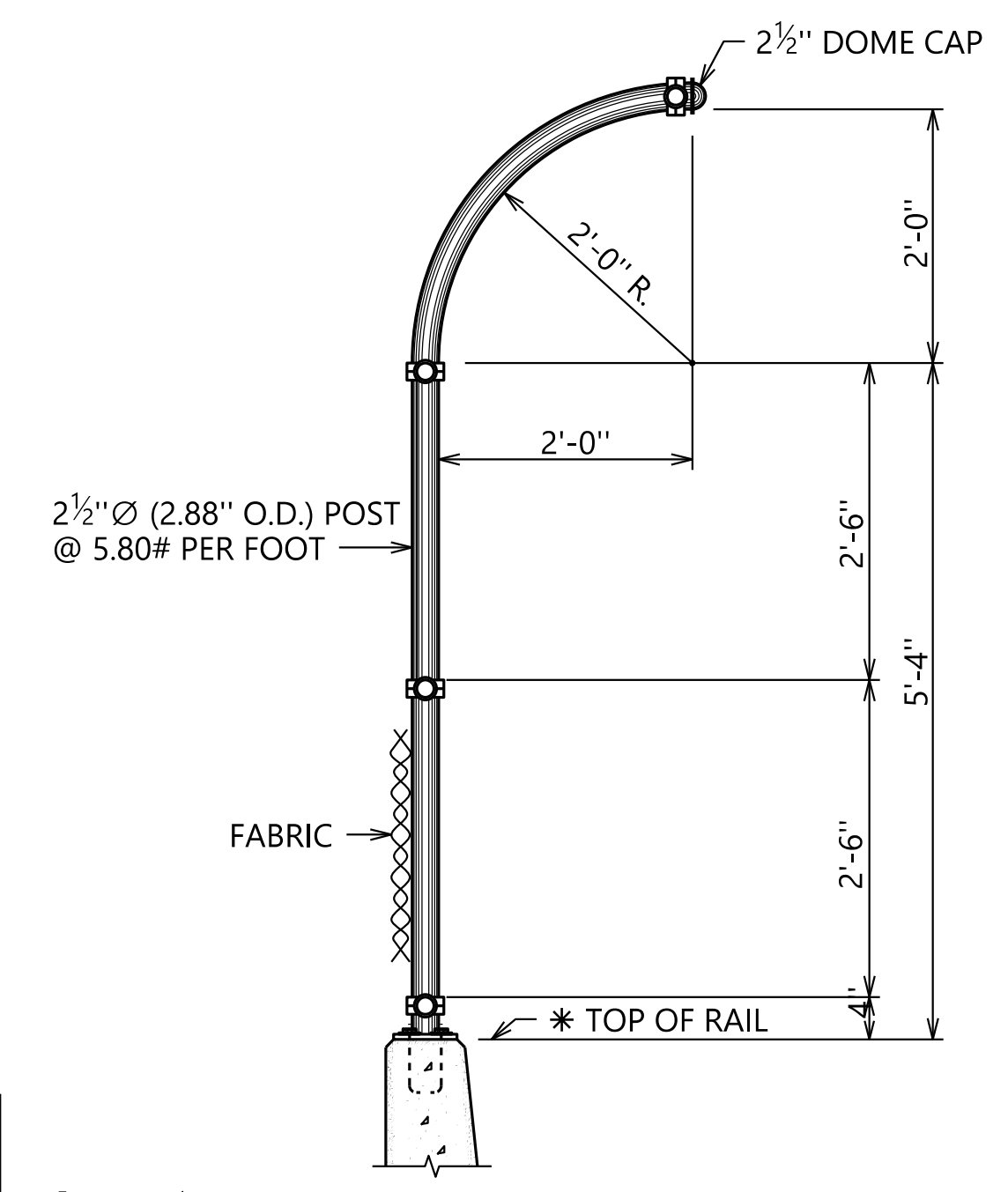


PLAN OF POST PLATES
SCALE: 3/4" = 1'-0"

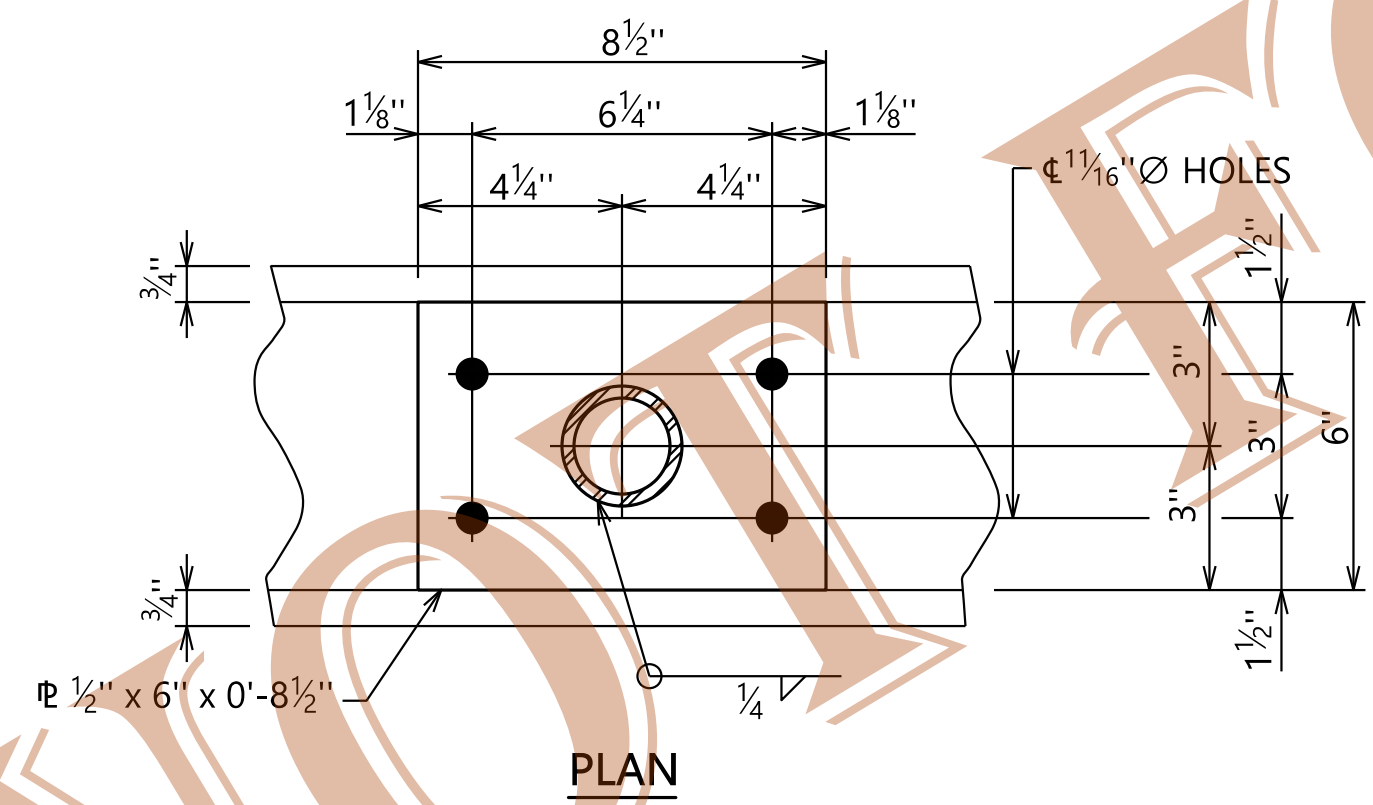


ELEVATION OF FENCE
SCALE: 3/4" = 1'-0"

- NOTES**
1. ALL POST AND FRAMES TO BE SET AS SHOWN IN ELEVATION ABOVE.
 2. FABRIC SHALL BE FASTENED TO LINE POST WITH PROPER TIES SPACED APPROX. 12" APART. FABRIC SHALL BE ATTACHED TO RAILS WITH PROPER TIES SPACED APPROX 15" APART.
 3. ALL ROUGH EDGES OF FABRIC OR TIE TWIST ENDS SHALL BE BENT BACK AWAY FROM PEDESTRIAN SIDE OF WALKWAYS.
 4. OMITTED
 5. ALL MATERIALS FOR FENCE SHALL BE IN ACCORDANCE WITH THE ALABAMA DEPARTMENT OF TRANSPORTATION STANDARD SPECIFICATIONS SECTION 871. ALL MISCELLANEOUS STEEL, SEE SUB-ARTICLE 634.02(b).
 6. TEMPLATES, SUPPLIED BY THE MATERIALS MANUFACTURER, SHALL BE USED TO PLACE ALL 5/8" Ø ANCHOR RODS FOR POST PLATES.
 7. PAYMENT FOR FENCE SHALL BE PAY ITEM 634E "INDUSTRIAL FENCE, 7.33 FEET HIGH, SPECIAL MOUNTING - PER LIN. FT.". THIS ITEM SHALL CONSIST OF FURNISHING AND PLACING THE FENCE, WHICH INCLUDES THE WIRE FABRIC, ALL THE PIPE, FRAMEWORK, ALL THE FASTENERS, PLATES, STRAPS AND CONNECTORS NECESSARY FOR THIS INSTALLATION, COMPLETE AND IN PLACE.
 8. THE CONTRACTOR MAY SUBSTITUTE 5/8" Ø x 8" ALL THREADED, GALVANIZED A-36 ANCHOR RODS IN 1 1/16" x 6" DRILLED HOLES IN LIEU OF THE ANCHORAGE DETAILS SHOWN ON THIS SHEET. THIS ALTERNATE ANCHORAGE SYSTEM MUST BE EPOXIED IN WITH ONE OF THE APPROVED CONCRETE ANCHORING SYSTEMS IN THE ALDOT "MATERIALS, SOURCES AND DEVICES WITH SPECIAL ACCEPTANCE REQUIREMENTS" MANUAL, SECTION II-15. PULL OUT TEST MAY BE REQUIRED AT THE DISCRETION OF THE ENGINEER.
 - * 9. INDUSTRIAL FENCE MAY BE MOUNTED TO THE BRIDGE DECK IF SHOWN ON THE CONTRACT PLANS.



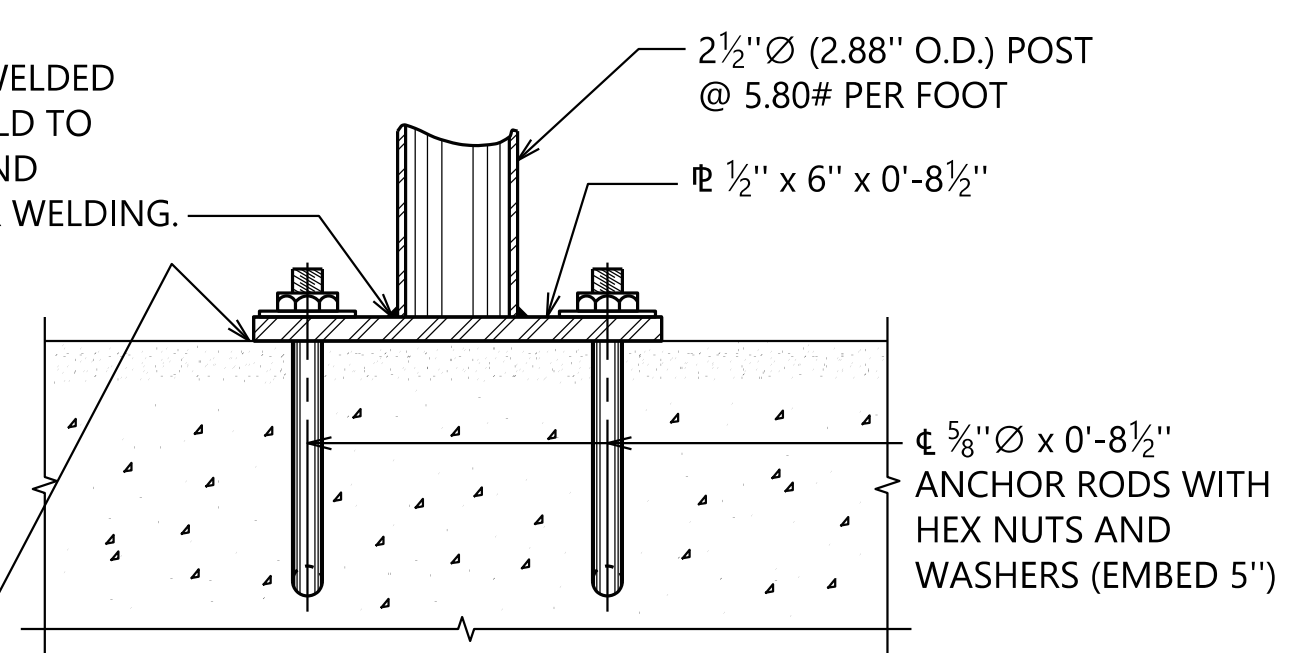
SECTION A-A
SCALE: 3/4" = 1'-0"



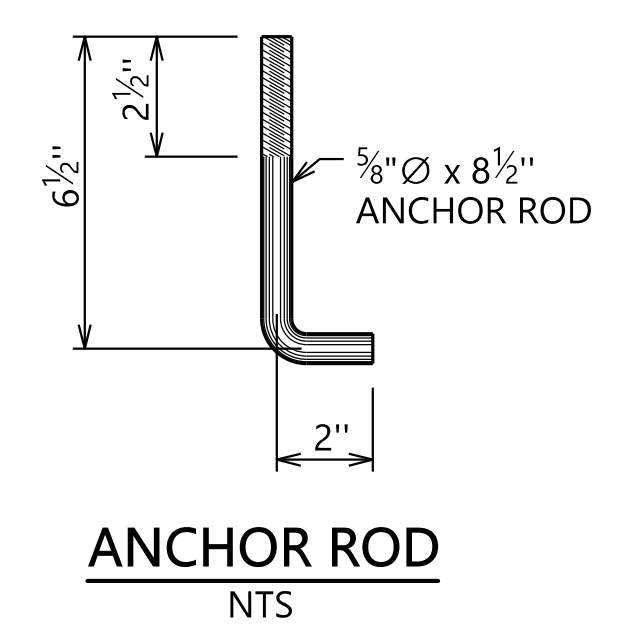
POST PLATE
SCALE: 3" = 1'-0"

1/2" P TO BE SHOP WELDED WITH 1/4" FILLET WELD TO 2 1/2" Ø O.D. POST AND GALVANIZED AFTER WELDING.

GALVANIZED BEVELED WASHERS SHALL BE PROVIDED AS SHIMS WHERE REQUIRED FOR PROPER POST ALIGNMENT. EPOXY CEMENT SHALL BE REQUIRED TO LEVEL CONCRETE UNDER POST P IF A GREATER THAN 1/8" THICK WASHER IS NEEDED TO ALIGN THE POSTS.

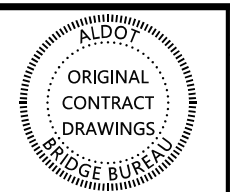


ELEVATION



ANCHOR ROD
NTS

PLOTTED: 19-Nov-20 at 13:10 \\bnvms002\Bridges\Standard\Special\Bridges\Special DGN Files\2021 DGN\4 Industrial Fence Standard Details for Bridge Sidewalks\LRFD IFS-2.dgn



REVISIONS

THIS BRIDGE SPECIAL PROJECT DRAWING FOR USE ONLY ON:
PROJECT NO. _____
COUNTY(S) _____

THESE DRAWINGS REPRESENT DESIGNS PREPARED FOR USE BY THE ALABAMA DEPARTMENT OF TRANSPORTATION AND ARE NOT TO BE COPIED, REPRODUCED, ALTERED, OR USED BY ANYONE, OR ANY ORGANIZATION, WITHOUT THE EXPRESSED WRITTEN CONSENT OF THE ALABAMA DEPARTMENT OF TRANSPORTATION REPRESENTATIVE AUTHORIZED TO APPROVE SUCH USE. ANYONE MAKING UNAUTHORIZED USE OF THESE DRAWINGS MAY BE PROSECUTED TO THE FULLEST EXTENT OF THE LAW.

INDUSTRIAL FENCE STANDARD
DETAILS FOR BRIDGE SIDEWALKS

BRIDGE SPECIAL PROJECT DRAWING	
IFS-2	SHEET 1 OF 1

ASSISTANT BRIDGE ENGINEER <i>[Signature]</i> DATE: 11/20/2020	BRIDGE ENGINEER <i>[Signature]</i> DATE: 11/20/2020
---	---