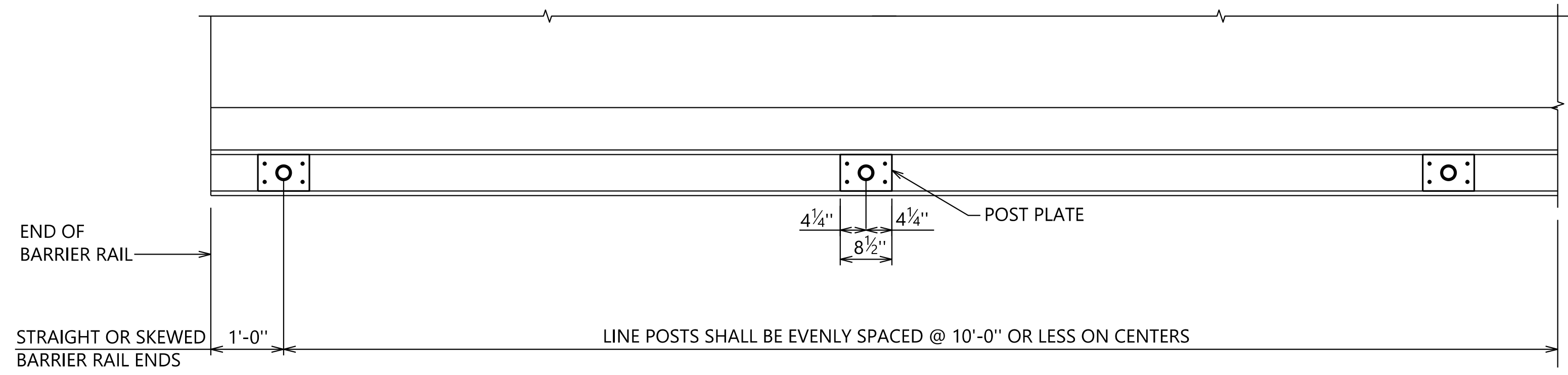
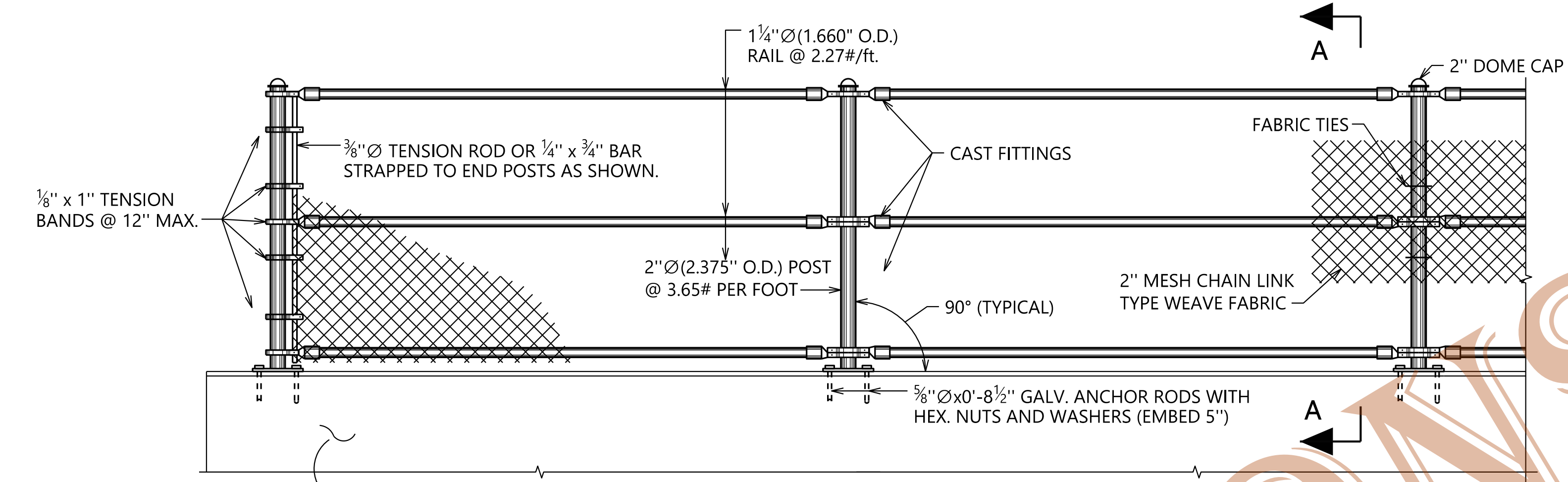


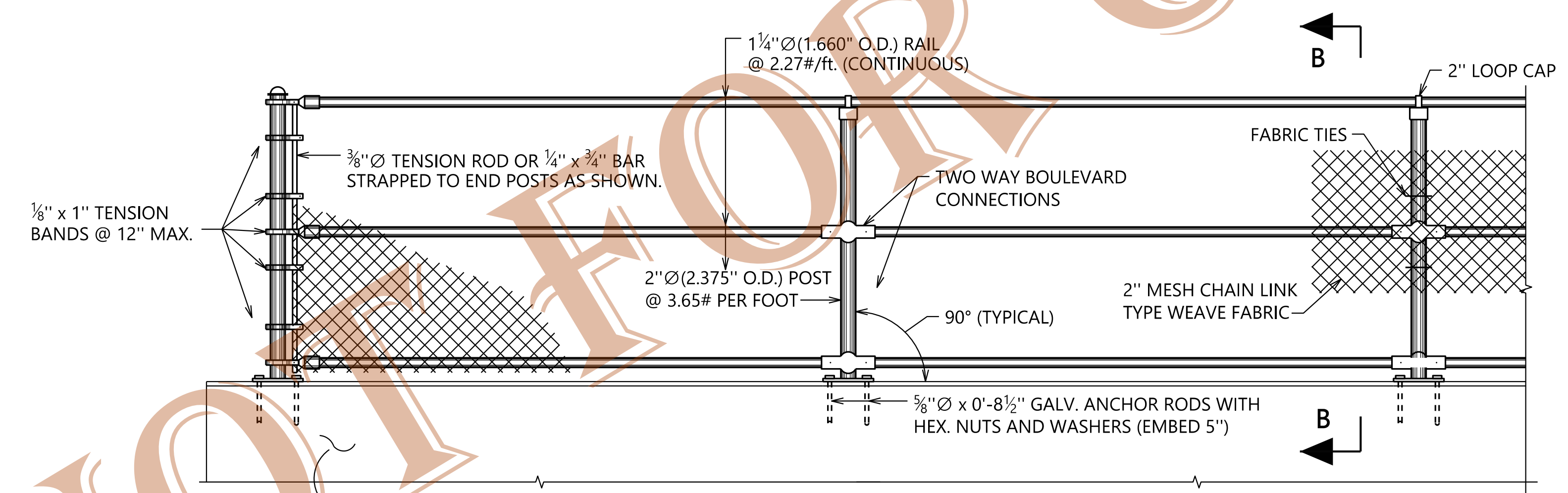
2"
1"
0



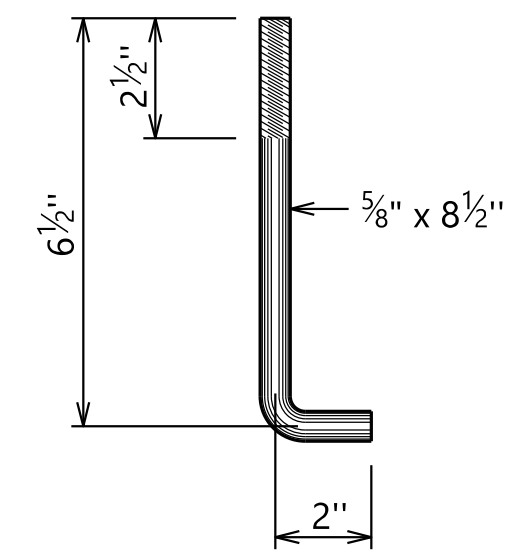
PLAN OF POST PLATES
SCALE: 3/4"=1'-0"



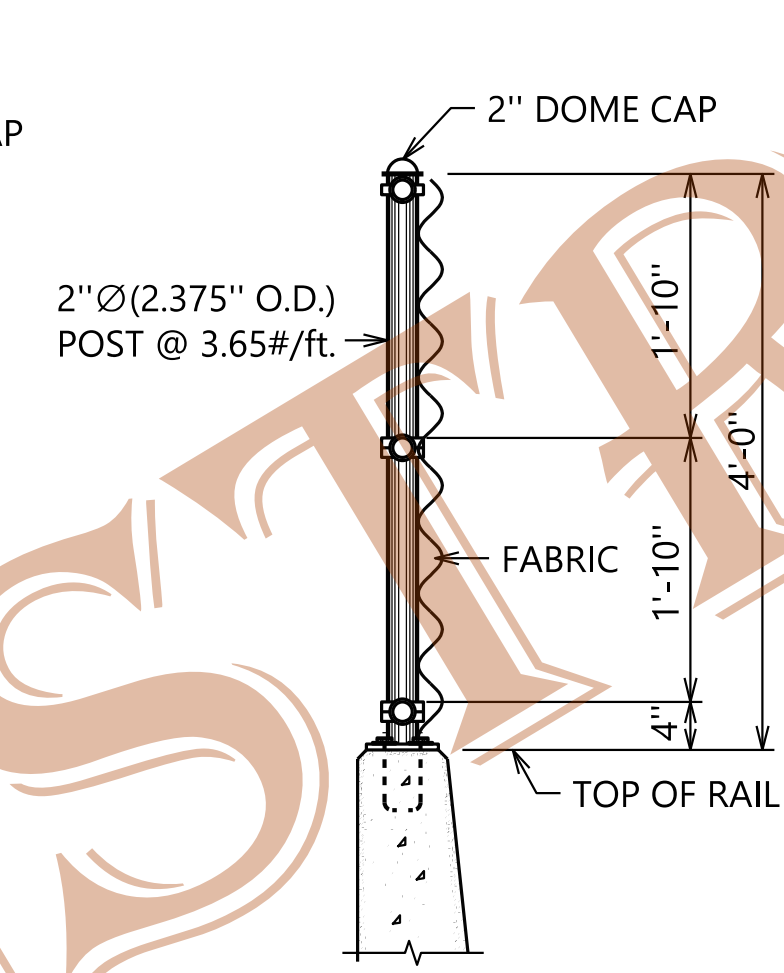
ELEVATION OF FENCE
SCALE: 3/4"=1'-0"



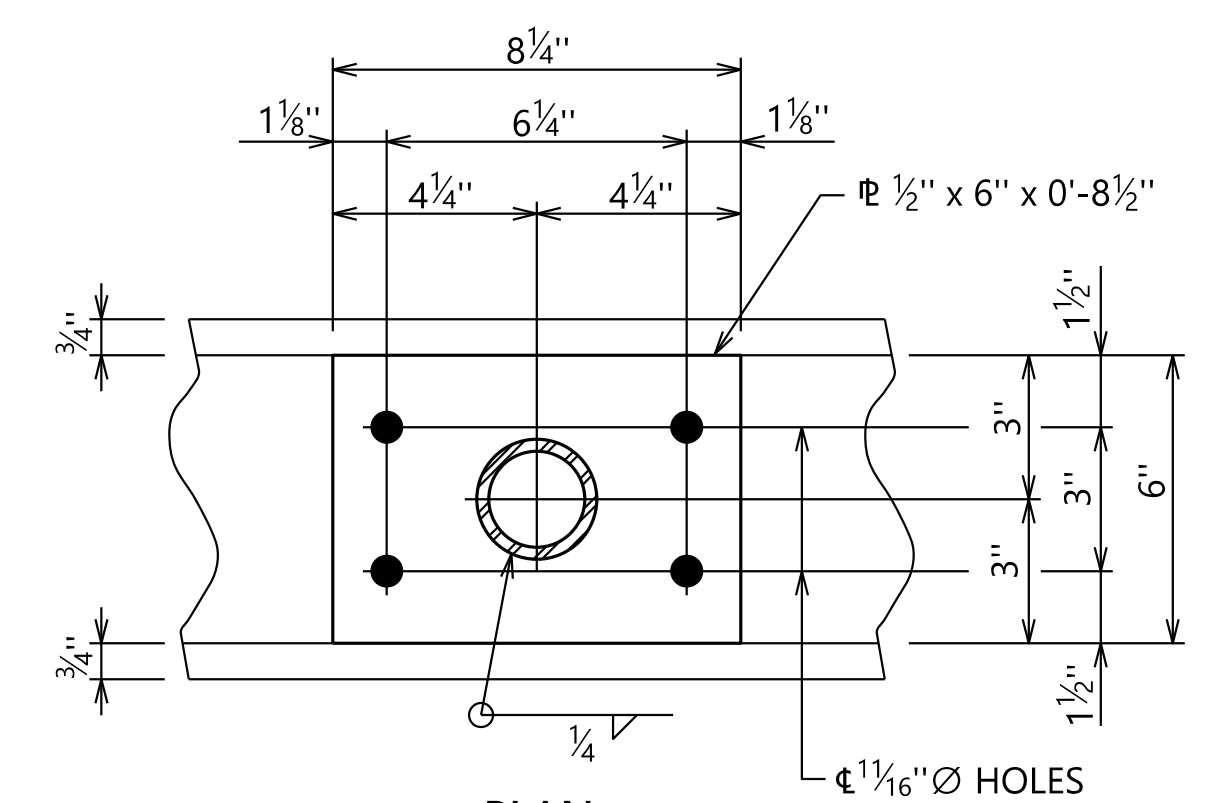
ELEVATION OF FENCE (OPTIONAL)
SCALE: 3/4"=1'-0"



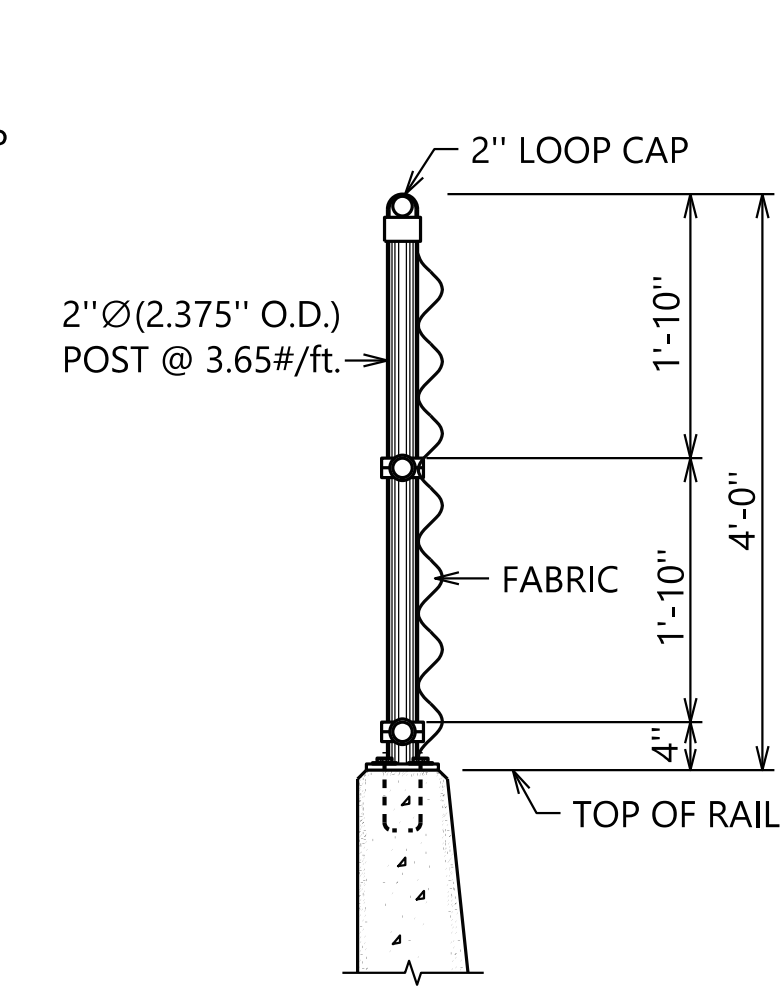
ANCHOR ROD NTS



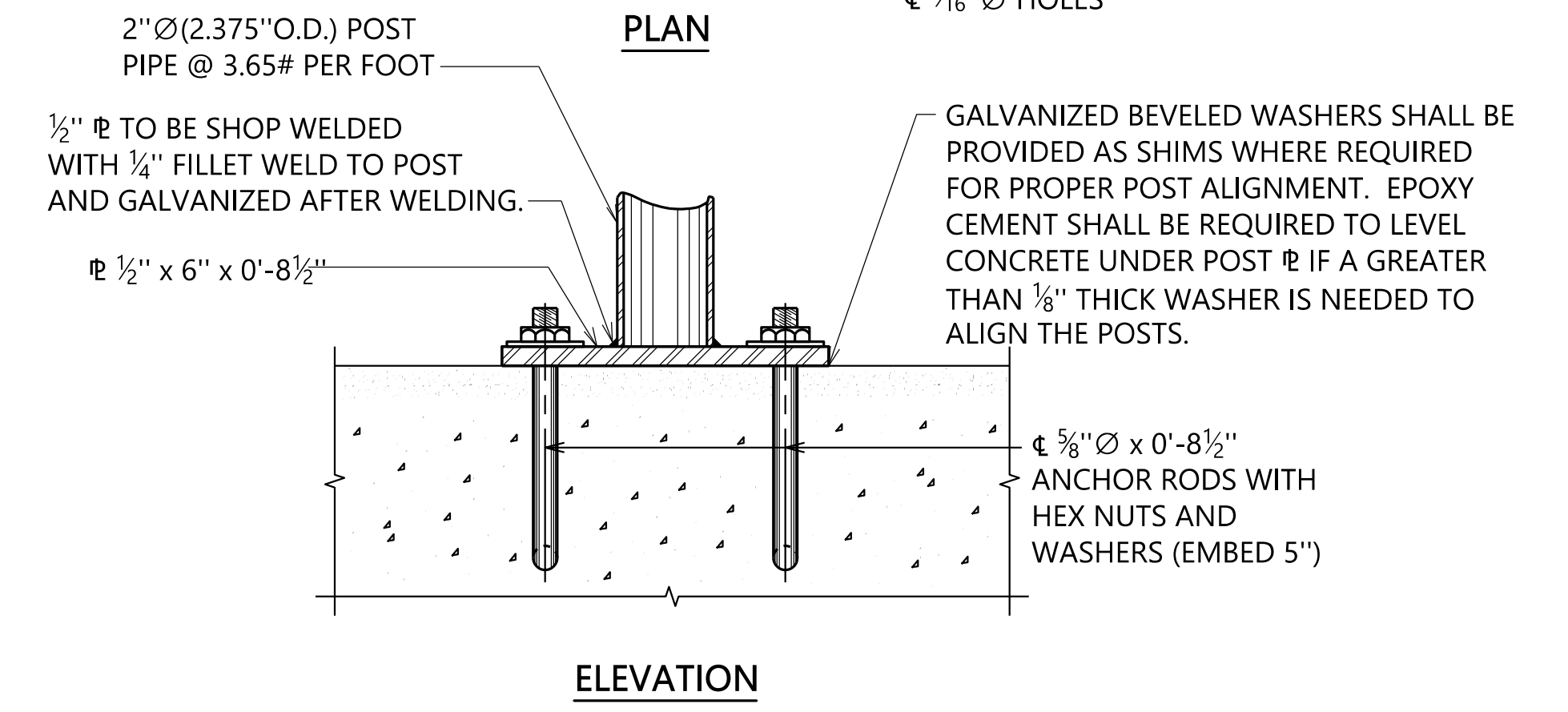
SECTION A-A
SCALE: 3/4"=1'-0"



PLAN



SECTION B-B
SCALE: 3/4"=1'-0"



ELEVATION

POST PLATE
SCALE: 3"=1'-0"

NOTES

1. ALL POST AND FRAMES TO BE SET AS SHOWN IN ELEVATION VIEWS ON THIS SHEET.
2. FABRIC SHALL BE FASTENED TO LINE POSTS WITH PROPER TIES SPACED APPROX. 12" APART. FABRIC SHALL BE ATTACHED TO RAILS WITH PROPER TIES SPACED APPROX. 15" APART.
3. ALL ROUGH EDGES OF FABRIC OR TIE TWIST ENDS SHALL BE BENT BACK AWAY FROM PEDESTRIAN SIDE OF WALKWAYS.
4. ALL MATERIALS FOR FENCE SHALL BE IN ACCORDANCE WITH THE ALABAMA DEPARTMENT OF TRANSPORTATION STANDARD SPECIFICATIONS SECTION 871. ALL MISCELLANEOUS STEEL, SEE SUB-ARTICLE 634.02(b).
5. TEMPLATES, SUPPLIED BY THE MATERIALS MANUFACTURER, SHALL BE USED TO PLACE ALL 5/8" Ø ANCHOR RODS FOR POST PLATES.
6. PAYMENT FOR FENCE SHALL BE PAY ITEM 634E "INDUSTRIAL FENCE, 4.0 FEET HIGH, SPECIAL MOUNTING - PER LIN. FT." THIS ITEM SHALL CONSIST OF FURNISHING AND PLACING THE FENCE, WHICH INCLUDES THE WIRE FABRIC, ALL THE PIPE, FRAMEWORK, ALL THE FASTENERS, PLATES, STRAPS AND CONNECTORS NECESSARY FOR THIS INSTALLATION, COMPLETE AND IN PLACE.
7. THE CONTRACTOR MAY SUBSTITUTE 5/8" Ø x 8" ALL THREADED, GALVANIZED A-36 ANCHOR RODS IN 1/4" x 6" DRILLED HOLES IN LIEU OF THE ANCHORING DETAILS SHOWN ON THIS SHEET. THIS ALTERNATE ANCHORAGE SYSTEM MUST BE EPOXIED IN WITH ONE OF THE APPROVED CONCRETE ANCHORING SYSTEMS IN THE ALDOT "MATERIALS, SOURCES AND DEVICES WITH SPECIAL ACCEPTANCE REQUIREMENTS" MANUAL, SECTION II-15. PULL OUT TEST MAY BE REQUIRED AT THE DISCRETION OF THE ENGINEER.

PLOTTED: 19-Nov-20 at 13:10
 \\bnvms002\Bridges\Standards\Special\Bridges\Special DGN Files\2021 DGN\4 Industrial Fence Standard Details for Bridge Sidewalks\LRFD IFS-4.dgn

REVISIONS

THIS BRIDGE SPECIAL PROJECT DRAWING FOR USE ONLY ON:
 PROJECT NO. _____
 COUNTY(S) _____

THESE DRAWINGS REPRESENT DESIGNS PREPARED FOR USE BY THE ALABAMA DEPARTMENT OF TRANSPORTATION AND ARE NOT TO BE COPIED, REPRODUCED, ALTERED, OR USED BY ANYONE, OR ANY ORGANIZATION, WITHOUT THE EXPRESSED WRITTEN CONSENT OF THE ALABAMA DEPARTMENT OF TRANSPORTATION REPRESENTATIVE AUTHORIZED TO APPROVE SUCH USE. ANYONE MAKING UNAUTHORIZED USE OF THESE DRAWINGS MAY BE PROSECUTED TO THE FULLEST EXTENT OF THE LAW.

INDUSTRIAL FENCE STANDARD DETAILS
 FOR BRIDGE SIDEWALKS

ASSISTANT BRIDGE ENGINEER DATE 11/20/2020	BRIDGE ENGINEER DATE 11/20/2020
--	--