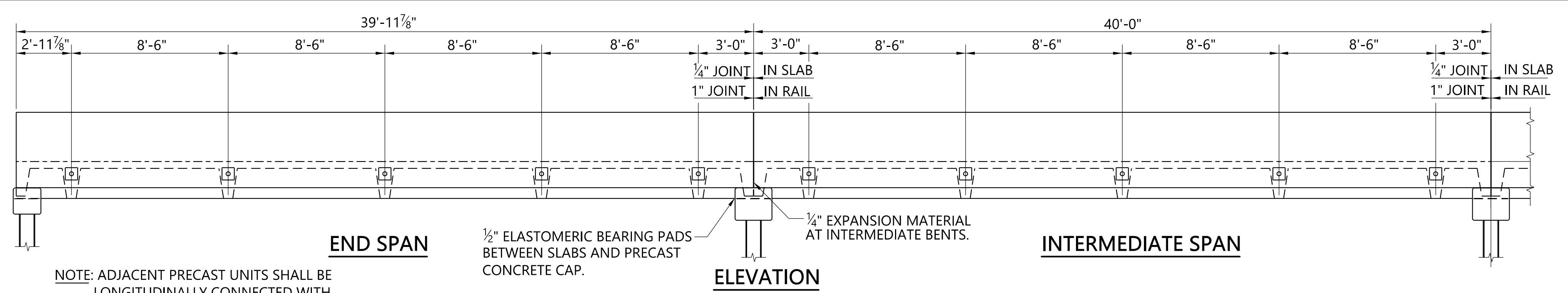


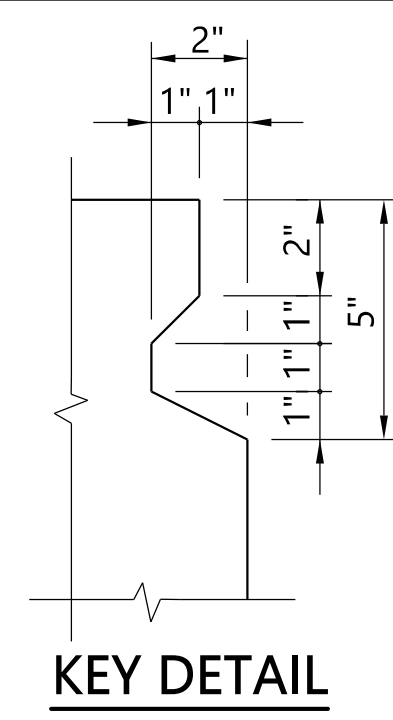
PLOTTED: 07-Jan-22 at 08:56  
 \\brms002\Bridges\StandardSpecial\Bridges\Special DGN Files\Working Folder For Redetailed Precast B5PD(2023)\PC-40.dgn  
 SHEET REFERENCE  
 0 1" 2"

REFERENCE PROJECT NUMBER	FISCAL YEAR	SHEET NUMBER
--------------------------	-------------	--------------

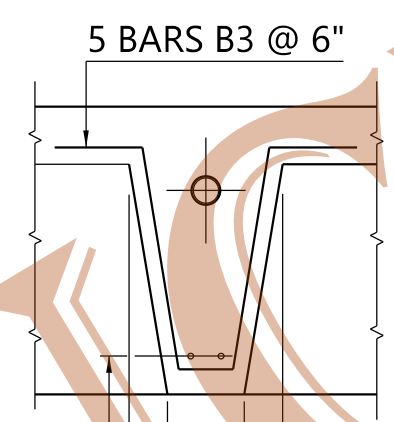


NOTE: ADJACENT PRECAST UNITS SHALL BE LONGITUDINALLY CONNECTED WITH 1" DIA. 1'-9" A-307 BOLTS AND STANDARD NUTS AND WASHERS.

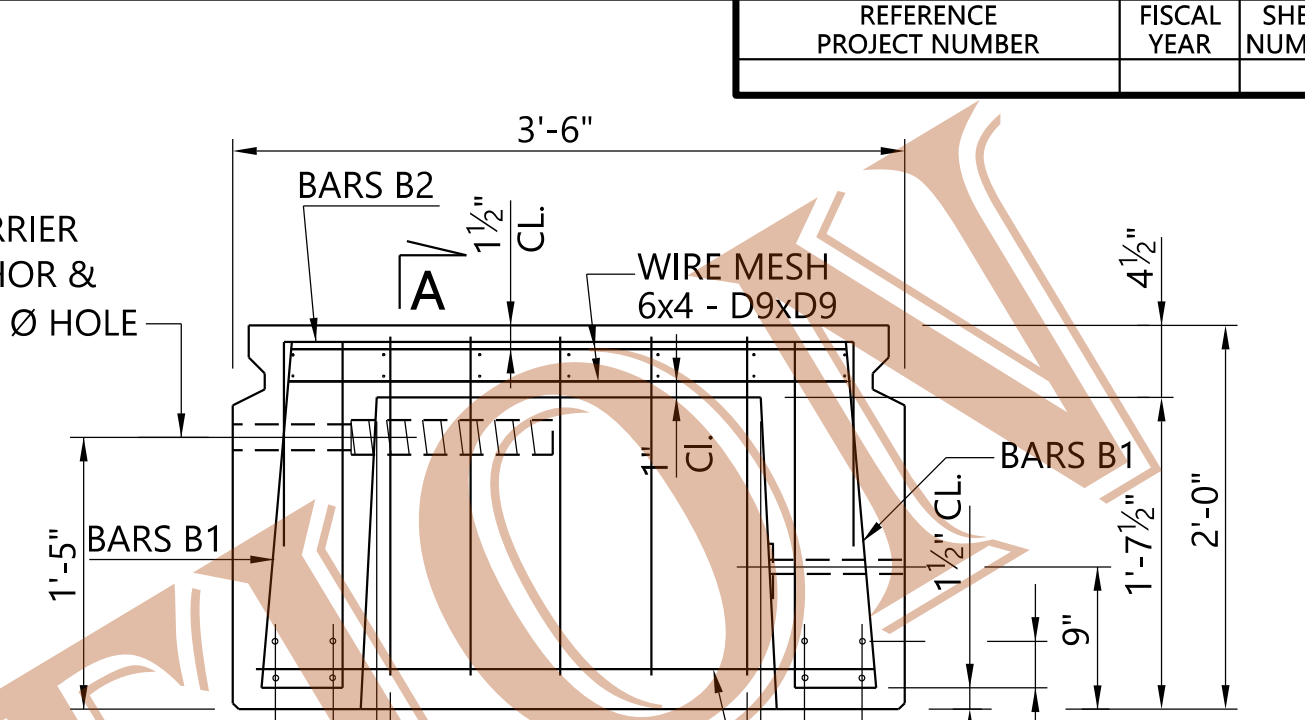
NOTE: SCREW ANCHOR ASSEMBLY DESIGN LOAD = 50 KIPS TENSION. PRECAST MANUFACTURER CERTIFICATIONS VALIDATING THAT FURNISHED/PROPERLY INSTALLED SCREW ANCHOR ASSEMBLY IS CAPABLE OF DEVELOPING TWICE THE SPECIFIED DESIGN LOAD (100 KIPS) SHALL BE SUBMITTED TO THE PROJECT ENGINEER PRIOR TO BARRIER RAIL INSTALLATION.



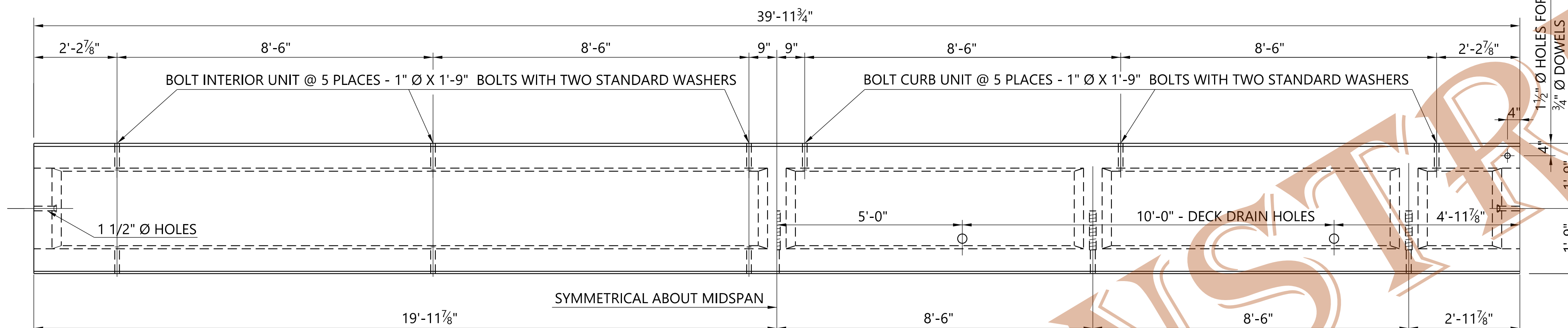
KEY DETAIL



SECTION A-A

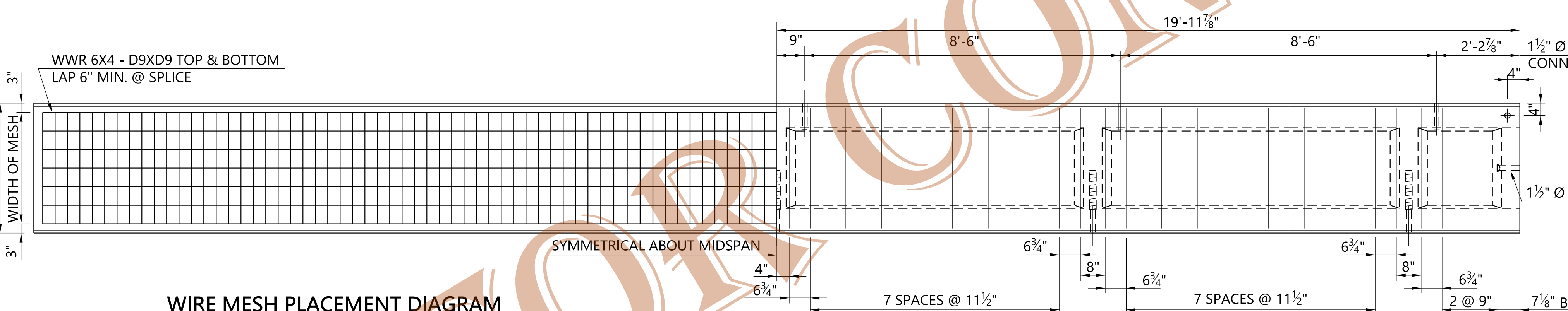


EXTERIOR TYPE 2C SECTION



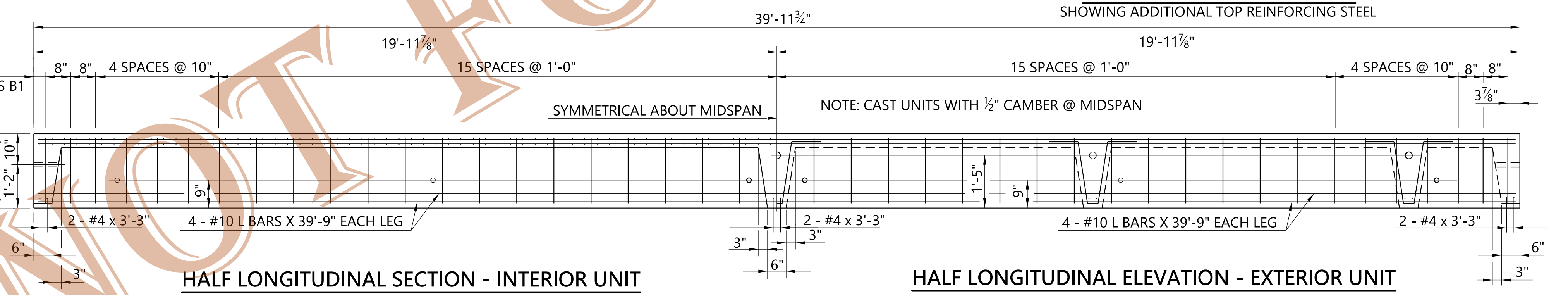
HALF PLAN - INTERIOR UNIT

HALF PLAN - EXTERIOR UNIT



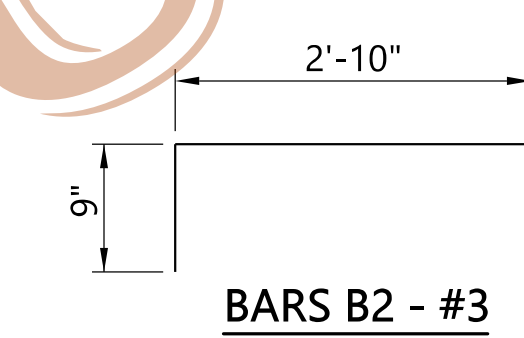
WIRE MESH PLACEMENT DIAGRAM  
INTERIOR UNITS AND EXTERIOR UNITS

HALF PLAN - EXTERIOR UNIT  
SHOWING ADDITIONAL TOP REINFORCING STEEL

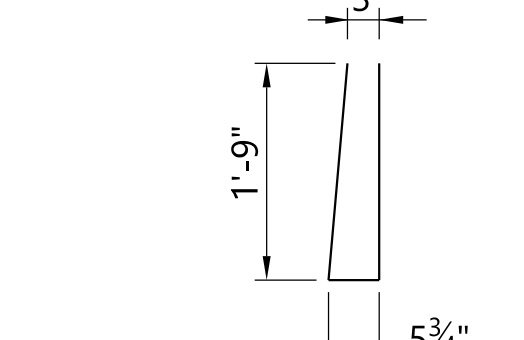


HALF LONGITUDINAL SECTION - INTERIOR UNIT

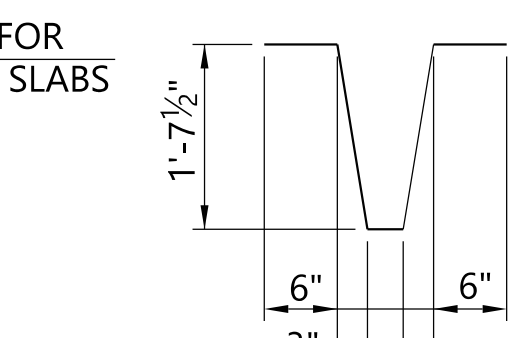
HALF LONGITUDINAL ELEVATION - EXTERIOR UNIT



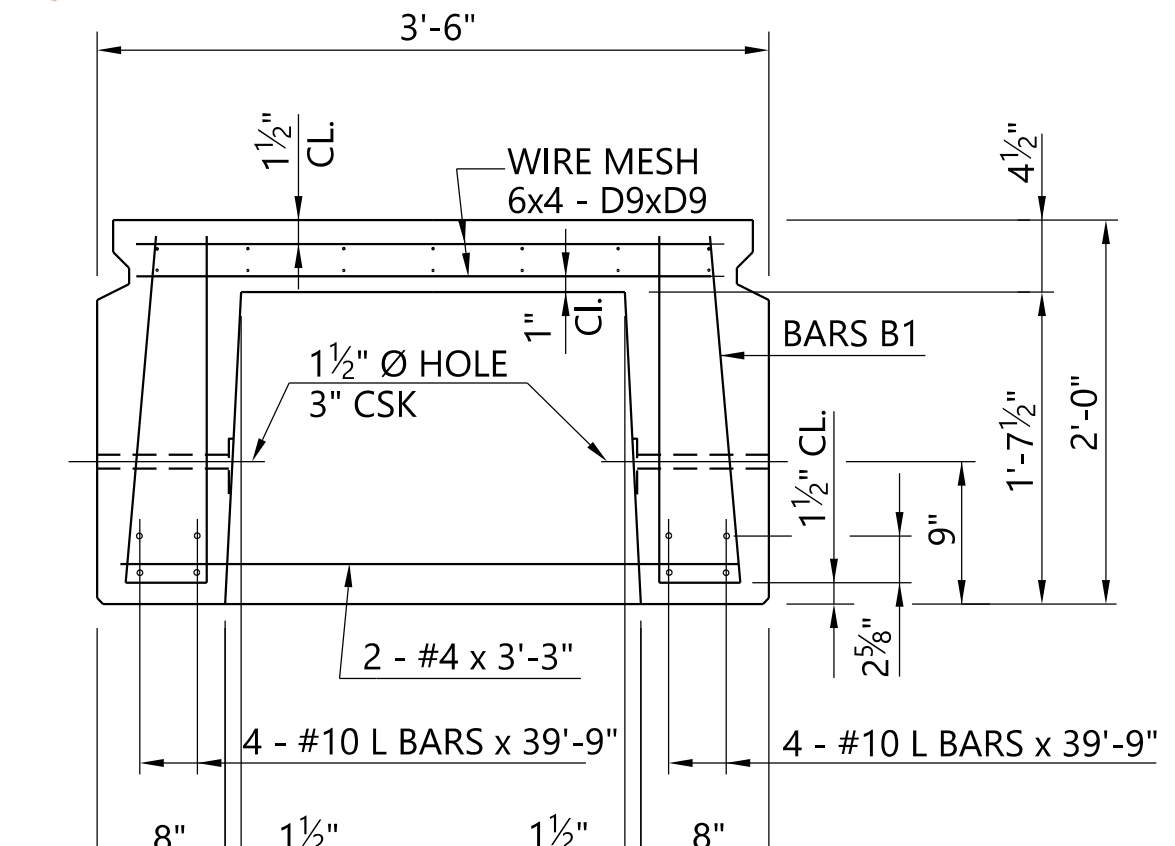
BARS B2 - #3



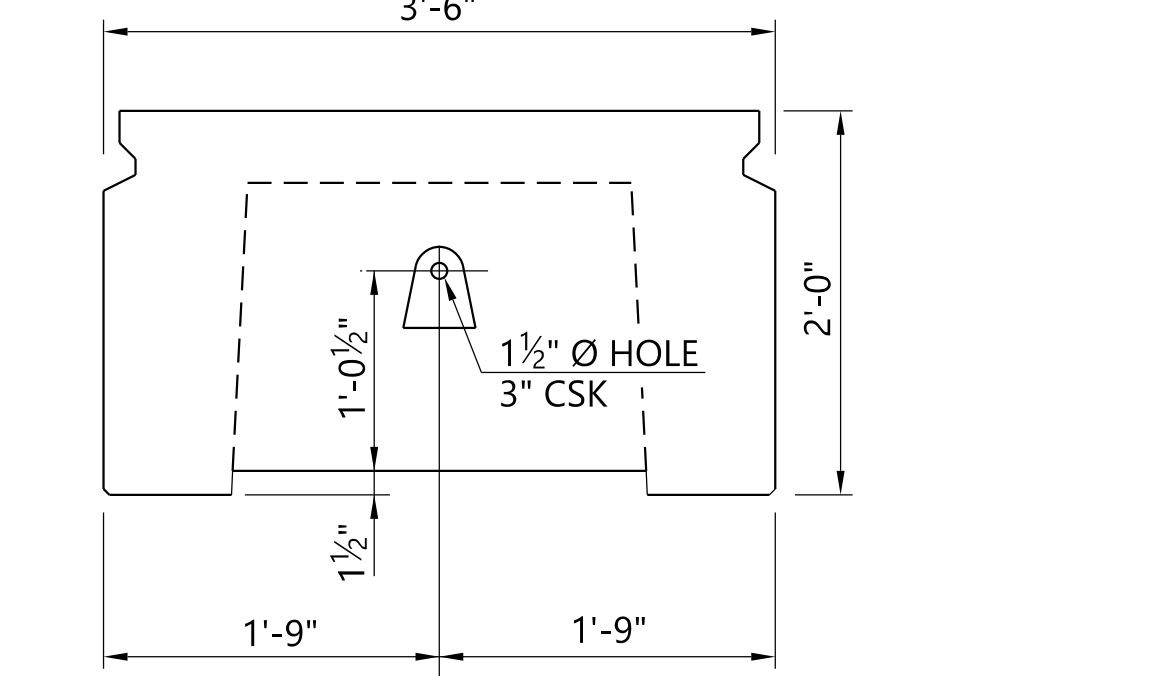
BARS B1 - #3



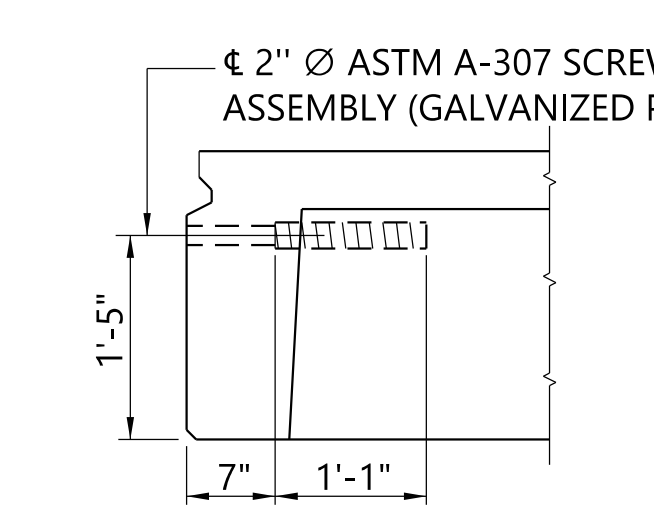
BARS B3 - #3



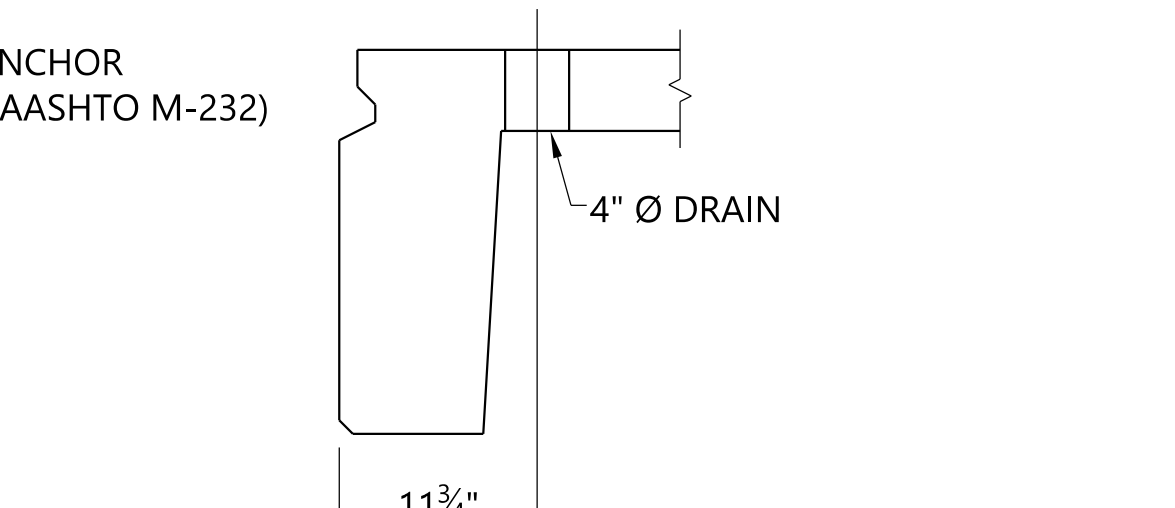
INTERIOR TYPE 1 SECTION



END ELEVATION



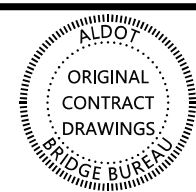
BARRIER ANCHOR DETAIL



SECTION AT DRAIN

ASSISTANT BRIDGE ENGINEER  DATE: 1/7/22	BRIDGE ENGINEER  DATE: 1/7/2022
---	---------------------------------------

ALABAMA DEPARTMENT OF TRANSPORTATION



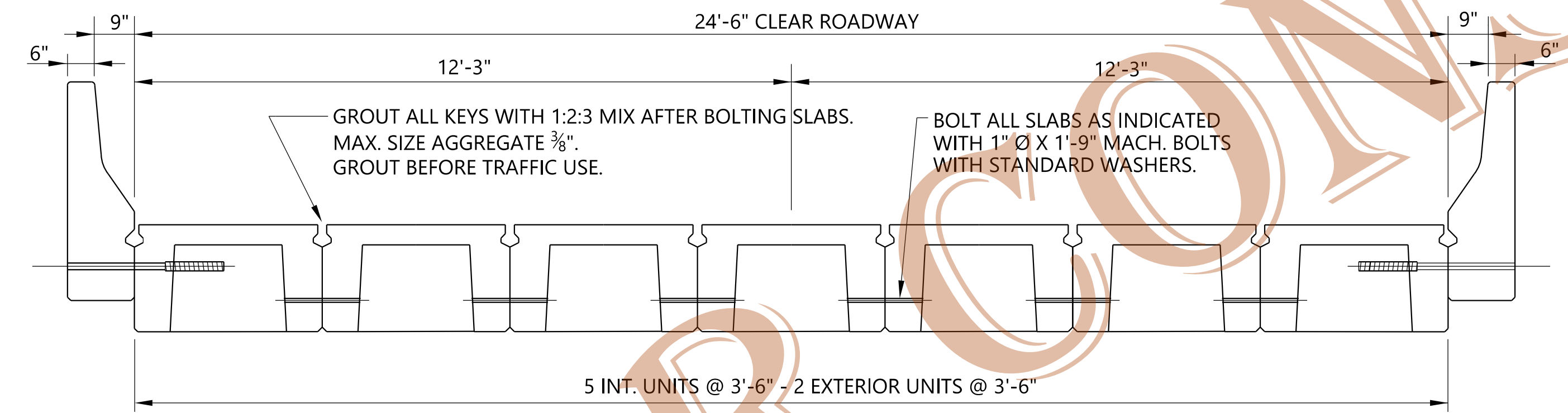
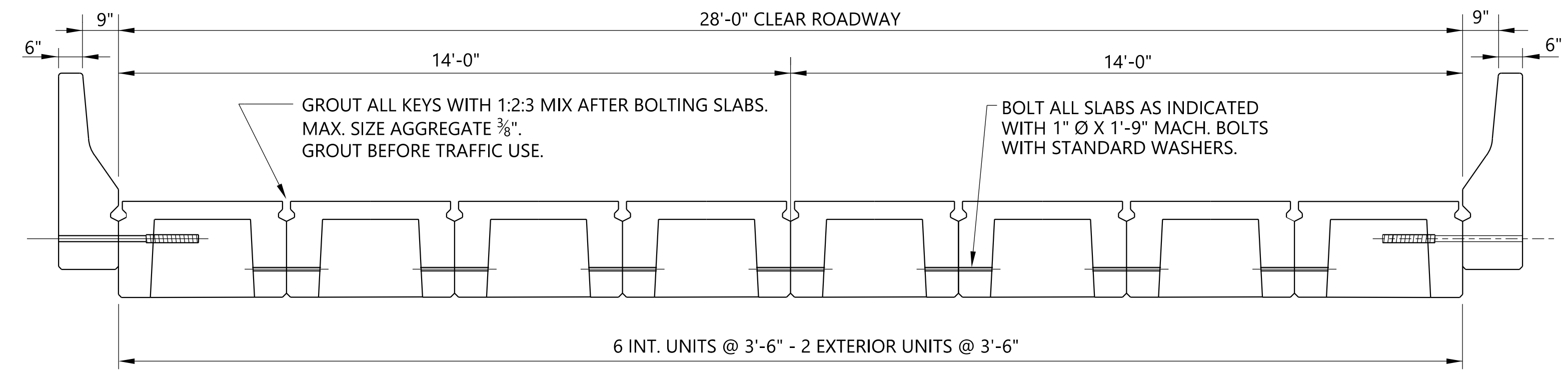
REVISIONS
-----------

THIS BRIDGE SPECIAL PROJECT DRAWING FOR USE ONLY ON:  
PROJECT NO. \_\_\_\_\_  
COUNTY(S) \_\_\_\_\_

THESE DRAWINGS REPRESENT DESIGNS PREPARED FOR USE BY THE ALABAMA DEPARTMENT OF TRANSPORTATION AND ARE NOT TO BE COPIED, REPRODUCED, ALTERED, OR USED BY ANYONE, OR ANY ORGANIZATION, WITHOUT THE EXPRESSED WRITTEN CONSENT OF THE ALABAMA DEPARTMENT OF TRANSPORTATION REPRESENTATIVE AUTHORIZED TO APPROVE SUCH USE. ANYONE MAKING UNAUTHORIZED USE OF THESE DRAWINGS MAY BE PROSECUTED TO THE FULLEST EXTENT OF THE LAW.

PRECAST CONCRETE BRIDGE SLABS - 40' SPANS  
24'-6" & 28'-0" ROADWAYS

BRIDGE SPECIAL PROJECT DRAWING  
PC-40  
SHEET 1 OF 2



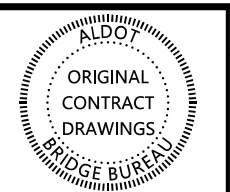
TYPICAL SECTIONS

**GENERAL NOTES:**

1. **ROADWAY:** VARIABLE WIDTH ROADWAYS AS SHOWN.
2. **DESIGN LOADING:** A.A.S.H.T.O. HS20-44
3. **SPECIFICATIONS:** ALABAMA DEPARTMENT OF TRANSPORTATION, CURRENT EDITION.
4. **STEEL REINFORCEMENT:** REINFORCING STEEL SHALL MEET THE REQUIREMENTS OF SECTION 835 OF THE STANDARD SPECIFICATIONS.
5. **WELDED FABRIC:** SHALL CONFORM TO THE REQUIREMENTS FOR WELDED STEEL WIRE REINFORCEMENT, SECTION 835 OF THE STANDARD SPECIFICATIONS. ALSO SHALL CONFORM TO THE REQUIREMENTS OF AASHTO M221 AND M225.
6. **EXPANSION JOINTS:** SEAL IN ACCORDANCE WITH SUBARTICLE 832.02(C)
7. **CONCRETE:** CONCRETE SHALL CONFORM TO SECTION 512 OF THE STANDARD SPECIFICATIONS. COMPRESSIVE STRENGTH SHALL BE 5,000 P.S.I. MIN.
8. **HARDWARE:** ALL BOLTS SHALL CONFORM TO ASTM A-307 AND BE GALVANIZED IN ACCORDANCE WITH AASHTO M-232.

\\bvrms002\Bridges\Standards\Special\Bridges\Special DGN Files\Working Folder For Redetailed Precast BSPD(2023)\PC-40.dgn

PLOTTED: 07-Jan-22 at 08:56



REVISIONS

THIS BRIDGE SPECIAL PROJECT DRAWING FOR USE ONLY ON:  
PROJECT NO. \_\_\_\_\_  
COUNTY(S) \_\_\_\_\_

THESE DRAWINGS REPRESENT DESIGNS PREPARED FOR USE BY THE ALABAMA DEPARTMENT OF TRANSPORTATION AND ARE NOT TO BE COPIED, REPRODUCED, ALTERED, OR USED BY ANYONE, OR ANY ORGANIZATION, WITHOUT THE EXPRESSED WRITTEN CONSENT OF THE ALABAMA DEPARTMENT OF TRANSPORTATION REPRESENTATIVE AUTHORIZED TO APPROVE SUCH USE. ANYONE MAKING UNAUTHORIZED USE OF THESE DRAWINGS MAY BE PROSECUTED TO THE FULLEST EXTENT OF THE LAW.

PRECAST CONCRETE BRIDGE  
SLABS - 40' SPANS  
24'-6" & 28'-0" ROADWAYS

BRIDGE SPECIAL PROJECT DRAWING	
PC-40	SHEET 2 OF 2