

GENERAL NOTES

SPECIFICATIONS: ALABAMA DEPARTMENT OF TRANSPORTATION, CURRENT

DESIGN LOADING: A.A.S.H.T.O. HS 20-44

CONCRETE: CONCRETE FOR PRECAST BENT CAP SHALL BE IN ACCORDANCE WITH SECTION 512 OF THE STANDARD SPECIFICATIONS. ALL EXPOSED CORNERS TO BE CHAMFERED 3/4" BY 45° UNLESS OTHERWISE NOTED. ALL OTHER CORNERS TO BE ROUNDED TO 1/4" RADIUS. CONCRETE WILL NOT BE PAID DIRECTLY, BUT WILL BE CONSIDERED AS SUBSIDIARY TO THE ITEM PRECAST CONCRETE CAP UNIT.

REINFORCING STEEL: ALL REINFORCING STEEL SHALL BE ACCURATELY LOCATED IN THE FORMS AND FIRMLY HELD IN PLACE AS REQUIRED BY ITEM 502.03(c)4 OF THE STANDARD SPECIFICATIONS. REINFORCING STEEL SHALL MEET THE REQUIREMENTS OF SECTION 835 OF THE STANDARD SPECIFICATIONS. ALL REINFORCING STEEL SHALL BE GRADE 60. REINFORCING DIMENSIONS ARE TO THE CENTERLINE OF THE BARS UNLESS OTHERWISE NOTED. THE ABOVE STEEL WILL NOT BE PAID FOR DIRECTLY, BUT WILL BE CONSIDERED AS SUBSIDIARY TO THE ITEM OF PRECAST CONCRETE CAP UNIT.

STRUCTURAL STEEL AND PILING: ALL STRUCTURAL STEEL SHALL CONFORM TO SECTION 836 OF THE STANDARD SPECIFICATIONS. ALL PILING SHALL BE 12" STEEL "H" PILING, 53 LBS. PER FOOT. FOR DETAILS OF PILE SPLICE SEE BRIDGE SPECIAL PROJECT DRAWING SBD-1.

WELDING: ALL WELDING SHALL CONFORM TO ARTICLE 836.46 OF THE STANDARD SPECIFICATIONS.

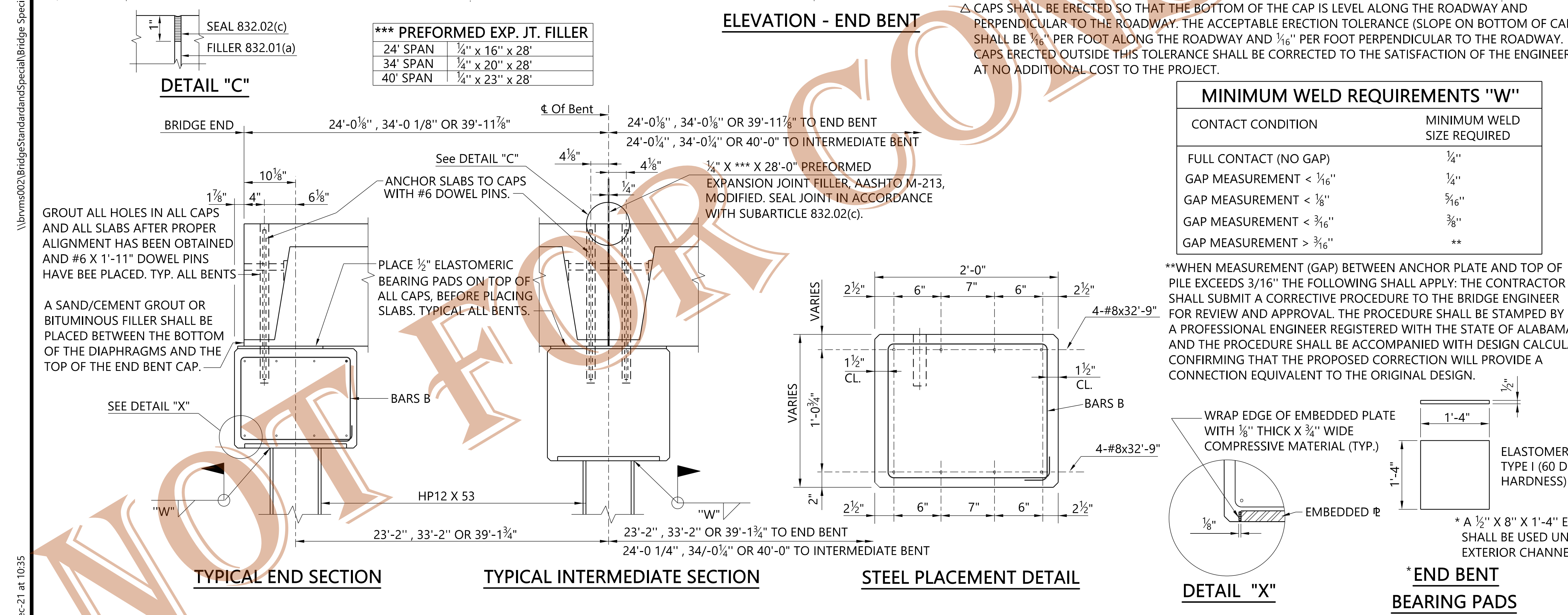
TOLERANCES: A SEVIATION OF MORE THAN 1/8" MAY BE CAUSE FOR REJECTION OF THE UNIT.

DESIGN DATA: A.A.S.H.T.O. 2002 STANDARD SPECIFICATIONS FOR HIGHWAY BRIDGES & INTERIMS SERVICE DESIGN.

BID ITEM:

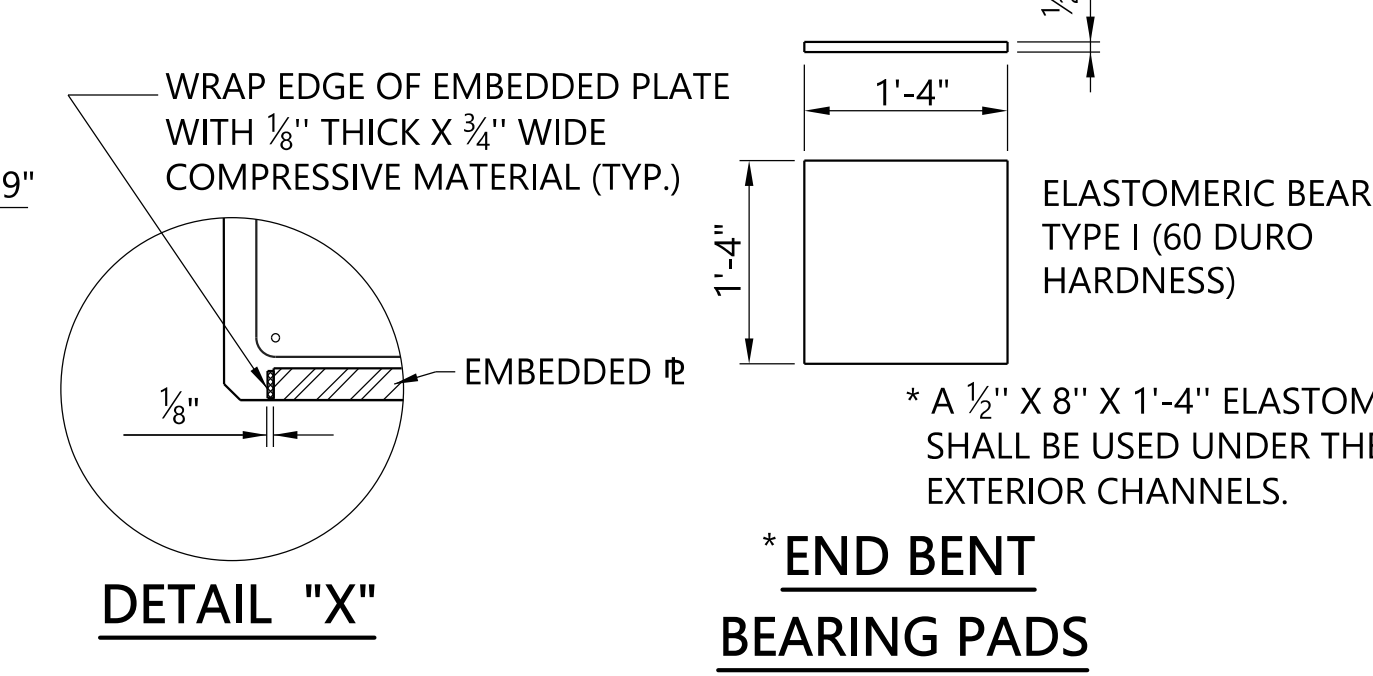
511-A ELASTOMERIC BEARINGS TYPE 1 - PER EACH.

512-A PRECAST CONCRETE ABUTMENT CAPS, 2'-0" WIDE BY 1'-8" DEEP BY 33'-0" LONG PER EACH



CONTACT CONDITION	MINIMUM WELD SIZE REQUIRED
FULL CONTACT (NO GAP)	1/4"
GAP MEASUREMENT < 1/16"	1/4"
GAP MEASUREMENT < 1/8"	5/16"
GAP MEASUREMENT < 3/16"	3/8"
GAP MEASUREMENT > 3/16"	**

**WHEN MEASUREMENT (GAP) BETWEEN ANCHOR PLATE AND TOP OF PILE EXCEEDS 3/16" THE FOLLOWING SHALL APPLY: THE CONTRACTOR SHALL SUBMIT A CORRECTIVE PROCEDURE TO THE BRIDGE ENGINEER FOR REVIEW AND APPROVAL. THE PROCEDURE SHALL BE STAMPED BY A PROFESSIONAL ENGINEER REGISTERED WITH THE STATE OF ALABAMA AND THE PROCEDURE SHALL BE ACCOMPANIED WITH DESIGN CALCULATIONS CONFIRMING THAT THE PROPOSED CORRECTION WILL PROVIDE A CONNECTION EQUIVALENT TO THE ORIGINAL DESIGN.



24'-0" SPAN	28 TONS PER PILE
34'-0" SPAN	36 TONS PER PILE
40'-0" SPAN	42 TONS PER PILE

NOTE: LOADS ARE FOR 0% GRADE BRIDGES.

ASSISTANT BRIDGE ENGINEER: *[Signature]* 11/6/22 DATE

BRIDGE ENGINEER: *[Signature]* 11/6/22 DATE