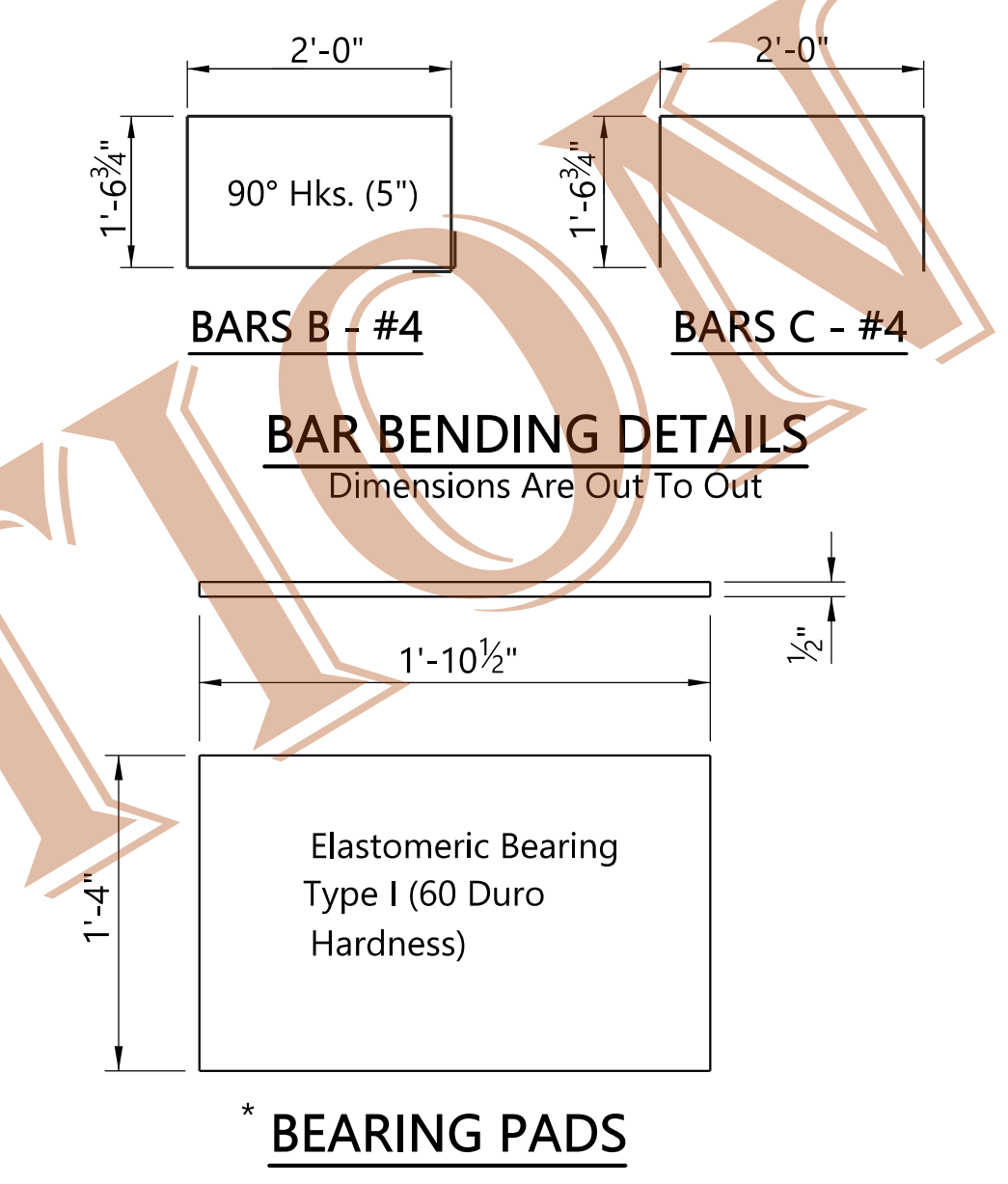
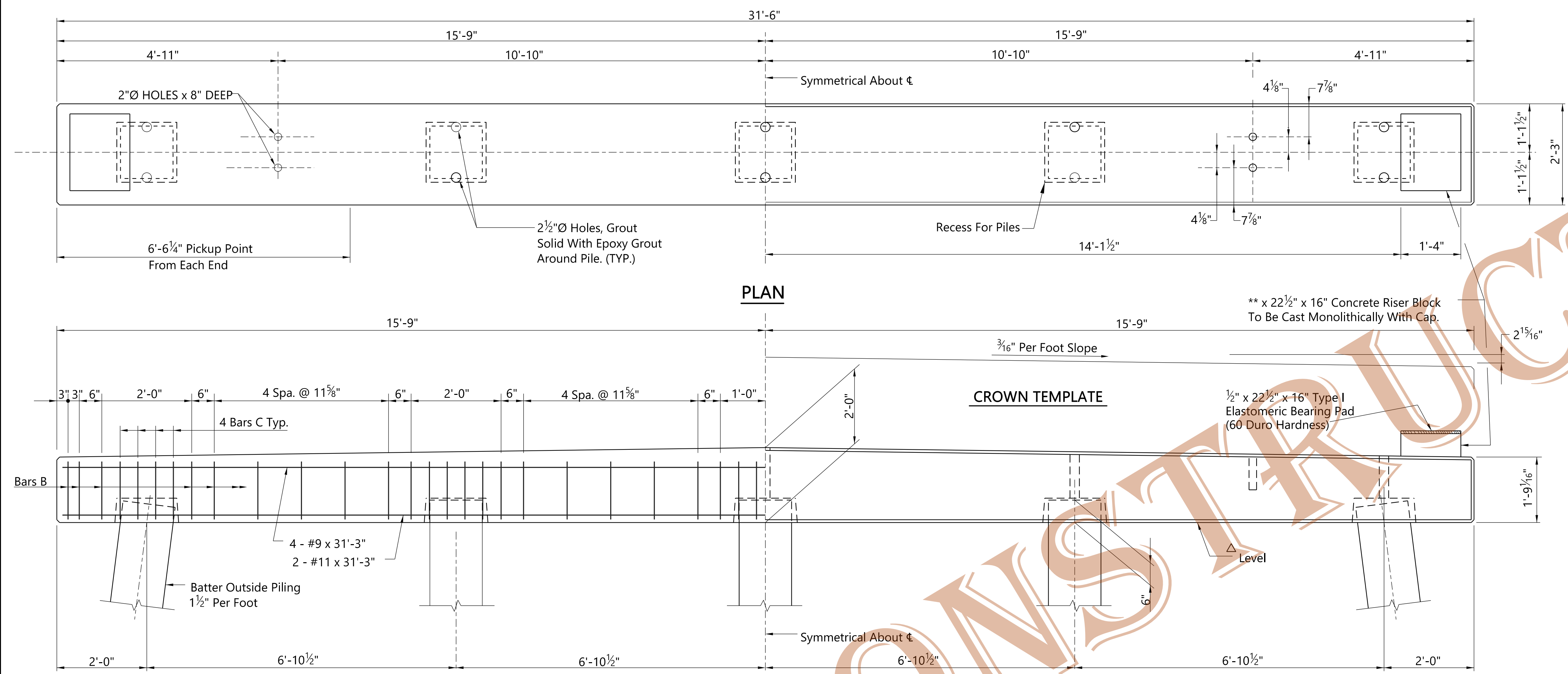


SHEET REFERENCE
0 1' 2'

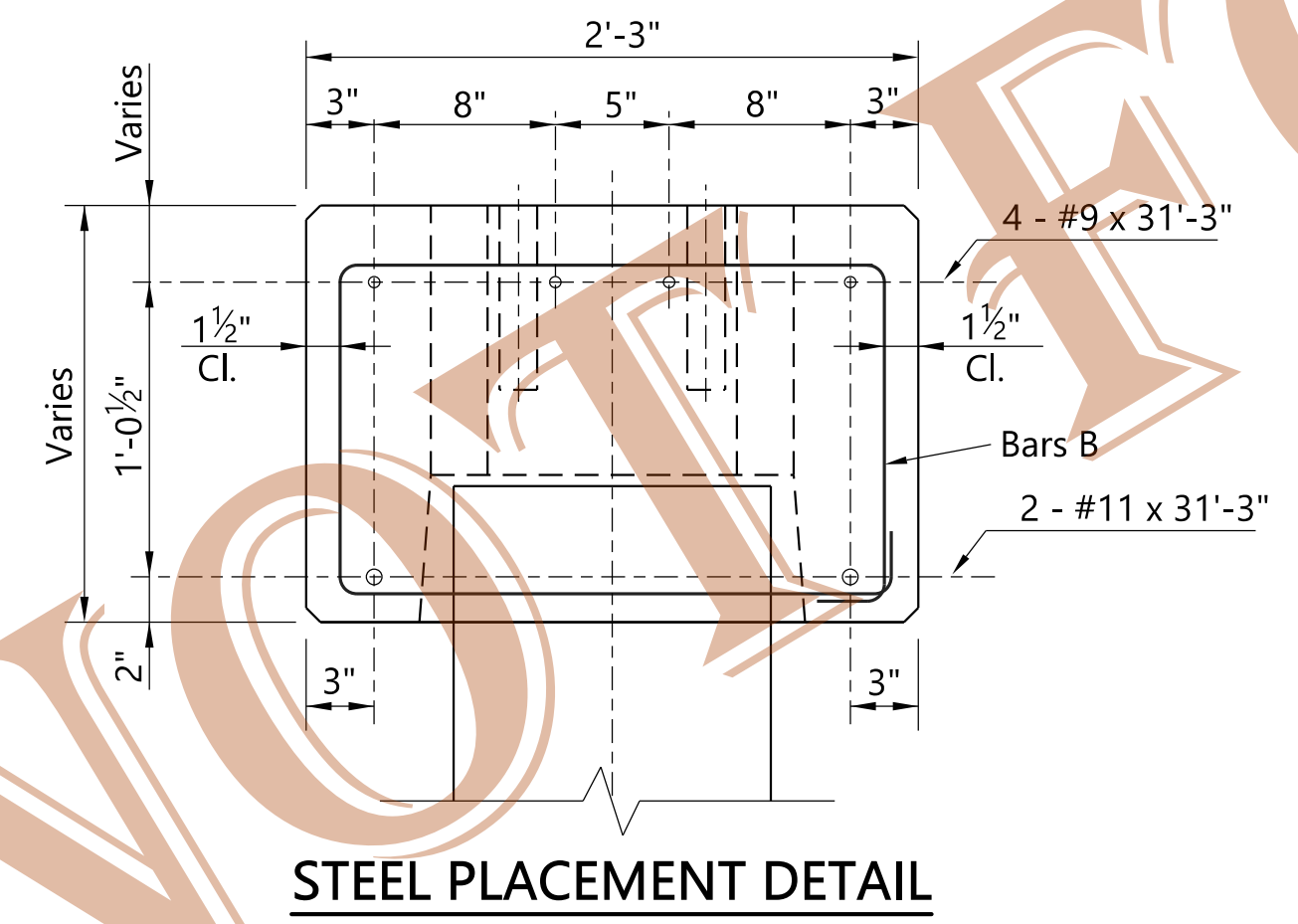


* BEARING PADS
* A 1/2" X 8" X 1'-10 1/2" Elastomeric Bearing, Type 1 Shall Be Used Under The Outside Legs Of The Exterior Channels.

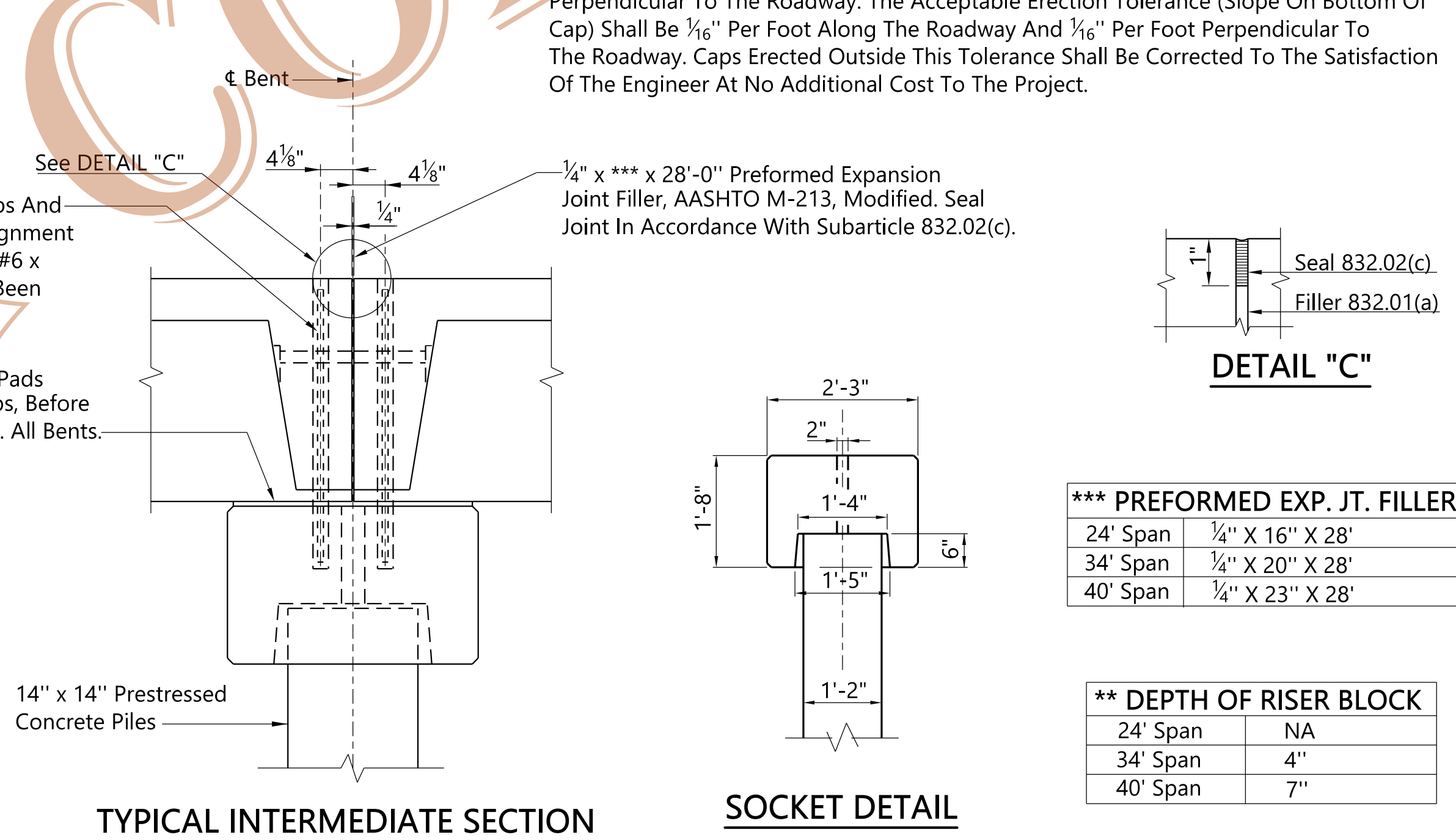
GENERAL NOTES:

SPECIFICATIONS: Alabama Department Of Transportation, Current
DESIGN LOADING: A.A.S.H.T.O. HS 20-44
CONCRETE: Concrete For Precast Bent Cap Shall Be In Accordance With Section 512 Of The Standard Specifications. All Exposed Corners To Be Chamfered 3/4" By 45° Unless Otherwise Noted. All Other Corners To Be Rounded To 1/4" Radius. Concrete Will Not Be Paid For Directly, But Will Be Considered As Subsidiary To The Item Precast Concrete Cap Unit.
REINFORCING STEEL: All Reinforcing Steel Shall Be Accurately Located In The Forms And Firmly Held In Place As Required By Item 502.03(c)4 Of The Standard Specifications. Reinforcing Steel Shall Meet The Requirements Of Section 835 Of The Standard Specifications. All Reinforcing Steel Shall Be Grade 60. Reinforcing Dimensions Are To The Center Line Of The Bars Unless Otherwise Noted. The Above Steel Will Not Be Paid For Directly, But Will Be Considered As Subsidiary To The Item Of Precast Concrete Cap Unit.
ALL PILING Shall Be 14" x 14" Prestressed Concrete Per Standard Drawing PSCP-1 And Conform To Section 505 Of The Standard Specifications.
EPOXY GROUT For Caps To Piling Connection Shall Be Composed Of One (1) Part Epoxy (Binder) And Three (3) Parts Dry Silica Sand, (Bagged 1 Cu. Ft. Per Bag) Measured By Volume.
EPOXY GROUT Shall Develop A Minimum Compressive Strength Of 5,000 p.s.i. In Twelve (12) Hours. Contractor Shall Submit Method Of Sampling And Testing To Verify Strength Requirement To The Bridge Engineer For Approval Prior To Grouting Caps.
TOLERANCES: A Deviation Of More Than 1/8" May Be Cause For Rejection Of The Unit.
DESIGN DATA: A.A.S.H.T.O. 2002 Standard Specifications For Highway Design & Interims Service Load Design
BID ITEM:
 511-A Elastomeric Bearings Type I - Per Each
 512-B Precast Concrete Intermediate Bent Caps, 2'-3" Wide By 2'-0" Deep By 31'-6" Long - Per Each.

DESIGN PARAMETERS
 The Following Design Assumptions Were Used To Develop This Standard Drawing:
 Design Axial Load = 40 tons / pile for 24'-0" span
 Design Axial Load = 49 tons / pile for 34'-0" span
 Design Axial Load = 59 tons / pile for 40'-0" span
 "k" for computing unbraced pile length = 2.0
 scour depth = 0 feet
 distance from groundline to pile fully fixed = 15 feet
 factor of safety for unscoured condition = 2.0
 free standing length = 30 feet *
 The Designer Of Record Is Responsible For Determining Actual Pile Size And Bracing Requirements For Conditions Not Satisfied By The Above Noted Design Assumptions.
 * Length From Point Of Fixity To Underside Of Cap.



ELEVATION



*** PREFORMED EXP. JT. FILLER	
24' Span	1/4" X 16" X 28'
34' Span	1/4" X 20" X 28'
40' Span	1/4" X 23" X 28'

** DEPTH OF RISER BLOCK	
24' Span	NA
34' Span	4"
40' Span	7"

REVISIONS

THIS BRIDGE SPECIAL PROJECT DRAWING FOR USE ONLY ON:
 PROJECT NO. _____
 COUNTY(S) _____

THESE DRAWINGS REPRESENT DESIGNS PREPARED FOR USE BY THE ALABAMA DEPARTMENT OF TRANSPORTATION AND ARE NOT TO BE COPIED, REPRODUCED, ALTERED, OR USED BY ANYONE, OR ANY ORGANIZATION, WITHOUT THE EXPRESSED WRITTEN CONSENT OF THE ALABAMA DEPARTMENT OF TRANSPORTATION REPRESENTATIVE AUTHORIZED TO APPROVE SUCH USE. ANYONE MAKING UNAUTHORIZED USE OF THESE DRAWINGS MAY BE PROSECUTED TO THE FULLEST EXTENT OF THE LAW.

PRECAST CONCRETE BENT CAP FOR USE WITH
 14" X 14" CONCRETE PILING AND PRECAST
 CONCRETE BRIDGE SLABS 24'-0", 34'-0" OR
 40'-0" SPANS 28'-0" CLEAR ROADWAY

ASSISTANT BRIDGE ENGINEER <i>[Signature]</i> DATE 1/16/22	BRIDGE ENGINEER <i>[Signature]</i> DATE 1/7/2022
---	--

\\brms002\bridge\standard\Special Bridge Special DGN Files\2022 DGN\Precast\PCB2840CP.dgn

PLOTTED: 27-Dec-21 at 10:55