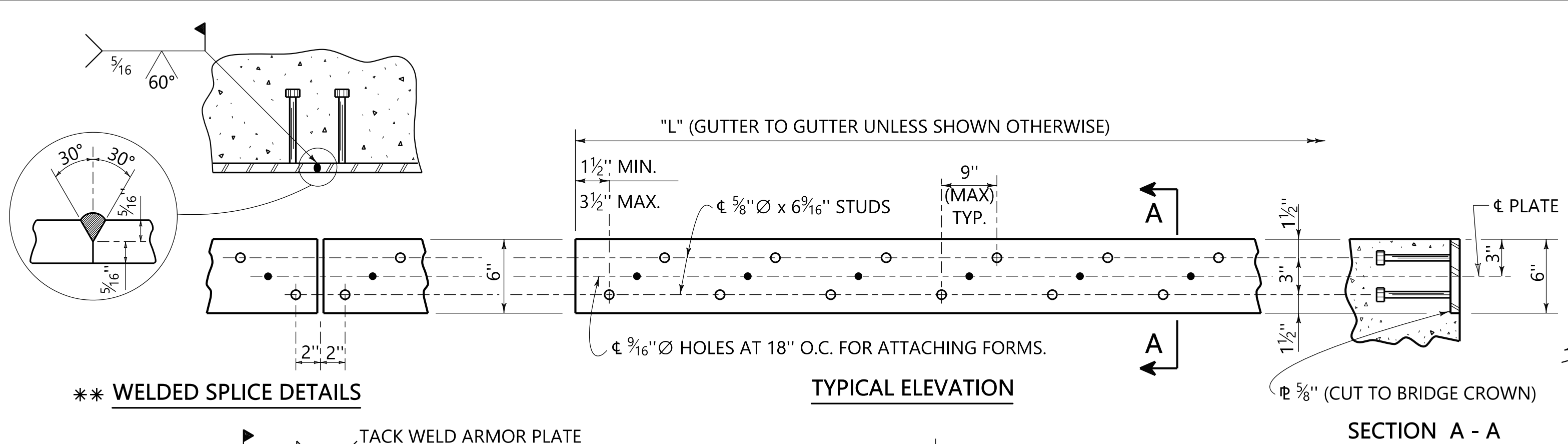
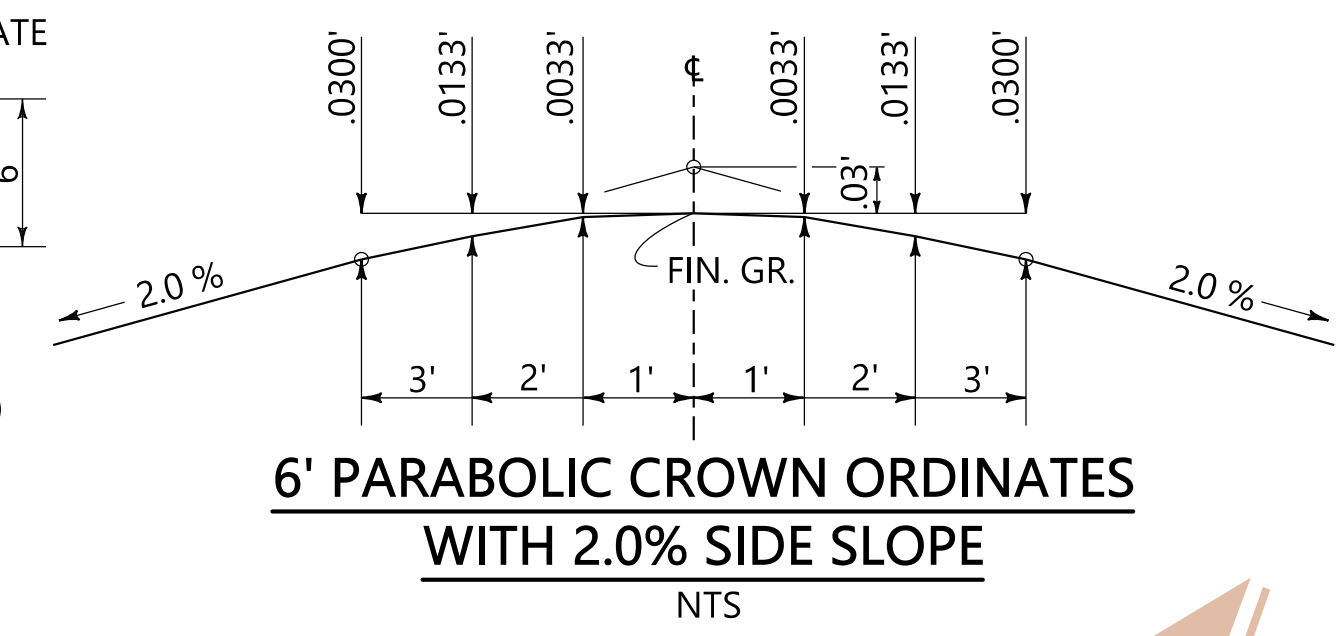
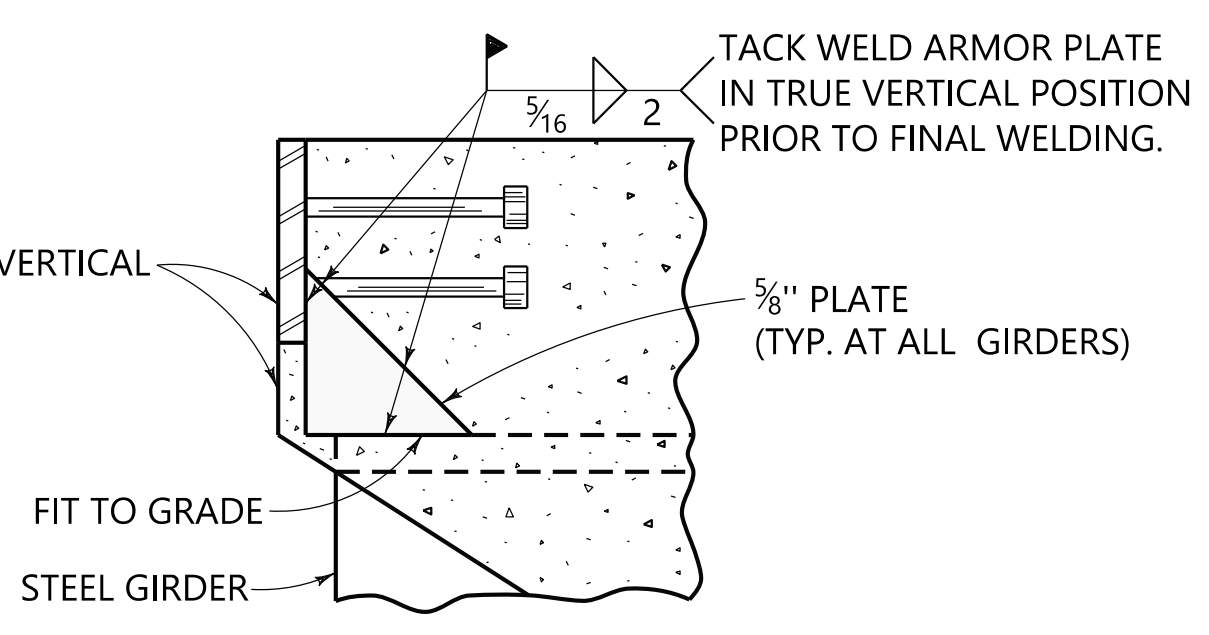


**NOTES:**

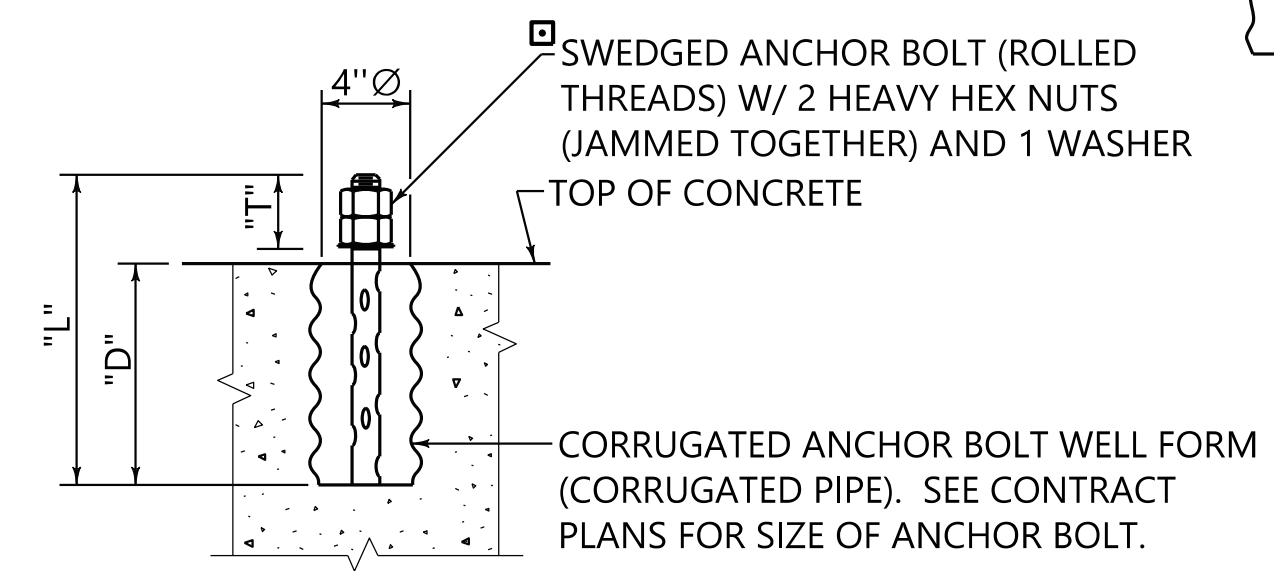
- ARMOR PLATE**
- ANY BURRS ON ROADWAY EDGE OF ARMOR PLATE SHALL BE GROUND SMOOTH.
  - ON AN ARMOR PLATE WHERE A WELDED SPlice IS USED, PLACE ONE (1) STUD TWO INCHES (2") EACH SIDE OF THE WELDED SPlice AS SHOWN.
  - A FULL PENETRATION GROOVE WELD SHALL BE USED FOR SHOP WELDED SPlices.
  - FIELD SPlices SHALL NOT BE LOCATED INSIDE THE LIMITS OF PARABOLIC CROWNS UNLESS OTHERWISE SHOWN BY PLAN DETAILS.
  - ARMOR PLATES SHALL BE GALVANIZED ACCORDING TO AASHTO M 111 AND THE FOLLOWING, UNLESS OTHERWISE NOTED ON THE CONTRACT PLANS: THE ARMOR PLATE SHALL BE RETURNED TO THE FABRICATION SHOP FOR INSPECTION AFTER GALVANIZATION, AREAS WHICH ARE TO BE WELDED AFTER GALVANIZATION SHALL HAVE THE GALVANIZATION REMOVED PRIOR TO WELDING, IF THE FIELD SPlice IS WELDED, COLD GALVANIZATION SHALL BE USED TO REPAIR THESE AREAS AND ANY DAMAGED AREAS, AND NUMBER OF BOLTED FIELD SPlices SHALL BE HELD TO A MINIMUM DEPENDENT ON CONSTRUCTION REQUIREMENTS AND APPROVAL OF THE ENGINEER.
  - WEIGHT OF OPTIONAL BOLTED SPlice PLATE AND 3/8" DIA x 1 1/4" STUDS WILL NOT BE MEASURED FOR PAYMENT. COST SHALL BE INCLUDED IN PAYMENT FOR ARMOR PLATES.
  - STEEL FOR ARMOR PLATES SHALL BE GRADE 36 OR BETTER. PAYMENT SHALL BE INCLUDED IN PAY ITEM 508A, LBS., STRUCTURAL STEEL.
- ANCHOR BOLTS**
- ANCHOR BOLTS DIMENSIONED FOR USE WITH STANDARD BEARINGS SHOWN ON BRIDGE SPECIAL PROJECT DRAWING SPGD-1. ANCHOR BOLTS MAY BE USED WITH OTHER BEARING DESIGNS BUT COMPATIBILITY MUST BE VERIFIED BY THE DESIGNER.
  - SWEDGED ANCHOR BOLTS W/2 HEAVY HEX NUTS AND 1-WASHER EACH SHALL BE INCLUDED IN PAY ITEM 508A, LBS., STRUCTURAL STEEL.
  - SWEDGED ANCHOR BOLTS, NUTS AND WASHERS SHALL BE HOT-DIPPED GALVANIZED IN ACCORDANCE WITH AASHTO M 232. DAMAGED GALVANIZED SURFACES NOT TO BE ENCASED IN CONCRETE SHALL BE REPAIRED IN ACCORDANCE WITH STANDARD SPECIFICATION 855.15.
  - SWEDGED ANCHOR BOLTS SHALL BE SET IN 4" DIA ANCHOR BOLT WELLS.
  - PROVIDE EACH ANCHOR BOLT WELL WITH A READILY REMOVABLE WATERTIGHT CAP, DETAILS TO BE APPROVED BY THE ENGINEER. THE FORMWORK, DEBRIS AND STANDING WATER SHALL BE REMOVED FROM EACH WELL IMMEDIATELY PRIOR TO CAPPING. IT IS MANDATORY THAT CAPS BE IN PLACE THROUGHOUT PERIODS DURING WHICH BELOW FREEZING TEMPERATURES CAN BE EXPECTED TO OCCUR. THE CONTRACTOR SHALL ENSURE THAT ANY WATER TRAPPED IN THE WELLS DOES NOT FREEZE.
  - REMOVE CORRUGATED WELL FORM PRIOR TO GROUTING ANCHOR BOLTS. DO NOT GROUT ANCHOR BOLTS UNTIL GIRDERS HAVE BEEN COMPLETELY ERECTED, ADJUSTED IF NECESSARY AFTER ERECTION AND APPROVED BY THE ENGINEER.
- PILE CAP CHANNELS & PLATE**
- PILE CAP PLATE MAY BE CUT FROM PILE CUT-OFF. PAYMENT FOR PILE CAP PLATES AND PILE CAP CHANNELS ARE INCLUDED IN PAY ITEM 508A, LBS., STRUCTURAL STEEL
- JOINT SEAL**
- WHEN BRIDGE STANDARD NOTE (15) IS CALLED FOR, SILICONE JOINT SEAL SHALL BE INSTALLED IN ACCORDANCE WITH THE MANUFACTURER'S RECOMMENDATIONS. MATERIALS USED FOR SEALING THE JOINT SHALL BE 100% SILICONE RUBBER DESIGNED TO SEAL EXPANSION JOINTS THAT EXPERIENCE BOTH THERMAL AND VERTICAL MOVEMENT DUE TO TRAFFIC LOADING. TURN SEAL UP BETWEEN BARRIER RAILS AT GUTTERLINES TO EXTEND A MINIMUM OF 6" ABOVE BRIDGE DECK. PAYMENT FOR MATERIALS AND INSTALLATION SHALL BE INCLUDED IN PAY ITEM "LUMP SUM-BRIDGE CONCRETE SUPERSTRUCTURE."
- PILE SPlice PLATE**
- AT THE CONTRACTOR'S OPTION, A PRE-FABRICATED H-PILE SPlicer MAY BE USED IN LIEU OF THE SPlice SHOWN. THE CONTRACTOR SHALL CHOOSE A SPlicer FROM THE ALDOT MISCELLANEOUS APPROVED PRODUCTS LIST OR SHALL FURNISH THE MANUFACTURER'S SPlicer DETAILS AND RECOMMENDATIONS FOR INSTALLATION TO THE CONSTRUCTION ENGINEER FOR APPROVAL.
  - PILE SPlice PLATES MAY BE CUT FROM PILE CUT-OFF. ENDS OF PILES TO BE BURNED SQUARE AND BUTT WELDED BY A WELDER POSSESSING AN ALDOT WELDER QUALIFICATION CARD.
  - PILE SPlices SHALL ONLY BE USED BELOW GRADE WITH THE EXCEPTION OF TEST PILES.
- PILE PAINTING**
- THE SYSTEM 1A INTERMEDIATE AND TOP COAT MAY BE OMITTED WHENEVER CONCRETE ENCASEMENT EXTENDS TO WITHIN 6" FROM BOTTOM OF CAP.
  - HATCHED SURFACE (1'-0" ABOVE & BELOW TOP OF ENCASEMENT) SHALL RECEIVE A SSPC SP6 SURFACE PREPARATION PRIOR TO BEING COATED WITH AN APPROVED GALV. REPAIR PAINT THAT SATISFIES THE REQUIREMENTS OF SUB-ARTICLE 855.15 OF THE STANDARD SPECIFICATIONS.
  - SURFACE PREPARATION AND PAINTING FOR PILE AND SWAY BRACING SHALL BE FIELD APPLIED.
- SHOP DRAWINGS**
- PER ALDOT STANDARD SPECIFICATIONS, SHOP DRAWINGS FOR PAY ITEM 508-A ITEMS ARE REQUIRED. SHOP DRAWINGS ARE NOT REQUIRED FOR PILE CAP PLATES.



**\*\* WELDED SPlice DETAILS**

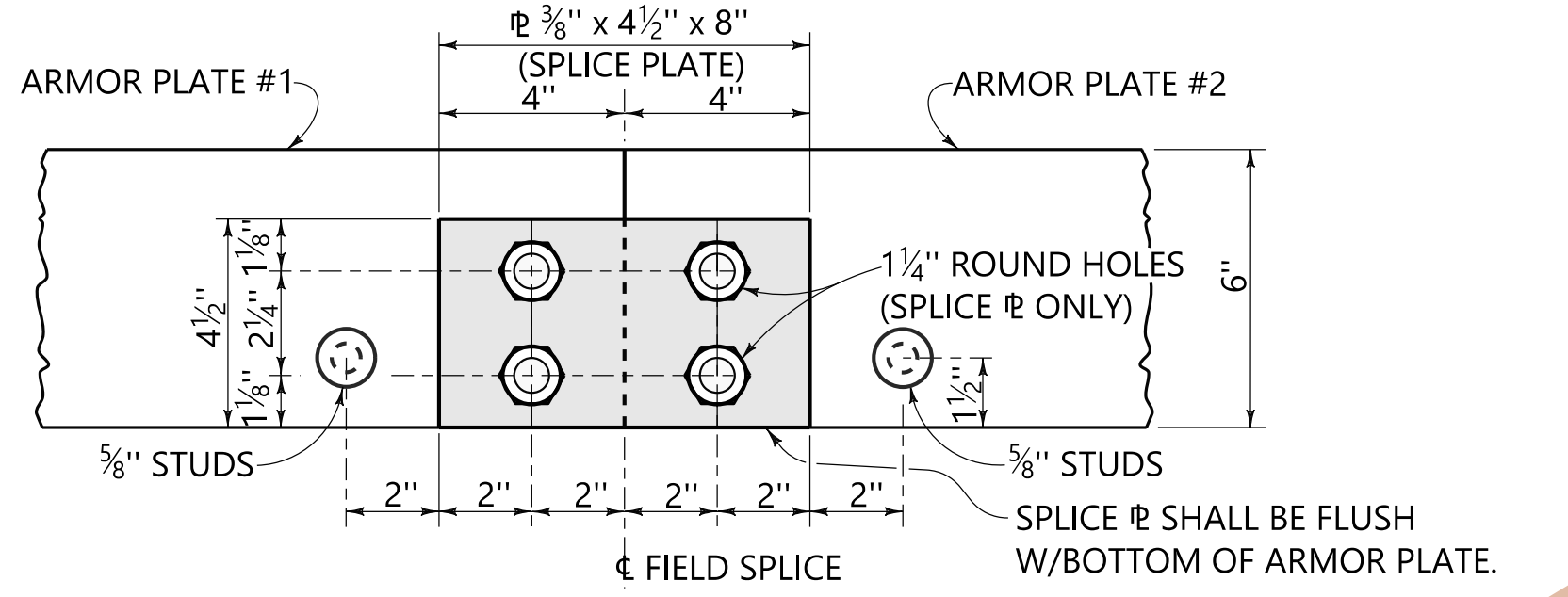
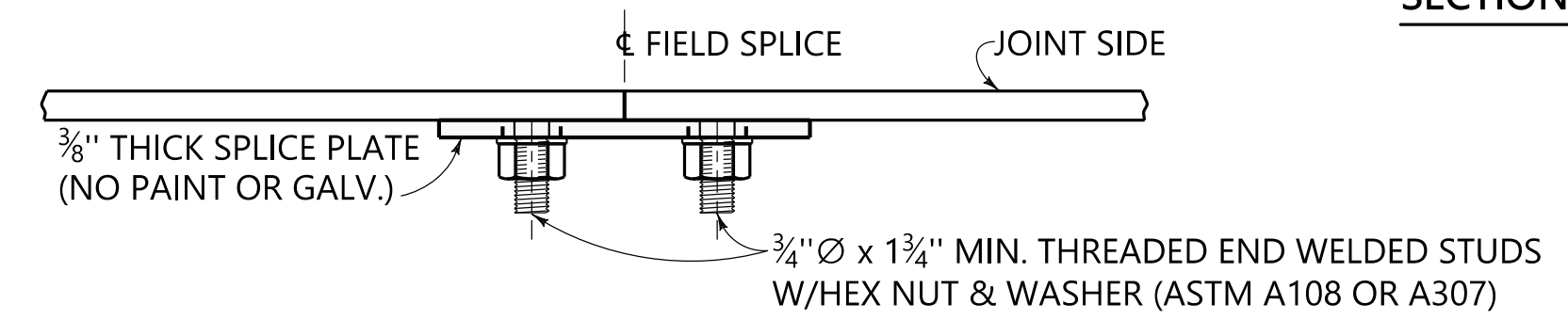


**ARMOR PLATE CONNECTION DETAIL**



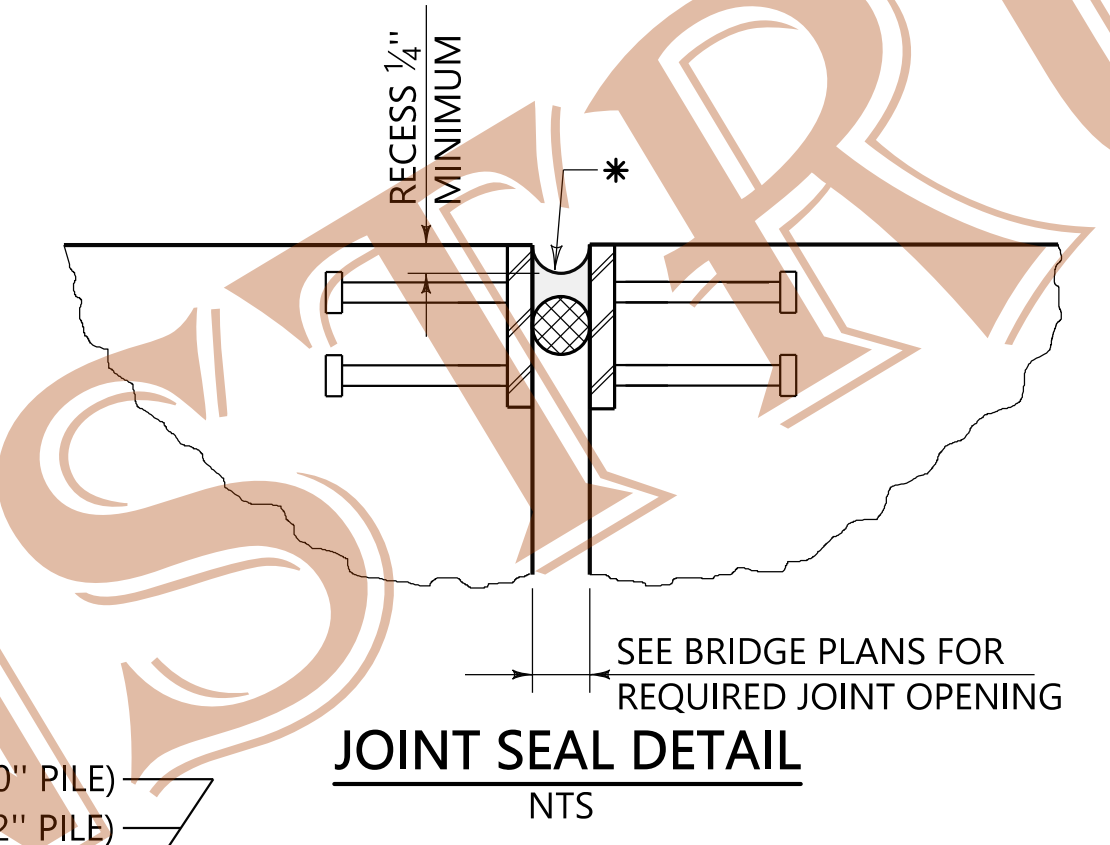
**ANCHOR BOLT AND WELL DETAIL**

ANCHOR BOLT DIMENSIONS				
BOLT TYPE	NOM. DIA.	LENGTH "L"	THREADS "T"	EMBED "D"
AB-1	1"	2'-0"	6"	1'-4"
AB-2	1 1/4"	2'-3"	7"	1'-6"
AB-3	1 1/2"	2'-7"	8"	1'-9"

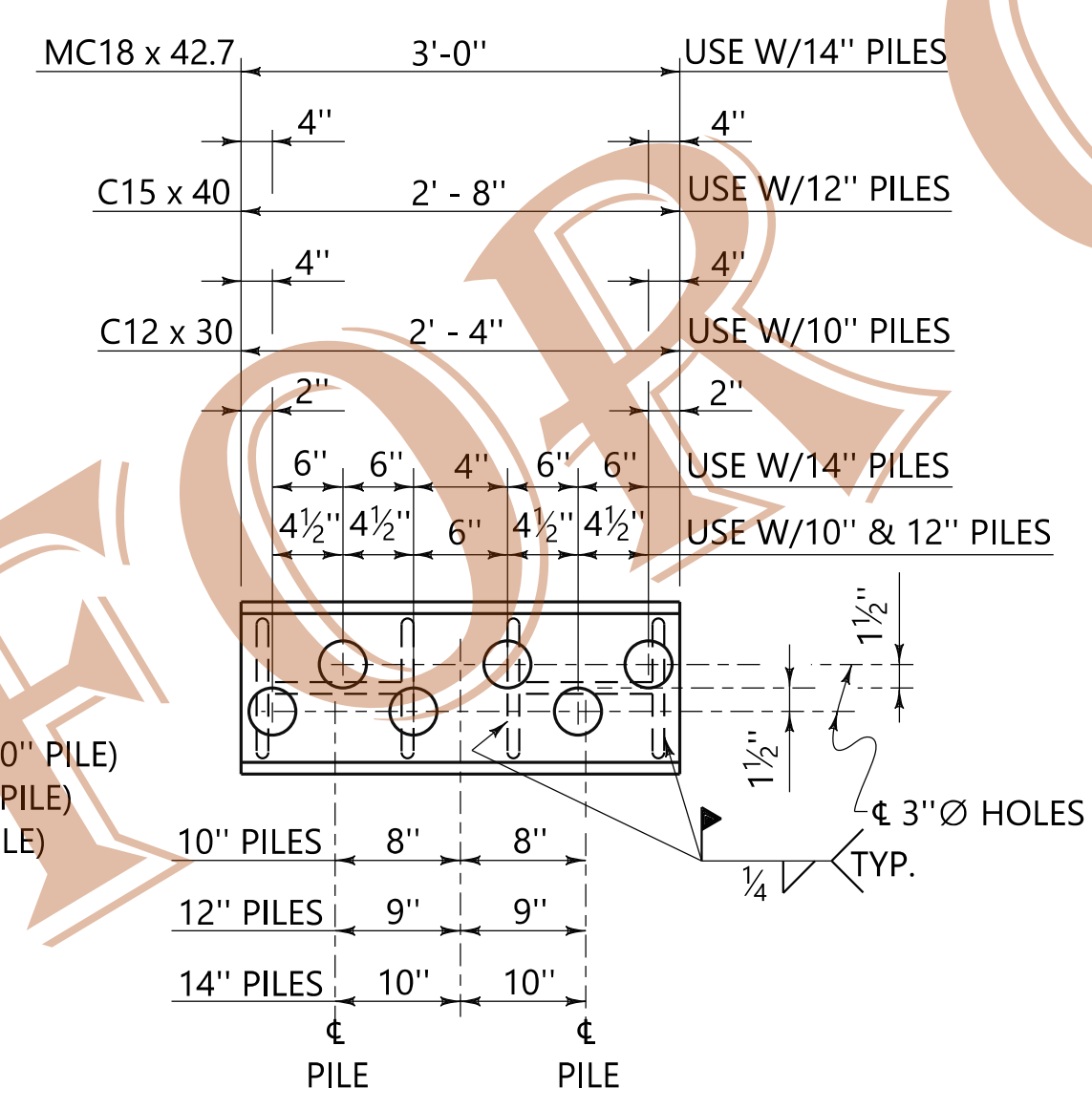


**OPTIONAL BOLTED FIELD SPlice**

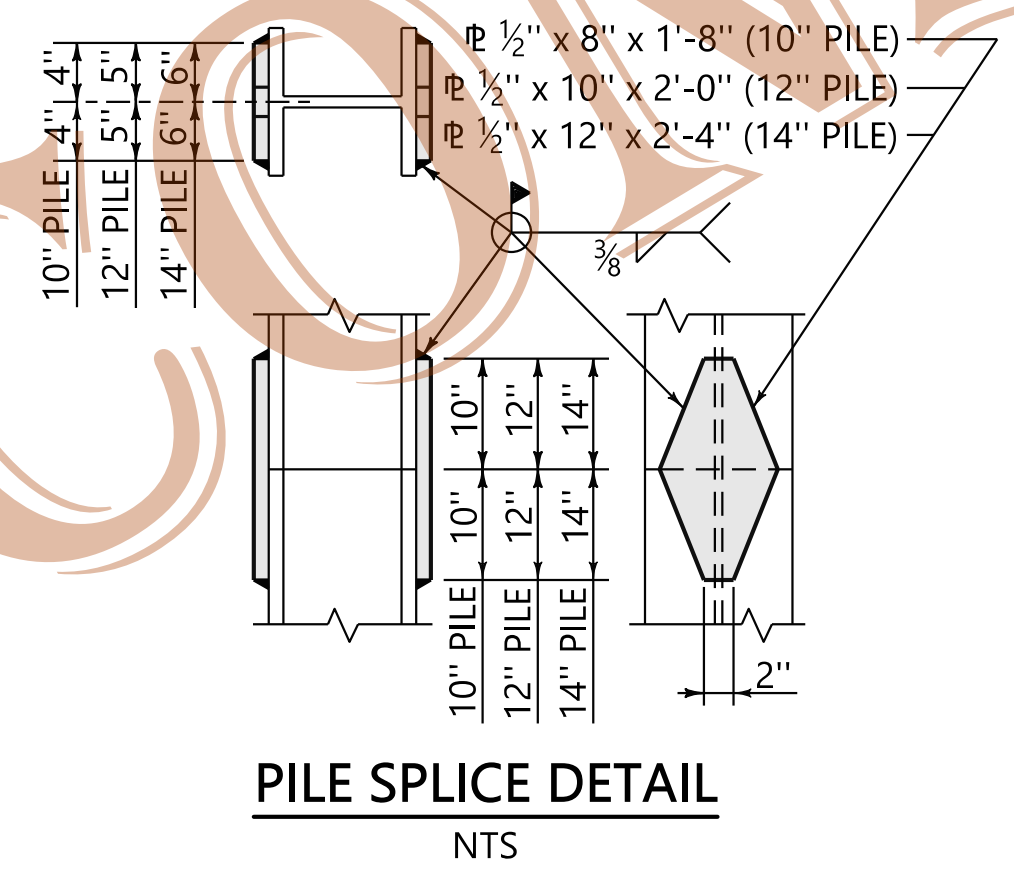
**BRIDGE JOINT ARMOR PLATE**



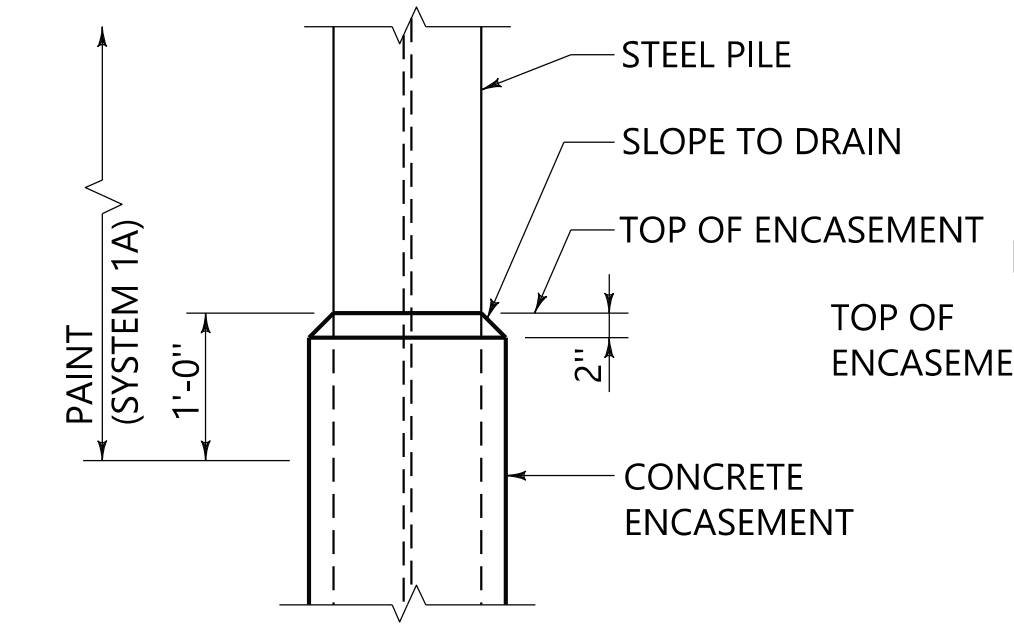
**JOINT SEAL DETAIL**



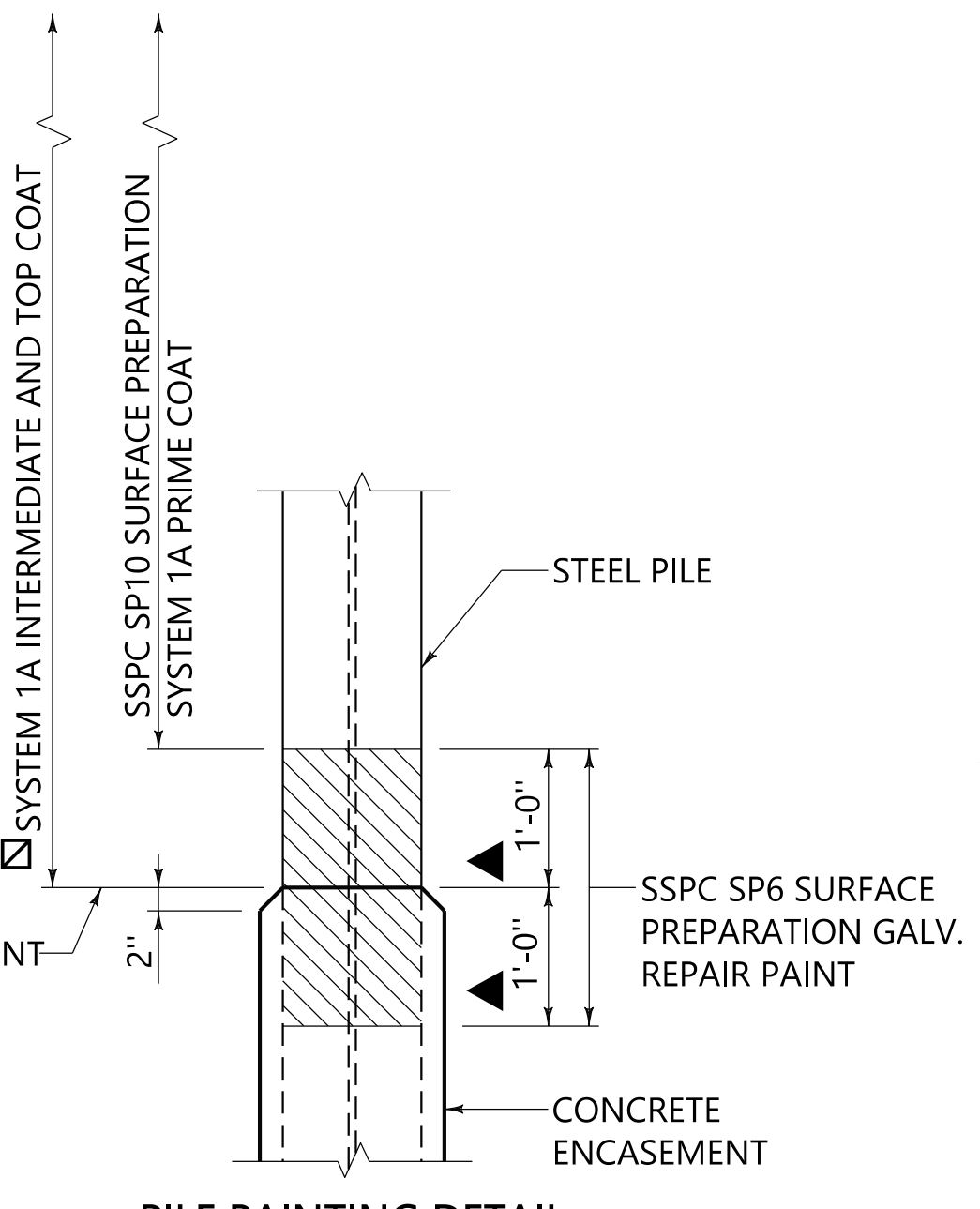
**PILE CAP CHANNEL**



**PILE SPlice DETAIL**

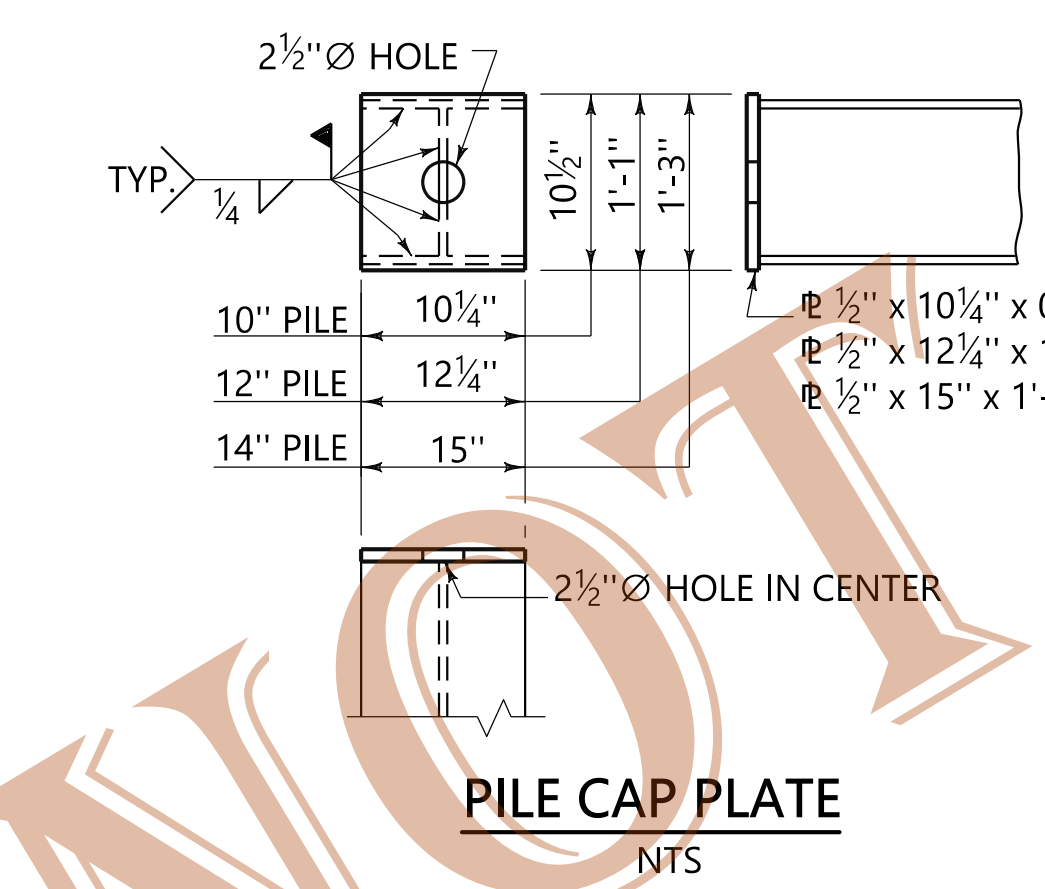


**PILE PAINTING DETAIL (OPTION "A")**



**PILE PAINTING DETAIL (OPTION "B")**

**PILE PAINTING DETAIL NOTES**



**PILE CAP PLATE**

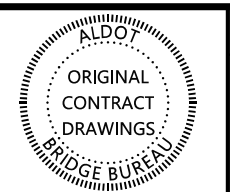
REVISIONS	
1.	REVISED ANCHOR BOLT AND WELL DETAIL WTC 8-17-2022

THIS BRIDGE SPECIAL PROJECT DRAWING FOR USE ONLY ON:  
PROJECT NO. \_\_\_\_\_  
COUNTY(S) \_\_\_\_\_

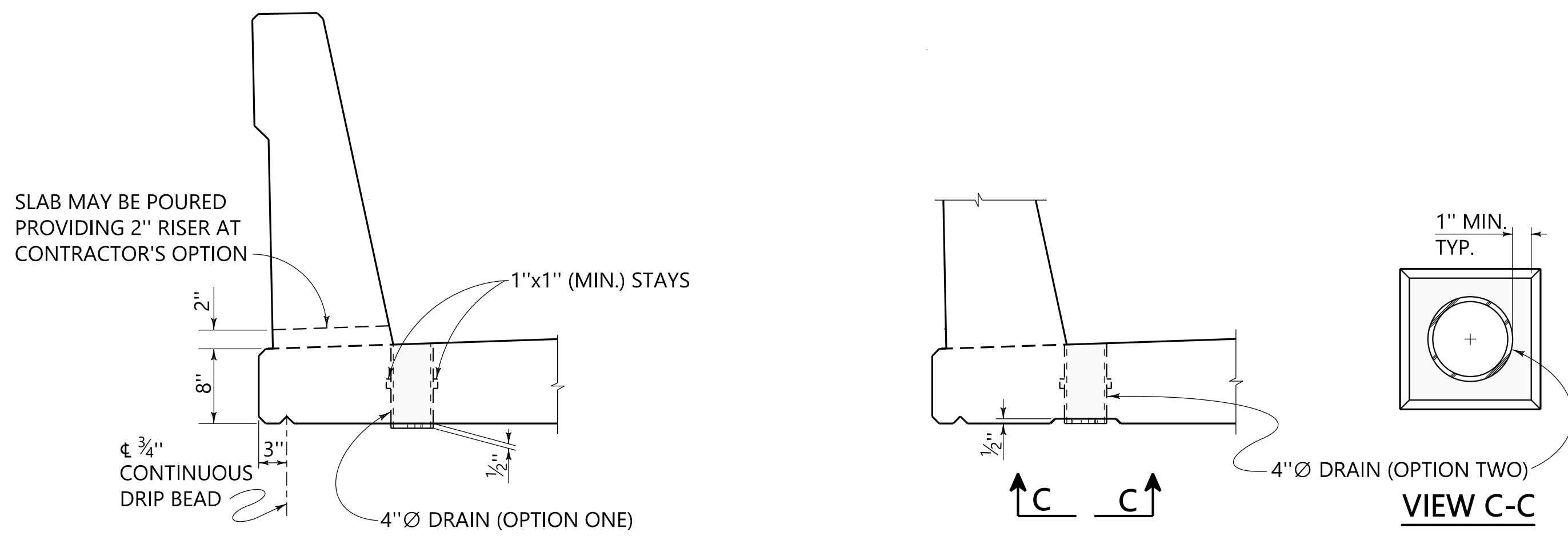
THESE DRAWINGS REPRESENT DESIGNS PREPARED FOR USE BY THE ALABAMA DEPARTMENT OF TRANSPORTATION AND ARE NOT TO BE COPIED, REPRODUCED, ALTERED, OR USED BY ANYONE, OR ANY ORGANIZATION, WITHOUT THE EXPRESSED WRITTEN CONSENT OF THE ALABAMA DEPARTMENT OF TRANSPORTATION REPRESENTATIVE AUTHORIZED TO APPROVE SUCH USE. ANYONE MAKING UNAUTHORIZED USE OF THESE DRAWINGS MAY BE PROSECUTED TO THE FULLEST EXTENT OF THE LAW.

ASSISTANT BRIDGE ENGINEER <i>Jaffrey T. Huner</i> DATE: 8/17/22	BRIDGE ENGINEER <i>Went. [Signature]</i> DATE: 8/17/22
BRIDGE STANDARD DETAILS	BRIDGE SPECIAL PROJECT DRAWING
	SBD-1
	SHEET 1 OF 2

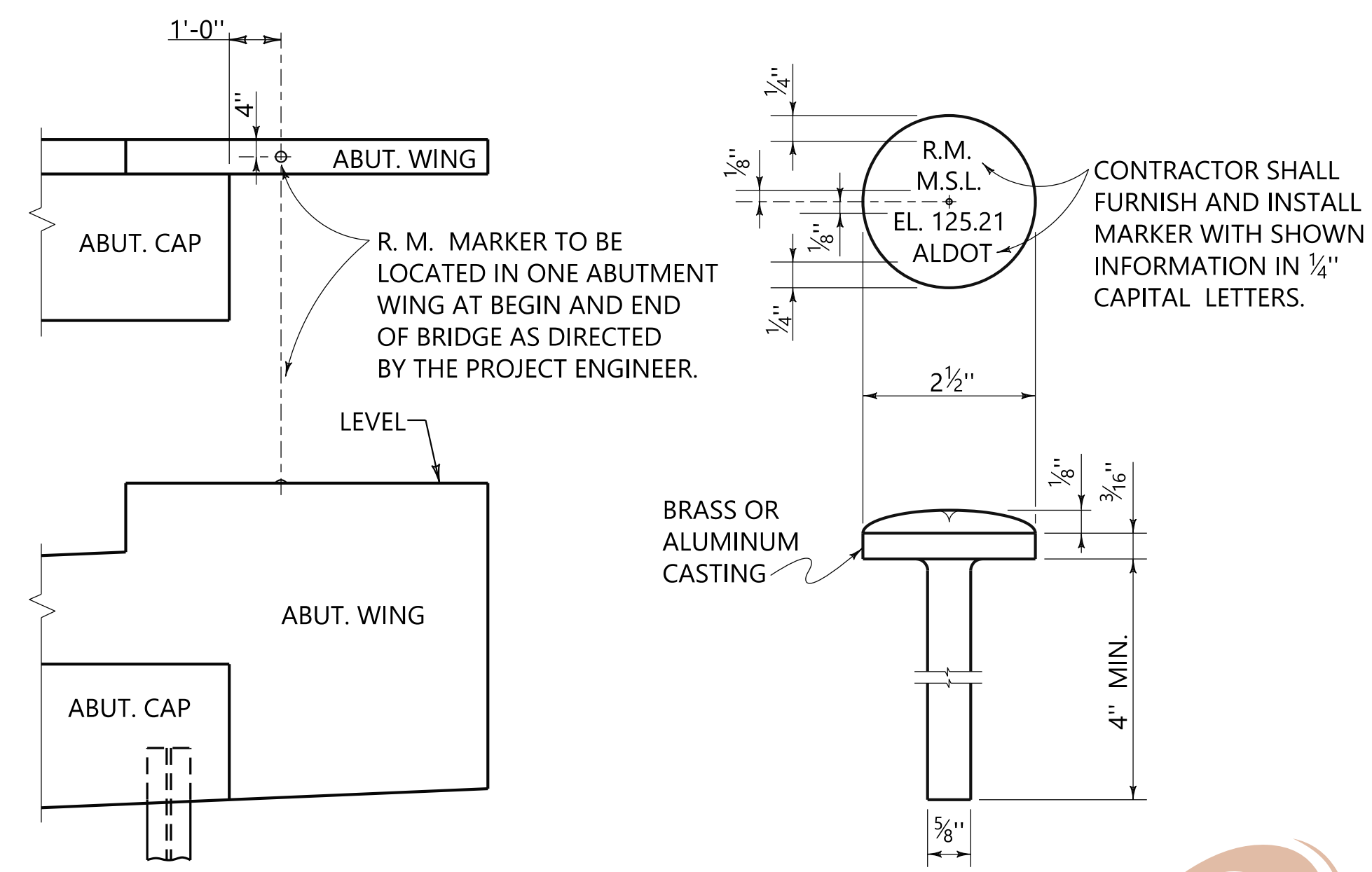
PLOT: 18-Apr-23 at 10:26  
\\bvrms002\bridge\standards\special\bridge\special\2023\DGN\1 Standard Bridge Details.dgn



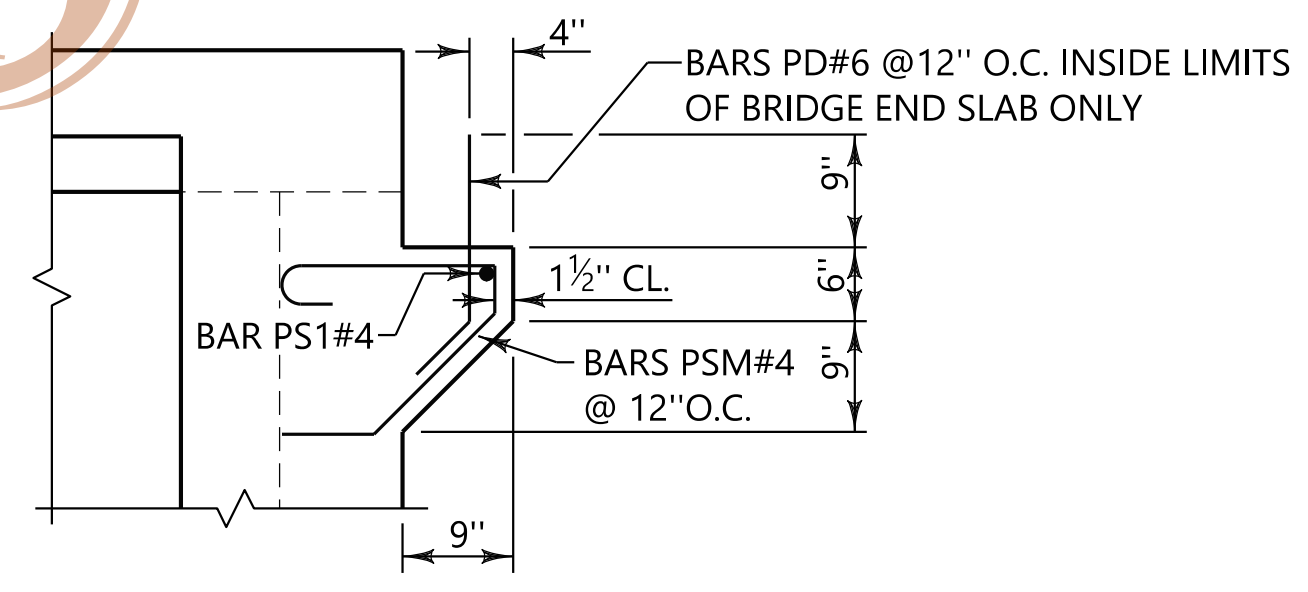
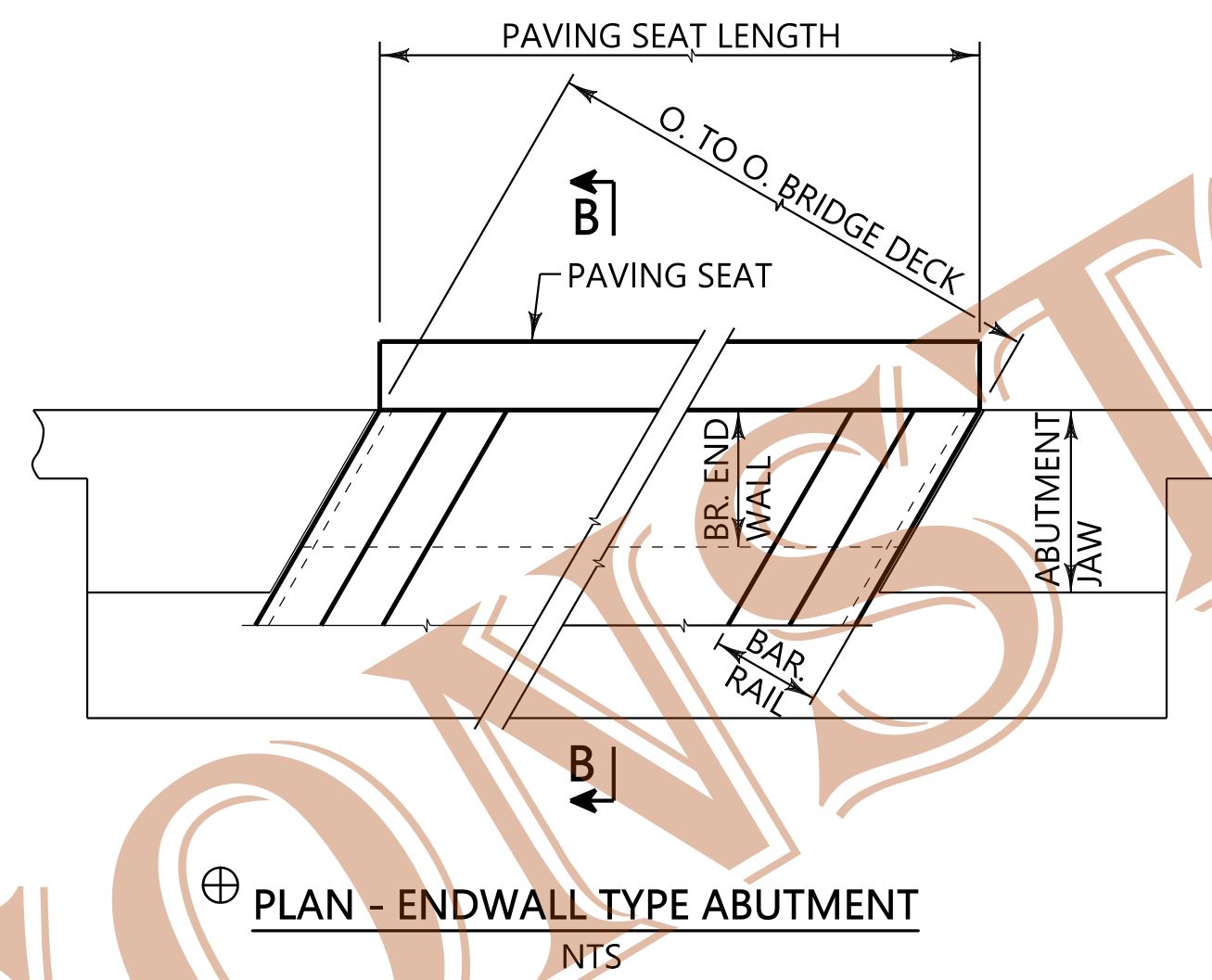
2"  
1"  
0  
SHEET REFERENCE



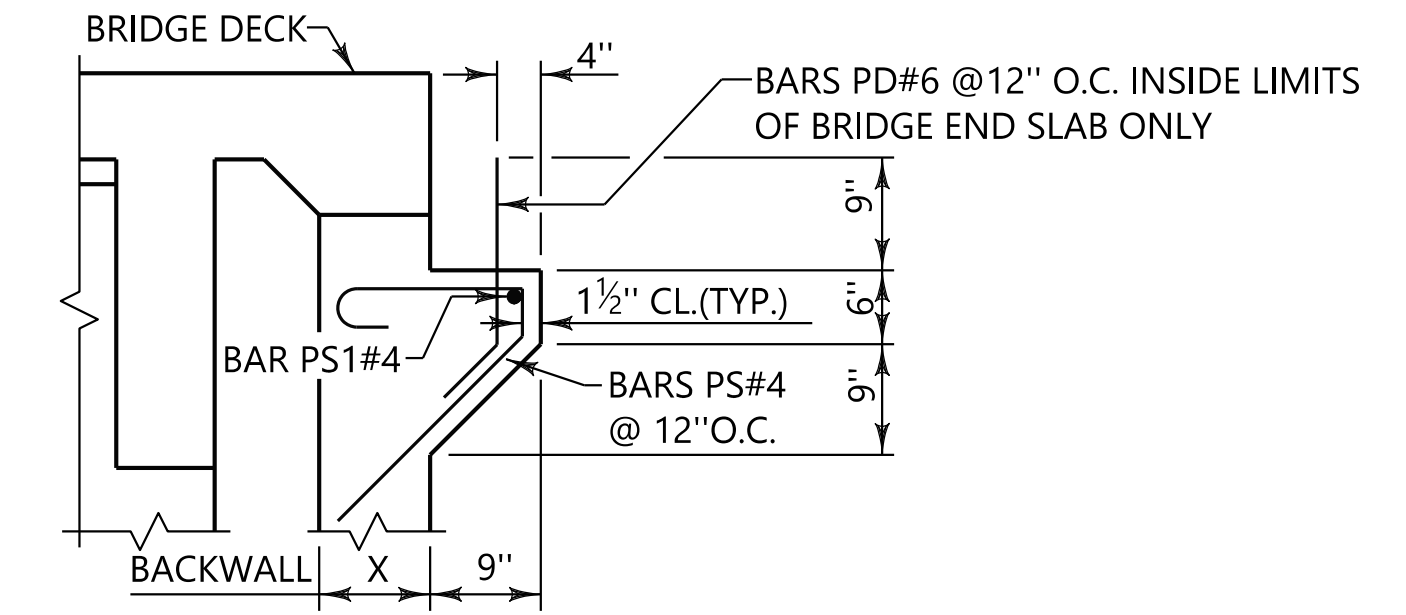
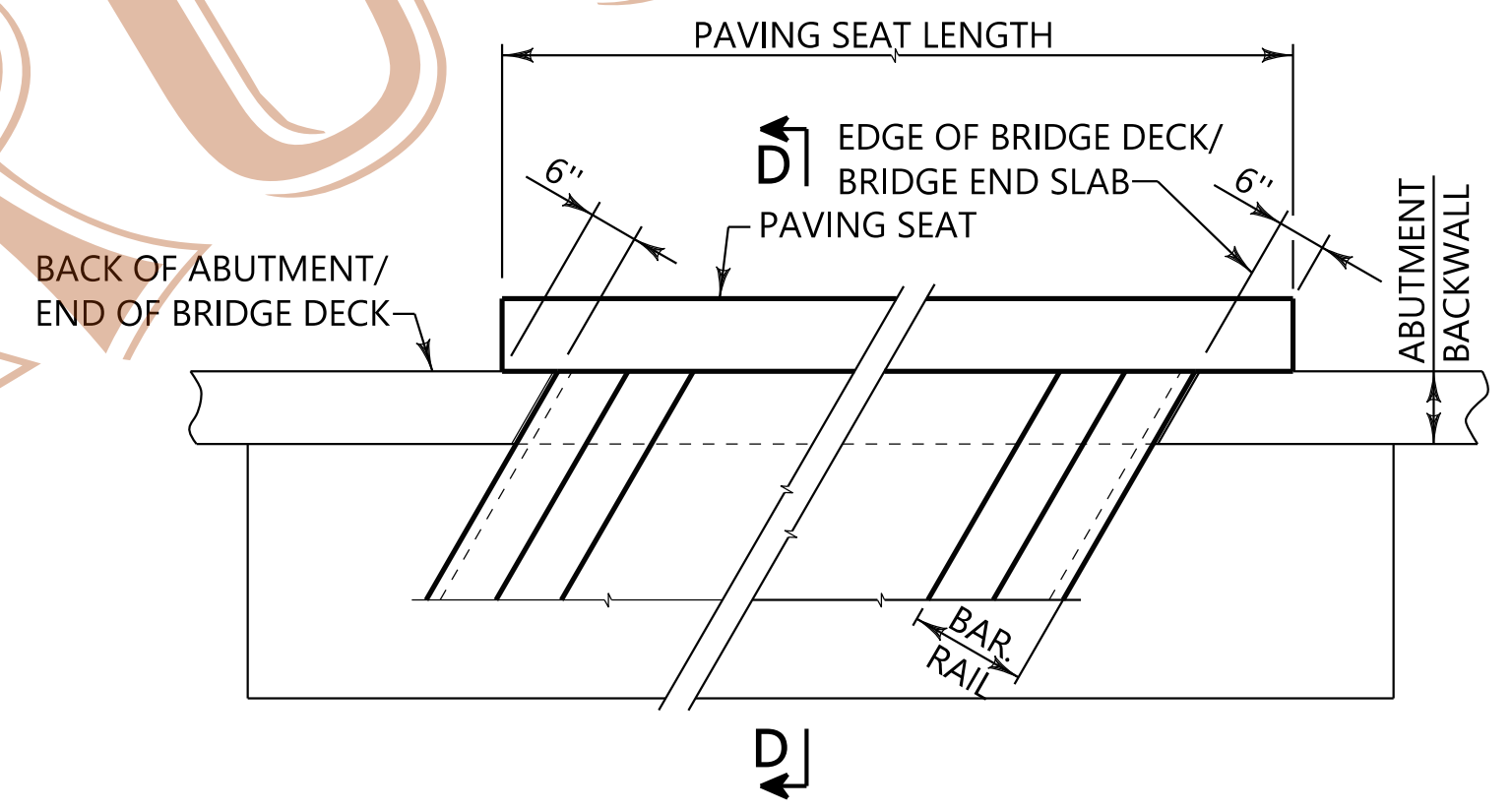
**MISCELLANEOUS SLAB DETAILS**  
NTS



**PERMANENT REFERENCE MARK DETAIL**  
NTS

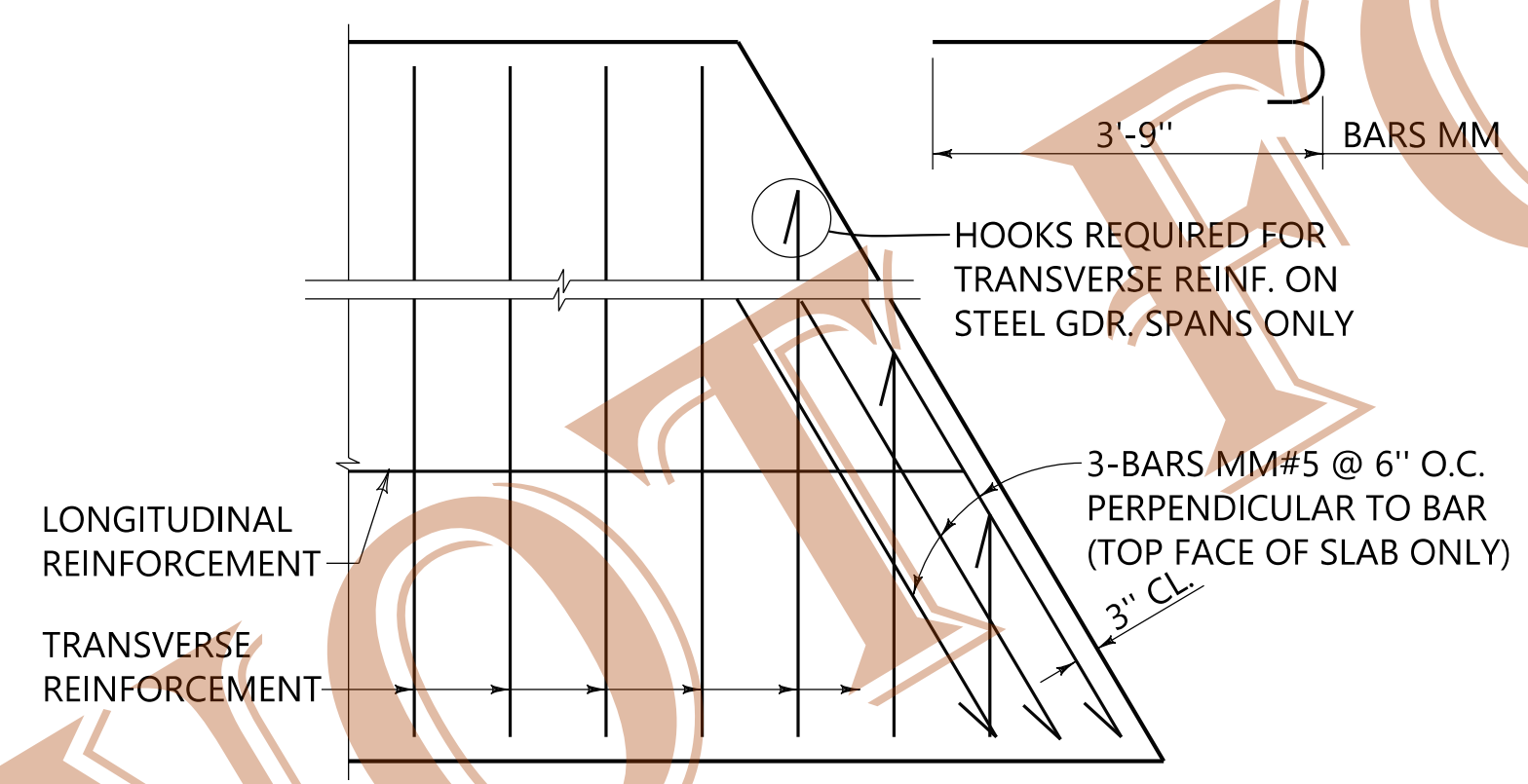


**SECTION B-B**  
NTS

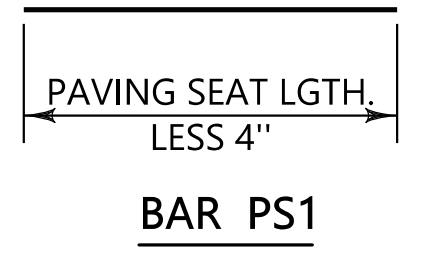
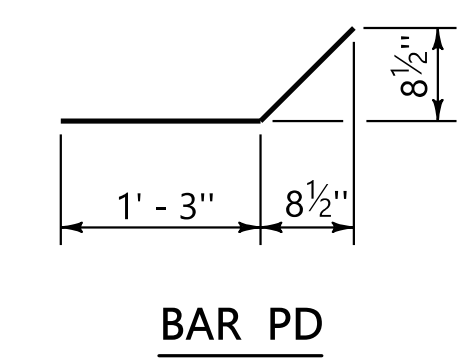
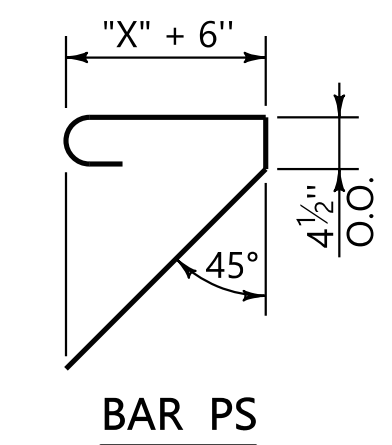
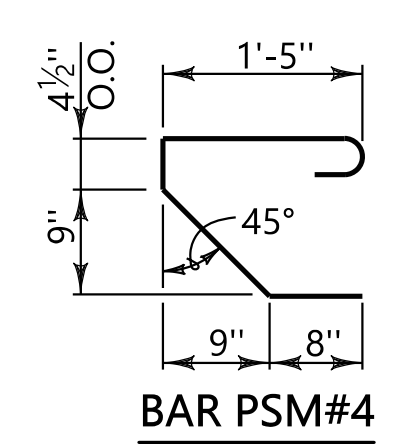


**PLAN - BACKWALL TYPE ABUTMENT**  
NTS

**SECTION D-D**  
NTS



**TYP. END OF DECK REINFORCEMENT DETAIL**  
WHEN BRIDGE IS SKEWED GREATER THAN 25°  
NTS



**PAVING SEAT DETAILS**

**SECTION D-D**  
NTS

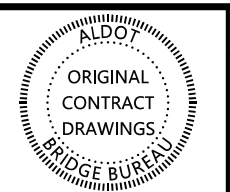
BRIDGE STANDARD DETAILS

BRIDGE SPECIAL PROJECT DRAWING  
SBD-1  
SHEET 2 OF 2

**NOTES:**

- MISCELLANEOUS SLAB DETAILS**
- DRAIN SHALL BE WHITE OR GRAY PVC (SANITARY) SEWER PIPE (ARTICLE 854.11). LOCATE AND ATTACH TWO (2) 1" x 1" (MIN.) STAYS 180° APART, AS SHOWN. STAYS SHALL BE MADE FROM PVC PIPE AND BONDED WITH PVC SOLVENT CEMENT. OMIT DRAINS OVER TRAFFIC LANES, UNPROTECTED SLOPE FILLS, HIGH SIDE IF SUPERELEVATED AND WITHIN 10'-0" OF BRIDGE ENDS AND 5'-0" OF INTERIOR BRIDGE JOINTS. SPACE @ 5'-0" O.C. UNLESS SHOWN OTHERWISE ON THE CONTRACT PLANS.
- PERMANENT REFERENCE MARK**
- BRASS MARKER TO BE CAST IN ONE PIECE, OUT OF LEADED-SEMI-RED BRASS ASTM B584 ALLOY 848 OR APPROVED EQUAL. ALUMINUM DISC SHALL BE ALUMINUM ALLOY CS 208 IN ACCORDANCE WITH ASTM B26 OR APPROVED EQUAL.
  - INFORMATION AND FIELD STENCILING (ILLUSTRATED IN LIGHT WT. LETTERS) SHALL BE THE RESPONSIBILITY OF THE STATE (COUNTY ON COUNTY PROJECTS).
- PAVEMENT SEAT**
- PAVING SEATS NOT USED WHEN BRIDGE JOINT IS ON INSIDE OF ABUTMENT BACKWALL. SEE BRIDGE SPECIAL PROJECT DWG. TYPE BES-450(IJ)
  - APPLIES TO BRIDGE JOINT ON OUTSIDE OF ABUTMENT BACKWALL ONLY. SEE BRIDGE SPECIAL PROJECT DWG. TYPE BES-450(OJ)
  - SEE BRIDGE SPECIAL PROJECT DWG. SERIES EBW FOR DETAILS.

PLOTTED: 14-Dec-21 at 09:21  
 \\bvrms002\bridge\standards\special\bridge\special\Drawings\SBD-1 Standard Bridge Details.dgn



REVISIONS
1. REVISED SKEW DEGREE IN DECK REINFORCEMENT KCM 12/14/21

THIS BRIDGE SPECIAL PROJECT DRAWING FOR USE ONLY ON:  
PROJECT NO. \_\_\_\_\_  
COUNTY(S) \_\_\_\_\_

THESE DRAWINGS REPRESENT DESIGNS PREPARED FOR USE BY THE ALABAMA DEPARTMENT OF TRANSPORTATION AND ARE NOT TO BE COPIED, REPRODUCED, ALTERED, OR USED BY ANYONE, OR ANY ORGANIZATION, WITHOUT THE EXPRESSED WRITTEN CONSENT OF THE ALABAMA DEPARTMENT OF TRANSPORTATION REPRESENTATIVE AUTHORIZED TO APPROVE SUCH USE. ANYONE MAKING UNAUTHORIZED USE OF THESE DRAWINGS MAY BE PROSECUTED TO THE FULLEST EXTENT OF THE LAW.