



ALABAMA DEPARTMENT OF TRANSPORTATION

1409 Coliseum Boulevard, Montgomery, Alabama 36110



Bob Riley
Governor

Joe McInnes
Transportation Director

September 27, 2005

To: Division Engineers
Office Engineer
Pre-Construction Engineers
Consultant Management Engineer
Construction Engineer

From: Mr. Don Arkle
Chief Design Engineer

By: Adenrele Odutola *AOO*
Roadway Design Engineer

Re: Electronic Data for Takeoff Purposes

As a service to bidders, ALDOT is supplying electronic text files of point station, offset, and elevations for the data shown in the cross sections. These files depict the original ground, subgrade, and final grade in a text format. The department's intent in supplying this information is to facilitate bidding efforts and eliminate the step of contractors digitizing the plan cross sections for earthwork analysis in preparing their bids.

A compact disc (CD) with these text files will be required to be turned into Office Engineer along with the plans on all large earthwork projects (where the earthwork is equal or greater than 200,000 CY or a project longer than 2 miles that will require moving earthwork all over the length of the project.) The CD should contain the 3 text files: existing ground, subgrade, and final grade for each project. A procedure for generating these text files can be found on the ALDOT website path:

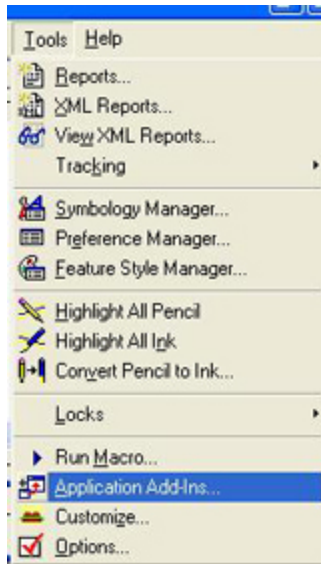
<http://www.dot.state.al.us/Doc/Bureaus/Design/Design+Index.htm>

AOO/LVS/sw

Attachments (2)

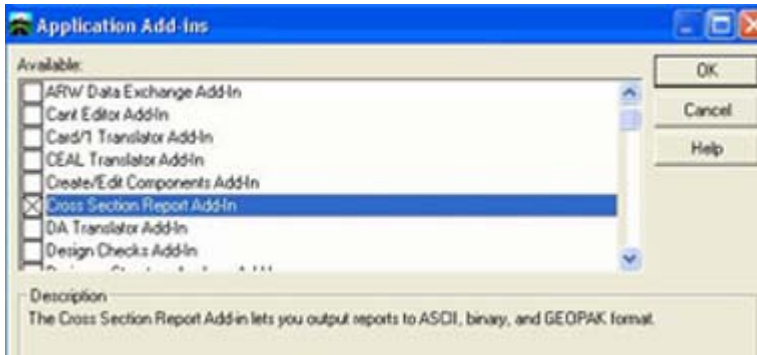
Pc: File

Process For Generating Cross Section .TXT Reports For Station/ Offset/ Elevation



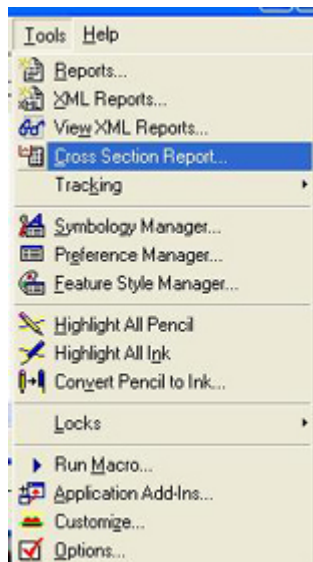
1. In the **.DGN** file containing the cross section set you wish to generate a surface report on, load all the InRoads **.DTM** surfaces in the cross section set.

2. In the InRoads window choose **Tools>Application Add-Ins**.



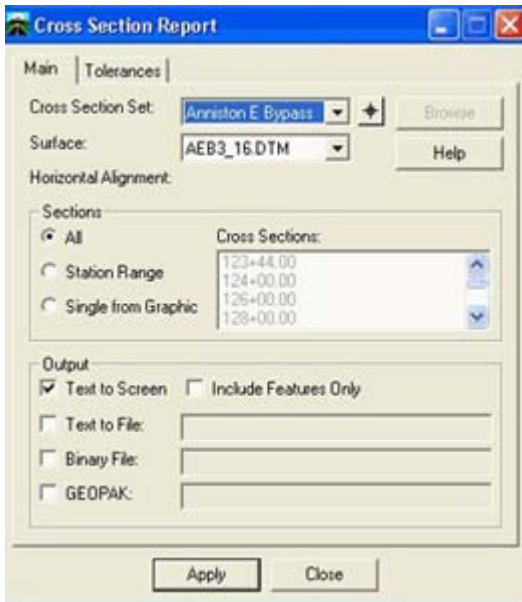
3. Make sure the “**Cross Section Report Add-In**” is Toggled.

4. Choose **OK**.



5. In the InRoads window choose **Tools>Cross Section Report**.

Process For Generating Cross Section .TXT Reports For Station/ Offset/ Elevation



6. In the Cross Section Report Dialog box select the **Main** Tab and make sure the following parameters are set:

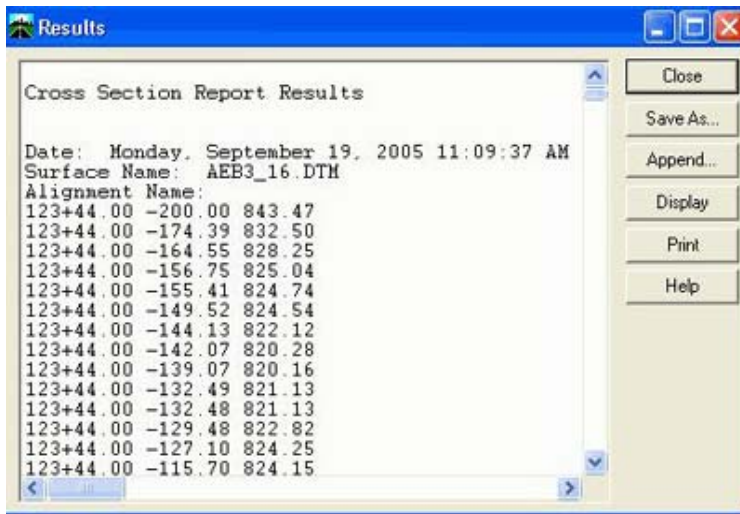
Cross Section Set: (select the set you wish to generate the .TXT report on)

Surface: (activate the **Existing Ground** .DTM you wish to generate the .TXT report on)

Horizontal Alignment: All

Output: Toggle only the **Text to Screen**

7. Click **Apply**.



8. You should generate a report that looks similar to this one containing the **Station/ Offset/ Elevation** for the surface picked.

9. Choose **Save As** and make sure to save it <name>.TXT

Repeat this process for the **Subgrade** and **Finish Grade** for each roadway in the project.