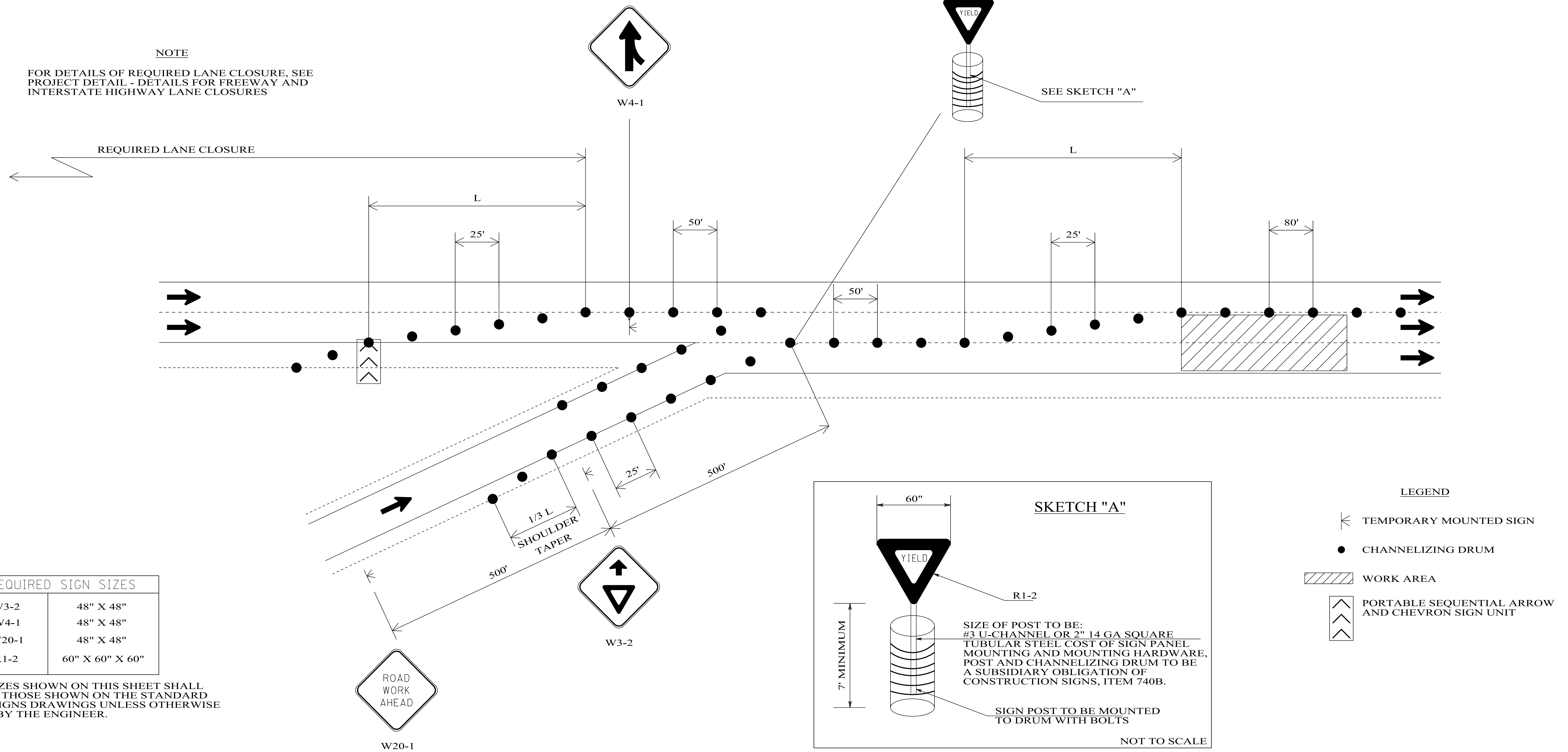


TEMPORARY TRAFFIC CONTROL PLAN SHEET

REFERENCE PROJECT NO	FISCAL YEAR	SHEET NO

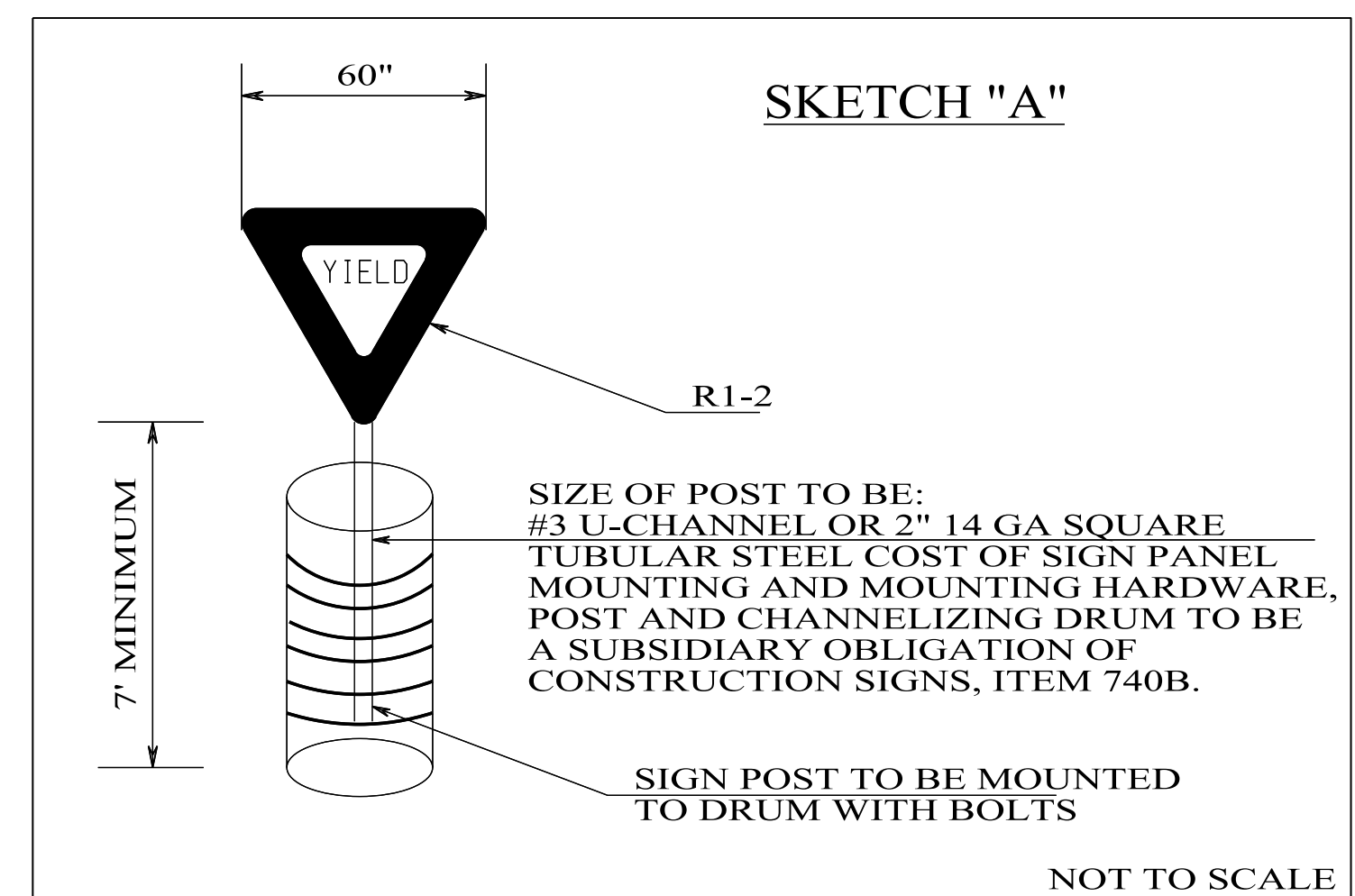
TYPICAL SCHEME FOR WORK IN THE VICINITY OF ENTRANCE RAMP



NOTE
FOR DETAILS OF REQUIRED LANE CLOSURE, SEE PROJECT DETAIL - DETAILS FOR FREEWAY AND INTERSTATE HIGHWAY LANE CLOSURES

REQUIRED SIGN SIZES	
W3-2	48" X 48"
W4-1	48" X 48"
W20-1	48" X 48"
R1-2	60" X 60" X 60"

THE SIGN SIZES SHOWN ON THIS SHEET SHALL SUPERCEDE THOSE SHOWN ON THE STANDARD HIGHWAY SIGNS DRAWINGS UNLESS OTHERWISE APPROVED BY THE ENGINEER.



LEGEND

- TEMPORARY MOUNTED SIGN
- CHANNELIZING DRUM
- WORK AREA
- PORTABLE SEQUENTIAL ARROW AND CHEVRON SIGN UNIT

GENERAL NOTES

1. THE W20-1 SIGNS SHOWN REQUIRED ON THIS DETAIL WILL NOT BE REQUIRED IF THE WORK AREA IS WITHIN PROJECT LIMITS WHERE POST MOUNTED ADVANCE WARNING SIGNS ARE ALREADY IN PLACE. IF THESE SIGNS ARE REQUIRED, THEY SHALL BE TEMPORARY MOUNTED AS SHOWN AND SHALL BE 48" X 48" IN SIZE.
2. FOR DAYTIME CLOSURES, 36" MINIMUM CONES MAY BE USED IN LIEU OF DRUMS FOR LANE CLOSURES AND PAID AS CONES. DRUMS SHALL BE USED IN TAPERS. FOR NIGHTTIME CLOSURES, 42" MINIMUM CONES MAY BE USED IN LIEU OF DRUMS FOR LANE CLOSURES AND PAID AS DRUMS. DRUMS SHALL BE USED IN TAPERS.