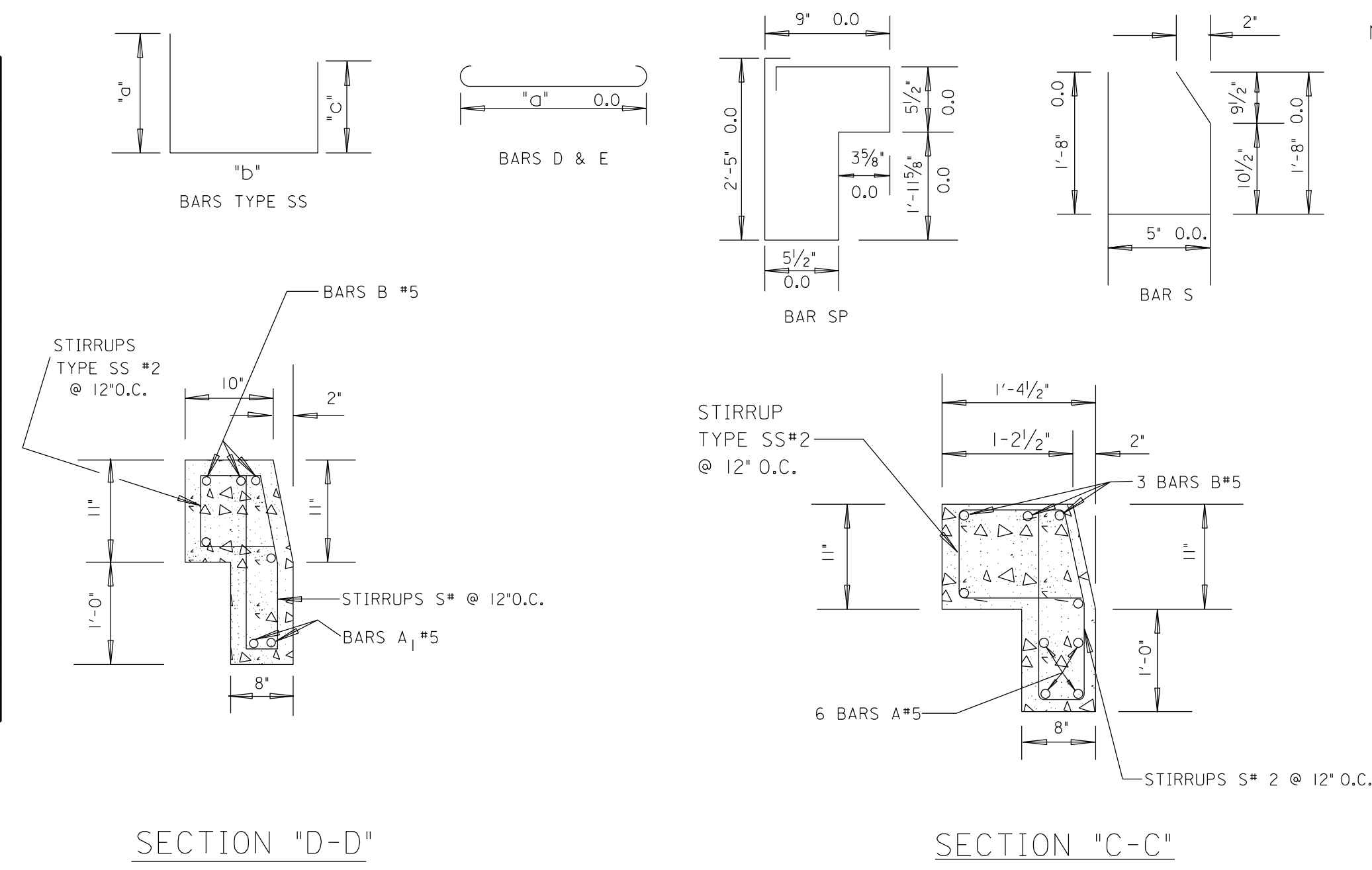
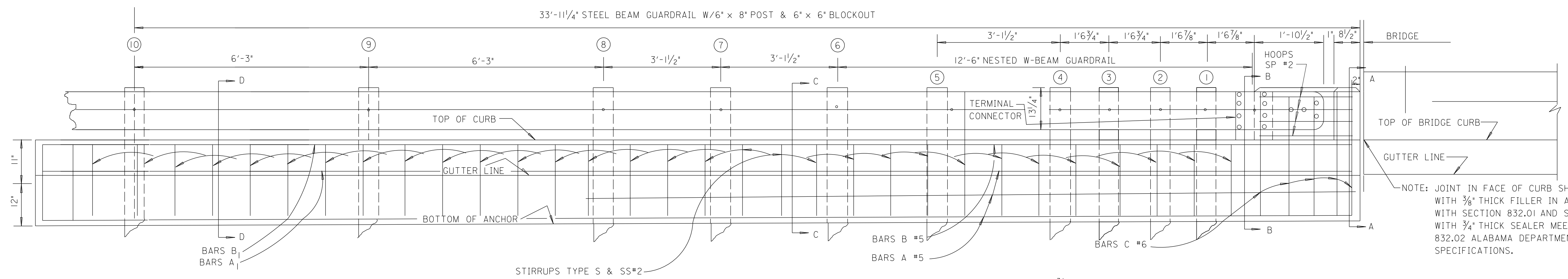


REFERENCE PROJECT NO	FISCAL YEAR	SHEET NO

BAR	NO.	SIZE	TOTAL LENGTH	'a'	'b'	'c'
A	6	#5	22'-0"	22'-0"		
A ₁	4	#5	15'-4"	15'-4"		
B	3	#5	22'-0"	22'-0"		
B ₁	3	#5	15'-4"	15'-4"		
C	10	#6	3'-0"	3'-0"		
SP	4	#2	7'-0 1/2"	SEE DETAILS		
D	5	#4	3'-1"	2'-3"		
E	5	#4	2'-11"	2'-1"		
S	32	#2	3'-8 1/2"	SEE DETAILS		
SS	15	#2	1'-11 1/2"	9"	8"	7"
SS ₁	1	#2	2'-0 1/2"	9 1/2"	8"	7 1/2"
SS ₂	1	#2	2'-2 1/2"	10 1/2"	8"	8 1/2"
SS ₃	1	#2	2'-5"	11 3/4"	8"	9 3/4"
SS ₄	1	#2	2'-7 1/2"	1'-1"	8"	11"
SS ₅	13	#2	2'-8 1/2"	1'-1 1/2"	8"	11 1/2"

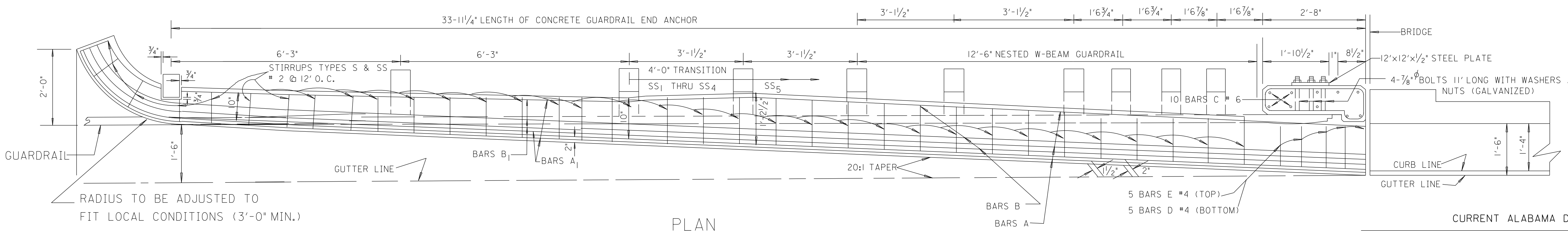


NOTE: ALL HOOPS & STIRRUPS 1/2" CLEAR OF FACE



NOTE: JOINT IN FACE OF CURB SHALL BE FILLED WITH 3/8" THICK FILLER IN ACCORDANCE WITH SECTION 832.01 AND SEALED WITH 3/4" THICK SEALER MEETING SECTION 832.02 ALABAMA DEPARTMENT OF TRANSPORTATION SPECIFICATIONS.

NOTE: THE 33'-1 3/4" OF CLASS A, TYPE 2, BEAM GUARDRAIL SHOWN ON THIS DRAWING IS A PART OF THE BRIDGE END ANCHOR.



RADIUS TO BE ADJUSTED TO FIT LOCAL CONDITIONS (3'-0" MIN.)

--SPECIFICATIONS--

CURRENT ALABAMA DEPARTMENT OF TRANSPORTATION

- NOTES
- THE DIMENSIONS SHOWN ON THIS SHEET ARE IN U.S. CUSTOMARY UNITS OF MEASUREMENT. IF THIS SHEET IS INSERTED IN A SET OF PLANS THAT REQUIRE METRIC UNITS OF MEASUREMENTS, THE CONTRACTOR SHALL BE RESPONSIBLE FOR THE ACCURATE CONVERSION OF ALL UNITS TO METRIC.
 - THIS DRAWING REPRESENTS A GUARDRAIL END ANCHOR, TYPE 2-A, AS INSTALLED DURING A PREVIOUS PROJECT. IN ORDER TO RETROFIT THE EXISTING END ANCHOR THE FOLLOWING ITEMS OF WORK MUST BE PERFORMED:
 - DRIVE TWO ADDITIONAL POSTS (SHOWN ABOVE AS POSTS #1 & #3) AND SUPPLY BLOCKOUTS AT THE BRIDGE END SO THAT POST SPACING WILL BE 1'-6 3/4" FOR THE FIRST FOUR POSTS FROM THE BARRIER ATTACHMENT. THESE POSTS AND BLOCKOUTS MUST BE THE SAME MATERIAL AS THE EXISTING POSTS AND BLOCKOUTS.
 - REMOVE THE BACKUP PLATES THROUGH POST #6 AND ADD A NESTED BEAM OF GUARDRAIL (ONE 12'-6" SECTION OF RAIL SET INSIDE THE EXISTING SECTION OF RAIL.) THE NESTED BEAM OF GUARDRAIL SHALL BE INSTALLED BETWEEN THE EXISTING RAIL AND THE BLOCKOUT.
 - ANY HARDWARE REMOVED DURING THE ABOVE ITEMS OF WORK SHALL BE REPLACED WITH NEW HARDWARE THAT MEETS CURRENT ALDOT & AASHTO SPECIFICATIONS.
 - THE COST FOR COMPLETE INSTALLATION AS DESCRIBED ABOVE, INCLUDING MATERIAL & LABOR, SHALL BE PAID FOR UNDER ITEM 630C-055, GUARDRAIL END ANCHOR, TYPE 2A (RETROFIT).

THIS DRAWING REPRESENTS DESIGNS PREPARED FOR USE BY THE ALABAMA DEPARTMENT OF TRANSPORTATION AND IS NOT TO BE COPIED, REPRODUCED, ALTERED, OR USED BY ANYONE, OR ANY ORGANIZATION, WITHOUT THE EXPRESSED WRITTEN CONSENT OF THE ALABAMA DEPARTMENT OF TRANSPORTATION REPRESENTATIVE AUTHORIZED TO APPROVE THIS USE. ANYONE MAKING UNAUTHORIZED USE OF THIS DRAWING MAY BE PROSECUTED TO THE FULLEST EXTENT OF THE LAW.

REVISIONS
1. Modified to fit a Retrofit situation, 04-23-98 by C.J.S.

ALABAMA DEPARTMENT OF TRANSPORTATION
1409 COLISEUM BOULEVARD
MONTGOMERY, AL 36130-3050

DESIGN BUREAU SPECIAL DRAWING
SPECIAL DRAWING OF GUARDRAIL END ANCHOR TYPE 2-A (RETROFIT) TO BE USED AT BRIDGES WITH 1'-6" SAFETY CURB

SPECIAL DRAWING NO. INDEX NO.
SPECIAL PROJECT DETAIL

Bureau Std Engr: L.V.S.
DRAWN BY: DATE DRAWN: 07-17-89

NOT TO SCALE