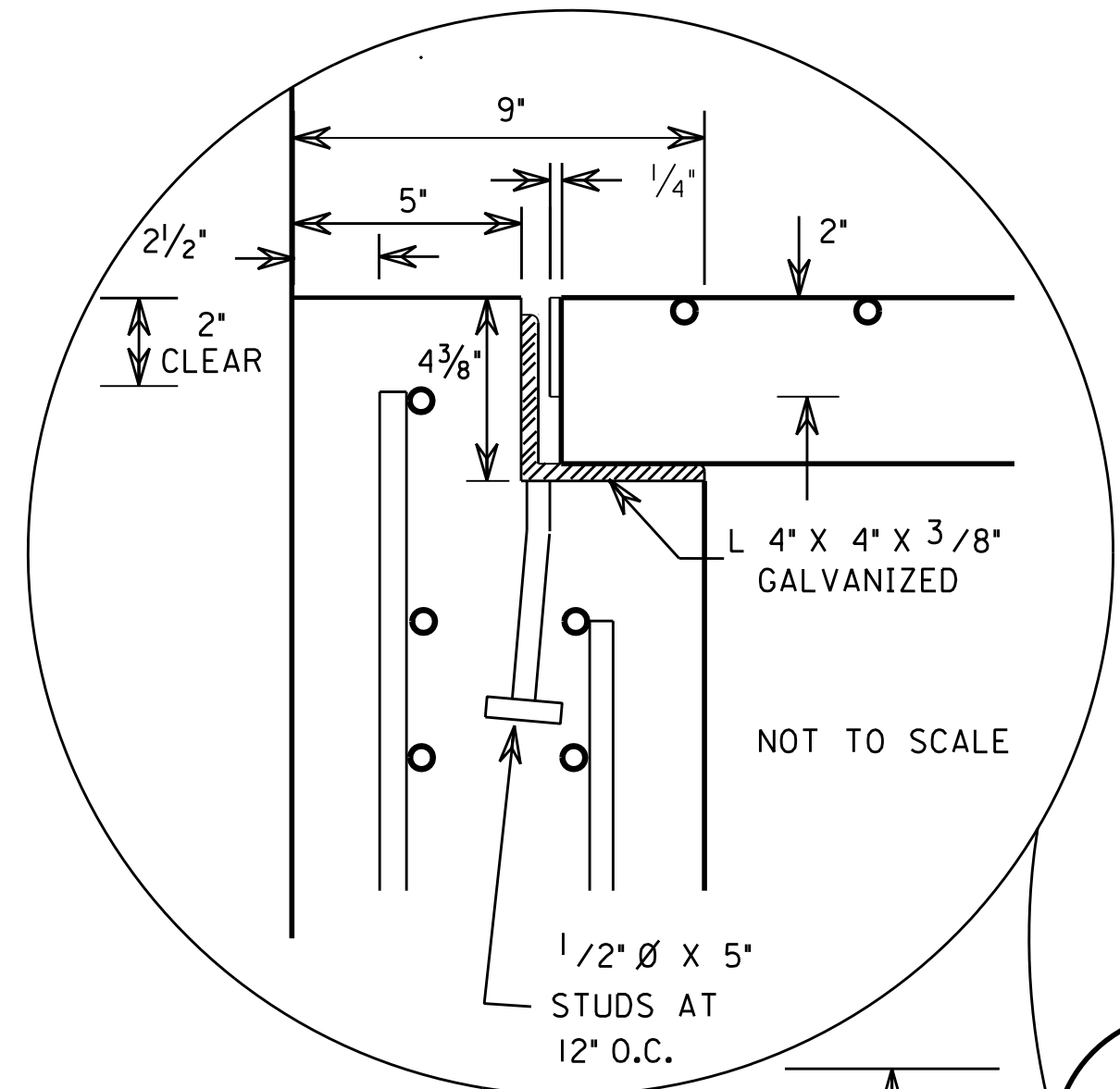
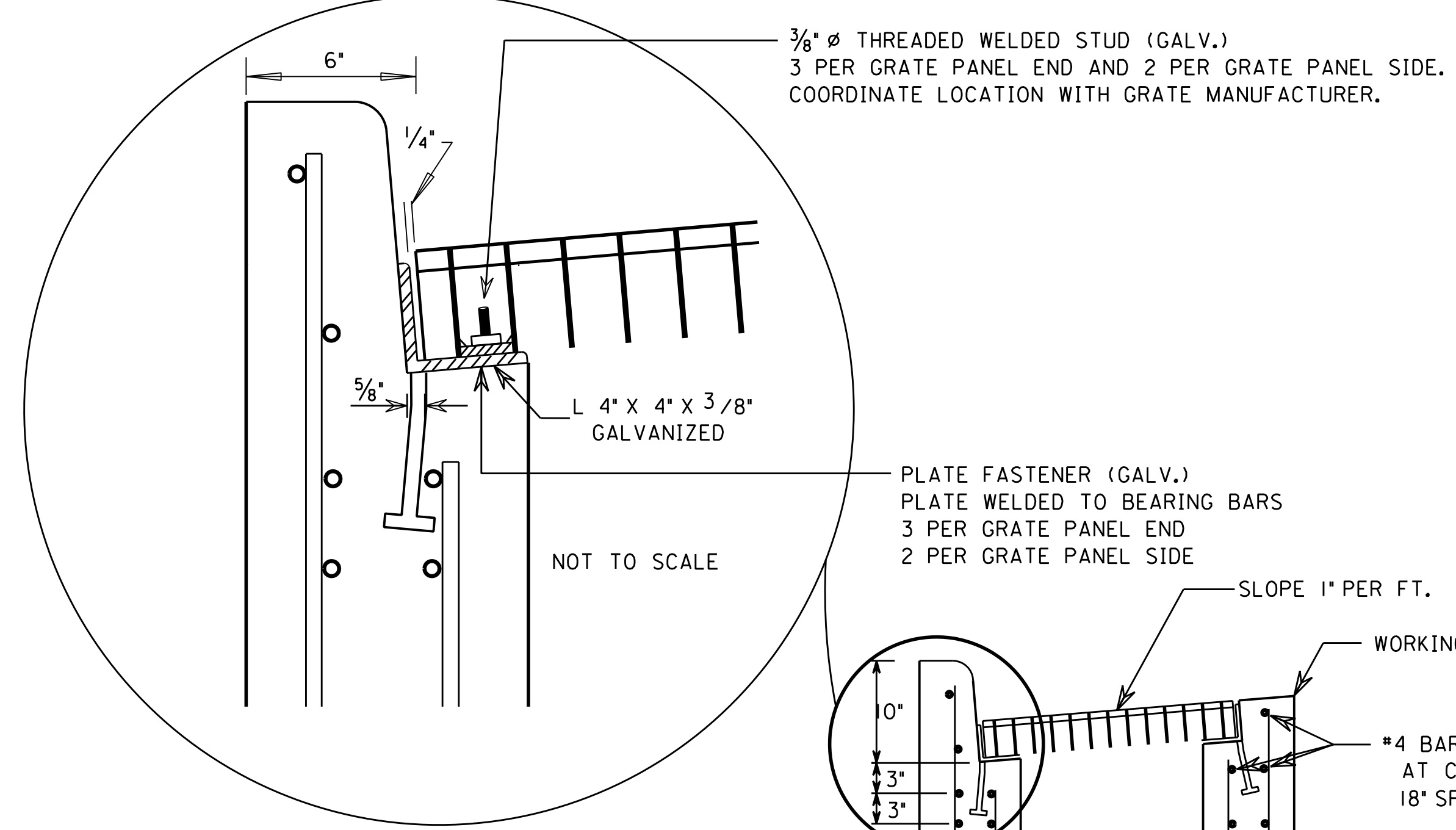
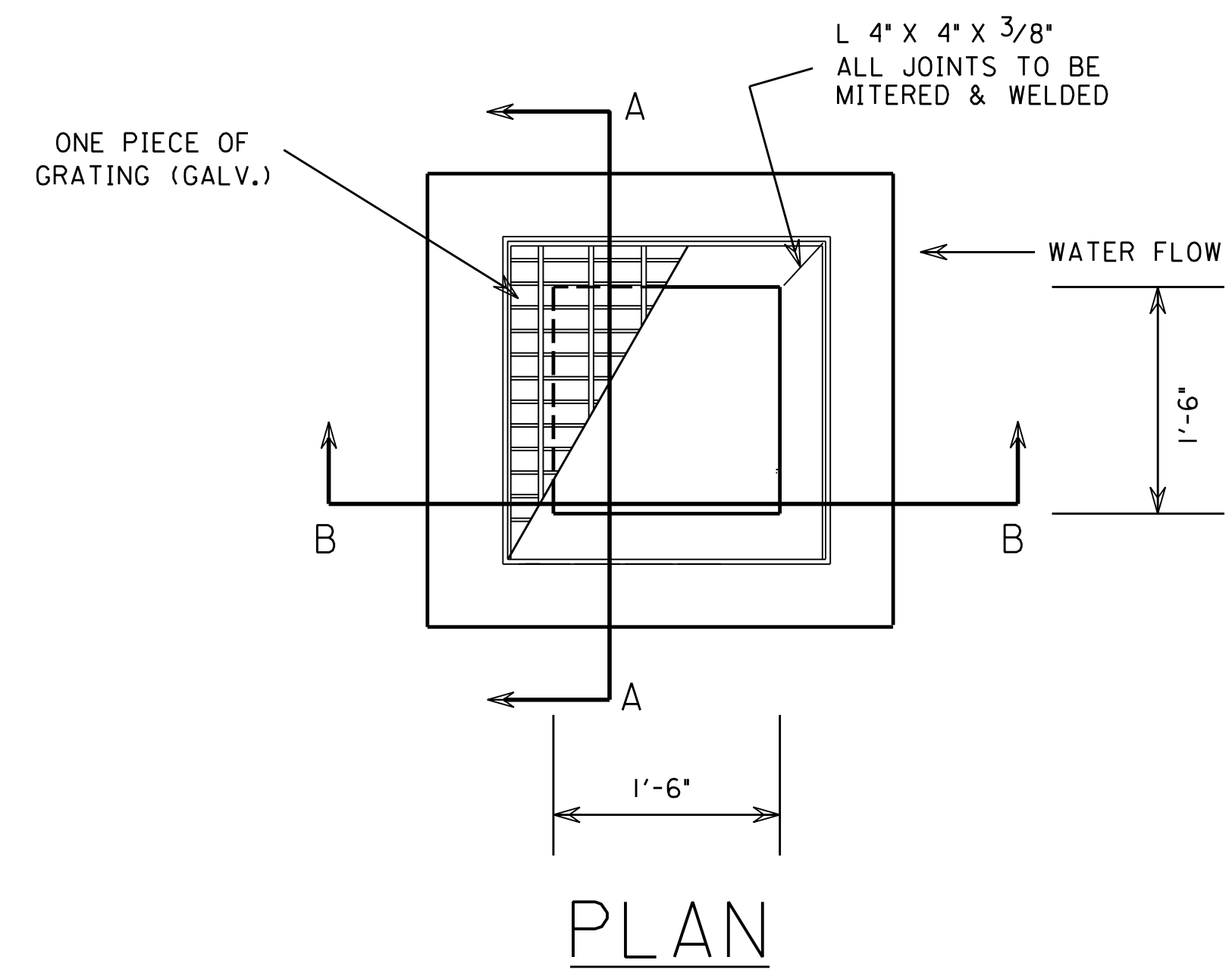
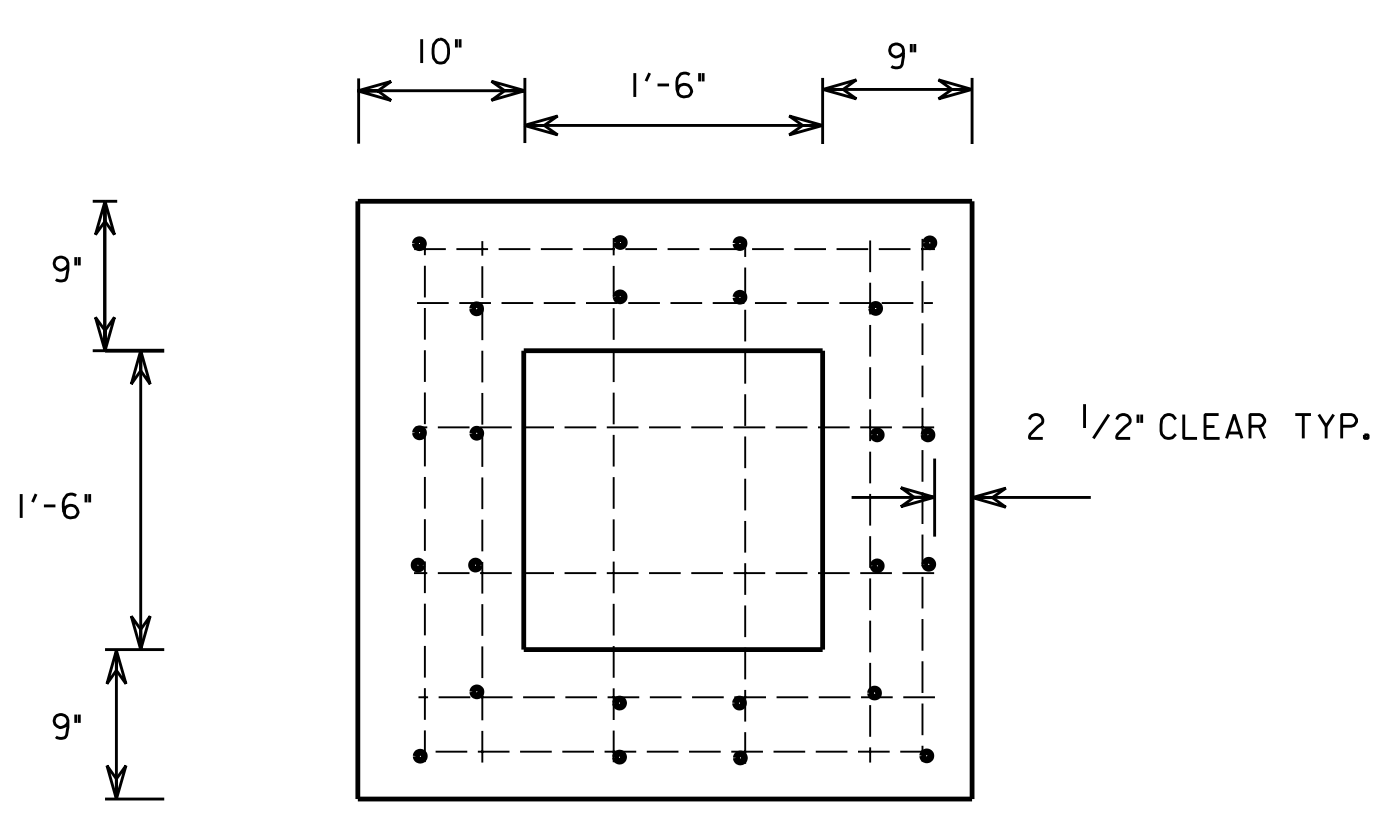
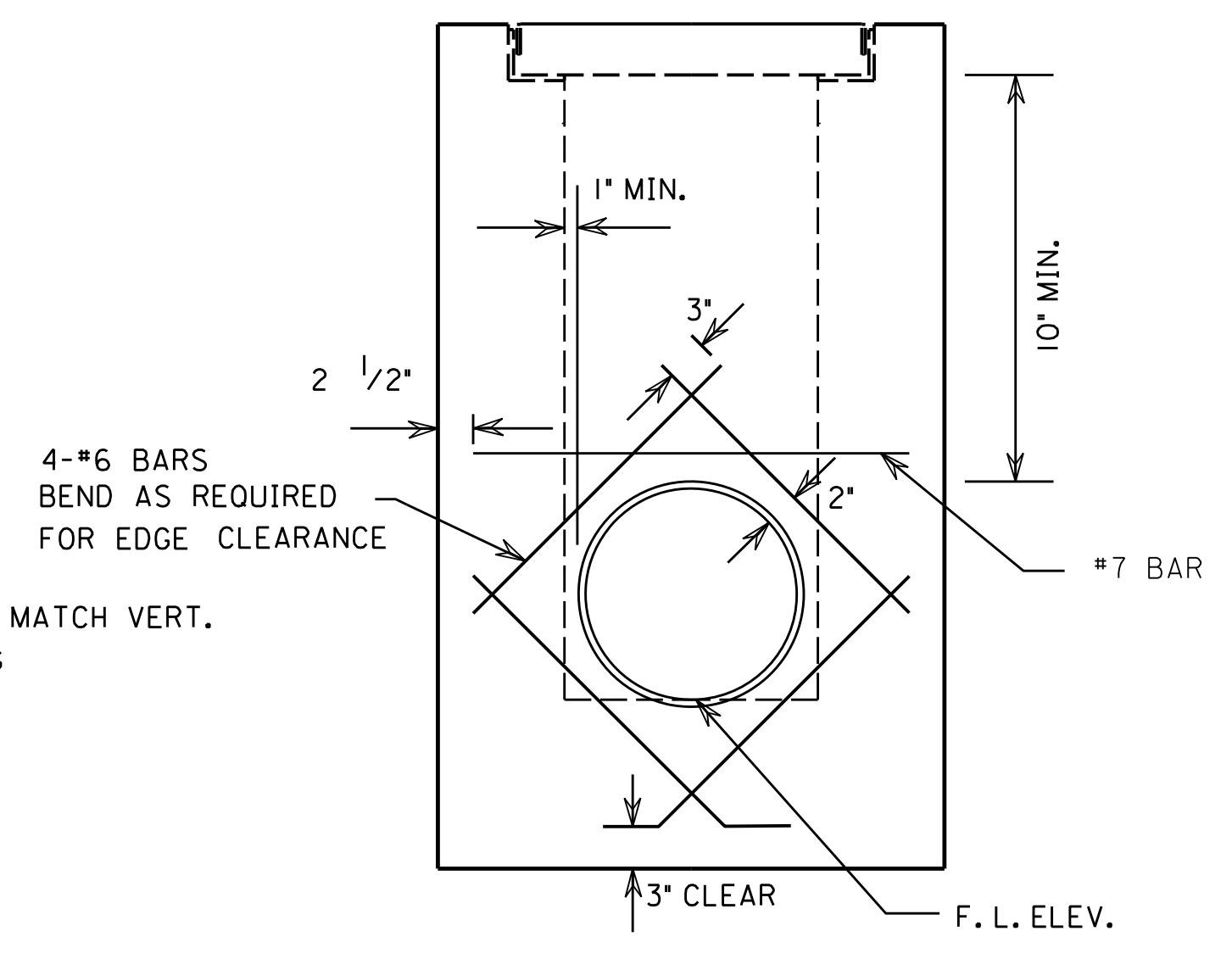
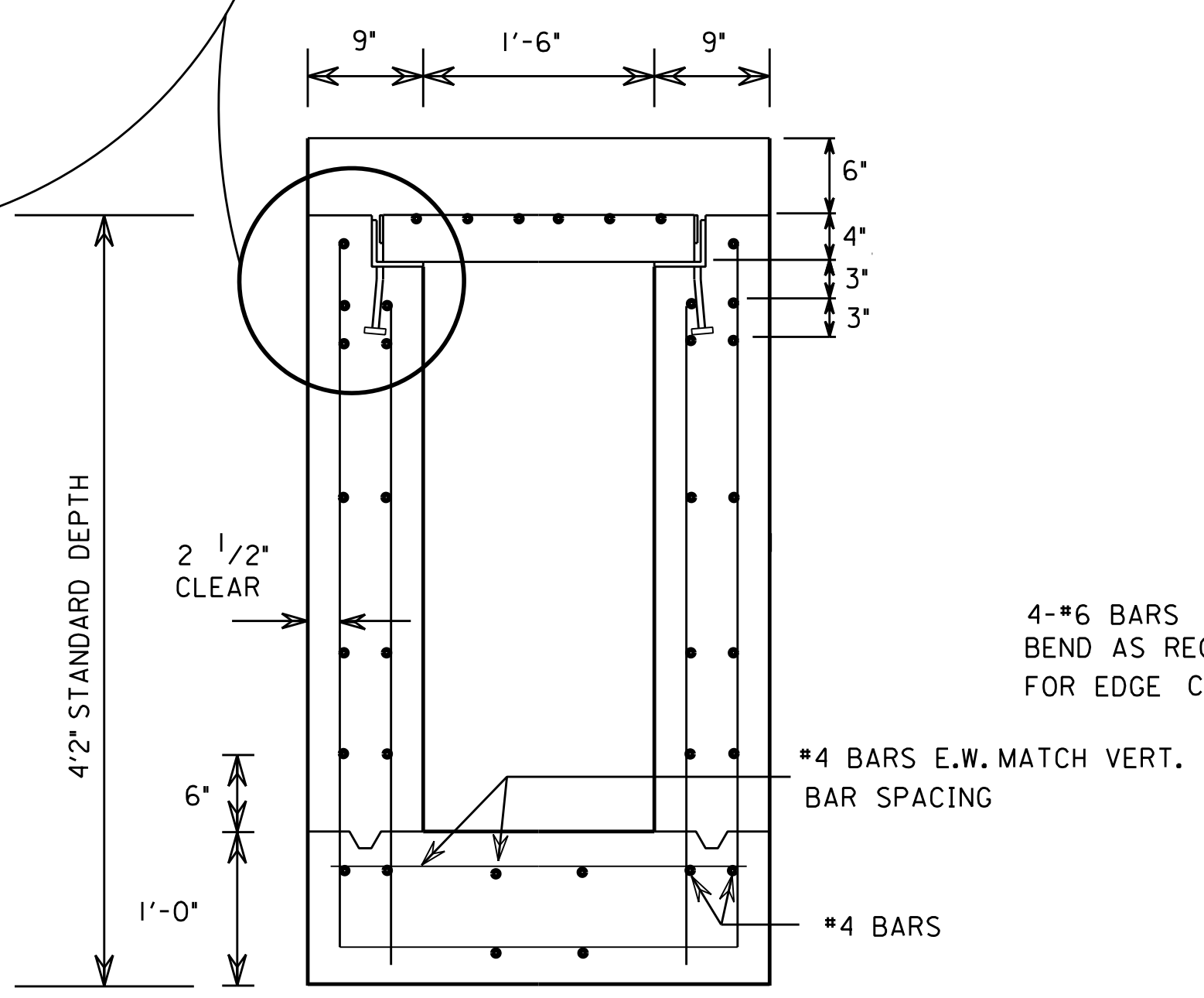
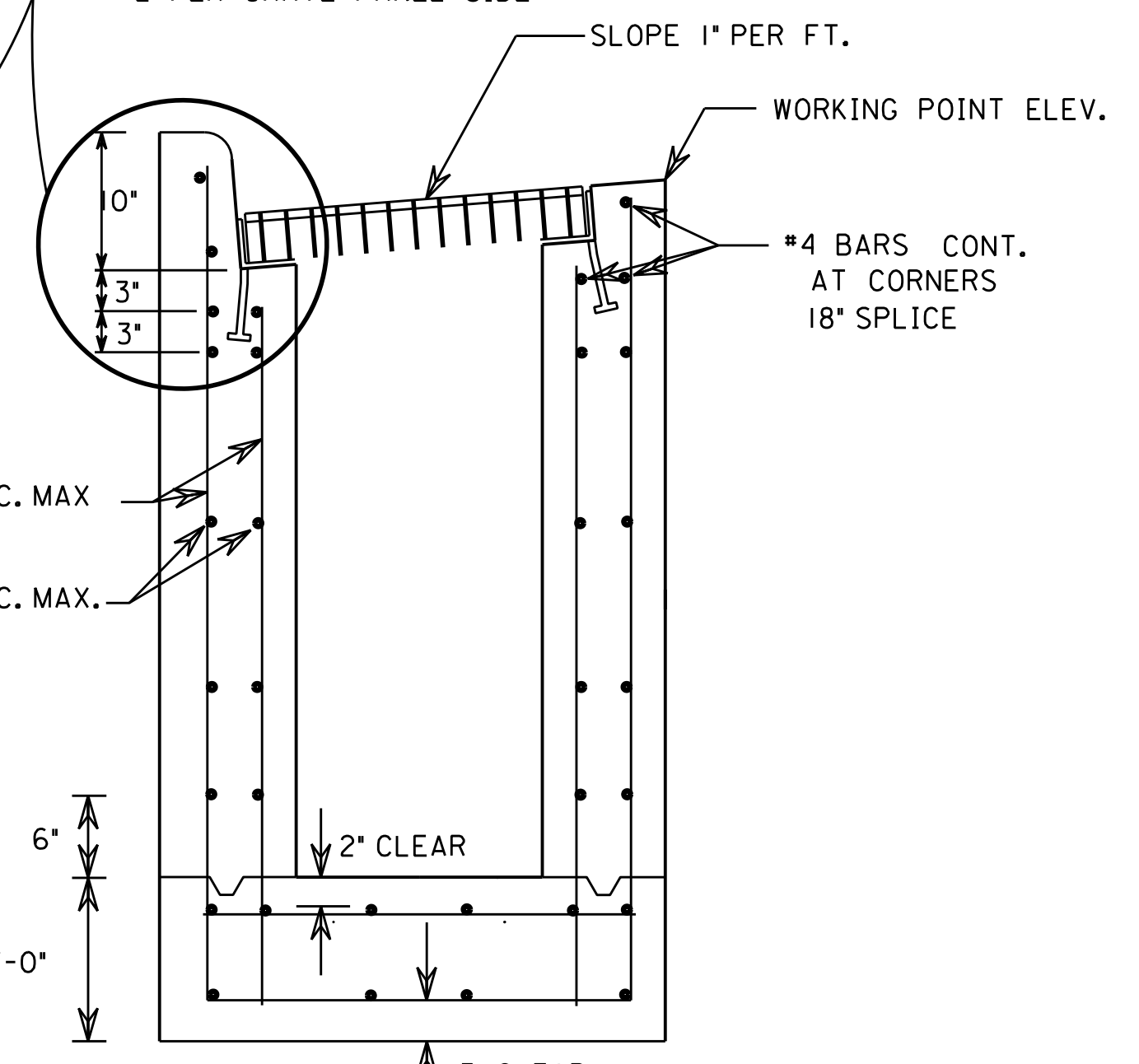


REFERENCE PROJECT NO	FISCAL YEAR	SHEET NO




GRATE SPECIFICATION
 STEEL GRATING TO BE STYLE HW (HEAVY WELD) TYPE P18A AS MANUFACTURED BY IKG INDUSTRIES OR APPROVED EQUAL. THE GRATING MATERIAL SHALL CONFORM TO ASTM A36 STEEL SPECIFICATION FOR THE MAIN (BEARING) BARS. MAIN BARS TO BE 4 INCHES DEEP BY 1/4 INCHES THICK, SPACED AT 1 7/8 INCH CENTERS. THE CROSS BARS SHALL BE WELDED AT EACH INTERSECTION OF THE MAIN BEARING BARS AND CROSS BARS USING A 3/8 INCH DIAMETER CROSS BAR, SPACED 4 INCHES ON CENTER. CROSS BARS SHALL BE FLUSH WITH THE TOP OF THE GRATING. THE GRATING SHALL SPAN 38 INCHES MAXIMUM SPAN AND SATISFY THE AASHTO LOADINGS FOR H-20/HS-20. THE GRATES, GRATES SEATS, NUTS, BOLTS, AND MISCELLANEOUS METAL HARDWARE SHALL BE HOT-DIPPED GALVANIZED AFTER FABRICATION. GRATE AND SEAT SHALL BE A SUBSIDIARY OBLIGATION OF ITEM NUMBER 621-C INLET, TYPE 'PB'.



INLETS WILL BE PAID FOR PER EACH STANDARD INLET COMPLETE IN PLACE AS SHOWN ON THIS DRAWING. A COMPLETE INLET SHALL BE CONSTRUCTED TO DEPTH SHOWN. THE DEPTH SHALL BE TAKEN FROM TOP OF INLET TO BOTTOM OF BOX. PAYMENT SHALL INCLUDE COST OF GRATE, SEAT, ANGLE. IF FOUND NECESSARY DURING CONSTRUCTION TO CARRY AN INLET TO A GREATER DEPTH THAN SHOWN, THE CONTRACTOR WILL BE PAID FOR THIS EXTRA DEPTH BY INLET UNITS, MEASURED IN INCREMENTS OF TWO (2) FEET.

--SPECIFICATIONS--
 CURRENT ALABAMA HIGHWAY DEPARTMENT

THIS DRAWING REPRESENTS DESIGNS PREPARED FOR USE BY THE ALABAMA DEPARTMENT OF TRANSPORTATION AND IS NOT TO BE COPIED, REPRODUCED, ALTERED, OR USED BY ANYONE, OR ANY ORGANIZATION, WITHOUT THE EXPRESSED WRITTEN CONSENT OF THE ALABAMA DEPARTMENT OF TRANSPORTATION REPRESENTATIVE AUTHORIZED TO APPROVE THIS USE. ANYONE MAKING UNAUTHORIZED USE OF THIS DRAWING MAY BE PROSECUTED TO THE FULLEST EXTENT OF THE LAW.

REVISIONS	 ALABAMA DEPARTMENT OF TRANSPORTATION 1409 COLISEUM BOULEVARD MONTGOMERY, AL 36130-3050	DESIGN BUREAU SPECIAL DRAWING DETAIL OF CURB INLET TYPE 'PB'
DRAWN BY: _____ DATE DRAWN: _____		

NOT TO SCALE