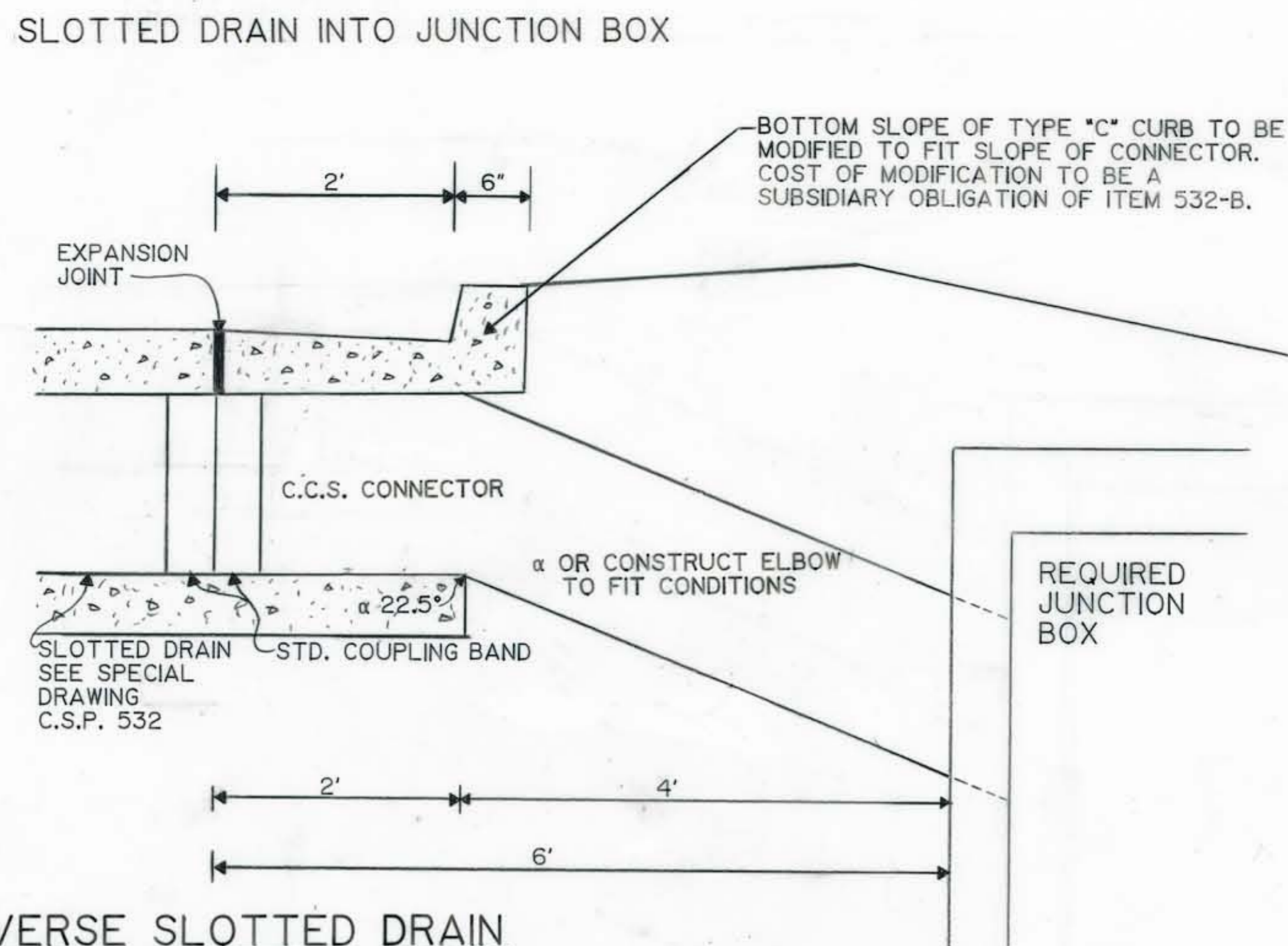
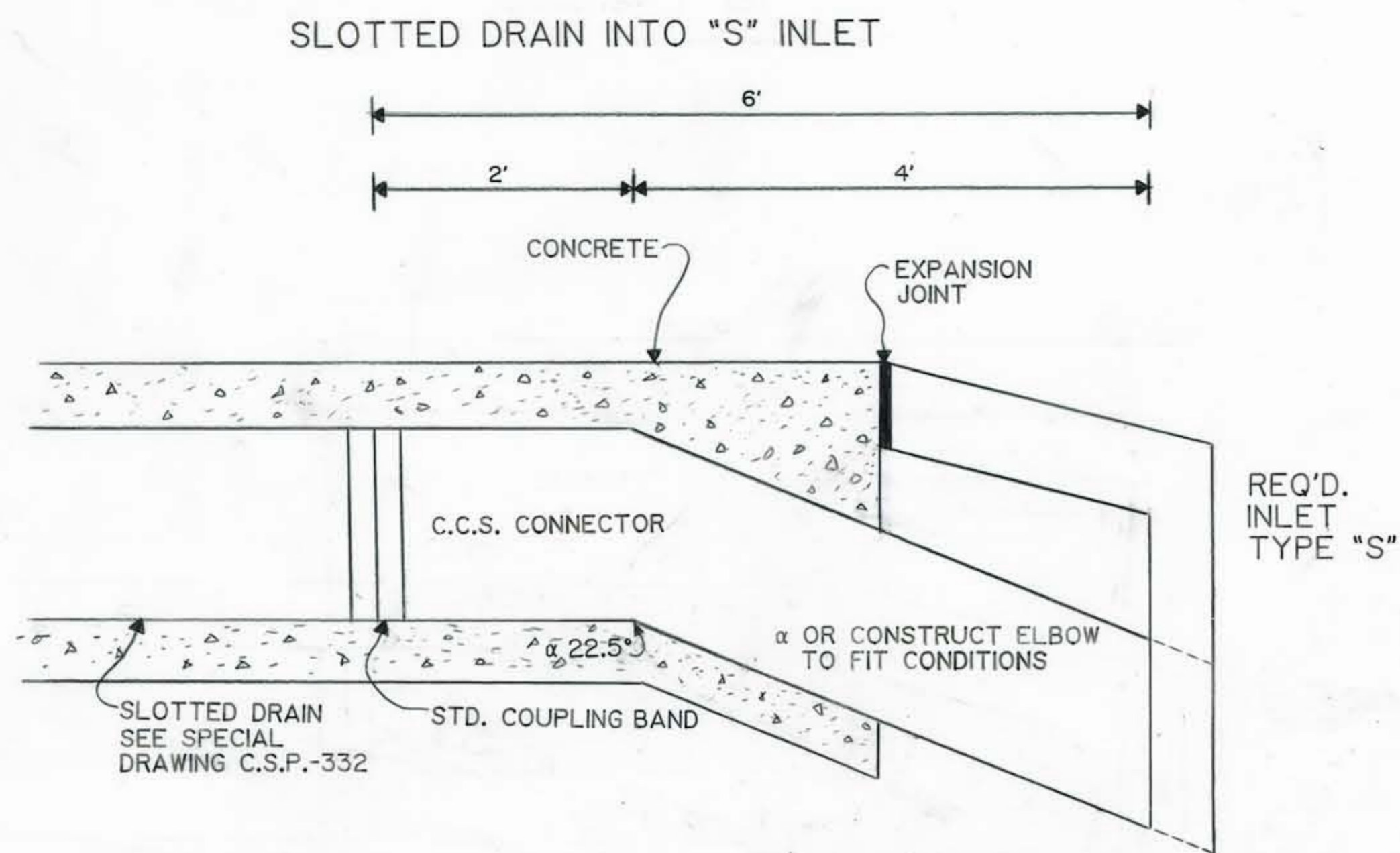
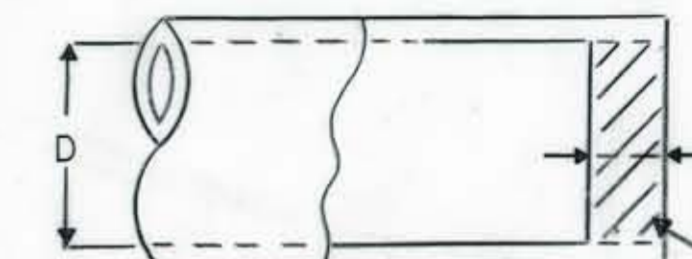


FEDERAL REGION NO.	STATE	PROJECT NUMBER	FISCAL YEAR	SHEET NO.	TOTAL SHEETS
4	ALA.				



DETAIL FOR CONNECTING TRANSVERSE SLOTTED DRAIN TO EXISTING OR REQUIRED STRUCTURES

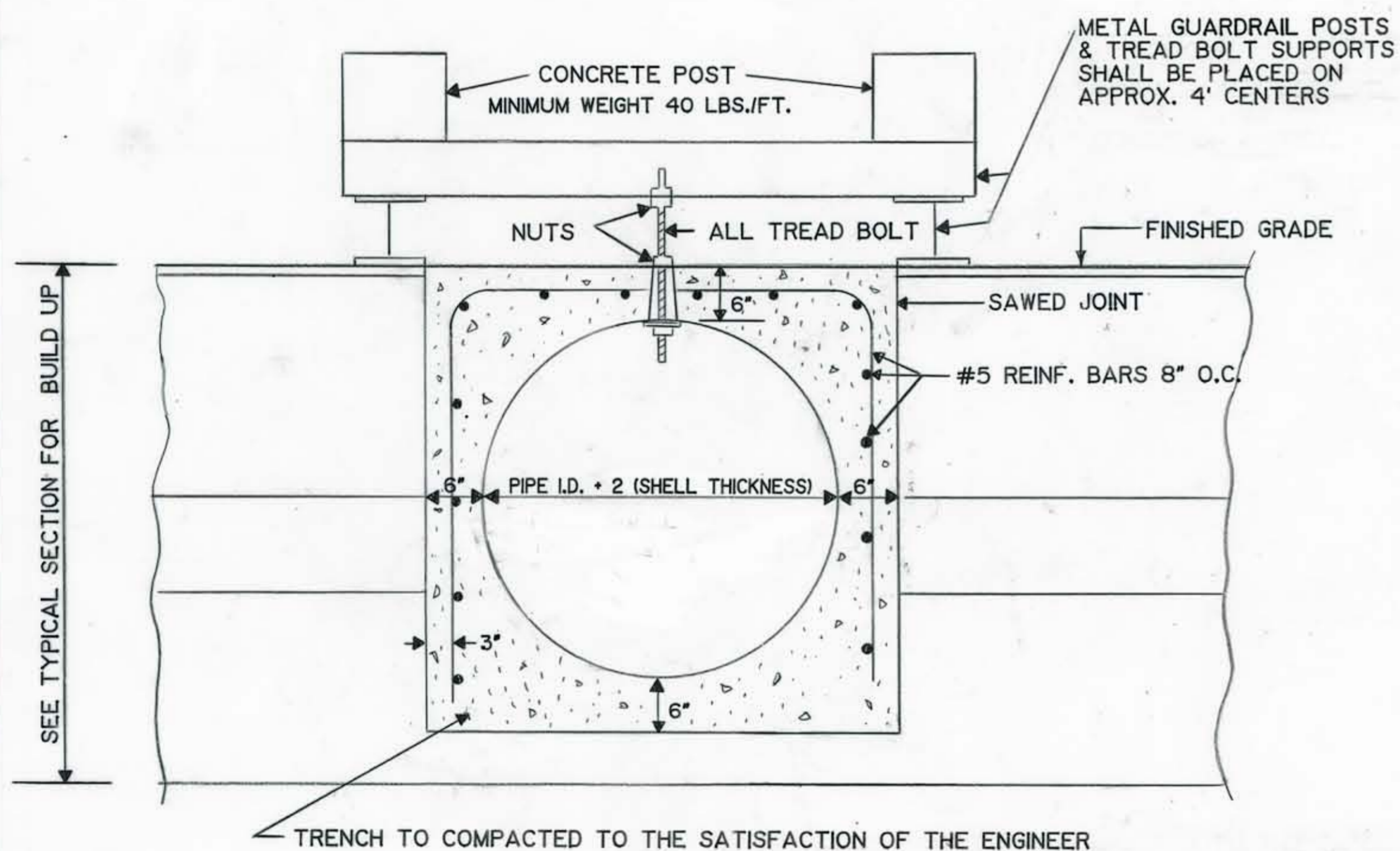
NOTE: CONSTRUCTION PLUGS MAY BE BUILT WITH BRICK MASONRY OR OTHER MATERIAL DEEMED SUITABLE BY THE ENGINEER WITH NO ADJUSTMENT FOR ALTERNATES. THE COST OF PLUGS SHALL BE A SUBSIDIARY OBLIGATION OF ITEM 532-A OR 532-B.



CLASS A, TYPE 2 CONCRETE

D	T (MIN.)
12"	8"
15"	8"
18"	8"
24"	8"
30"	8"
36"	8"
42"	8"
48"	8"
54"	12"
60"	12"
66"	12"

TYPICAL PIPE PLUG DETAIL



DETAIL FOR INSTALLATION OF SLOTTED DRAIN PIPE ACROSS LANES

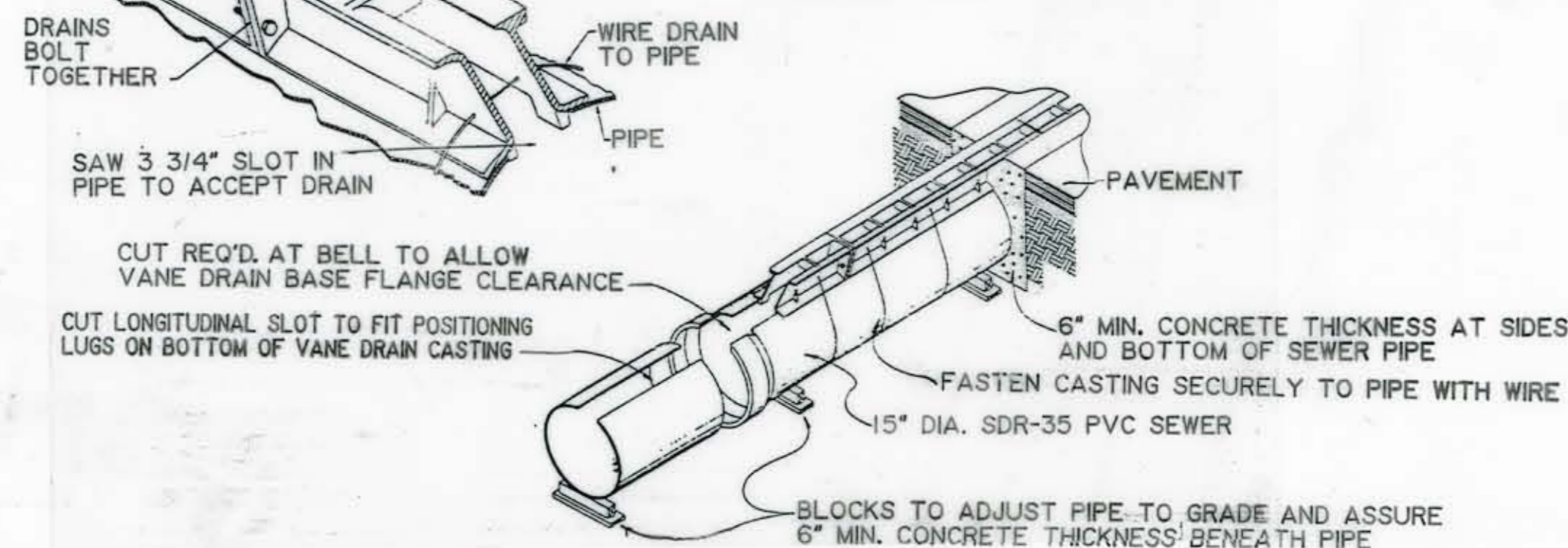
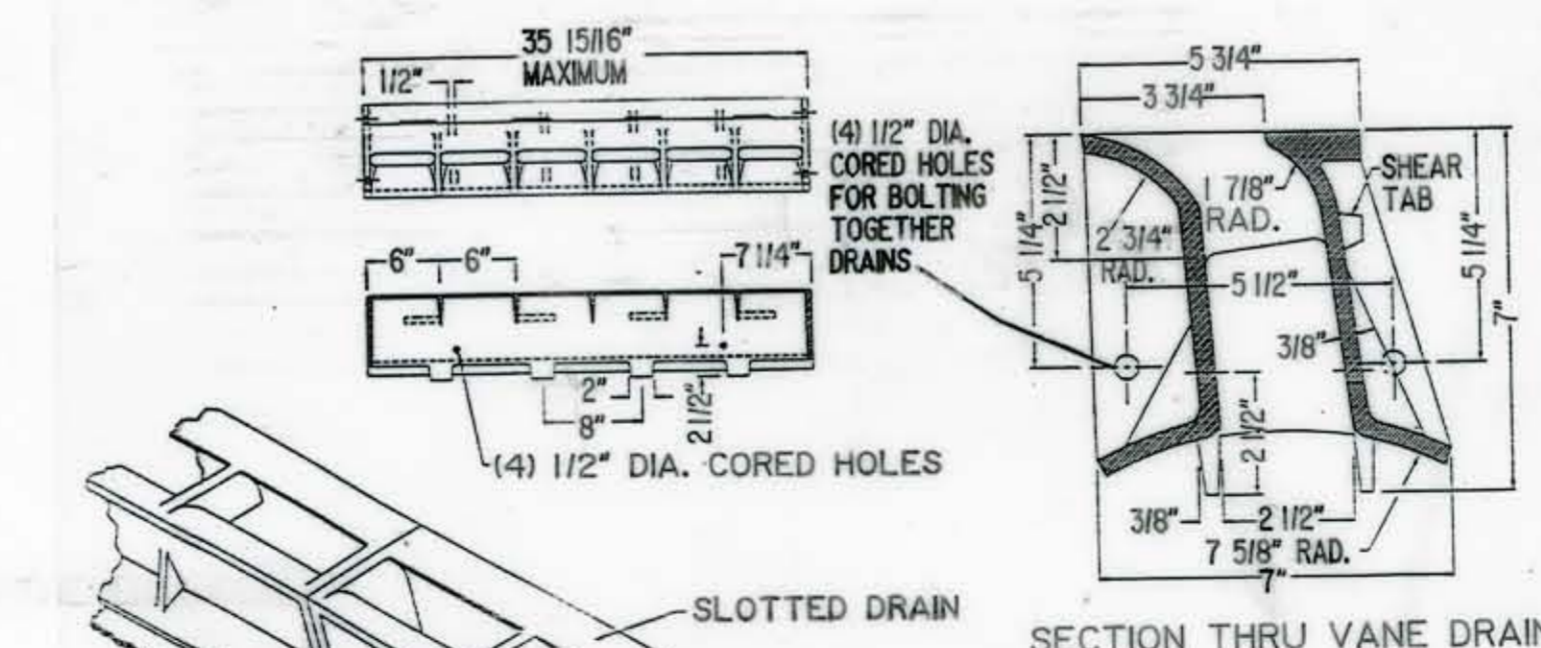
NOTE: SEE SPEC. DWG. NO CSP-532 FOR ADDITIONAL INFORMATION SEE PLAN SHEETS FOR LOCATION OF REQ'D. TRANSVERSE SLOTTED DRAIN PIPE.

REINF. BARS SHALL BE A SUBSIDIARY OBLIGATION TO ITEM NO. 532-A.

ALTERNATE METHODS OF INSURING PROPER GRADE & "HOLD-DOWN" OF SLOTTED DRAIN DURING CONCRETE PLACEMENT MAY BE SUBMITTED FOR CONSIDERATION OF APPROVAL.

NOTE: PAVEMENT TO BE INSTALLED AND THEN THE PAVEMENT TO BE CUT (SAWED JOINT) AND THE SLOTTED DRAIN IS TO BE INSTALLED.

ON LONGITUDINAL SLOPES OF 0% TO 6%, THIS UNIT CAPTURES APPROXIMATELY 0.5 CUBIC FEET PER SECOND, PER LINEAL FOOT.



DETAIL OF SLOTTED VANE DRAIN

NOTES:

- BASIS OF PAYMENT FOR ITEM 523A AND 523B SHALL BE AS OUTLINED IN SPECIAL PROVISION NO. 1094, SECTION 532.05. PAYMENT SHALL ALSO INCLUDE THE COUPLING, C.C.S. PIPE CONNECTOR, CONNECTION TO EXISTING OR REQUIRED STRUCTURES, EXPANSION JOINTS AND CONCRETE ENCASEMENT OF THE CONNECTOR PIPE.
- FILLER AND SEALER FOR EXPANSION JOINTS SHALL BE AS OUTLINED IN ARTICLES 832.01 AND 832.02, ALABAMA HIGHWAY DEPARTMENT SPECIFICATIONS.

SHEET NO. OF REVISIONS		STATE OF ALABAMA HIGHWAY DEPARTMENT			
		PROJECT DETAIL FOR SLOTTED DRAIN CONNECTION TO EXISTING OR REQUIRED STRUCTURES.			
APPROVED:	DESIGNER	SCALE:	DESIGNED:	QUANTITIES	DATE
	ENGINEER		DRAWN:		8-17-92
			TRACED:		
			CHECKED:		