

ALABAMA DEPARTMENT
OF TRANSPORTATION

2016 CRASH FACTS



DRIVE**SAFE**ALABAMA.ORG





LETTER FROM THE

Transportation Director

Providing a safe transportation system is key to the mission of the Alabama Department of Transportation. Analyzing data about crashes is an important part of how ALDOT personnel identify specific opportunities for improving the safety of our transportation system. We then use innovative engineering techniques, perform routine maintenance, and manage funding in a fiscally responsible and priority-based manner to create safer roads.

As you review the data in the 2016 Crash Facts book, I challenge you to consider your personal commitment to safety and the things you can do to help reduce the number of crashes in Alabama. Always follow speed limits; drive sober; buckle up; share the road with motorcycles, bicycles and pedestrians; obey railroad crossing signals; avoid any and all forms of distracted driving; and lead by example by teaching young people safe driving habits.

Wearing a seat belt and making sure that everybody in the vehicle is wearing a seat belt is the single most important safety habit you can adopt. You will see on page 22 of 2016 Crash Facts that **ALMOST 60 PERCENT OF PEOPLE WHO DIED IN CRASHES WERE NOT WEARING A SEAT BELT.** Statistics clearly show seat belts and using proper safety restraints save lives. Violators of Alabama's restraint laws may be fined and assessed points on their driver licenses. Simply put, there are plenty of good reasons to buckle up.

I hope you will look further into 2016 Crash Facts to find even more important insights into making our roads safe.

Drive Safe Alabama!

John R. Cooper

Transportation Director

2016 CRASH FACTS **Table of Contents**

4	Quick Facts
5	Ten-Year Crash Data
6	Fatality Rate Trends
7	Types of Crashes
8	Time Data
10	Involvement by Age and Gender
12	Crash Location
13	IDK Teen Driver Quiz Campaign
14	Crash Environment
15	Holiday Crash Statistics
16	Type of Roadway
17	Alcohol and Drug Involvement
18	Intersection Crashes by County
19	Non-Intersection Crashes by County
20	The Driver
21	Motorcycle Crash Statistics
22	Safety Restraint Usage
24	Bicycle Crash Statistics
25	Pedestrian Crash Statistics
26	Train Involved Crash Statistics
27	Work Zone Crash Statistics
28	Truck Crash Statistics
29	Fatalities by County
30	Traffic Crashes by County
35	Comparative County Statistics
37	Comparative City Statistics
44	Transforming Alabama's Safety Culture
47	Media Contact Information

Data for this report is provided by the Center for
Advanced Public Safety at The University of Alabama.





2016 Crash Data Quick Facts

	2016 CRASH DATA	2016 VS. 2015
All Crashes	155,907	Increased 5.73%
Injuries	47,653	Increased 8.25%
Fatal Crashes	994	Increased 25.98%
Fatalities	1,089	Increased 28.27%
Registered Vehicles in Alabama	5,504,068	Decreased 0.51%
Licensed Drivers in Alabama	3,947,628	Increased 0.89%
Vehicle Miles Traveled in Alabama	69,610,272,000	Increased 1.62%

There were 1,089 people killed in 994 fatal crashes.

A traffic crash was reported every 3 minutes and 22 seconds.

A person was injured in a traffic crash every 11 minutes and 2 seconds.

Speeding is the leading cause of fatal crashes.

For fatal crashes where a restraint was available for use, almost 60 percent of fatalities were unrestrained.

Most Alabama crashes (78 percent) occurred in urban areas, but most fatalities (60 percent) occurred in rural areas.

Of all fatal crashes, 9 percent were caused by drivers 19 or under, and 22 percent were caused by drivers under 25 years of age.

For each fatality, there were over 43 injuries.

Of all fatal crashes, over 50 percent occurred at night (including dusk and dawn).

The pedestrian death toll was 122.

There were 114 fatalities involving motorcycle or moped riders.

Bicyclists accounted for 4 fatalities.

There were 9 fatalities with train involvement.

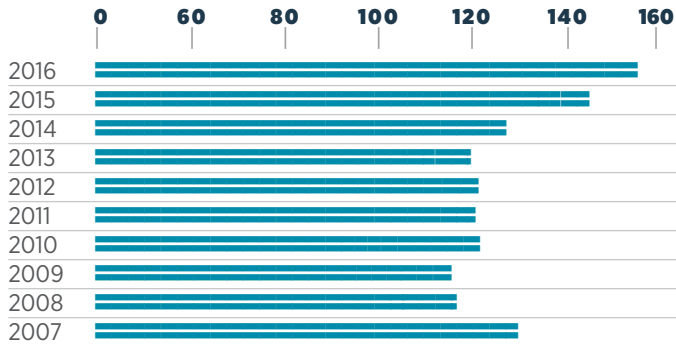
For front seat occupants who are in vehicle crashes, the probability of being killed is 57 times higher for those not wearing safety belts than those who are properly restrained.

Based on 2016 data, typical drivers in Alabama have greater than a **one in three chance of involvement in an injury or fatal crash** operating a vehicle over their lifetimes.

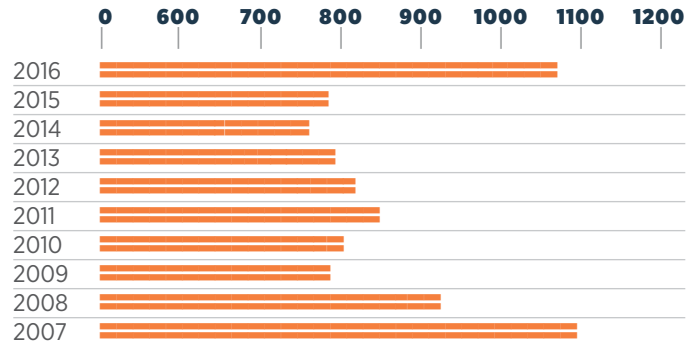
The **probability of individuals being in a crash** of any severity during their lifetimes is **greater than 98%**.

Ten Year CRASH DATA 2007-2016

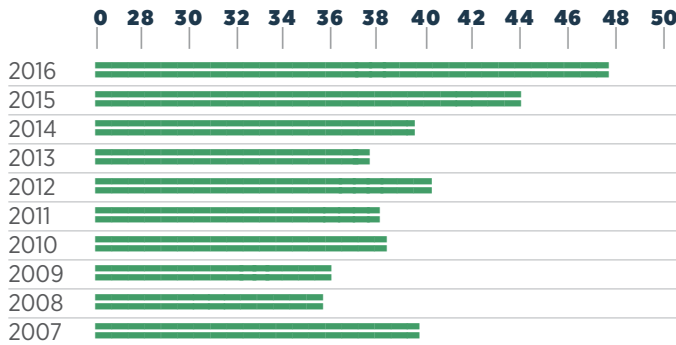
CRASHES UP 15.23% IN THOUSANDS OF CRASHES



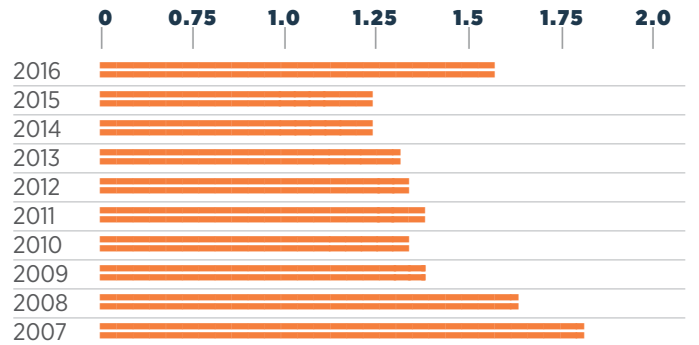
FATALITIES DOWN 1.89% IN NUMBER OF FATALITIES



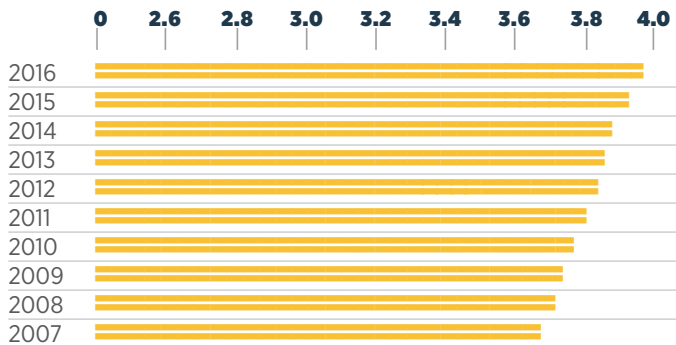
INJURIES UP 20.03% IN THOUSANDS OF INJURIES



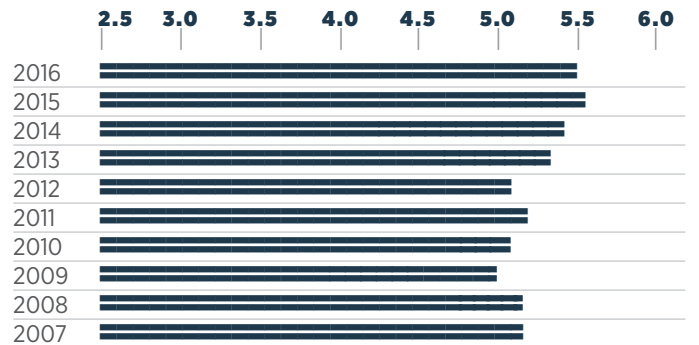
MILEAGE DEATH RATE DOWN 13.81% IN FATALITIES PER 100 MILLION VEHICLE MILES



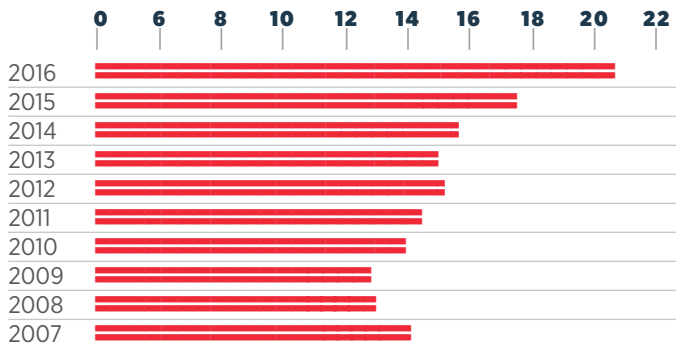
LICENSED DRIVERS UP 6.72% IN MILLIONS OF DRIVERS



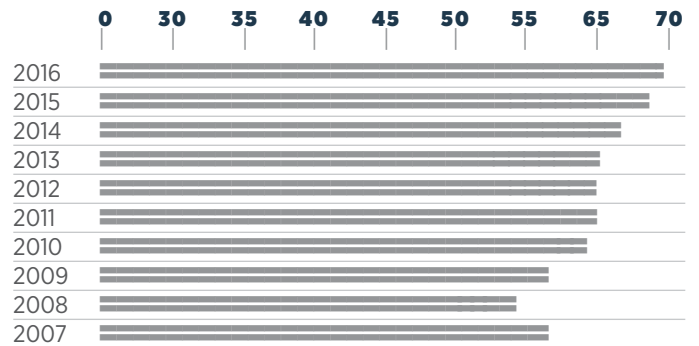
MOTOR VEHICLE REGISTRATIONS UP 6.88% IN MILLIONS OF VEHICLES



ECONOMIC LOSS UP 44.85% IN BILLIONS OF DOLLARS



VEHICLE MILES TRAVELED UP 13.54% IN BILLIONS OF MILES TRAVELED



The increase/decrease percentage of change includes the entire time frame represented.



Fatality Rate TRENDS

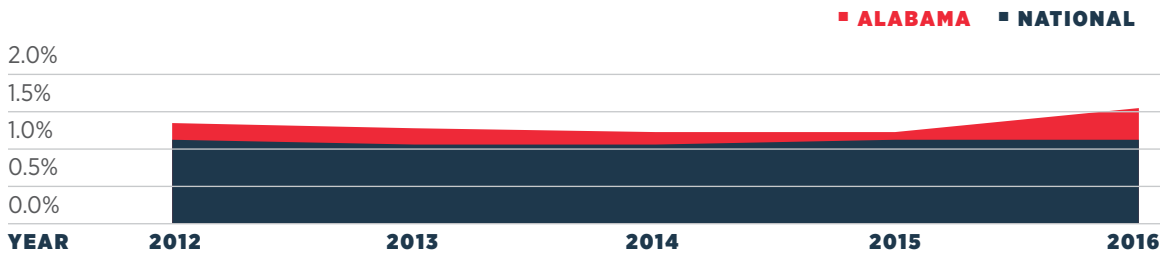
CRASH TOTALS AND RATES FOR THE PAST FIVE YEARS

YEAR	TOTAL CRASHES	TOTAL INJURIES	TOTAL FATALITIES	ALABAMA FATALITY RATE (PER HMVM*)	NATIONAL FATALITY RATE (PER HMVM*)
2012	128,307	40,202	870	1.34	1.14
2013	126,862	37,559	852	1.31	1.10
2014	133,219	39,518	821	1.24	1.08
2015	147,452	44,020	849	1.24	1.13
2016	155,907	47,653	1089	1.56	1.15**

*Hundred Million Vehicle Miles

** NHTSA estimate for the first 9 months of 2016. The official 2016 rate has not yet been released.

FATALITY RATE: STATE VERSUS NATIONAL



Types OF CRASHES

FIRST HARMFUL EVENT (ORDERED BY FATALITIES)

EVENT	TOTAL CRASHES	% OF TOTAL CRASHES	NON-FATAL INJURIES	FATALITIES
Hit Other Vehicle	111,982	71.8%	32,222	456
Hit Fixed Object or Other Object	17,504	11.2%	6,794	349
Hit Pedestrian	641	0.4%	538	67*
Overtaking	1,720	1.1%	1,180	50
Hit Parked Vehicle	7,680	4.9%	375	9
Hit Bicyclist	183	0.1%	150	2
Hit Railway Train	61	0.0%	39	6
Hit Animal	2,665	1.7%	313	3
Other Non-Collision	355	0.2%	98	6
All Other	13,116	8.4%	4,157	141
TOTAL	155,907	100%	45,886	1,089

*Includes only those pedestrian events in the First Harmful Event; for more details, see pedestrian crash statistics on page 25.

VEHICLE TYPE

TYPE	VEHICLES INVOLVED	% OF VEHICLES	0	10%	20%	30%	40%	50%	60%
Passenger Car	152,686	52.7%							
Pick-up and SUV	110,670	38.2%							
Van	11,159	3.9%							
Truck	9,623	3.3%							
Motorcycle/Moped	1,867	0.6%							
Other	3,712	1.3%							
TOTAL	289,717	100%							

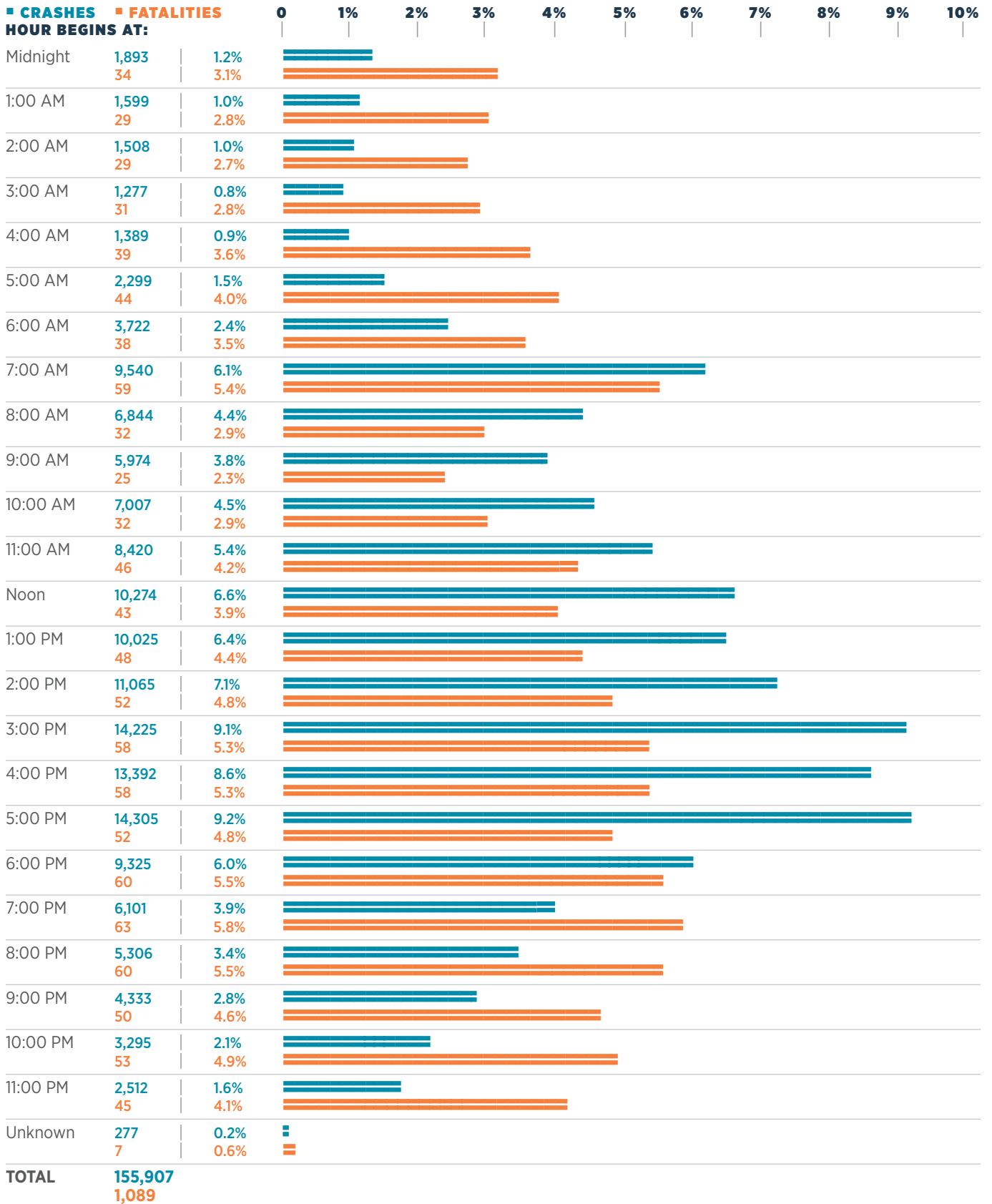
HAZARDOUS CARGO

CARGO TYPE	CRASHES
Gas/Flammable	142 65.7%
Corrosive	42 19.5%
Explosive	8 3.7%
Radioactive	0 0.0%
Other	24 11.1%
TOTAL	216 100%

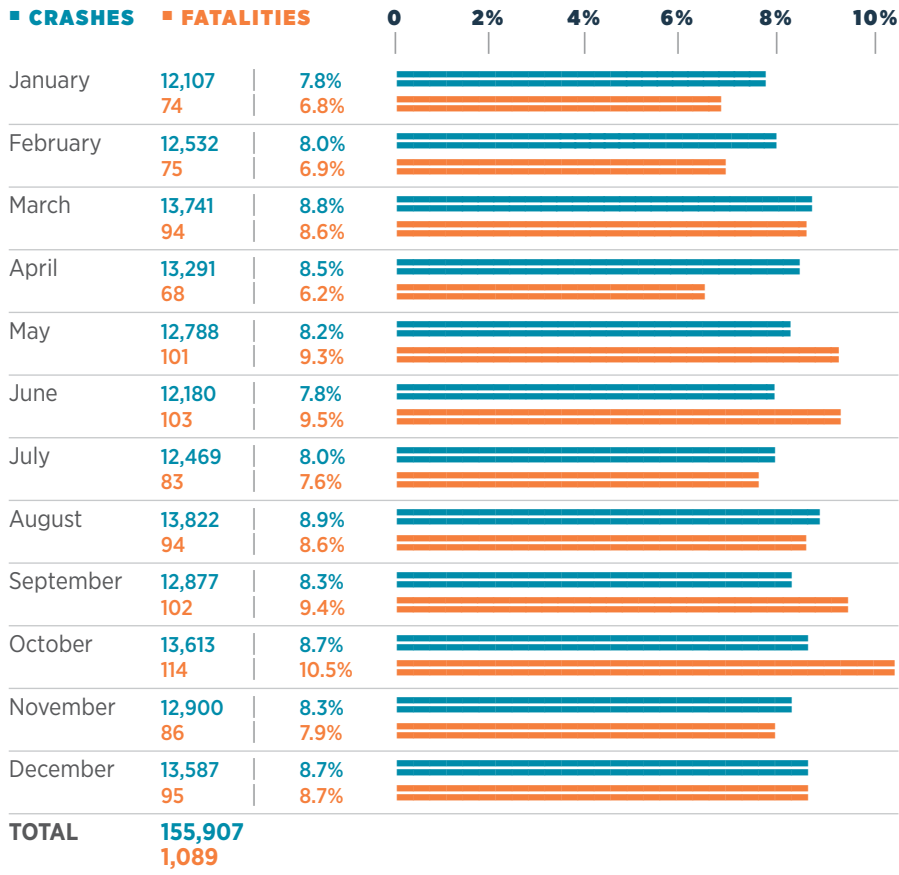


Time DATA

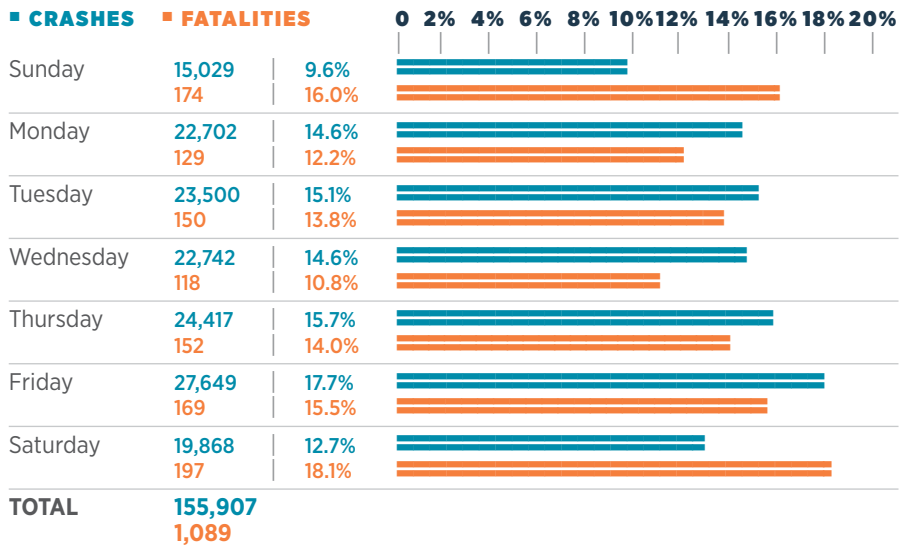
TIME OF DAY



MONTH OF YEAR



DAY OF WEEK



THE MOST
CRASH-PRONE PERIOD
OF THE DAY IS
3pm-6pm.

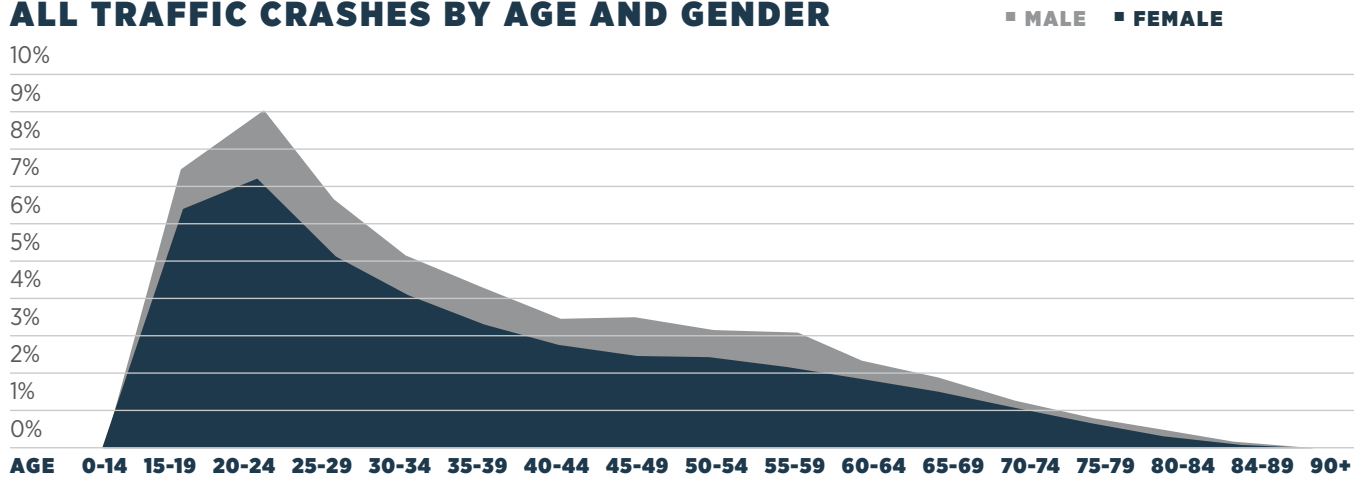
THE MOST
CRASH-PRONE DAY
OF THE WEEK IS
Friday.

MOST CRASHES
WITH FATALITIES
OCCUR ON
Saturday.



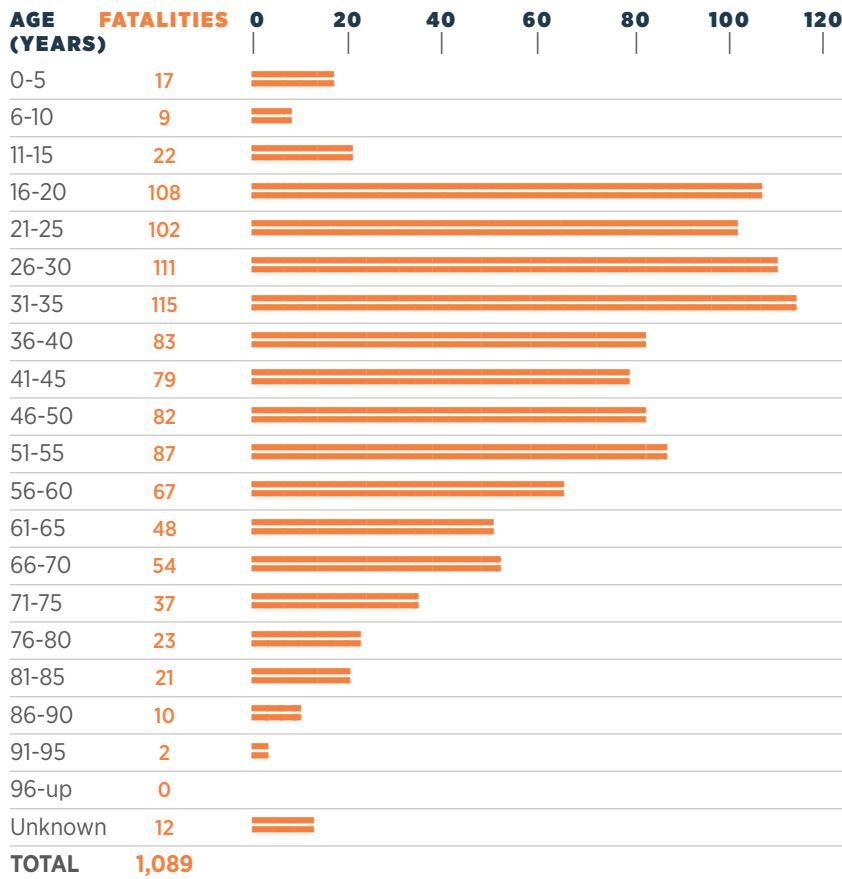
INVOLVEMENT BY Age and Gender

PERCENTAGE CAUSAL DRIVERS* INVOLVED IN ALL TRAFFIC CRASHES BY AGE AND GENDER



*The Causal Driver is the driver of the vehicle that was determined to have caused the traffic crash. Crashes for all vehicle types are included. Each crash has only one causal driver.

FATALITIES BY AGE



DRIVERS INVOLVED* IN ALL CRASHES AND FATAL CRASHES BY AGE

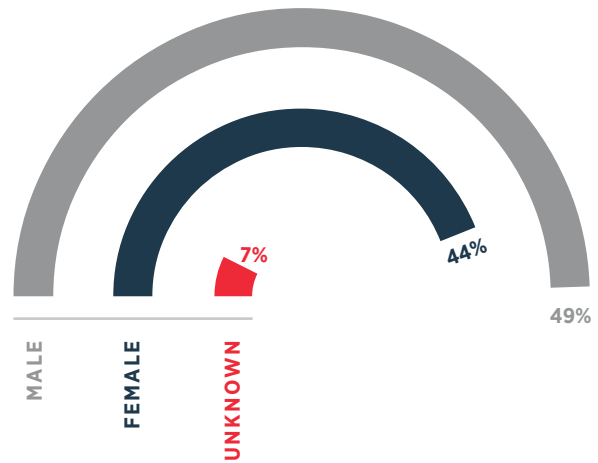
AGE	LICENSED	ALL CRASHES	FATAL CRASHES
<15	83	119	3
15-19	250,301	29,259	120
20-24	327,633	37,869	140
25-29	344,923	31,092	162
30-34	314,454	26,133	164
35-39	304,705	23,268	129
40-44	293,645	20,624	122
45-49	317,944	19,757	129
50-54	330,367	19,300	118
55-59	339,786	17,989	100
60-64	313,427	14,513	73
65-69	275,808	11,485	69
70-74	208,039	7,532	37
>74	353,513	9,420	61
Unknown	0	21,357	35
TOTAL	3,974,628	289,717	1,462

*Involved drivers include both causal and victim drivers.

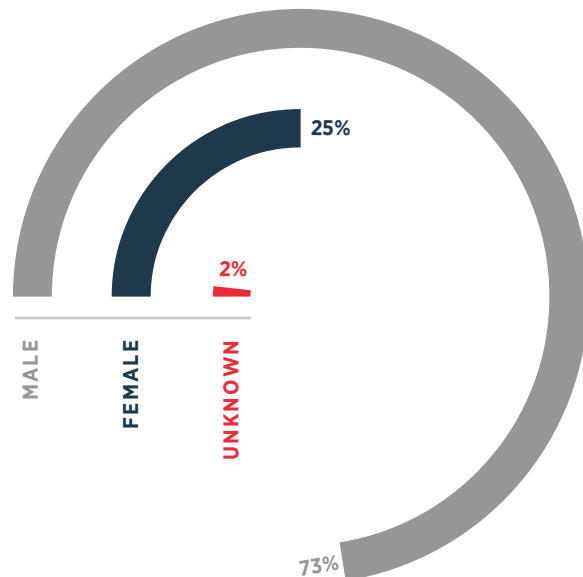
DRIVERS INVOLVED* IN ALL CRASHES AND FATAL CRASHES BY GENDER

GENDER	LICENSED	ALL CRASHES	FATAL CRASHES
Male	1,929,052	142,388	1066
Female	2,045,576	128,019	365
Unknown	0	19,310	31
TOTAL	3,974,628	289,717	1,462

GENDER OF DRIVERS INVOLVED IN ALL CRASHES

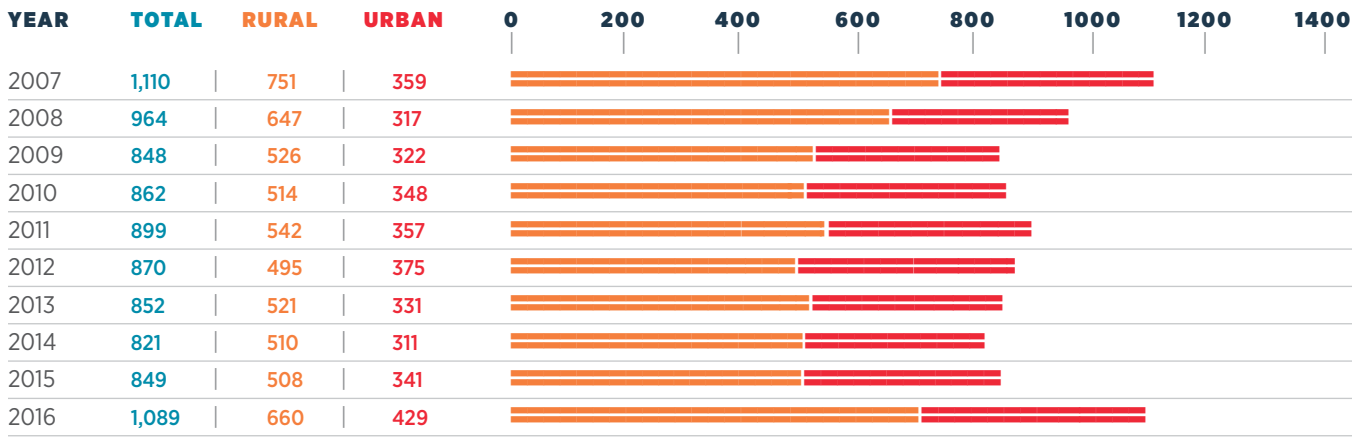


GENDER OF DRIVERS INVOLVED IN FATAL CRASHES



CRASH Location

RURAL VS. URBAN TRAFFIC FATALITIES 10 YEAR DATA



RURAL LOCALE

LOCALE TYPE	CRASHES	
Open Country	28,250	83.60%
Residential	2,997	8.87%
Business	2,153	6.37%
School/Playground	158	0.47%
Industrial	156	0.46%
Other	39	0.12%
Unknown	39	0.12%
TOTAL	33,792	100%

CRASH LOCATION

LOCATION	CRASHES	
On Roadway	123,241	79.05%
Off Roadway	21,224	13.61%
Intersection	2,922	1.87%
Median	1,679	1.08%
Private Property	5	0.00%
Driveway	15	0.01%
Other	6,821	4.38%
TOTAL	155,907	100%

URBAN LOCALE

LOCALE TYPE	CRASHES	
Business	72,176	59.10%
Residential	29,357	24.04%
Open Country	14,054	11.51%
Industrial	2,342	1.92%
School/Playground	2,638	2.16%
Other	1,528	1.25%
Unknown	20	0.02%
TOTAL	122,115	100%

CAUSAL DRIVER'S RESIDENCE

RESIDENCE WITHIN 25 MILES	
Yes	68.68%
No	18.32%
Unknown	13.00%

**MOST CRASHES OCCUR
within 25
miles of home.**

The number of **RURAL fatalities increased 29.92%** from 2015 to 2016 and **decreased 12.12%** from 2007 to 2016.

The number of **URBAN fatalities increased 25.81%** from 2015 to 2016 and **increased 19.50%** from 2007 to 2016.

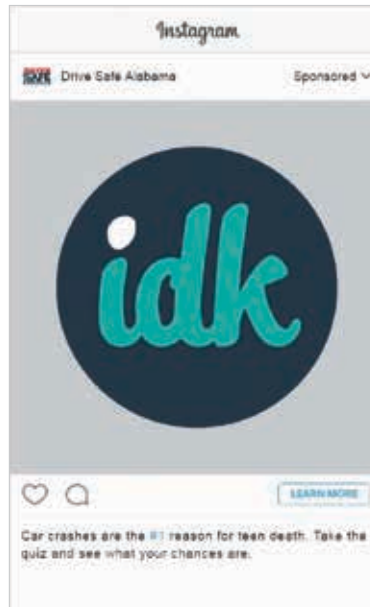
IDK TEEN DRIVER QUIZ Campaign

To reach a tech-savvy teen audience, the Alabama Department of Transportation developed a teen-focused educational quiz that was served to the 15-19 year-old demographic through animated Instagram and Facebook ads.

The goal of the initiative was to increase awareness of safe driving habits among teens and encourage engagement with the Drive Safe Alabama website by leveraging the appeal of a quiz game through social media.

A custom theme and logo/brand was developed to appeal to the target audience. The objective was to influence better behavior behind the wheel by engaging as many teens as possible with clever copy and graphics to take the quiz and learn about safe driving habits.

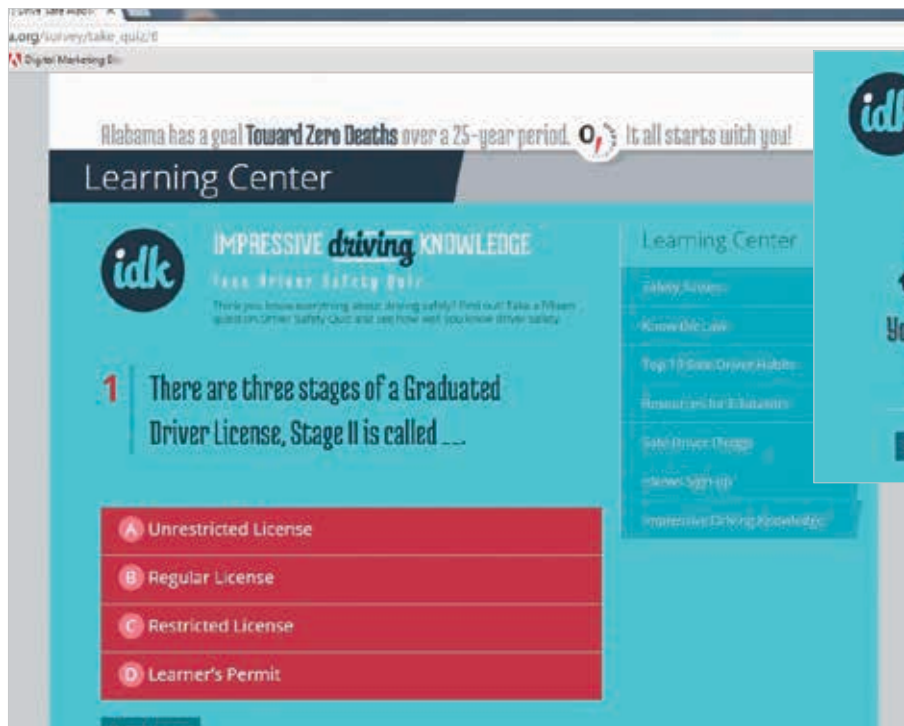
Over 1,900 participants completed the quiz in the five week campaign push, with a 1.62% click through rate (higher than the industry average).



Instagram Ad
IDK Teen Driver Campaign



Facebook Ad
IDK Teen Driver Campaign



DriveSafeAlabama.org Quiz
IDK Teen Driver Campaign

CRASH Environment

TRAFFIC CONTROL

CONTROL TYPE	CRASHES		FATALITIES	
No Control Present	75,646	48.52%	564	51.79%
No Passing Zone	11,972	7.68%	300	27.55%
Stop Sign	13,421	8.61%	87	7.99%
Traffic Signal	35,700	22.90%	55	5.05%
Railroad Device	160	0.10%	7	0.64%
Yield Sign	3,452	2.21%	1	0.09%
Other	3,647	2.34%	54	4.96%
Not Stated	11,909	7.64%	21	1.93%
TOTAL	155,907	100%	1,089	100%

LIGHT CONDITION

CONDITION	CRASHES		FATALITIES	
Day	112,813	72.36%	541	49.68%
Dark	14,492	9.30%	343	31.50%
Streetlights	20,991	13.46%	160	14.69%
Dusk	4,339	2.78%	21	1.93%
Dawn	1,797	1.15%	18	1.65%
Other/Unknown	1,475	0.95%	6	0.55%
TOTAL	155,907	100%	1,089	100%

ROAD CURVATURE AND GRADE

CURVE/GRADE	CRASHES		FATALITIES	
Level	103,134	66.15%	511	46.92%
Curve on Hill	8,215	5.27%	176	16.16%
Downgrade	13,476	8.64%	125	11.48%
Level Curve	7,545	4.84%	130	11.94%
Upgrade	10,538	6.76%	93	8.54%
Hillcrest or Sag	1,402	0.90%	36	3.31%
Other/Unknown	11,597	7.44%	18	1.65%
TOTAL	155,907	100%	1,089	100%

NUMBER OF LANES

LANES	CRASHES		FATALITIES	
Two	67,740	43.45%	684	62.81%
Four	45,509	29.19%	278	25.53%
Six or more	15,130	9.70%	74	6.80%
Five	5,113	3.28%	19	1.74%
Three	7,226	4.63%	12	1.10%
One	3,025	1.94%	1	0.09%
Not Stated	12,164	7.80%	21	1.93%
TOTAL	155,907	100%	1,089	100%

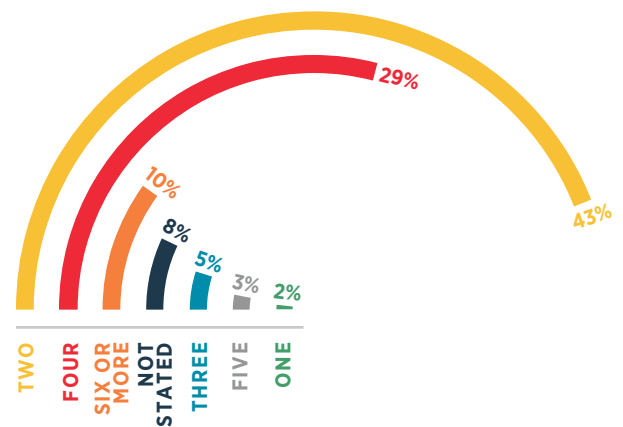
ROAD CONDITION

CONDITION	CRASHES		FATALITIES	
Dry	122,755	78.74%	957	87.88%
Wet	21,277	13.65%	110	10.10%
Icy/Slushy	174	0.11%	1	0.09%
Muddy	65	0.04%	0	0.00%
Other/Unknown	11,636	7.46%	21	1.93%
TOTAL	155,907	100%	1,089	100%

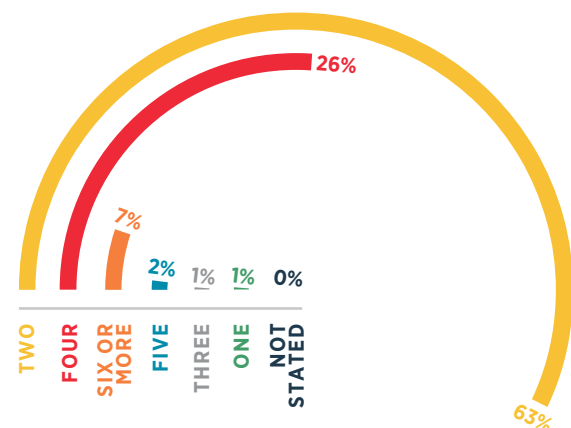
WEATHER

CONDITION	CRASHES		FATALITIES	
Clear	111,725	71.66%	817	75.02%
Cloudy	26,325	16.89%	186	17.08%
Rain	16,454	10.55%	74	6.80%
Snow/Sleet	258	0.17%	1	0.09%
Fog	589	0.38%	8	0.73%
Other	556	0.36%	3	0.28%
TOTAL	155,907	100%	1,089	100%

CRASHES PER NUMBER OF LANES



FATALITIES PER NUMBER OF LANES



Holiday CRASH STATISTICS

2015 VS. 2016

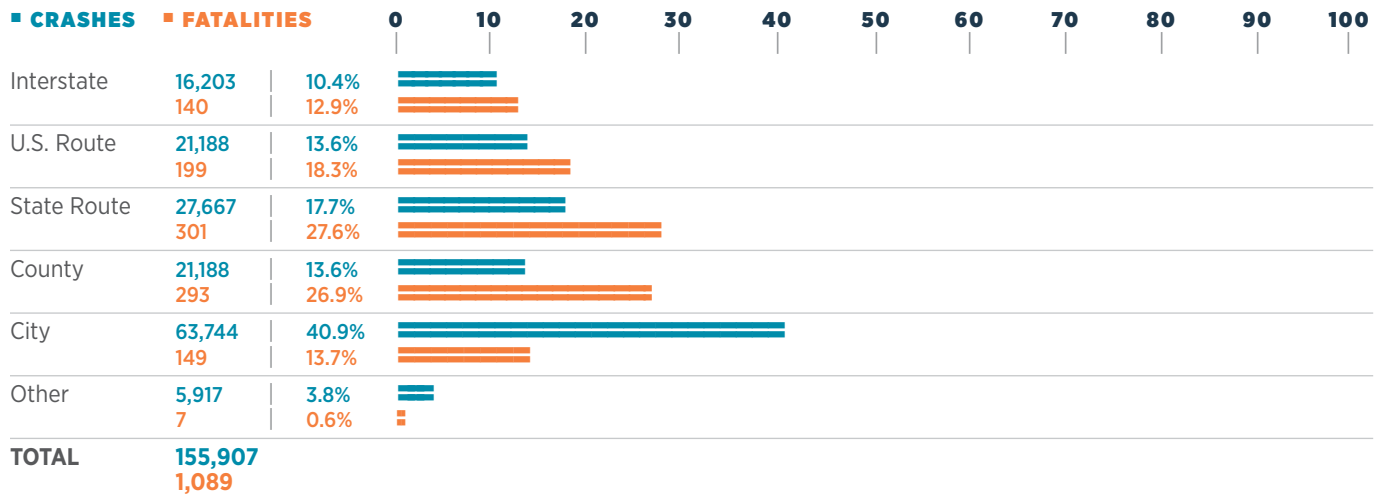
HOLIDAY	YEAR	FATALITIES	PERIOD	0	2	4	6	8	10	12	14	16	18
New Year	2015	8	6 pm, Tues., December 30, 2014 until 11:59 pm, Sun., January 3, 2015 (84 hrs)										
	2016	12	6 pm, Fri., December 30, 2015 until 11:59 pm, Sat., January 2, 2016 (78 hrs)										
Memorial Day	2015	8	6 pm, Fri., May 22, 2015 until 11:59 pm, Mon., May 25, 2015 (78 hrs)										
	2016	10	6 pm, Fri., May 27, 2016 until 11:59 pm, Mon., May 30, 2016 (78 hrs)										
July 4th	2015	6	6 pm, Fri., July 3, 2015 until 11:59 pm, Sun., July 5, 2015 (54 hrs)										
	2016	13	6 pm, Fri., July 1, 2016 until 11:59 pm, Mon., July 4, 2016 (78 hrs)										
Labor Day	2015	10	6 pm, Fri., September 4, 2015 until 11:59 pm, Mon., September 7, 2015 (78 hrs)										
	2016	7	6 pm, Fri., September 2, 2016 until 11:59 pm, Mon., September 5, 2016 (78 hrs)										
Thanksgiving	2015	9	6 pm, Wed., November 25, 2015 until 11:59 pm, Sun., November 29, 2015 (102 hrs)										
	2016	17	6 pm, Wed., November 23, 2016 until 11:59 pm, Sun., November 27, 2016 (102 hrs)										
Christmas	2015	10	6 pm, Thur., December 24, 2015 until 11:59 pm, Sun., December 27, 2015 (84 hrs)										
	2016	14	6 pm, Fri., December 23, 2016 until 11:59 pm, Mon., December 26, 2016 (78 hrs)										

**Note that the hours for each holiday period may vary from one year to the other. See table above for hours for each holiday period.*

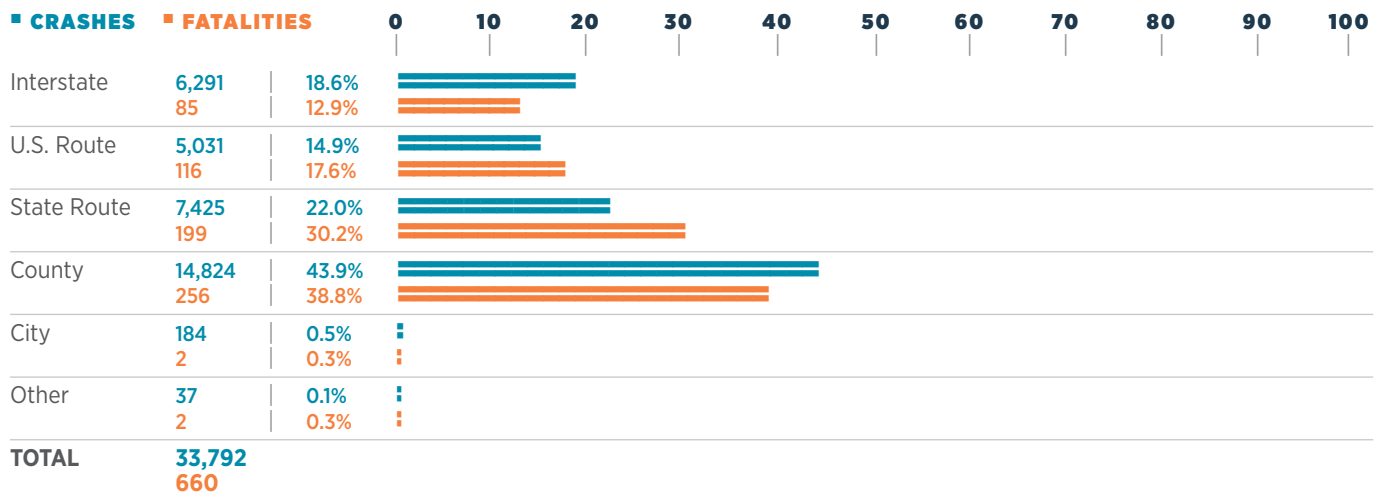


TYPE OF Roadway

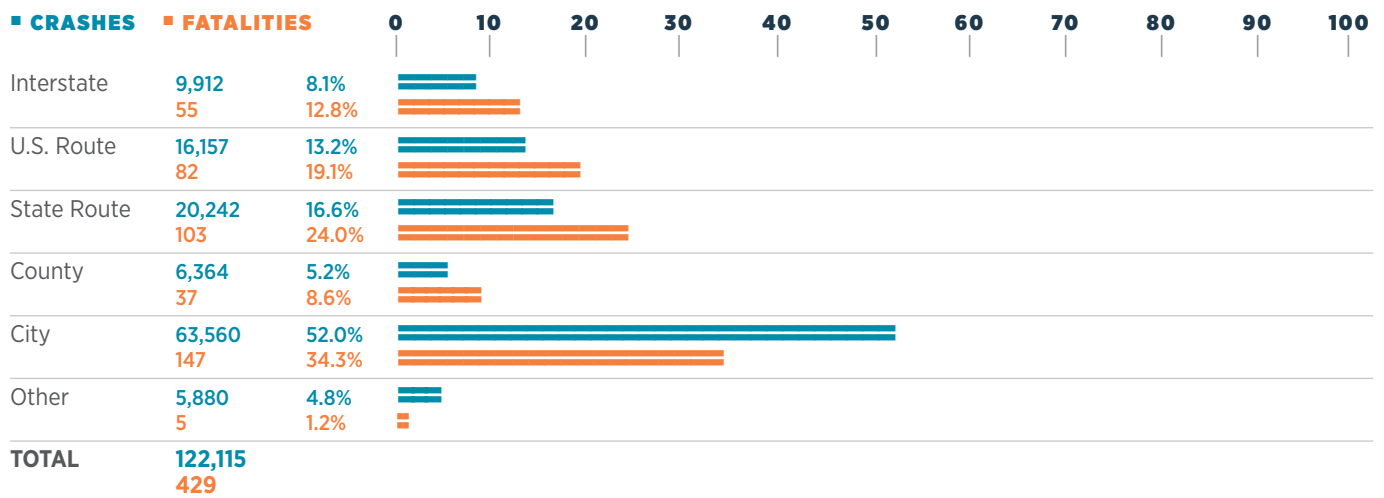
TOTAL FOR STATE



RURAL AREAS



URBAN AREAS



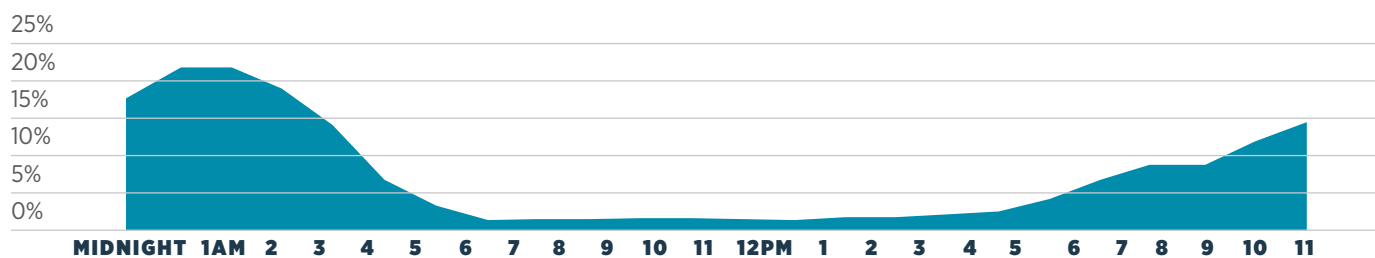
Alcohol and Drug INVOLVEMENT

CITED DRIVERS INFLUENCED BY ALCOHOL OR DRUGS

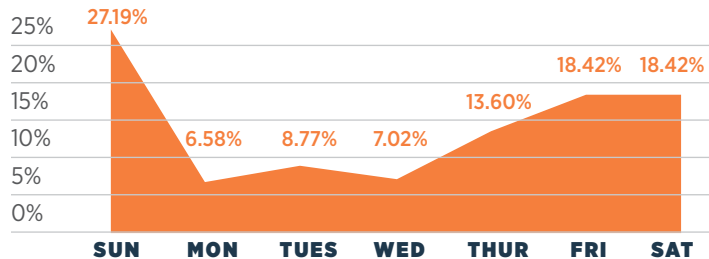
AGE	ALL*	MALE	FEMALE	UNKNOWN	0	100	200	300	400	500	600	700	800	900
0-14	1	1	0	0	0	0	0	0	0	0	0	0	0	0
15-19	273	217	56	0	0	100	200	300	400	500	600	700	800	900
20-24	890	701	187	2	0	100	200	300	400	500	600	700	800	900
25-29	976	721	253	2	0	100	200	300	400	500	600	700	800	900
30-34	820	593	223	4	0	100	200	300	400	500	600	700	800	900
35-39	664	479	185	0	0	100	200	300	400	500	600	700	800	900
40-44	500	348	151	1	0	100	200	300	400	500	600	700	800	900
45-49	502	366	135	1	0	100	200	300	400	500	600	700	800	900
50-54	461	323	138	0	0	100	200	300	400	500	600	700	800	900
55-59	362	274	88	0	0	100	200	300	400	500	600	700	800	900
60-64	217	161	56	0	0	100	200	300	400	500	600	700	800	900
65-69	123	96	27	0	0	100	200	300	400	500	600	700	800	900
70-74	37	31	6	0	0	100	200	300	400	500	600	700	800	900
75-over	24	14	10	0	0	100	200	300	400	500	600	700	800	900
Unknown	139	51	4	84	0	100	200	300	400	500	600	700	800	900
TOTAL	5,989	4,376	1,519	94										

*All crash causal drivers who were cited for DUI.

DUI CRASHES BY TIME



DUI CRASHES BY DAY

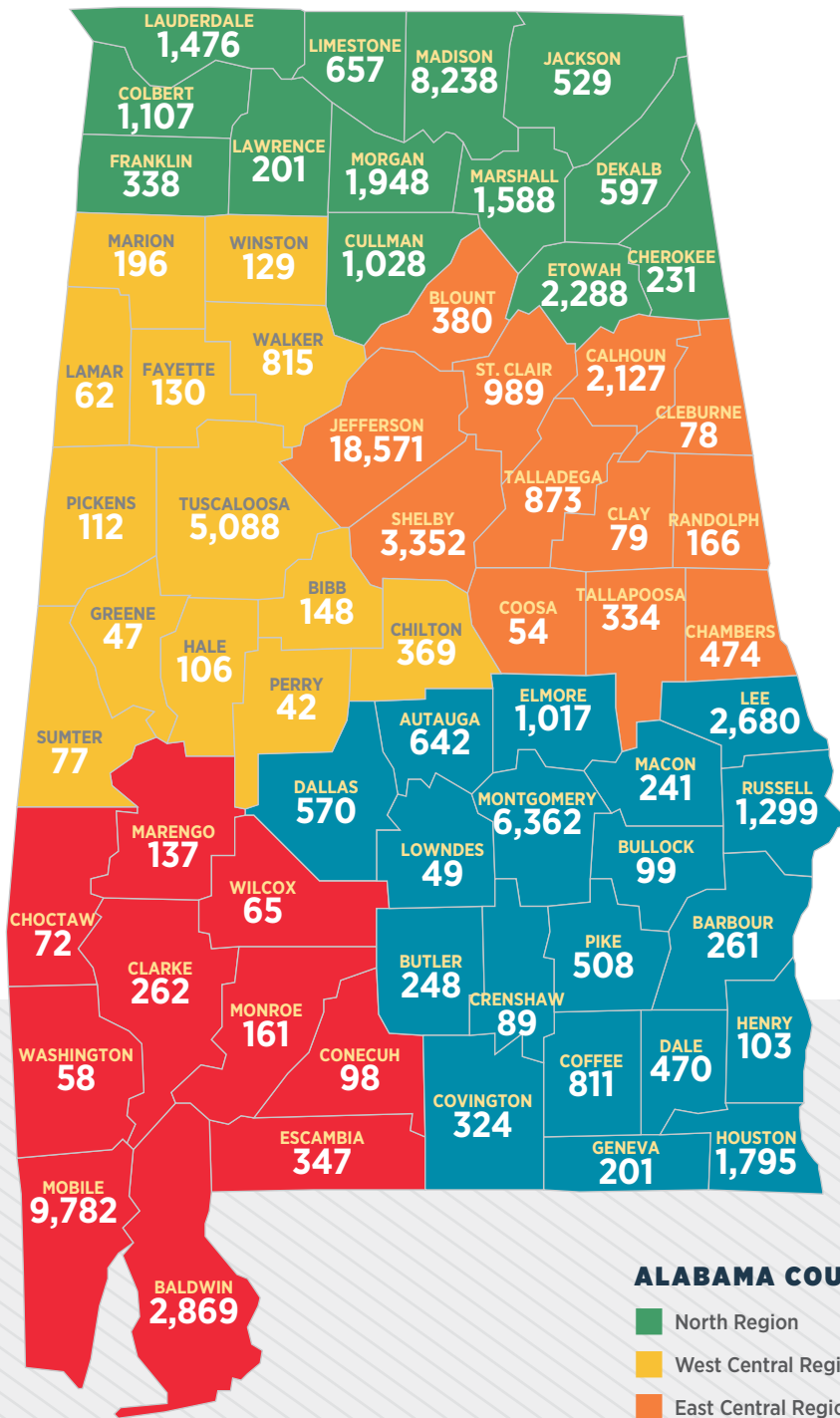


On average, **less than 1 percent of crashes end in a fatality**. However, for DUI crashes, the probability is much greater. The proportion of **fatality crashes involving DUI** (3.85 percent) is **7.6 times that of crashes in general** (0.51 percent), as reported in 2016.



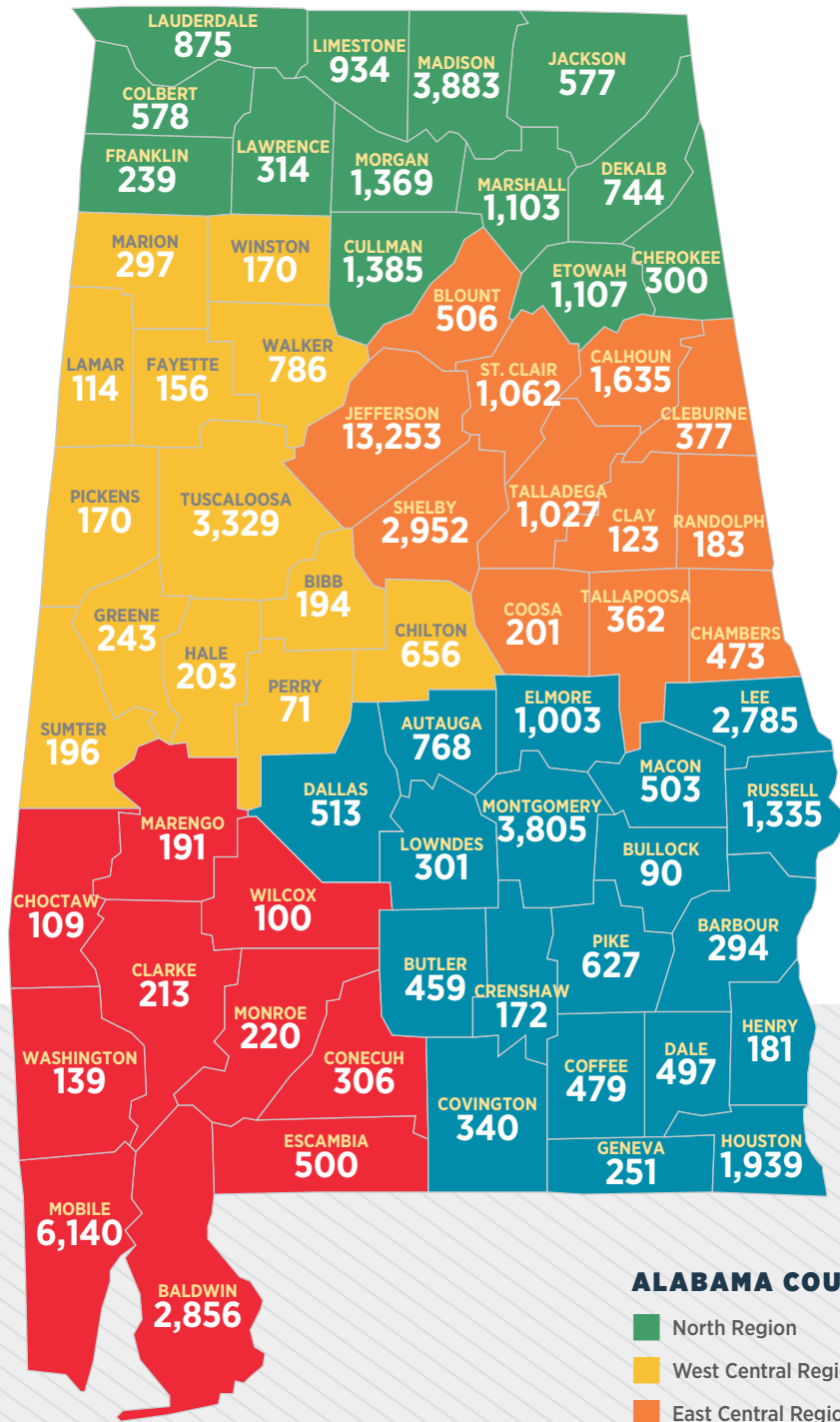
Intersection CRASHES BY COUNTY

TOTAL INTERSECTION-RELATED CRASHES 86,644



Non-Intersection CRASHES BY COUNTY

TOTAL NON-INTERSECTION-RELATED CRASHES **69,263**



ALABAMA COUNTY REGION KEY

- North Region
- West Central Region
- East Central Region
- Southeast Region
- Southwest Region



DRIVER CONTRIBUTING CIRCUMSTANCES WITH PERCENTAGE OF FATAL CRASHES TO ALL CRASHES

CIRCUMSTANCE	ALL CRASHES	FATAL CRASHES	0	0.5%	1%	1.5%	2%	2.5%	3%	3.5%	4%	4.5%	5%
Speeding	7,229	153											
Driving Under the Influence	4,368	123											
Failed to Yield Right of Way	23,329	80											
Ran off Road	3,412	84											
Improper Lane Change/Use	11,975	58											
Wrong Side of Road	785	32											
Unseen Object/Person/Vehicle	10,698	40											
Fatigued/Asleep	2,681	36											
Failure to Heed Sign/Signal/Officer	5,815	42											
Swerved to Avoid Vehicle/Object	7,310	44											
Misjudged Stopping Distance	14,578	3											
Tailgating	22,756	8											
Driver Not in Control	309	3											
All Other	40,662	288											
TOTAL	155,907	994											

There may be multiple contributing circumstances in each crash. The table above shows the primary cause determined by the officer reporting the crash.

Motorcycle CRASH STATISTICS

TEN YEAR DATA

YEAR	MOTORCYCLISTS INVOLVED	INJURIES	FATALITIES	0	500	1,000	1,500	2,000	2,500
2007	2,032	1,426	84						
2008	2,106	1,495	98						
2009	1,647	1,205	77						
2010	1,729	1,319	86						
2011	1,925	1,438	97						
2012	1,912	1,477	92						
2013	1,583	1,173	76						
2014	1,650	1,251	64						
2015	1,601	1,254	74						
2016	1,828	1,297	114						

MOTORCYCLE CAUSED CRASHES BY DRIVER AGE INCLUDES MOTOR SCOOTERS AND MOPEDS

AGE	CRASHES	INJURIES	FATALITIES
0-14	10	4	0
15-19	121	50	3
20-24	224	129	11
25-29	173	111	10
30-34	154	92	14
35-39	107	66	8
40-44	112	84	8
45-49	135	103	8
50-54	151	92	4
55-59	116	82	4
60-64	95	58	2
65-69	58	28	2
70-74	38	19	0
75-over	31	11	1
Unknown	64	5	0
TOTAL	1,589	934	75

The numbers above will be different from the previous table because this table reflects crashes CAUSED by motorcycles, not all crashes involving motorcycles.



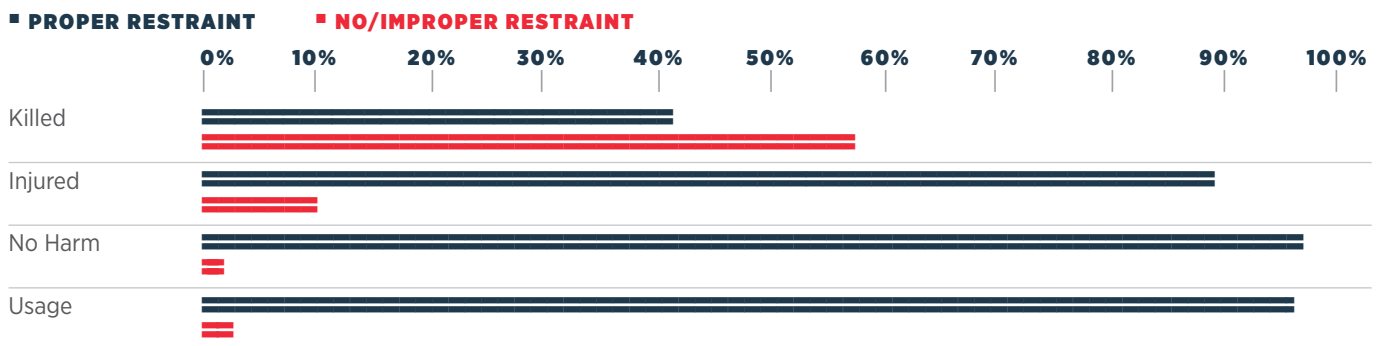
Safety Restraint USAGE

SAFETY RESTRAINT USAGE

RESTRAINT USED	SEVERITY	DRIVER		FRONT SEAT PASSENGER		BACK SEAT PASSENGER		TOTALS	
Wearing Lap and Shoulder Belts	KILLED	234	0.10%	49	0.11%	42	0.24%	325	0.11%
	INJURED	27,150	11.34%	6,352	14.72%	1,960	11.19%	35,462	11.81%
	NO HARM	212,136	88.57%	36,752	85.17%	15,519	88.57%	264,407	88.08%
	SUBTOTAL	239,520	100%	43,153	100%	17,521	100%	300,194	100%
Wearing Lap Belt Only	KILLED	5	0.68%	1	0.00%	1	0.14%	7	0.40%
	INJURED	78	10.68%	47	16.67%	116	15.83%	241	13.73%
	NO HARM	647	88.63%	244	83.33%	616	84.04%	1,507	85.87%
	SUBTOTAL	730	100%	292	100%	733	100%	1,755	100%
Wearing Shoulder Belt Only	KILLED	4	0.56%	1	0.87%	0	0.00%	5	0.55%
	INJURED	75	10.47%	21	18.26%	10	12.66%	106	11.65%
	NO HARM	637	88.97%	93	80.87%	69	87.34%	799	87.80%
	SUBTOTAL	716	100%	115	100%	79	100%	910	100%
None Used	KILLED	327	6.02%	72	5.35%	42	3.61%	441	5.55%
	INJURED	2,684	49.41%	742	55.17%	481	41.39%	3,907	49.21%
	NO HARM	2,421	44.57%	531	39.48%	639	54.99%	3,591	45.23%
	SUBTOTAL	5,432	100%	1,345	100%	1,162	100%	7,939	100%
Unknown	KILLED	40	0.40%	15	1.12%	4	0.56%	59	0.49%
	INJURED	1,591	15.86%	367	27.45%	192	26.74%	2,150	17.78%
	NO HARM	8,403	83.75%	955	71.43%	522	72.70%	9,880	81.73%
	SUBTOTAL	10,034	100%	1,337	100%	718	100%	12,089	100%

*Seat belt use for non-fatal injured passengers may be over-estimated because reporting officers have no way to make a direct observation. Additionally, 59 fatalities had unknown restraint use.

PERCENTAGE OF OCCUPANTS INVOLVED IN CRASHES



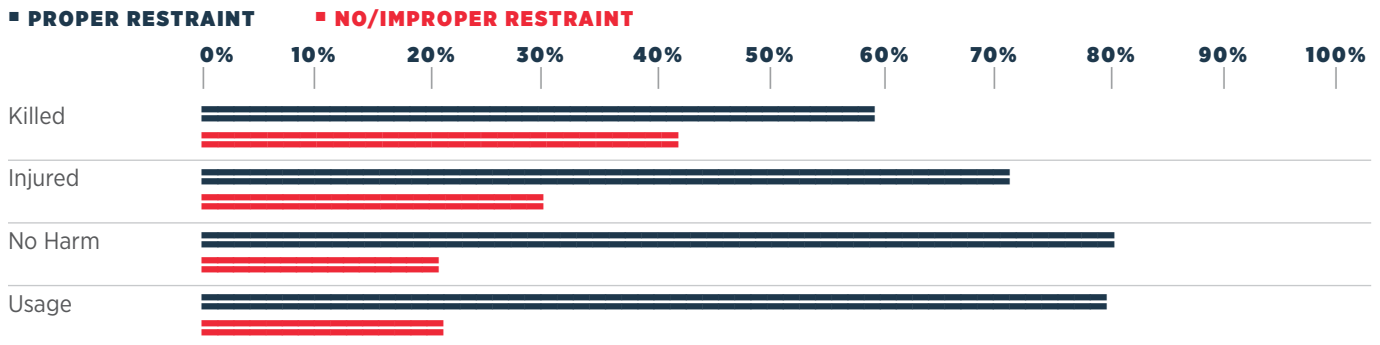
According to the crash reports, overall only **3.4 percent** of people involved in crashes were not using safety restraints; however **almost 60 percent** of all fatalities were not restrained.

In contrast, **97.8 percent** of people involved in crashes but not harmed were reported to have been wearing their seat belts.

CHILD RESTRAINT USAGE (UNDER 6 YEARS OLD)

RESTRAINT USED	SEVERITY	FRONT SEAT PASSENGER		BACK SEAT PASSENGER		TOTALS	
		Count	Percentage	Count	Percentage	Count	Percentage
Child Restraint Used	KILLED	0	0.00%	7	0.08%	7	0.08%
	INJURED	22	9.13%	692	7.62%	714	7.65%
	NO HARM	219	90.87%	8,384	92.30%	8,603	92.27%
	SUBTOTAL	241	100%	9,083	100%	9,324	100%
Child Restraint Used Improperly	KILLED	0	0.00%	2	0.10%	2	0.09%
	INJURED	36	15.19%	203	9.97%	239	10.51%
	NO HARM	201	84.81%	1,831	89.93%	2,032	89.40%
	SUBTOTAL	237	100%	2,036	100%	2,273	100%
None Used	KILLED	1	3.33%	2	1.41%	3	1.74%
	INJURED	11	36.67%	52	36.62%	63	36.63%
	NO HARM	18	60.00%	88	61.97%	106	61.63%
	SUBTOTAL	30	100%	142	100%	172	100%
Unknown	KILLED	0	0.00%	0	0.00%	0	0.00%
	INJURED	5	25.00%	45	20.09%	50	20.49%
	NO HARM	15	75.00%	179	79.91%	194	79.51%
	SUBTOTAL	20	100%	224	100%	244	100%

PERCENTAGE OF CHILD PASSENGERS INVOLVED IN CRASHES



According to the crash reports, overall, about **21 percent of children involved in crashes were not in a child restraint.**

About **80 percent of children involved in crashes but not harmed** were reported to have been **protected by child restraints.**



Bicycle CRASH STATISTICS

TEN YEAR DATA

YEAR	BICYCLISTS	INJURIES	FATALITIES
2007	266	193	9
2008	236	182	4
2009	208	167	6
2010	232	169	5
2011	280	203	5
2012	278	225	9
2013	264	192	6
2014	203	195	8
2015	260	185	9
2016	290	214	4

In 2016, children aged 15 and under accounted for 18 percent of bicycle crash injuries.

BICYCLISTS INVOLVED IN CRASHES BY AGE

AGE	BICYCLISTS	INJURIES	FATALITIES	0	5	10	15	20	25	30	35	40
0-5	3	0	0									
6-10	20	19	0	=====								
11-15	25	20	0	=====								
16-20	33	24	1	=====								
21-25	33	25	0	=====								
26-30	12	10	0	=====								
31-40	29	19	1	=====								
41-50	38	28	1	=====								
51-60	53	39	0	=====								
61-70	26	23	1	=====								
71-up	3	1	0	=====								
Unknown	15	6	0	=====								
TOTAL	290	214	4									

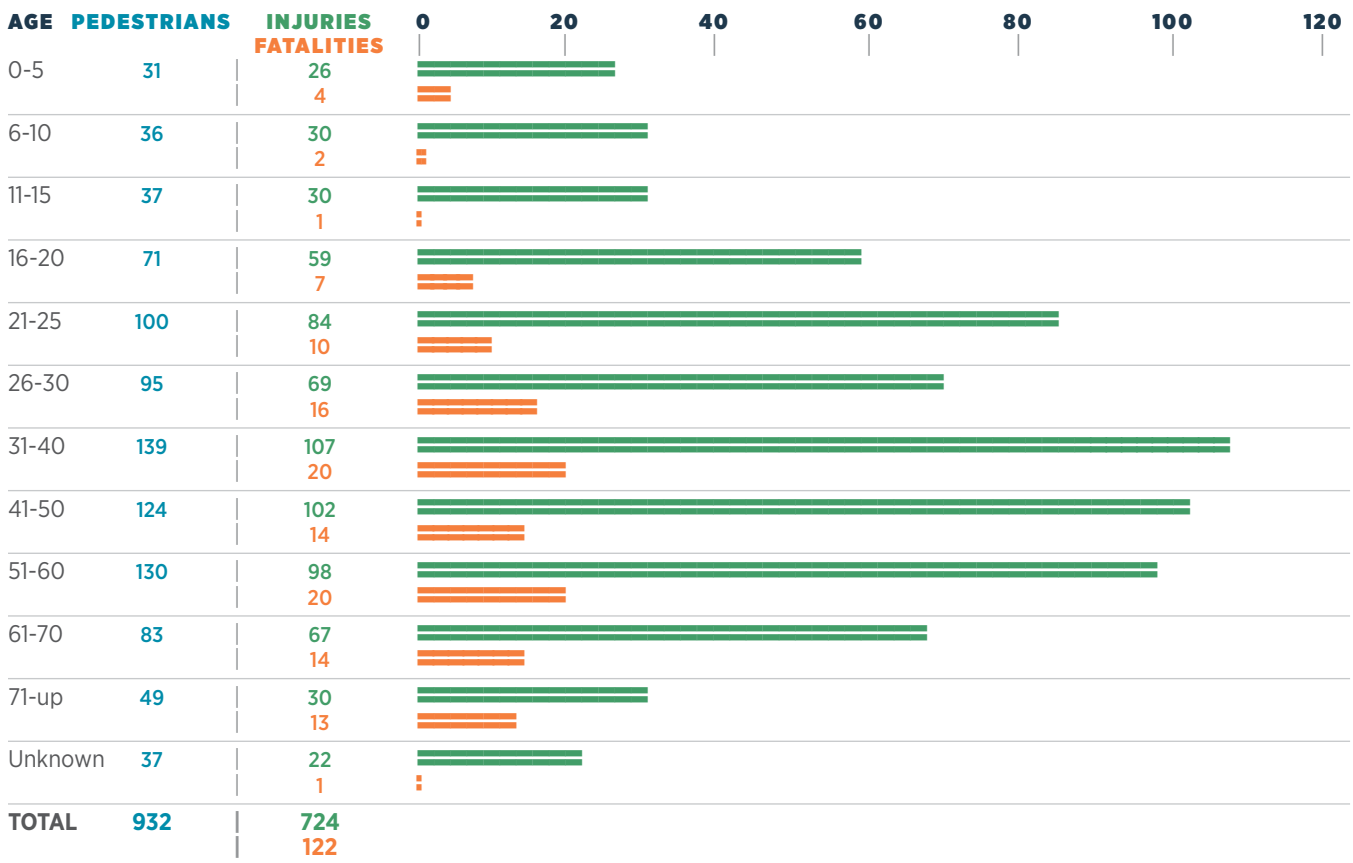
Pedestrian CRASH STATISTICS

TEN YEAR DATA

YEAR	PEDESTRIANS	INJURIES	FATALITIES
2007	618	549	69
2008	541	468	72
2009	604	511	65
2010	724	578	63
2011	741	589	84
2012	798	651	80
2013	757	639	57
2014	818	623	95
2015	834	656	96
2016	932	724	122

In 2016, the number of pedestrian injuries increased 10.4 percent, and pedestrian fatalities increased 27%.

PEDESTRIANS INVOLVED BY AGE AND SEVERITY



Train INVOLVED CRASH STATISTICS

TEN YEAR DATA



RAILROAD CRASHES

INJURY SEVERITY	PERSONS
Uninjured	26
Injured	42
Died	9
Unknown	0
TOTAL	78

THE NUMBER OF RAILROAD
injuries, fatalities,
 AND **crashes**
increased
 IN 2016.

Driver behavior issues include ignoring flashing lights or other active warning devices, passing through barrier gates, and driving around already lowered gates/failure to observe passive warning devices.

According to NHTSA, **a motorist is almost 20 times more likely to die in a crash involving a train** than in a collision involving another motor vehicle.

Work Zone CRASH STATISTICS

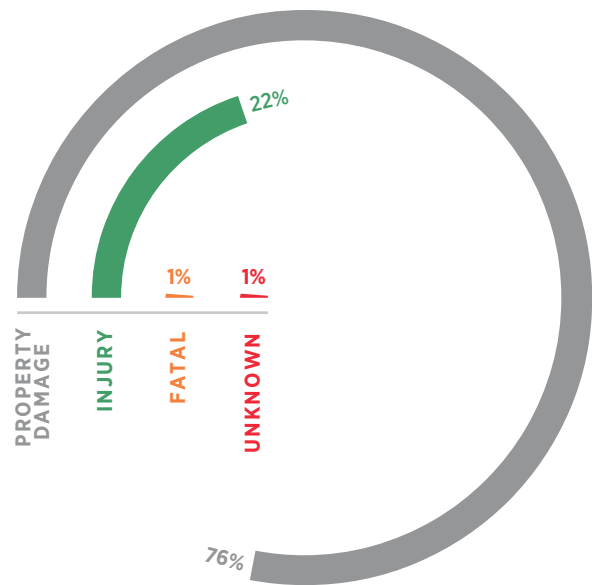
TEN YEAR DATA

YEAR	INJURY CRASHES	FATAL CRASHES
2007	478	31
2008	472	16
2009	518	9
2010	621	19
2011	585	19
2012	477	23
2013	541	22
2014	504	21
2015	492	31
2016	652	18

WORK ZONE CRASHES

CRASH SEVERITY	CRASHES
Property Damage	2,245
Injury	652
Fatal	18
Unknown	45
TOTAL	2,960

WORK ZONE CRASHES



Drivers need to be particularly alert when traveling through highway work zones. When a road is not in its usual condition due to construction, it is essential to slow down. Fines for speeding double in work zones when construction workers are present. Work zone crashes are dangerous to both highway workers and motorists. **Most work zone crashes are rear-end collisions, resulting from speeding or inattentive driving.**

ALABAMA'S THEME FOR THE ANNUAL Work Zone Awareness

PROMOTION IN APRIL 2016 WAS

Don't Be That Driver.



Truck CRASH STATISTICS

TEN YEAR DATA

YEAR	TRUCKS INVOLVED	INJURIES	FATALITIES
2007	8,809	2,202	136
2008	7,546	1,769	132
2009	6,704	1,615	84
2010	7,898	2,002	113
2011	6,927	1,715	92
2012	5,798	1,562	90
2013	7,322	1,982	116
2014	7,782	2,184	89
2015	8,484	2,367	118
2016	8,937	2,345	157

PRIMARY CAUSE OF ALL CRASHES WITH TRUCK INVOLVEMENT*

PRIMARY CAUSE	CRASHES	
Improper Lane Change or Use	1,104	12.4%
Failed to Yield Right of Way	847	9.5%
Unseen Object, Person, or Vehicle	817	9.2%
Tailgating	692	7.7%
Misjudged Stopping Distance	504	5.6%
Defective Equipment	399	4.5%
Improper Backing	360	4.0%
Improper Turn	322	3.6%
Avoiding Animal, Object, or Person	322	3.6%
Crossed Median/Centerline	272	3.0%
Failure to Heed Sign/Signal	233	2.6%
Fatigued/Asleep	200	2.2%
Driving too Fast for Conditions	176	2.0%
Improper Passing	173	1.9%
Ran Off Road	157	1.8%
Driving Under the Influence	111	1.2%
Over the Speed Limit	86	1.0%
Unknown	448	5.0%
All Other	1,714	19.2%
TOTAL	8,937	100%

*There is no inference as to whether the truck or another type of vehicle was the cause of the crash.

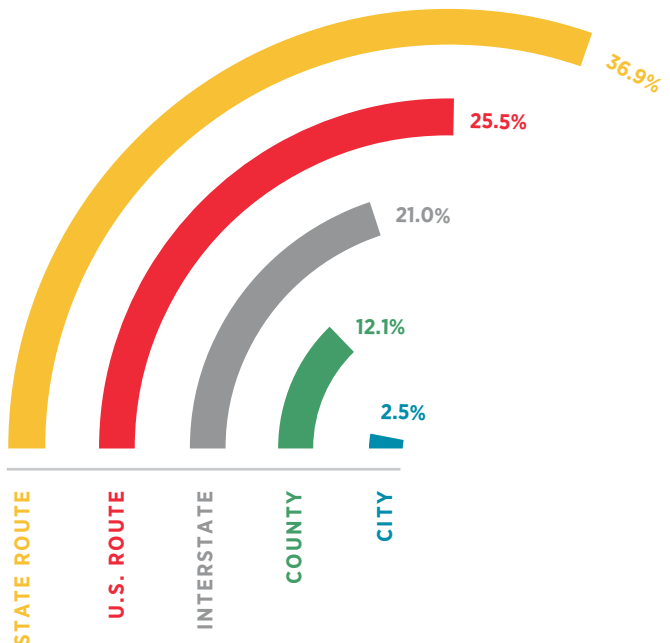
Truck Definition

A truck is defined as any vehicle heavier than a light truck or SUV, including delivery truck, 18 wheeler, tow truck, dually, or work truck. Truck does not include a bus of any type.

TOTAL FOR ALL CRASHES WITH TRUCK INVOLVEMENT

ROAD TYPE	CRASHES	FATALITIES
Interstate	2,461 27.5%	33 21.0%
U.S. Route	1,419 15.9%	40 25.5%
State Route	1,660 18.6%	58 36.9%
County	801 9.0%	19 12.1%
City	2,269 25.4%	4 2.5%
Other	327 3.7%	3 1.9%
TOTAL	8,937 100%	157 100%

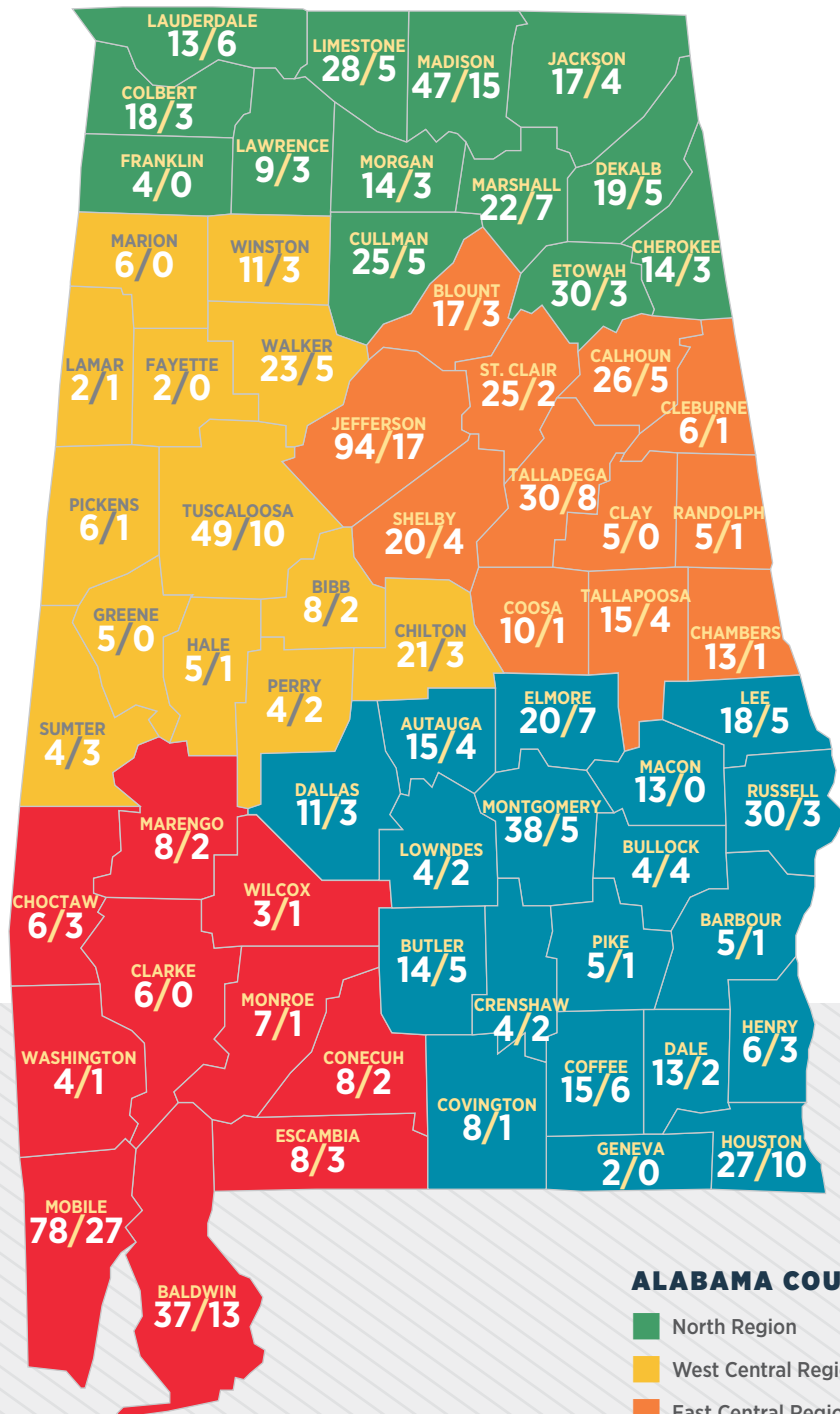
TRUCK INVOLVED FATALITIES BY ROAD TYPE



Fatalities BY COUNTY

TOTAL TRAFFIC FATALITIES 1,089 (First Figure)

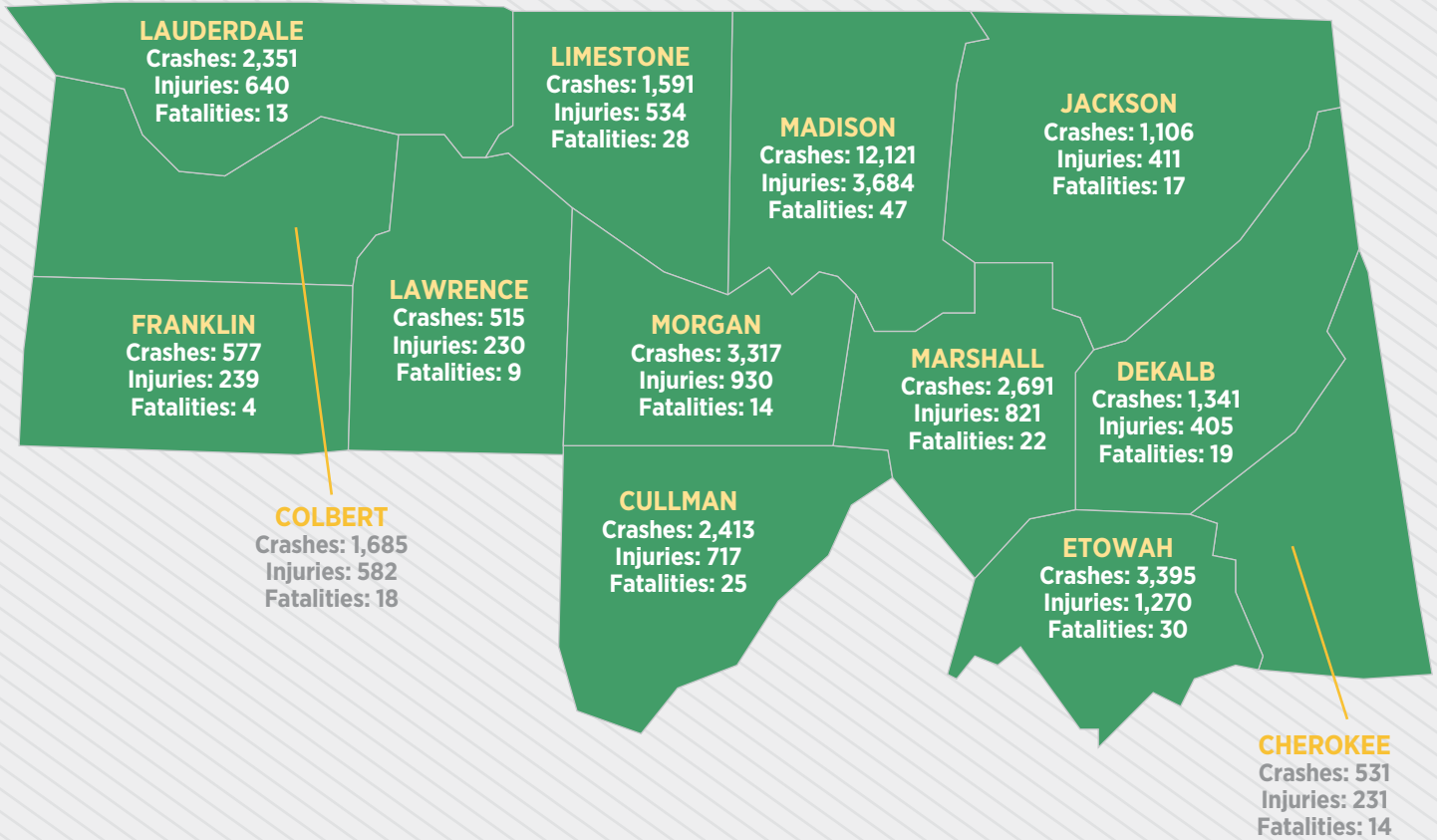
TRAFFIC FATALITIES WITH APPARENT ALCOHOL INVOLVEMENT 257 (Second Figure)





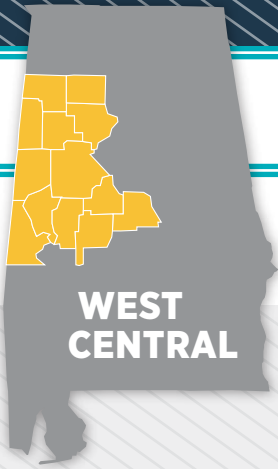
2016 Crashes by County

NORTH REGION STATISTICS



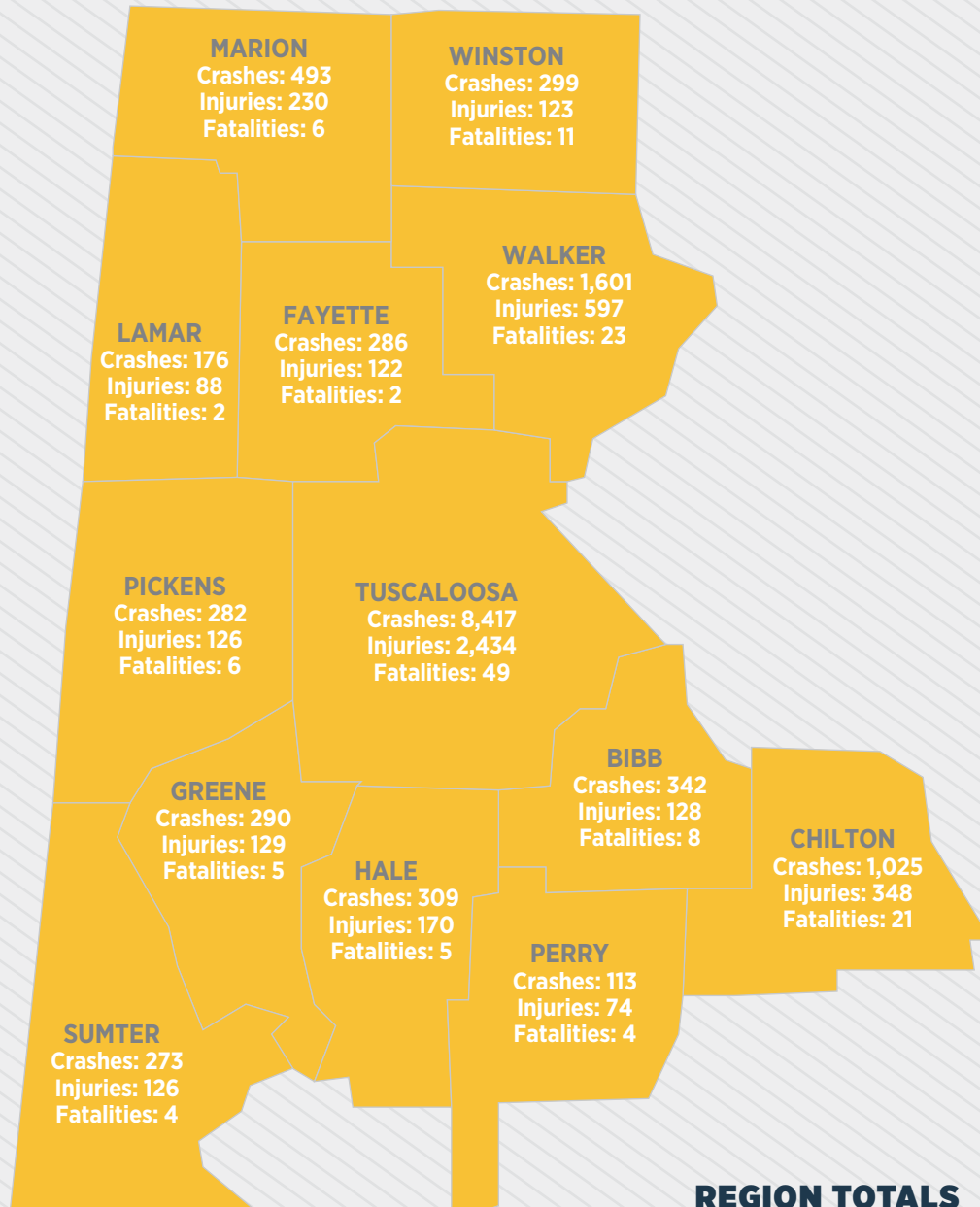
REGION TOTALS

TOTAL CRASHES	33,634
TOTAL INJURIES	10,694
TOTAL FATALITIES	260



2016 Crashes by County

WEST CENTRAL REGION STATISTICS



REGION TOTALS

TOTAL CRASHES 13,906

TOTAL INJURIES 4,695

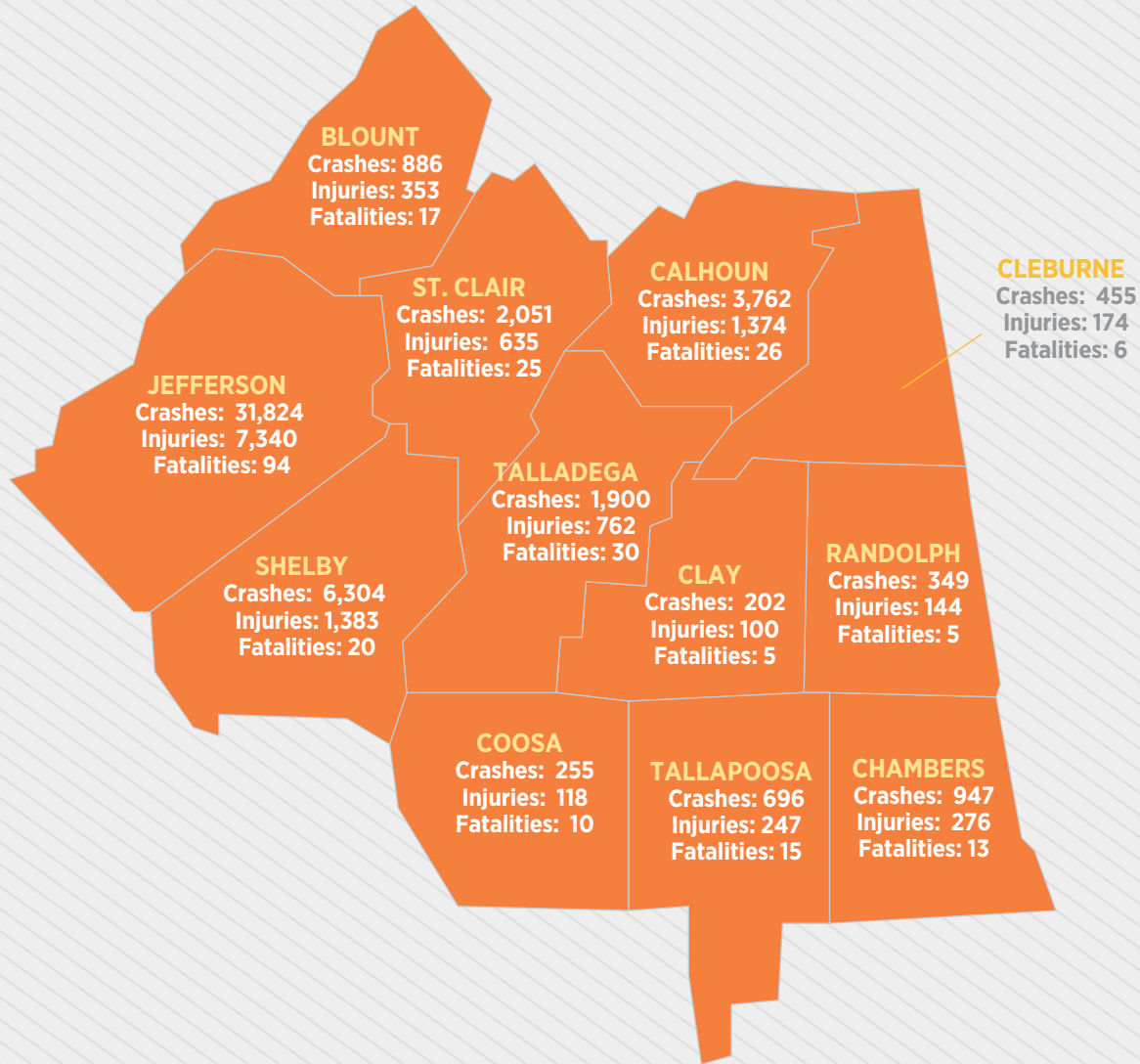
TOTAL FATALITIES 146





2016 Crashes by County

EAST CENTRAL REGION STATISTICS



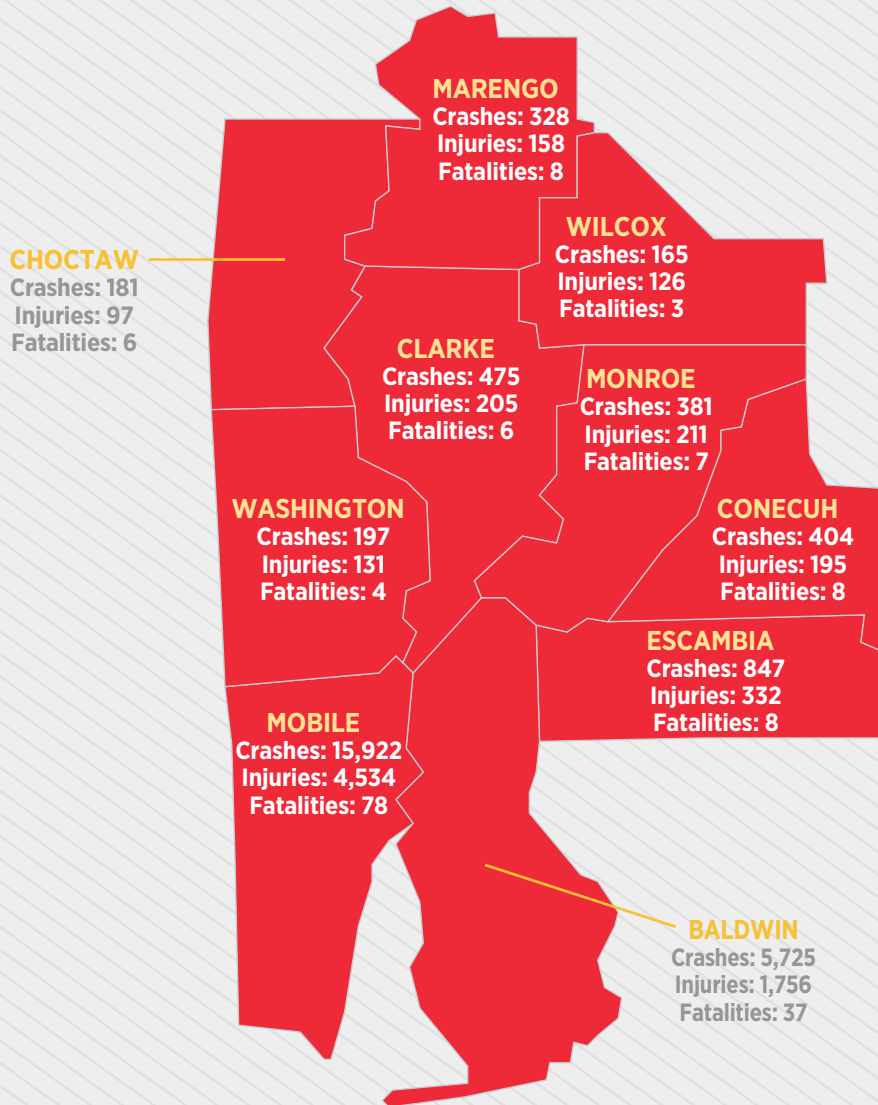
REGION TOTALS

TOTAL CRASHES	49,631
TOTAL INJURIES	12,906
TOTAL FATALITIES	266

2016 Crashes by County



SOUTHWEST REGION STATISTICS



REGION TOTALS

TOTAL CRASHES 24,625

TOTAL INJURIES 7,745

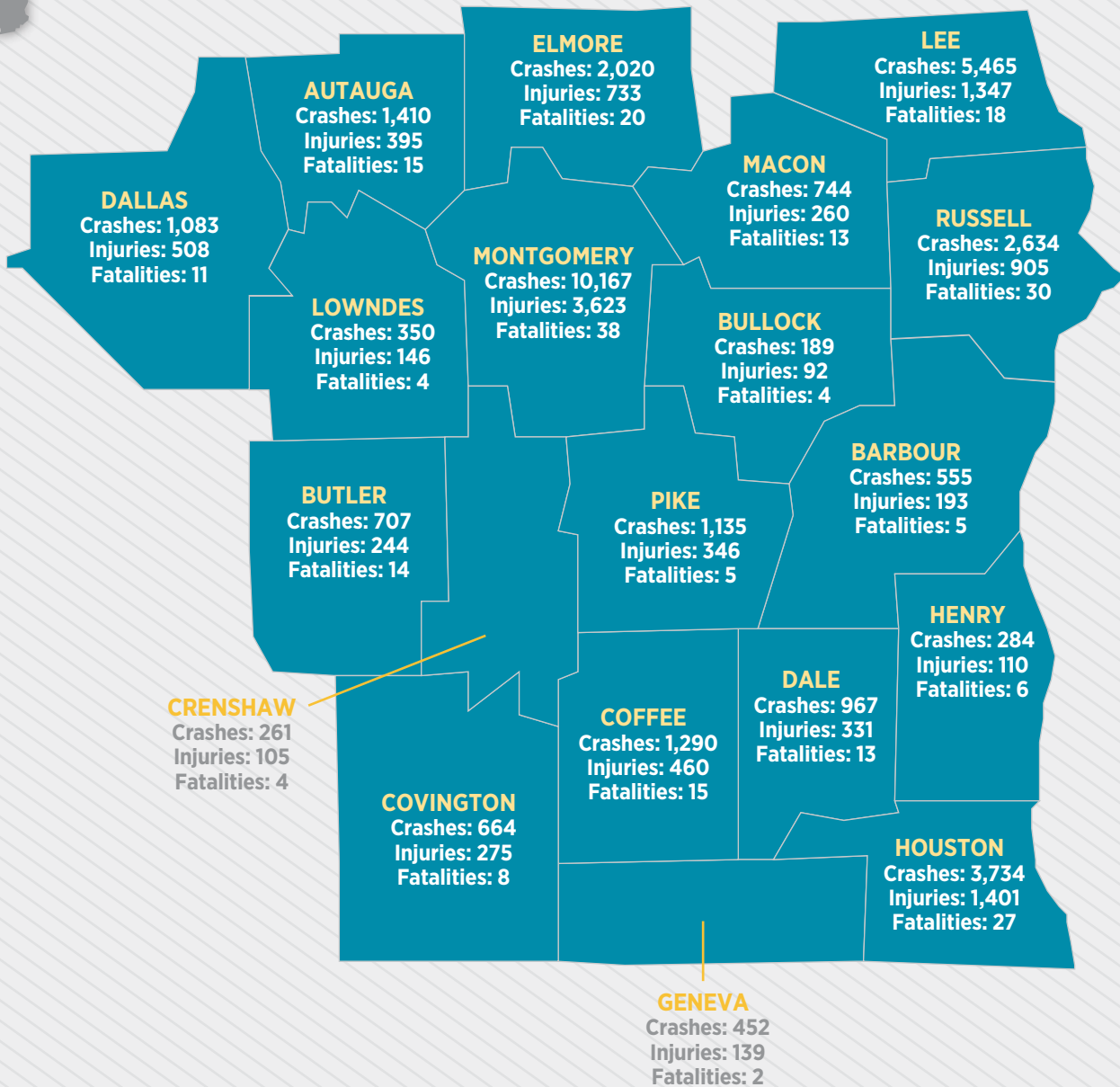
TOTAL FATALITIES 165



**SOUTH
EAST**

2016 Crashes by County

SOUTHEAST REGION STATISTICS



REGION TOTALS

TOTAL CRASHES 34,111

TOTAL INJURIES 11,613

TOTAL FATALITIES 252

COMPARATIVE County Statistics

2015 VS. 2016

COUNTY	TOTAL CRASHES FOR COUNTY						URBAN AREAS OF COUNTY						RURAL AREAS OF COUNTY					
	NUMBER OF CRASHES		PERSONS KILLED		PERSONS INJURED		NUMBER OF CRASHES		PERSONS KILLED		PERSONS INJURED		NUMBER OF CRASHES		PERSONS KILLED		PERSONS INJURED	
	2015	2016	2015	2016	2015	2016	2015	2016	2015	2016	2015	2016	2015	2016	2015	2016	2015	2016
Jefferson	27,409	31,824	80	94	5,974	7,340	26,031	29,098	67	71	5,637	6,702	1,378	2,726	13	23	337	638
Mobile	15,559	15,922	72	78	4,292	4,534	13,503	13,871	34	42	3,388	3,696	2,056	2,051	38	36	904	838
Montgomery	9,938	10,167	33	38	3,428	3,623	9,109	9,376	27	28	3,176	3,365	829	791	6	10	252	258
Autauga	1,381	1,410	8	15	433	395	925	914	1	1	252	244	456	496	7	14	181	151
Baldwin	4,962	5,725	32	37	1,513	1,756	3,686	4,323	15	16	1,005	1,116	1,276	1,402	17	21	508	640
Barbour	604	555	7	5	222	193	443	408	3	3	142	126	161	147	4	2	80	67
Bibb	337	342	5	8	129	128	171	161	1	2	61	63	166	181	4	6	68	65
Blount	914	886	5	17	385	353	345	303	2	2	131	95	569	583	3	15	254	258
Bullock	232	189	6	4	110	92	131	103	0	1	41	34	101	86	6	3	69	58
Butler	654	707	7	14	182	244	312	323	2	3	75	97	342	384	5	11	107	147
Calhoun	3,687	3,762	15	26	1,333	1,374	2,741	2,770	7	6	899	904	946	992	8	20	434	470
Chambers	844	947	9	13	296	276	575	711	5	6	169	169	269	236	4	7	127	107
Cherokee	519	531	9	14	218	231	226	242	4	8	78	82	293	289	5	6	140	149
Chilton	990	1,025	17	21	311	348	444	469	2	4	101	148	546	556	15	17	210	200
Choctaw	189	181	3	6	84	97	69	86	0	1	20	35	120	95	3	5	64	62
Clarke	511	475	4	6	259	205	329	359	1	4	123	149	182	116	3	2	136	56
Clay	180	202	1	5	81	100	78	102	0	0	20	32	102	100	1	5	61	68
Cleburne	428	455	6	6	164	174	70	74	1	2	27	39	358	381	5	4	137	135
Coffee	1,192	1,290	10	15	339	460	889	942	4	3	196	263	303	348	6	12	143	197
Colbert	1,764	1,685	14	18	526	582	1,382	1,270	4	9	329	341	382	415	10	9	197	241
Conecuh	372	404	6	8	157	195	107	156	0	2	45	66	265	248	6	6	112	129
Coosa	238	255	3	10	111	118	27	34	0	2	14	13	211	221	3	8	97	105
Covington	647	664	6	8	292	275	406	415	3	5	156	166	241	249	3	3	136	109
Crenshaw	271	261	3	4	80	105	106	99	1	0	10	33	165	162	2	4	70	72
Cullman	2,423	2,413	25	25	707	717	1,266	1,334	6	5	274	306	1,157	1,079	19	20	433	411
Dale	908	967	8	13	320	331	668	720	4	5	219	218	240	247	4	8	101	113
Dallas	1,039	1,083	8	11	420	508	631	681	1	3	223	269	408	402	7	8	197	239
Dekalb	1,276	1,341	12	19	431	405	818	870	5	6	204	190	458	471	7	13	227	215
Elmore	1,974	2,020	18	20	688	733	1,321	1,380	6	7	462	532	653	640	12	13	226	201
Escambia	862	847	20	8	315	332	453	443	2	2	117	129	409	404	18	6	198	203
Etowah	3,301	3,395	14	30	1,081	1,270	2,760	2,933	7	18	831	1,061	541	462	7	12	250	209
Fayette	268	286	2	2	98	122	152	152	0	1	44	45	116	134	2	1	54	77
Franklin	563	577	5	4	268	239	324	327	2	1	118	117	239	250	3	3	150	122
Geneva	418	452	7	2	166	139	201	230	1	1	60	54	217	222	6	1	106	85
Greene	333	290	8	5	150	129	50	43	3	0	18	34	283	247	5	5	132	95
Hale	311	309	2	5	149	170	130	149	0	2	51	78	181	160	2	3	98	92
Henry	287	284	2	6	105	110	170	163	1	1	48	47	117	121	1	5	57	63
Houston	3,631	3,734	12	27	1,404	1,401	3,136	3,267	4	16	1,205	1,185	495	467	8	11	199	216
Jackson	1,015	1,106	18	17	387	411	715	771	10	5	231	236	300	335	8	12	156	175



COMPARATIVE County Statistics

2015 VS. 2016 (continued)

COUNTY	TOTAL CRASHES FOR COUNTY						URBAN AREAS OF COUNTY						RURAL AREAS OF COUNTY					
	NUMBER OF CRASHES		PERSONS KILLED		PERSONS INJURED		NUMBER OF CRASHES		PERSONS KILLED		PERSONS INJURED		NUMBER OF CRASHES		PERSONS KILLED		PERSONS INJURED	
	2015	2016	2015	2016	2015	2016	2015	2016	2015	2016	2015	2016	2015	2016	2015	2016	2015	2016
Lamar	162	176	4	2	68	88	70	81	0	0	15	38	92	95	4	2	53	50
Lauderdale	2,232	2,351	17	13	640	640	1,636	1,721	8	4	378	370	596	630	9	9	262	270
Lawrence	544	515	8	9	230	230	173	132	0	1	37	43	371	383	8	8	193	187
Lee	5,144	5,465	12	18	1,176	1,347	4,384	4,652	6	9	874	1,054	760	813	6	9	302	293
Limestone	1,792	1,591	22	28	607	534	852	731	4	4	224	187	940	860	18	24	383	347
Lowndes	346	350	2	4	169	146	41	31	0	1	33	13	305	319	2	3	136	133
Macon	676	744	6	13	261	260	226	228	1	1	89	92	450	516	5	12	172	168
Madison	10,984	12,121	24	47	3,056	3,684	9,201	10,214	13	29	2,387	2,994	1,783	1,907	11	18	669	690
Marengo	359	328	2	8	166	158	192	181	0	2	40	45	167	147	2	6	126	113
Marion	555	493	9	6	229	230	354	332	1	3	129	125	201	161	8	3	100	105
Marshall	2,390	2,691	13	22	811	821	1,868	2,092	7	6	535	537	522	599	6	16	276	284
Monroe	211	381	6	7	126	211	47	209	2	0	28	108	164	172	4	7	98	103
Morgan	3,153	3,317	10	14	833	930	2,406	2,652	4	8	556	659	747	665	6	6	277	271
Perry	117	113	3	4	70	74	35	40	0	2	30	30	82	73	3	2	40	44
Pickens	290	282	6	6	126	126	137	127	0	1	37	45	153	155	6	5	89	81
Pike	1,107	1,135	15	5	375	346	817	812	6	0	226	208	290	323	9	5	149	138
Randolph	330	349	2	5	154	144	150	185	1	1	46	67	180	164	1	4	108	77
Russell	2,849	2,634	17	30	974	905	2,261	2,091	5	6	681	609	588	543	12	24	293	296
St. Clair	2,040	2,051	19	20	633	635	1,238	1,305	8	6	337	329	802	746	11	14	296	306
Shelby	5,994	6,304	19	25	1,234	1,383	4,636	4,794	7	14	872	952	1,358	1,510	12	11	362	431
Sumter	287	273	9	4	140	126	96	90	1	0	32	43	191	183	8	4	108	83
Talladega	1,835	1,900	19	30	656	762	1,034	1,048	3	10	294	327	801	852	16	20	362	435
Tallapoosa	690	696	7	15	262	247	498	474	4	7	182	154	192	222	3	8	80	93
Tuscaloosa	8,554	8,417	41	49	2,410	2,434	6,689	6,621	14	16	1,800	1,797	1,865	1,796	27	33	610	637
Walker	1,698	1,601	17	23	672	597	968	928	2	2	256	268	730	673	15	21	416	329
Washington	202	197	4	4	115	131	52	47	1	1	22	30	150	150	3	3	93	101
Wilcox	163	165	6	3	96	126	48	69	2	0	16	51	115	96	4	3	80	75
Winston	317	299	8	11	123	123	161	156	1	1	42	52	156	143	7	10	81	71
TOTAL	147,452	155,907	849	1,089	44,020	47,653	115,170	122,115	337	429	30,398	33,706	32,282	33,792	512	660	13,622	13,947

COMPARATIVE City Statistics

2015 VS. 2016

CITY	NUMBER OF CRASHES		PERSONS KILLED		PERSONS INJURED	
	2015	2016	2015	2016	2015	2016
Abbeville	59	63	1	1	19	21
Adamsville	220	165	2	3	66	74
Addison	8	14	0	0	0	4
Akron	1	3	0	0	0	2
Alabaster	1,026	1,050	2	0	210	237
Albertville	799	893	3	2	221	221
Alexander City	319	273	3	2	104	75
Aliceville	30	32	0	1	6	13
Allgood	2	2	0	0	0	1
Altoona	11	19	0	1	1	12
Andalusia	226	222	0	0	74	69
Anderson	4	6	0	0	2	1
Anniston	1,303	1,331	4	3	398	441
Arab	190	198	0	0	54	43
Ardmore	45	38	0	0	12	7
Argo	51	64	0	0	5	14
Ariton	3	10	0	1	1	2
Arley	2	3	0	0	0	0
Ashford	35	50	0	1	13	27
Ashland	41	57	0	0	5	23
Ashville	110	117	5	0	43	45
Athens	587	428	1	0	138	106
Atmore	147	142	0	0	64	50
Attalla	284	268	0	3	61	86
Auburn	1,922	2,017	2	5	389	429
Autaugaville	8	10	0	0	0	3
Avon	4	2	0	0	0	0
Babbie	3	2	0	0	1	0
Baileyton	13	12	0	1	7	3
Bakerhill	14	11	0	0	10	7
Banks	2	2	0	0	1	1
Bay Minette	161	173	0	0	61	51
Bayou La Batre	88	83	0	0	23	28
Bear Creek	13	19	0	1	6	13
Beatrice	1	4	0	0	1	1
Beaverton	1	4	0	0	0	12
Belk	2	1	0	0	1	1
Bellwood	5	2	0	0	4	0
Benton	1	1	0	0	3	0
Berry	18	17	0	1	8	11

CITY	NUMBER OF CRASHES		PERSONS KILLED		PERSONS INJURED	
	2015	2016	2015	2016	2015	2016
Bessemer	1,673	1,632	8	7	451	432
Big Cove	2	1	0	0	0	1
Billingsley	1	1	0	0	0	0
Birmingham	15,723	18,329	40	44	3,424	4,250
Black	2	1	0	0	2	0
Blountsville	49	27	0	0	32	9
Blue Mountain	5	1	0	0	3	2
Blue Springs	0	2	0	0	0	1
Boaz	378	426	2	2	136	131
Boligee	3	0	0	0	0	0
Bon Air	2	1	0	0	2	0
Branchville	0	7	0	0	0	1
Brantley	4	11	0	0	0	2
Brent	61	45	0	1	20	19
Brewton	216	213	2	1	28	56
Bridgeport	28	33	0	0	12	19
Brighton	2	12	0	0	0	5
Brilliant	13	10	0	0	10	5
Brookside	4	5	0	0	2	2
Brookwood	53	51	0	1	19	18
Brownsville	0	0	0	0	0	0
Brundidge	70	65	2	0	21	23
Butler	46	50	0	1	12	23
Calera	620	553	3	4	125	93
Camden	25	32	1	0	2	27
Camp Hill	20	24	0	4	9	16
Carbon Hill	21	18	0	1	2	7
Cardiff	0	0	0	0	0	0
Carolina	3	4	0	0	0	1
Carrollton	27	27	0	0	4	8
Carrville	0	0	0	0	0	0
Castleberry	10	10	0	0	0	4
Cedar Bluff	40	40	1	0	13	9
Center Point	2	3	0	0	0	1
Centre	141	143	1	1	39	44
Centreville	52	51	1	0	18	25
Chatom	19	19	0	0	7	10
Chelsea	163	168	0	2	32	34
Cherokee	18	21	1	1	3	8
Chickasaw	91	124	1	0	26	32



COMPARATIVE City Statistics

2015 VS. 2016 (continued)

CITY	NUMBER OF CRASHES		PERSONS KILLED		PERSONS INJURED	
	2015	2016	2015	2016	2015	2016
Childersburg	1	43	0	3	0	22
Citronelle	86	120	1	0	27	41
Clanton	326	341	1	3	64	102
Clay	0	0	0	0	0	0
Clayhatchee	6	2	0	0	2	0
Clayton	20	10	0	1	7	2
Cleveland	14	17	0	0	13	3
Clio	9	9	1	0	5	8
Coaling	39	45	1	2	20	17
Coffee Springs	1	1	0	0	0	0
Coffeetown	5	9	0	0	0	3
Collinsville	42	41	0	0	9	10
Colony	2	2	0	0	0	1
Columbia	9	10	0	0	2	5
Columbiana	94	115	0	0	22	34
Coosada	29	56	0	0	21	31
Cordova	23	12	0	0	3	2
Cottonwood	19	11	0	0	10	4
County Line-Jeff	2	2	0	0	0	0
Courtland	11	1	0	0	0	1
Cowarts	14	20	0	0	13	11
Creola	73	70	1	3	30	13
Crossville	23	45	0	1	7	14
Cuba	9	3	0	0	4	5
Cullman	953	1,007	4	3	195	204
Dadeville	83	95	1	0	26	31
Daleville	92	140	2	0	36	34
Daphne	917	975	2	5	237	202
Dauphin Island	42	21	0	0	21	6
Daviston	0	0	0	0	0	0
Dayton	1	0	0	0	0	0
Deatsville	3	2	0	0	0	1
Decatur	1,944	2,122	3	4	463	535
Demopolis	145	128	0	0	33	27
Detroit	2	0	0	0	0	0
Dodge City	56	48	1	0	9	10
Dora	83	82	0	0	18	23
Dothan	2,964	3,098	4	14	1,125	1,083
Double Springs	22	23	0	0	6	8
Douglas	28	29	0	0	9	9

CITY	NUMBER OF CRASHES		PERSONS KILLED		PERSONS INJURED	
	2015	2016	2015	2016	2015	2016
Dozier	5	2	0	0	1	0
Dutton	6	6	0	1	7	3
East Brewton	41	46	0	0	12	15
Eclectic	34	38	0	0	10	18
Edwardsville	0	2	0	0	0	1
Elba	48	39	0	0	15	11
Elberta	55	78	1	0	16	31
Eldridge	0	2	0	0	0	0
Elkmont	6	0	0	0	1	0
Elmore	17	22	0	0	7	14
Emelle	0	1	0	0	0	0
Enterprise	824	883	5	3	171	239
Epes	0	0	0	0	0	0
Ethelsville	0	0	0	0	0	0
Eufaula	400	374	3	2	120	108
Eunola	1	2	0	0	1	0
Eutaw	44	43	2	0	18	34
Eva	1	3	0	0	0	2
Evergreen	96	140	0	2	45	57
Excel	22	17	0	0	13	6
Fairfield	339	350	1	1	143	107
Fairhope	421	578	1	0	102	124
Fairview	15	16	0	0	9	8
Falkville	34	30	1	0	7	7
Faunsdale	0	1	0	0	0	2
Fayette	108	124	0	0	26	27
Five Points	1	7	0	0	0	2
Flint City	0	0	0	0	0	0
Flomaton	49	41	0	1	13	7
Floral	29	28	0	0	11	10
Florence	1,447	1,543	5	4	336	320
Foley	780	952	4	2	187	288
Forkland	3	0	1	0	0	0
Fort Deposit	2	3	0	0	2	1
Fort Payne	375	451	0	4	60	56
Franklin	9	9	0	1	3	2
Frisco City	22	28	2	0	13	18
Fruithurst	3	0	0	0	0	0
Fulton	4	13	0	0	0	14
Fultondale	327	331	1	1	85	86

CITY	NUMBER OF CRASHES		PERSONS KILLED		PERSONS INJURED	
	2015	2016	2015	2016	2015	2016
Fyffe	18	20	0	0	5	5
Gadsden	1,807	1,858	4	9	549	685
Gainesville	3	1	0	0	2	0
Gantt	1	7	0	0	0	3
Gantts Quarry	0	0	0	0	0	0
Garden City	4	9	0	1	2	6
Gardendale	257	307	0	1	70	75
Gaylesville	2	2	0	0	1	4
Geiger	0	0	0	0	0	0
Geneva	82	91	1	0	22	23
Georgiana	26	32	0	0	4	19
Geraldine	16	27	0	1	2	14
Gilbertown	22	23	0	0	8	8
Glen Allen	2	0	0	0	1	0
Glencoe	113	133	1	3	32	36
Glenwood	0	1	0	0	0	0
Goldville	0	0	0	0	0	0
Good Hope	80	77	0	0	21	22
Goodwater	24	27	0	2	10	11
Gordo	31	26	0	0	11	11
Gordon	2	2	0	0	1	1
Gordonville	1	2	0	0	1	0
Goshen	3	4	0	0	1	0
Grant	15	15	1	0	5	2
Graysville	0	17	0	0	0	6
Greensboro	68	64	0	0	32	34
Greenville	279	287	2	3	67	77
Grimes	16	15	0	0	6	5
Grove Hill	45	54	0	3	18	22
Gu-Win	0	1	0	0	0	0
Guin	35	35	0	0	12	14
Gulf Shores	610	674	2	3	172	159
Guntersville	475	568	2	3	119	149
Gurley	34	41	0	0	15	16
Hackleburg	20	11	0	0	11	8
Haleburg	0	1	0	0	0	0
Haleyville	132	124	0	1	32	44
Hamilton	162	151	1	2	55	43
Hammondville	5	9	0	0	2	4
Hanceville	112	107	0	0	14	28

CITY	NUMBER OF CRASHES		PERSONS KILLED		PERSONS INJURED	
	2015	2016	2015	2016	2015	2016
Harpersville	64	68	0	0	29	34
Hartford	30	47	0	0	2	9
Hartselle	348	395	1	1	53	96
Hayden	17	35	0	0	4	16
Hayneville	23	15	0	0	19	9
Headland	108	96	0	0	27	25
Heath	6	4	0	1	1	1
Heflin	60	61	1	2	25	31
Helena	215	256	0	0	49	57
Henagar	49	37	1	0	24	16
Higdon	3	8	0	0	3	2
Highland Lake	0	1	0	0	0	0
Hillsboro	1	1	0	1	0	1
Hobson City	8	9	0	0	2	5
Hodges	1	3	0	0	0	2
Hokes Bluff	70	94	0	0	26	61
Holly Pond	15	19	0	0	11	9
Hollywood	24	16	1	0	6	10
Homewood	1,629	1,657	2	0	201	256
Hoover	3,135	3,258	6	8	501	622
Hornhill	0	3	0	2	0	0
Hueytown	248	253	0	1	54	53
Huntsville	7,960	8,984	11	24	2,090	2,653
Hurtsboro	5	4	0	0	3	1
Hytop	0	4	0	0	0	1
Ider	21	13	0	0	8	10
Indian Springs	8	12	0	0	1	2
Irondale	217	263	0	0	59	88
Jackson	142	155	1	1	52	60
Jacksons Gap	13	18	0	0	10	7
Jacksonville	297	315	0	0	106	118
Jasper	703	686	1	1	184	196
Jemison	65	61	1	1	18	23
Kansas	0	0	0	0	0	0
Kelly	0	0	0	0	0	0
Kennedy	8	4	0	0	2	0
Killen	62	61	0	0	15	20
Kimberly	11	29	0	0	5	15
Kinsey	39	16	0	1	18	5
Kinston	12	7	0	0	6	5



COMPARATIVE City Statistics

2015 VS. 2016 (continued)

CITY	NUMBER OF CRASHES		PERSONS KILLED		PERSONS INJURED	
	2015	2016	2015	2016	2015	2016
Lafayette	52	72	1	3	14	15
Lake View	13	19	0	0	6	6
Lakeview	7	1	0	0	4	0
Lanett	236	288	1	0	54	74
Langston	1	2	0	0	0	0
Leeds	213	251	0	1	61	95
Leesburg	40	48	2	7	24	19
Leighton	9	7	0	0	4	10
Lester	0	0	0	0	0	0
Level Plains	49	32	0	0	11	10
Lexington	10	14	1	0	1	2
Libertyville	3	0	0	0	3	0
Lincoln	319	309	1	4	44	79
Linden	34	41	0	1	4	11
Lineville	37	45	0	0	15	9
Lipscomb	22	9	0	0	3	7
Lisman	0	4	0	0	0	1
Littleville	23	25	0	1	23	22
Livingston	59	54	1	0	23	26
Loachapoka	4	5	0	0	2	1
Lockhart	4	5	0	0	1	0
Locust Fork	13	12	0	0	2	4
Louisville	0	1	0	0	0	0
Lowndesboro	5	1	0	1	2	1
Loxley	153	170	0	1	60	55
Luverne	86	78	1	0	6	29
Lynn	9	9	1	0	8	2
Macedonia	0	0	0	0	0	0
Madison	1,257	1,249	3	5	293	321
Madrid	3	2	0	0	4	2
Malvern	14	12	0	1	7	6
Maplesville	22	30	0	0	13	8
Margaret	26	24	0	0	7	6
Marion	0	11	0	0	0	7
Maytown	0	0	0	0	0	0
Mcintosh	24	20	0	1	14	14
Mckenzie	7	4	0	0	4	1
Mcmullen	1	0	0	0	0	0
Memphis	0	0	0	0	0	0
Mentone	10	10	0	0	1	3

CITY	NUMBER OF CRASHES		PERSONS KILLED		PERSONS INJURED	
	2015	2016	2015	2016	2015	2016
Midfield	215	215	1	1	88	84
Midland City	84	72	1	0	37	26
Midway	0	0	0	0	0	0
Millbrook	433	462	0	3	179	232
Millport	0	0	0	0	0	0
Millry	9	8	1	0	1	6
Mobile	11,641	11,867	16	34	2,801	3,013
Monroeville	2	160	0	0	1	83
Montevallo	151	206	0	3	35	59
Montgomery	9,070	9,332	29	25	3,171	3,351
Moody	303	356	1	0	73	76
Moores Crossroads	1	0	0	0	0	0
Mooresville	1	1	0	0	0	2
Morris	23	24	0	0	2	2
Mosses	3	3	0	0	1	1
Moulton	138	109	0	0	28	37
Moundville	66	87	0	1	20	42
Mountain Brook	577	653	0	0	81	131
Mountainboro	2	4	0	0	0	3
Mt. Vernon	42	42	1	1	16	30
Mulga	0	2	0	0	0	4
Munford	46	47	0	0	23	24
Muscle Shoals	781	678	3	2	189	150
Myrtlewood	1	0	0	0	0	0
Napier Field	2	2	0	0	1	0
Nauvoo	2	1	0	0	1	0
Nectar	4	3	0	0	1	5
Needham	0	0	0	0	0	0
New Brockton	8	15	0	0	8	8
New Hope	49	47	0	1	19	17
New Site	9	13	0	0	4	10
Newbern	0	1	0	1	0	2
Newsome	0	0	0	0	0	0
Newton	61	49	0	1	12	32
Newville	3	3	0	0	2	1
North Bibb	0	0	0	0	0	0
North Courtland	2	5	0	0	0	1
North Johns	0	1	0	0	0	0
Northport	1,206	1,209	4	1	293	266
Notasulga	10	19	0	0	5	4

CITY	NUMBER OF CRASHES		PERSONS KILLED		PERSONS INJURED	
	2015	2016	2015	2016	2015	2016
Oak Grove	14	13	0	0	6	8
Oak Hill	1	0	0	0	0	0
Oakman	16	4	0	0	2	1
Odenville	114	114	0	0	31	36
Ohatchee	45	32	1	0	21	8
Oneonta	184	146	0	1	48	34
Onycha	1	1	0	0	0	0
Opelika	2,322	2,528	3	4	446	577
Opp	104	115	3	0	54	62
Orange Beach	304	356	0	2	78	116
Orrville	6	6	0	0	1	5
Owens Crossroads	29	50	0	0	10	27
Oxford	916	932	2	2	328	290
Ozark	325	368	1	3	102	98
Paint Rock	5	3	0	0	2	1
Parrish	12	19	1	0	6	2
Pelham	1,232	1,237	2	3	195	197
Pell City	456	447	2	3	120	112
Pennington	0	1	0	0	0	0
Petrey	1	2	0	0	1	0
Phenix City	2,296	2,130	6	6	684	619
Phil Campbell	22	22	0	1	8	9
Pickensville	3	4	0	0	0	2
Piedmont	125	113	0	0	30	37
Pike Road	36	43	0	3	5	14
Pinckard	23	22	0	0	7	10
Pine Apple	0	5	0	0	0	5
Pine Hill	21	31	1	0	14	18
Pine Ridge	4	4	0	0	2	1
Pisgah	7	3	0	0	4	2
Pleasant Grove	87	68	0	0	26	23
Pollard	0	1	0	0	0	1
Powell	18	13	0	0	5	9
Prattville	1,120	1,089	1	1	306	287
Priceville	101	132	0	3	33	33
Prichard	837	906	8	3	259	351
Providence	3	0	0	0	1	0
Ragland	22	18	0	1	7	2
Rainbow City	291	313	0	0	62	67
Rainsville	175	171	4	0	65	42

CITY	NUMBER OF CRASHES		PERSONS KILLED		PERSONS INJURED	
	2015	2016	2015	2016	2015	2016
Ranburne	7	11	0	0	2	7
Red Bay	56	62	0	0	20	16
Red Level	2	6	0	2	1	4
Reece City	16	12	0	0	9	5
Reform	45	38	0	0	16	11
Rehobeth	8	7	0	0	5	4
Repton	1	6	0	0	0	5
Ridgeville	0	0	0	0	0	0
River Falls	16	14	0	0	7	15
Riverside	38	41	0	2	11	12
Riverview	0	0	0	0	0	0
Roanoke	105	127	1	1	30	44
Robertsdale	178	217	3	0	49	40
Rockford	3	7	0	0	4	2
Rogersville	53	55	0	0	7	15
Roosevelt City	1	0	0	0	0	0
Rosa	3	3	0	0	1	4
Rural Autauga	456	496	7	14	181	151
Rural Baldwin	1,276	1,402	17	22	508	640
Rural Barbour	161	147	5	2	80	67
Rural Bibb	166	181	4	6	68	65
Rural Blount	569	583	6	15	254	258
Rural Bullock	101	86	6	3	69	58
Rural Butler	342	384	5	11	107	147
Rural Calhoun	946	992	8	20	434	470
Rural Chambers	269	236	4	7	127	107
Rural Cherokee	293	289	5	6	140	149
Rural Chilton	546	556	15	17	210	200
Rural Choctaw	120	95	2	5	64	62
Rural Clarke	182	116	3	2	136	56
Rural Clay	102	100	1	5	61	68
Rural Cleburne	358	381	5	4	137	135
Rural Coffee	303	348	6	12	143	197
Rural Colbert	382	415	10	9	197	241
Rural Conecuh	265	248	6	6	112	129
Rural Coosa	211	221	3	8	97	105
Rural Covington	241	249	3	3	136	109
Rural Crenshaw	165	162	2	4	70	72
Rural Cullman	1,157	1,079	18	20	433	411
Rural Dale	240	247	5	9	101	113



COMPARATIVE City Statistics

2015 VS. 2016 (continued)

CITY	NUMBER OF CRASHES		PERSONS KILLED		PERSONS INJURED	
	2015	2016	2015	2016	2015	2016
Rural Dallas	408	402	7	8	197	239
Rural Dekalb	458	471	7	13	227	215
Rural Elmore	653	640	12	13	226	201
Rural Escambia	409	404	18	6	198	203
Rural Etowah	541	462	7	12	250	209
Rural Fayette	116	134	2	1	54	77
Rural Franklin	239	250	3	3	150	122
Rural Geneva	217	222	6	2	106	85
Rural Greene	283	247	5	5	132	95
Rural Hale	181	160	2	3	98	92
Rural Henry	117	121	1	5	57	63
Rural Houston	495	467	9	11	199	216
Rural Jackson	300	335	7	12	156	175
Rural Jefferson	1,378	2,726	9	22	337	638
Rural Lamar	92	95	4	2	53	50
Rural Lauderdale	596	630	10	9	262	270
Rural Lawrence	371	383	8	8	193	187
Rural Lee	760	813	5	9	302	293
Rural Limestone	940	860	15	23	383	347
Rural Lowndes	305	319	2	4	136	133
Rural Macon	450	516	5	12	172	168
Rural Madison	1,783	1,907	11	18	669	690
Rural Marengo	167	147	2	6	126	113
Rural Marion	201	161	8	3	100	105
Rural Marshall	522	599	6	16	276	284
Rural Mobile	2,056	2,051	40	33	904	838
Rural Monroe	164	172	4	7	98	103
Rural Montgomery	829	791	7	10	252	258
Rural Morgan	747	665	6	6	277	271
Rural Perry	82	73	3	2	40	44
Rural Pickens	153	155	6	5	89	81
Rural Pike	290	323	10	5	149	138
Rural Randolph	180	164	2	4	108	77
Rural Russell	588	543	12	24	293	296
Rural Shelby	1,358	1,510	8	11	362	431
Rural St. Clair	802	746	14	14	296	306
Rural Sumter	191	183	8	4	108	83
Rural Talladega	801	852	18	21	362	435
Rural Tallapoosa	192	222	2	8	80	93
Rural Tuscaloosa	1,865	1,796	28	32	610	637

CITY	NUMBER OF CRASHES		PERSONS KILLED		PERSONS INJURED	
	2015	2016	2015	2016	2015	2016
Rural Walker	730	673	14	22	416	329
Rural Washington	150	150	3	3	93	101
Rural Wilcox	115	96	4	3	80	75
Rural Winston	156	143	7	10	81	71
Russellville	243	238	1	0	90	87
Rutledge	10	5	0	0	2	2
Samson	31	40	0	0	14	7
Sand Rock	3	9	0	0	1	6
Sanford	8	4	0	0	3	1
Saraland	535	571	1	0	164	160
Sardis City	45	63	0	1	27	35
Satsuma	65	66	2	0	21	22
Scottsboro	528	583	3	2	153	156
Section	15	20	0	0	4	0
Selma	611	665	1	3	216	259
Sheffield	257	273	0	1	58	87
Shiloh	4	0	0	0	3	0
Shorter	7	0	0	0	3	0
Silas	1	8	0	0	0	3
Siluria	1	1	0	0	0	0
Silverhill	32	45	0	1	10	7
Sipsey	4	5	0	0	2	2
Skyline	14	3	0	0	5	4
Slocomb	35	34	0	0	8	9
Smiths Station	97	58	1	0	31	35
Snead	46	47	2	1	28	19
Somerville	15	22	0	2	8	5
Southside	95	122	2	1	46	46
Spanish Fort	2	5	0	0	3	3
Springville	72	70	0	0	15	10
St. Florian	60	40	2	0	17	12
Steele	7	6	0	0	6	0
Stevenson	60	75	5	2	12	26
Sulligent	23	29	0	0	7	11
Sumiton	104	99	0	0	38	35
Summerdale	73	100	2	2	30	40
Susan Moore	9	7	0	0	1	0
Sweet Water	2	4	0	0	0	4
Sylacauga	360	280	1	0	108	56
Sylvania	37	16	0	0	9	5

CITY	NUMBER OF CRASHES		PERSONS KILLED		PERSONS INJURED	
	2015	2016	2015	2016	2015	2016
Sylvania Springs	0	1	0	0	0	0
Talladega	289	350	1	3	110	134
Talladega Springs	0	0	0	0	0	0
Tallassee	178	190	1	1	75	46
Tarrant City	279	301	0	1	101	88
Taylor	27	31	0	0	11	30
Thomaston	6	7	0	1	2	1
Thomasville	133	128	0	0	53	50
Thorsby	28	35	0	0	6	14
Town Creek	21	16	0	0	9	3
Toxey	0	0	0	0	0	0
Trafford	2	0	0	0	1	0
Triana	4	4	0	0	3	2
Trinity	42	50	0	1	22	10
Troy	742	741	4	0	203	184
Trussville	892	960	1	1	231	212
Tuscaloosa	5,322	5,241	9	12	1,444	1,459
Tuscumbia	293	266	0	4	52	64
Tuskegee	201	202	1	0	78	86
Twin	0	1	0	0	0	0
Union	0	0	0	0	0	0
Union Grove	2	0	0	0	1	0
Union Springs	130	102	0	1	40	34
Uniontown	35	29	0	2	30	23
Valley	285	343	4	3	99	78
Valley Grande	14	10	0	0	6	5
Valley Head	15	14	0	0	1	2
Vance	36	38	0	0	13	26
Vernon	36	44	0	0	6	15
Vestavia Hills	923	964	2	3	127	132
Vina	2	2	1	0	0	3
Vincent	31	24	0	0	13	16
Vinemont	5	14	0	0	3	5
Vredenburgh	0	0	0	0	0	0
Wadley	5	9	0	0	3	6
Waldo	1	4	0	0	0	1
Walnut Grove	17	16	0	0	11	7
Warrior	55	72	0	0	21	24
Waterloo	0	2	0	0	0	0
Waverly	4	2	0	0	3	1

CITY	NUMBER OF CRASHES		PERSONS KILLED		PERSONS INJURED	
	2015	2016	2015	2016	2015	2016
Weaver	36	35	0	0	10	6
Webb	16	24	0	0	3	14
Wedowee	30	45	0	0	10	17
West Blocton	23	30	0	1	11	12
West End	1	0	0	0	0	0
West Jefferson	0	1	0	0	0	0
West Point	11	23	0	0	3	10
Weston	0	1	0	0	0	1
Westover	6	5	0	0	1	2
Wetumpka	477	474	5	4	145	159
Whitehall	6	6	0	0	5	1
Whites Chapel	0	0	0	0	0	0
Wilmer	2	1	1	0	0	0
Wilsonville	17	11	0	0	7	5
Wilton	6	4	0	0	7	1
Winfield	121	96	0	1	39	41
Woodland	10	5	0	0	3	1
Woodstock	50	47	0	0	16	10
Woodville	21	12	0	0	19	10
Yellow Bluff	1	1	0	0	0	1
York	25	31	0	0	3	12
Unknown	0	92	0	0	0	25
TOTAL	147,452	155,907	849	1,089	44,020	47,653



Transforming ALABAMA'S SAFETY CULTURE

In 2016, the Alabama Department of Transportation continued its targeted public information and awareness campaign to educate, inform and persuade motorists to engage in safe driving habits.

The campaign focused on four main initiatives—Distracted Driving, Seat Belt Safety, Speeding, and DUI—but also incorporated Motorcycle Safety, Work Zone Safety, Rail Safety, and Flashing Yellow Arrow campaigns. Following are some examples of the materials developed as part of the State of Alabama Strategic Highway Safety Plan.



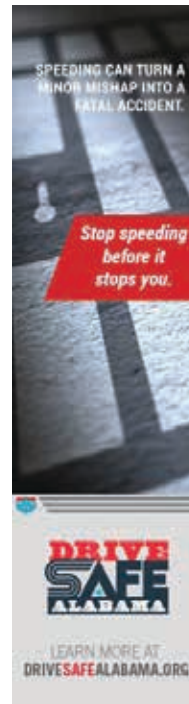
Transit Signage
Seatbelt Safety



Digital Ads
Seatbelt Safety



Digital and Mobile Ads
Distracted Driving

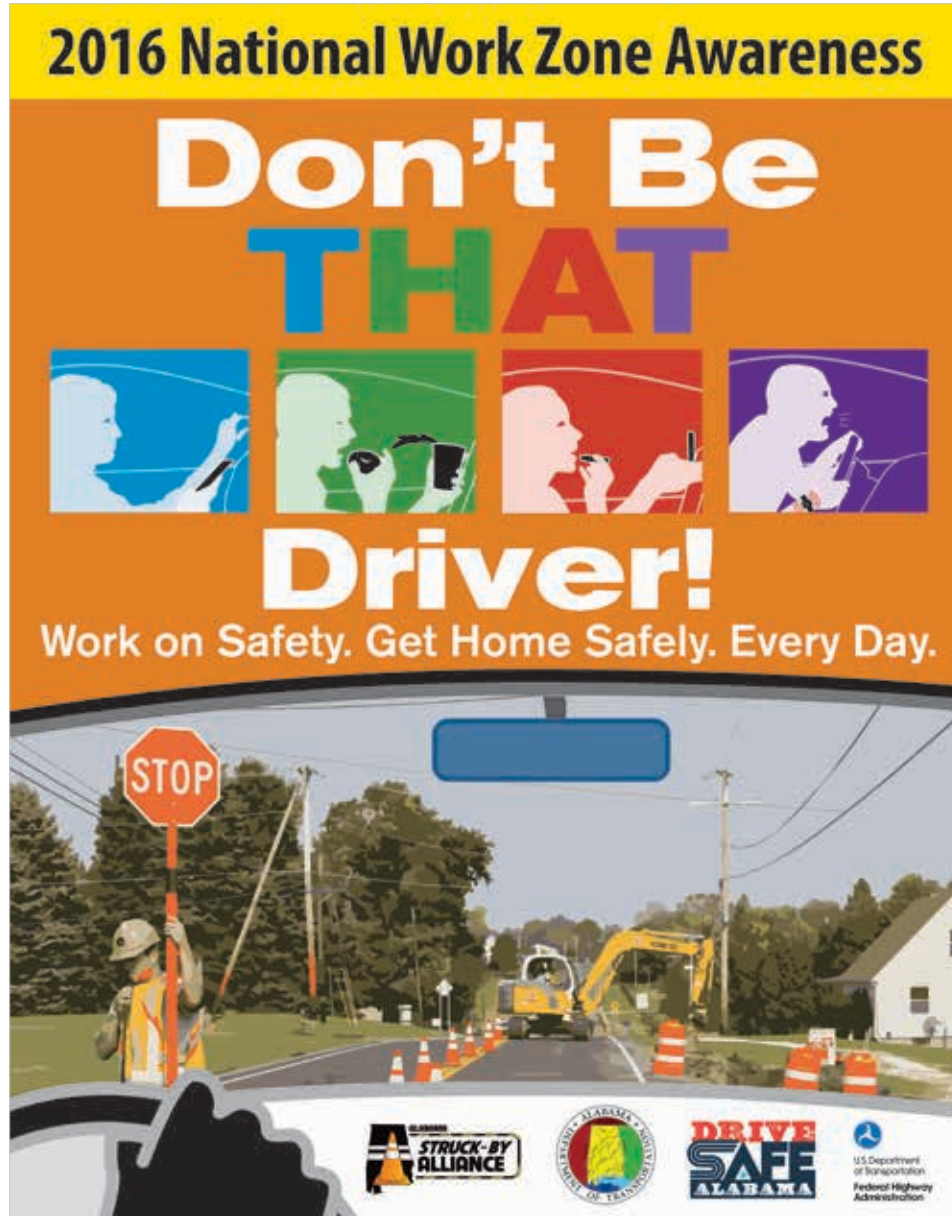


Digital and Mobile Ads
Speeding



Digital and Mobile Ads
DUI





Poster Advertising
Work Zone Safety Campaign



Outdoor Advertising
Work Zone Safety Campaign



ALABAMA DEPARTMENT OF TRANSPORTATION

dot.state.al.us

MEDIA & COMMUNITY RELATIONS BUREAU

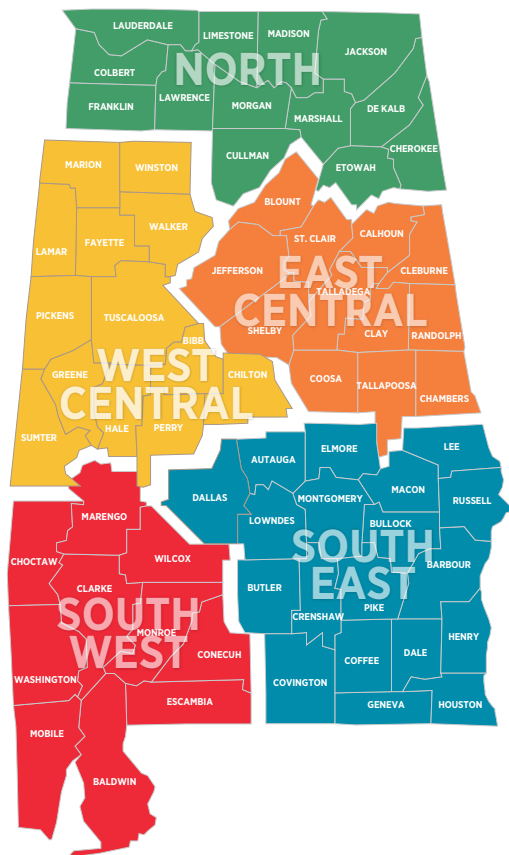
Central Office:
1409 Coliseum Boulevard, Montgomery, Alabama 36110

TONY HARRIS
Bureau Chief &
Government Relations Manager
334.242.6552
harrist@dot.state.al.us

ALLISON GREEN
Marketing &
Communication Specialist
Drive Safe Alabama Coordinator
334.353.6534
greena@dot.state.al.us

AMANDA DEEM
Public Information Officer
334.242.6963
deema@dot.state.al.us

JOSH PHILLIPS
Public Information Officer
334.242.6730
phillipsjo@dot.state.al.us



REGIONAL PUBLIC INFORMATION OFFICES

NORTH REGION
1525 Perimeter Parkway
Huntsville, AL 35086

SETH BURKETT
Public Information Officer
256.505.4964
burkett@dot.state.al.us

SOUTHWEST REGION
1701 I-65 West Service Road North
Mobile, AL 36618

CHEYENNE WEST
Public Information Officer
251.470.8375
westc@dot.state.al.us
Twitter @ALDOTMobileArea

WEST CENTRAL REGION
204 Marina Drive
Tuscaloosa, AL 35406

JOHN MCWILLIAMS
Public Information Officer
205.562.3115
mcwilliamsj@dot.state.al.us

SOUTHEAST REGION
Capitol Commerce Center
100 Capitol Commerce Boulevard
Building B, Suite 210
Montgomery, AL 36117

BRANTLEY KIRK
Public Information Officer
334.353.6862
kirkb@dot.state.al.us

EAST CENTRAL REGION
100 Corporate Parkway, Suite 450
Hoover, AL 35242

LINDA CROCKETT
Public Information Officer
205.327.4973
crockettl@dot.state.al.us



DRIVESAFEALABAMA.ORG





ALABAMA DEPARTMENT OF TRANSPORTATION

www.dot.state.al.us | Contact us at aldotinfo@dot.state.al.us

