

# CRASH 2019 FACTS



ALABAMA DEPARTMENT OF TRANSPORTATION  
[DRIVESAFEALABAMA.ORG](http://DRIVESAFEALABAMA.ORG)



## LETTER FROM THE

# Transportation Director

Providing a safe transportation system is at the core of the mission of the Alabama Department of Transportation. It begins with our pre-construction process, where we plan and design the safest roads and bridges possible. Whether it's planning for new construction, replacing functionally obsolete or structurally deficient bridges, or widening shoulders scored with rumble strips on rural resurfacing projects, we focus on safety.

Analyzing data about crashes is an important part of how ALDOT personnel identify specific opportunities for improving the safety of our transportation system. We then use innovative engineering techniques, perform routine maintenance, and manage funding in a fiscally responsible and priority-based manner to create safer roads.

As you review the data in the 2019 Crash Facts book, I challenge you to consider your personal commitment to safety and the things you can do to help reduce the number of crashes in Alabama. Always follow speed limits; drive sober; buckle up; share the road with motorcycles, bicycles and pedestrians; obey railroad crossing signals; avoid any and all forms of distracted driving; and lead by example by teaching young people safe driving habits.

Wearing a seat belt and making sure that everybody in the vehicle is wearing a seat belt is the single most important safety habit you can adopt. In 2019, the Alabama Legislature amended the seat belt law to require all passengers in a vehicle to wear a seat belt. You will see on page 22 of 2019 Crash Facts that almost 60 percent of people who died in crashes were not wearing a seat belt. Statistics clearly show that seat belts save lives. Violators of Alabama's seat belt laws may be fined and assessed points on their driver licenses. Simply put, there are plenty of good reasons to buckle up.

I hope you will look further into 2019 Crash Facts to find even more important insights into making our roads safe.

John R. Cooper  
Transportation Director  
Alabama Department of Transportation

# 2019 CRASH FACTS Table of Contents

<b>4</b>	<b>Quick Facts</b>
<b>5</b>	<b>Ten-Year Crash Data</b>
<b>6</b>	<b>Fatality Rate Trends</b>
<b>7</b>	<b>Types of Crashes</b>
<b>8</b>	<b>Time Data</b>
<b>10</b>	<b>Involvement by Age and Gender</b>
<b>12</b>	<b>Crash Location</b>
<b>13</b>	<b>Alabama SAYS Summit</b>
<b>14</b>	<b>Crash Environment</b>
<b>15</b>	<b>Holiday Crash Statistics</b>
<b>16</b>	<b>Type of Roadway</b>
<b>17</b>	<b>Alcohol and Drug Involvement</b>
<b>18</b>	<b>Intersection Crashes by County</b>
<b>19</b>	<b>Non-Intersection Crashes by County</b>
<b>20</b>	<b>Driver Contributing Circumstances</b>
<b>21</b>	<b>Motorcycle Crash Statistics</b>
<b>22</b>	<b>Safety Restraint Usage</b>
<b>24</b>	<b>Bicycle Crash Statistics</b>
<b>25</b>	<b>Pedestrian Crash Statistics</b>
<b>26</b>	<b>Train Involved Crash Statistics</b>
<b>27</b>	<b>Work Zone Crash Statistics</b>
<b>28</b>	<b>Truck Crash Statistics</b>
<b>29</b>	<b>Fatalities by County</b>
<b>30</b>	<b>Traffic Crashes by County</b>
<b>35</b>	<b>Comparative County Statistics</b>
<b>37</b>	<b>Comparative City Statistics</b>
<b>44</b>	<b>Transforming Alabama's Safety Culture</b>
<b>47</b>	<b>Media Contact Information</b>

Data analysis for this report is provided by the Center for Advanced Public Safety at The University of Alabama using crash data provided by the Alabama Law Enforcement Agency.





# 2019 Crash Data Quick Facts

	2019 CRASH DATA	2019 VS. 2018
All Crashes	159,102	decreased 0.51%
Injuries	46,383	decreased 2.18%
Fatal Crashes	851	decreased 2.41%
Fatalities	930	decreased 2.41%
Registered Vehicles in Alabama	5,754,006	increased 1.01%
Licensed Drivers in Alabama	4,053,001	increased 0.49%
Vehicle Miles Traveled in Alabama	70,676,045,000	increased 0.74%

Based on 2019 data, typical drivers in Alabama have greater than a **one in three chance of involvement in an injury or fatal crash operating a vehicle over their lifetimes. The probability of any given driver being in a crash of any severity during their lifetimes is greater than 90%.**

In 2019, there were **47 certified fatalities** associated with **distracted driving.**

There were 930 people killed in 851 fatal crashes.

A traffic crash was reported every 3 minutes and 18 seconds.

A person was injured in a traffic crash each 11 minutes and 19 seconds.

A person was killed in a traffic crash every 9 hours and 26 minutes.

For fatal crashes where a restraint was available for use, almost 57 percent of those who died from a vehicle crash were not wearing a seat belt.

Most Alabama crashes (77 percent) occurred in urban areas, but most fatalities (59 percent) occurred in rural areas.

Of all fatal crashes, 8 percent were caused by drivers 19 years or under, and 18 percent were caused by drivers 25 years or under.

For each fatality, there were about 50 injuries.

Of all fatal crashes, 51 percent occurred at night (including dusk and dawn).

There were 114 pedestrian fatalities.

There were 90 fatalities involving motorcycle or moped riders.

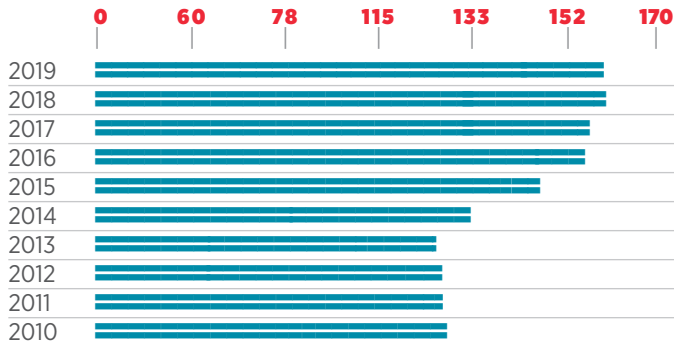
Bicyclists accounted for 6 fatalities.

There were 6 fatalities with train involvement.

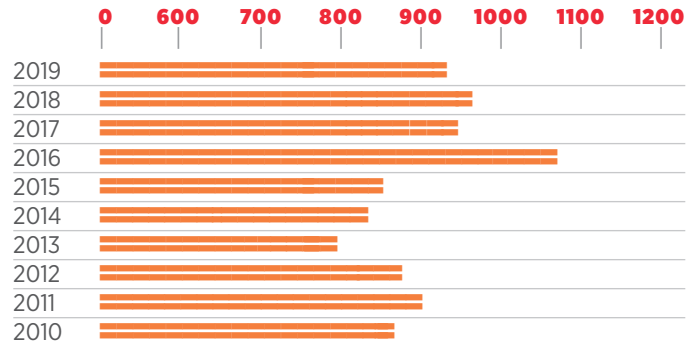
For front seat occupants who are in vehicle crashes, the probability of being killed is 55 times higher for those not wearing safety belts than those who are properly restrained.

# Ten Year Comparison\* CRASH DATA 2010-2019

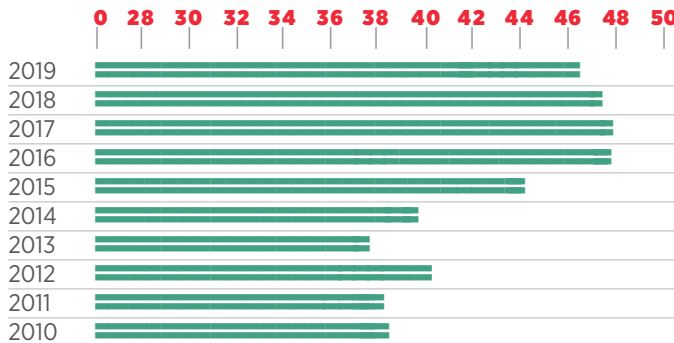
## CRASHES UP 23.91% IN THOUSANDS OF CRASHES



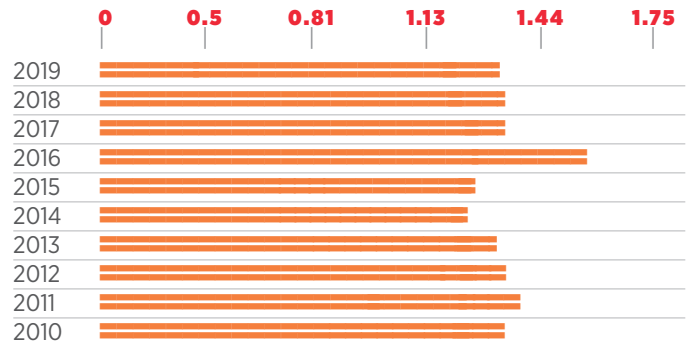
## FATALITIES UP 7.89% IN NUMBER OF FATALITIES



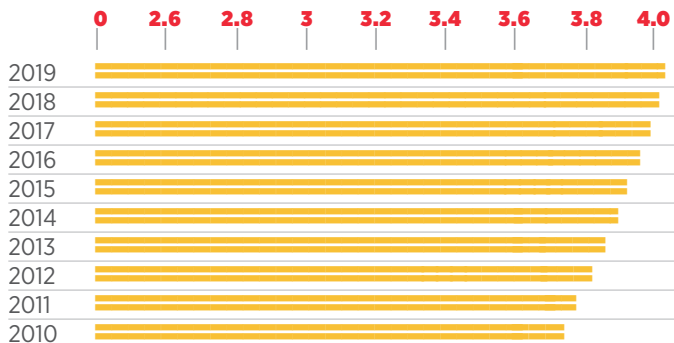
## INJURIES UP 21.10% IN THOUSANDS OF INJURIES



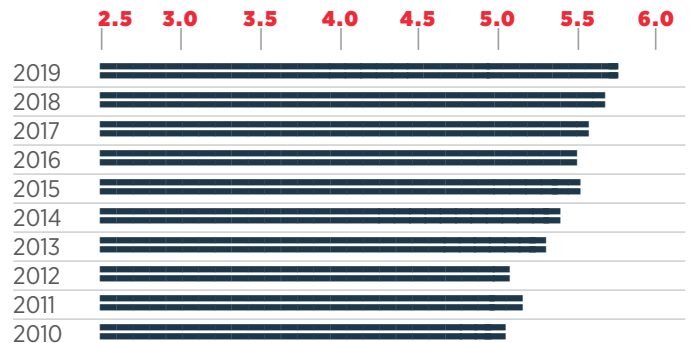
## MILEAGE DEATH RATE DOWN 1.80% IN FATALITIES PER 100 MILLION VEHICLE MILES



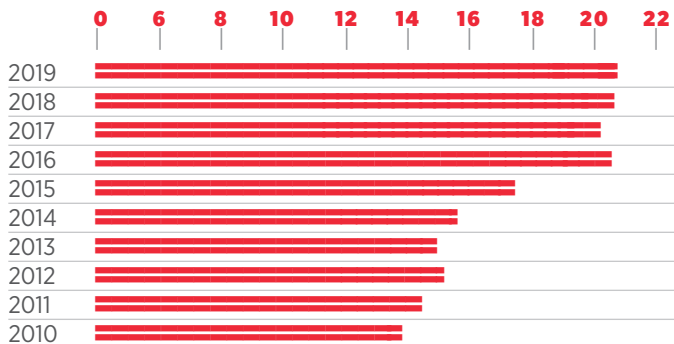
## LICENSED DRIVERS UP 6.38% IN MILLIONS OF DRIVERS



## MOTOR VEHICLE REGISTRATIONS UP 13.72% IN MILLIONS OF VEHICLES



## ECONOMIC LOSS UP 50.36% IN BILLIONS OF DOLLARS



## VEHICLE MILES TRAVELED UP 10.09% IN BILLIONS OF MILES TRAVELED



\*The increase/decrease percentage of change includes the entire 10-year time frame represented.



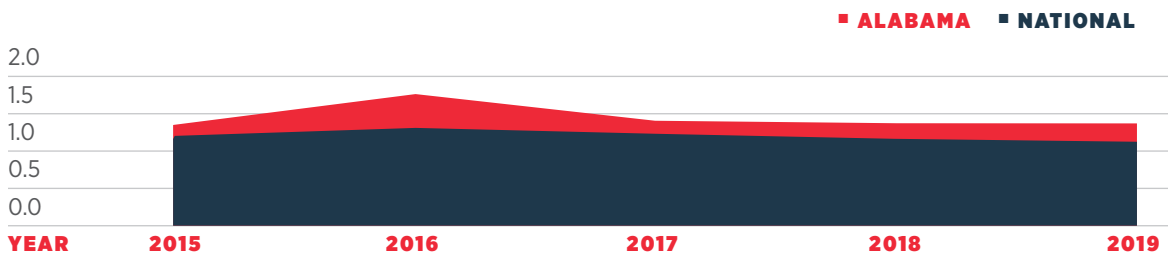
# Fatality Rate **TRENDS**

## CRASH TOTALS AND RATES FOR THE PAST FIVE YEARS

YEAR	TOTAL CRASHES	TOTAL INJURIES	TOTAL FATALITIES	ALABAMA FATALITY RATE (PER HMVM*)	NATIONAL FATALITY RATE (PER HMVM*)
2015	147,452	44,020	850	1.26	1.15
2016	155,907	47,653	1,083	1.56	1.19
2017	156,993	47,771	948	1.34	1.17
2018	159,925	47,419	953	1.34	1.13
2019	159,102	46,383	930	1.32	1.10

\*Hundred Million Vehicle Miles

## FATALITY RATE: STATE VERSUS NATIONAL



# Types OF CRASHES

## FIRST HARMFUL EVENT (ORDERED BY FATALITIES)

EVENT	TOTAL CRASHES	% OF ALL CRASHES	NON-FATAL INJURIES	FATALITIES
Hit Other Vehicle	115,742	72.7%	32,091	433
Hit Fixed Object or Other Object	17,139	10.8%	6,055	262
Hit Pedestrian	613	0.4%	528	50
Overturning	1,424	0.9%	954	41
Hit Parked Vehicle	7,269	4.6%	387	12
Hit Bicyclist	146	0.1%	101	4
Other Non-Collision	341	0.2%	107	4
Hit Animal	3,111	2.0%	283	3
Hit Railway Train	72	0.0%	31	3
All other	13,245	8.3%	3,885	118
<b>TOTAL</b>	<b>159,102</b>	<b>100%</b>	<b>44,422</b>	<b>930</b>

\*Includes only those pedestrian events and train events in the First Harmful Event; for more details, see pedestrian crash statistics on page 25 and train involved crash statistics on page 26.

## VEHICLE TYPE

TYPE	VEHICLES INVOLVED	% OF VEHICLES	0	10%	20%	30%	40%	50%	60%
Passenger Car	151,290	51.1%							
Pickup and SUV	117,462	39.7%							
Van	10,643	3.6%							
Truck	11,243	3.8%							
Motorcycle/Moped	1,708	0.6%							
Other	3,743	1.2%							
<b>TOTAL</b>	<b>296,089</b>	<b>100%</b>							

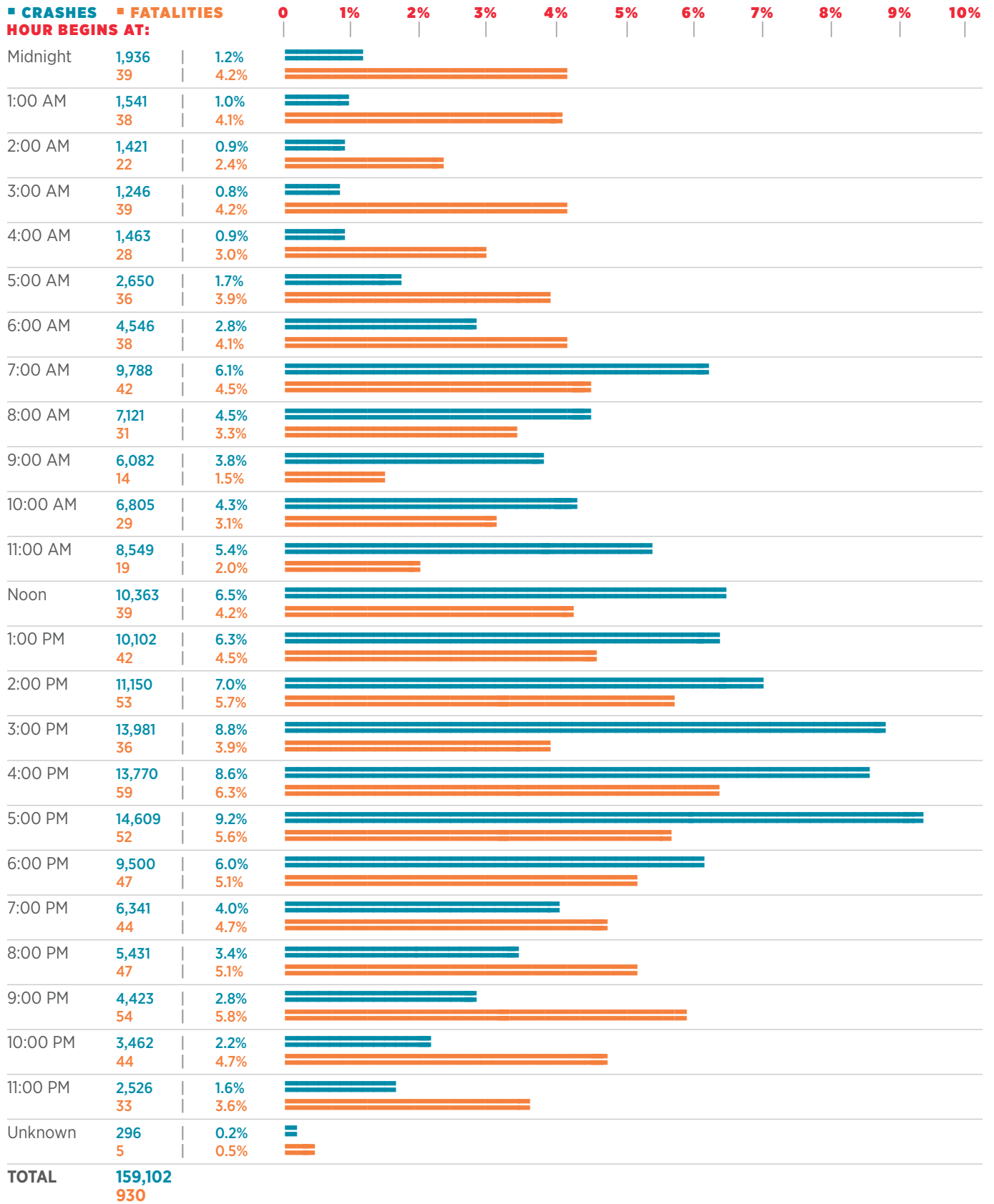
## HAZARDOUS CARGO

CARGO TYPE	CRASHES
Gas/Flammable	164   72.9%
Corrosive	22   9.8%
Explosive	5   2.2%
Radioactive	2   0.9%
Other	32   14.2%
<b>TOTAL</b>	<b>225   100%</b>



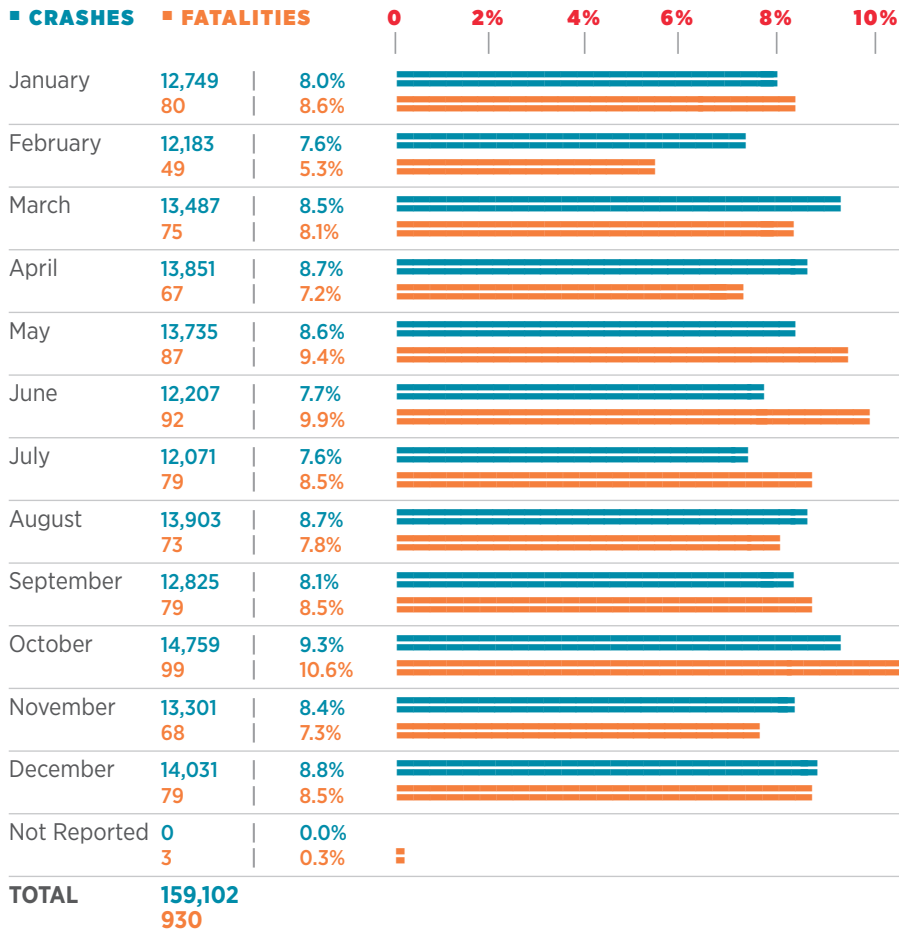
# Time DATA

## TIME OF DAY

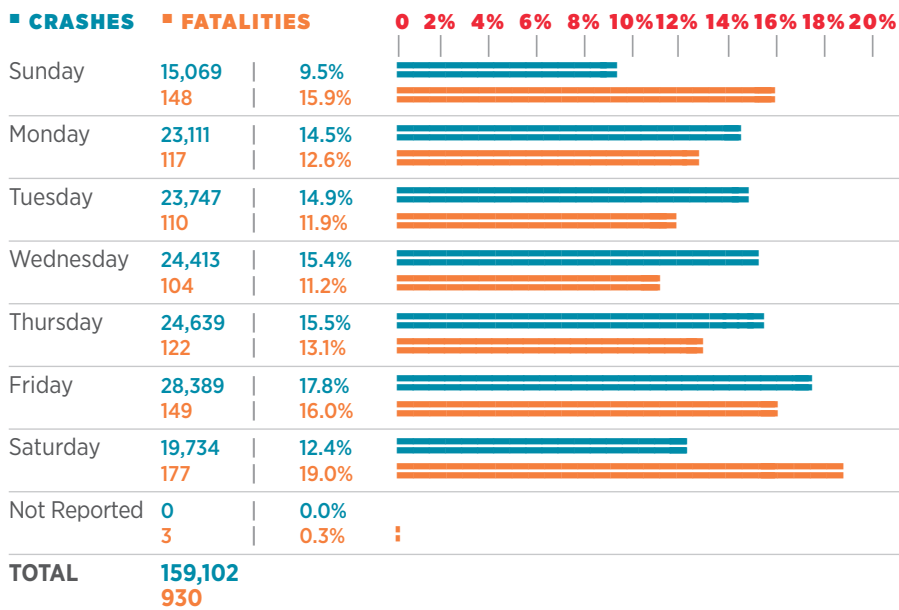




## MONTH OF YEAR



## DAY OF WEEK



THE MOST  
CRASH-PRONE DAY  
OF THE WEEK IS  
**Friday.**

THE MOST  
FATALITY-PRONE  
DAY IS  
**Saturday.**

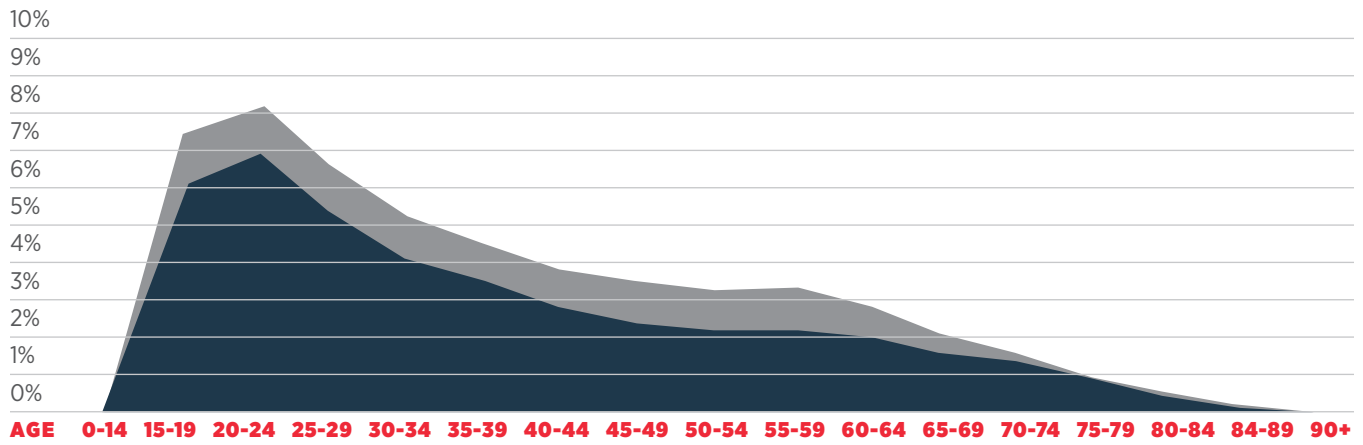
THE MOST  
CRASH-PRONE PERIOD  
OF THE DAY IS  
**3pm-6pm.**



# INVOLVEMENT BY Age and Gender

## PERCENTAGE CAUSAL DRIVERS\* INVOLVED IN ALL TRAFFIC CRASHES BY AGE AND GENDER

■ MALE ■ FEMALE



\*The Causal Driver is the driver of the vehicle that was determined to have caused the traffic crash. Crashes for all vehicle types are included. Each crash has only one causal driver.

## FATALITIES BY AGE

AGE (YEARS)	FATALITIES
0-5	10
6-10	6
11-15	10
16-20	78
21-25	88
26-30	94
31-35	70
36-40	83
41-45	77
46-50	67
51-55	66
56-60	74
61-65	58
66-70	44
71-75	26
76-80	29
81-85	20
86-90	15
91-95	3
96-up	0
Unknown	12
<b>TOTAL</b>	<b>930</b>

## DRIVERS INVOLVED\* IN ALL CRASHES AND FATAL CRASHES BY AGE

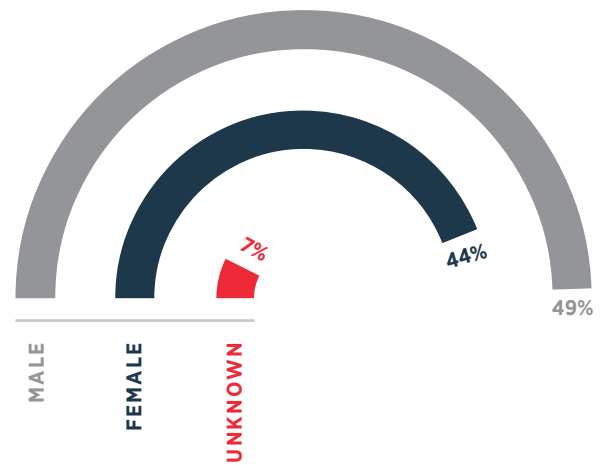
AGE	LICENSED	ALL CRASHES	FATAL CRASHES
0-14	59	131	2
15-19	243,176	28,545	97
20-24	326,701	36,475	121
25-29	344,374	31,700	150
30-34	321,042	27,097	129
35-39	306,262	24,710	114
40-44	293,675	21,344	101
45-49	306,989	20,306	97
50-54	309,532	18,338	87
55-59	336,829	18,450	104
60-64	329,122	15,941	88
65-69	289,960	12,094	67
70-74	246,291	8,878	44
>74	398,989	10,359	75
Unknown	0	21,764	63
<b>TOTAL</b>	<b>4,053,001</b>	<b>296,132</b>	<b>1,339</b>

\*All numbers in this chart include both causal and victim drivers. For example, if there is a four-vehicle crash, all four drivers and their ages are reflected in this chart. For all except single vehicle fatal crashes, there will be more drivers counted than there are crashes.

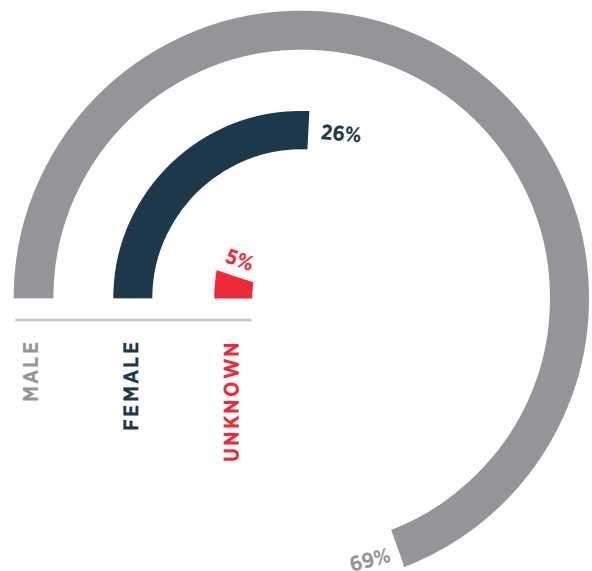
## DRIVERS INVOLVED\* IN ALL CRASHES AND FATAL CRASHES BY GENDER

GENDER	LICENSED	ALL CRASHES	FATAL CRASHES
Male	1,961,847	146,294	930
Female	2,091,154	130,122	347
Unknown	0	19,716	62
<b>TOTAL</b>	<b>4,053,001</b>	<b>296,132</b>	<b>1,339</b>

### GENDER OF DRIVERS INVOLVED IN ALL CRASHES

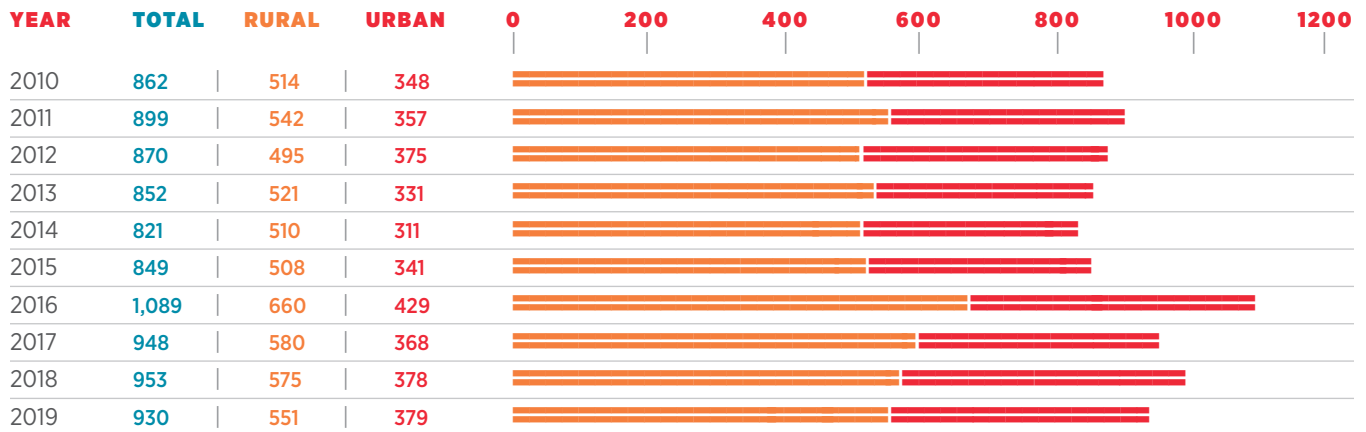


### GENDER OF DRIVERS INVOLVED IN FATAL CRASHES



# CRASH Location

## RURAL VS. URBAN TRAFFIC FATALITIES 10 YEAR DATA



## RURAL LOCALE

LOCALE TYPE	CRASHES	
Open Country	29,592	82.05%
Residential	3,377	9.36%
Shopping or Business	2,655	7.36%
Manufacturing or Industrial	279	0.77%
School	128	0.36%
Playground	2	0.01%
Other	34	0.09%
<b>TOTAL</b>	<b>36,067</b>	

## URBAN LOCALE

LOCALE TYPE	CRASHES	
Shopping or Business	71,484	58.10%
Residential	29,245	23.77%
Open Country	15,830	12.86%
Manufacturing or Industrial	2,640	2.15%
School	2,108	1.71%
Playground	46	0.04%
Other	1,682	1.37%
<b>TOTAL</b>	<b>123,035</b>	

## CRASH LOCATION

LOCATION	CRASHES	
On Roadway	128,465	80.74%
Off Roadway	20,305	12.76%
Intersection	2,704	1.70%
Median	1,702	1.07%
Driveway	29	0.02%
Other	5,897	3.71%
<b>TOTAL</b>	<b>159,102</b>	

## CAUSAL DRIVER'S RESIDENCE

RESIDENCE WITHIN 25 MILES	
Yes	65.98%
No	19.99%
Unknown	14.03%

**MOST CRASHES OCCUR**  
**within 25**  
**miles of**  
**THE CAUSAL DRIVER'S**  
**home.**

The number of **RURAL** fatalities decreased **4.17%** from 2018 to 2019 and **increased 7.20%** from 2010 to 2019.

The number of **URBAN** fatalities increased **0.26%** from 2018 to 2019 and **increased 8.91%** from 2010 to 2019.

# ALABAMA SAYS Summit



Protecting Alabama's youth and the safety of our communities was the purpose that led the Alabama Department of Transportation to join the together with the Alabama Alcohol and Beverage Control Board and other organizations from around the state to organize the first Alabama Substance Abuse Youth Summit (SAYS). Alabama SAYS brought together 300 counselors, educators, medical practitioners and others who advocate for youth to discuss trends, strategies and long-term solutions to the problems of underage drinking and substance abuse. The leading cause of death for U.S. teens is motor vehicle crashes, and impairment by alcohol or drugs is a contributing factor in some of those crashes.

Alabama SAYS attendees heard from subject matter experts, including:

**Dr. Bob Brewer**  
Head of the Centers for Disease Control's alcohol program

**Jim VanHecke**  
Director of TalkitOutNC.org, North Carolina's anti-underage drinking program

**Dr. Eric Mackey**  
State Superintendent of Education

**Dr. Shannon Murphy**  
a Birmingham pediatrician and recognized expert in child development

The Alabama SAYS summit took place at the Renaissance Montgomery Convention Center May 1, 2019.



# CRASH Environment

## TRAFFIC CONTROL

CONTROL TYPE	CRASHES		FATALITIES	
No Control Present	75,843	47.67%	486	52.26%
No Passing Zone	11,676	7.34%	230	24.73%
Stop Sign	14,177	8.91%	72	7.74%
Traffic Signal	37,644	23.66%	60	6.45%
Railroad Device	175	0.11%	1	0.11%
Yield Sign	3,766	2.37%	0	0.00%
Other	3,721	2.34%	52	5.59%
Not Stated	12,100	7.60%	29	3.12%
<b>TOTAL</b>	<b>159,102</b>		<b>930</b>	

## LIGHT CONDITION

CONDITION	CRASHES		FATALITIES	
Day	114,021	71.66%	429	46.13%
Dark	14,988	9.42%	290	31.18%
Streetlights	21,375	13.44%	149	16.02%
Dusk	4,849	3.05%	28	3.01%
Dawn	2,246	1.41%	26	2.80%
Other/Unknown/NA	1,623	1.02%	8	0.86%
<b>TOTAL</b>	<b>159,102</b>		<b>930</b>	

## ROAD CURVATURE AND GRADE

CURVE/GRADE	CRASHES		FATALITIES	
Level	108,150	67.98%	463	49.78%
Curve on Hill	8,147	5.12%	138	14.84%
Level Curve	7,371	4.63%	111	11.93%
Downgrade	12,701	7.98%	95	10.22%
Upgrade	10,005	6.29%	73	7.85%
Hillcrest or Sag	1,195	0.75%	26	2.80%
Other/Unknown	11,533	7.25%	24	2.58%
<b>TOTAL</b>	<b>159,102</b>		<b>930</b>	

## NUMBER OF LANES

LANES	CRASHES		FATALITIES	
Two	67,915	42.68%	520	55.91%
Four	44,677	28.08%	295	31.72%
Six or More	15,984	10.05%	48	5.16%
Three	8,291	5.21%	20	2.15%
Five	6,217	3.91%	13	1.40%
One	3,625	2.28%	10	1.08%
Not Stated	12,393	7.79%	24	2.58%
<b>TOTAL</b>	<b>159,102</b>		<b>930</b>	

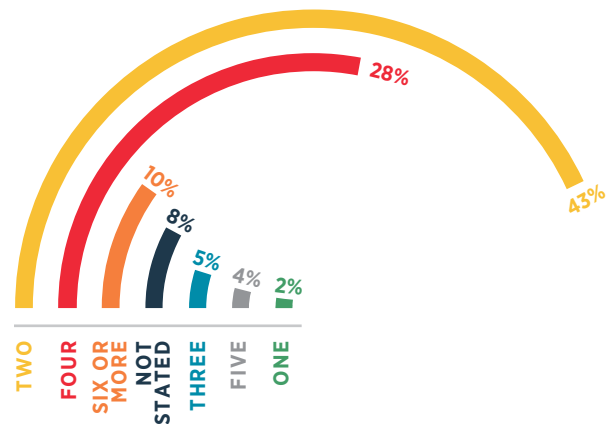
## ROAD CONDITION

CONDITION	CRASHES		FATALITIES	
Dry	120,205	75.55%	772	83.01%
Wet	26,922	16.92%	131	14.08%
Muddy	65	0.04%	1	0.11%
Icy/Slushy	245	0.16%	1	0.11%
Other/Unknown	11,665	7.33%	25	2.69%
<b>TOTAL</b>	<b>159,102</b>		<b>930</b>	

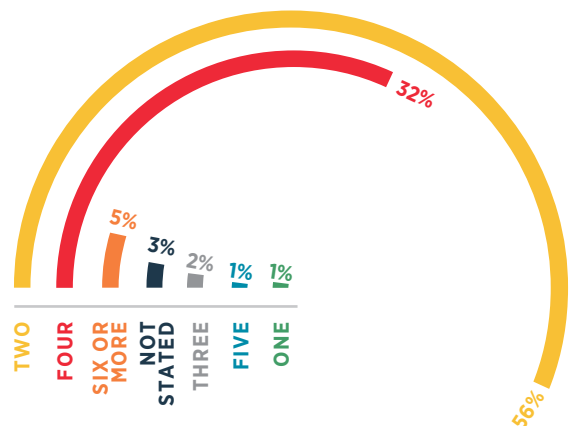
## WEATHER

CONDITION	CRASHES		FATALITIES	
Clear	109,671	68.93%	654	70.32%
Cloudy	26,614	16.73%	165	17.74%
Rain	21,503	13.52%	101	10.86%
Fog	627	0.39%	5	0.54%
Snow/Sleet	135	0.08%	0	0.00%
Other	552	0.35%	5	0.54%
<b>TOTAL</b>	<b>159,102</b>		<b>930</b>	

## CRASHES PER NUMBER OF LANES



## FATALITIES PER NUMBER OF LANES



# Holiday CRASH STATISTICS

## 2018 VS. 2019

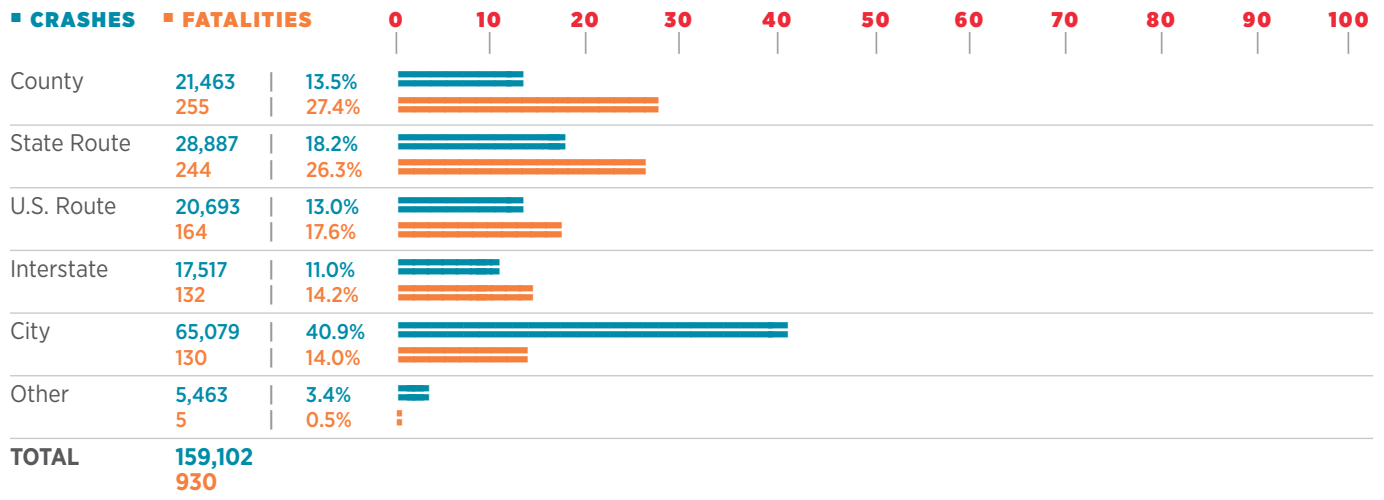
HOLIDAY	YEAR	FATALITIES	PERIOD	0	2	4	6	8	10	12	14	16	18
New Year	2018	9	6 pm, Fri., December 29, 2017 until 11:59 pm, Tue., January 2, 2018 (102 hrs)										
	2019	9	6 pm, Sun., December 30, 2018 until 11:59 pm, Wed., January 2, 2019 (78 hrs)										
Memorial Day	2018	11	6 pm, Fri., May 25, 2018 until 11:59 pm, Mon., May 28, 2018 (78 hrs)										
	2019	11	6 pm, Fri., May 24, 2019 until 11:59 pm, Mon., May 27, 2019 (78 hrs)										
July 4th	2018	8	6 pm, Sun., July 1, 2018 until 11:59 pm, Wed., July 4, 2018 (78 hrs)										
	2019	6	6 pm, Wed., July 3, 2019 until 11:59 pm, Thur., July 4, 2019 (30 hrs)										
Labor Day	2018	7	6 pm, Fri., August 31, 2018 until 11:59 pm, Mon., September 3, 2018 (78 hrs)										
	2019	7	6 pm, Fri., August 30, 2019 until 11:59 pm, Mon., September 2, 2019 (78 hrs)										
Thanksgiving	2018	9	6 pm, Wed., November 21, 2018 until 11:59 pm, Sun., November 25, 2018 (102 hrs)										
	2019	15	6 pm, Wed., November 27, 2019 until 11:59 pm, Sun., December 1, 2019 (102 hrs)										
Christmas	2018	9	6 pm, Sat., December 22, 2018 until 11:59 pm, Wed., December 26, 2018 (102 hrs)										
	2019	19	6 pm, Sun., December 22, 2019 until 11:59 pm, Thur., December 26, 2019 (102 hrs)										

\*Note that the hours for each holiday period may vary from one year to the other.

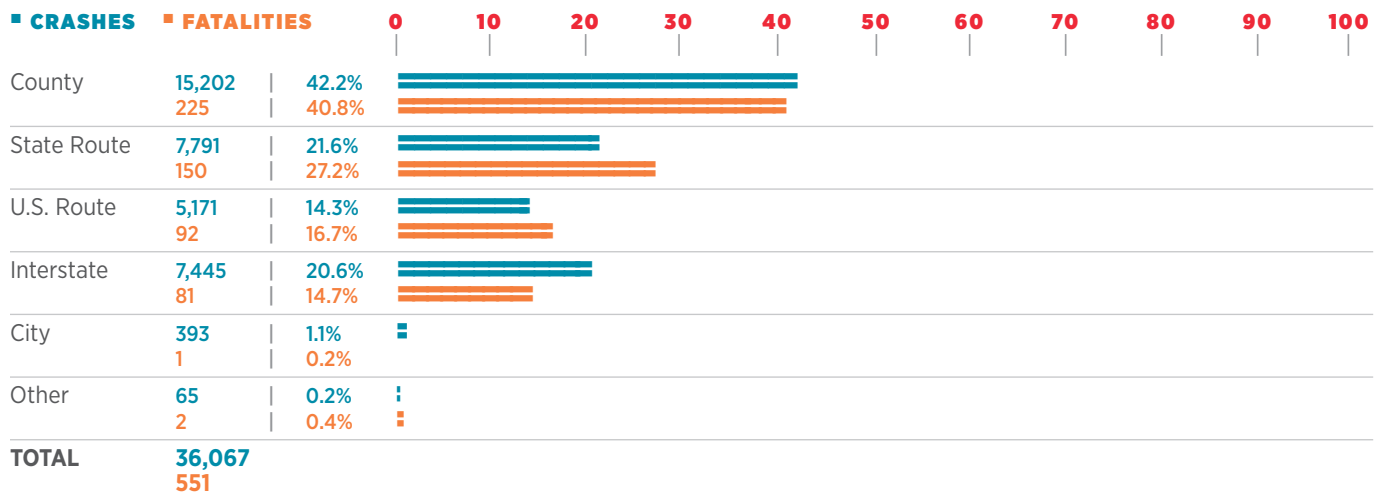


# TYPE OF Roadway

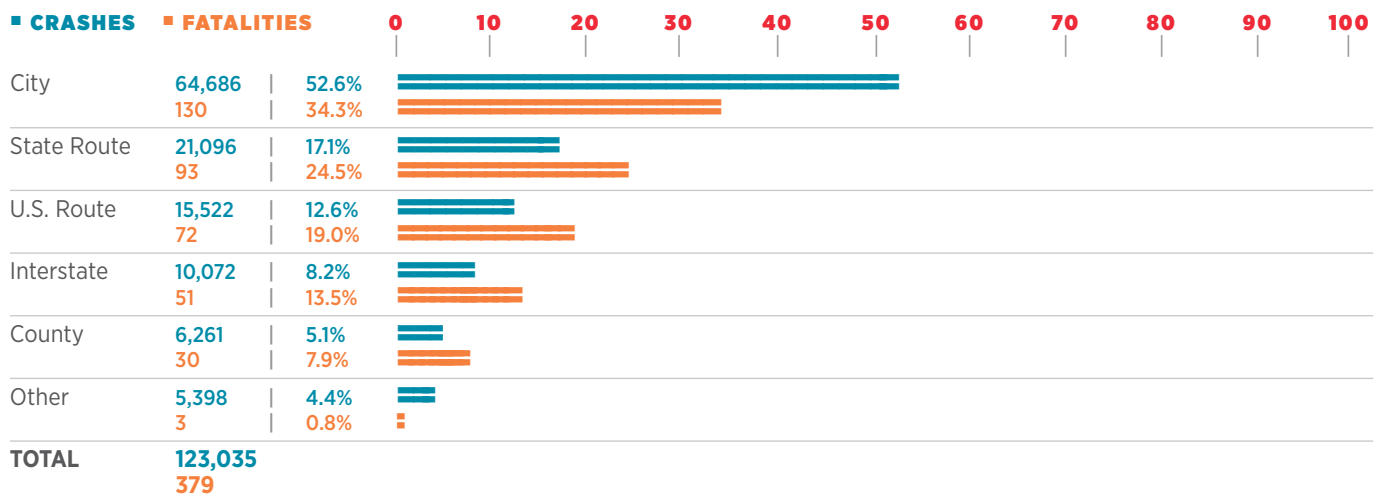
## TOTAL FOR STATE



## RURAL AREAS



## URBAN AREAS





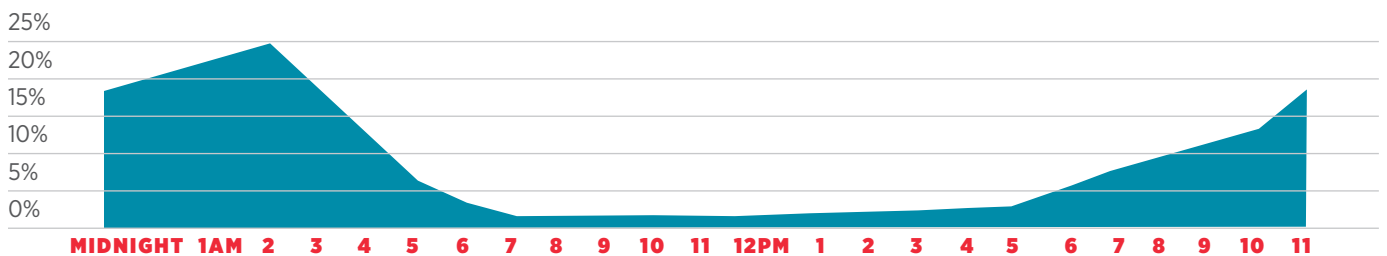
# Alcohol and Drug INVOLVEMENT

## DRIVERS SUSPECTED OF ALCOHOL OR DRUG IMPAIRMENT

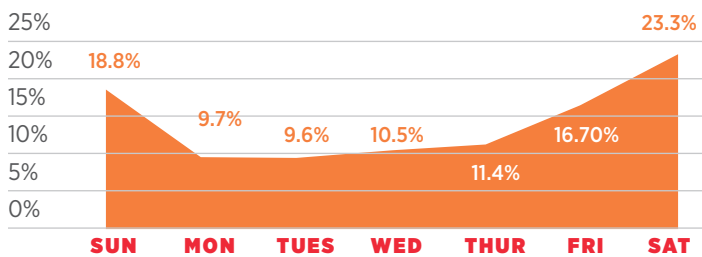
AGE	ALL*	MALE	FEMALE	UNKNOWN	0	100	200	300	400	500	600	700	800	900
0-14	0	0	0	0										
15-19	250	198	51	1										
20-24	775	585	188	2										
25-29	809	601	204	4										
30-34	668	476	191	1										
35-39	604	431	173	0										
40-44	487	322	165	0										
45-49	394	262	131	1										
50-54	392	283	108	1										
55-59	340	257	83	0										
60-64	225	182	43	0										
65-69	125	106	19	0										
70-74	51	41	10	0										
75-over	26	22	4	0										
Unknown	117	34	7	76										
<b>TOTAL</b>	<b>5,263</b>	<b>3,800</b>	<b>1,377</b>	<b>86</b>										

\*All causal drivers suspected of alcohol or drug impairment.

## IMPAIRED DRIVING CRASHES BY TIME



## IMPAIRED DRIVING CRASHES BY DAY



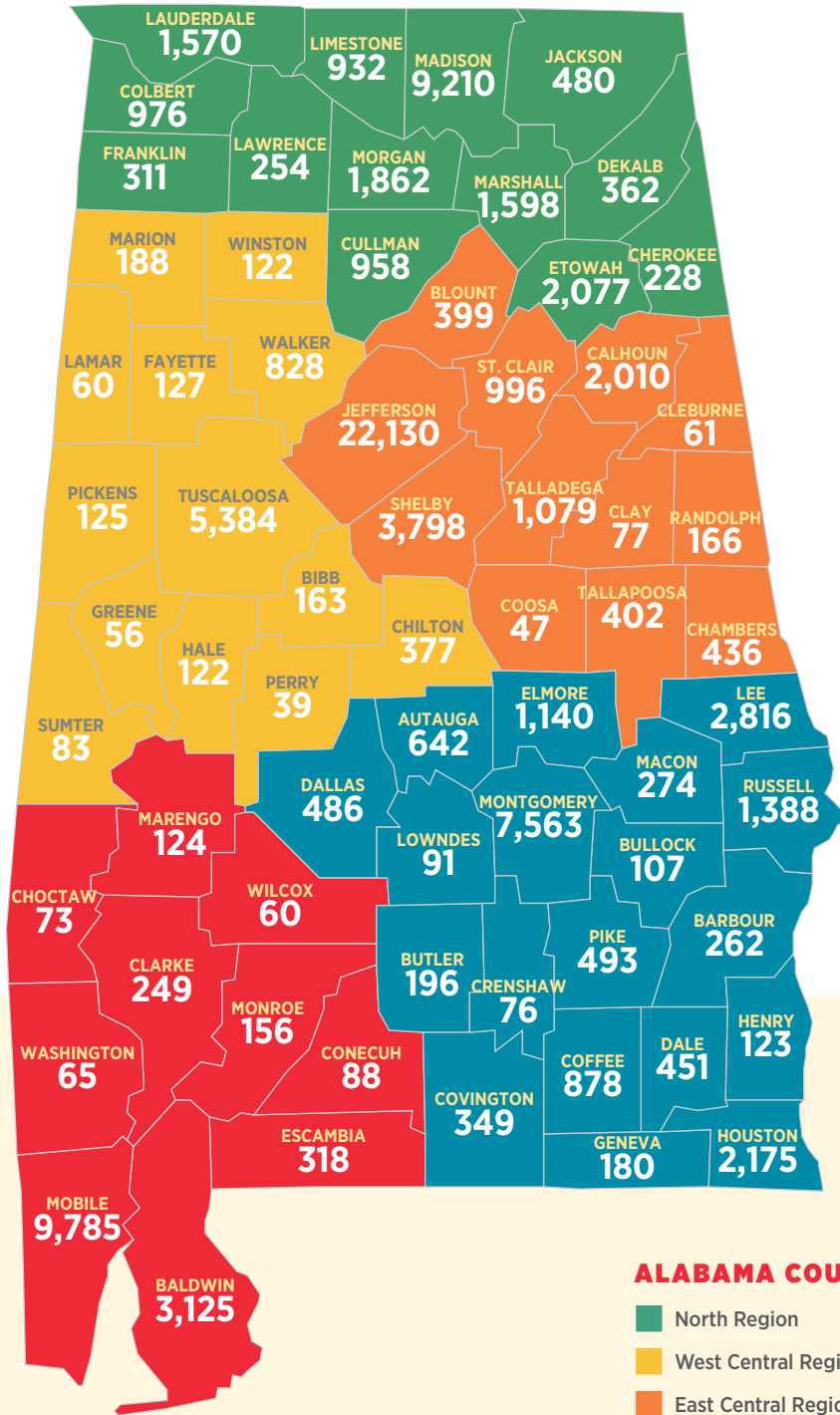
On average, **less than 1 percent of crashes end in a fatality**. However, for impaired driving crashes, the probability is much greater. The proportion of **fatality crashes involving impairment (3.3 percent) is 7.62 times that of crashes in general (0.4 percent)**, as reported in 2019.

There were **210 people** who died in **5,524 crashes** with **suspected alcohol or drug impairment**.



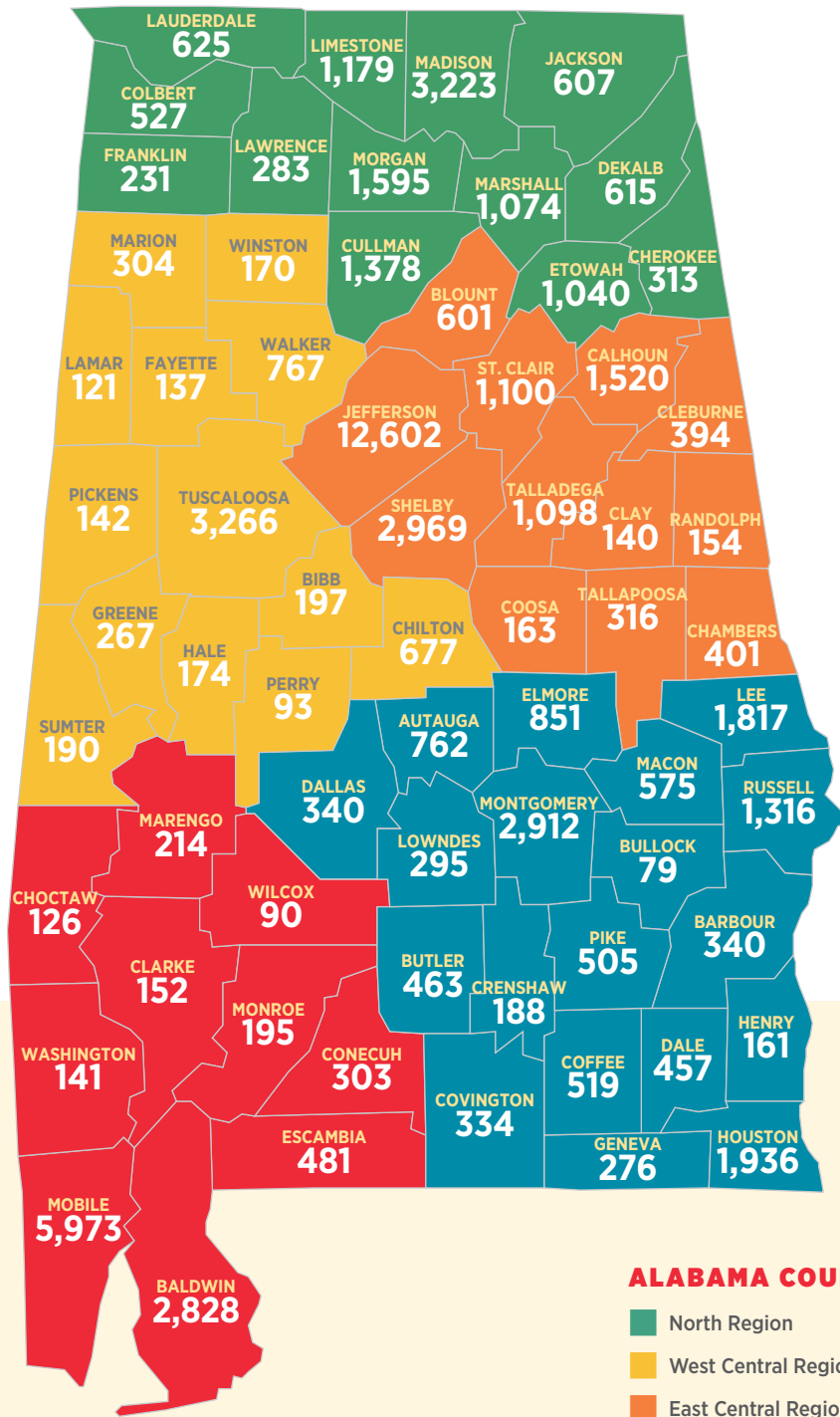
# Intersection **CRASHES BY COUNTY**

**TOTAL INTERSECTION-RELATED CRASHES 93,826**



# Non-Intersection **CRASHES BY COUNTY**

**TOTAL NON-INTERSECTION-RELATED CRASHES 65,276**



# THE Driver

## DRIVER CONTRIBUTING CIRCUMSTANCES WITH PERCENTAGE OF FATAL CRASHES TO ALL CRASHES

CIRCUMSTANCE	ALL CRASHES	FATAL CRASHES	0	0.5%	1%	1.5%	2%	2.5%	3%	3.5%	4%	4.5%	5%
Speeding	7,778	103											
Failed to Yield Right of Way	25,124	98											
Driving Under the Influence	4,051	91											
Improper Lane Change/Use	14,276	70											
Ran Off Road	3,312	54											
Unseen Object/Person/Vehicle	10,732	44											
Failure to Heed Sign/Signal/Officer	6,280	36											
Swerved to Avoid Vehicle/Object	7,253	32											
Wrong Side of Road	709	31											
Fatigued/Asleep	2,652	18											
Tailgating	21,585	5											
Misjudged Stopping Distance	14,188	3											
All Other	41,162	266											
<b>TOTAL</b>	<b>159,102</b>	<b>851</b>											

There may be multiple contributing circumstances in each crash. The table above shows the primary cause determined by the officer reporting the crash.

# Motorcycle **CRASH STATISTICS**

## TEN YEAR DATA

YEAR	MOTORCYCLISTS	INJURIES	FATALITIES	0	500	1,000	1,500	2,000	2,500
2010	1,729	1,319	86						
2011	1,925	1,438	97						
2012	1,912	1,477	92						
2013	1,583	1,173	76						
2014	1,650	1,251	64						
2015	1,601	1,254	74						
2016	1,828	1,297	114						
2017	1,918	1,222	79						
2018	1,859	1,262	83						
2019	1,867	1,213	90						

## MOTORCYCLE INVOLVED CRASHES BY AGE INCLUDES MOTOR SCOOTERS AND MOPEDS

AGE	CRASHES	INJURIES	FATALITIES
0-14	15	11	0
15-19	90	63	4
20-24	235	160	6
25-29	239	160	13
30-34	201	142	15
35-39	171	107	6
40-44	153	110	9
45-49	159	101	5
50-54	171	104	13
55-59	164	112	8
60-64	108	71	6
65-69	64	44	2
70-74	32	17	3
75-over	8	4	0
Unknown	57	7	0
<b>TOTAL</b>	<b>1,867</b>	<b>1,213</b>	<b>90</b>

**64% of all fatal motorcycle crashes were caused by the motorcyclist.**



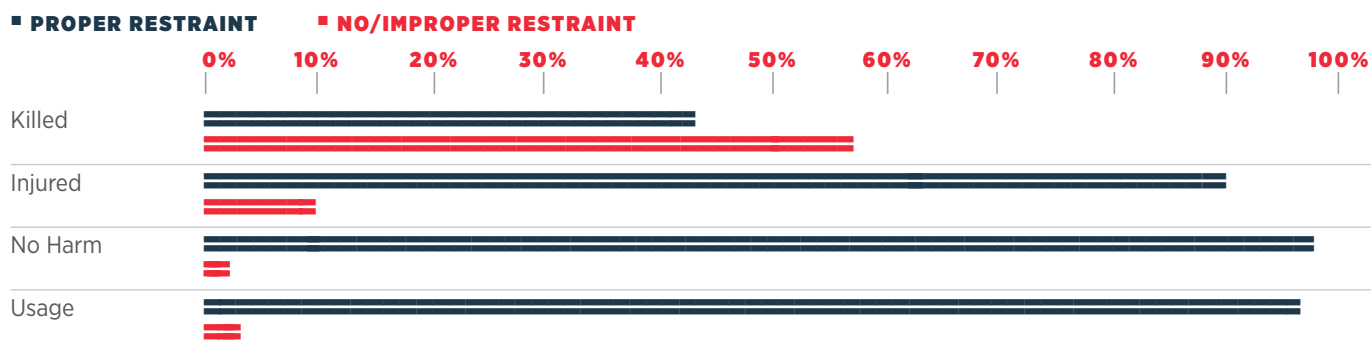
# Safety Restraint **USAGE**

## SAFETY RESTRAINT USAGE

RESTRAINT USED	SEVERITY	DRIVER		FRONT SEAT PASSENGER		BACK SEAT PASSENGER		TOTALS	
Wearing Lap and Shoulder Belts	KILLED	222	0.10%	36	0.10%	7	0.00%	265	0.10%
	INJURED	27,212	10.90%	5,718	14.10%	1,890	11.60%	34,820	11.40%
	NO HARM	222,248	89.00%	34,740	85.80%	14,468	88.40%	271,456	88.50%
	SUBTOTAL	249,682	100%	40,494	100%	16,365	100%	306,541	100%
Wearing Lap Belt Only	KILLED	0	0.00%	0	0.00%	2	0.50%	2	0.10%
	INJURED	77	9.60%	35	14.30%	51	12.70%	163	11.30%
	NO HARM	721	90.40%	209	85.70%	348	86.80%	1,278	88.60%
	SUBTOTAL	798	100%	244	100%	401	100%	1,443	100%
Wearing Shoulder Belt Only	KILLED	0	0.00%	0	0.00%	0	0.00%	0	0.00%
	INJURED	92	8.60%	14	10.80%	10	14.90%	116	5.60%
	NO HARM	973	91.40%	115	89.20%	57	85.10%	1,145	94.40%
	SUBTOTAL	1,065	100%	129	100%	67	100%	1,261	100%
None Used	KILLED	286	5.20%	44	3.60%	21	2.20%	351	7.20%
	INJURED	2,596	47.20%	686	56.10%	412	43.20%	3,694	18.40%
	NO HARM	2,617	47.60%	492	40.30%	521	54.60%	3,630	74.40%
	SUBTOTAL	5,499	100%	1,222	100%	954	100%	7,675	100%
Unknown	KILLED	51	0.40%	8	0.50%	1	0.10%	60	0.40%
	INJURED	1,771	13.10%	361	23.70%	176	22.00%	2,308	8.00%
	NO HARM	11,730	86.50%	1,157	75.80%	622	77.90%	13,509	91.60%
	SUBTOTAL	13,552	100%	1,526	100%	799	100%	15,877	100%

\*Seat belt use for non-fatal injured passengers may be over-estimated because reporting officers have no way to make a direct observation. Additionally, 60 fatalities had unknown restraint use.

## PERCENTAGE OF OCCUPANTS INVOLVED IN CRASHES



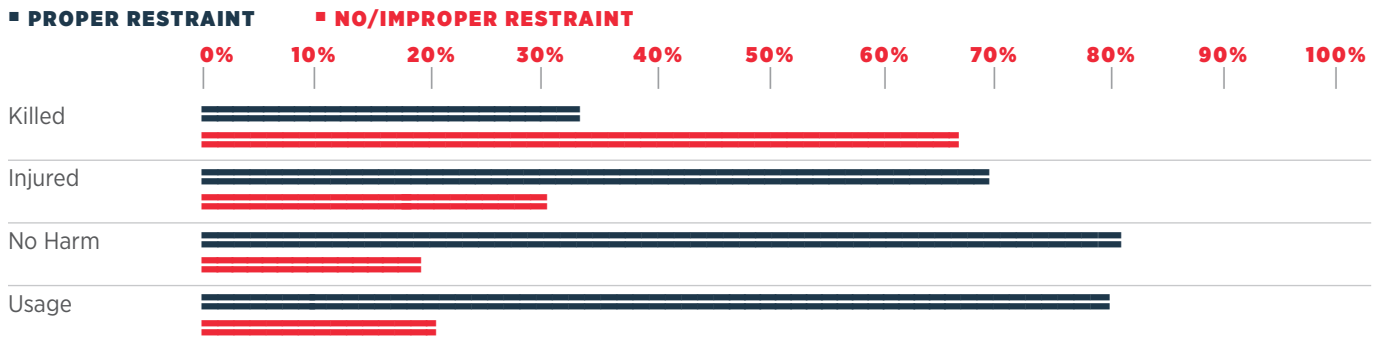
According to the crash reports, overall only **3.3 percent of people involved in crashes were not using safety restraints**; however, **over 57 percent of all fatalities were not restrained.**

In contrast, **97.8 percent of people involved in crashes but not harmed** were reported to have been **wearing their seat belts.**

## CHILD RESTRAINT USAGE (UNDER 6 YEARS OLD)

RESTRAINT USED	SEVERITY	FRONT SEAT PASSENGER		BACK SEAT PASSENGER		TOTALS	
		Count	Percentage	Count	Percentage	Count	Percentage
Child Restraint Used	KILLED	0	0.00%	3	0.00%	3	0.00%
	INJURED	23	9.40%	639	7.30%	662	4.90%
	NO HARM	222	90.60%	8,153	92.70%	8,375	95.10%
	SUBTOTAL	245	100%	8,795	100%	9,040	100%
Child Restraint Used Improperly	KILLED	0	0.00%	2	0.10%	2	0.10%
	INJURED	31	13.20%	208	10.90%	239	6.50%
	NO HARM	204	86.80%	1,702	89.00%	1,906	93.40%
	SUBTOTAL	235	100%	1,912	100%	2,147	100%
None Used	KILLED	1	3.50%	3	2.60%	4	3.80%
	INJURED	11	37.90%	40	35.10%	51	12.40%
	NO HARM	17	58.60%	71	62.30%	88	83.80%
	SUBTOTAL	29	100%	114	100%	143	100%
Unknown	KILLED	0	0.00%	0	0.00%	0	0.00%
	INJURED	1	4.20%	42	16.10%	43	11.00%
	NO HARM	23	95.80%	219	83.90%	242	89.00%
	SUBTOTAL	24	100%	261	100%	285	100%

## PERCENTAGE OF CHILD PASSENGERS INVOLVED IN CRASHES



According to the crash reports, overall, **over 20 percent of children involved in crashes were not in a child restraint or were improperly restrained.**

**Over 80 percent of children involved in crashes but not harmed were reported to have been protected by child restraints.**



# Bicycle CRASH STATISTICS

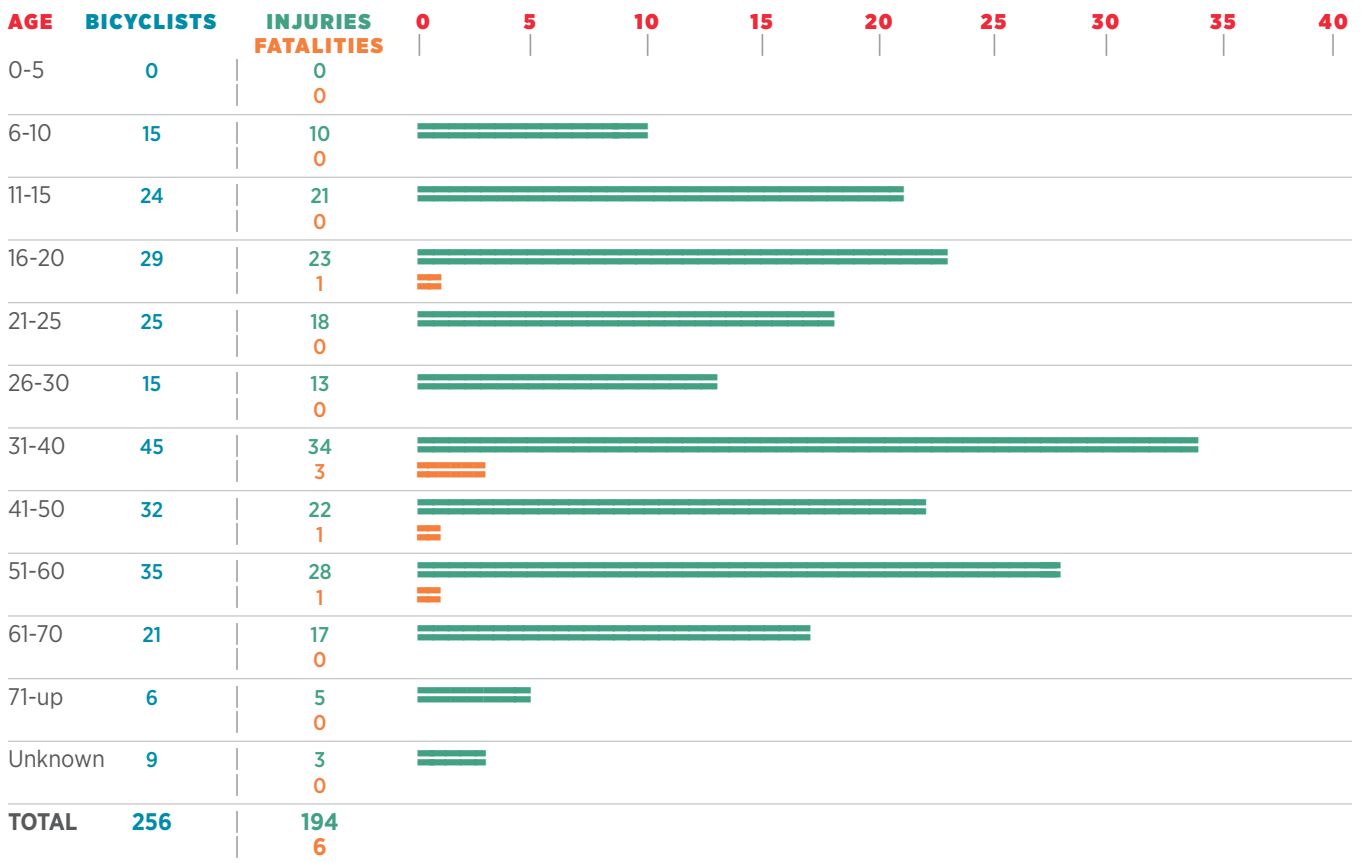
## TEN YEAR DATA

YEAR	BICYCLISTS	INJURIES	FATALITIES
2010	232	169	5
2011	280	203	5
2012	278	225	9
2013	264	192	6
2014	203	195	8
2015	260	185	9
2016	290	214	4
2017	299	212	6
2018	277	209	9
2019	256	194	6

In 2019, about **43%** of all bicycle crashes were caused by the bicyclist.

**12%** of all bicycle crashes occur on rural routes, and **88%** of all bicycle crashes occur in urban streets.

## BICYCLISTS INVOLVED IN CRASHES BY AGE





# Pedestrian CRASH STATISTICS

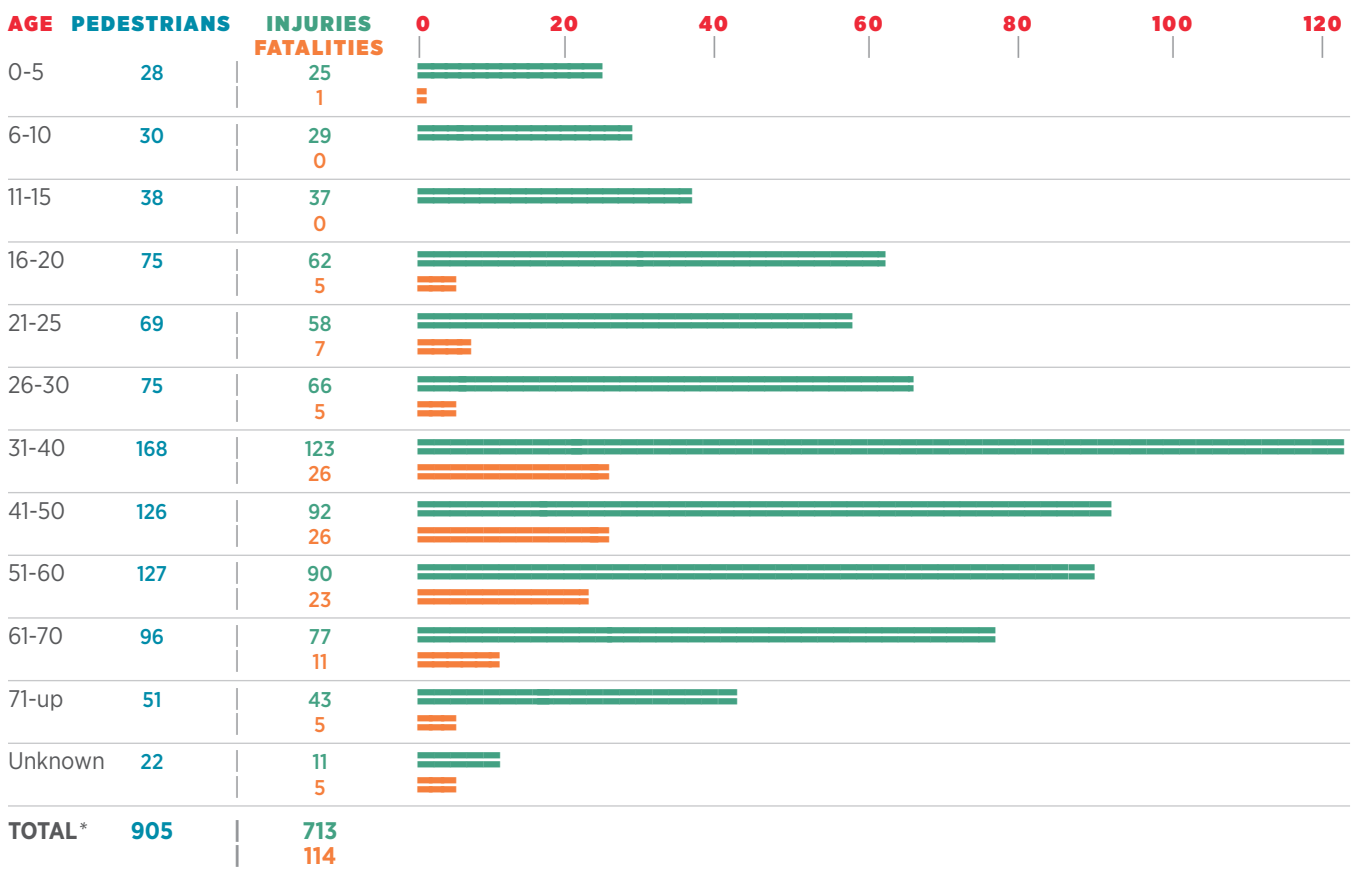
## TEN YEAR DATA

YEAR	PEDESTRIANS	INJURIES	FATALITIES
2010	724	578	63
2011	741	589	84
2012	798	651	80
2013	757	639	57
2014	818	623	95
2015	834	656	96
2016	932	724	122
2017	882	706	113
2018	861	691	106
2019	905	713	114

In 2019, **71 percent** of all fatal pedestrian crashes were caused by the pedestrian.

**Pedestrian fatalities** have **increased 81 percent** since 2010, which traffic safety professionals attribute largely to **distracted walking** with **electronic devices**.

## PEDESTRIANS INVOLVED BY AGE AND SEVERITY



\*Total number of pedestrians involved.



# Train INVOLVED CRASH STATISTICS

## TEN YEAR DATA



## RAILROAD CRASHES

INJURY SEVERITY	TOTAL
Injuries	36
Fatalities	6
Crashes	85

THE NUMBER OF RAILROAD  
**injuries increased** AND  
**fatalities decreased**  
 IN 2019.

**Driver behavior issues** include ignoring flashing lights or other active warning devices, passing through barrier gates, and driving around already lowered gates/failure to observe passive warning devices.

According to NHTSA, **a motorist is almost 20 times more likely to die in a crash involving a train** than in a collision involving another motor vehicle.

# Work Zone CRASH STATISTICS

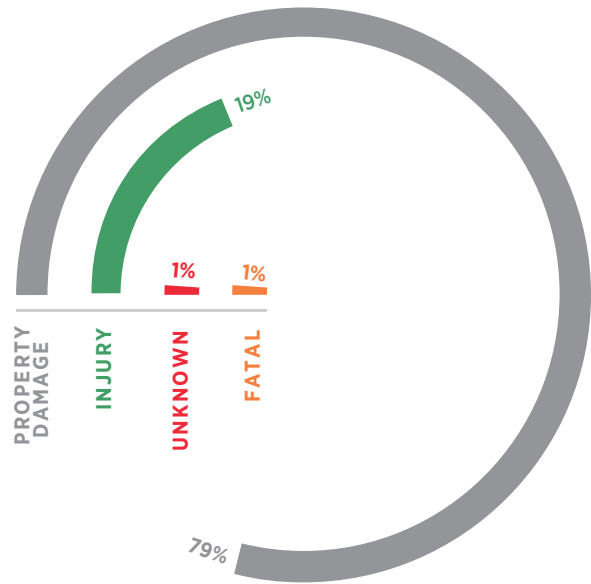
## TEN YEAR DATA

YEAR	INJURY CRASHES	FATAL CRASHES
2010	621	19
2011	585	19
2012	477	23
2013	541	22
2014	504	21
2015	492	31
2016	652	18
2017	640	25
2018	769	28
2019	589	19

## WORK ZONE CRASHES

CRASH SEVERITY	CRASHES
Property Damage	2,479
Injury	589
Fatal	19
Unknown	47
<b>TOTAL</b>	<b>3,134</b>

## WORK ZONE CRASHES



Drivers need to be particularly alert when traveling through highway work zones. When a road is not in its usual condition due to construction, it is essential to slow down. Fines for speeding double in work zones when construction workers are present. Work zone crashes are dangerous to both highway workers and motorists. **Most work zone crashes are rear-end collisions, resulting from speeding or inattentive driving.**

ALDOT PROMOTES WORK ZONE AWARENESS IN APRIL OF EACH YEAR. ALABAMA'S THEME FOR

## Work Zone Awareness

IN 2019 WAS

**Drive Like You  
Work Here**



# Truck CRASH STATISTICS

## TEN YEAR DATA

YEAR	TRUCKS INVOLVED	INJURIES	FATALITIES
2010	7,898	2,002	113
2011	6,927	1,715	92
2012	5,798	1,562	90
2013	7,322	1,982	116
2014	7,782	2,184	89
2015	8,484	2,367	118
2016	8,937	2,345	157
2017	9,351	2,563	101
2018	10,079	2,629	121
2019	10,486	2,612	137

## PRIMARY CAUSE OF ALL CRASHES WITH TRUCK INVOLVEMENT\*

PRIMARY CAUSE	CRASHES	
Improper Lane Change or Use	1,558	14.8%
Failed to Yield Right of Way	1,047	10.0%
Unseen Object, Person, or Vehicle	862	8.2%
Tailgating	783	7.5%
Misjudged Stopping Distance	531	5.1%
Improper Backing	426	4.1%
Defective Equipment	417	4.0%
Improper Turn	402	3.8%
Avoiding Animal, Object, or Person	366	3.5%
Failure to Heed Sign/Signal	289	2.8%
Crossed Median/Centerline	283	2.7%
Driving too Fast for Conditions	226	2.2%
Fatigued/Asleep	202	1.9%
Improper Passing	192	1.8%
Ran Off Road	144	1.4%
Driving Under the Influence	125	1.2%
Over the Speed Limit	79	0.7%
Unknown	516	4.9%
All Other	2,038	19.4%
<b>TOTAL</b>	<b>10,486</b>	<b>100%</b>

\*There is no inference as to whether the truck or another type of vehicle was the cause of the crash.

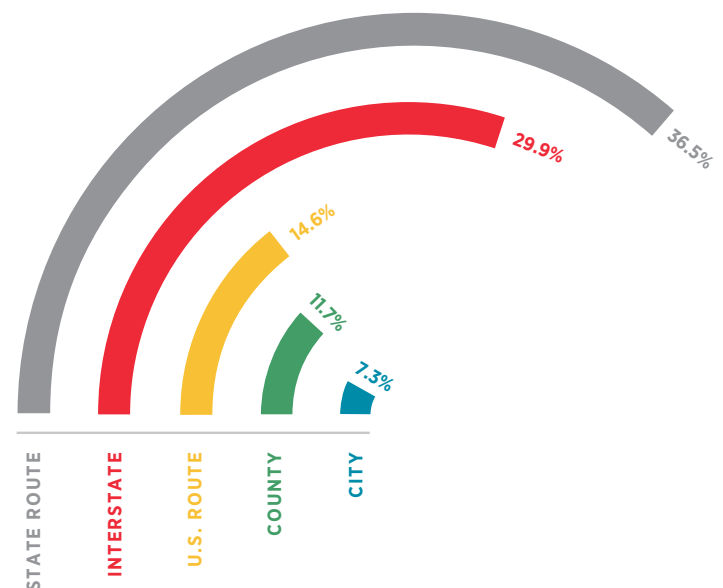
## Truck Definition

A truck is defined as any vehicle heavier than a light truck or SUV, including delivery truck, 18 wheeler, tow truck, dually, or work truck. Truck does not include a bus of any type.

## TOTAL FOR ALL CRASHES WITH TRUCK INVOLVEMENT

ROAD TYPE	CRASHES	FATALITIES
State Route	1,905 18.2%	50 36.5%
Interstate	2,886 27.5%	41 29.9%
U.S. Route	1,506 14.4%	20 14.6%
County	1,031 9.8%	16 11.7%
City	2,854 27.2%	10 7.3%
Other	304 2.9%	0 0.0%
<b>TOTAL</b>	<b>10,486 100%</b>	<b>137 100%</b>

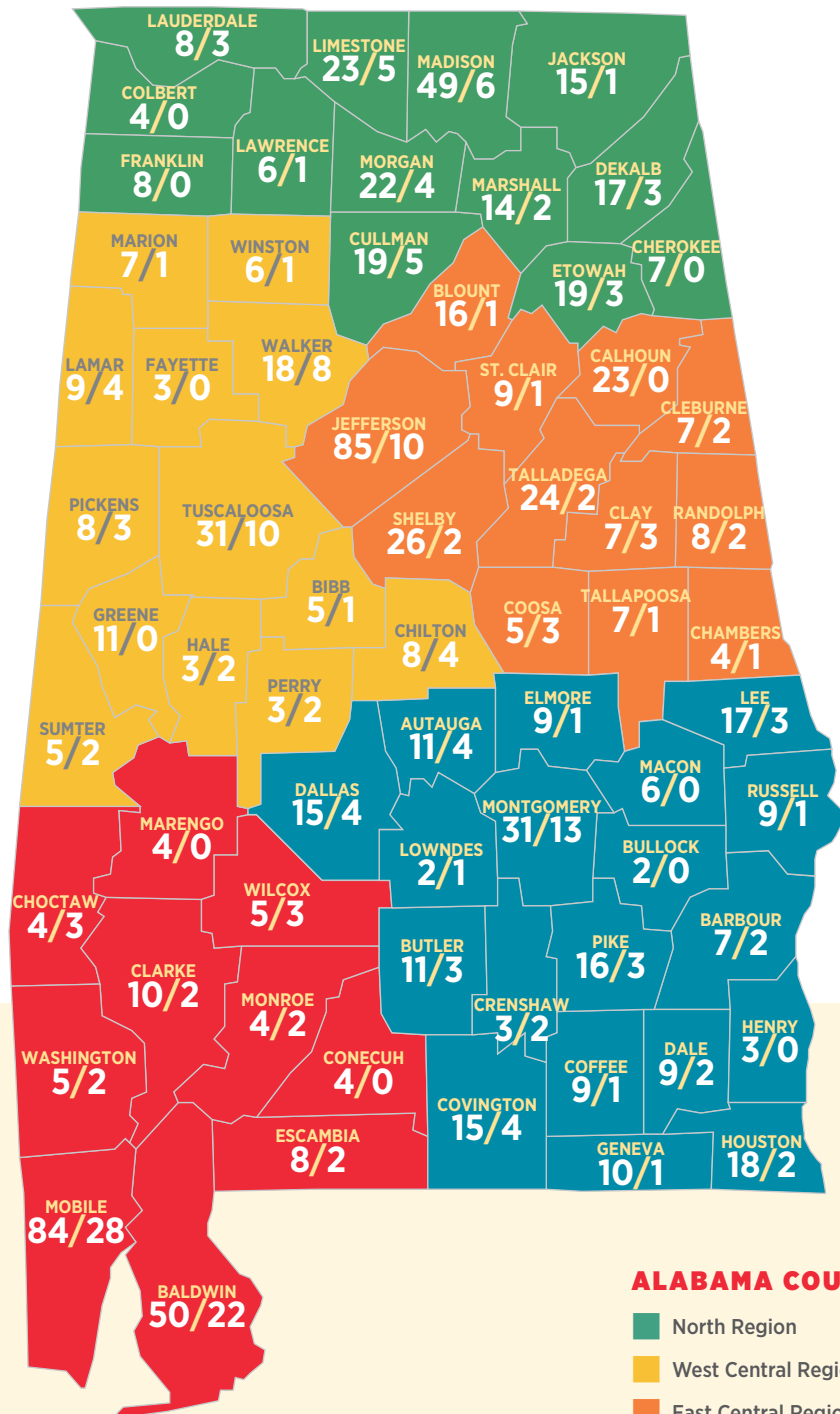
## TRUCK INVOLVED FATALITIES BY ROAD TYPE



# Fatalities **BY COUNTY**

**TOTAL TRAFFIC FATALITIES 930** (First Figure)

**TRAFFIC FATALITIES WITH APPARENT ALCOHOL OR DRUG INVOLVEMENT 210** (Second Figure)



**ALABAMA COUNTY REGION KEY**

- North Region
- West Central Region
- East Central Region
- Southeast Region
- Southwest Region

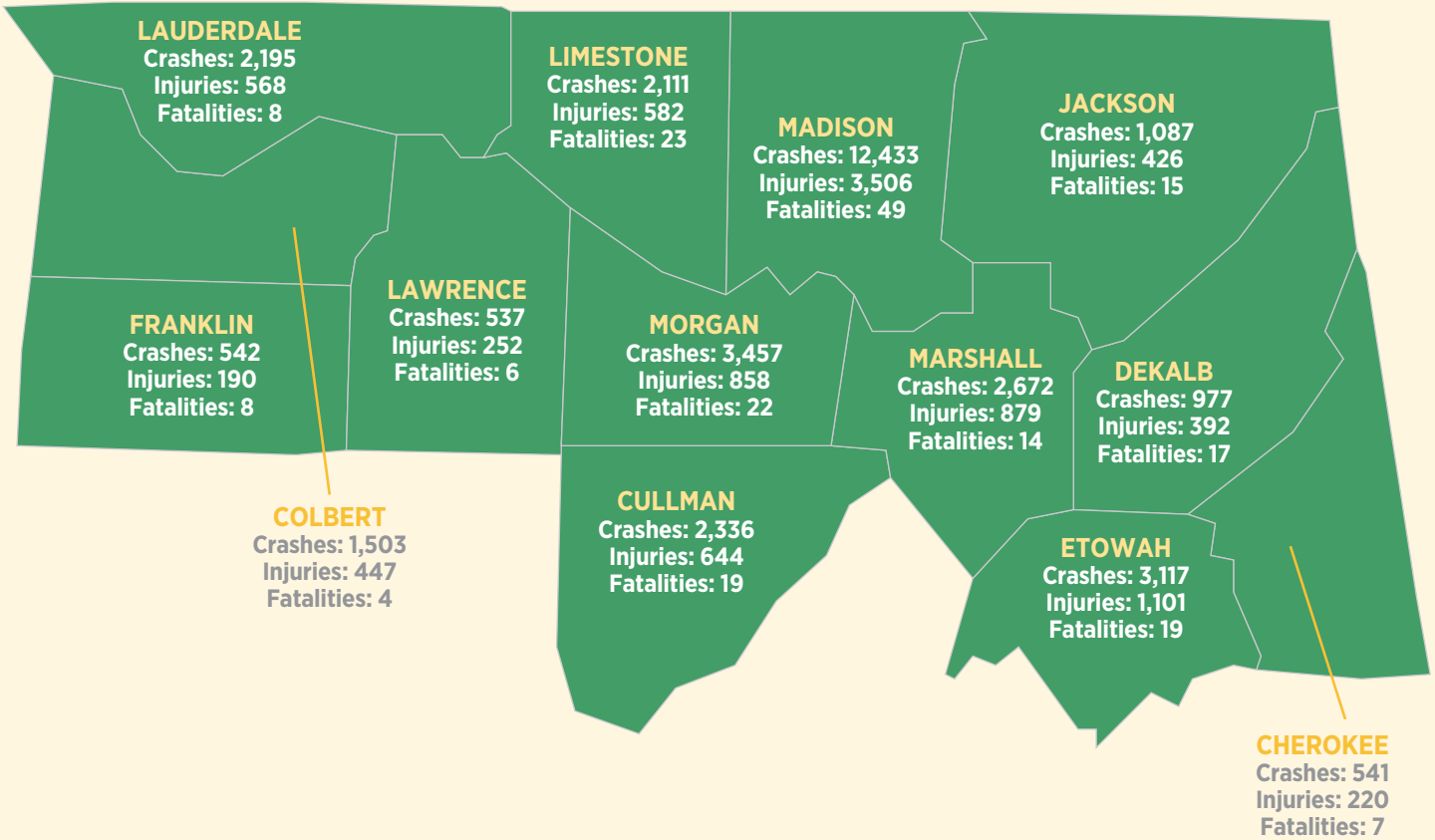




**NORTH**

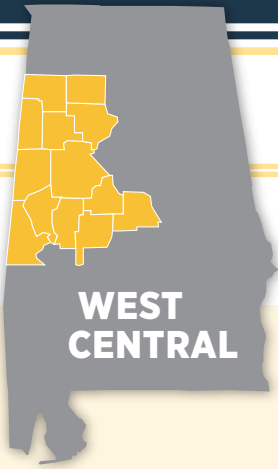
# 2019 Crashes by County

## NORTH REGION STATISTICS



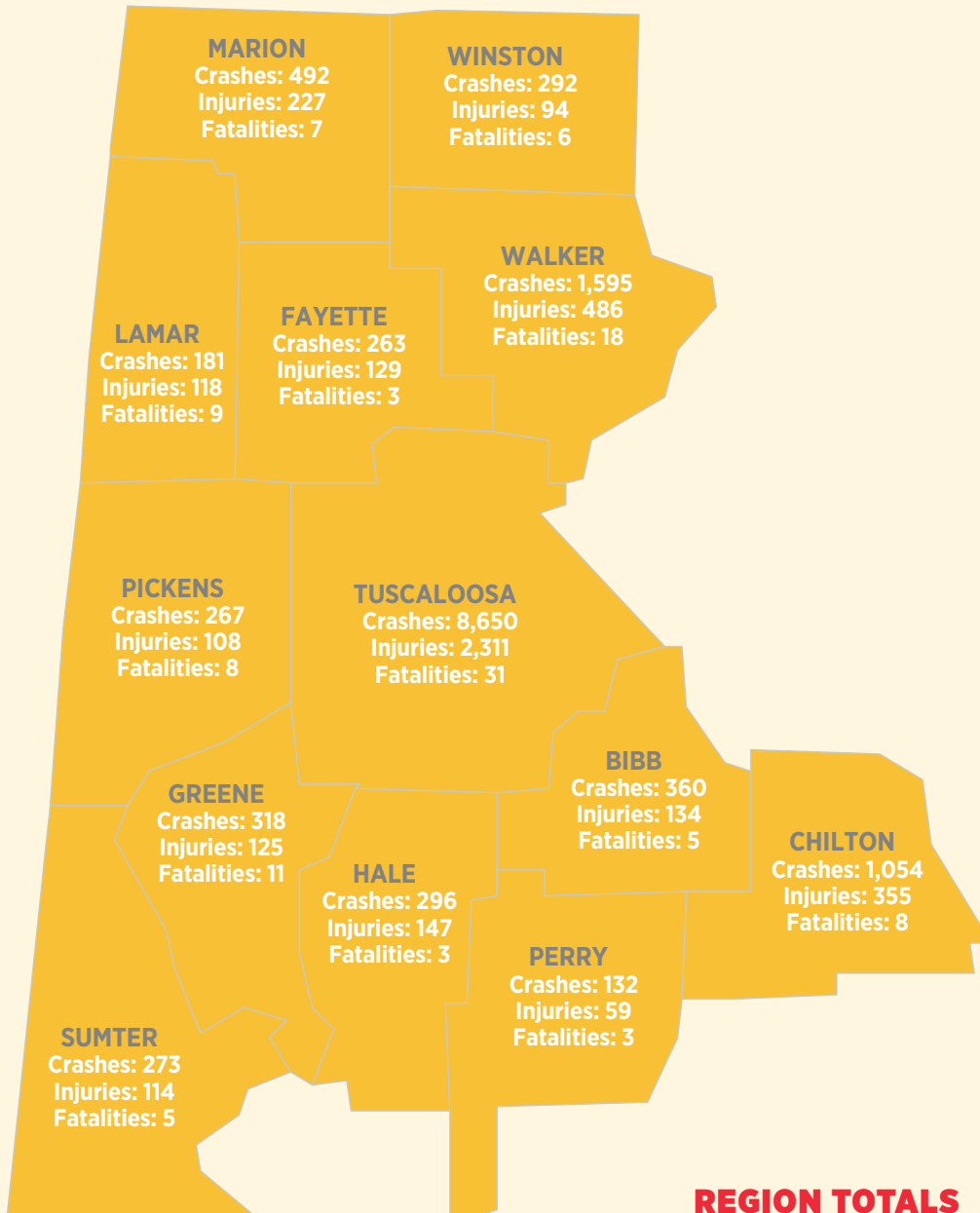
### REGION TOTALS

<b>TOTAL CRASHES</b>	<b>33,508</b>
<b>TOTAL INJURIES</b>	<b>10,065</b>
<b>TOTAL FATALITIES</b>	<b>211</b>



# 2019 Crashes by County

## WEST CENTRAL REGION STATISTICS



### REGION TOTALS

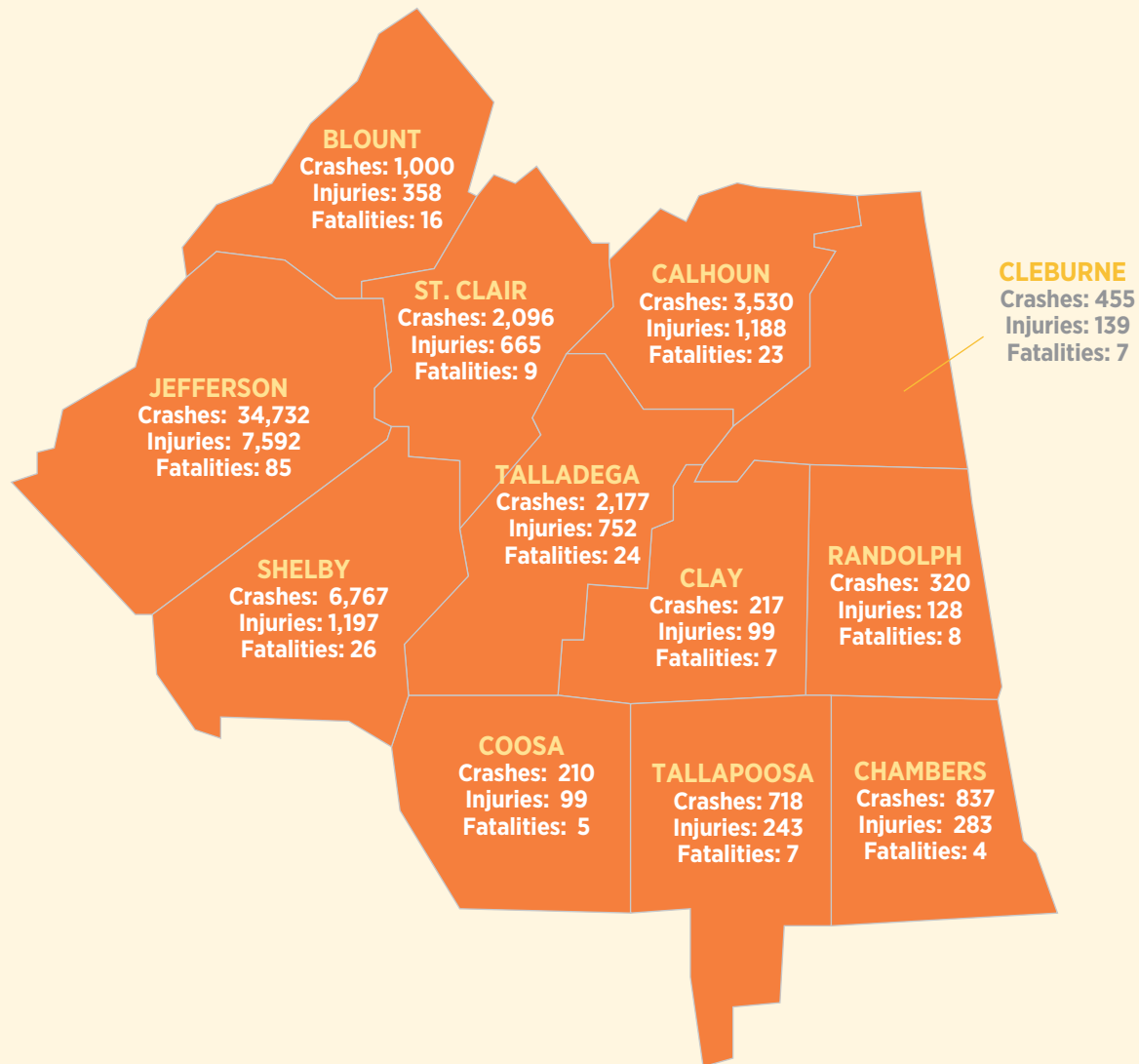
<b>TOTAL CRASHES</b>	<b>14,173</b>
<b>TOTAL INJURIES</b>	<b>4,407</b>
<b>TOTAL FATALITIES</b>	<b>117</b>





# 2019 Crashes by County

## EAST CENTRAL REGION STATISTICS



### REGION TOTALS

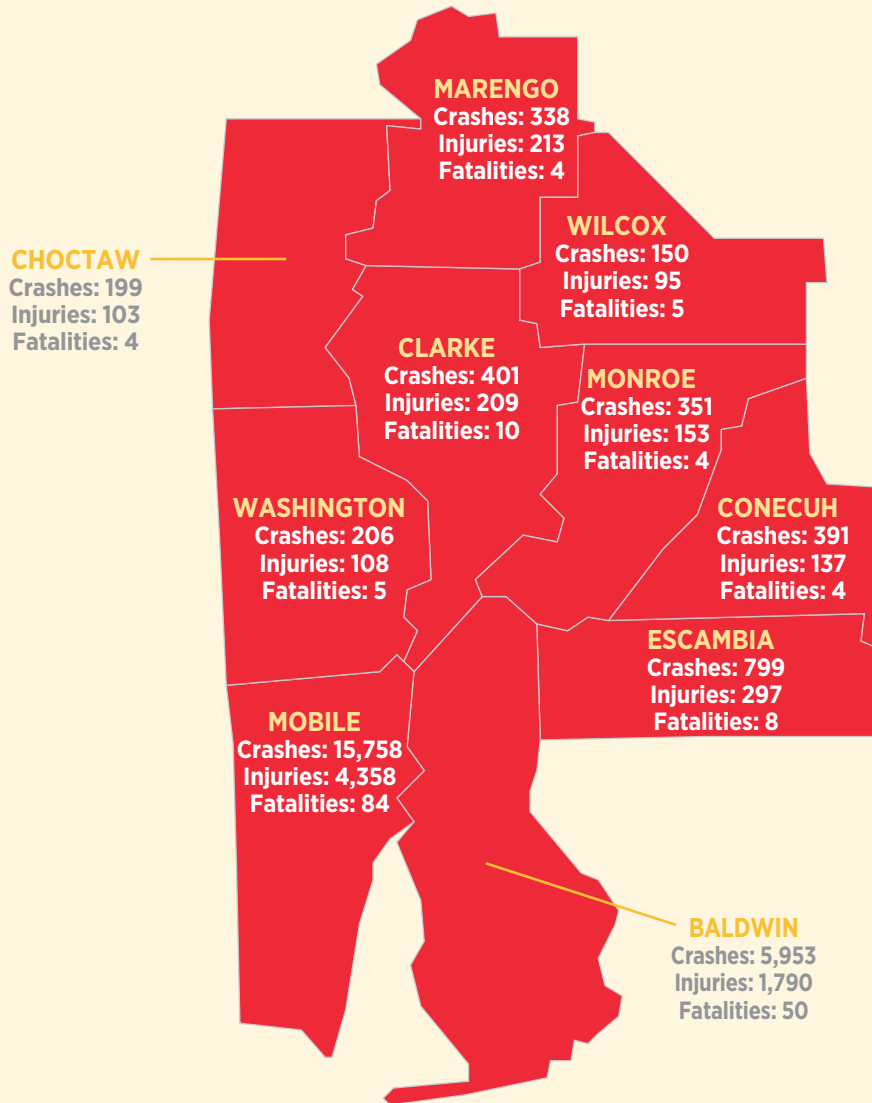
<b>TOTAL CRASHES</b>	<b>53,059</b>
<b>TOTAL INJURIES</b>	<b>12,743</b>
<b>TOTAL FATALITIES</b>	<b>221</b>



# 2019 Crashes by County



## SOUTHWEST REGION STATISTICS



### REGION TOTALS

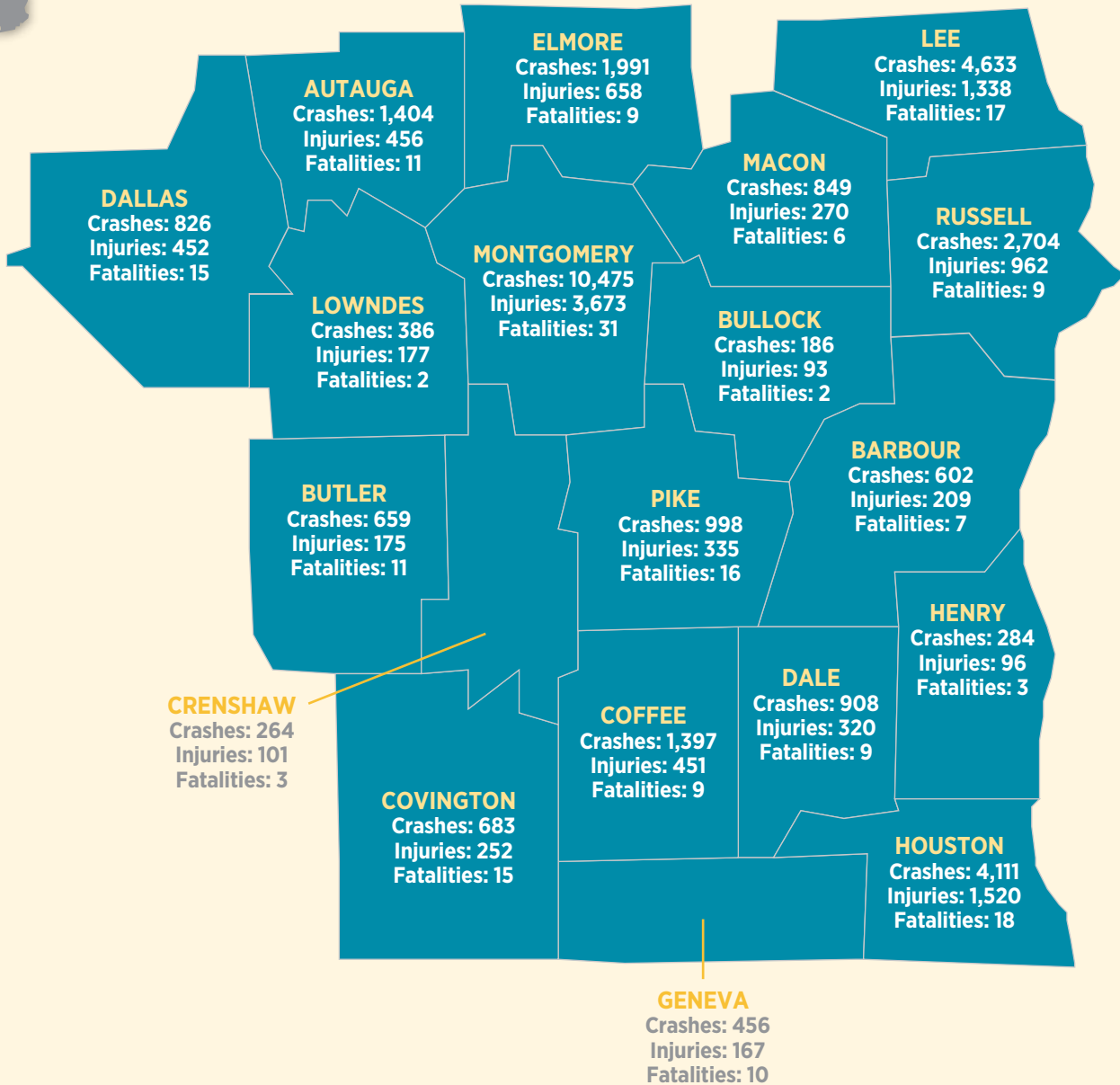
<b>TOTAL CRASHES</b>	<b>24,546</b>
<b>TOTAL INJURIES</b>	<b>7,463</b>
<b>TOTAL FATALITIES</b>	<b>178</b>



**SOUTH  
EAST**

# 2019 Crashes by County

## SOUTHEAST REGION STATISTICS



### REGION TOTALS

<b>TOTAL CRASHES</b>	<b>33,816</b>
<b>TOTAL INJURIES</b>	<b>11,705</b>
<b>TOTAL FATALITIES</b>	<b>203</b>

# COMPARATIVE County Statistics

## 2018 VS. 2019

COUNTY	TOTAL CRASHES FOR COUNTY						URBAN AREAS OF COUNTY						RURAL AREAS OF COUNTY					
	NUMBER OF CRASHES		PERSONS KILLED		PERSONS INJURED		NUMBER OF CRASHES		PERSONS KILLED		PERSONS INJURED		NUMBER OF CRASHES		PERSONS KILLED		PERSONS INJURED	
	2018	2019	2018	2019	2018	2019	2018	2019	2018	2019	2018	2019	2018	2019	2018	2019	2018	2019
Jefferson	34,263	34,732	92	85	7,710	7,592	30,141	30,469	65	60	6,650	6,631	4,122	4,263	27	25	1,060	961
Mobile	16,126	15,758	74	84	4,422	4,358	13,918	13,822	43	45	3,615	3,625	2,208	1,936	31	39	807	733
Montgomery	10,363	10,475	42	31	3,671	3,673	9,462	9,628	28	24	3,299	3,360	901	847	14	7	372	313
Autauga	1,437	1,404	9	11	417	456	926	917	2	1	241	292	511	487	7	10	176	164
Baldwin	5,711	5,953	34	50	1,689	1,790	4,304	4,507	11	16	1,088	1,219	1,407	1,446	23	34	601	571
Barbour	619	602	8	7	243	209	448	425	2	2	152	148	171	177	6	5	91	61
Bibb	353	360	1	5	155	134	177	179	0	2	73	67	176	181	1	3	82	67
Blount	928	1,000	21	16	373	358	374	528	2	1	112	126	554	472	19	15	261	232
Bullock	193	186	4	2	90	93	95	104	0	1	34	44	98	82	4	1	56	49
Butler	697	659	6	11	215	175	314	287	1	3	78	81	383	372	5	8	137	94
Calhoun	3,656	3,530	21	23	1,365	1,188	2,554	2,498	5	7	876	753	1,102	1,032	16	16	489	435
Chambers	895	837	6	4	289	283	732	685	2	1	206	208	163	152	4	3	83	75
Cherokee	550	541	10	7	248	220	226	214	4	3	91	63	324	327	6	4	157	157
Chilton	1,177	1,054	16	8	427	355	531	459	3	2	170	125	646	595	13	6	257	230
Choctaw	195	199	2	4	94	103	78	65	0	0	30	25	117	134	2	4	64	78
Clarke	481	401	13	10	252	209	363	327	5	5	138	151	118	74	8	5	114	58
Clay	232	217	8	7	85	99	119	103	3	0	29	35	113	114	5	7	56	64
Cleburne	424	455	6	7	151	139	85	76	1	0	28	26	339	379	5	7	123	113
Coffee	1,380	1,397	13	9	455	451	1,015	1,052	1	3	269	289	365	345	12	6	186	162
Colbert	1,534	1,503	15	4	454	447	1,181	1,136	8	2	271	299	353	367	7	2	183	148
Conecuh	412	391	5	4	173	137	125	121	1	2	55	51	287	270	4	2	118	86
Coosa	239	210	5	5	114	99	30	28	0	0	18	11	209	182	5	5	96	88
Covington	642	683	8	15	234	252	410	434	3	5	130	137	232	249	5	10	104	115
Crenshaw	278	264	4	3	87	101	102	89	0	0	24	30	176	175	4	3	63	71
Cullman	2,388	2,336	32	19	656	644	1,313	1,244	11	6	333	299	1,075	1,092	21	13	323	345
Dale	902	908	6	9	294	320	630	635	2	2	175	218	272	273	4	7	119	102
Dallas	949	826	11	15	475	452	564	477	3	5	251	254	385	349	8	10	224	198
Dekalb	1,047	977	13	17	366	392	612	494	7	3	176	188	435	483	6	14	190	204
Elmore	2,001	1,991	11	9	781	658	1,355	1,366	4	4	557	461	646	625	7	5	224	197
Escambia	771	799	10	8	330	297	281	372	1	3	85	98	490	427	9	5	245	199
Etowah	3,244	3,117	9	19	1,190	1,101	2,764	2,555	5	8	976	891	480	562	4	11	214	210
Fayette	281	263	4	3	157	129	149	153	1	0	55	83	132	110	3	3	102	46
Franklin	547	542	11	8	227	190	339	319	5	4	115	93	208	223	6	4	112	97
Geneva	420	456	5	10	169	167	212	200	2	4	80	60	208	256	3	6	89	107
Greene	318	318	14	11	128	125	51	50	0	1	25	12	267	268	14	10	103	113
Hale	283	296	6	3	146	147	140	145	0	0	59	49	143	151	6	3	87	98
Henry	315	284	2	3	102	96	161	150	0	1	51	58	154	134	2	2	51	38
Houston	4,044	4,111	11	18	1,577	1,520	3,580	3,587	6	12	1,370	1,314	464	524	5	6	207	206
Jackson	1,128	1,087	7	15	420	426	797	737	1	10	253	242	331	350	6	5	167	184



# COMPARATIVE County Statistics

## 2018 VS. 2019 (continued)

COUNTY	TOTAL CRASHES FOR COUNTY						URBAN AREAS OF COUNTY						RURAL AREAS OF COUNTY					
	NUMBER OF CRASHES		PERSONS KILLED		PERSONS INJURED		NUMBER OF CRASHES		PERSONS KILLED		PERSONS INJURED		NUMBER OF CRASHES		PERSONS KILLED		PERSONS INJURED	
	2018	2019	2018	2019	2018	2019	2018	2019	2018	2019	2018	2019	2018	2019	2018	2019	2018	2019
Lamar	196	181	3	9	99	118	95	68	0	0	51	58	101	113	3	9	48	60
Lauderdale	2,322	2,195	28	8	644	568	1,717	1,659	14	1	403	351	605	536	14	7	241	217
Lawrence	558	537	12	6	236	252	143	144	0	0	59	65	415	393	12	6	177	187
Lee	4,770	4,633	22	17	1,333	1,338	3,937	3,814	11	8	1,053	1,045	833	819	11	9	280	293
Limestone	1,786	2,111	21	23	543	582	760	974	5	7	212	240	1,026	1,137	16	16	331	342
Lowndes	373	386	9	2	176	177	37	54	0	0	21	37	336	332	9	2	155	140
Macon	695	849	8	6	236	270	183	262	0	1	78	100	512	587	8	5	158	170
Madison	12,433	12,433	41	49	3,544	3,506	10,347	10,399	28	26	2,854	2,813	2,086	2,034	13	23	690	693
Marengo	316	338	6	4	155	213	160	152	1	0	66	64	156	186	5	4	89	149
Marion	527	492	5	7	212	227	321	270	1	2	112	98	206	222	4	5	100	129
Marshall	2,689	2,672	20	14	761	879	2,097	2,137	8	6	488	604	592	535	12	8	273	275
Monroe	347	351	6	4	177	153	197	205	1	1	103	82	150	146	5	3	74	71
Morgan	3,490	3,457	18	22	930	858	2,673	2,642	13	10	639	575	817	815	5	12	291	283
Perry	96	132	1	3	37	59	31	31	0	2	14	6	65	101	1	1	23	53
Pickens	276	267	6	8	133	108	118	146	1	1	51	50	158	121	5	7	82	58
Pike	1,100	998	2	16	307	335	801	667	0	5	185	185	299	331	2	11	122	150
Randolph	354	320	8	8	133	128	190	184	1	3	43	58	164	136	7	5	90	70
Russell	2,660	2,704	16	9	878	962	2,117	2,146	7	5	615	683	543	558	9	4	263	279
St. Clair	2,273	2,096	27	9	741	665	1,369	1,293	6	2	403	361	904	803	21	7	338	304
Shelby	7,058	6,767	29	26	1,349	1,197	5,556	5,249	13	17	935	862	1,502	1,518	16	9	414	335
Sumter	279	273	4	5	92	114	75	84	1	1	20	40	204	189	3	4	72	74
Talladega	2,157	2,177	20	24	762	752	1,223	1,327	9	8	326	427	934	850	11	16	436	325
Tallapoosa	657	718	8	7	243	243	485	547	6	2	174	174	172	171	2	5	69	69
Tuscaloosa	8,765	8,650	27	31	2,327	2,311	6,830	6,797	7	17	1,687	1,684	1,935	1,853	20	14	640	627
Walker	1,628	1,595	25	18	583	486	926	915	5	8	268	237	702	680	20	10	315	249
Washington	243	206	1	5	122	108	54	43	1	0	13	18	189	163	0	5	109	90
Wilcox	150	150	3	5	114	95	68	60	1	0	44	40	82	90	2	5	70	55
Winston	304	292	2	6	121	94	147	129	0	3	42	26	157	163	2	3	79	68
<b>TOTAL</b>	<b>159,925</b>	<b>159,102</b>	<b>953</b>	<b>930</b>	<b>47,419</b>	<b>46,383</b>	<b>123,315</b>	<b>123,035</b>	<b>378</b>	<b>384</b>	<b>33,197</b>	<b>33,099</b>	<b>36,610</b>	<b>36,067</b>	<b>575</b>	<b>546</b>	<b>14,222</b>	<b>13,284</b>

# COMPARATIVE City Statistics

## 2018 VS. 2019

CITY	NUMBER OF CRASHES		PERSONS KILLED		PERSONS INJURED	
	2018	2019	2018	2019	2018	2019
Abbeville	70	51	0	0	22	22
Adamsville	164	151	1	3	62	56
Addison	12	14	0	2	2	1
Akron	0	1	0	0	0	0
Alabaster	1,335	1,290	4	2	269	251
Albertville	914	881	2	1	202	246
Alexander City	266	310	3	0	90	91
Aliceville	12	32	1	0	8	20
Allgood	4	5	1	0	2	3
Altoona	16	13	0	0	7	3
Andalusia	222	240	0	2	52	75
Anderson	3	2	0	0	2	0
Anniston	1,218	1,181	1	3	453	410
Arab	230	216	0	1	50	58
Ardmore	49	55	0	0	4	7
Argo	67	62	1	0	27	17
Ariton	8	9	0	0	4	0
Arley	9	3	0	0	3	1
Ashford	41	41	1	0	25	11
Ashland	71	56	2	0	20	24
Ashville	119	102	0	0	41	38
Athens	377	547	1	3	94	123
Atmore	18	117	1	1	10	43
Attalla	242	236	0	2	73	60
Auburn	2,058	1,982	6	2	488	423
Autaugaville	8	11	0	0	5	3
Avon	2	0	1	0	1	0
Babbie	1	4	0	0	1	2
Baileyton	12	10	0	0	6	3
Bakerhill	9	3	0	0	7	4
Banks	1	1	0	0	0	0
Bay Minette	194	183	0	0	39	39
Bayou La Batre	65	63	0	0	32	20
Bear Creek	14	23	0	0	6	9
Beatrice	3	3	0	0	2	1
Beaverton	3	0	0	0	2	0
Belk	3	1	0	0	4	2
Bellwood	0	3	0	0	0	2
Benton	1	1	0	0	0	1
Berry	22	13	0	0	15	9

CITY	NUMBER OF CRASHES		PERSONS KILLED		PERSONS INJURED	
	2018	2019	2018	2019	2018	2019
Bessemer	1,909	1,920	4	2	475	506
Big Cove	1	0	0	0	1	0
Billingsley	0	1	0	0	0	0
Birmingham	19,003	19,210	43	38	4,294	4,289
Black	0	1	0	0	0	1
Blountsville	22	22	0	0	18	6
Blue Mountain	0	3	0	0	0	0
Blue Springs	0	0	0	0	0	0
Boaz	398	419	0	1	111	115
Boligee	0	1	0	1	0	1
Bon Air	0	0	0	0	0	0
Branchville	0	0	0	0	0	0
Brantley	9	4	0	0	1	1
Brent	62	58	0	1	25	40
Brewton	188	198	0	1	50	41
Bridgeport	49	42	1	1	18	9
Brighton	6	12	0	0	1	2
Brilliant	4	5	0	0	3	1
Brookside	5	15	0	0	4	0
Brookwood	53	63	1	0	18	21
Brownsville	0	0	0	0	0	0
Brundidge	49	44	0	1	20	21
Butler	53	42	0	0	26	12
Calera	644	640	2	0	70	68
Camden	33	35	0	0	25	27
Camp Hill	26	43	2	1	18	15
Carbon Hill	40	38	0	0	12	2
Cardiff	0	0	0	0	0	0
Carolina	3	2	0	0	2	0
Carrollton	28	24	0	0	7	5
Carrville	0	0	0	0	0	0
Castleberry	8	3	0	0	1	3
Cedar Bluff	37	25	0	2	10	3
Center Point	11	13	1	0	1	0
Centre	133	150	3	0	62	47
Centreville	41	47	0	1	27	8
Chatom	20	21	1	0	4	7
Chelsea	192	163	0	0	21	34
Cherokee	21	14	0	0	9	5
Chickasaw	101	91	2	1	22	29



# COMPARATIVE City Statistics

## 2018 VS. 2019 (continued)

CITY	NUMBER OF CRASHES		PERSONS KILLED		PERSONS INJURED	
	2018	2019	2018	2019	2018	2019
Childersburg	178	150	0	1	68	55
Citronelle	101	77	0	1	54	30
Clanton	415	352	3	2	119	83
Clay	18	17	0	0	1	5
Clayhatchee	5	5	0	0	3	0
Clayton	12	17	0	0	5	4
Cleveland	16	44	0	0	3	9
Clio	17	13	1	0	7	5
Coaling	41	43	0	1	19	12
Coffee Springs	1	2	0	0	1	1
Coffeetown	2	2	0	0	0	2
Collinsville	39	57	0	0	8	15
Colony	3	1	0	0	3	0
Columbia	14	9	0	0	2	1
Columbiana	116	130	0	3	37	16
Coosada	22	36	0	0	10	12
Cordova	11	19	0	0	1	1
Cottonwood	27	20	0	1	10	4
County Line-Jeff	1	4	0	0	0	1
Courtland	6	4	0	0	6	0
Cowarts	8	21	1	1	2	7
Creola	92	65	0	1	43	6
Crossville	31	35	1	0	6	13
Cuba	5	1	0	0	1	0
Cullman	1,026	996	7	3	229	234
Dadeville	109	113	0	0	25	42
Daleville	99	88	0	0	25	28
Daphne	1,097	1,043	1	4	294	281
Dauphin Island	21	25	0	1	11	21
Daviston	1	1	0	0	0	0
Dayton	0	0	0	0	0	0
Deatsville	1	4	0	0	1	0
Decatur	2,153	2,165	13	9	527	483
Demopolis	119	117	0	0	53	51
Detroit	2	0	0	0	2	0
Dodge City	54	38	0	1	11	6
Dora	64	52	0	0	15	15
Dothan	3,400	3,408	3	9	1,308	1,260
Double Springs	25	21	0	0	14	12
Douglas	21	21	0	0	3	3

CITY	NUMBER OF CRASHES		PERSONS KILLED		PERSONS INJURED	
	2018	2019	2018	2019	2018	2019
Dozier	1	2	0	0	0	0
Dutton	3	2	0	0	1	0
East Brewton	25	21	0	0	12	4
Eclectic	40	41	0	1	31	10
Edwardsville	1	4	0	0	0	2
Elba	58	61	0	0	14	22
Elberta	72	88	0	0	25	29
Eldridge	1	1	0	0	1	0
Elkmont	5	0	0	0	1	0
Elmore	26	17	0	0	8	3
Emelle	0	1	0	1	0	0
Enterprise	948	978	1	3	253	264
Epes	0	0	0	0	0	0
Ethelsville	0	0	0	0	0	0
Eufaula	410	391	1	2	133	135
Eunola	1	0	0	0	0	0
Eutaw	50	49	0	0	25	11
Eva	2	2	0	0	1	0
Evergreen	115	116	1	2	54	48
Excel	19	18	0	0	5	6
Fairfield	325	231	0	1	125	126
Fairhope	535	509	1	1	108	113
Fairview	12	11	0	0	4	4
Falkville	49	31	0	1	32	16
Faunsdale	1	0	0	0	0	0
Fayette	112	125	1	0	29	65
Five Points	8	4	0	0	3	0
Flint City	0	1	0	0	0	1
Flomaton	49	36	0	0	12	10
Floral	35	38	0	1	11	6
Florence	1,524	1,461	9	1	351	305
Foley	767	882	3	2	210	233
Forkland	1	0	0	0	0	0
Fort Deposit	14	16	0	0	11	16
Fort Payne	154	23	3	0	39	5
Franklin	5	9	0	0	3	6
Frisco City	21	24	1	0	16	17
Fruithurst	2	3	0	0	0	2
Fulton	12	11	0	1	2	2
Fultondale	394	520	0	0	99	186

CITY	NUMBER OF CRASHES		PERSONS KILLED		PERSONS INJURED	
	2018	2019	2018	2019	2018	2019
Fyffe	27	32	0	1	14	6
Gadsden	1,790	1,656	4	3	649	655
Gainesville	0	0	0	0	0	0
Gantt	11	4	1	1	9	3
Gantts Quarry	0	0	0	0	0	0
Garden City	3	5	0	0	0	2
Gardendale	339	306	0	2	100	71
Gaylesville	8	3	0	0	3	3
Geiger	0	0	0	0	0	0
Geneva	67	72	0	4	27	35
Georgiana	26	26	0	0	20	9
Geraldine	29	24	0	0	9	9
Gilbertown	18	14	0	0	3	9
Glen Allen	1	0	0	0	1	0
Glencoe	134	93	0	0	50	32
Glenwood	2	1	0	0	0	0
Goldville	0	1	0	0	0	0
Good Hope	76	51	0	1	18	10
Goodwater	28	23	0	0	16	8
Gordo	37	44	0	0	17	11
Gordon	3	2	0	0	1	0
Gordonville	1	1	0	0	0	1
Goshen	1	0	0	0	0	0
Grant	16	20	0	0	6	4
Graysville	2	15	0	1	0	5
Greensboro	69	68	0	0	20	29
Greenville	282	258	1	3	54	72
Grimes	14	11	0	0	6	10
Grove Hill	54	67	2	3	28	31
Gu-Win	0	0	0	0	0	0
Guin	35	34	0	0	12	5
Gulf Shores	690	623	0	2	149	132
Guntersville	536	592	6	4	126	182
Gurley	49	36	2	0	25	13
Hackleburg	17	13	0	0	10	6
Haleburg	0	0	0	0	0	0
Haleyville	109	98	0	2	26	17
Hamilton	145	119	0	0	37	29
Hammondville	12	12	0	0	5	7
Hanceville	91	82	2	0	44	16

CITY	NUMBER OF CRASHES		PERSONS KILLED		PERSONS INJURED	
	2018	2019	2018	2019	2018	2019
Harpersville	65	53	0	1	26	13
Hartford	47	32	0	0	10	2
Hartselle	425	436	1	1	71	80
Hayden	46	71	0	0	12	16
Hayneville	14	18	0	0	8	7
Headland	90	97	0	1	29	33
Heath	3	8	0	0	4	4
Heflin	68	63	1	0	25	20
Helena	248	238	0	1	38	23
Henagar	57	44	2	1	25	19
Higdon	6	3	0	1	6	2
Highland Lake	0	0	0	0	0	0
Hillsboro	2	4	0	0	1	2
Hobson City	2	1	0	0	0	0
Hodges	0	1	0	0	0	0
Hokes Bluff	70	50	0	0	36	20
Holly Pond	9	18	0	0	6	6
Hollywood	35	27	0	1	11	13
Homewood	1,850	1,857	1	0	294	249
Hoover	3,379	3,211	6	6	492	479
Hornhill	0	0	0	0	0	0
Hueytown	174	296	0	0	44	60
Huntsville	8,957	9,018	24	23	2,485	2,390
Hurtsboro	9	3	0	0	0	2
Hytop	0	1	0	0	0	0
Ider	10	19	0	0	12	27
Indian Springs	11	0	0	0	1	0
Irondale	238	269	1	2	77	89
Jackson	148	127	2	1	51	59
Jacksons Gap	14	23	0	1	9	4
Jacksonville	245	308	1	0	98	53
Jasper	689	716	4	8	197	186
Jemison	62	72	0	0	17	29
Kansas	0	0	0	0	0	0
Kelly	0	0	0	0	0	0
Kennedy	3	2	0	0	0	0
Killen	67	89	1	0	15	20
Kimberly	31	22	0	0	12	6
Kinsey	27	20	0	1	6	14
Kinston	8	8	0	0	7	2



# COMPARATIVE City Statistics

## 2018 VS. 2019 (continued)

CITY	NUMBER OF CRASHES		PERSONS KILLED		PERSONS INJURED	
	2018	2019	2018	2019	2018	2019
Lafayette	66	60	0	0	16	23
Lake View	32	22	0	0	11	5
Lakeview	5	6	0	0	1	0
Lanett	292	267	0	1	72	61
Langston	3	1	0	0	1	1
Leeds	263	269	1	0	83	74
Leesburg	39	28	1	0	12	8
Leighton	9	6	0	0	1	3
Lester	0	0	0	0	0	0
Level Plains	36	40	0	1	8	16
Lexington	10	13	0	0	3	2
Libertyville	0	3	0	0	0	1
Lincoln	259	279	3	3	61	85
Linden	30	23	1	0	9	3
Lineville	48	47	1	0	9	11
Lipscomb	16	13	2	0	5	3
Lisman	0	4	0	0	0	3
Littleville	13	31	3	0	9	32
Livingston	57	63	1	0	18	30
Loachapoka	6	2	0	0	5	0
Lockhart	3	2	0	0	0	0
Locust Fork	5	9	0	0	2	3
Louisville	0	1	0	0	0	0
Lowndesboro	1	9	0	0	0	7
Loxley	174	192	0	1	56	78
Luverne	80	79	0	0	22	27
Lynn	3	1	0	0	3	0
Macedonia	0	0	0	0	0	0
Madison	1,440	1,450	2	0	380	443
Madrid	2	0	0	0	1	0
Malvern	23	18	0	0	6	5
Maplesville	18	12	0	0	18	5
Margaret	25	29	1	0	8	6
Marion	16	6	0	2	10	4
Maytown	0	0	0	0	0	0
Mcintosh	24	10	0	0	6	4
Mckenzie	6	3	0	0	4	0
Mcmullen	0	0	0	0	0	0
Memphis	0	0	0	0	0	0
Mentone	8	16	0	0	1	2

CITY	NUMBER OF CRASHES		PERSONS KILLED		PERSONS INJURED	
	2018	2019	2018	2019	2018	2019
Midfield	248	225	2	1	69	65
Midland City	76	77	0	0	17	31
Midway	2	4	0	0	0	2
Millbrook	458	448	0	2	194	148
Millport	1	1	0	0	1	0
Millry	10	12	0	0	3	7
Mobile	11,980	11,891	31	32	2,839	2,851
Monroeville	153	160	0	1	79	58
Montevallo	212	198	1	2	63	31
Montgomery	9,433	9,570	25	23	3,290	3,341
Moody	292	289	1	1	84	77
Moores Crossroads	0	0	0	0	0	0
Mooresville	0	0	0	0	0	0
Morris	11	24	0	0	2	4
Mosses	3	3	0	0	2	3
Moulton	100	114	0	0	36	50
Moundville	73	80	0	0	39	22
Mountain Brook	753	756	1	0	122	113
Mountainboro	6	0	0	0	1	0
Mt. Vernon	60	50	0	0	33	22
Mulga	0	0	0	0	0	0
Munford	52	47	0	0	18	29
Muscle Shoals	679	657	3	1	121	136
Myrtlewood	0	0	0	0	0	0
Napier Field	3	4	0	0	2	2
Nauvoo	1	3	0	0	0	0
Nectar	5	3	0	0	4	4
Needham	0	1	0	0	0	0
New Brockton	7	10	0	0	2	3
New Hope	56	59	0	2	22	20
New Site	15	11	0	0	11	3
Newbern	1	0	0	0	0	0
Newsome	0	0	0	0	0	0
Newton	40	58	0	0	13	22
Newville	1	2	0	0	0	3
North Bibb	0	0	0	0	0	0
North Courtland	14	9	0	0	6	7
North Johns	0	0	0	0	0	0
Northport	1,221	1,165	2	1	237	287
Notasulga	16	14	0	0	3	4



CITY	NUMBER OF CRASHES		PERSONS KILLED		PERSONS INJURED	
	2018	2019	2018	2019	2018	2019
Oak Grove	13	11	1	0	11	8
Oak Hill	1	0	0	0	0	0
Oakman	3	1	0	0	1	2
Odenville	172	152	1	0	35	43
Ohatchee	30	36	0	0	6	18
Oneonta	213	304	1	1	47	69
Onycha	0	2	0	0	0	0
Opelika	1,757	1,666	5	3	534	568
Opp	101	94	2	0	38	32
Orange Beach	383	370	0	3	74	99
Orrville	6	3	0	0	2	1
Owens Crossroads	40	57	3	2	11	21
Oxford	925	856	4	4	280	229
Ozark	317	317	2	1	82	101
Paint Rock	7	4	0	0	1	1
Parrish	18	14	0	0	9	7
Pelham	1,348	1,217	2	5	167	175
Pell City	488	441	0	1	157	130
Pennington	0	0	0	0	0	0
Petrey	0	0	0	0	0	0
Phenix City	2,142	2,183	7	5	625	688
Phil Campbell	13	23	0	1	1	6
Pickensville	7	4	0	0	2	4
Piedmont	107	87	0	0	25	34
Pike Road	29	58	3	0	9	19
Pinckard	20	17	0	0	4	4
Pine Apple	1	1	0	0	0	0
Pine Hill	31	24	1	0	17	13
Pine Ridge	5	1	0	0	0	0
Pisgah	5	10	0	0	3	5
Pleasant Grove	87	75	0	0	23	12
Pollard	0	0	0	0	0	0
Powell	24	11	1	0	10	4
Prattville	1,093	1,106	2	2	286	335
Priceville	100	102	0	1	30	20
Prichard	825	885	8	6	325	411
Providence	1	2	0	0	3	3
Ragland	12	14	1	0	6	8
Rainbow City	293	314	1	1	67	73
Rainsville	171	180	0	1	33	65

CITY	NUMBER OF CRASHES		PERSONS KILLED		PERSONS INJURED	
	2018	2019	2018	2019	2018	2019
Ranburne	14	6	0	0	3	2
Red Bay	56	58	3	0	11	17
Red Level	3	6	0	1	1	3
Reece City	7	10	0	0	4	7
Reform	34	42	0	1	17	10
Rehobeth	3	7	0	0	0	4
Repton	2	2	0	0	0	0
Ridgeville	2	0	0	0	1	0
River Falls	25	27	0	0	10	7
Riverside	34	47	0	0	7	12
Riverview	1	0	0	0	1	0
Roanoke	136	126	1	1	32	36
Robertsdale	207	215	2	3	60	70
Rockford	2	5	0	0	2	3
Rogersville	69	53	0	0	12	16
Roosevelt City	0	1	0	0	0	0
Rosa	4	4	0	0	2	0
Rural Autauga	511	487	7	10	176	164
Rural Baldwin	1,407	1,446	23	34	601	571
Rural Barbour	171	177	6	5	91	61
Rural Bibb	176	181	1	3	82	67
Rural Blount	554	472	19	15	261	232
Rural Bullock	98	82	4	1	56	49
Rural Butler	383	372	5	8	137	94
Rural Calhoun	1,102	1,032	16	16	489	435
Rural Chambers	163	152	4	3	83	75
Rural Cherokee	324	327	6	4	157	157
Rural Chilton	646	595	13	6	257	230
Rural Choctaw	117	134	2	4	64	78
Rural Clarke	118	74	8	5	114	58
Rural Clay	113	114	5	6	56	64
Rural Cleburne	339	379	5	7	123	113
Rural Coffee	365	345	12	6	186	162
Rural Colbert	353	367	7	2	183	148
Rural Conecuh	287	270	4	2	118	86
Rural Coosa	209	182	5	5	96	88
Rural Covington	232	249	5	10	104	115
Rural Crenshaw	176	175	4	3	63	71
Rural Cullman	1,075	1,092	21	13	323	345
Rural Dale	272	273	4	8	119	102



# COMPARATIVE City Statistics

## 2018 VS. 2019 (continued)

CITY	NUMBER OF CRASHES		PERSONS KILLED		PERSONS INJURED	
	2018	2019	2018	2019	2018	2019
Rural Dallas	385	349	8	10	224	198
Rural DeKalb	435	483	6	14	190	204
Rural Elmore	646	625	7	5	224	197
Rural Escambia	490	427	9	5	245	199
Rural Etowah	480	562	4	11	214	210
Rural Fayette	132	110	3	3	102	46
Rural Franklin	208	223	6	4	112	97
Rural Geneva	208	256	3	6	89	107
Rural Greene	267	268	14	10	103	113
Rural Hale	143	151	6	3	87	98
Rural Henry	154	134	2	2	51	38
Rural Houston	464	524	5	6	207	206
Rural Jackson	331	350	6	6	167	184
Rural Jefferson	4,122	4,270	28	26	1,060	961
Rural Lamar	101	113	3	9	48	60
Rural Lauderdale	605	536	14	7	241	217
Rural Lawrence	415	393	12	6	177	187
Rural Lee	833	819	11	8	280	293
Rural Limestone	1,026	1,137	16	15	331	342
Rural Lowndes	336	332	9	3	155	140
Rural Macon	512	587	8	5	158	170
Rural Madison	2,086	2,034	13	23	690	693
Rural Marengo	156	186	5	4	89	149
Rural Marion	206	222	4	5	100	129
Rural Marshall	592	535	12	8	273	275
Rural Mobile	2,208	1,936	31	40	807	733
Rural Monroe	150	146	5	3	74	71
Rural Montgomery	901	847	14	7	372	313
Rural Morgan	817	815	5	13	291	283
Rural Perry	65	101	1	1	23	53
Rural Pickens	158	121	5	7	82	58
Rural Pike	299	331	2	11	122	150
Rural Randolph	164	136	7	5	90	70
Rural Russell	543	558	9	4	263	279
Rural Shelby	1,502	1,511	16	9	414	335
Rural St. Clair	904	803	21	7	338	304
Rural Sumter	204	189	3	4	72	74
Rural Talladega	934	850	11	16	436	325
Rural Tallapoosa	172	171	2	5	69	69
Rural Tuscaloosa	1,935	1,853	20	14	640	627

CITY	NUMBER OF CRASHES		PERSONS KILLED		PERSONS INJURED	
	2018	2019	2018	2019	2018	2019
Rural Walker	702	680	20	10	315	249
Rural Washington	189	163	0	5	109	90
Rural Wilcox	82	90	2	5	70	55
Rural Winston	157	163	2	3	79	68
Russellville	269	236	2	2	103	70
Rutledge	10	3	0	0	1	2
Samson	31	30	1	0	19	8
Sand Rock	9	8	0	1	4	2
Sanford	3	4	0	0	2	4
Saraland	586	597	2	4	237	214
Sardis City	50	42	0	0	25	8
Satsuma	83	74	0	0	22	20
Scottsboro	572	524	0	5	173	179
Section	26	23	0	1	5	2
Selma	548	463	2	5	243	244
Sheffield	238	199	0	0	70	62
Shiloh	2	1	0	0	1	0
Shorter	4	14	0	0	1	13
Silas	3	2	0	0	1	1
Siluria	0	2	0	0	0	1
Silverhill	65	74	2	0	22	36
Sipsey	8	2	1	0	4	2
Skyline	8	8	0	0	2	5
Slocomb	42	42	1	0	17	6
Smiths Station	81	127	0	2	16	47
Snead	55	55	0	0	22	12
Somerville	23	27	0	0	5	7
Southside	123	117	0	1	47	24
Spanish Fort	5	220	0	0	2	58
Springville	75	90	0	0	24	15
St. Florian	44	40	4	0	20	8
Steele	27	18	0	0	5	7
Stevenson	73	81	0	1	31	23
Sulligent	34	22	0	0	18	24
Sumiton	91	69	0	0	28	22
Summerdale	112	108	2	0	48	51
Susan Moore	3	5	0	0	0	3
Sweet Water	0	2	0	0	0	3
Sylacauga	379	384	0	1	76	131
Sylvania	32	27	0	0	10	15

CITY	NUMBER OF CRASHES		PERSONS KILLED		PERSONS INJURED	
	2018	2019	2018	2019	2018	2019
Sylvania Springs	0	3	0	0	0	0
Talladega	335	445	4	3	86	114
Talladega Springs	1	3	0	0	1	2
Tallassee	184	165	2	0	63	61
Tarrant City	355	383	2	3	140	100
Taylor	28	34	0	0	7	4
Thomaston	9	8	0	0	1	4
Thomasville	147	120	1	0	57	57
Thorsby	32	23	0	0	13	8
Town Creek	21	12	0	0	10	6
Toxey	4	2	0	0	0	0
Trafford	0	0	0	0	0	0
Triana	8	7	0	0	1	1
Trinity	46	22	0	0	15	3
Troy	750	621	0	4	165	164
Trussville	933	931	3	4	213	226
Tuscaloosa	5,420	5,429	4	14	1,379	1,334
Tuscumbia	221	229	2	1	61	61
Tuskegee	159	226	0	1	71	77
Twin	0	1	0	0	0	0
Union	0	0	0	0	0	0
Union Grove	2	5	0	0	0	2
Union Springs	93	99	0	1	34	42
Uniontown	15	25	0	0	4	2
Valley	364	353	2	0	114	124
Valley Grande	10	11	1	0	6	9
Valley Head	11	8	0	0	2	1
Vance	44	50	0	0	20	23
Vernon	52	43	0	0	28	34
Vestavia Hills	947	982	1	0	113	127
Vina	1	1	0	0	0	0
Vincent	23	19	0	0	23	13
Vinemont	8	8	2	0	5	3
Vredenburgh	1	0	0	0	1	0
Wadley	3	6	0	0	3	1
Waldo	0	2	0	0	0	0
Walnut Grove	11	12	0	0	6	3
Warrior	91	73	0	0	22	12
Waterloo	0	1	0	0	0	0
Waverly	3	1	0	0	2	0

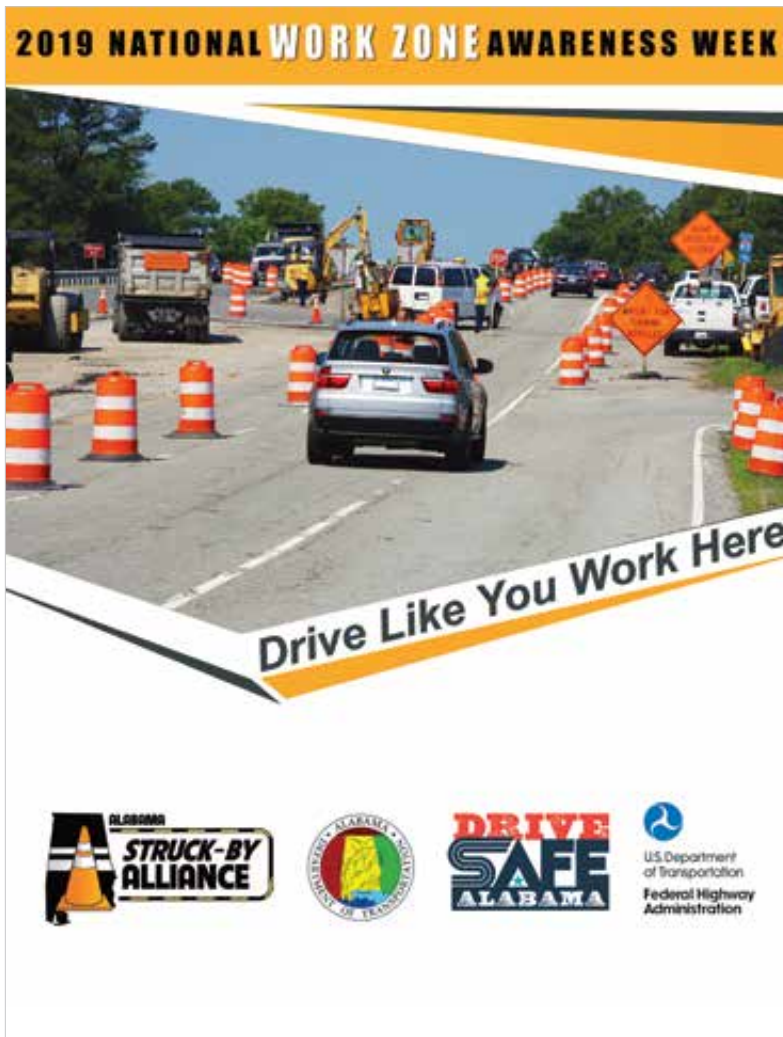
CITY	NUMBER OF CRASHES		PERSONS KILLED		PERSONS INJURED	
	2018	2019	2018	2019	2018	2019
Weaver	33	30	0	0	19	12
Webb	31	29	0	0	11	11
Wedowee	49	45	0	1	8	18
West Blocton	25	36	0	0	7	10
West End	0	1	0	0	0	0
West Jefferson	1	0	0	0	0	0
West Point	19	24	0	1	7	15
Weston	0	0	0	0	0	0
Westover	3	3	0	1	2	6
Wetumpka	502	497	3	0	220	200
Whitehall	3	6	0	0	0	2
Whites Chapel	0	0	0	0	0	0
Wilmer	6	3	0	0	0	0
Wilsonville	11	8	0	0	7	3
Wilton	2	5	0	0	1	3
Winfield	103	80	1	0	41	50
Woodland	2	8	0	0	0	3
Woodstock	65	60	0	0	17	9
Woodville	5	8	0	0	1	2
Yellow Bluff	2	0	0	0	2	0
York	13	19	0	0	1	10
Unknown	0	1	0	3	0	0
<b>TOTAL</b>	<b>159,925</b>	<b>159,102</b>	<b>953</b>	<b>930</b>	<b>47,419</b>	<b>46,383</b>



# Transforming ALABAMA'S SAFETY CULTURE

## Work Zone Awareness Week

ALDOT participated in National Work Zone Awareness week to bring attention to the more than 3,100 work zone crashes of 2019. Media from across the state highlighted the issue. Billboard advertising featured ALDOT employee Jacob (Jake) Smith who died after being hit in a work zone. Governor Kay Ivey signed a proclamation for Work Zone Awareness Week in Alabama in recognition of this important issue.



Poster Advertising



Governor's Proclamation Work Zone Awareness Week



Governor's Work Zone Proclamation Ceremony

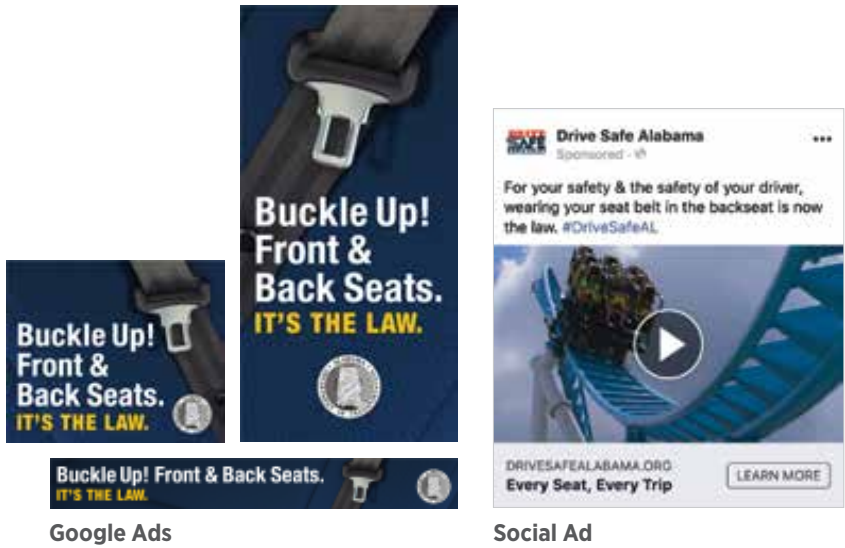


Billboard Advertising



## Rear Seat Belt Law Awareness

Alabama’s seat belt law was amended in 2019 to require back seat passengers in vehicles to wear seat belts. Previously, only front seat passengers were covered by the law. ALDOT led a campaign to raise awareness about the new rear seat belt law. Rear seat passengers in a vehicle are three times more likely to die in a crash if they are not wearing a seat belt, according to the National Highway Traffic Safety Administration.



Google Ads

Social Ad



Rear Seat Belt Law TV  
Watch at [vimeo.com/360829168](https://vimeo.com/360829168)



Outdoor

## Pop-Up Display Banners

Drive Safe Alabama displays and messaging engaged the public in improving the safety culture on Alabama roadways.



# Transforming ALABAMA'S SAFETY CULTURE *(continued)*

## Reaching Alabama

Sports are at the center of daily life in the South. And in Alabama, college football is a really big deal. Outreach through college sports gave ALDOT the opportunity to reach hundreds of thousands of people across the state with its Drive Safe Alabama campaign. Radio and print advertising, digital marketing, in-stadium

signage, and social media were included in this sports marketing outreach. Along with promoting seat belt usage, the Drive Safe Alabama campaign reached football fans with messages to encourage sober drivers to take the wheel.



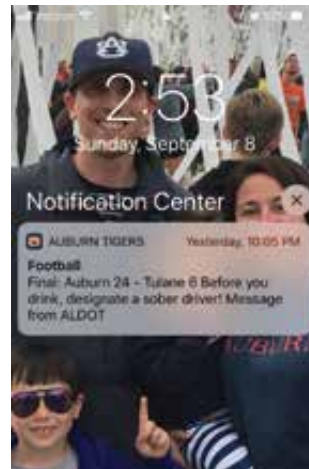
Social Media



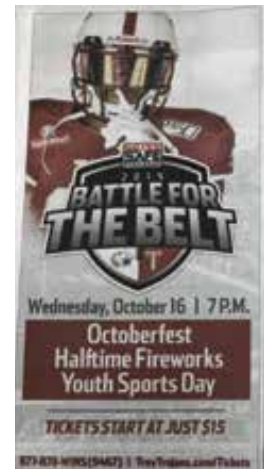
Outdoor



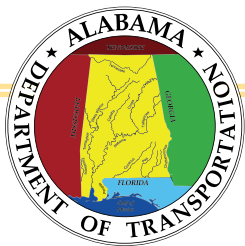
In-Stadium Promotion



Mobile Push Notifications



Newspaper



# ALABAMA DEPARTMENT OF TRANSPORTATION

## dot.state.al.us

### MEDIA & COMMUNITY RELATIONS BUREAU

**Central Office:**  
1409 Coliseum Boulevard, Montgomery, Alabama 36110

**TONY HARRIS**  
Bureau Chief &  
Government Relations Manager  
334.242.6552  
harrist@dot.state.al.us

**ALLISON GREEN**  
Marketing &  
Communication Specialist  
Drive Safe Alabama Coordinator  
334.353.6534  
greena@dot.state.al.us

**HALEY ANSLEY**  
Public Information Officer  
334.242.6729  
ansleyh@dot.state.al.us

**JOSH PHILLIPS**  
Public Information Officer  
334.242.6730  
phillipsjo@dot.state.al.us

**AMANDA DEEM**  
Public Information Officer  
334.242.6963  
deema@dot.state.al.us

### REGIONAL PUBLIC INFORMATION OFFICES

**NORTH REGION**  
1525 Perimeter Parkway  
Huntsville, AL 35086

**SOUTHWEST REGION**  
1701 I-65 West Service Road North  
Mobile, AL 36618

**SETH BURKETT**  
Public Information Officer  
256.505.4964  
burkett@dot.state.al.us

**KATELYN TURNER**  
Public Information Officer  
251.470.8375  
turnerke@dot.state.al.us  
Twitter @ALDOTMobileArea

**WEST CENTRAL REGION**  
204 Marina Drive  
Tuscaloosa, AL 35406

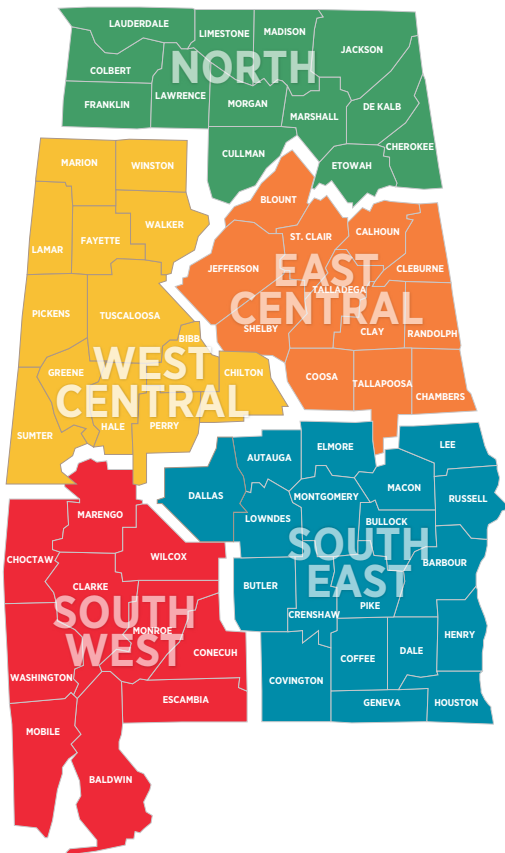
**SOUTHEAST REGION**  
Capitol Commerce Center  
100 Capitol Commerce Boulevard  
Building B, Suite 210  
Montgomery, AL 36117

**JOHN MCWILLIAMS**  
Public Information Officer  
205.562.3115  
mcwilliamsj@dot.state.al.us

**BRANTLEY KIRK**  
Public Information Officer  
334.353.6862  
kirkb@dot.state.al.us

**EAST CENTRAL REGION**  
100 Corporate Parkway, Suite 450  
Hoover, AL 35242

**LINDA CROCKETT**  
Public Information Officer  
205.327.4973  
crockettl@dot.state.al.us



DRIVE SAFE ALABAMA.ORG



DriveSafeAlabama.org





**ALABAMA DEPARTMENT OF TRANSPORTATION**  
[www.dot.state.al.us](http://www.dot.state.al.us) | Contact us at [aldotinfo@dot.state.al.us](mailto:aldotinfo@dot.state.al.us)