

# BURK-KLEINPETER, INC.

ENGINEERS, ARCHITECTS, PLANNERS, ENVIRONMENTAL SCIENTISTS

600 LURLEEN WALLACE BLVD, SUITE 180

TUSCALOOSA, AL 35401

TELEPHONE (205) 759-3221 FAX (205) 759-9166

WWW.BKIUSA.COM

CHAIRMAN OF THE BOARD  
WM. R. "BIFF" BURK, III, PE

ASSOCIATES  
DAVID S. HARGROVE, PE  
CRAIG P. WILLIAMS, PE

WILLIAM R. BURK, JR., 1912-1986

PRESIDENT  
GEORGE C. KLEINPETER, JR., PE

REGIONAL VICE PRESIDENT - AL  
O. JEFFREY WOOD, PE

VICE PRESIDENT  
BRUCE L. HIGGINBOTHAM, PE



OVER 100 YEARS OF SERVICE

May 10, 2017

Mr. Jeffrey McInerney  
Alabama Department of Transportation  
Bureau of Innovative Programs  
1409 Coliseum Boulevard  
Montgomery, AL 36110

**Re: Project No. ACRZ59621-ATRP(007)**  
**Bridge on Holman Church Road Over Kansas City Southern Railroad;**  
**Tuscaloosa County**  
**Existing Bridge DOT #306306D**  
**Existing Bridge RR MP = MR56.86**  
**Existing Bridge RR Station = 3000+87**

Dear Mr. McInerney,

The above referenced Project involves the construction of a new Bridge approximately 86' west of the existing bridge. The Project will also include approach work on both ends of the Bridge.

The proposed bridge will be one span 140 feet long with BT-63 modified girders and reinforced concrete deck. The abutments will be reinforced concrete founded on driven steel H-piles. The abutments will be located outside of Kansas City Southern Right of Way. A minimum vertical clearance of greater than the required 23' will be provided with the new bridge structure. This point of minimum vertical clearance will occur at the right exterior girder 6' left of the centerline of tracks.

The estimated number of working days for the Project is 120.

Sincerely,

**BURK-KLEINPETER, INC.**

A handwritten signature in blue ink that reads "David S. Hargrove P.E." with a stylized flourish at the end.

David S. Hargrove P.E.





# ALABAMA

## DEPARTMENT OF TRANSPORTATION

### PLANS OF PROPOSED PROJECT NUMBER

#### ACBRZ59621-ATRP(007)

#### BRIDGE REPLACEMENT ON HOLMAN CHURCH ROAD OVER KANSAS CITY SOUTHERN RAILROAD TUSCALOOSA COUNTY

STATE	REFERENCE PROJECT NO.	FISCAL YEAR	SHEET NO.	LAST SHEET NO.
AL	ACBRZ59621-ATRP(007)	2017	1	
CONTRACT ID NO.				

Preliminary Project No. Code No.

Design Designation	
ADT (2017)	468
ADT (2037)	571
K	
D	
TDHV	
TADT	0.00%
V ( Design Speed )	35 MPH
Min. Stopping Sight Dist.	250 FT

These plans have been prepared to conform with the Alabama Department of Transportation Standard Specifications for Highway Construction, 2012 Edition.

Existing Bridge (Remove)

INDEX	STA TO STA	LENGTH	BIN
A	20+31.06 21+12.96	81.90'	00100

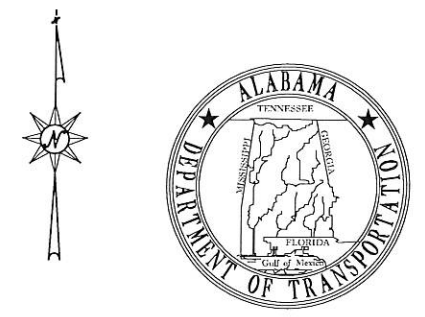
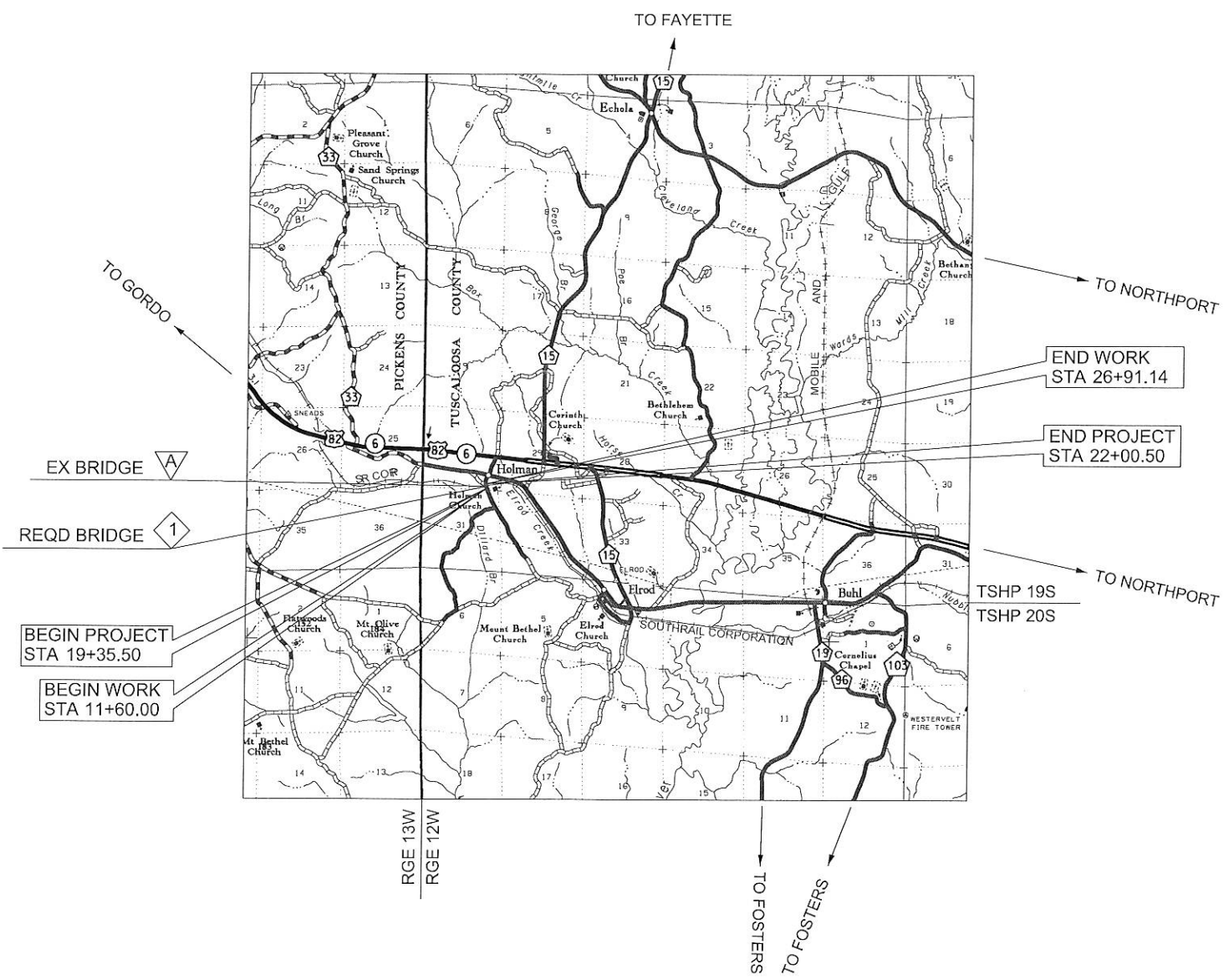
Required Bridge

INDEX	STA TO STA	LENGTH	BIN
1	19+98.00 21+38.00	140.00'	
AASHTO GIRDER BRIDGE 0° SKEW			

TOTAL EFFECT

Equations & Exceptions N/A  
NONE

	FEET	MILES
Total Stationing of Project	265.00	
Equations & Exceptions	0.00	
Net Length of Project	265.00	0.049
Net Length of Bridges	140.00	0.026
Net Length of Roadways	125.00	0.023



ALABAMA DEPARTMENT OF TRANSPORTATION	
Submitted for Approval	
COUNTY ENGINEER	
REGION ENGINEER	
INNOVATIVE PROGRAMS BUREAU	
CHIEF ENGINEER	
Approved	
TRANSPORTATION DIRECTOR	

PREPARED BY:  
**BKI BURK-KLEINPETER, INC.**  
ENGINEERS, ARCHITECTS, PLANNERS, ENVIRONMENTAL SCIENTISTS

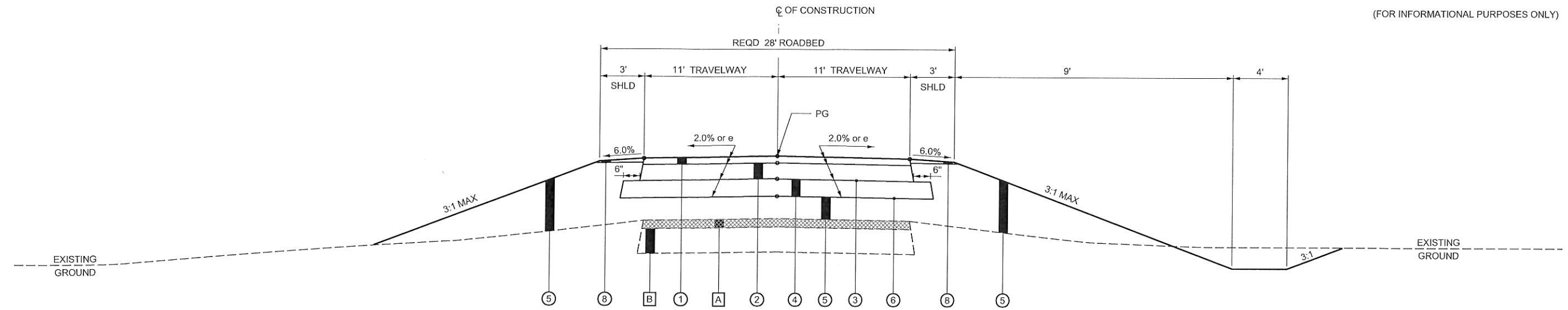
ENGINEER:  
 NO:  
 DATE:

NOTE: THE BIDDERS ATTENTION IS DIRECTED TO SUBARTICLE 102.08(b), CONTAINED IN SPECIAL PROVISION NO. 12.0198, CONCERNING COMBINATION BIDS (COUNTY FINANCED PROJECTS)

# TYPICAL SECTIONS

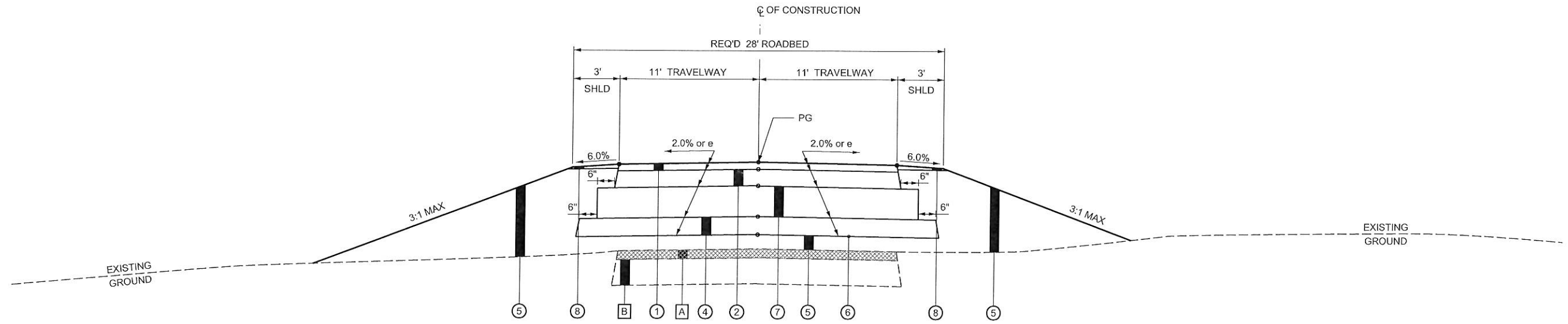
REFERENCE PROJECT NO	FISCAL YEAR	SHEET NO
ACBRZ59621-ATRP(007)	2017	2

(FOR INFORMATIONAL PURPOSES ONLY)



TYPICAL SECTION (HOLMAN CHURCH RD)

STA 11+60.00 - STA 19+78.00  
STA 21+58.00 - STA 26+91.14



TYPICAL SECTION (HOLMAN CHURCH RD)

BRIDGE END SLAB

STA. 19+78.00 - STA. 19+98.00  
STA. 21+38.00 - STA. 21+58.00

LEGEND:

- A** IN PLACE: PAVEMENT (REMOVE)
- B** IN PLACE: COMPACTED SOIL AGGREGATE BASE COURSE (RETAIN)
- 1** REQD: (424A-340) SUPERPAVE BITUMINOUS CONCRETE WEARING SURFACE LAYER, 1/2" MAXIMUM AGGREGATE SIZE MIX, ESAL RANGE A/B (APPROX. 165 LB/SY)
- 2** REQD: (424B-636) SUPERPAVE BITUMINOUS CONCRETE UPPER BINDER LAYER, 1" MAXIMUM AGGREGATE SIZE MIX, ESAL RANGE A/B (APPROX. 275 LB/SY)
- 3** REQD: (401A-000) BITUMINOUS TREATMENT A
- 4** REQD: (301A-016) CRUSHED AGGREGATE BASE COURSE, TYPE B, PLANT MIXED, 7" COMPACTED THICKNESS
- 5** REQD: (210A-000) UNCLASSIFIED EXCAVATION OR (210D-021) BORROW EXCAVATION (LOOSE TRUCKBED MEASUREMENT) (A-4 OR BETTER)
- 6** REQD: (230A-000) ROADBED PROCESSING
- 7** REQD: (450B-000) REINFORCED CEMENT CONCRETE BRIDGE END SLAB (9" THICK)
- 8** REQD: (430B-043) AGGREGATE SURFACING (1" DOWN, CRUSHER RUN) (APPROX 2" THICK)

NOTE: TYPICAL SECTION IS FOR INFORMATIONAL PURPOSES ONLY. APPROACH WORK TO BE PERFORMED BY COUNTY FORCES AT NO COST TO THE PROJECT.

PLAN SUBMITTAL  
TS&L



ALABAMA DEPARTMENT OF TRANSPORTATION

NOT TO SCALE

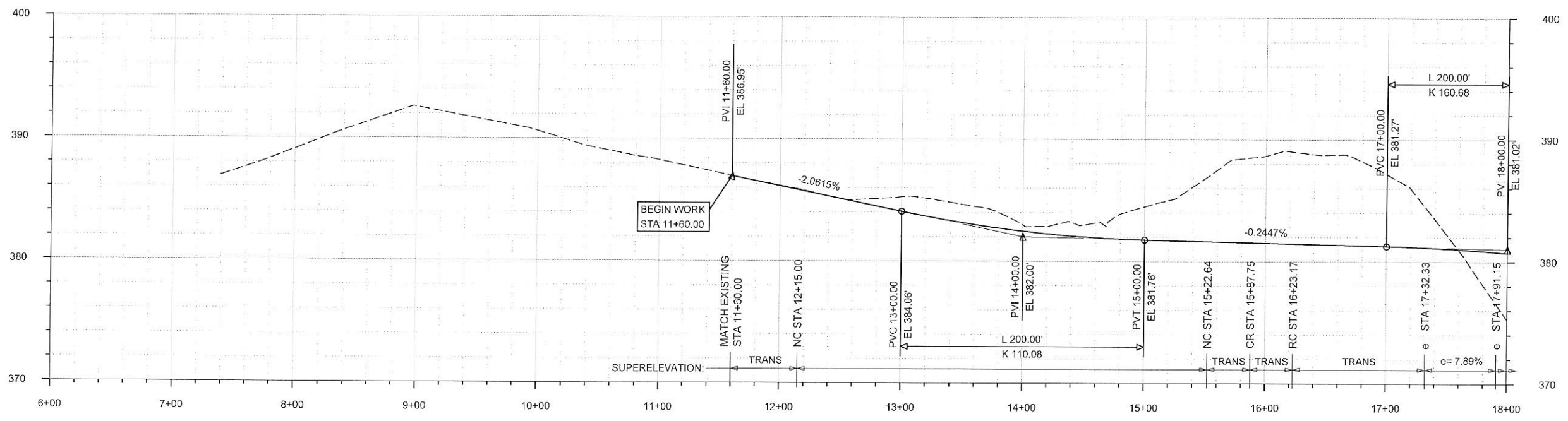
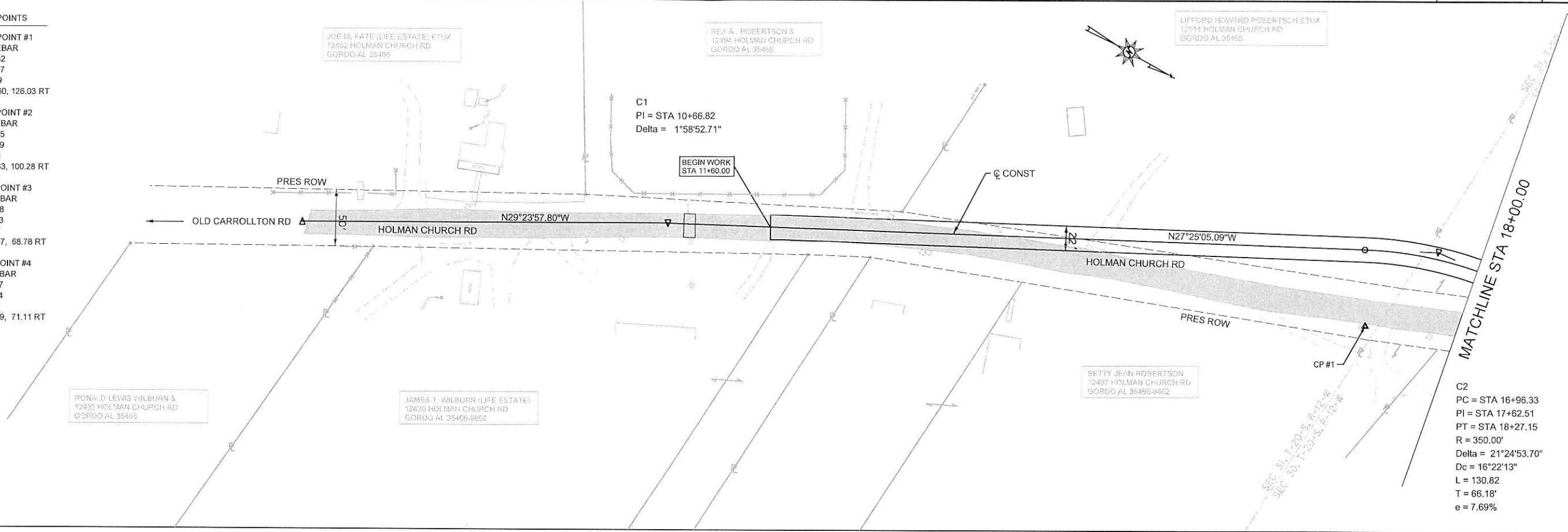
SHEET TITLE  
TYPICAL SECTION

ROUTE  
HOLMAN CHURCH RD

# PLAN /PROFILE SHEET

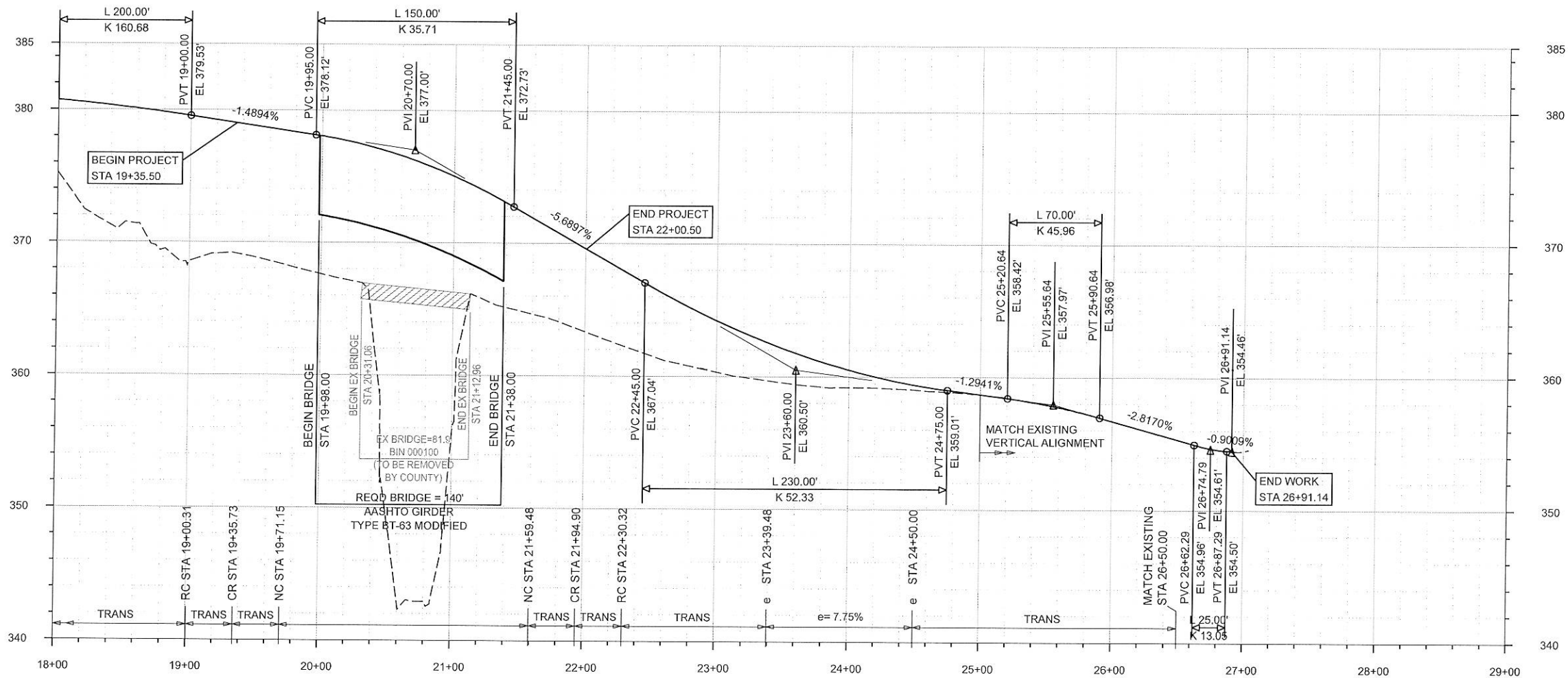
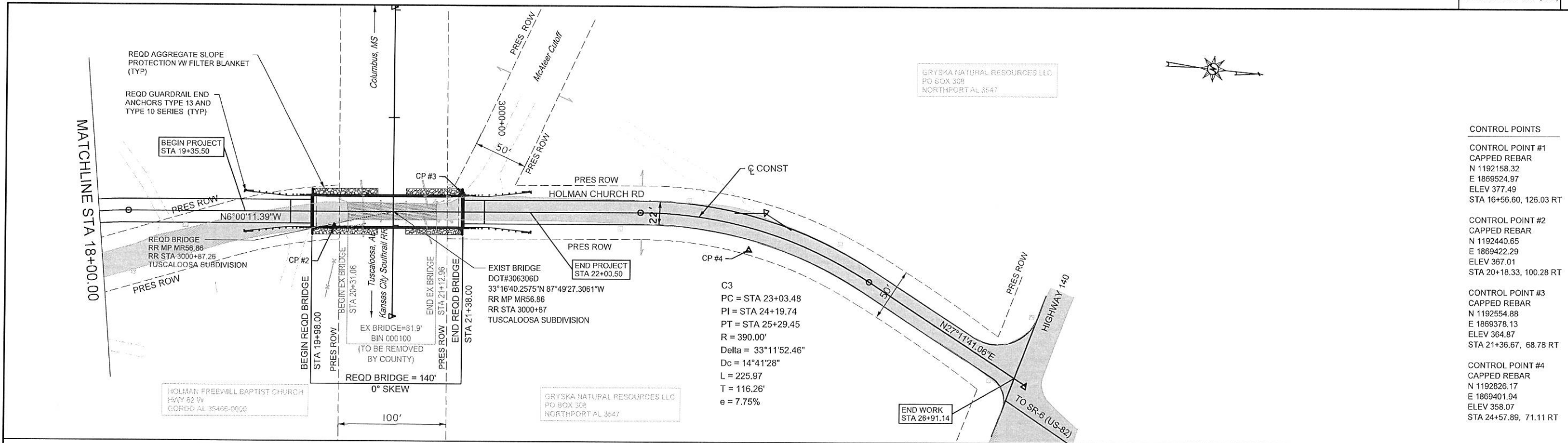
REFERENCE PROJECT NO	FISCAL YEAR	SHEET NO
ACBRZ59621-ATRP(007)	2017	4

- CONTROL POINTS**
- CONTROL POINT #1**  
 CAPPED REBAR  
 N 1192158.32  
 E 1869524.97  
 ELEV 377.49  
 STA 16+56.60, 126.03 RT
- CONTROL POINT #2**  
 CAPPED REBAR  
 N 1192440.65  
 E 1869422.29  
 ELEV 367.01  
 STA 20+18.33, 100.28 RT
- CONTROL POINT #3**  
 CAPPED REBAR  
 N 1192554.88  
 E 1869378.13  
 ELEV 364.87  
 STA 21+36.67, 68.78 RT
- CONTROL POINT #4**  
 CAPPED REBAR  
 N 1192826.17  
 E 1869401.94  
 ELEV 358.07  
 STA 24+57.89, 71.11 RT



# PLAN /PROFILE SHEET

REFERENCE PROJECT NO	FISCAL YEAR	SHEET NO
ACBRZ59621-ATRP(007)	2017	5

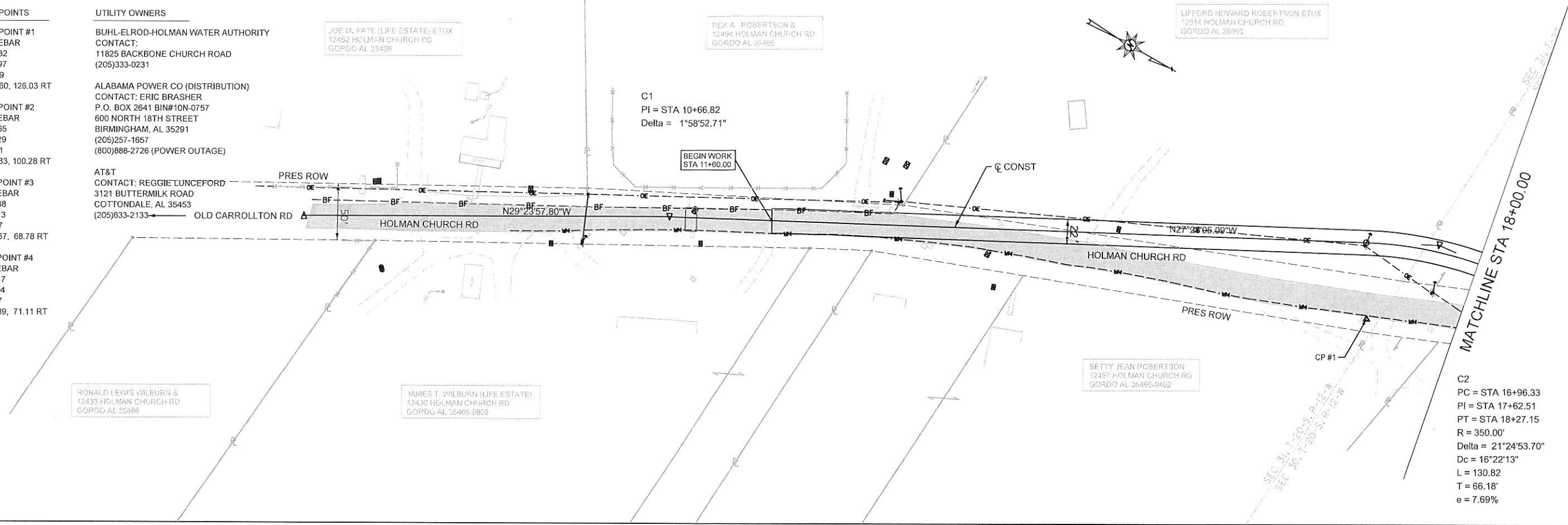


# UTILITY SHEET

REFERENCE PROJECT NO	FISCAL YEAR	SHEET NO
ACBRZ59621-ATRP(007)	2017	7

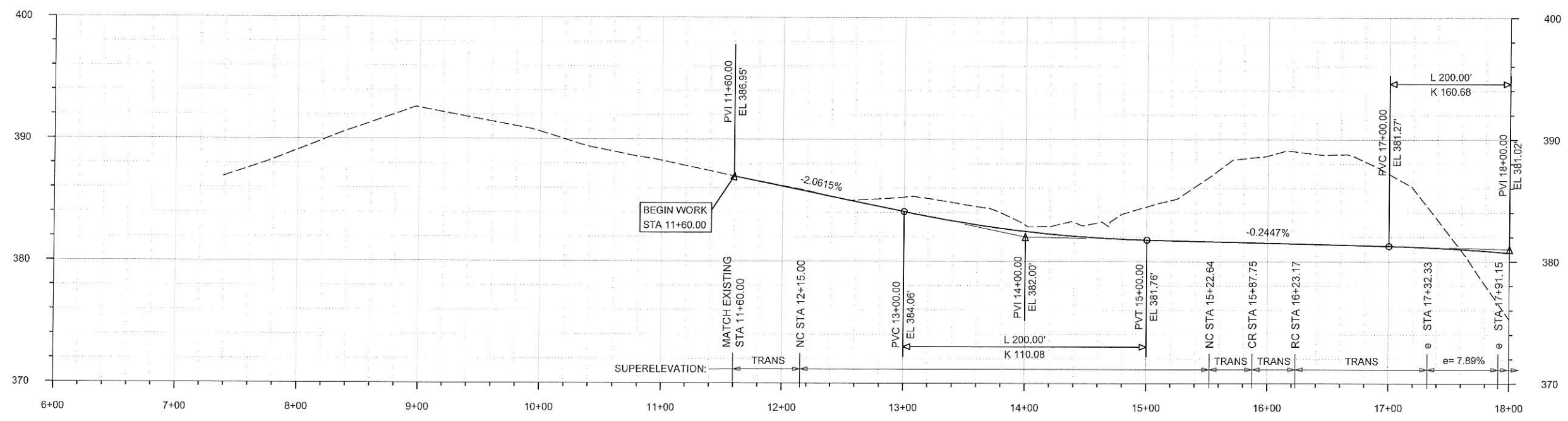
- CONTROL POINTS**
- CONTROL POINT #1**  
CAPPED REBAR  
N 1192158.32  
E 1869524.97  
ELEV 377.49  
STA 16+56.60, 126.03 RT
  - CONTROL POINT #2**  
CAPPED REBAR  
N 1192440.65  
E 1869422.29  
ELEV 367.01  
STA 20+18.33, 100.28 RT
  - CONTROL POINT #3**  
CAPPED REBAR  
N 1192554.88  
E 1869378.13  
ELEV 364.87  
STA 21+36.67, 68.78 RT
  - CONTROL POINT #4**  
CAPPED REBAR  
N 1192826.17  
E 1869401.94  
ELEV 358.07  
STA 24+57.89, 71.11 RT

- UTILITY OWNERS**
- BUHL-ELROD-HOLMAN WATER AUTHORITY**  
CONTACT: 11825 BACKBONE CHURCH ROAD  
(205)333-0231
  - ALABAMA POWER CO (DISTRIBUTION)**  
CONTACT: ERIC BRASHER  
P.O. BOX 2641 BIN#10N-0757  
BIRMINGHAM, AL 35291  
(205)257-1657  
(800)888-2726 (POWER OUTAGE)
  - AT&T**  
CONTACT: REGGIE LUNCFORD  
3121 BUTTERMILK ROAD  
COTTONDALE, AL 35453  
(205)633-2133



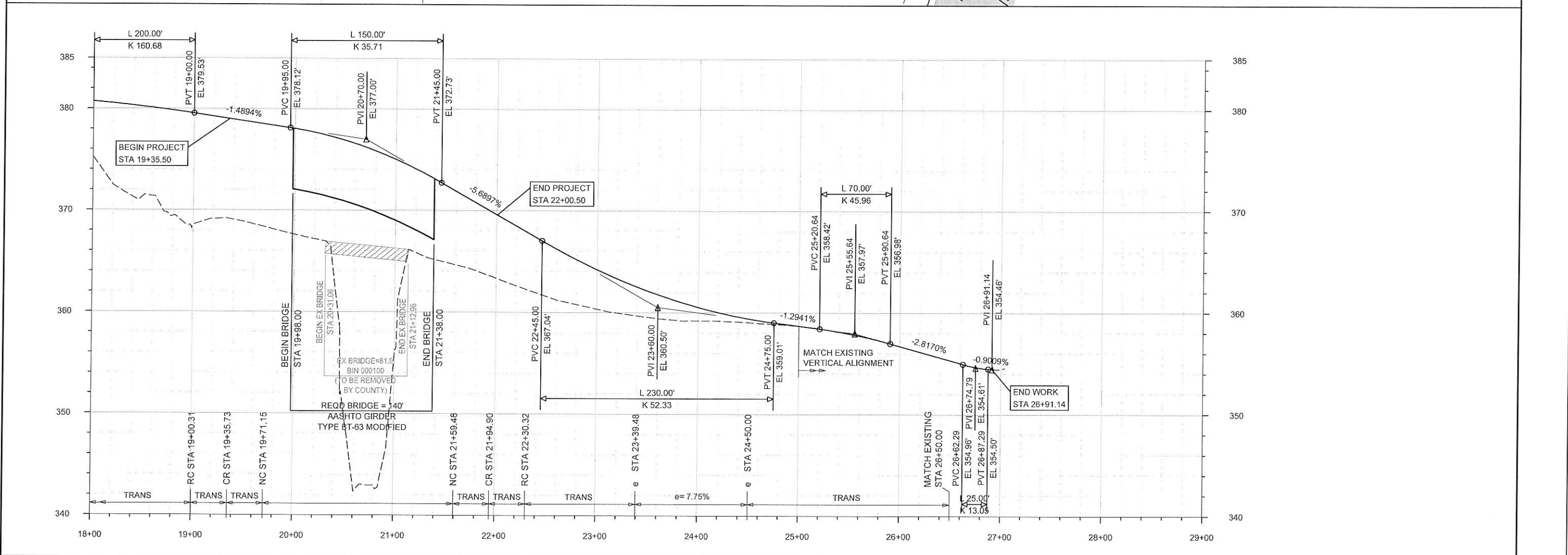
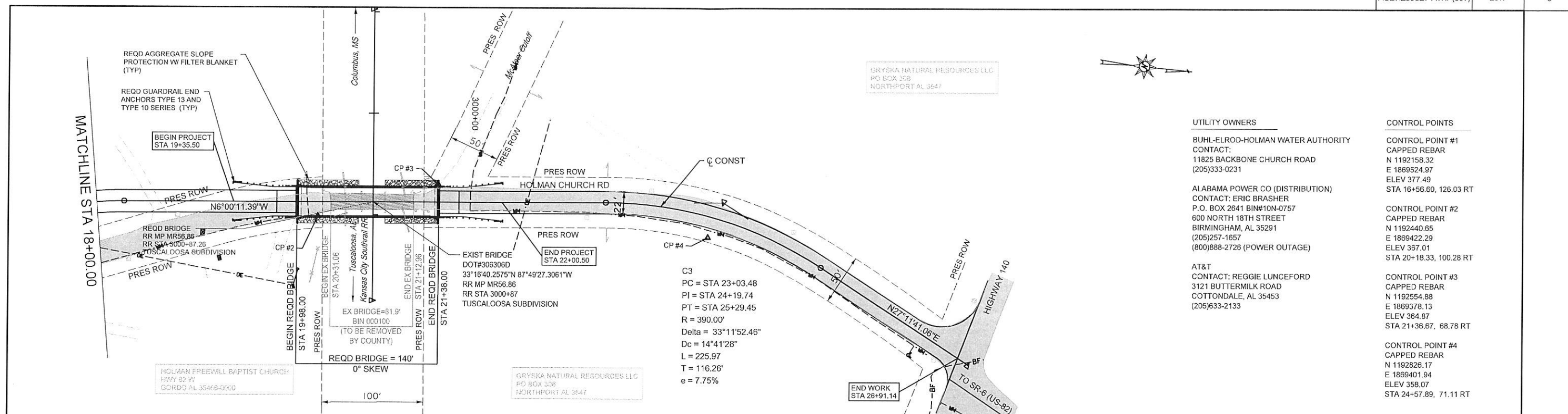
C1  
PI = STA 10+66.82  
Delta = 1°58'52.71"

C2  
PC = STA 16+96.33  
PI = STA 17+62.51  
PT = STA 18+27.15  
R = 350.00'  
Delta = 21°24'53.70"  
Dc = 16°22'13"  
L = 130.82  
T = 66.18'  
e = 7.69%

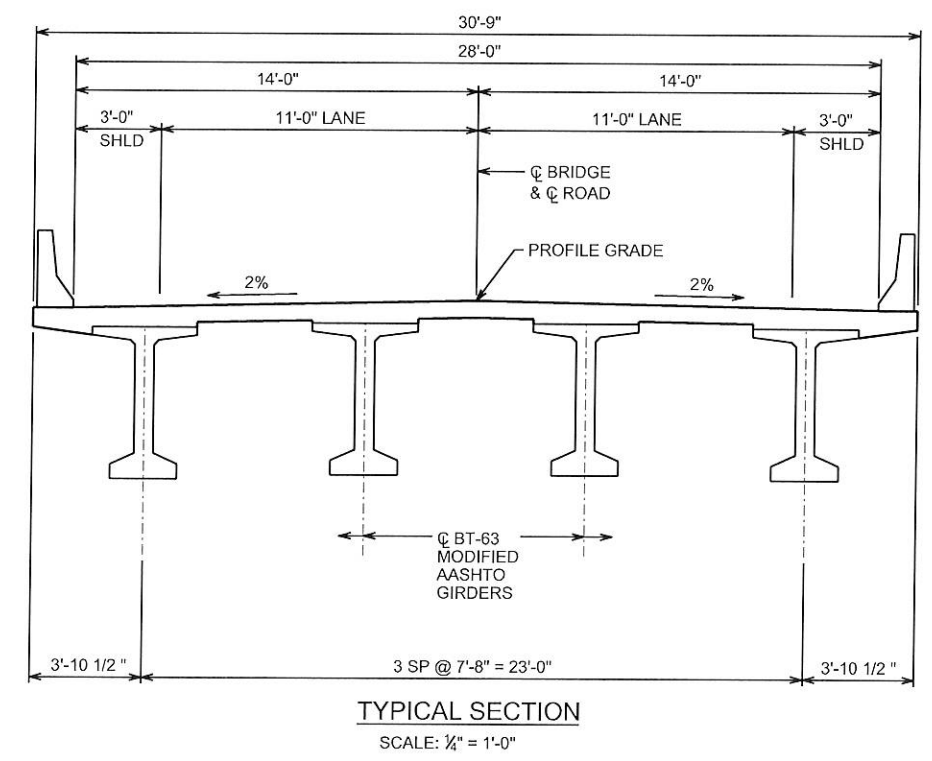
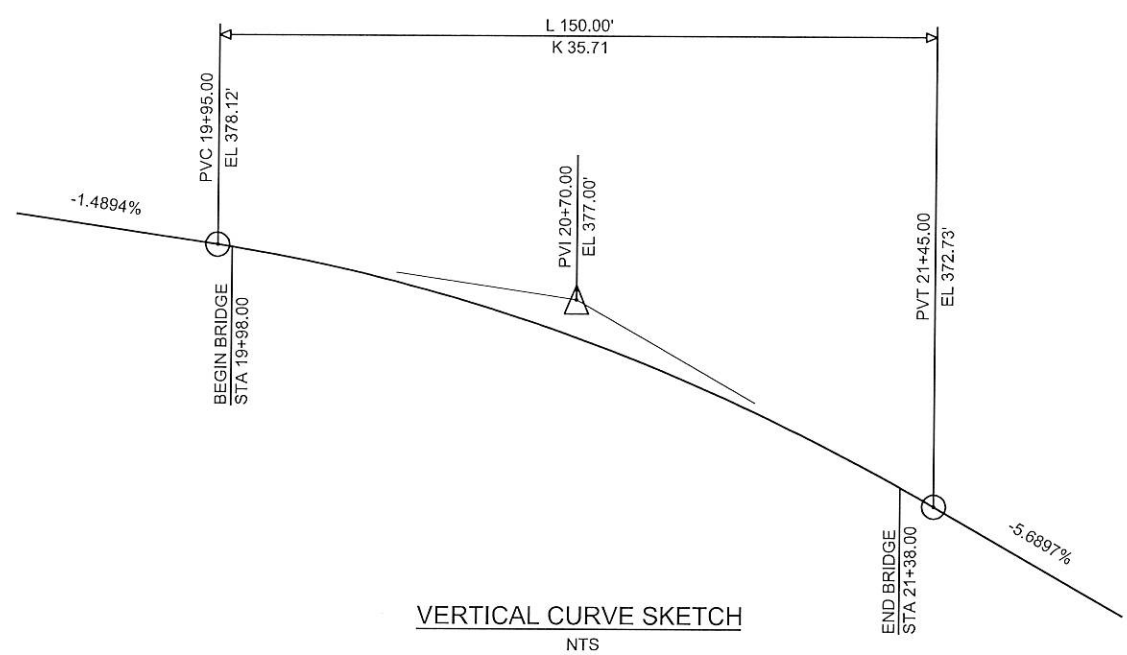
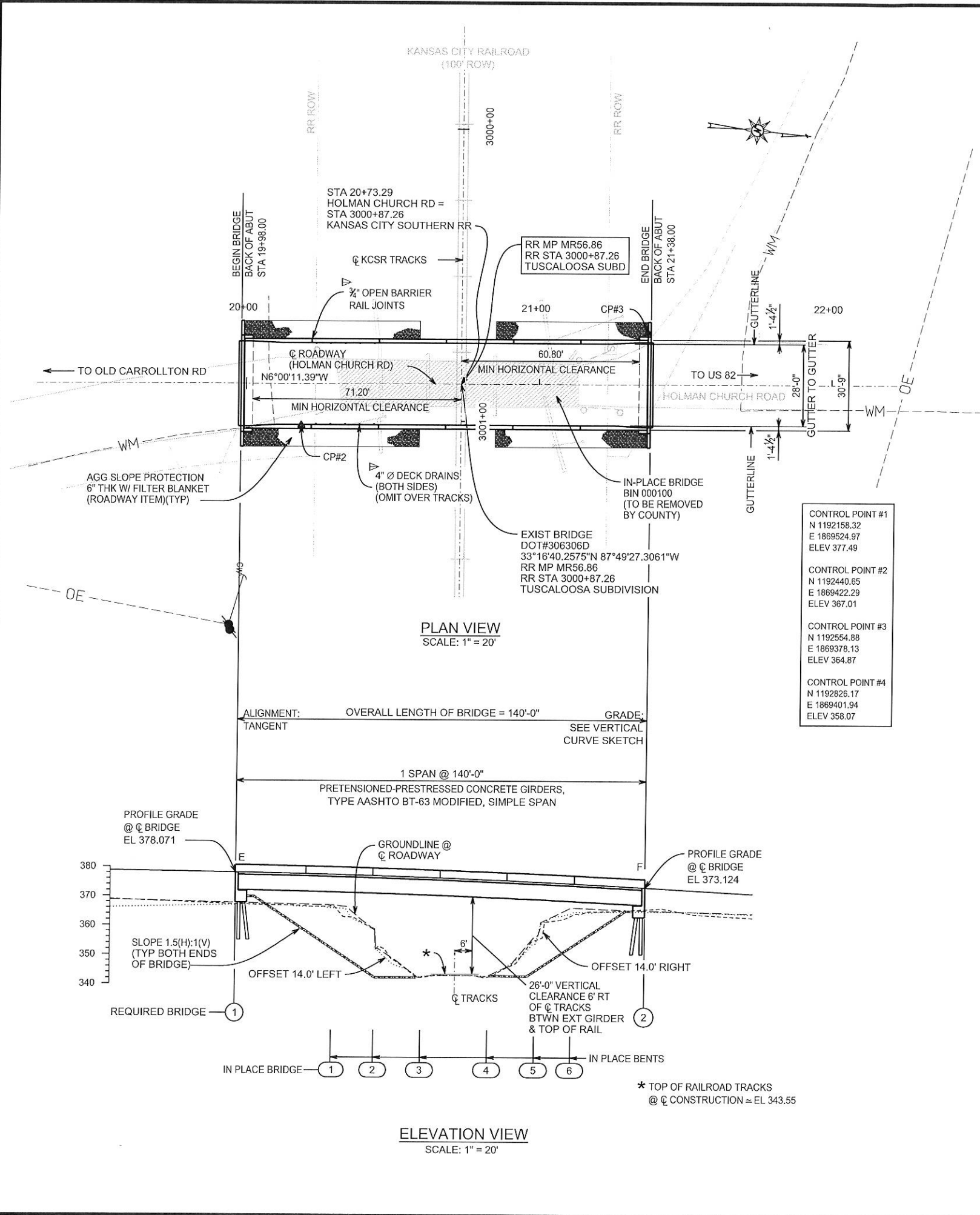


# UTILITY SHEET

REFERENCE PROJECT NO	FISCAL YEAR	SHEET NO
ACBRZ59621-ATRP(007)	2017	8



Plotted: SYSTEM DATE&TIME



<b>CONTROL POINT #1</b>
N 1192158.32
E 1869524.97
ELEV 377.49
<b>CONTROL POINT #2</b>
N 1192440.65
E 1869422.29
ELEV 367.01
<b>CONTROL POINT #3</b>
N 1192554.88
E 1869378.13
ELEV 364.87
<b>CONTROL POINT #4</b>
N 1192826.17
E 1869401.94
ELEV 358.07

NOTE:  
▶ SEE DETAILS ON STANDARD DRAWING I-131.

**BKI**

BURK-KLEINPETER, INC  
600 LURLEEN WALLACE BLVD, SUITE 180  
TUSCALOOSA, AL 35401  
205-759-3221

<b>ALABAMA DEPARTMENT OF TRANSPORTATION</b>			
BRIDGE SHEET NO. OF 10	PROJECT NO. ACBRZ59621-ATRP(007)		
REVISIONS	BRIDGE ON HOLMAN CHURCH ROAD OVER KANSAS CITY SOUTHERN RAILROAD AT STA 19+98.00		
	TUSCALOOSA COUNTY		
	<b>GENERAL PLAN AND ELEVATION</b>		
ESTIMATED QUANTITIES	DESIGNED BY: DSH	DRAWN BY: CRF	
COMPUTED BY: CRF	CHECKED BY: DSH	DATE DRAWN: .	
VERIFIED BY: DSH	DATE CHECKED: .	SCALE: .	
BIN:			