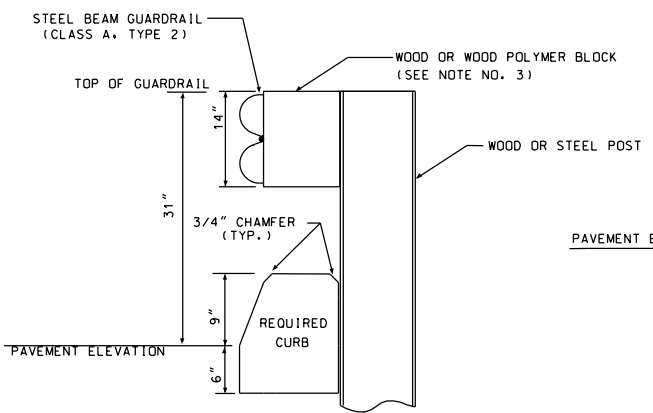
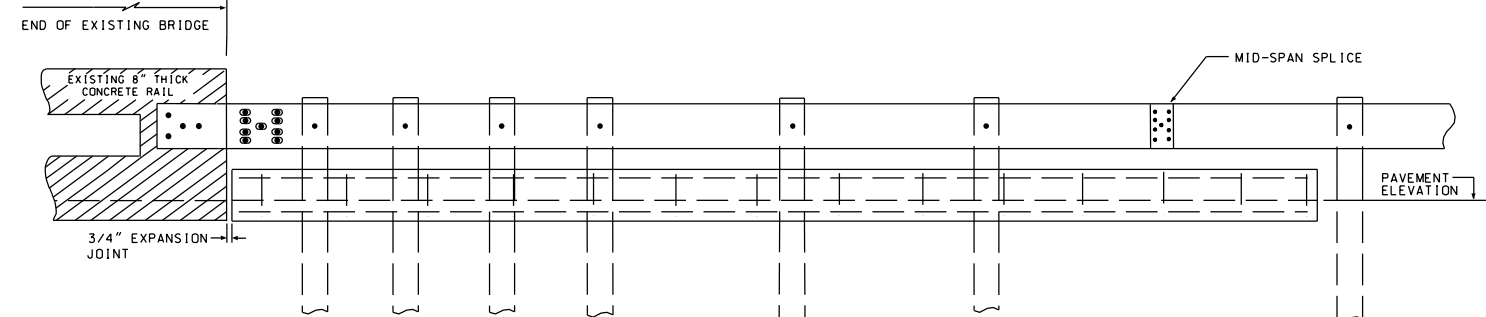
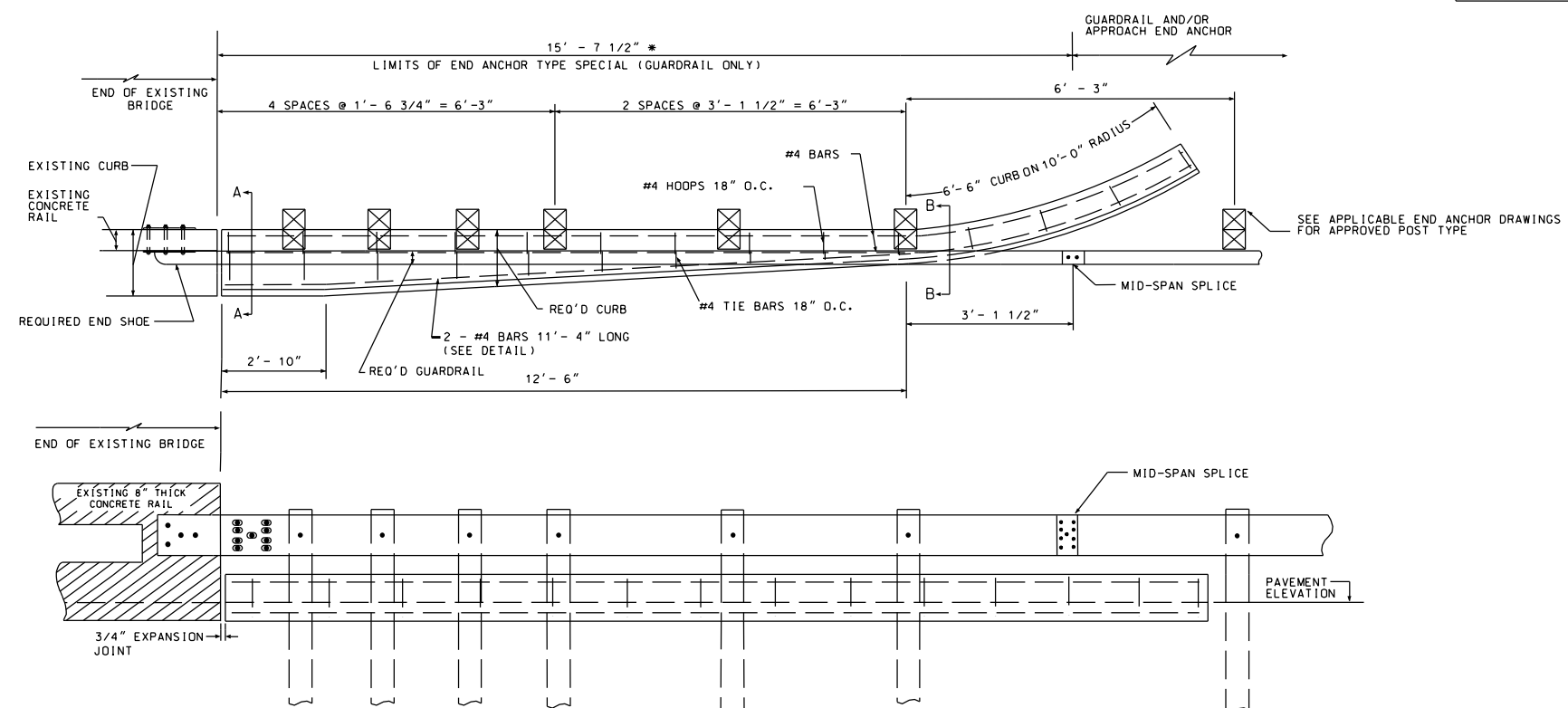
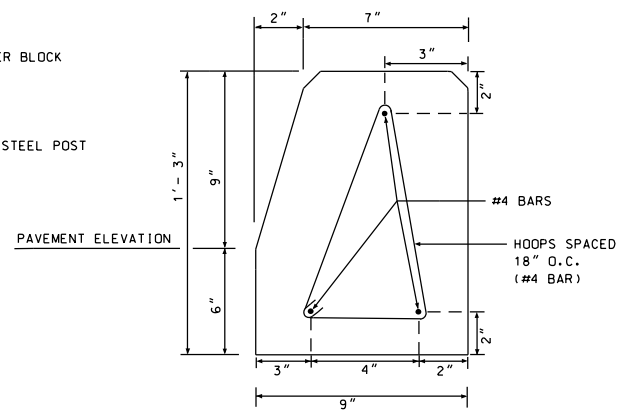


SECTION - AA



SECTION - BB



REINFORCEMENT DETAIL FOR CONCRETE CURB - SECTION B-B

NOTES

- ① 3/4" EXPANSION JOINT IS REQUIRED BETWEEN BRIDGE CURB AND END ANCHOR CURB.
- ② TOP AND SIDES OF NEW CURB SHALL ALIGN WITH TOP AND SIDES OF EXISTING BRIDGE CURB.
- ③ SEE SPECIAL DRAWINGS INDEXES 326 AND 327 FOR ADDITIONAL DETAILS.
- ④ PAYMENT FOR END ANCHOR, TYPE SPECIAL INCLUDES 19'-0" OF REQUIRED CURB, 15'-7 1/2" OF CLASS A, TYPE 2 GUARDRAIL, AND THE END SHOE.
- ⑤ THE CURB DIMENSIONS REPRESENT A STANDARD 9" BRIDGE CURB AND MAY NOT REFLECT THE ACTUAL BRIDGE CURB DIMENSIONS. THE CONTRACTOR SHALL BE RESPONSIBLE FOR FIELD VERIFYING THE ACTUAL BRIDGE CURB DIMENSIONS PRIOR TO FORMING AND CONSTRUCTING THE REQUIRED CURB SECTION FOR THE END ANCHOR, TYPE SPECIAL.
- \* ⑥ THE CONTRACTOR SHALL PROVIDE A CONTINUOUS PIECE OF GUARDRAIL FOR THE ENTIRE LIMITS OF THE END ANCHOR, TYPE SPECIAL.

REVISIONS		
Drawn By: STP 02/01/96	Revised Guardrail Height per MASH Standards 6/01/17 - JAS	Revised End Anchor Limits for Required Mid-Span Splice 11/5/19 - DJM
Converted to U.S. Customary 07/08/99 - TBM		
Added Note No. 5 11/07/02 - TBM	CHANGED BUREAU NAME IN TITLE BLOCK - 10/6/17 DJM	
Added Two Additional Post At Bridge End 11/06/12 - TBM	REVISED NOTE 3 2/21/18 DJM	
	Revised Guardrail Height 4/24/19 - DJM	

ALABAMA DEPARTMENT OF TRANSPORTATION

LOCAL TRANSPORTATION BUREAU  
SPECIAL PROJECT DRAWING  
DETAILS OF GUARDRAIL END ANCHOR  
TYPE SPECIAL  
MASH STANDARDS  
FOR EXISTING BRIDGES  
WITH CONCRETE RAIL SYSTEMS

SCALE  
NOT TO SCALE