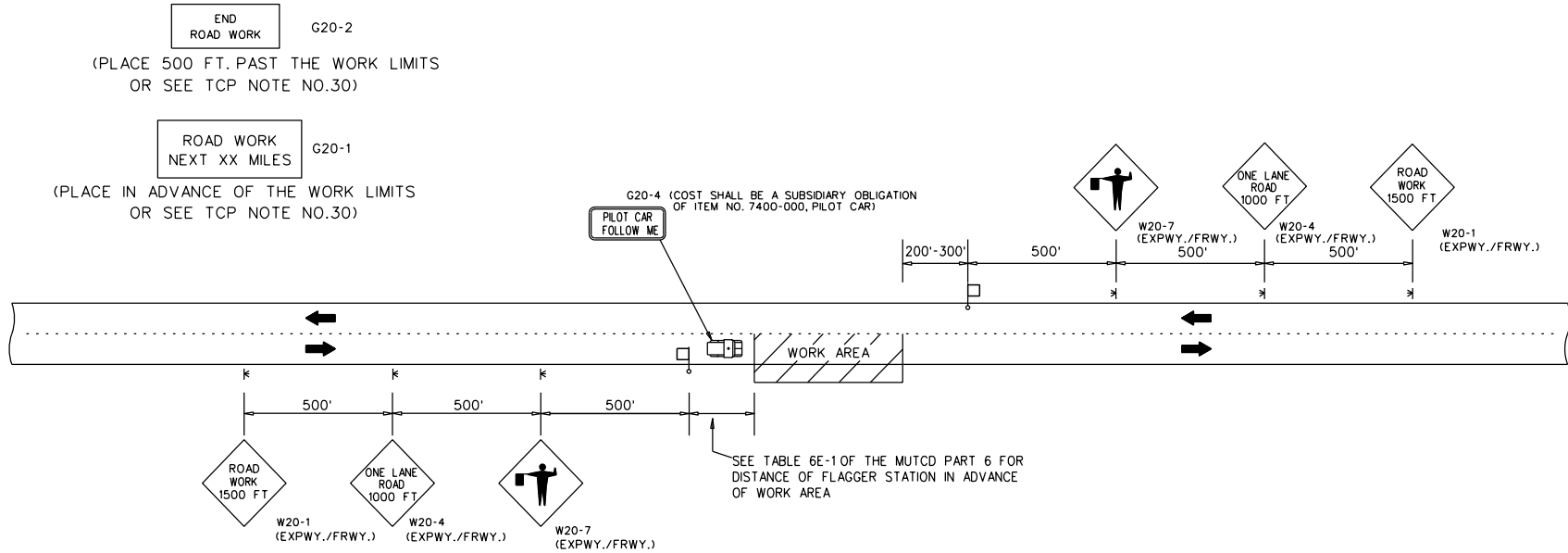


TRAFFIC CONTROL PLAN DETAILS FOR LANE CLOSURE TWO LANE HIGHWAY PILOT CAR APPLICATION

PROJECT NO.	FISCAL YEAR	SHEET NO.



TWO LANE HIGHWAY - ONE LANE CLOSED
FOR USE WITH PILOT CAR
NOT TO SCALE



(PLACE WITHIN 500 FT. OF THE WORK LIMITS OR SEE TCP NOTE NO.30)



SEE TCP NOTE NO.30

REVISIONS		ALABAMA DEPARTMENT OF TRANSPORTATION
01/30/07 - REVISED NOTE - ADDED PAY PROVISIONS FOR W20-1(MIN) SIGN	REVISED LANE CLOSURE DIMENSIONS 12/16/19	LOCAL TRANSPORTATION BUREAU
11/27/-7 - DELETED DETAILS FOR W20-1(MIN) SIGN	ADDED R16-3 and R16-3a SIGNS 4/5/21	
08/14/08 - REVISED NOTE NUMBER REFERENCES	ADDED REFERENCE TO TCP NOTE NO. 30 4/13/21	TRAFFIC CONTROL PLAN DETAILS FOR LANE CLOSURE TWO LANE HIGHWAY PILOT CAR APPLICATION NOT TO SCALE
07/16/09 - ADDED LEGEND	ADDED R16-3b SIGN 11/15/21	
04/05/10 - ADDED PILOT CAR DETAIL		
10/30/12 - REVISED SIGNS BASED ON SIGN REVISION IN THE 2013 SPEC./STD. DRAWING BOOK		
10/6/17 - CHANGED BUREAU NAME		

LEGEND	
⊞	TEMPORARY MOUNTED SIGN
⊡	POST MOUNTED SIGN
▨	CONES
⊠	FLAGGER