

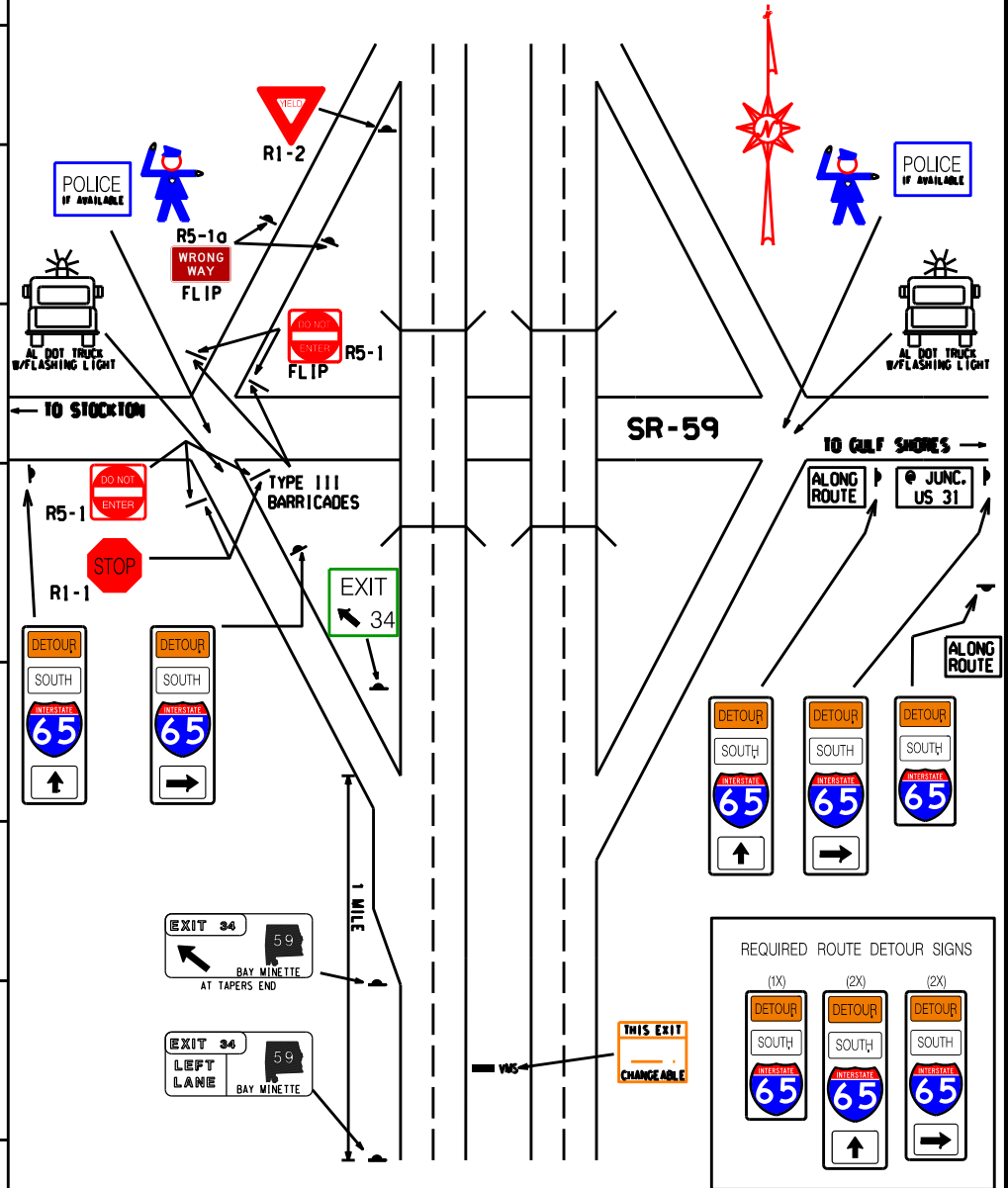
3

CRAIG PHILLIPS WILL WHALEY

LOCATION	PERSONNEL	CLASS	TRUCK NUMBER	CELL NO.	MISC. EQUIPMENT
Site 3 Exit 34 SR-59	PAUL PATTERSON	TMT III - CL	ST-16740 VAN	251-895-0942	W/ Trailer
	LINCOLN MUND	TMT I			
	MARSHALL COLEMAN	TMT II			
	BUDDY BURRIS	TMT II	ST-15793 PICKUP	251-895-0418	W/ VMS
	DAVID CAMPIS	TMT II			
	ANGELA STEVERSON	TMT I			

22	MOBILE AREA IN PLACE PERSONNEL
23	TL/ATL IN PLACE
26	READY TO IMPLEMENT
30	NOTIFY TL TO BEGIN PROCEDURE
45	SB ATL PASSED
57	ATL'S NB HAVE PASSED
59	INTERCHANGE CLEAR
67	TRAFFIC REVERSED
104	INTERCHANGE CLEAR
114	TRAFFIC NORMAL

EXIT 34 @ SR-59



REQUIRED	
2	TYPE III BARRICADES W/STOP SIGNS W/DO NOT ENTER
1	YIELD SIGNS
2	LAW ENFORCEMENT
5	ROUTE DETOUR SIGNS
1	EXIT AHEAD SIGNS
1	EXIT LT. LN. SIGN
1	EXIT SERVICES SIGN
1	EXIT ARROW SIGN

NOTE : COVER ALL
INAPPROPRIATE SIGNS

