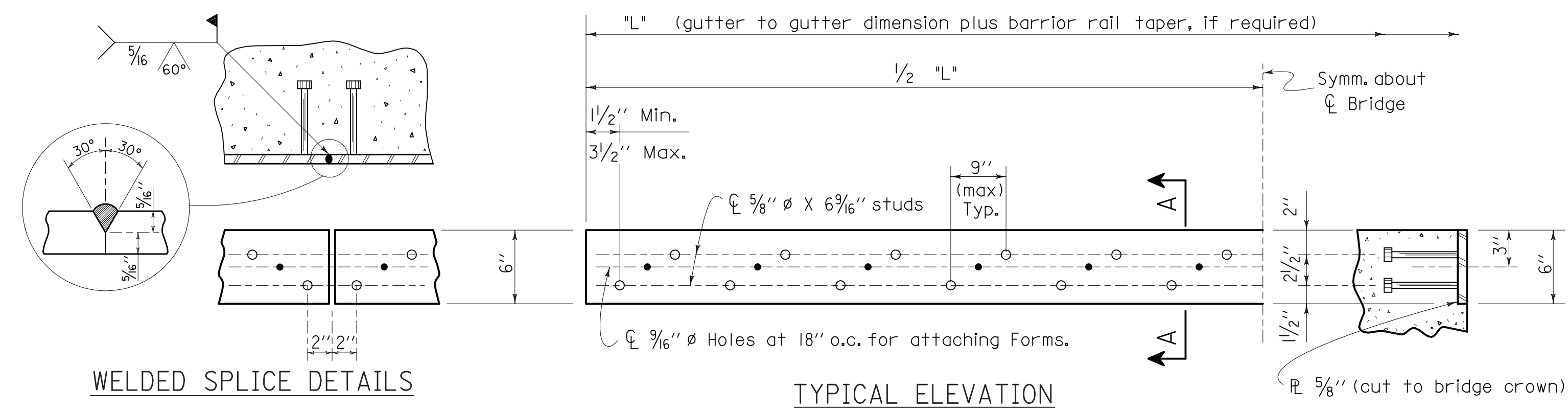


2" SHEET REFERENCE



WELDED SPLICE DETAILS

NOTE: Where a welded splice is used, place one (1) stud two inches (2") each side of the welded splice \ominus as shown.

A full penetration groove weld shall be used for shop welded splices.

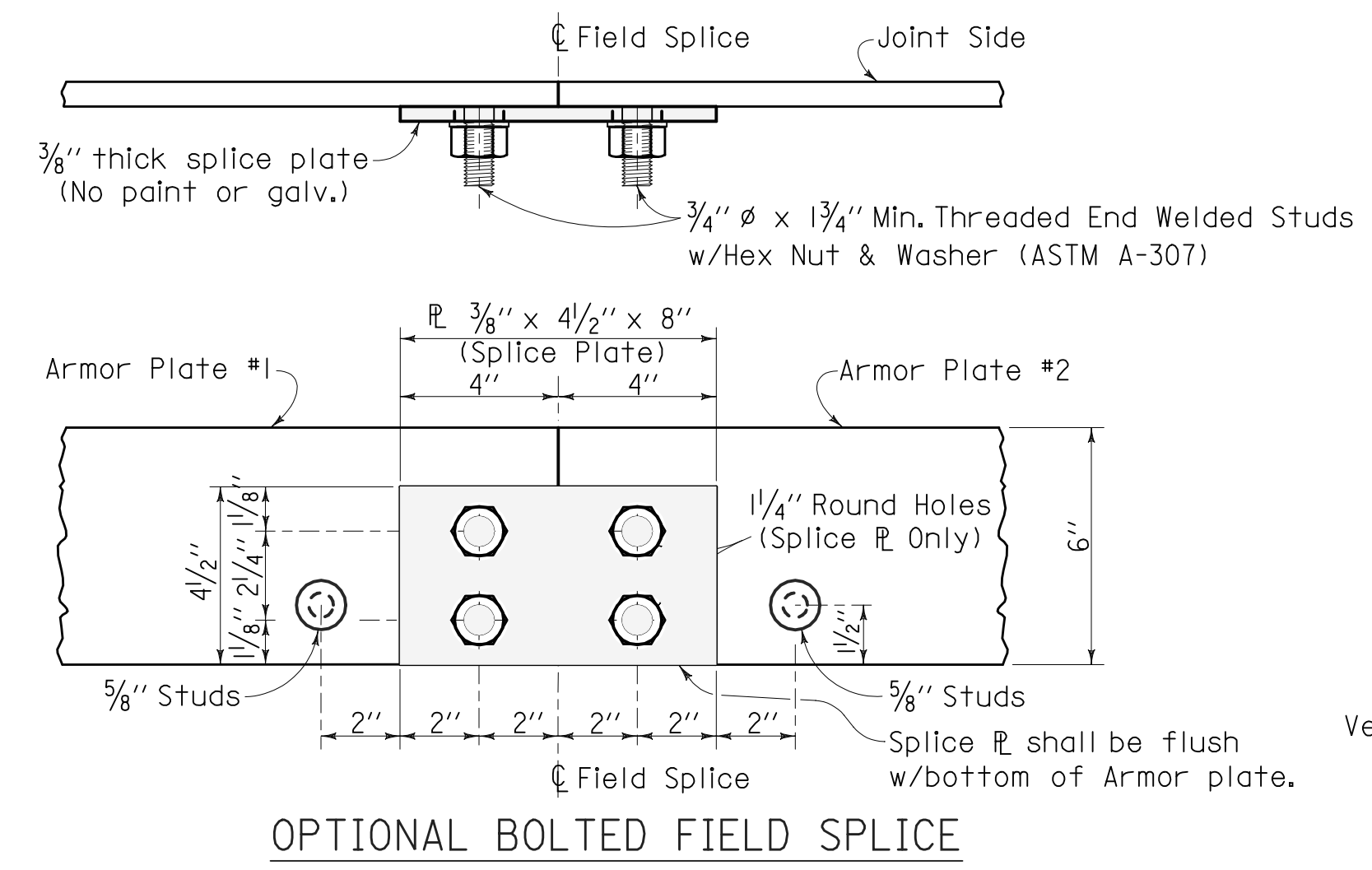
TYPICAL ELEVATION

Weight of plate = 12.76 lb./ft.
Weight of $5/8"$ ϕ x $6 9/16"$ stud = 0.65 lbs. each.

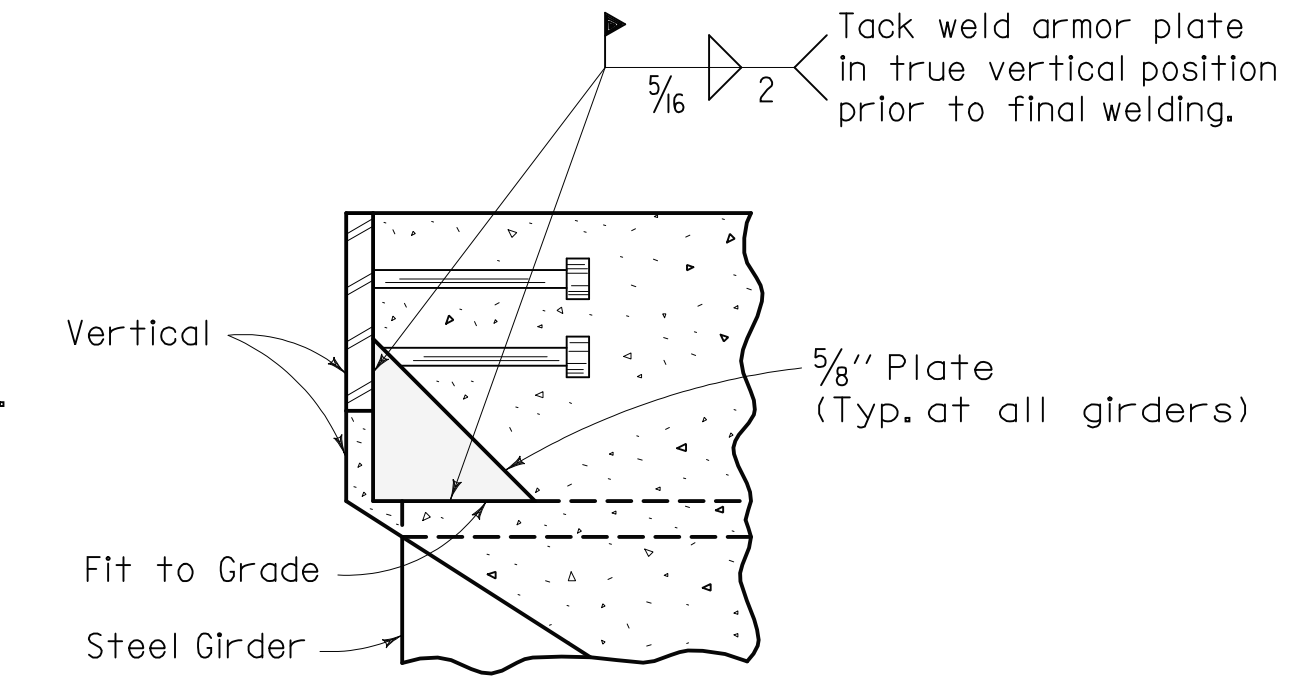
Weight of optional bolted splice plate and $3/4"$ ϕ x $1 3/4"$ studs will not be measured for payment. Cost shall be included in payment for armor plates.

SECTION A - A

NOTE: Any burrs on roadway edge of \bar{R} shall be ground smooth.



OPTIONAL BOLTED FIELD SPLICE

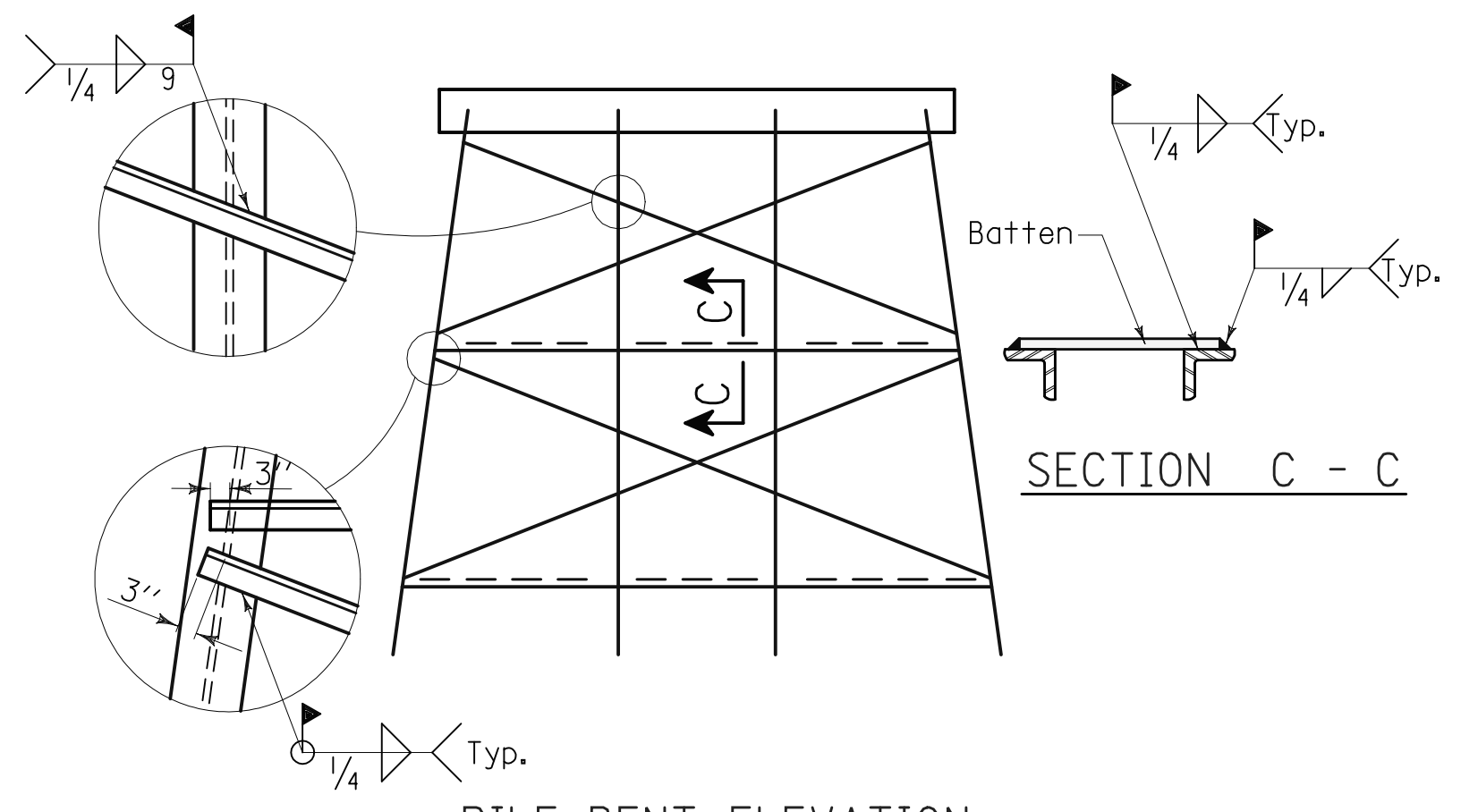


ARMOR PLATE CONNECTION DETAIL

NOTE: Armor plates shall be galvanized according to AASHTO M III and the following, unless otherwise noted on the contract plans.

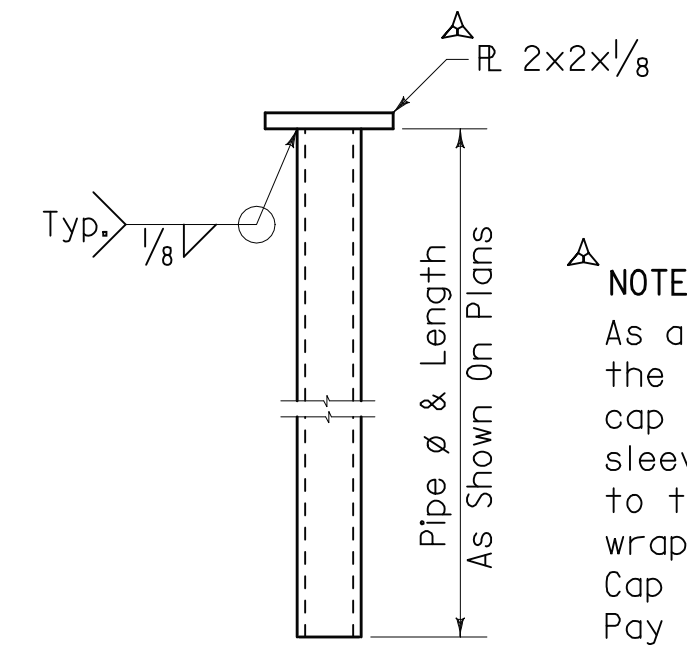
1. The armor plate shall be returned to the fabrication shop for inspection after galvanization.
2. Areas which are to be welded after galvanization shall have the galvanization removed prior to welding.
3. If the field splice is welded, cold galvanization shall be used to repair these areas and any damaged areas.
4. Number of bolted field splices shall be held to a minimum dependent on construction requirements and approval of the Engineer.

BRIDGE JOINT ARMOR PLATE



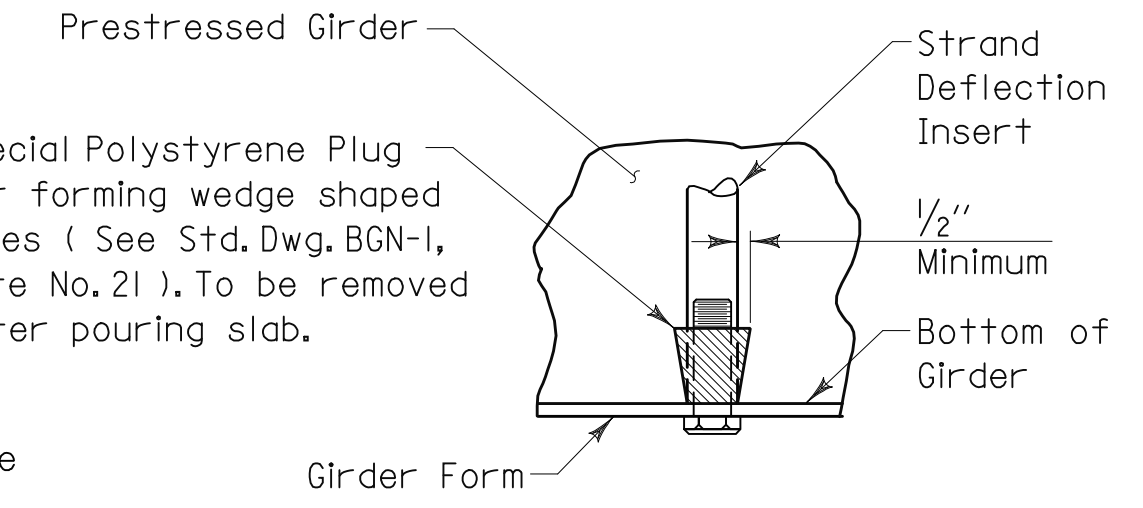
PILE BENT ELEVATION

TYPICAL WELDING FOR SWAY BRACING AND BATTENS



PIPE SLEEVE

NOTE: As an option to the 2" x 2" x 1/8" plate, the contractor may provide a polyethylene cap or insert to seal the end of the pipe sleeve. The polyethylene seal shall be secured to the pipe sleeves prior to shipment by wrapping with duct tape. Payment for Polyethylene Cap or Insert and Duct Tape shall be included in Pay Item 508 A "lbs Structural Steel".



HOLES @ HOLD DOWN POINTS

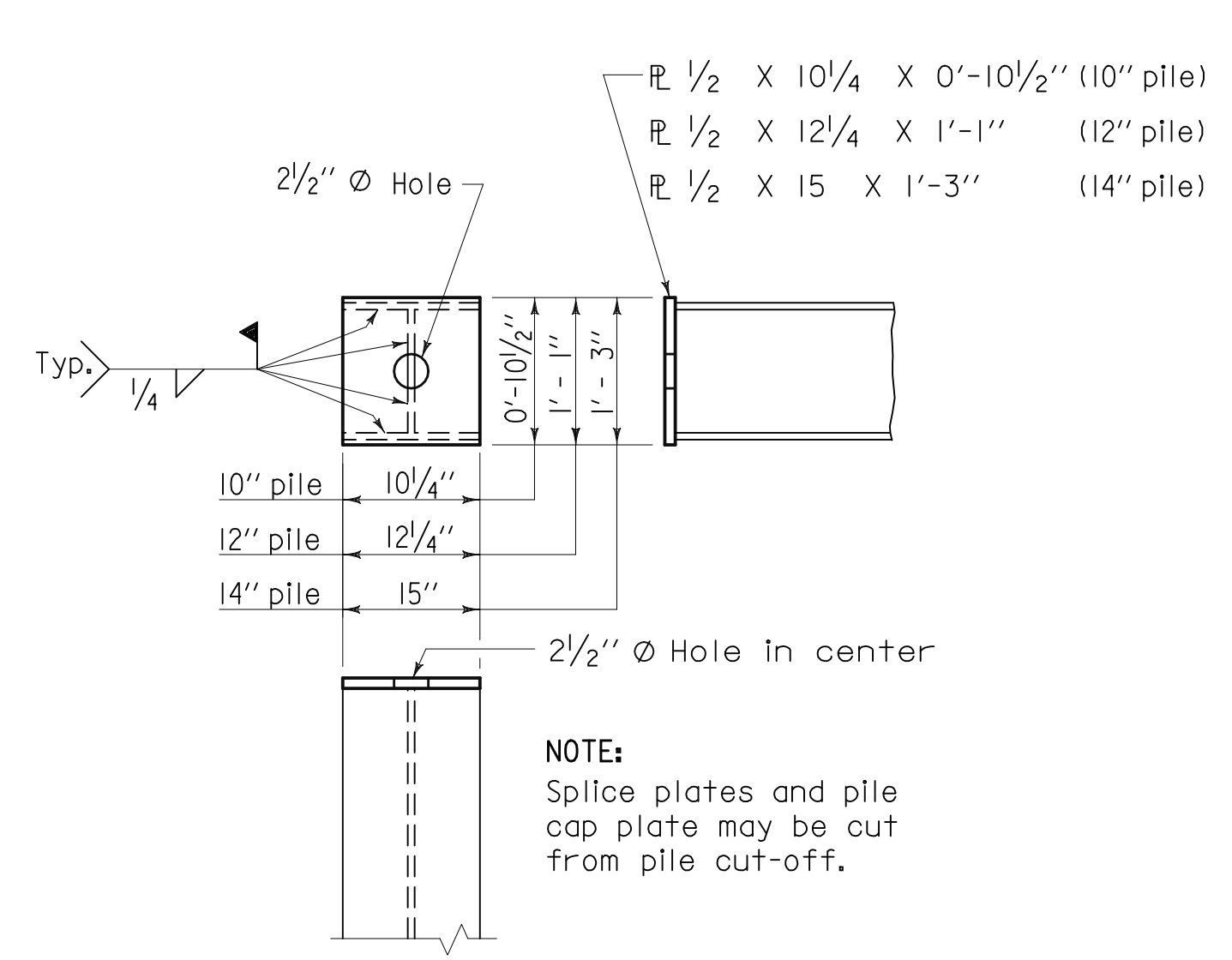
FIELD WELDING

The following field welds may be made by an electric arc welder who demonstrates to the project engineer that he is a proficient welder.

1. Pile cap plates and pile cap channels to piles.
2. Field splices in bridge joint armor plates.

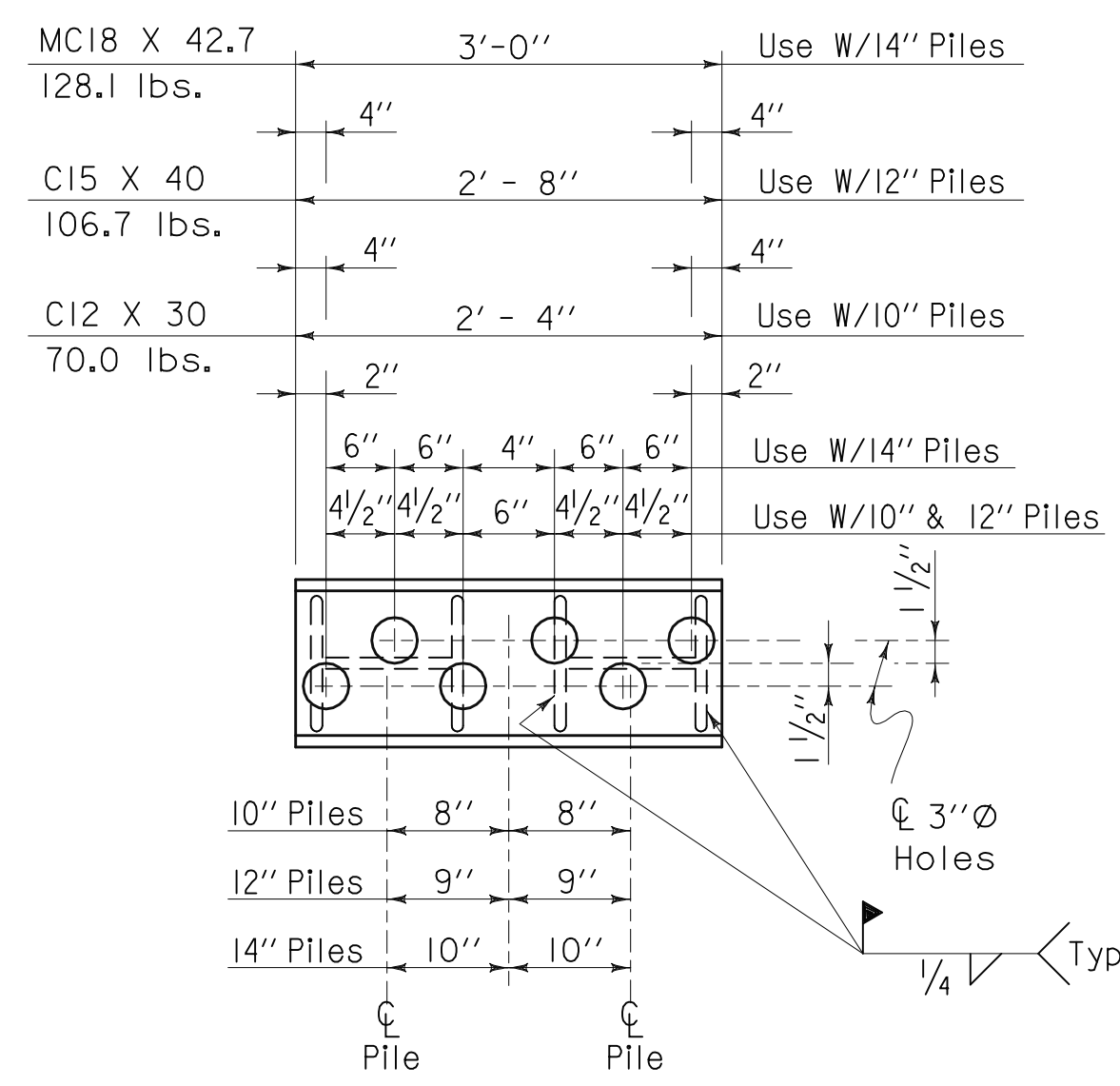
This welder is not required to have a qualification card issued by the Alabama Department of Transportation. All other field welds shall be performed by welders who have current Alabama Department of Transportation welders qualification cards.

No field welding will be permitted on steel girders or steel caps unless otherwise noted on the bridge drawings, or approved in writing by the Bridge Engineer.

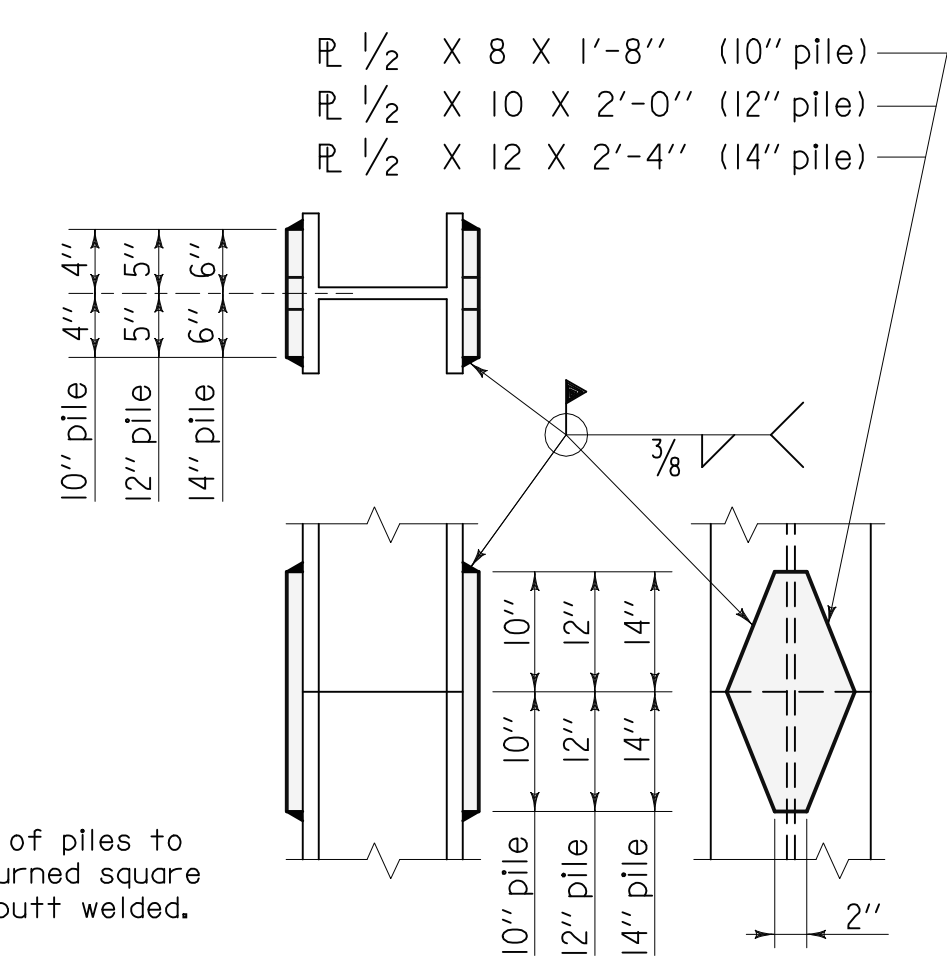


PILE CAP PLATE

NOTE: Splice plates and pile cap plate may be cut from pile cut-off.



PILE CAP CHANNEL



PILE SPLICE

NOTE: Ends of piles to be burned square and butt welded.

NOTE: A pre-fabricated H-Pile Splicer may be used in lieu of the splice shown. The contractor shall furnish the manufacturer's recommendations for Splicer installation and Splicer details to the Construction Engineer for approval.

THESE DRAWINGS REPRESENT DESIGNS PREPARED FOR USE BY THE ALABAMA DEPARTMENT OF TRANSPORTATION AND ARE NOT TO BE COPIED, REPRODUCED, ALTERED, OR USED BY ANYONE OR ANY ORGANIZATION, WITHOUT THE EXPRESSED WRITTEN CONSENT OF THE ALABAMA DEPARTMENT OF TRANSPORTATION REPRESENTATIVE AUTHORIZED TO APPROVE SUCH USE. ANYONE MAKING UNAUTHORIZED USE OF THESE DRAWINGS MAY BE PROSECUTED TO THE FULLEST EXTENT OF THE LAW.

ALABAMA DEPARTMENT OF TRANSPORTATION		STANDARD	
THIS STANDARD TO BE USED WITH ANY OF THE FOLLOWING STANDARDS		FOR STANDARD DETAILS	
REVISIONS		ESTIMATED QUANTITIES	
1. Removed Minimum Length of Armor Plate Note. 06-22-09 L.E.D.		COMPUTED BY:	
DESIGN SECTION SUPERVISOR		VERIFIED BY:	
ASSISTANT BRIDGE ENGINEER		DESIGNED BY:	
BRIDGE ENGINEER		SCALE:	
CHECKED BY:	DRAWN BY: Ronald Todd	STANDARD DWG. NO.	
DATE CHECKED: 07-17-07	DATE DRAWN:	I-131	
		SHEET NO. 1 OF 8	

U:\Standards\Bridges\uscustmisc\2010 StandardsBook\131.dgn

Plotted: 21-Aug-2009 11:25 AM