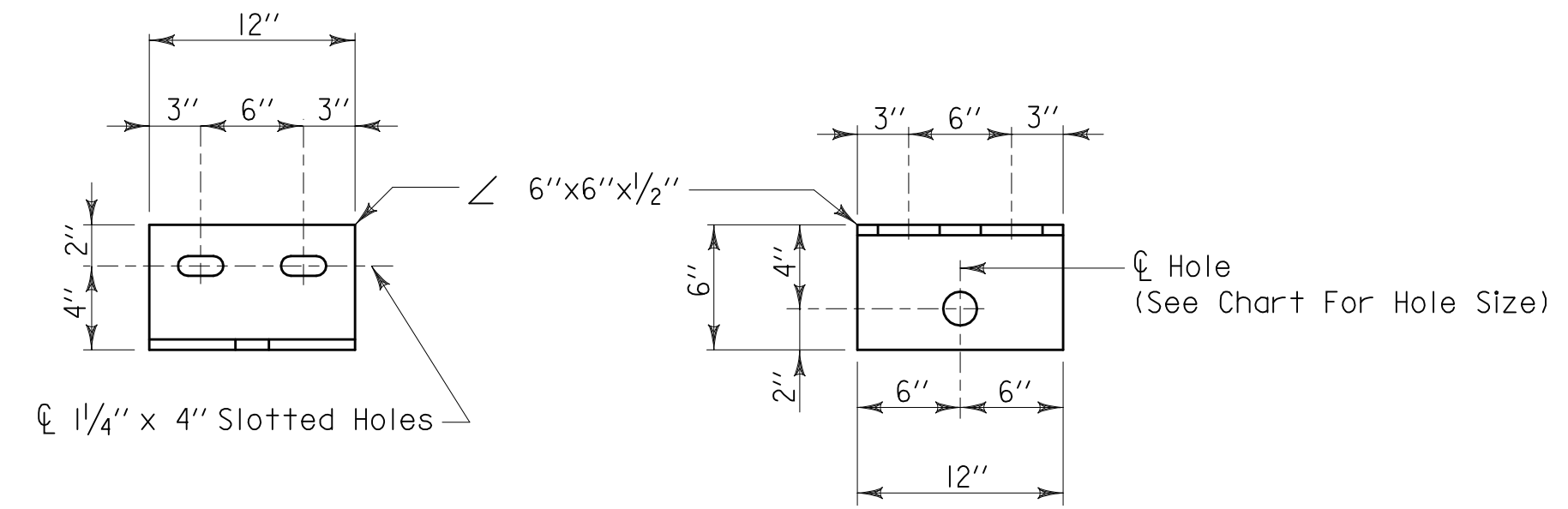
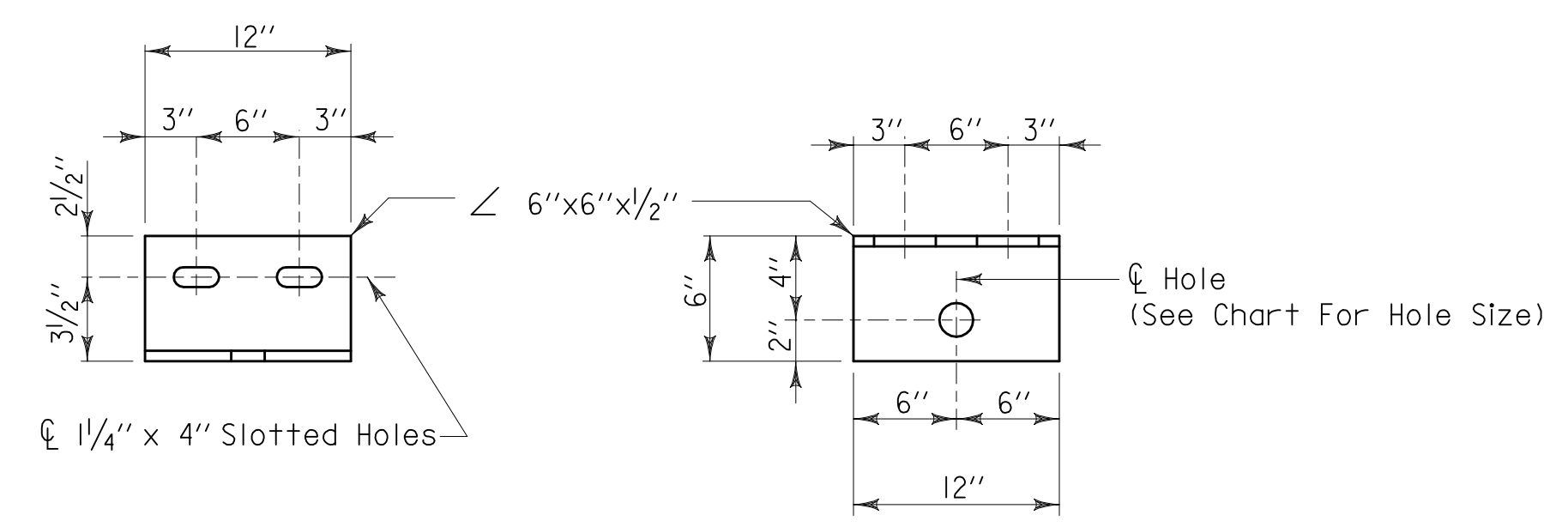


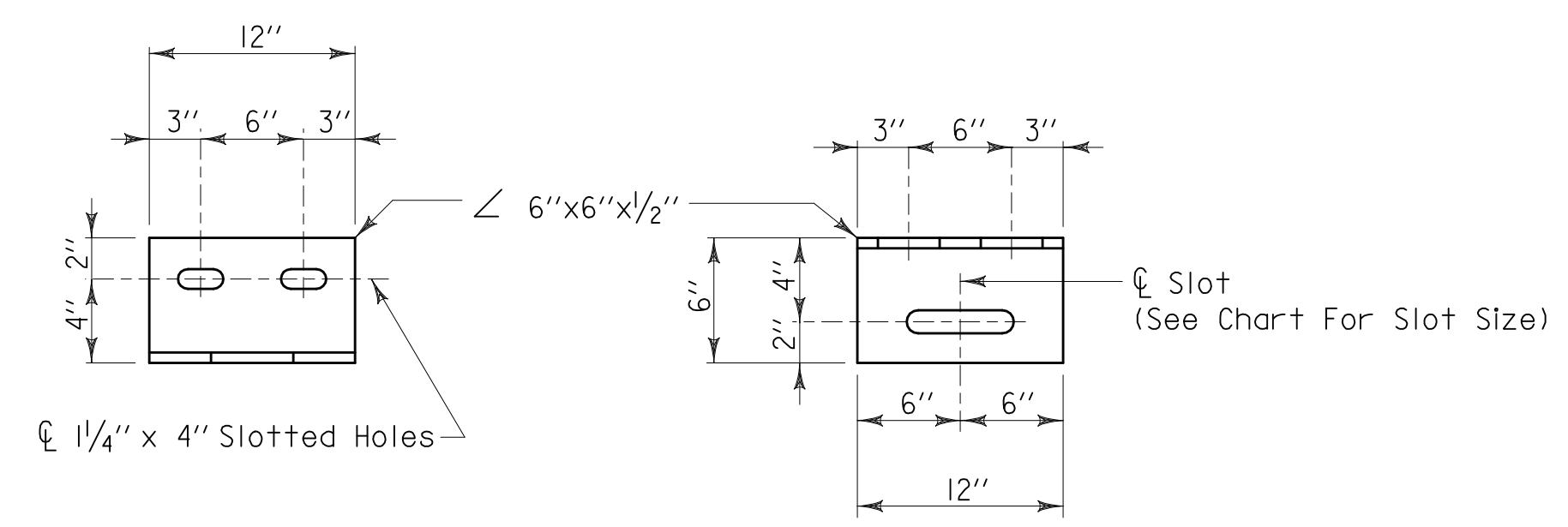
2" SHEET REFERENCE



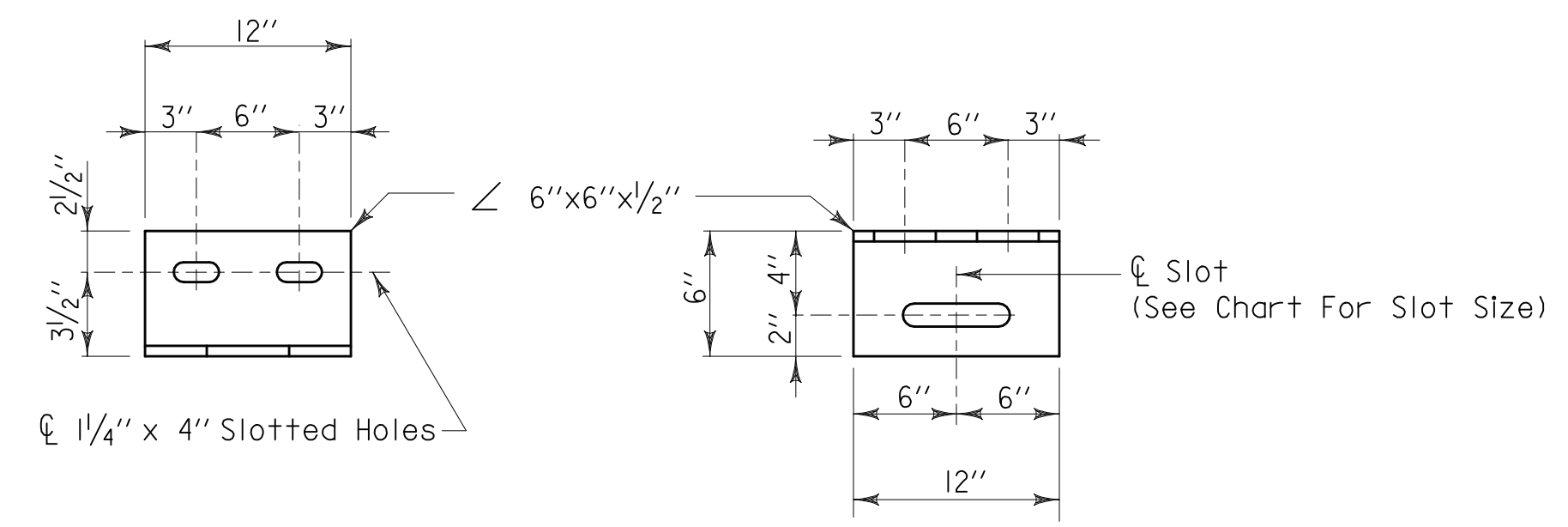
AASHTO TYPE GDR. CLIP ANGLE (FIXED)
19.6 lbs. Each



BULB TEE TYPE GDR. CLIP ANGLE (FIXED)
19.6 lbs. Each

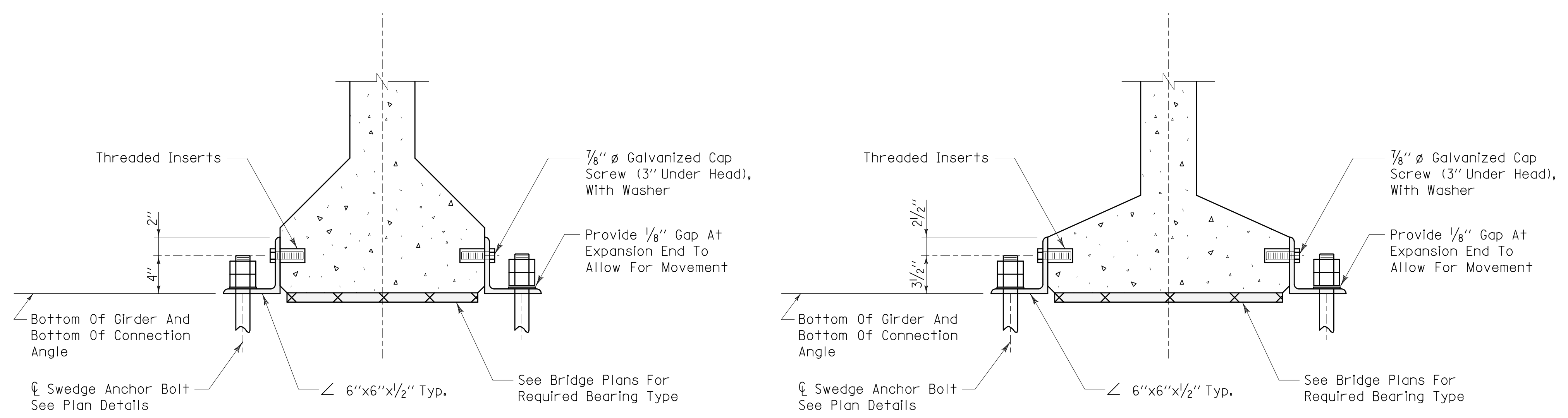


AASHTO TYPE GDR. CLIP ANGLE (EXP.)
19.6 lbs. Each



BULB TEE TYPE GDR. CLIP ANGLE (EXP.)
19.6 lbs. Each

CLIP ANGLE HOLE & SLOT SIZE		
BOLT	ROUND	SLOT
AB-1	1 1/4"	1 1/4" x 7"
AB-2	1 1/2"	1 1/2" x 7"
AB-3	1 3/4"	1 3/4" x 7"

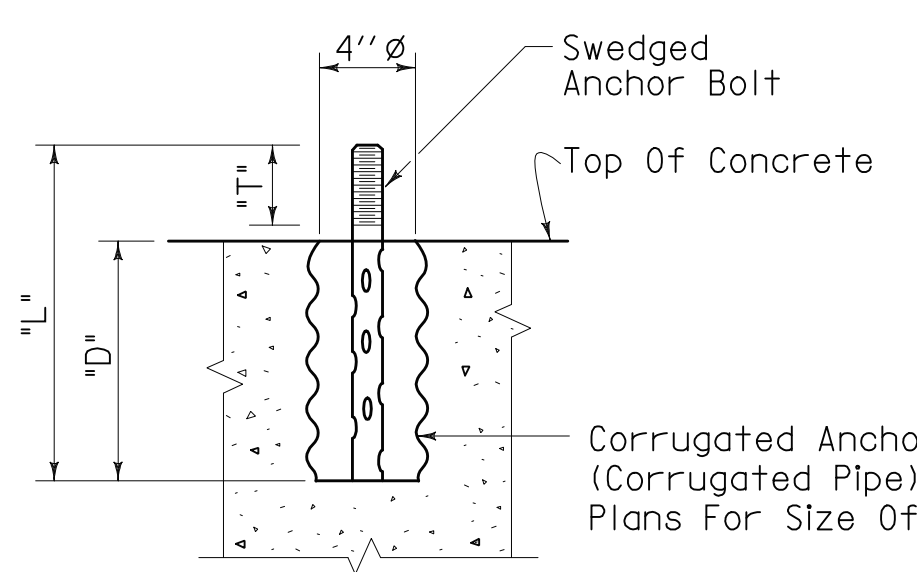


END VIEW AASHTO TYPE GDR.

END VIEW BULB TEE TYPE GDR.

CONNECTION ANGLE DETAILS

NOTE: Threaded inserts and 7/8" ϕ x 3" cap screws with 1-washer each are to be included in the price bid per lin. ft. of P.P.C. girder. Swedge bolts w/2 hex nuts and 1-washer each, and angles 6"x6"x1/2" are to be included in the price bid per pounds of structural steel. Angles 6"x6"x1/2" shall be hot-dipped galvanized in accordance with AASHTO M-III. 7/8" ϕ cap screws, swedge bolts and washers shall be hot-dipped galvanized in accordance with AASHTO M-232. Damaged galvanized surface not to be encased in concrete, shall be repaired in accordance with Standard Specification 855.15



ANCHOR BOLT DIMENSIONS					
BOLT TYPE	DIAM.	LENGTH *L*	THREADS *T*	EMBED *D*	ASSEMBLY WEIGHT (Bolt, 2 Nuts & 1 Washer)
AB-1	1"	1'-10"	5"	1'-4"	5.85lbs.
AB-2	1 1/4"	2'-1"	6"	1'-6"	10.44lbs.
AB-3	1 1/2"	2'-4"	6"	1'-9"	16.89lbs.

NOTE: Swedge anchor bolts shall be set in 4" ϕ blockouts, or drilled or cast-in-place using a template.

Provide each anchor bolt well with a readily removable watertight cap. Details to be approved by the engineer. The formwork, debris and standing water shall be removed from each well immediately prior to capping. It is mandatory that caps be in place throughout periods during which below freezing temperatures can be expected to occur. The contractor shall ensure that any water trapped in the wells does not freeze.

Remove corrugated well form prior to grouting around anchor bolts. Do not grout anchor bolts until girders have been completely erected, adjusted if necessary after erection, and approved by the engineer.

ANCHOR BOLT AND WELL DETAILS

THESE DRAWINGS REPRESENT DESIGNS PREPARED FOR USE BY THE ALABAMA DEPARTMENT OF TRANSPORTATION AND ARE NOT TO BE COPIED, REPRODUCED, ALTERED, OR USED BY ANYONE OR ANY ORGANIZATION, WITHOUT THE EXPRESSED WRITTEN CONSENT OF THE ALABAMA DEPARTMENT OF TRANSPORTATION REPRESENTATIVE AUTHORIZED TO APPROVE SUCH USE. ANYONE MAKING UNAUTHORIZED USE OF THESE DRAWINGS MAY BE PROSECUTED TO THE FULLEST EXTENT OF THE LAW.

ALABAMA DEPARTMENT OF TRANSPORTATION THIS STANDARD TO BE USED WITH ANY OF THE FOLLOWING STANDARDS		STANDARD FOR STANDARD DETAILS	
DESIGN SECTION SUPERVISOR	REVISIONS	I-131 SHEET NO. 7 OF 8	
ASSISTANT BRIDGE ENGINEER	CHECKED BY:		
BRIDGE ENGINEER	DATE CHECKED: 10-16-03		
	DATE DRAWN:		