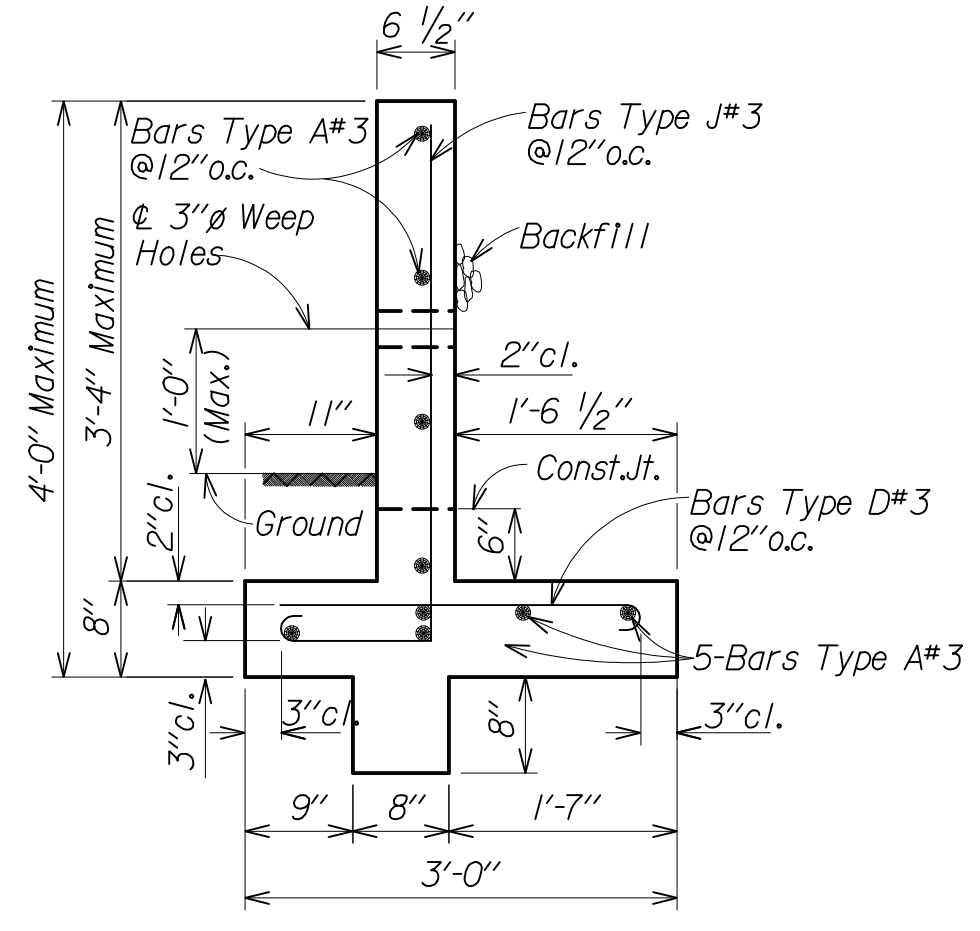


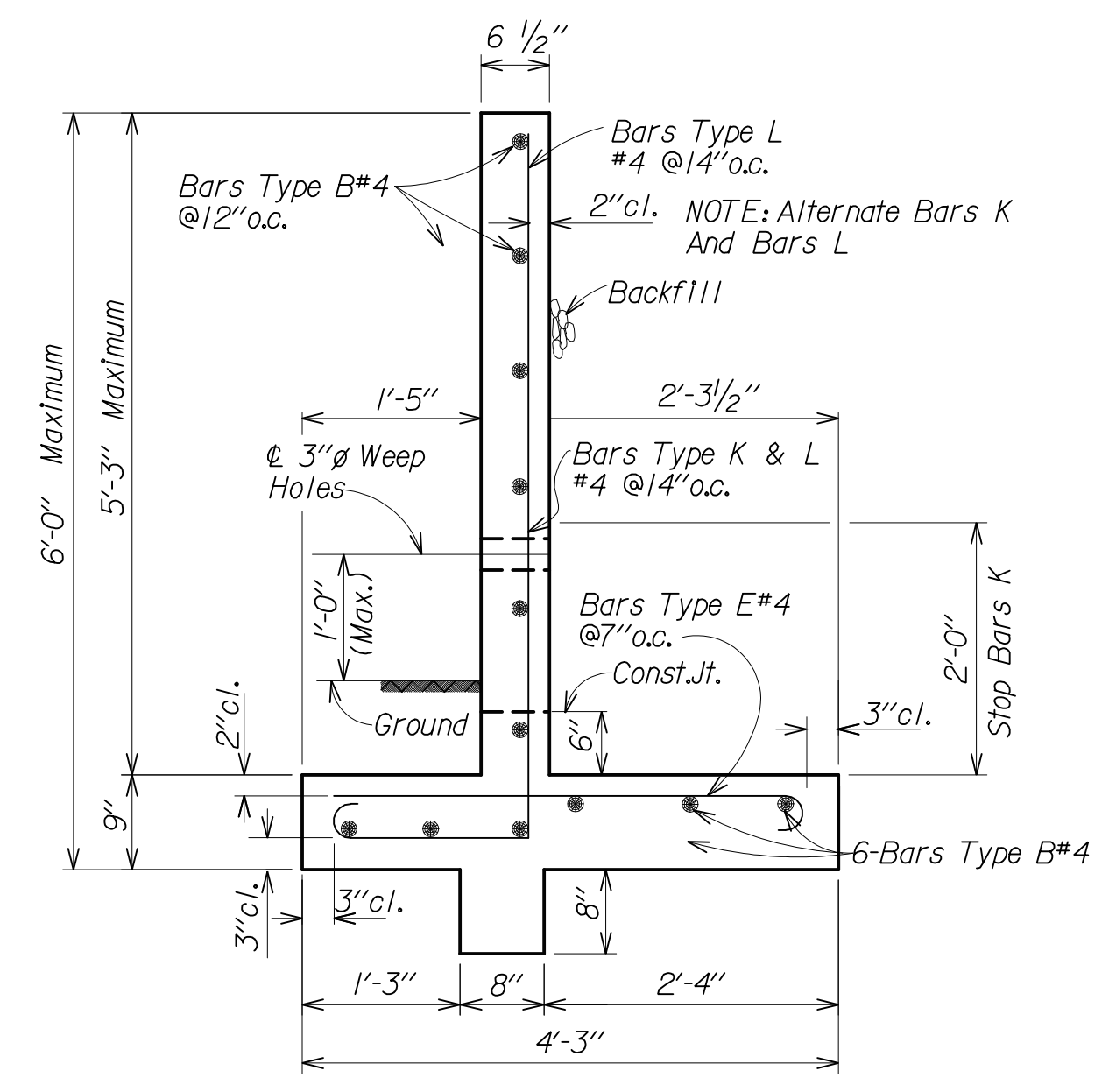
0 1" 2" SHEET REFERENCE

U:\Standards\Bridges\custmisc\2010 StandardsBook\w104.dgn

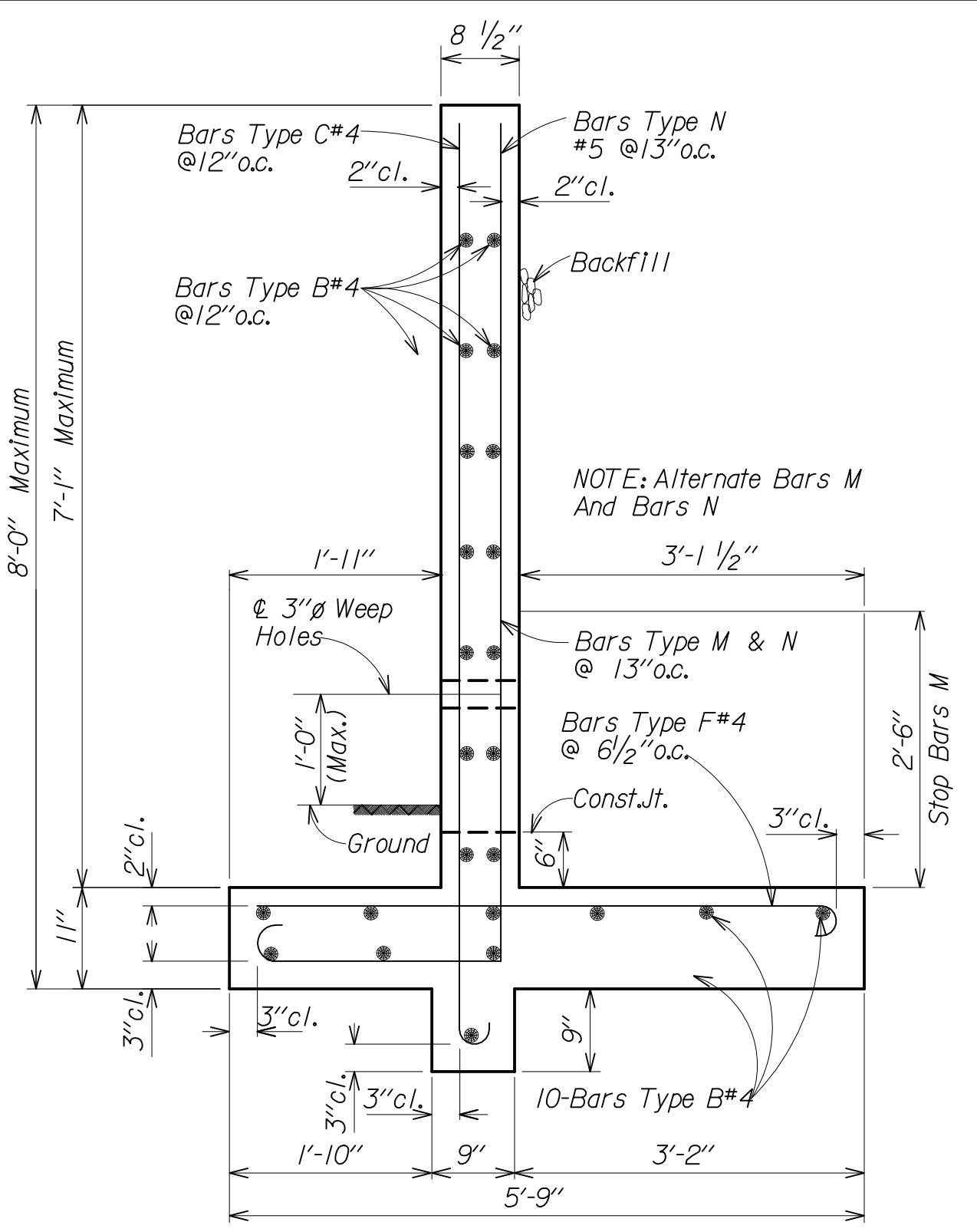
Plotted: 21-Aug-2009 11:38 AM



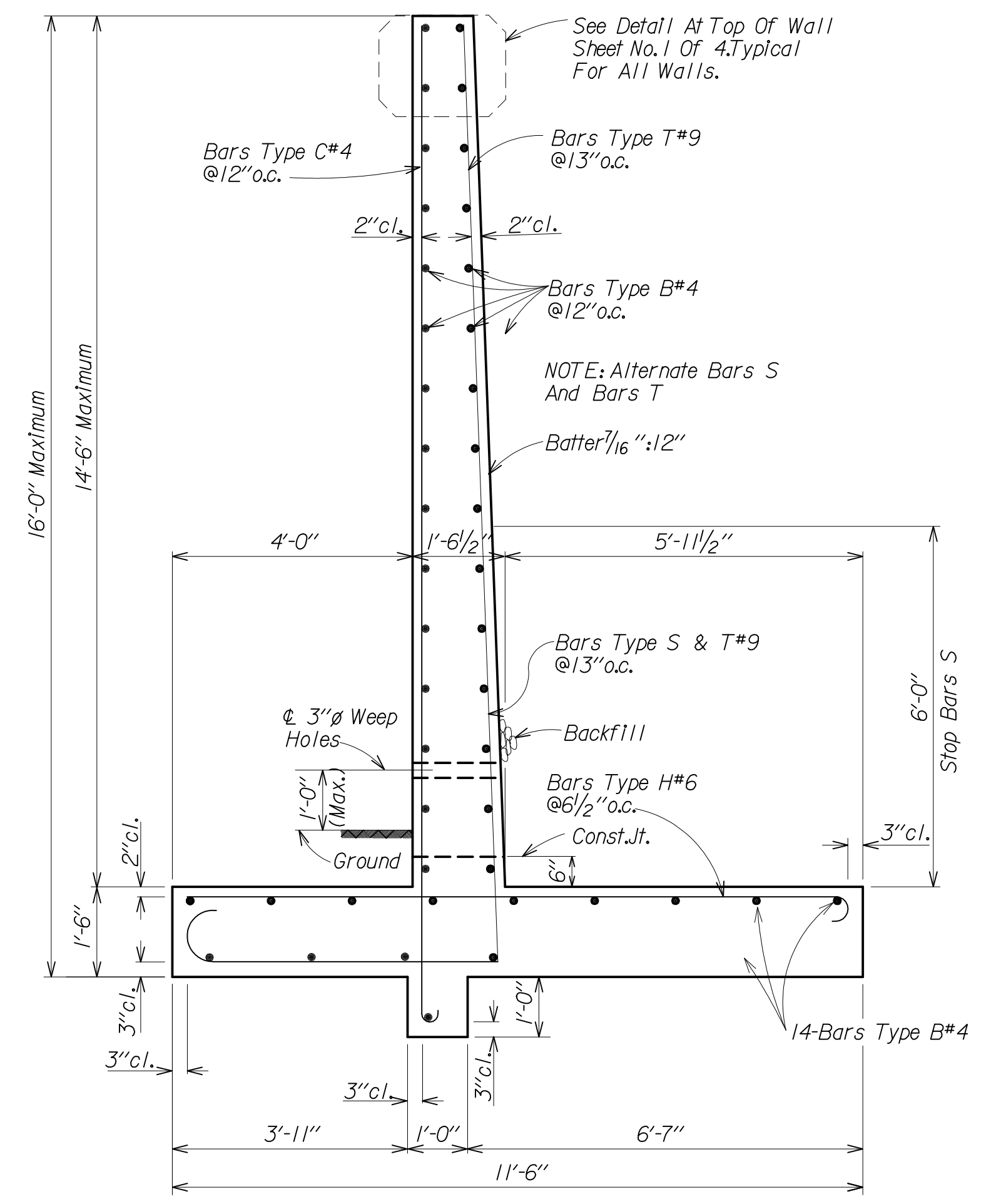
**0' To 4'-0" RETAINING WALL**  
Scale: 3/4" = 1'-0"



**4'-0" To 6'-0" RETAINING WALL**  
Scale: 3/4" = 1'-0"

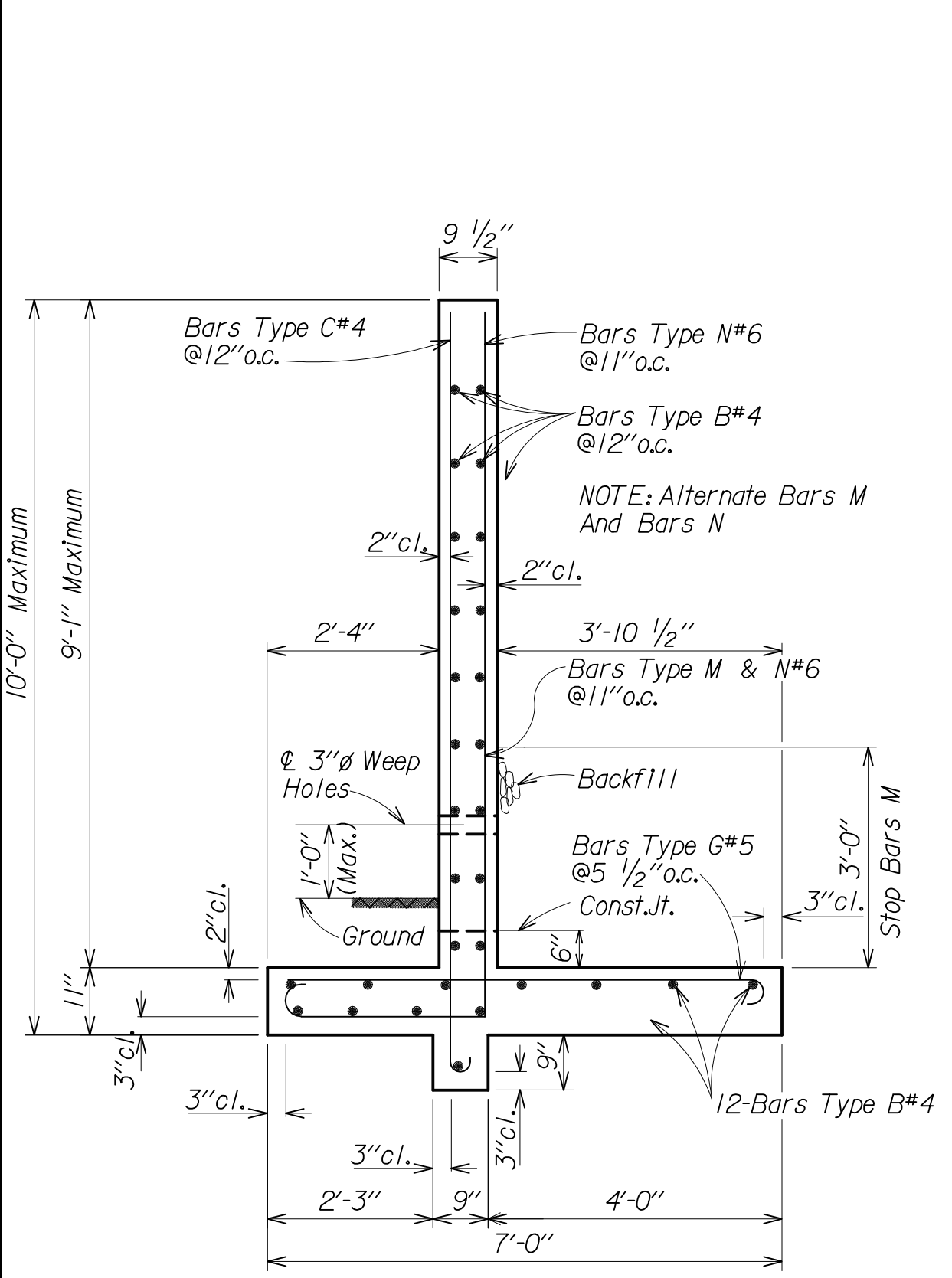


**6'-0" To 8'-0" RETAINING WALL**  
Scale: 3/4" = 1'-0"

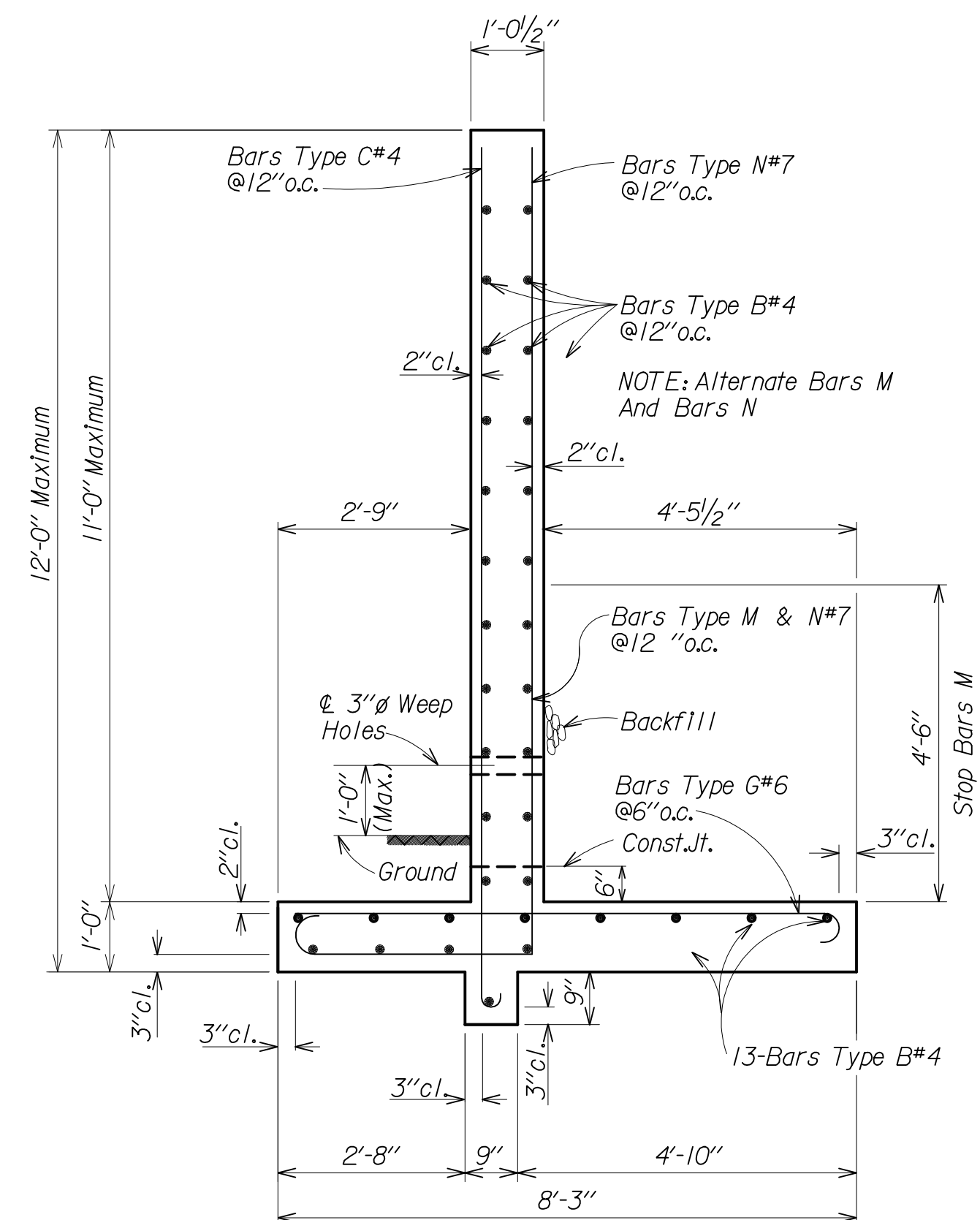


**14'-0" To 16'-0" RETAINING WALL**  
Scale: 1/2" = 1'-0"

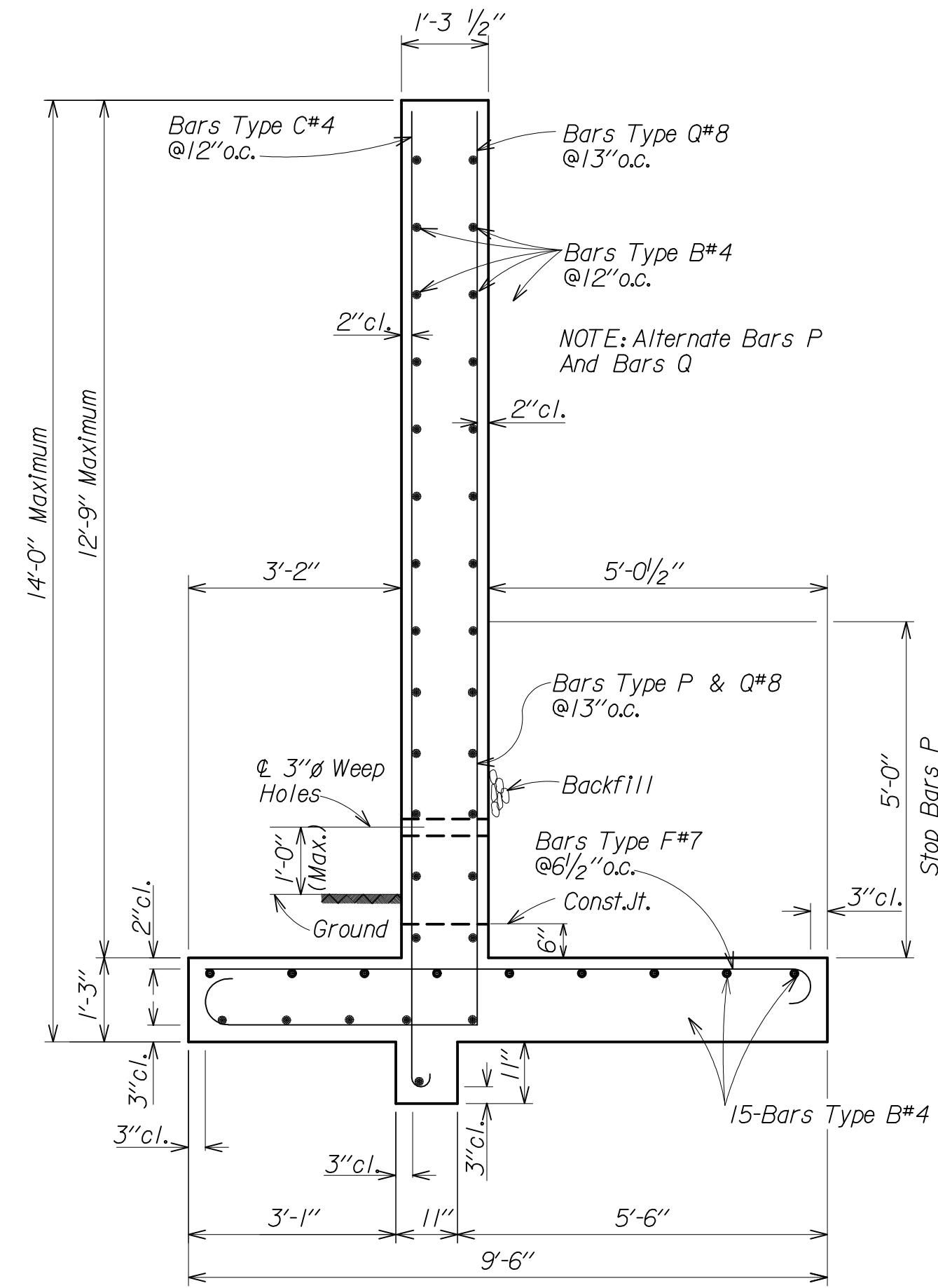
NOTE: The Retaining Wall Designs On Sheets 2 Thru 4 Are Based On A 3000 psf Minimum Allowable Soil Bearing Pressure.  
NOTE: Retaining Walls Shown 0' To 16' In Height May Be Used For Level Or Sloping Backfill.



**8'-0" To 10'-0" RETAINING WALL**  
Scale: 1/2" = 1'-0"



**10'-0" To 12'-0" RETAINING WALL**  
Scale: 1/2" = 1'-0"



**12'-0" To 14'-0" RETAINING WALL**  
Scale: 1/2" = 1'-0"

THESE DRAWINGS REPRESENT DESIGNS PREPARED FOR USE BY THE ALABAMA DEPARTMENT OF TRANSPORTATION, AND ARE NOT TO BE COPIED, REPRODUCED, ALTERED, OR USED BY ANYONE, OR ANY ORGANIZATION, WITHOUT THE EXPRESSED WRITTEN CONSENT OF THE ALABAMA DEPARTMENT OF TRANSPORTATION REPRESENTATIVE AUTHORIZED TO APPROVE SUCH USE. ANYONE MAKING UNAUTHORIZED USE OF THESE DRAWINGS MAY BE PROSECUTED TO THE FULLEST EXTENT OF THE LAW.

DESIGN SECTION SUPERVISOR
ASSISTANT BRIDGE ENGINEER
BRIDGE ENGINEER

<b>ALABAMA DEPARTMENT OF TRANSPORTATION</b>	
THIS STANDARD TO BE USED WITH ANY OF THE FOLLOWING STANDARDS	STANDARD
REVISIONS	<b>RETAINING WALLS 0' TO 34' HEIGHTS</b>
CHECKED BY:	STANDARD DWG. NO.
DATE CHECKED: 10-17-03	<b>RW 10-4</b>
DRAWN BY: Brown	SHEET NO. 2 OF 4
DESIGNED BY:	
SCALE:	