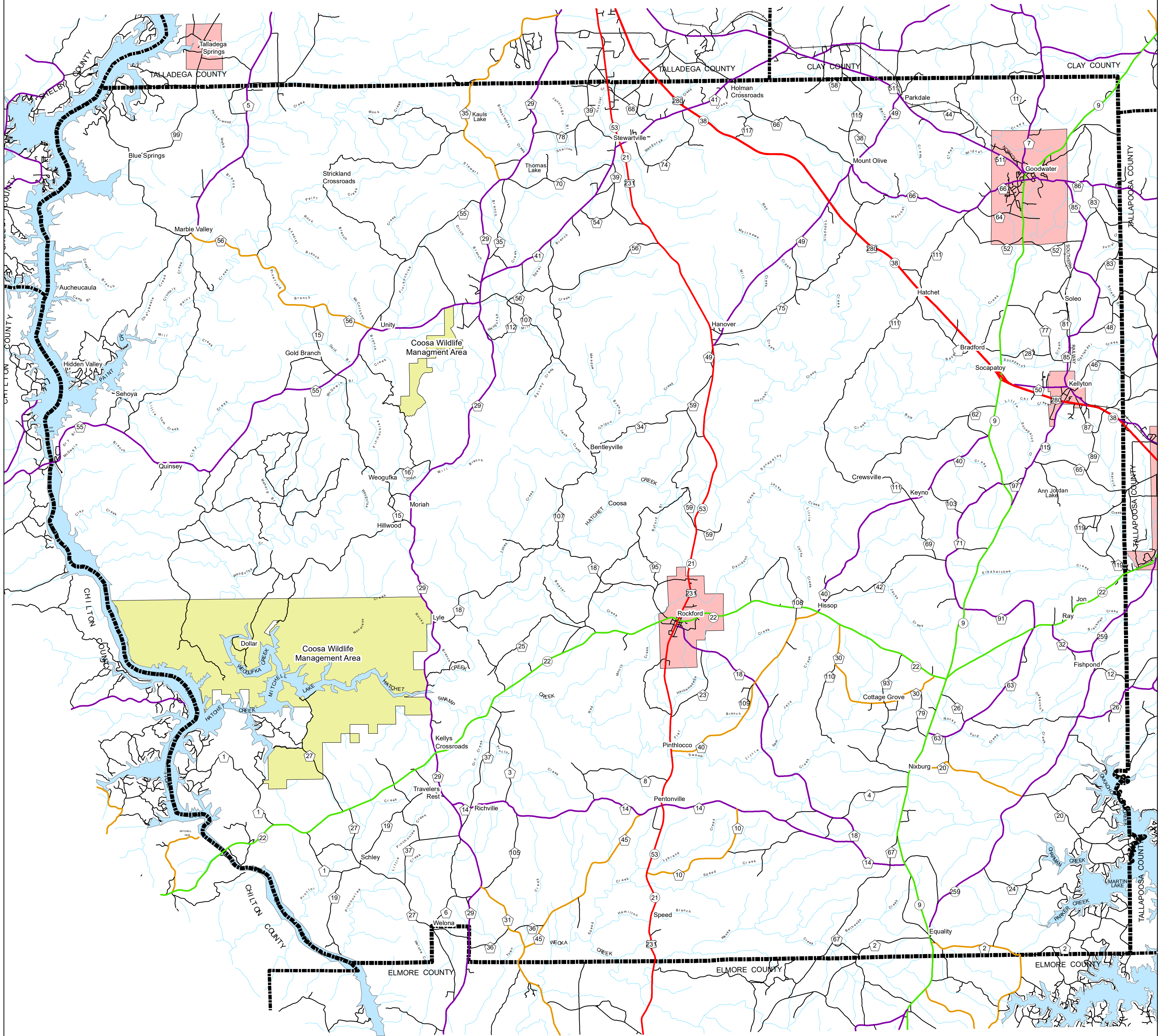
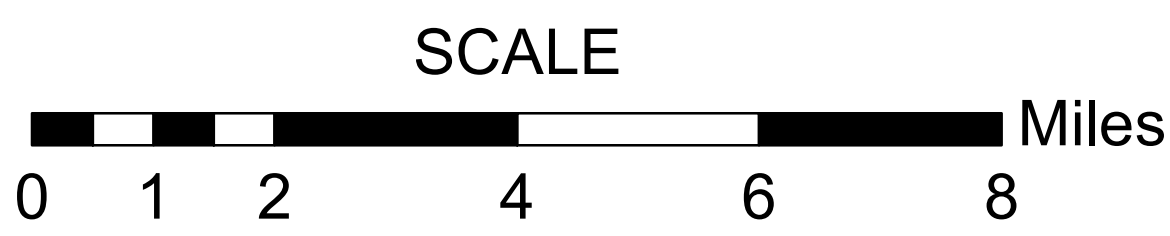


# COOSA COUNTY HIGHWAY FUNCTIONAL CLASSIFICATION SYSTEM



APPROVED SIGNATURES	
Federal Highway Administration	DATE
Bureau Chief Maintenance	DATE



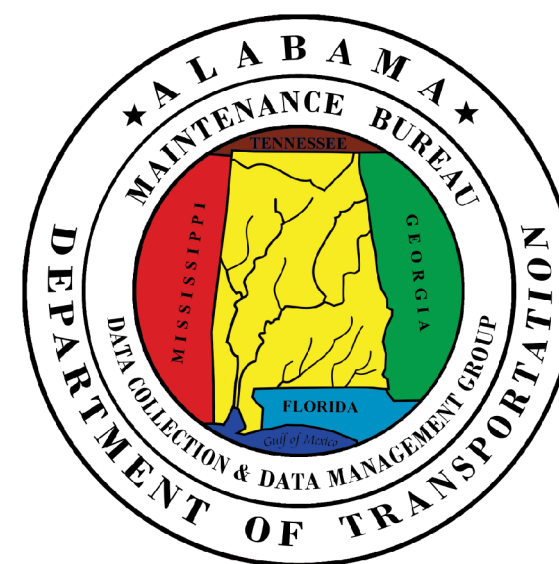
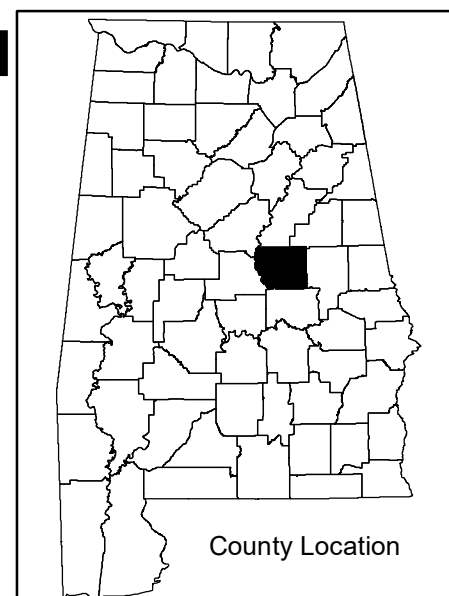
## COOSA COUNTY ALABAMA DEPARTMENT OF TRANSPORTATION Highway Functional Classification

REVISIONS

DATE	COMMENTS
July, 2021	Added New Border and Legend

*Disclaimer of Liability*  
Due to the scale of this map neither the Alabama Department of Transportation (ALDOT) or the State of Alabama or any employees and contractor thereof, make any warranty, expressed or implied, or assume any legal liability, or responsibility for the accuracy, completeness, or usefulness of any information contained on this map.

FHWA APPROVAL DATE  
DATE: July, 2021



**LEGEND**

**Highway Functional Classification**

- 1 Interstate
- 2 Principal Arterial-Other Freeways and Expressways
- 3 Principal Arterial-Other
- 4 Minor Arterial
- 5 Major Collector
- 6 Minor Collector
- 7 Local Road
- Proposed Road
- OpenWater
- Streams / Creeks
- Wildlife Management Areas
- Large Urban Area
- Small Urban Area
- State Parks
- County Boundary
- Railroad
- INTERSTATE
- U.S.
- STATE
- COUNTY
- City Limit
- Federal Lands



Federal Highway Administration  
Alabama Division Office