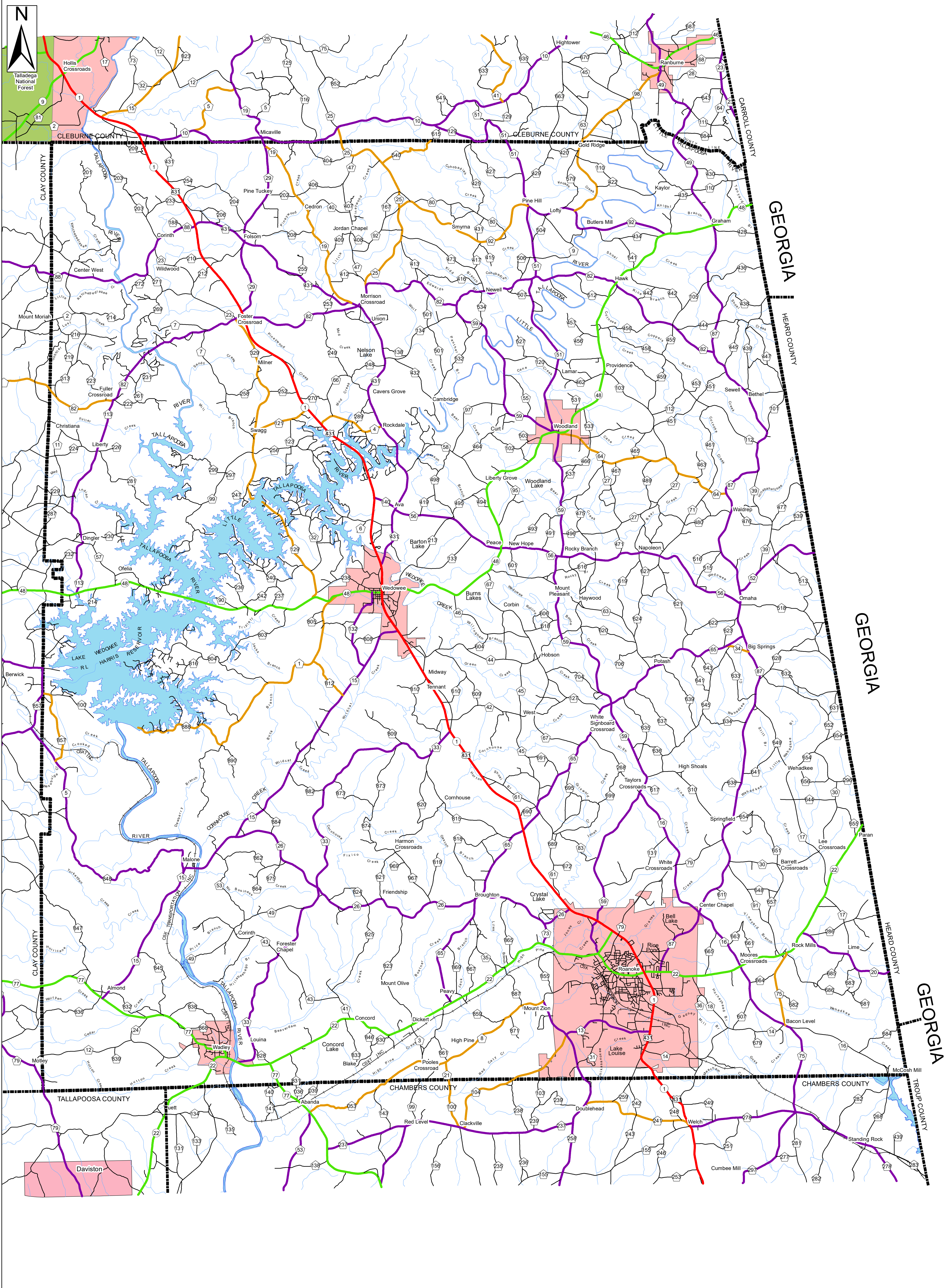
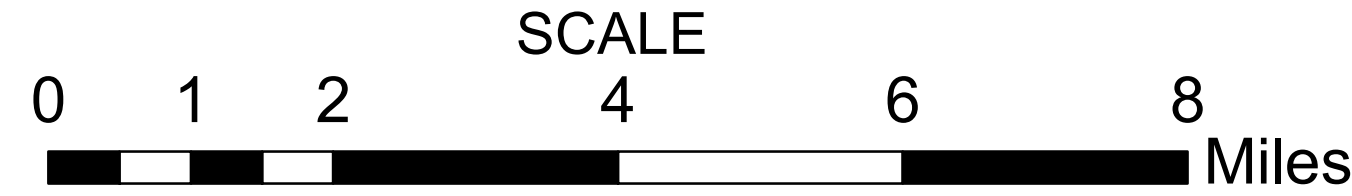


RANDOLPH COUNTY HIGHWAY FUNCTIONAL CLASSIFICATION SYSTEM



APPROVED SIGNATURES	
Federal Highway Administration	DATE
Bureau Chief Maintenance	DATE

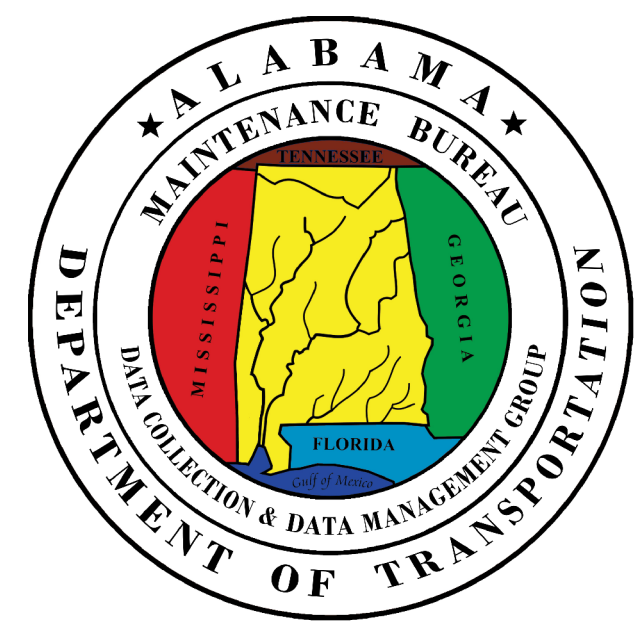
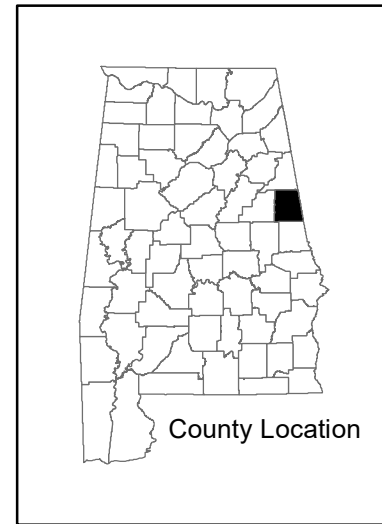


RANDOLPH COUNTY ALABAMA DEPARTMENT OF TRANSPORTATION Highway Functional Classification

REVISIONS	
DATE	COMMENTS
August, 2022	Added New Border and Legend

Disclaimer of Liability:
Due to the scale of this map neither the Alabama Department of Transportation (ALDOT) or the State of Alabama nor any employee and contractor thereof, make any warranty, expressed or implied, or assume any legal liability or responsibility for the accuracy, completeness, or timeliness of any information contained on this map.

FHWA APPROVAL DATE
DATE: February 2023



LEGEND	
Highway Functional Classification	
1 Interstate	—+— Railroad
2 Principal Arterial-Other Freeways and Expressways	—+— INTERSTATE
3 Principal Arterial- Other	—+— U.S.
4 Minor Arterial	—+— STATE
5 Major Collector	—+— COUNTY
6 Minor Collector	—+— City Limit
7 Local Road	—+— County Boundary
Proposed Road	
Open Water	
Streams / Creeks	
Large Urban Area	
Large Urban Study Area	
Small Urban Area	
Federal Lands	