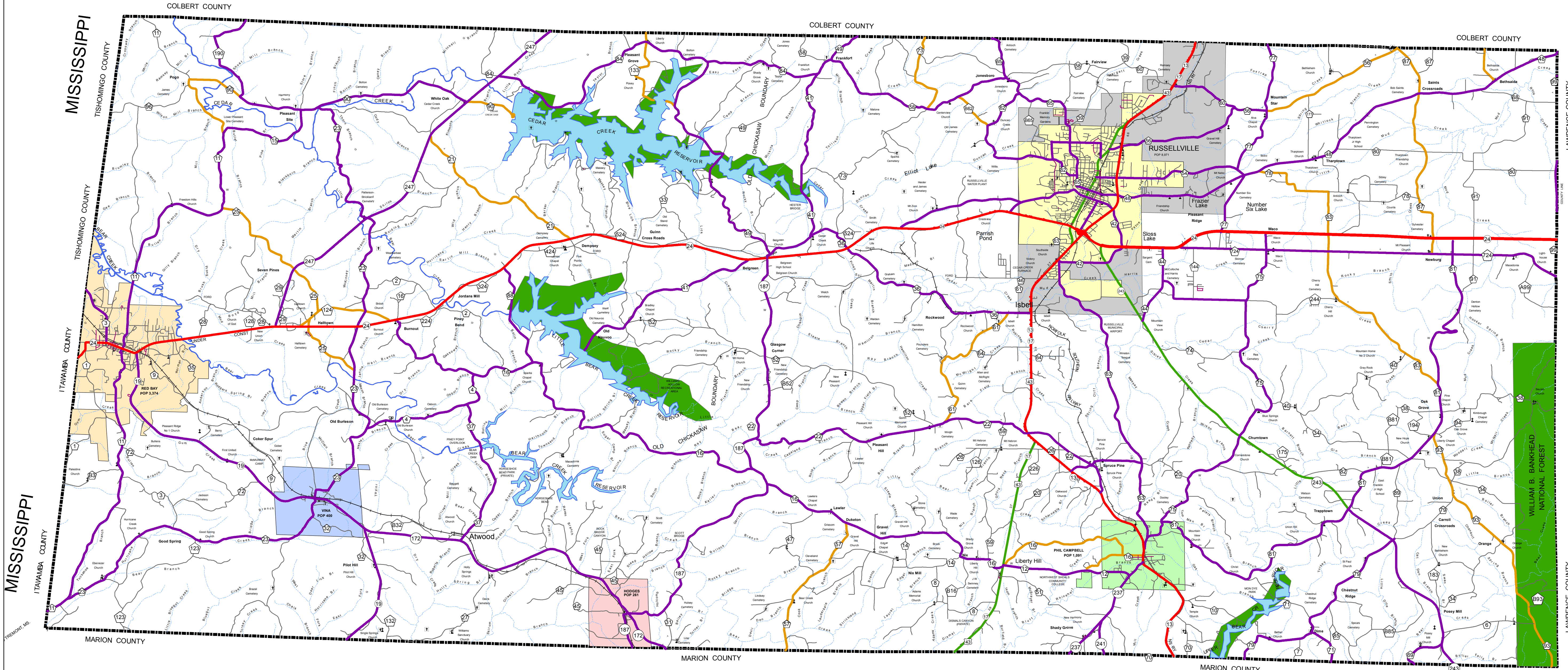
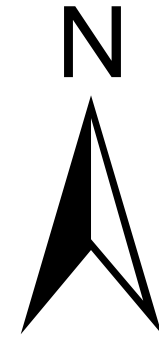
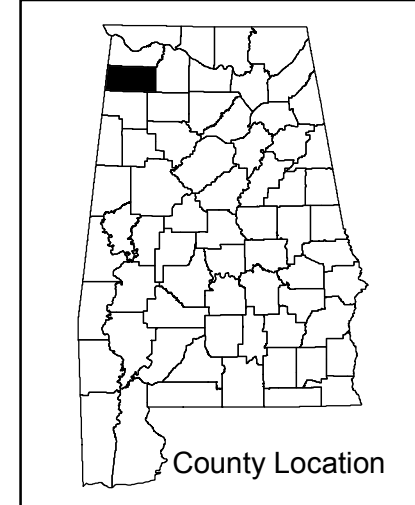


FRANKLIN COUNTY HIGHWAY FUNCTIONAL CLASSIFICATION SYSTEM



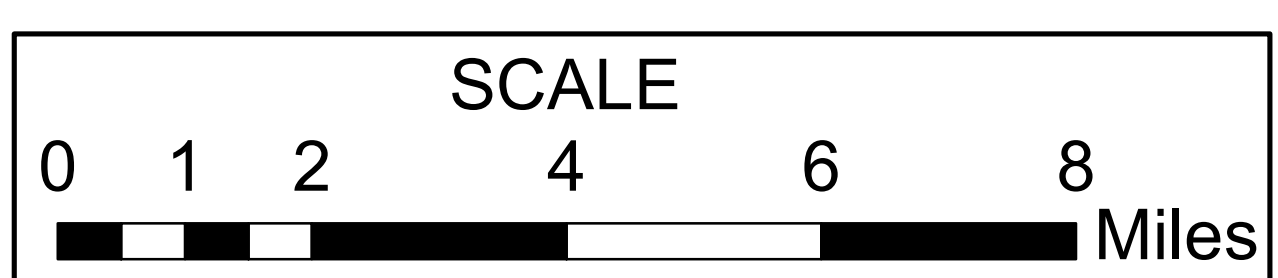
Miscellaneous Symbols

PUBLIC SERVICE FACILITIES	AIRPORTS
... (various symbols for post office, fire station, etc.)	... (various symbols for airport, military airfield, etc.)
CONSERVATION AND RECREATION	EDUCATIONAL AND CORRECTIONAL
... (various symbols for park, beach, etc.)	... (various symbols for school, prison, etc.)
MISCELLANEOUS	CHURCHES, CEMETERIES, ETC.
... (various symbols for railroad, bridge, etc.)	... (various symbols for church, cemetery, etc.)



APPROVED SIGNATURES

Federal Highway Administration	DATE
BUREAU CHIEF TRANSPORTATION PLANNING/MODAL PROGRAMS	DATE



Legend Franklin County Cities

Hodges	Phil Campbell
Red Bay	Vina
Russellville	



Federal Highway Administration
Alabama Division Office

REVISIONS

NAME	DATE	COMMENTS
B. Whetstone	March 26, 2014	Reclassify CR 77 from SR 24 to Colbert Co Line from a Local Rd to a Major Collector
B. Whetstone	July 17, 2014	Reclassify CRs 22, 44, 69 and 244 from a Local Rd to a Major Collector and CR 49 and 724 from a Minor Collector to a Major Collector

Disclaimer of Liability
Due to the scale of this map neither the Alabama Department of Transportation (ALDOT) or the State of Alabama nor any employees and contractors thereof, make any warranty, expressed or implied, or assumes any legal liability, or responsibility, for the accuracy, completeness, or usefulness of any information contained on this map.

FRANKLIN COUNTY ALABAMA DEPARTMENT OF TRANSPORTATION HIGHWAY FUNCTIONAL CLASSIFICATION TRANSPORTATION PLANNING / MODAL PROGRAMS BUREAU

FHWA APPROVAL DATE
August 25, 2014



LEGEND Highway Functional Classification

1 Interstate	Railroad
2 Principal Arterial-Other Freeways and Expressways	INTERSTATE
3 Principal Arterial-Other	US ROUTES
4 Minor Arterial	STATE ROUTES
5 Major Collector	COUNTY ROADS
6 Minor Collector	FOREST ROADS
7 Local Road	NATIONAL FOREST
Proposed Road	
Open Water	
Streams / Creeks	
Swamp / Marsh	
Large Urban Area	
Large Urban Study Area	
Small Urban Area	
Parks	
County Boundary	