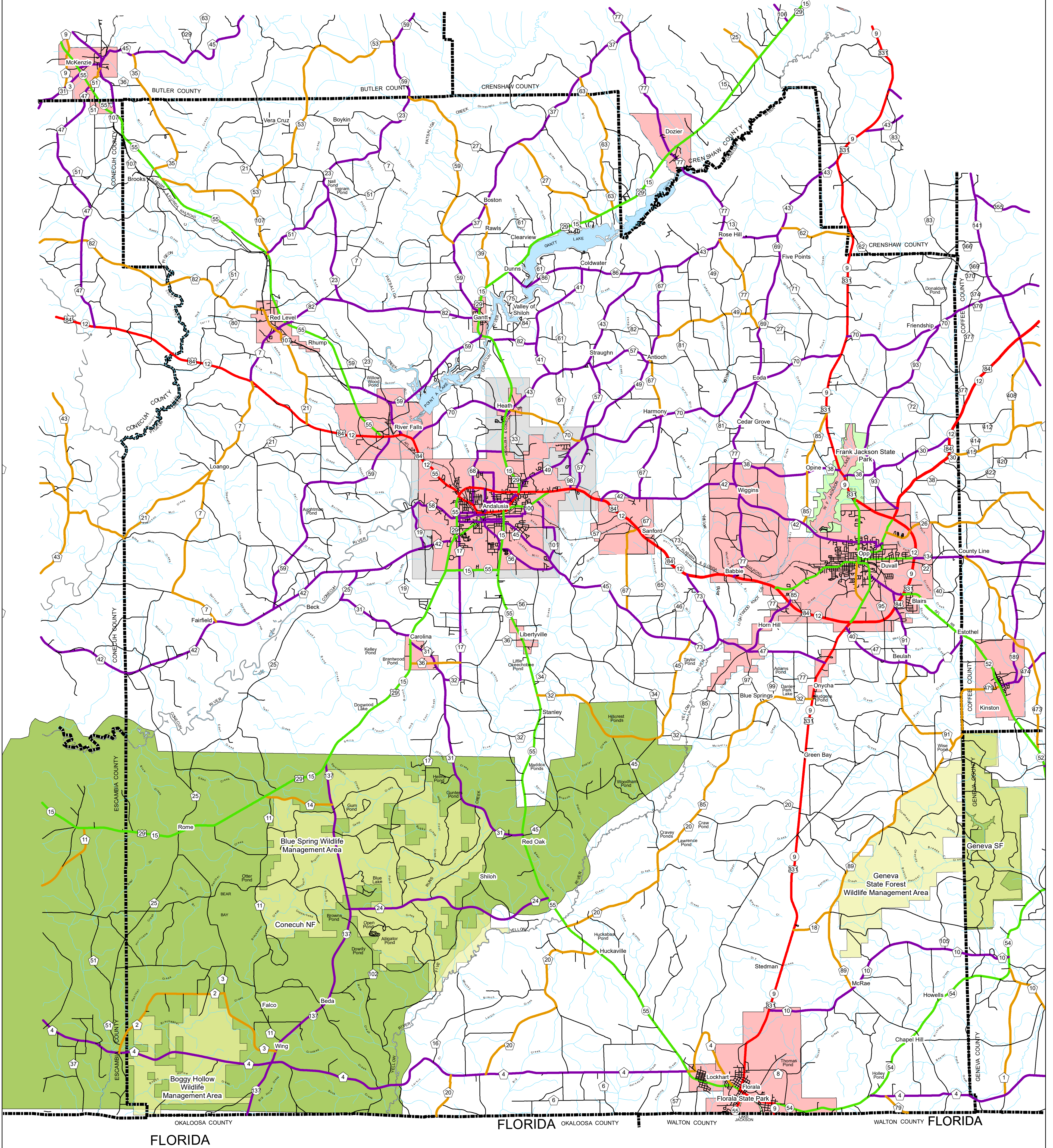
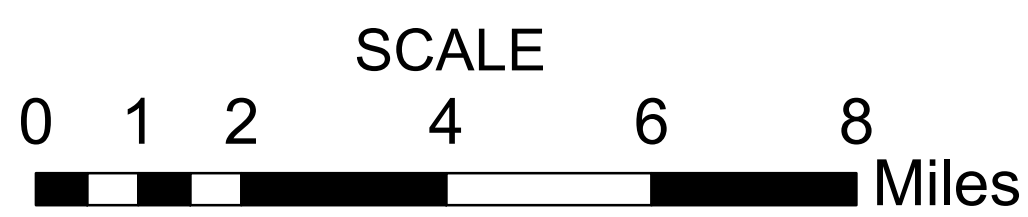


# COVINGTON COUNTY HIGHWAY FUNCTIONAL CLASSIFICATION SYSTEM



APPROVED SIGNATURES	
Federal Highway Administration	DATE
Bureau Chief Maintenance	DATE



## COVINGTON COUNTY ALABAMA DEPARTMENT OF TRANSPORTATION Highway Functional Classification



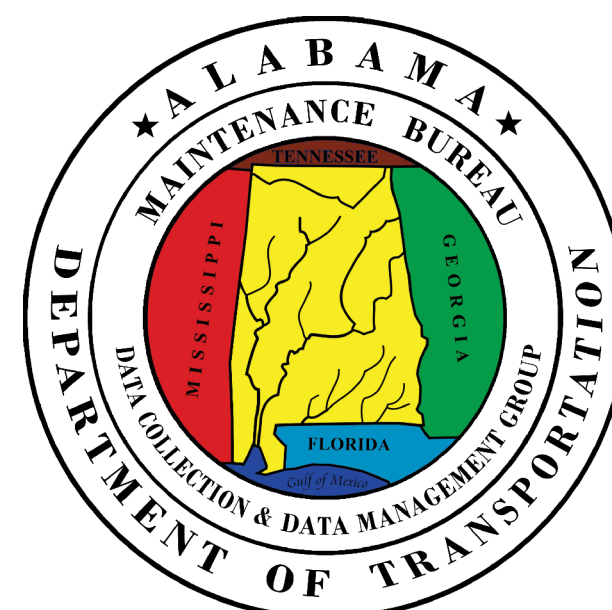
Federal Highway Administration  
Alabama Division Office

### REVISIONS

DATE	COMMENTS
November, 2021	Added New Border and Legend

*Disclaimer of Liability:*  
Due to the scale of this map neither the Alabama Department of Transportation (ALDOT) or the State of Alabama nor any employee and contractor thereof, make any warranty, expressed or implied, or assume any legal liability or responsibility for the accuracy, completeness, or usefulness of any information contained on this map.

FHWA APPROVAL DATE  
DATE: November 5, 2021



### LEGEND

- Highway Functional Classification**
- 1 Interstate
  - 2 Principal Arterial-Other Freeways and Expressways
  - 3 Principal Arterial- Other
  - 4 Minor Arterial
  - 5 Major Collector
  - 6 Minor Collector
  - 7 Local Road
  - Proposed Road
  - Open Water
  - Large Urban Area
  - Large Urban Study Area
  - Small Urban Area
  - State Parks
  - Wildlife Management Areas
  - County Boundary
- Other Symbols:**
- Railroad
  - INTERSTATE
  - U.S.
  - STATE
  - COUNTY
  - City Limit
  - Federal Lands