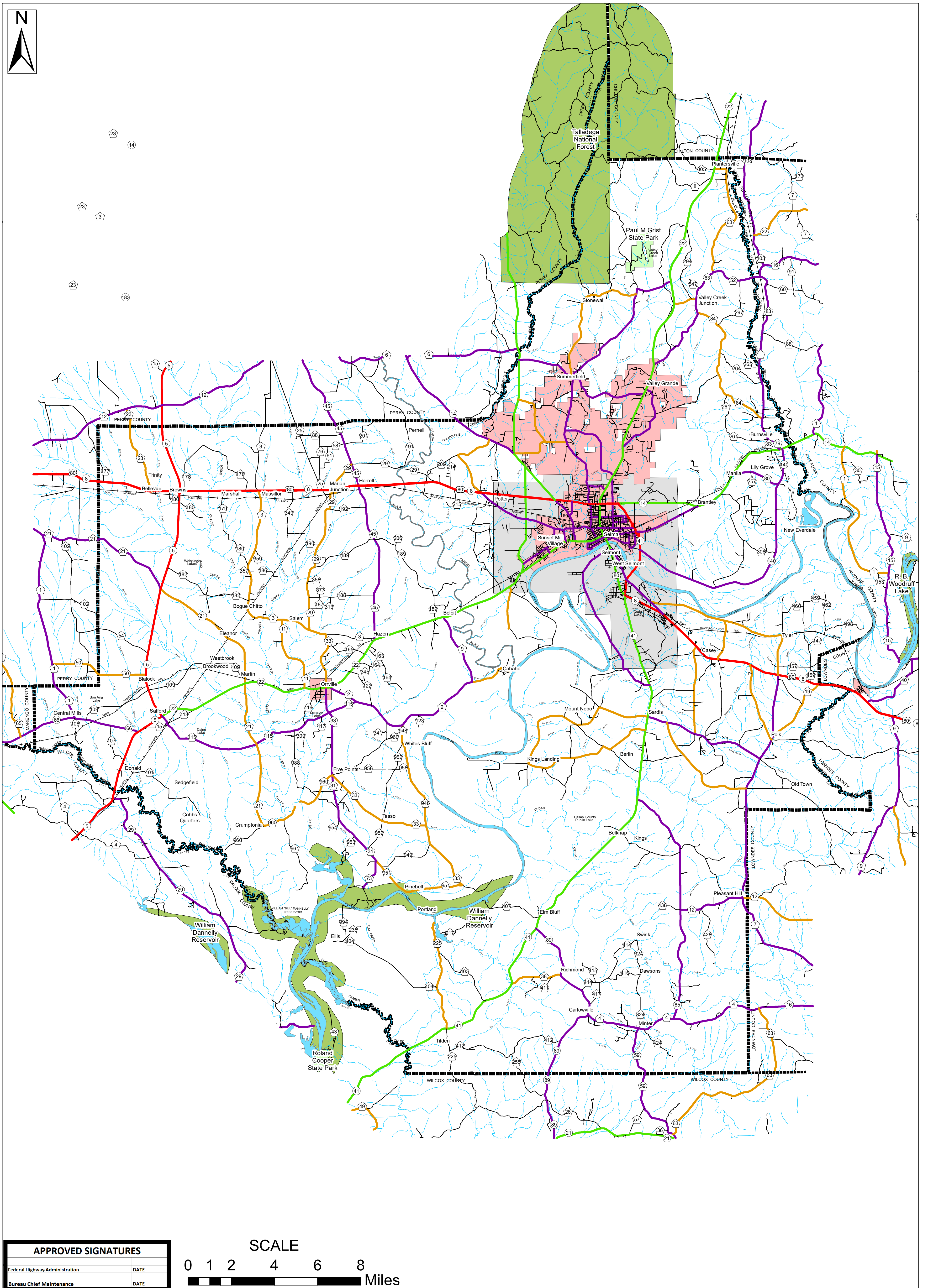
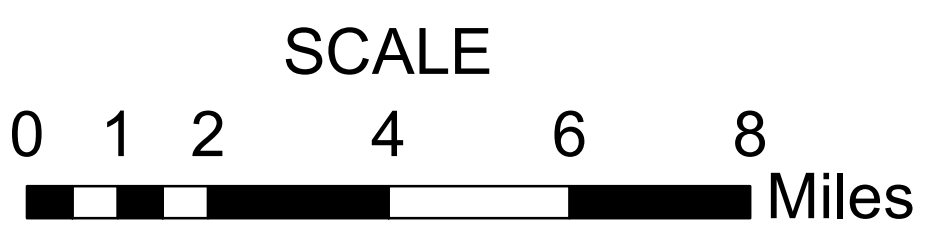


DALLAS COUNTY HIGHWAY FUNCTIONAL CLASSIFICATION SYSTEM



APPROVED SIGNATURES	
Federal Highway Administration	DATE
Bureau Chief Maintenance	DATE

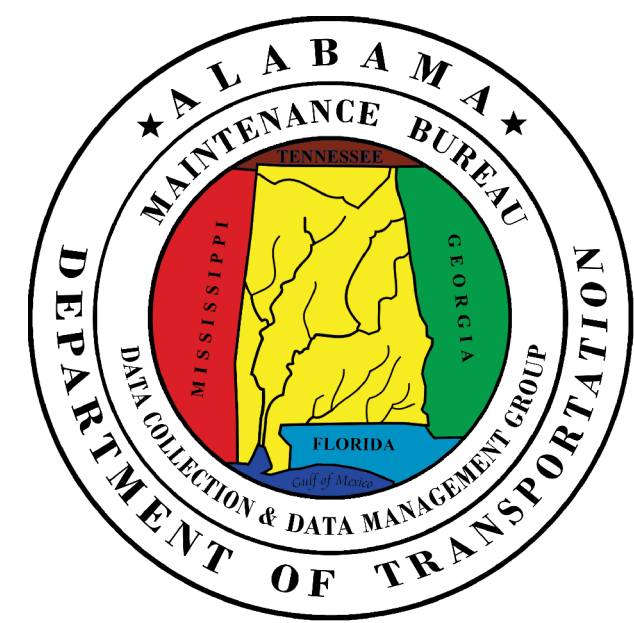
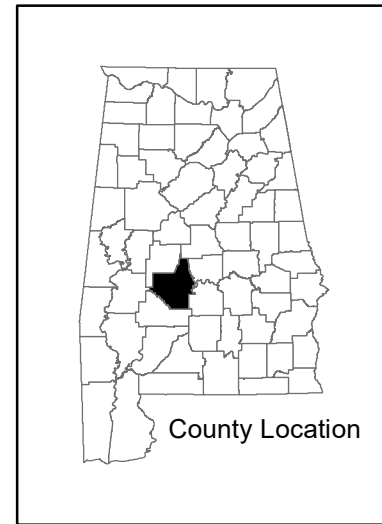


DALLAS COUNTY ALABAMA DEPARTMENT OF TRANSPORTATION Highway Functional Classification

REVISIONS	
DATE	COMMENTS
November, 2021	Added New Border and Legend

Disclaimer of Liability:
Due to the scale of this map neither the Alabama Department of Transportation (ALDOT) or the State of Alabama nor any employees and contractors thereof make any warranty, expressed or implied, or assume any legal liability or responsibility for the accuracy, completeness, or usefulness of any information contained on this map.

FHWA APPROVAL DATE
DATE: November 5, 2021



LEGEND	
Highway Functional Classification	
	1 Interstate
	2 Principal Arterial-Other Freeways and Expressways
	3 Principal Arterial- Other
	4 Minor Arterial
	5 Major Collector
	6 Minor Collector
	7 Local Road
	Proposed Road
	Open Water
	Streams / Creeks
	State Parks
	Large Urban Area
	Large Urban Study Area
	Small Urban Area
	Federal Lands
	County Boundary
	Railroad
	INTERSTATE
	U.S.
	STATE
	COUNTY
	City Limit



Federal Highway Administration
Alabama Division Office